

# Totley Independent

Published continuously since 1977  
August/September 2015

www.totleyindependent.co.uk  
No. 375

20p



*Dramatic image of the recent electrical storms over Totley*

*(Photo: Simon Deeks)*

## Totley Green Belt threatened

Sheffield is known as a green city. Easy access to open spaces, historic woodland and beautiful countryside makes it a great place to live, but those areas are under threat like never before. Local Councillors were shocked to discover that the City Council is assessing 117 sites in the Green Belt for new housing. Yes, 117 and they are spread right across the city, including Dore and Totley.

The Council have informed our local councillors that they will not be publishing site details until October, but it is strongly suspected that some of them are in Totley, due to recent unsuccessful planning applications on the western boundary of the city.

The future of the former Dyson site may also come up again. Two years ago a developer approached the Council for advice on building 45 homes in a highly prominent location close to the National Park. An application for 88 homes at another Dyson site in the Green Belt is currently being considered by the Council. The Campaign to Protect Rural England branded that as a 'thinly-disguised suburban housing estate wholly out of context with its sensitive rural location'.

We all know that there is a real shortage of affordable housing in Sheffield, but surely building on the green belt is not the answer! Arguably we need to try to persuade the Council to do more to encourage developers to build on brown field sites instead. Our local councillors have invited people to send their views on the matter to them, so please feel free to contact our councillors either through their regular surgeries or by means of email – full details of how to contact Martin Smith, Colin Ross and Joe Otten are on page 4 of this issue.

### Deer visit Grove gardens

Talking of the green belt, several gardens on the Grove have been visited this summer by deer, which have caused a fair amount of damage. Plants have been eaten, solar garden lighting damaged, and young fruit eaten from apple and plum trees. Although some people seem, from 'Streetlife' conversations, to prefer wild animals to plants, there is no doubt that deer can be highly destructive in gardens, which is a pity since so many residents put so much work into them. It would be useful if people could share information about further sightings – just contact the 'Independent' (for details see back page).



## Holiday Accommodation with Hot Tub to rent in Filey, North Yorkshire

- 2 Bedrooms
- Sleeps 6 to 8 people
- In the peaceful Hamlet of Primrose Valley
- 10 minutes walk to the quiet beach
- All Dog friendly- including the beach
- 5 minutes drive or 20 minutes walk to Filey town
- Car Parking
- With Hot Tub
- Ideal central location for exploring the beautiful North Yorkshire Coast
- Weeks and Short breaks available

Tel. 07977 864973, e mail- [filey2lakeside@outlook.com](mailto:filey2lakeside@outlook.com)



Search; Holiday Home with hot tub at Filey  
@holhottubfiley

## WESTBOURNE SCHOOL



Educating girls  
and boys for life  
*Inspired teaching...  
Outstanding learning*

- From age 3 to 16
- Average class size 14
- Excellent GCSE results
- Exciting new facilities
- Academic Scholarship Class

PRE SCHOOL  
FOR AGE  
3-4

FREE  
CHILD  
PLACES



**10<sup>th</sup> OCTOBER**  
**OPEN DAY**  
10am - 12noon

[westbourneschool.co.uk](http://westbourneschool.co.uk) Call 0114 266 0374

## SEE THE DIFFERENCE!



- **COMPREHENSIVE EYE EXAMINATIONS**  
including special tests for glaucoma,  
colour vision, dyslexia & diabetes
- **CONTACT LENS CONSULTATIONS**  
free contact lens trials and monthly  
direct debit payment schemes
- **PRESCRIPTION SUNGLASSES**
- **LEISURE SPECTACLES**  
for computer work, fishing,  
swimming and safety wear
- **ACCESSORIES**  
ready readers, chains and magnifiers

**LENSES BY SEIKO**

In all non-budget spectacles

**TOTLEY**  
63 Baslow Road  
236 4485

**ABBEYDALE**  
634 Abbeydale Road  
255 6554

For more help and information please phone or call into the practice of your choice  
For a full list of our practices visit

**WWW.MKO.CO.UK**

Terms and conditions apply.

# MWB

**M. WOOLHOUSE BUILDERS LTD**  
THE COMPLETE BUILDING SERVICE

- Design to Completion
- New Builds
- Extensions
- New Roofs
- Slates / Tiles / Stone
- Stonework Specialist
- Renovations

**T : 0114 235 3314**  
**M: 07973 908 187**



[www.mwoolhousebuilders.com](http://www.mwoolhousebuilders.com)  
[info@mwoolhousebuilders.com](mailto:info@mwoolhousebuilders.com)



# What's on at the Library



## A busy summer at Totley Library

Everyone at Totley Library has been blown away by the support we have had for our community events this summer. So far, we have raised almost £1,500 at our events including An Evening with Alan Biggs, Plant Sale, walking performance of Boots Fresh Air and Ginger Beer and Ukulele Concert. With two more events coming up, Dore Male Voice Choir concert on Saturday 27<sup>th</sup> July and film presentation of Boots, Fresh Air and Ginger Beer on Thursday 29<sup>th</sup> October we hope to raise further funds for the library. This year we are fortunate in that we have received a full grant from Sheffield City Council of £22,000. However, the council funding will start to reduce in future years so by starting to fundraise now we will help to secure the long term future of Totley Library. More information about upcoming events at Totley library can be found on our website [www.totleycric.org.uk/events](http://www.totleycric.org.uk/events).

We are very lucky to have such a committed team of volunteers at Totley Library. We do however need new volunteers who can help with gardening, to help keep the grounds looking good and the grass cut. If you are able to help in any way with gardening please pop into the library and ask for a volunteer registration form or send an email to [totleylibrary@gmail.com](mailto:totleylibrary@gmail.com). And if there are any keen bakers out there who would like to bake a cake for us to sell at one of our upcoming events, please do get in touch. And lastly, we're looking for someone to volunteer their expertise as a Health and Safety Officer, so if this could be you, please get in touch with us.

If you are interested in attending one of our fundraising events, did you know that if you become a Friend of Totley CRIC you get discounted entry? As a Friend you will provide vital financial support to the library, be able to contribute your views to how Totley Library should be run and will receive regular information updates. The minimum annual donation is £5 a year and you can either pick up a membership form in the library or visit the website [www.totleycric.org.uk/become-a-friend](http://www.totleycric.org.uk/become-a-friend)

Our popular Toddler Craft and Storytime session on Wednesday morning is taking a break in August and will return on Wednesday 2<sup>nd</sup> September. School age children are welcome on that day if they are not yet back at school, as well as pre-schoolers. To help keep the children entertained in August, we are running a nature in art competition. You can collect an entry form from the library, costing 50p. Entries will be judged by local artist Pauline Hutchinson and winners will be presented with their prizes on Saturday 5<sup>th</sup> September at 10am in the library. We are also supporting the national "summer reading challenge" to encourage children to read six books during the six week holidays. Registration forms, stickers and rewards can be collected from the library.

Natasha Watkinson

## Regular events and meetings at the Library:

### Monday:

Creative Writers Group, every 2<sup>nd</sup> Monday, 6 pm – 7 pm  
Readers Book Group, every first Monday, 1.30 – 2.45 pm

Councillor Surgery, every two weeks, 7.00 – 9.00 pm

### Tuesday:

Basic ITC Sessions, 10am – 12 noon. To book, phone Heeley Development Trust on 0114 250 0613.

Craft Group, 2.00 – 4.00pm

Poetry Group (this group is currently full), last Tuesday in month, 7.00 – 9.00 pm

### Wednesday:

Coffee Morning, 10.30 – 12 noon

Toddler Story Time, 10.30 – 11.30 Craft activities, singing and stories. Runs during school holidays but not in August.  
Health Walk, 10-30 – 12 noon. One short and one longer ranger-led walk. Tea, coffee and biscuits in library afterwards.

Totley History Group, occasional Wednesdays 7.30 onwards. Talks on matters of historical interest. Check posters in library, the *Independent* Diary, or [www.totleyhistorygroup.org.uk](http://www.totleyhistorygroup.org.uk)

### Thursday:

Friends of Gillfield Wood, occasional Thursdays, 7.30 pm onwards. Talks on local nature and conservation. See posters, the *Independent* Diary, or [www.friendsofgillfieldwood.com](http://www.friendsofgillfieldwood.com)

## Pinfold Memorial

Pictured below is the memorial stone that has been installed in the Pinfold garden. Stan Bingham and Jerry Roberts created the garden in the Pinfold space back in the 1970s. Funding for the stone came through a bequest from Jerry Roberts' widow several years ago, for the sole stated purpose of paying for a memorial to Jerry to be placed in the garden. The committee of the Totley Residents Association (which managed these funds) consulted with the Totley community over a number of years by means of the Association's Annual General Meeting and through the Totley *Independent*, and commissioned the stone which was installed earlier this summer.



## Dementia Friends

Did you know that 1 in 14 people over the age of 65 have dementia? Do you know how to help them live well with their dementia?

The Dementia Friends programme is the biggest ever initiative to change people's perceptions of dementia. It aims to transform the way the nation thinks, talks and acts about the condition.

There are now over one million Dementia Friends across England and Wales, who are going out into their communities with a greater understanding of dementia and some of the ways they can help people living with the condition. From being more patient in shop queues, to volunteering, to campaigning for change, Dementia Friends are helping to create communities in which people living with dementia feel more understood and included.

You too can sign up to be an Alzheimer's Society Dementia Friend and receive training through: an online video, or a face-to-face information session. Visit [www.dementiafriends.org.uk/](http://www.dementiafriends.org.uk/)

## Dore Gilbert & Sullivan Society

We are coming to the end of a very successful twelve months. We thought that our performance of The Merry Widow in 2014 would be hard to beat but from all the feedback we've received (which even continued to last weekend) it seems that The Gondoliers at least matched it! It is a pleasure to belong to such a pleasant bunch of talented and hard-working people.

I'm pleased to say that our newer members have taken the Society to heart and are more than pulling their weight. Some were very nervous about performing in our concerts but they have been excellent and are improving all the time as their self-confidence grows.



We have recently completed two concerts - our usual Summer Concert in Dore, which was played to very appreciative full house, and one in Laughton-en-le-Morthen which was an all-Gilbert & Sullivan affair (by request) where we raised over £500 for their Organ Fund as well as £200 for the Society.

We had one more concert this summer. It was in Carlton-in-Lindrick on 15<sup>th</sup> July and we're now taking a break until rehearsals begin for next year's show which is to be Orpheus in the Underworld by Offenbach.

If anyone is interested in joining us, we rehearse in Millhouses Methodist Church Hall on Wednesday evenings and we will be starting back on September 2<sup>nd</sup> so, if you can sing and like musical theatre why not give it go. We need more sopranos and men!

Have a good summer and maybe we'll see you at our Christmas concert in December - or even before!

For further information visit our website <http://www.doregass.co.uk> or alternatively phone me on 0114 2362299 or our chairman Mark White on 0114 2360723.

Derek Habberjam

## Letter to the Editor

### More dumping near the wood

Dear Editor

Having left Gillfield Wood by the bus terminus today I was faced with this offending pile of an old house kitchen on the other side off the gate. Further down the main road



another pile (looked like same kitchen) dumped below the mobile phone mast in full view of the road. I did a quick check but sadly there weren't any boxes with any address on it. This must stop! Please watch out everybody! Look out for suspicious vehicles!

Adrian Hardwick

## Councillor Surgeries

### Liberal Democrats:

2nd Monday in the month 6.00-7.00 pm, Totley Library, Baslow Road and 2nd Saturday in the month, 10.30 am to 12.00 noon, Dore Old School Hall, Savage Lane, Dore.

Contact details: Colin Ross 235 1948

Email: [colin.ross@sheffield.gov.uk](mailto:colin.ross@sheffield.gov.uk)

Joe Otten 230 3290

Email: [joe.otten@sheffield.gov.uk](mailto:joe.otten@sheffield.gov.uk)

Martin Smith 0781 205 5346

Email [martin.smith@sheffield.gov.uk](mailto:martin.smith@sheffield.gov.uk)

## Electrical and Hardware Supplies

\* Light bulbs, sockets and all DIY \* hardware \* tools \*  
\* wood preservative \* pest & disease control \* fertilisers \*  
If we don't have what you want, just ask and we will get it for you.

**Spring & summer bedding plants,  
Miracle Gro Compost NOW IN STOCK**

\* lawn mowers serviced \* garden machinery repaired \*

Side entrance at The Heatherfield Club, 191-193 Baslow Road, Totley.

\* Totally stair-free \* wheelchair access \* customer car park\*

Opening hours: 9am to 5pm Tuesday to Friday (12.30 - 1.30 lunch)  
9am to 1pm Saturday. Tel 235-1444.



# Walking the Dog....

## Me and the Vicar's Daughter

I'm walking Jack past All Saints Church at just after half past six, and I notice it's locked and empty. Turns out they don't even do evensong any more.

That makes us sadder than we usually are at this time on a Sunday evening, as the weekend dies.

All Saints is Totley's hidden, huddly Saxon church with apse and golden eagle. It was as ancient as Christianity when I joined and as modern as when it was built twenty years earlier for Roy Denzel Pashley Milner who'd been turned to stone by the Germans in 1914.

I was in the choir, paid 1d. a service. We were five grubby boys trebling in boily ruffs and stained black cassocks that would never button up. A wobbly man stood behind us tenor and bass. There was a shrieky woman soprano from Totley Bents behind him, but the congregation weren't allowed to see her of course. And there was a scarlet cassocky server who rang the bell and snuffed the candles, and we all wished to grow up so we could be him. And we did – so beware what you wish in church.

Charlie Linfoot stamped at the organ and puffed in God only knew what key, if any. The small congregation sat in their coats, dreading the collection.

Outside, a watery sunset. Inside, the Nunc Dimittis.

This is the Christianity I didn't believe in for ten years, twice on Sundays, matins and evensong, with choir practice every Thursday to a boiling harmonium, and something very dark every Wednesday in Lent.

I never missed any of it. And now I miss it all the time.

It was a muddle of magic and daft.

Wine turned into blood here, if you weren't looking. Men wore dresses. An hour miraculously lasted three times longer than an hour at the News Theatre. You were never allowed to sing Psalm 119, but you could sing any other psalm to any other tune all at once and nobody noticed, as long as you got to the Amen about the same time.

The Book of Common Prayer that Cranmer would have died for (and did) could exactly forecast the date of Easter two thousand years from now. It also had the list of all the women you weren't allowed to marry, including both your grandmas, thank God. You could study the churching of women during the sermon, and also refer whenever you wanted to Deuteronomy 28,30.

Nobody ever asked if we believed any of it, but we had to be patriotic in November, and lash out in the collections at Easter, because that's when the vicar hit his jackpot.

Girls couldn't join of course. Women far beyond childbearing could do the flowers but they obviously couldn't be choristers, organists, vicars, sidesmen, servers, organists or wardens.

When I hit puberty, or puberty hit me, I needed a bit more sin than we had at All Saints. And a God who would select me, like the eleven plus had, and leave my mother and heathens like her to go to hell.

And then we all grew up.

The Church of England stopped talking in thees and thous, burned Cranmer again, chucked away the true Bible, and didn't even do evensong.

Jack said that was all quite interesting, but why didn't Jesus have a dog? And didn't I used to fancy the vicar's daughter during evensong? And didn't it turn out she fancied me as well? Only when we did meet, once, long after the fall, wasn't it too late?

**Rony Robinson**



*love life*  
**love Slimming World**

NEW for 2015!  
Power up your weight loss

Join a warm and friendly group near you today...

**TOTLEY (SHEFFIELD)**  
Monday's 5.30pm & 7.30pm  
Abbeydale Sports Club  
Abbeydale Road South  
S17 3LJ

**GREENHILL (SHEFFIELD)**  
Wednesdays 10.00am  
St Peters Church,  
Reney Avenue, S8 7FN  
\*Morning Group\*

**Call Jo: 07590 545 253**

the UK's favourite way to lose weight

save £5 join now!  
Just £9.95 on week one then £4.95 each week

**slimmingworld.com**  
0844 897 800

**Slimming WORLD**  
know you're amazing

\*More people choose to attend a Slimming World group each week than any other weight loss group.



Piano/Keyboard~Guitar~Singing~Flute  
Theory & GCSE Coaching

**MUSIC TUITION**  
**SOUTH - WEST SHEFFIELD**  
Experienced & enthusiastic tutors

All styles, all ages - beginners welcome  
Exam work or just for fun!

Please contact:  
**KARIN FINNEY**  
0114 258 3397 ~ 07854 747153

notetokarin@hotmail.com



M.Scriven  
(FRUITERAMA)

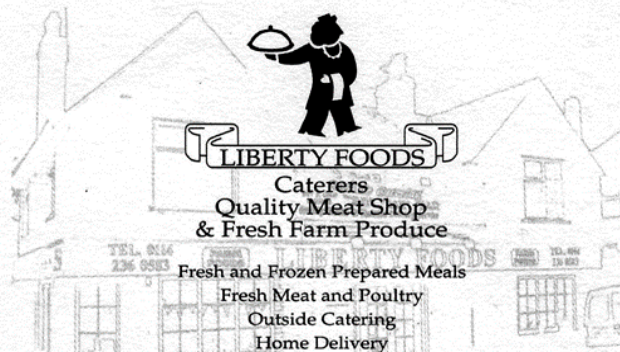
## MARTIN SCRIVEN

HIGH CLASS FRUIT  
& VEGETABLES

37, Baslow Road

Tel. 236 7116

Orders Delivered



253 Baslow Road, Sheffield, S17 4DU  
Tel: 0114 2360 583 Mobile: 07801 346 455

Creating opportunities with disabled people.

Registered Charity No. 218186

### Leonard Cheshire Disability

Leonard Cheshire Services in Offers choice & opportunity to people with disabilities.

A Specialist Unit for the Younger Disabled.

Residential & Respite Care - Single Rooms

Day resources - Aromatherapy -

Reflexology - Physiotherapy - Toning Tables.

Activities include: - Arts & Crafts - Computers - Cookery - Shopping Expeditions - Theatre Outings - Church.

Further details can be obtained from - The Service Manager, Mickley Hall, Mickley Lane, Totley, Sheffield S17 4HE.

Tel. 0114 236 9952

Fax. 0114 262 0234

The Care at Home Service supports disabled people who wish to remain in their own homes.

We provide flexible care packages from 1 hour to 24 hours meeting individual needs.

The service operates throughout Sheffield.

Our service includes: - help with getting up and going to bed, dressing, washing, bathing, shopping, cooking, light household duties.

Further details from: -

The Care at Home Manager

Tel. 0114235 1400

Fax 0114 235 1499

## R.M.M BUILDING SERVICES

### 25 YEARS EXPERIENCE

All types of building work carried out including- Drop kerbs, block paving (drives, paths, etc), extensions, general building repairs and maintenance.

Phone Rob on- Mob- 07906108567

Home-2352190

## BRADWAY INSTALLATIONS

Kitchens, Bathrooms.....and everything in between

- Complete Kitchens - Installation or supply and Installation
- Kitchen Refits - Replacement worktops/sink/hob etc. Worktop / cabinet repairs
- Bathrooms - Cloakrooms - Domestic plumbing - Tiling Laminate / Vinyl flooring

All work undertaken is fully insured and guaranteed

Ring Peter - 0114 236 5995

Mobile - 07766 411355



## Got a computer?

### Having Problems?

Is it running slow? Stops responding?  
Having problems running the latest games or applications? Broadband installation?

### Give me a call!

I'm available for home visits at any time including evenings and weekends. I can also suggest upgrades to improve performance, or even build you a system to your specific requirements.

Tim Brown

Building,  
Installation,  
Upgrading and  
Troubleshooting  
Computer  
Systems  
Over 25 years  
professional  
experience

Phone: 0114 2472619 Fax: 0870 7060080

Mobile: 078 17464703 Email: service@timbrown.plus.com

One man went to mow...  
...but his mower wouldn't go!

Now is the time to call

## Mower Mender

and be ready for the forthcoming growing season

A friendly local business  
servicing all makes of  
garden machinery

phone: 0114 236 6958

mobile: 0781 2211149

Blade Sharpening and  
Collections and Delivery Service Available



## DRONFIELD LANDSCAPES

Logs and wood chippings  
For Sale

### Ring for details

Chris 0114 274 6158

Mobile 07976 072785

Richard Mobile 07789 497104



## Totley 'Independent' Website

FOUR years ago, whilst still editor of the Totley Independent, I decided it was about time to get a website going. After a few quotes I quickly discovered we couldn't afford professional services so in the 'Indy time-honoured way' it was roll your sleeves up time and get on with it! Richard Joel had done something similar at Dore to Door and showed me a few tricks and then after an hour or so a website was born.

Since 2011 we have had well over 10,000 visitors and the analytics tools can now tell us some surprising levels of detail about our website visitors' a summary is below.

Unsurprisingly the overwhelming number of visitors are from the UK (75%), followed by the US (18%), which to me seems quite high. So 93% of all our visitors come from either the UK or the US, then the most surprising was that in the last 4 years the 3<sup>rd</sup> highest visitor count is Brazil (2%) and 4<sup>th</sup> China (1%). Who are our Brazilian and Chinese visitors?

Canada only makes it in 5<sup>th</sup> (0.4%) followed by various European and Australasian countries.

A huge breadth of countries are represented, 73 so far in total including Nepal, Lithuania, Cape Verde, Panama, Ecuador and the newest country to visit us on the 6 June 2015 was Lebanon. We Totley folk seem to be a well-travelled lot!

If you've not been on the website before it can be found at [www.totleyindependent.co.uk](http://www.totleyindependent.co.uk). On there are items such as downloadable copies of the Independent going back to Issue 1 in 1977, upcoming publication dates, links to local organisations and other valuable resources.

Ian Clarke

## 215th (1st Totley) Scout Group

Due to a recent change in leadership we are URGENTLY looking to recruit some new leaders to our thriving Scout Group. In particular we need:

**Cub Scout Leader**  
**Scout Leader**  
**Group Scout Leader**

All of these roles are very rewarding and we have a great group of enthusiastic boys and girls who love coming along every week to enjoy all the activities that Scouting has to offer.

Do you think you could help us?

All of the above roles could be done as a 'job share'. Maybe your expertise lies in the paperwork side of things, maybe you are more hands on and enjoy the practical activities that Scouting has to offer. We can offer lots of help and support if Scouting is new to you. All you need is enthusiasm and a willingness to learn and have fun.

If you feel you could help us out with any of the above, or indeed know of someone who might be interested please get in touch.

If you would like to find out more about what the different roles entail we would be very happy to talk to you.

Contact Sue Bridgens 07982 719284 or email [hallamadccubs@gmail.com](mailto:hallamadccubs@gmail.com)

## All Saints Church

### Totley Hall Lane

#### August

Informal Family Services will be held every Sunday morning at 10 am.

A Traditional Service of Holy Communion is held every Wednesday at 10 am.

#### September

Sunday 6<sup>th</sup> 10 am All Ages All Together

Sunday 13<sup>th</sup> 20<sup>th</sup> and 27<sup>th</sup> 10am: Informal Family Worship.

Every Wednesday 10.00am. Holy Communion.

#### October 4<sup>th</sup>

10.00am Harvest Thanksgiving for all the family.

#### Some notes about August

The month is named after Augustus 1st Emperor of Rome, who chose it because it was the month of his greatest triumphs. He died in August AD14.

Anglo-Saxons called August "Weod-monath", because it is the month in which weeds grow most rapidly.

On Jersey men are banned from knitting during the fishing season August – September.

The birth-stone for August is Agate or Onyx and the flowers are poppy or gladioli.

August is the only month of the year which features in the top 1,000 men's names: Augustus.

1st August is Friendship Day in the U.S.A. but is more widely celebrated in India, some Asian countries and South America.

*Good friends are a great joy in life, so let your friends know how much they mean to you.*



#### Distractions

My mind is like a butterfly  
That flits from flower to flower  
My mind is like a grasshopper  
That lives where grasses tower  
My mind is like a mountain stream  
That gurgles over stone  
My mind is full of everything  
As I worship at your throne.  
My mind is full of endless thoughts  
That dance a merry dance  
My efforts at some quietness Lord  
They never stand a chance  
So Lord I pray just empty me  
Of these distractions great  
Just let me be at peace with You  
So we two can relate.



# TOTLEY SHOW 2015

**Saturday September 5 - Totley Primary School**

## **Programme:**

8.45 am to 10.45 am - Entrants' registration  
11.00 am to 12.30 pm - Judging and awarding of Certificates.  
1.30 pm - Doors open to the public (entrance 50p, children 20p.).  
1.45 pm - Official Opening by Rony Robinson and collection of prize money  
3.00 pm - Raffle Draw  
3.15 pm - Prize-giving, followed by Auction of donated items.  
4.00 pm - Conclusion

**We would like to stress that the timing for entries is most important so that we do not have disappointed entrants unable to show their work due to lateness.** An Entry Form is printed in this issue, page 33. Forms will be available at Totley Library, Totley Post Office, the Ironing Parlour, or at the door on the day.

**Please note that an entry form must be filled before registration. There will be a table at reception for this purpose.**

Within the Photographic section we have continued with last year's format with the sections being:-

## **Black and white.**

**Creative** (use your imagination skills to present a photograph).

## **Wildlife**

**Landscape** (we hope to see some wonderful views).

For our 30<sup>th</sup> year we have again been fortunate to get the Escafield Brass Band to entertain us in the afternoon playing for two sessions the times of which will be announced during the day. We are also looking into further entertainment to celebrate the event.

If you have not helped before and would like to be involved please contact us. See below for contact details.

We are again asking for Sponsors for the Class Prizes, £6-00 covering First, Second and Third place prize money and donations for the Tombola stall which will be greatly appreciated.

Anyone requiring a stall should please contact us.

Donations can be left at the 'Ironing Parlour' on Baslow Road, or at 6, Milldale Road, Totley.

If you can help with making cakes or scones please contact Dorothy at the address below or at this email address: [lesanddotfirth@talktalk.net](mailto:lesanddotfirth@talktalk.net)

Les and Dorothy Firth  
6 Milldale Road  
Te. 0114 236 4190

**All proceeds after costs will be donated to Transport 17**

**We look forward to seeing you all again,**

**Les & Dorothy Firth**



*Prize-winning wood sculpture at the 2014 Show*

## A Night under the Stars!

Spend a night under the stars in the Peak District and show your support for nature! Take on the challenge of surviving a night in the woods!

Thousands of people in the Peak District are being encouraged to spend a night in nature's home next month by taking part in the RSPB's Big Wild Sleepout. The Big Wild Sleepout is part of the RSPB's 'Giving Nature a Home' campaign, which is aimed at inspiring everyone to do their bit for nature, wherever they live and however big their



outside space

Running from 7-9 August, the event – now in its third year – encourages families to sleep out overnight and find out which creatures they share their homes with, while raising money to help protect them. Sarah Houghton, Big Wild Sleepout organiser, said: "Whether you're camping in a back garden or attending your local RSPB reserve event, we hope that thousands of people will be getting closer to nature and be inspired to help save it. Some of our best loved garden favourites are among the creatures shown to be in serious trouble and by taking part in this fun outdoor activity, we're making the nation aware that nature needs our help."

This year's Big Wild Sleepout is being supported by Rohan, designer and supplier of outdoor clothing and footwear. Roger Cann, Managing Director for Rohan, said: "We pride ourselves on gear to keep you protected in the world's wildest places and for many people a love of adventure starts close to home. The RSPB's Big Wild Sleepout is inspiring, accessible and encourages people to get outdoors, discover local wildlife and help preserve it for future generations, which is something we at Rohan fully support. Whether it's wrapping up warm with base layers or waterproofs to keep the rain out, the RSPB's budding naturalists can kit themselves out for a night in the wild at Rohan!"

From pitching a tent or building a shelter in the back garden, to just simply heading outside and sleeping under the stars, there are plenty of ways to join in.

Organised sleepout events will also be held at various RSPB reserves and partner sites across the country, offering all ages the chance to experience the world of nature's home after dark – including Eastern Moors in the Peak District.

**On Saturday 8 August, join the Eastern Moors team to survive a night in the woods.** Running from 11 am on Saturday 8 August until 10 am on Sunday 9 August, this event is a weekend of challenges, from whittling a bow and

arrow, building woodland furniture, lighting a fire, cooking a campfire dinner and creating a shelter to sleep in.

Tickets for the event, which is suitable for children aged nine and over, are £25 for adults, £20 for under 16s and family discounts are available. Participants are asked to wear suitable outdoor clothing/footwear and to bring a sleeping bag, roll mat, ground sheet, torch, insect repellent, suncream and hat, warm clothes, waterproof clothing, a bowl, a plate and cutlery. Please note that no tents are required as participants will be sleeping in shelters, although small tents will be available to borrow if needed.

Booking is essential. To book, please call 07738 738844 or email [enquiries@easternmoors.org.uk](mailto:enquiries@easternmoors.org.uk). And for more information and ideas on how to make the most of your Big Wild Sleepout, visit [www.rspb.org.uk/sleepout](http://www.rspb.org.uk/sleepout)

## Junior rangers earn big rewards!



Hamish Dicken

Hamish Dicken, aged 7 and Tilly Clarke, aged 10 have become the first Junior Rangers to gain special T-shirts, after lots of hard and dedicated work at 'Muck In Days', a series of events run by the Eastern Moors Partnership and National Trust.

Having already earned badges to honour their work, Hamish and Tilly continued to carry out conservation tasks such as ragwort pulling and bird box making on Eastern Moors and the Longshaw Estate. Their valuable contribution didn't go unnoticed, and now they can wear their T-Shirts with pride, matching the rangers and wardens as they help with all the efforts needed to protect these special sites.

Anyone under the age of 18 can become a Junior Ranger. Just turn up to a Muck In Day and start collecting stamps. All Muck In Days are free and family friendly, taking place once a month on a weekend.

Below are the dates of the Muck In Days which will be taking place at Longshaw Estate and Eastern Moors throughout the summer.

Saturday 18 July - Himalayan Balsam pulling at Longshaw  
Sunday 16 August - Bracken bashing on the Eastern Moors  
Sunday 27 September - Big seed collection at Longshaw



Tilly Clarke

For more information on how to get involved, please contact Longshaw National Trust on 01433 637904 or email [jenny.gerrans@nationaltrust.org.uk](mailto:jenny.gerrans@nationaltrust.org.uk).



## RS HEATING & BUILDING CO.

Est 1971

**Heating Division** - Experienced Installers of condensing, combination and regular boilers. Authorised installers of Valiant, Worcester Bosch and Glowworm systems, fully guaranteed. Complete aftersales service. Also bathrooms, showers and small plumbing works.



**Building Division** - Loft conversions, house renovations, including general building, joinery, plastering, electrical, decorating etc.



### RS HEATING & BUILDING CO.

88 Sunnyvale Road, Sheffield S17 4FB  
Tel: 0114 236 4421

62 Machon Bank, Sheffield S7 1GP  
Tel: 0114 255 9425 / Fax: 0114 255 9431

[www.rshtgblld.co.uk](http://www.rshtgblld.co.uk) E-mail: [enquiries@rshtgld.co.uk](mailto:enquiries@rshtgld.co.uk)



## Crocus Homecare

Homecare with Compassion



### Care and Support in your own Home

Crocus Homecare provides high quality care and support services to help you, or the person you care for, when it is most needed.

Crocus prides itself, and has built its reputation, on providing the highest quality care with compassion, understanding and respect for each individual and their families.

For more information, please call Debbie Crowhurst, or have a look at our website

**Personal Care - Practical Help - Respite Care - Dementia Care**  
**24 Hours a Day / 7 Days a Week**

Tel: 01629 812874

[www.crocuscare.com](http://www.crocuscare.com)



## Thrive

Helping small businesses from start up through growth to maturity.  
Tax returns, investigations and more specialist tax planning advice.  
1 hour free initial consultation

Contact us on:

t: 0114 281 2331 f: 0114 281 2171

e: [info@r-rose.co.uk](mailto:info@r-rose.co.uk)

[www.r-rose.co.uk](http://www.r-rose.co.uk)



**R-Rose & Co**  
Chartered Accountants and Tax Specialists

**Home Instead**  
SENIOR CARE  
*to us, it's personal.*



### Are poor standards of care making you worried about your loved one?

Worried that your loved one isn't receiving the best care possible?

Home Instead Senior Care could be the answer to your worries! We focus on providing care of the highest quality to all of our lovely clients

- Companionship, Home Help and Personal Care Services
- 2 to 24 hours calls
- We match our client and carers based on personality

We employ, train and mentor our staff to ensure your loved one feels like they have someone they can rely on to help them remain independent in their own home.

Call Now for a FREE Care Consultation 0114 250 7709

[www.homeinstead.co.uk/sheffieldsouth](http://www.homeinstead.co.uk/sheffieldsouth)

6 Shirley House, 31 Psalter Lane, Sheffield, S11 8YL



## Tiling, Plumbing, Plastering & Complete Bathroom Installations

**Tel : 07738 688 807**

- \* All Plumbing Leaks, Bursts & Blockages
- \* Taps, Showers, Radiators Etc
- \* No Job To Small
- \* Home Improvements & Maintenance
- \* Underfloor Heating, NVQ Qualified
- \* Reliable, Fully Insured & Guaranteed

[www.A1tilingandplastering.co.uk](http://www.A1tilingandplastering.co.uk)

**25 Five Trees Ave, Dore, S17 3LW**



# Totley Primary School

## Totley Primary Through the Decades

Back in the early 1950s, school life was very different. "Chalk and talk" was the favoured teaching method of the day and the curriculum hadn't changed a great deal since before the war! Rather than being promoted in the classroom as it is today, discussion between children would have resulted in a rap on the knuckles, while ideas such as interactive whiteboards and wireless Internet access were the stuff of Sci-Fi movies!

This week we have been celebrating 60 years of life at Totley Primary School, since the school's official opening in 1955. Each of our classes was assigned a decade to learn about from the school's history and we have had great fun finding out about how fashion, music and culture in Britain have changed over the years, as well as how life as a schoolchild has moved on.

We kick-started our decades week with a dressing up day (any excuse here at TPS!) and ended it with a whole school assembly where each class shared their findings.

Happy birthday Totley Primary School and here's to another 60 years!!



*Our Y4s in 1970s garb – the decade that taste forgot!*



*Y5 head back to the swinging 60s!*

*Ben Paxman, Assistant Head Teacher*

## Holmesfield Church Walking Group

### Holmesfield Dronfield Woodhouse Walk

On Wednesday 19th August at 10am Robin Greetham will lead a walk starting at the Rutland public house on the main road in Holmesfield.

We will go down Cowley Lane then up to Cartledge, through the fields to the church, down the wood and on to the chapel at Dronfield Woodhouse. Five

minutes later, coffee will be served at Jane and Robin's house, then we go back to the pub for lunch (optional).

The cost of the walk is £3 and the proceeds will go to Holmesfield Church Restoration Fund. If you would like to come, just turn up on the day.

The walk is approximately 4 miles long. If you have any queries, phone Robin on 01246 412767,

## Letters to the Editor

### Gillfield Wood and the Library

Dear Editor,

A big 'thank you' to all those who have worked so hard to improve the entrance to Gillfield Wood from the bus terminus – wonderful!

Also to all the volunteers helping to run the library – much appreciated!

Sincerely,

*Mary Hanson*

\*\*\*\*\*

### Bus Bewilderment

Dear Editor,

In reply to an article in the Totley Independent: Main Line bus service could have given passengers for Totley and Totley Brook more warning of changes in the service.

Taking a bus out of service meant a wait of half an hour, in the morning, without warning, and I had to hurry down to Totley in order to be on time at work.

If there is no 97 service in the evening, everyone living further than Totley Brook is faced with fifteen to twenty minutes' walk, in winter in the dark, after crossing Baslow Road or Abbeydale Road South where there is no pedestrian crossing!

*Alison Harries*

\*\*\*\*\*

### 40 mph question

Dear Editor,

Regarding the current persecution of Totley motorists: can anyone explain why, if the single-lane stretch between the Beauchief Hotel and the Beauchief Gardens can be 40 mph, why the Baslow Road dual carriageway in Totley has to be limited to 30 mph?

*E. Wright*



## Cavendish Cancer Care

For many people, a cancer diagnosis comes top of a list of 'greatest fears'. And for those people who are diagnosed, it can be an extremely confusing time, filled with anxiety and uncertainty. Those anxieties don't just go away, either. Did you know that many people find that they feel even worse after they finish treatment for cancer and are no longer in hospital care?

In Sheffield, we are lucky to have the Cavendish Cancer Care centre to help these people. It's a service that is completely free to use, with very short waiting lists, and full of people who know just how to help people facing cancer and their families.

But not enough people know about the centre and what it does. Patients can either self-refer to Cavendish, or are referred by their doctor. When they arrive at the centre, they meet with an assessor. Together, they come up with a programme of complementary therapies to help the patient cope with cancer. It could be counselling, or massage, or reiki, or nutritional advice. All these therapies are given by experts with a proven track record in helping people deal with cancer.

People like Peter, who is a scientist and was very sceptical about complementary therapies. After receiving hypnotherapy, he said: "The transformation in me has been amazing. I came into this feeling very sceptical about the whole thing but I feel so much better now than I did a couple of months ago. I'm sleeping better, I'm less anxious, I've got more energy, more enthusiasm, and more confidence. People at work have really noticed the change in me. I can't say I feel exactly how I felt before I was diagnosed but I really am so much better."

It's not just patients themselves who benefit from Cavendish's services. They also help their families, who are entitled to therapies, and we have a dedicated bereavement service. Holly, a midwife, didn't know where to turn to when her nan died. She accessed the centre after a recommendation from a friend. After her relaxation treatment, she said: "I've learned so many relaxation techniques that will see me through my life, not just for grief but for every situation I'm going to face. They took the guilt away from how I was feeling."



Cavendish rely on the kind donations they receive to keep going, with the NHS providing less than 5% of their funding. Their donors ensure that more people across Sheffield continue to receive the help they need to help them cope.

Their next big event is a Ladies Lunch on 18<sup>th</sup> September at Baldwin's Omega. It promises to be fun, glamorous and delicious! Please visit [www.cavcare.org.uk](http://www.cavcare.org.uk) or ring 0114 275 4070 for more information. Every penny they receive helps another person face one of the most frightening situations of their life.

*If you, or someone you know, feel like you would benefit from speaking to someone at the Cavendish Centre, please call 0114 278 4600.*



## Friends of Gillfield Wood Diary

### AUGUST

**Sunday 1<sup>st</sup> Aug: Bird and Butterfly** walk with Chris Measures (Friends of Gillfield Wood). Meet by the Scout Hut, off Aldam Road at 8:30am. Bring binoculars and cameras. If it rains overnight it is best to have strong shoes or boots.

**Sunday 23<sup>rd</sup> Aug: Friends of Gillfield Wood** practical conservation morning run with the help of the Sheffield Council Ranger Service. Meet 10am at Baslow Road bus terminus. Refreshments, tools, etc. provided. Please wear strong footwear and appropriate clothing. All levels of help required and guidance given. Do also check our website at [www.friendsofgillfieldwood.com](http://www.friendsofgillfieldwood.com) - any late changes of venue will be published there.

### SEPTEMBER

**Wednesday 9<sup>th</sup> Sept: Bat Walk** run by Derek Whitely, from the Sorby Small Mammals Group. This is a Friends of Gillfield Wood event to survey the wood for bats. Please meet at the end of Totley Hall Lane by 8pm. You are advised to have good footwear.

**Sunday 20<sup>th</sup> Sept: Friends of Gillfield Wood** practical conservation morning run with the help of the Sheffield Council Ranger Service. Meet 10am at Baslow Road bus terminus. Refreshments, tools, etc. provided. Please wear strong footwear and appropriate clothing. All levels of help required and guidance given. Do also check our website at [www.friendsofgillfieldwood.com](http://www.friendsofgillfieldwood.com) - any late changes of venue will be published there.

**Saturday 26<sup>th</sup> Sept: Fungi Survey** with Steve Clements from Sorby Fungi Group. This is a second event by the Friends of Gillfield Wood to survey the wood as much as possible. There will be opportunity to learn about fungi from experts in the field. We will meet at Totley Hall Lane by 10:30am. Wear good footwear.

### ADVANCE NOTICE - OCTOBER

**Sunday 4<sup>th</sup> Oct: Mammal Trapping Survey.** Traps previously set by Val Clinging will be examined and any occupants identified, recorded and released. Meet at the end of Totley Hall Lane by 8:30am. This event is organised by the Friends of Gillfield Wood.



**A&R Tradeprint Ltd**  
Excellence in Print for over 30 Years

Newsletters, Booklets & Programme cards for voluntary groups

Bespoke Greeting cards using artists drawings

Wedding Invitations, order of service

Invoice, receipt & delivery notes

Point of sale, business cards, letterheads

Brochures (with professional square back finish)

Shop signs, banners, pull ups & posters



large enough to cope small enough to care

Shop Local 515 Abbeydale Road

Call 0114 2583434

email: [clive@artradeprint.co.uk](mailto:clive@artradeprint.co.uk)

[www.artradeprint.co.uk](http://www.artradeprint.co.uk)

## The Clarion Ramblers

### Sam Harpham

Here is a photograph which belonged to my father-in-law Sam Harpham. Sam was in the Clarion Ramblers and a member of the Edward Carpenter Society.

He fought in WW1 as a gunner and looked after the horses but he was gassed and invalided home. He was wounded mentally, as many were, by what he saw and after the war he became a pacifist. He married at 45 and he and his



wife Marie had their second child, Martin, when Sam was 50. Sadly, he died as a result of being gassed when my husband Martin Harpham was 12.

He was an active member of the Clarion Ramblers, helping to build the Clarion Hut. Martin remembers walks, and we both remember photos taken on the walks, which sadly we no longer have. But what we do have this photo of the National Clarion Van taken in 1914, which will of interest to many readers, as the hut is to be dismantled.

Angela Harpham

## Health and Safety at the Library

### Vacancy for Volunteer Health and Safety Officer at Totley Library

Do you have experience in health and safety and would you like to use your expertise to support the volunteers who now run Totley Library?

We need a Library Volunteer to undertake the role of Health and Safety Officer. If you are interested in taking a lead role in this important area, please contact the Chair of the Trustees, Isabel Hemmings, at [isabelhemmings@yahoo.co.uk](mailto:isabelhemmings@yahoo.co.uk) for further information, or call the Library on 236 3971.

## BEAUCHIEF ABBEY. SHEFFIELD YORKSHIRE

### Our Regular Monthly Services

#### Holy Communion:

1st 2nd & 4th Sunday 11.00am

#### Evensong:

3rd Sunday 3pm

#### Matins:

5th Sunday 11.00am

### Heritage Open Days:

#### September 2015

The Abbey will be open

Thurs 10th 11.00am - 4pm

Fri 11th 11.00am - 4pm

Sat 12th 11.00am - 4pm

Sun 13th 1.00pm - 4pm

[www.heritageopendays.org.uk](http://www.heritageopendays.org.uk)

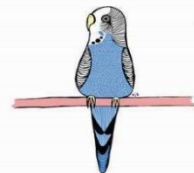
#### All Welcome

Our Services are based on the Book of Common Prayer & Refreshments are served afterwards

email [info@beauchiefabbey.org.uk](mailto:info@beauchiefabbey.org.uk) [www.beauchiefabbey.org.uk](http://www.beauchiefabbey.org.uk)

Beauchief Abbey Lane, off Abbey Lane S8 7BD

## Learn to make Jewellery



For more info  
[jewelleryworkshops@gmail.com](mailto:jewelleryworkshops@gmail.com)  
07801 371644

### 8 Week Courses Starting September 2015

Daytime & Evenings 8 Week Course

### One Day Introduction to Jewellery Making Workshop

Birthday Parties Making Jewellery (ages 8 to adult)

Beginners to Advanced

Abbeydale Industrial Hamlet

Brand New Studio Space Qualified Experienced Tutor  
[website coming soon](http://website.comingsoon)



# HPS

HARDY PLANT SOCIETY

Gardening with hardy perennials

## THE HARDY PLANT SOCIETY

South Pennine Group

[www.southpenninehps.btck.co.uk](http://www.southpenninehps.btck.co.uk)

### SALE OF PLANTS

Sunday 20th September 2015

11.00 am – 3.00 pm

Sheffield Botanical Gardens

Free admission - everyone welcome

Refreshments Available

info@beauchiefpreschool.co.uk  
[www.beauchiefpreschool.co.uk](http://www.beauchiefpreschool.co.uk)  
0114 2746930

**Places available for September 2015**

We accept children from 2 years old

Open Mon to Fri 9am—12noon

Full Days Tue & Wed 9am—2.45pm

We have a lovely, spacious hall and a large, secure garden

Contact us now to find out more...

Our latest report in June 2015 found the provision of Early Years Education to be "Good" with recognition for the dedication and experience of staff and the great feedback from parents.

Beauchief Pre-School



## Gardening Tips for August and September

The weather just now (mid-July) has me a bit baffled. First the heatwave brought things on (I picked my first tomato a month earlier this year) then came the heavy rain causing havoc amongst the perennials that were not staked up securely. The cool winds have made things a bit difficult in the greenhouse - the tomatoes don't know whether to carry on fruiting or not.... never mind it's all part of the gardening experience.

The flowers have done very well, despite the winds. They are looking really healthy and have a good bloom size, and the peonies and roses doing exceptionally well – take a look at the picture below! We have some very plump pigeons around just now. They are pecking at my vegetables - the lettuce and cabbages have frilly edges. The slugs are also munching away, making holes in everything. I wish they would stick to one plant, and then we might have a slug free dinner (I find them a bit chewy even when they are steamed!). I don't like using slug pellets and I have tried nematoids, which slowed them down a bit, but they are still around. I'm afraid I will have to resort to the smelly old beer traps once again.

The runner beans are picking up at last after a slow start - they are not setting beans at the moment. The old gardeners used to say that if they are sprayed with a fine mist it helps with development. I'm sure that the water will not do them any harm so I will give it a try, but this treatment should not be done in bright sunlight.

I hope my reminder in the last TI encouraged you to take part in the Totley Show. The schedule is in this issue once again so I'm sure you can all find something to have a go at - photography, art, cooking, Lego modeling (for the children's section), craftwork, sculpture, woodwork, etc. Please get cracking and make your Totley show the best ever. September 5th is the date and Totley Primary School is the place!

### August

**Flowers:** Give flowers a good general fertiliser regularly. This will pay dividends in healthy plants and better blooms, and sweet peas, dahlias, and chrysanthemums especially benefit. Stake the taller plants as they grow. Cut down lupins and delphiniums as they finish flowering unless you are collecting seeds from them.

Watch out for the usual pests - aphids, earwigs, caterpillars and slugs - and deal with them as soon as they are seen.

Sow forget-me-nots, brompton stocks, pansies and violas

for planting in autumn or spring. Plant out crocus, narcissus, and snowdrops if you want to naturalise them.

Plant up any empty window boxes or tubs with bulbs. Take cuttings of pinks, phlox and penstemons. Keep picking sweet peas off to encourage more flowers. When cutting gladioli leave some foliage so as not to starve the bulbs.

**Vegetables:** Give outdoor tomatoes and cucumbers a liquid feed. Give the onions (which you are growing for the show!) special attention! Liquid feed regularly and do not let them dry out until the leaves start to yellow a bit, then bend over the leaves to encourage the bulbs to swell, and then stop watering.



Marrows like plenty of water and a high potash feed, and don't forget to pollinate by hand if insects are scarce. Slip a piece of board under them to keep them clean. Pick runner beans regularly, keeping an eye out for the largest (ready for the show!) and cut cucumbers and marrows as soon as they are ready - do not leave on the plant.

Take cuttings of herbs - rosemary, sage, mint, etc - and root in open ground or under a frame.

**Trees, Shrubs and Fruit:** Thin out fruit on apples and pears, tie in blackberry canes, clean up and clip over strawberry beds once the fruiting has finished. Use nets to protect autumn fruiting raspberries and strawberries. Plant out strawberry runners for an early crop next year - these need to be covered by a cloche from December to February. Summer prune apple, pear, peach, plum, and blackcurrants; cut out raspberry canes which have finished fruiting to about 4 to 6 inches above ground, and mulch over the area to prevent the roots drying out.

Cuttings can be taken off many shrubs such as buddleia, hydrangea, and viburnum. Cuttings of camellia, jasmine and honeysuckle should be planted in warmth.

Prune jasmine, wisteria, clematis and mock orange when they have finished flowering.

**Greenhouse and Indoor Plants:** Shade water frequently and give liquid feed. Spray with water in the mornings (except hairy-leaved plants). Take cuttings from fuchsias, busy lizzies, hydrangeas, geraniums, plumbago etc. Pot up hyacinth and freesia bulbs for Christmas - put them in a cool dark place until the shoots show.

**Lawns:** Prepare any new areas ready for sowing at the end of August, and set your lawn mower higher in drought conditions to conserve moisture. Rake regularly.

## September

**Flowers:** Keep up with the dead-heading of flowers, as this prevents moulds from forming and spoiling later flowers. Take some cuttings of lavender now - they root easily outdoors in a sheltered spot. Put them in a shallow trench to which plenty of sharp sand has been added.

Reduce the growth of herbaceous plants which have finished flowering, but don't overdo it! Stake up plants that might be in danger of rocking or breaking when the winds pick up. Take cuttings from violas, insert non-flowering shoots in a sandy soil and put them in the cold frame. In fact there are lots of plants which can be propagated this way - penstemon, calceolaria, honey-suckle, potentilla, weigela etc.

Winter flowering pansies may be producing a few flowers by now, if they are, it will pay off later to nip these flowers off now - the plants will be stronger before the winter sets in. Plant hardy primula plants, they will make better plants prior to winter. Plant out bulbs and corms and tubers in beds and borders to flower next spring.

September is the month when mildew can be a real nuisance so try to deal with it as soon as it is seen - a good fungicide will help. Pot up hyacinths, tulips, narcissi for forcing, keep them as cool as possible (48 deg F/9 deg. C) for the first 8-12 weeks. This can be achieved by covering them with 3-4 inches of moist peat in a sheltered north facing corner, If the pots are not drained, they should be kept covered from rain etc.

Towards the end of the month pot up geranium, fuchsia,

begonias which were outdoors etc., which you want to protect over winter: this must be done before the first frosts.

**Vegetables:** Gather french and runner beans regularly. Never leave any pods on the plants to become old and stringy unless they are required for seed (or you're entering the longest runner bean at the show). Earth up celery a little at a time. Prepare ground ready for planting spring cabbage later in the month. Marrows can be stored if there are too many for immediate use - hang them in nets or old nylons in a frost free but cool place. I put collars around my leeks at this time to help the blanching process; I find it cleaner than earthing them up, though a little earthing on the outside of the collar helps to keep them stable.

When the stem of main crop potatoes is set that is it cannot be easily rubbed off by pressure with the thumb, this is a sign that they are ready for lifting. Keep a weather eye out for warnings of frost so that outdoor tomatoes and marrows can be picked before they are ruined. Lift some parsley seedlings and transplant them into a frame in good soil. They will provide pickings throughout the winter if you use the lights to protect from frost.

**Trees, Shrubs and Fruit:** Deadheading is the order of the day especially for roses; you should get a late flush of flowers if you have kept up with the job. Prepare ground ready for planting evergreens, heathers and conifers. Always keep newly planted trees & shrubs well watered. Give new conifers a treat by spraying them on warm, dry, windy days.

Take cuttings of shrubs and climbers, root in a cold frame or indoors. Cover autumn fruiting strawberries 'with cloches. Prepare your storage area for apples and pears in a cool airy place. Place grease bands round fruit trees especially apples. Unwanted laterals should be removed from peaches and nectarines for the last time.

**Greenhouse and Indoor Plants:** Gradually decrease watering all round and dry off tuberous begonias, cacti, gloxinia, clivias etc. Feed plants in flower such as African violets, begonias, bush violets, chrysanthemums. As flowering finishes, discard summer annuals which have been used as pot plants.

Disbud carnations and chrysanthemums. Bring indoors tender plants which have been enjoying their holiday outdoors during the summer. Re-pot arum lilies to flower at Easter. If you want a bit of greenhouse colour in the spring, sow a few annuals such as clarkia godetia, or perhaps a few snaps. Most pot plants will stand a few cuttings taken at this time.

Pot up freesias using 5" pots; put 6 to 8 bulbs in each. Give ferns a feed of very weak liquid manure. As I always say, but it always needs repeating - watch the ventilation; close up side vents until spring. Wash off any shading except where you are growing shade-loving plants of course. Discontinue spraying and damping down.

**Lawns:** Continue regular mowing and raking. Give lawns a treat by scarifying, spiking and a top dressing of sieved potting compost. You could mix in some autumn lawn food for good measure. September is a good time to sow or turf a new lawn. I look forward to seeing you at the Totley Show.

**Cheerio for now,**

**Tom**



# Your Local Party Venue.

Facing the prospect of a birthday party or other family event?

Consider Tigers rugby club.

Local function room,  
yet out of the way

Plenty of space & still economical

Ideal for all family celebrations  
where you need a little more room,  
but want to be close by.

Sheffield Tigers Rugby Club  
Hathersage Road  
Dore.

S17 3AB

Tel: 2360075

(answer phone)

bookings@sheffielddtigers.co.uk

www.sheffielddtigers.co.uk/venue-hire



## Dronfield Landscapes

Gardens cleared and maintained, Lawns mowed,  
Turving, Tree felling & pruning, Hedges trimmed &  
reduced, Pond maintenance, Fencing etc.

for free quotation call

Chris on: (0114) 2746158 Mobiles: 07976072785 or

Richard on: 07789497104

8am-6pm mon-fri

HazelBarrow Farm, Norton S8 8BA



### Nigel Watson



#### Carpenter and Joiner

Fitted kitchens, sliding wardrobe doors with  
bespoke interiors, internal and external doors  
supplied and fitted, new handrail and spindles,  
laminated and wood flooring, locks, architraves,  
skirting board, stud walling, boxing off etc.

For a reliable and quality service

TEL: 0114 236 4778

MOBILE: 07971 528149

## PhysioFOCUS

at Totley Rise Dental Practice  
85 Baslow Road,  
Sheffield, S17 4DP



**Physiotherapy** treatment available for:

- Back and neck pain
- Sports injuries
- Sprains and strains
- Joint and muscle pain
- Arthritic pain
- Whiplash
- Repetitive strain injury
- Headaches

**Appointments: 0114 2360333**

Also available:

- Pilates classes
- Pilates 1-2-1
- Golf Fitness Screening  
(as used by consultants to UK,  
European and Australian PGAs)

For more information please call:

Emer on: 07792 422909

Rachel on: 07956 908454

## MOGGY MAID

Gail Kitchen: 07986473415



Does going away from home mean your cat is sad and unhappy?  
Does a trip to the cattery scare your cat *not to mention your wallet?*

**WORRY NO MORE!**

MOGGY MAID is on hand to feed, love and provide everything your cat needs in the relaxing comfort of its own home.

As we cat-lovers know, unfamiliar sights and smells can stress your cat, whereas leaving them in the familiar surroundings of their own home carries less worries, for your cat and for you.

If only for a night, weekend, or a month; holiday, Christmas or any time of the year, MOGGY MAID is here to help **LIGHTEN YOUR LOAD**



We promise no mischief allowed!

In a professional manner and with quality service, you can ensure individual care and attention, whilst you relax away from home.

We haven't forgotten the rest of the family; mice, rabbits, budgies, goldfish, etc will receive care and affection too.

**LOCAL FRIENDLY SERVICE**

From £12 a day

For more information, contact Gail Kitchen on:

07986473415

5 Ullswater Place, Dronfield Woodhouse

## Friends of Dore and Totley Station (FODATS)

We're now into social media! Chris Morgan has kindly set up a closed Facebook Group site for us. It's a closed site as we don't want the types of spam that some groups like ours have suffered.

Here's the link- <https://www.facebook.com/groups/877869478958991/> - so get in touch to join in and get the latest news. We'll be pleased to hear from anyone who can let us have pictures of the station as it was before 1980. We want to build up a collection and put these on Facebook in time. And we're delighted to announce that local writer and broadcaster Rony Robinson has agreed to be our patron. We'll do what we can to make sure his trains get him to BBC Radio Sheffield on time!

Our detailed response to Network Rail about the Hope Valley Capacity Scheme was sent in mid-June. The scheme covers redoubling the track through our station and beyond, building a new platform and lifts and a footbridge to reach it. We made a lot of points about matching the new work with the existing look of our station. We also said a lot about the need for safety, shelter, CCTV, signs, information and how the work will affect people living nearby. Our response has been acknowledged and the Network Rail project team have said they will come back to us with comments.

You will have seen in the news recently that the Midland Main Line electrification which was due to reach us in 2020 has been "paused" following the Secretary of State for



*As is: Dore and Totley station today*

Transport's statement in the Commons. This electrification plan only affects the main line to and from London and not the Hope Valley line. We hope that the Hope Valley Capacity Scheme won't be "paused" and Network Rail tell us we'll hear for sure this autumn. We want the application from Network Rail to the Secretary of State for Transport to authorise the work to go in this autumn as planned. If all then goes to plan, work on site will start in summer 2017. Meanwhile, we're due to meet Network Rail's Customer Manager from York who deals with station adoption groups. This is necessary to get permission to do the sort of station improvement projects that we're planning. We want to show people that we exist but we don't want our improvements to get in the way of the planned building work.

We've met the Northern Rail managers who deal with groups like ours. Northern Rail are providing us with "Your Station Needs You" posters so that we can publicise our activities locally. We are promised a Customer Information Screen later this year so we can see live train information about the 241 trains which stop at our station each week. We've met the High Peak & Hope Valley Community Rail Partnership Officer who has agreed we will get a start-up grant of £250 for work at the station such as building and filling plant containers. The Partnership also organises the guided walks and folk trains on the Hope Valley, Buxton and Glossop lines - see their website for details of the programme between July and September: [www.hvhptp.org.uk](http://www.hvhptp.org.uk)

We're also due to meet Northern Rail's Station Manager responsible for Dore and Totley and Northern Rail's Contracts Manager to talk about the state of vegetation at the station and around the Park-and-Ride. A team of Friends are going to work up a management plan so that we can

improve the look of these areas, help to maintain parts of it, replace dead trees and bushes and manage areas to benefit wildlife. Parking, or the lack of it, remains a real issue for our station. The 130 place Park-and-Ride is usually full before 8 am on weekdays. We're liaising with the organisations concerned to see how these problems can be overcome in the short and medium-term.

If you want to see a shining example of what can be done, look no further than Dronfield. The award-winning Friends of Dronfield Station started in 2007 and have revolutionised the look of their station. Both platforms have numerous sponsored plant containers, outside there is a planted pit tub on rails marking Dronfield's link with the mining and rail industries, there is new planting on a long stretch of embankment, the shelters host a children's art exhibition, outside the station there are neat lawns and borders and Friends' noticeboards with local information. We're good friends of the Dronfield Friends and in time we



*The aspiration: Dronfield station today*

hope to achieve similar great things. Not least, the Friends in Dronfield have increased their passenger numbers from around 10,000 a year when they started to over 200,000 a year now.

We continue to spread the word about our group using Facebook and posters. But please tell others - station users, friends, relatives - about what we plan to do. It doesn't cost anything to join us. All you have to do is send your details by email to [nj-barnes@outlook.com](mailto:nj-barnes@outlook.com) and we'll keep in touch with you. We won't pass your details to any other organisation. The more support we have, the more we'll be able to achieve. And in time, we're going to be needing more help with practical and admin tasks so if you can spare a few hours please get in touch.

*Mike Peart*



## Totley Music Festival 2015

The Totley Music Festival got off to a wonderful start with the Totley Primary School Concert. The children were delightfully creative and gave some stunning performances. There was a good turn-out for the Ukulele Concert in the library featuring three bands who were entertaining musically and comically. Everyone went away with a spring in their step after listening to tunes and songs such as 'By the Light of the Silvery Moon', 'We'll Meet Again' and 'Waltzing Matilda' (especially hard to pull off with Australian visitors in the audience – a long way to come for it!). "Where were you, Totley?" That's the big question for the fabulous concert provided by the accomplished Sheffield band "So What" who performed 50s and 60s music of America and UK beat groups to a small but very appreciative audience.

Using Totley Library as a new venue was a great success. With the blinds and lighting down, the raised area in the children's library provided a perfect setting for jazz – The Hot Club of Totley? The local Walker Family (Howard (vocals),



Chris (guitar), Kevin (double bass) with Phil Johnson (drums) and Jon Trier (piano – musical director for Richard Hawley) and special guest Myrtle George (with the band, left) played a fabulous concert to a packed audience. We were treated by the Chris Walker Quartet to a tight and exciting tribute to the jazz guitar and Django Reinhardt, smooth vocal-led jazz by Howard Walker and gorgeous Myrtle George sang a lovely version of 'All of Me' and a slow and sexy 'Honeysuckle Rose'.

At Mickley Hall the Variety Cabaret was compered by the multi-talented Gerry Doherty who also sang and played guitar superbly. Other contributors were John Varty who sang modern pop, Elaine Purkiss, a resident of Mickley Hall, gave a great rendition of 'Hello'. Reg McNaughton took time away from Dore Male

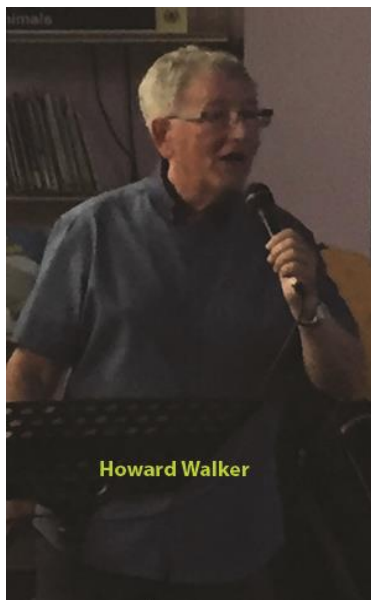
Voice Choir to entertain us with traditional songs. Rod Webster added even more variety with hilarious monologues - Albert and the Lion and The Bricklayer's Story. Music and Lyrics (Phil Harris keyboards, Sue Hare vocals, Dave Miles double bass, and John Beazer drums) played standard jazz numbers splendidly. Lovely to hear Pat Hunt again who brought us into the classical tradition with a talented piano recital. Ray de Grussa, also a resident, played us out to music he created in his unique style. Such talent all round!

The Folk Evening, once more a storming success, was compered by Pete Burnett with his usual humour and charm. He opened with 'You'll find no comfort in old custard creams' to set the tone! This was followed by the spectacular Countdown devotee Lou Marriot who sang of waking up factory workers and the life of factory girls. Tina McKeivitt (pictured left) on vocals and piano accordion with Matt Heggarty (vocals, guitar, bodhrán) sang a beautiful rendition of the 'Muckle horse's last trip home' amongst other songs. Tina's voice was wonderful and complements Matt's musicianship and song. The talented Gerry Doherty sang a wide range of splendid numbers with an Irish theme accompanying himself on guitar and entertaining with melodious voice and wit.

'Spoil the dance' back from touring France were as impressive as ever with Gaynor's pure voice lifting spirits with her fellow musicians and their excellent musicianship (Steve Brook,







Howard Walker



Elaine Purkiss



Pat Hunt

guitar and bouzouki, Sally Gay, flute and Charlie Smallwood on mandola and guitar.

Hadish Street was the youngest performer and made an unscheduled appearance to great acclaim singing Richard Thompson's 'Wild Thing'. Such an unknown talent! We'll see more of him, we hope.

John Scaife (guitar, fiddle and cittern), Geoff Trend (Mandolin and guitar) and Charlie Smallwood (mandola and guitar) gave a Celtic feel to their foot tapping set. Such musicianship! The concert was closed by Tina and Matt with a beautiful rendition of the ballad 'Come All Ye Fair and Tender Ladies' from the American Appalachian region.

And as this edition of the *Independent* goes to press, we look forward to the final event of 2015 – the concert in aid of Totley Library by the Dore Male Voice Choir. Should be a great night – we'll tell you all about it in the next issue! In the meantime, here are some more memories of the 2015 Festival....



The Ukulele Concert



L to R: Charlie Smallwood, John Scaife and Geoff Trend



John Varty



So What



Music & Lyrics



## 80 years in Yorkshire!

Many of us know that Totley wasn't always in Yorkshire and in the 19<sup>th</sup> century had been described as a small Derbyshire village in the parish of Dronfield.

Eighty years ago Derbyshire's historical border with Sheffield was moved from Limb Brook at the edge of Ecclesall Woods, to a spot near the brickworks on the way to Owl Bar, thus making us Yorkshire folk.

It didn't happen overnight and local councils were very unhappy at the prospect, putting up a lengthy fight to retain their Derbyshire identity.

### So why the change?

After WW1 Sheffield was expanding and the necessary space within its industrial heartland was becoming difficult to find.

Not only did the steel industry need land to develop their foundries and factories but also new housing was desperately required to improve living conditions and house the ever-growing population.

Some steel manufacturers had already moved out of Sheffield, many favouring the Rother Valley, and the city wanted them back within their boundary to retain the coveted 'Made in Sheffield' claim on all things steel.

Clearing the slum back-to-back housing and yards would free some space, but sites for an anticipated 15,000 new houses had to be found. The city was bursting at the seams and there were great swathes of suitable land just outside its boundary.

**Totley's situation....**Going back to 1820, the building of the turnpike (Baslow Rd) and then the arrival of the railway in 1872 had made the city accessible, and it was regarded as 'almost part of Sheffield' by Sheffield Corporation. However Totley was firmly placed in Derbyshire and was administered by Norton Rural District Council, one of the largest in the country.

Being at the very northernmost tip of Derbyshire and adjacent to Sheffield's boundary, the improved city access meant Norton Council began to look towards Sheffield for some administrative purposes and services. For example Totley had been annexed to Ecclesall Bierlow since 1837, which was in the West Riding of Yorkshire and was where the villagers registered births, marriages and deaths. Ecclesall Rural Sanitary Authority was responsible for Totley's water and sewage, and sometimes those unfortunate enough to need care in an asylum or workhouse were sent to Ecclesall Bierlow Union Workhouse at Nether Edge rather than to Derby.

In 1919 Sheffield Corporation published 'The Sheffield Extension Plan', detailing the annexation of adjacent urban and rural districts into the city boundaries. These included Handsworth, Brinsworth, Chapeltown, Ecclesfield, Wortley, Norton, Dronfield, Rotherham and Chesterfield, and aimed to increase Sheffield's boundary by 100,000 acres.

The Ministry of Health initially granted them only Handsworth and certain portions of Brinsworth and Ecclesfield. This led in 1920 to 'The Sheffield Extension Enquiry' where the city defended its case for accessing more land... and so the arguments rumbled on through the 1920's, the pro's and the con's.

Sheffield said it wanted to retain its monopoly in the steel industry for which it had earned worldwide recognition, and for that the city felt it must grow.

Derbyshire County Council brought in representatives to back their opposition.....

...An insurance company that covered medical bills saying care in Sheffield would be no better than that already

provided in Derbyshire.....Parents who felt standards of education available at the schools in Derbyshire were superior to those provided by Sheffield, despite Sheffield being the first place to provide free secondary education....Concerns expressed by residents that the Sheffield slums would creep into what was still a beautiful rural area....The important anomaly that rates in Sheffield were higher than in Derbyshire, and handouts in Sheffield lower....



And what about the Cricket League! Teams would have to move!

### In 1930 the arguments were still in progress...

*'Three parishes in Derbyshire, Dore, Totley and Norton appear to be the sport of neighbouring authorities which happen to be more populous. They have successfully resisted an attempt to include them within Sheffield's city boundary. Now the Chesterfield Rural District Council is seeking to annex them. They are likely to show fight in this case too.'*

*Where Sheffield failed I cannot believe that Chesterfield will succeed. Sheffield, indeed, could make out the stronger claim since all three places look in that direction for their business interests. A good many anomalies exist in this part of the county, so far as local administration is concerned...*

*If the Chesterfield Rural District Council is merely trying to remedy this it might be able to establish a good case, but self-interest, in the matter of rating, is sure to be suspected'* (Derbyshire Daily Telegraph 31 Oct 1930)

Three years later, as it was finally being announced that Sheffield's boundary would move to enclose these parishes, Chesterfield countered by saying a lower rate was being offered by Sheffield to the Derbyshire districts concerned in order to induce them to accept the change, and was this legal?

Norton RDC still remained firm in their resolve to stay in Derbyshire and took their objection to the House of Lords, only to fail in their appeal.

Totley officially became part of Sheffield Parish the following year in April 1934, and final ties with the past were severed when Ecclesall Bierlow Registration District was abolished in 1935.

Pauline Burnett

## Totley Scouts

We have just placed our order with Sainsburys, spending the Active Kid vouchers which we have collected over the last few months. Thank you to everyone who passed vouchers onto us. This time we have ordered sports equipment including balls (soft ones) and cricket bats.

Over the last couple of years 12 Beavers have completed the Chief Scouts Bronze Award. This is in recognition of the efforts that Beavers have put in, and for completing a series of challenges, and it is the top award for Beavers. The latest two, Charlie Duncan and Sonny Ford, have just received their award in time for moving on to Cubs. Well done!

For the first time, the entire Totley Scout Group – Beavers, Cubs, Scouts and Explorers – met together for a weekend camp at Spitewinter, Nr Ashover. In all, including parent helpers, there were 101 at the camp. The Beavers were in bunk accommodation, but the rest were in tents. The helpers catered for Beavers and Cubs, but the Scouts cooked for themselves on wood fires. We had an inflatable assault course and activities included archery, den-building, hiking, survival cooking, scavenger hunting, and lots of games. We had a mass game of Danish Longball – chaotic but fun – ask one of the children to explain the rules and you will be just as confused as everyone else!

Since then the Cubs have been on their own camp at Walesby Forest in Nottinghamshire. Here they canoed, built and sailed rafts, enjoyed a low ropes course, camp fire and cooking, with of course a sing-a-long.

About 40 Scouts and Explorers will be off to a week's camp at the end of July. They are going to Three Cliffs Bay, on the Gower in South Wales. There is lots planned, and they will be making full use of the excellent beaches and rugged Welsh landscape down there.



In the meantime Cubs have been collecting and earning money towards the Children's Hospital Appeal for en-suite ward facilities in the new wing. Money is still coming in and being counted, but there should be a nice sum to send to SCH.

All our sections are full at the moment, although there will be some coming and going over the summer break. We are being asked to take many more boys and girls into the Group, but we are unable to do so and are having to turn them away. Although the valuable army of adult helpers that comes along regularly is important, it is essential that we have more Warranted Leaders. Recently we have had to cancel two Scout nights as there were no Warranted Leaders available, and most of them are already doubling up on nights. If we can get more adults to commit to taking on a Warrant,

then activities like the ones above, plus weekly meetings, can continue, as well as being able to give places to all the boys and girls that want to enjoy Scouting.

Please take a look at our job advert if you are interested in helping any of our sections. You don't even have to commit to being available every week. The advert has attracted new helpers but, as ever, we need more help.

Richard Frost  
Chairman  
1st Totley Scouts  
TotleyChair@aol.com  
0114 236 3603

## Letters to the Editor

Dear Editor,

I'm writing to let readers know that the charity knife-sharpening by Mick Fox from Ultra Sharp, which took place at Liberty Foods in support of the Sheffield Children's Hospital, raised £100!

Damian Bower

\*\*\*\*\*

Dear Editor,

I would like to inform readers that we have some new WEA French courses starting at St Johns on Abbeydale Road in September.

We have two new beginners' courses, on Tuesday afternoons and Wednesday evenings, and an improvers' course on Thursday evening. If you are interested, you can contact me by email at [sylviamay@gmail.com](mailto:sylviamay@gmail.com) or by phone numbers on [07958 940821](tel:07958940821) or [01709 850011](tel:01709850011),

Best regards  
Sylvia May, Tutor, WEA

\*\*\*\*\*

Dear Editor,

Last October whilst walking with the Wednesday health walk, one of our members pointed out a couple of crayfish in Hay Brook on the walk from Totley Brook Road to Hillfoot Road. None of us had cameras with us, but the crayfish had pincers locked and were about 150 cm (6") in size. I wonder if any reader knows if they are American or indigenous ones and if crayfish are known to be in Hay Brook?

Kind regards  
Angela Harpham

## Don't let pain stop you from getting out there!



Let us help you keep **Activ** this summer, free from pain or limitation.

Call now for an appointment on 0114 2352727

**ACTIV**  
physiotherapy

Clinics in **Bradway**, Totley and the Hope Valley. Registered with all major insurers.

[www.activphysiotherapy.co.uk](http://www.activphysiotherapy.co.uk)







## It's all happening at TASS!

It's been a very busy term at Totley All Saints – but then, that's just how we like it!! From visits and visitors to residential and special curriculum days - it's all been happening at TASS!

### TASS School Council

Our School Council had a very busy time just before the end of last half term as they were not only involved in the interviews of new staff, but also met with Bev Coulton (Area Manager for Taylor Shaw) and Donna Lazenby, our school cook. They were asked to give their views on school lunches in general and gave their thumbs up to the new school menu. Big favourites included: fish and chips, homemade ice-cream and biscuits, chocolate brownies, lemon iced sponge, vanilla and peach yoghurt, plus Rainbow Frittatas! Our School Council has been involved in making a lot of improvements this year, including: new benches and bins on the yard, changes to the reception outdoor area and introducing raffle tickets at lunch times. The School Council is made up of: Y1: Eli Rose and Sophie Chapman-Parmar, Y2: Sam Bennett and Megan Wright, Y3: Connie Tomkinson and Jack Wild, Y4: Rose Lehan and James Buxton, Y5: Betsy Stonecliffe-Jones and Alfie Watts and Y6: Rebekah Young, Ryan Wild and Isaac Armstrong. They have done an amazing job this year and can be very proud indeed of all that they have achieved!



### TASS Green Day



Our Eco-Saints have also been busy (alongside Mrs Kirkby) organising our annual Green Day in June! All of our children were divided into teams and took part in various activities designed by the Eco-Saints themselves. These included: making cardboard robots, plastic bottle planters, junk fashion, nature collages, stick people and planting in the school flower beds.

Parents and carers were so helpful and sent in masses of items to help with activities. Thankfully, we'll be able to send a lot of these back – all in the name of recycling of course!

### Go Team TASS!

At TASS, we love our sport and take part in all sorts of events and competitions! We have a lunchtime Bailey Cup competition run by Mrs Granger and also held our Mini-Olympics on site (in addition to our Sports Day held earlier in the year at the EIS). The heat was blistering and was well supported by parents, with Team Bucharest coming first, Kiev second and Prague, third. Eleven of our pupils competed in the Athletics City Championship with Charlie Smith (Y6) becoming City Champion in the long jump and Toby Moorwood (Y5) becoming City Champion in the 600m! There were also personal bests from Eddie Mezza, Joe Perrott, Tom Storey and Sam Shipley who all finished in the top 10 in the city! Toby Moorwood is also one of the 20 boys selected for the Sheffield Schools' Under 11 team for 2015-16. He has been chosen from hundreds of boys from all over the city!

Team TASS swimmers also did us proud this term at the Sheffield Primary School Relay Competition at Ponds Forge and managed to come third in Division A - winning bronze!

In addition, an amazing 36 children from Y3, 4, 5 and 6 also took part in the Forge Sports Partnership Orienteering Competition with Y3/4 boys Teams A and B, plus Y5 boys qualified for the South Yorkshire School Games. The Y4 boys Team A ended up winning the silver medal. We then achieved a magnificent 3<sup>rd</sup> place out of 38 schools in the Orienteering League. Go Team TASS!

So what now? Well, we're in the process of getting ready for our summer production entitled: 'Our Big Green Adventure', revamping the FS2 / Reception outdoors, experiencing new year groups as part of 'Passport Day', plus saying goodbye to our amazing Y6s with our graduation event. *It's all happening at TASS!*

If you want to find out more of the exciting things that are happening at our school, then please visit our website or email us at [enquiries@totleyallsaints.sheffield.sch.uk](mailto:enquiries@totleyallsaints.sheffield.sch.uk). We'll be so happy to let you know!

*Karole Sargent Headteacher*



## Totley Open Gardens 2015

Fourteen Totley gardens were open over the weekend of 18<sup>th</sup> and 19<sup>th</sup> July. There'll be a report in the next *Independent* but in the meantime enjoy these photographs of some of them (pictures: Chris Spencer)





## Bluebells – the Spanish Invasion

They are taking over our woodlands! Spanish bluebells are non-native invaders who are escaping from our gardens, moving into our woodlands and hybridising with our much loved native bluebells.

Sheffield alone has 400 hectares of woodland (over 10% of its total area) with over 2 million trees and over 160 publicly accessible woodlands. This is more than any other city in the country.

Among these are ancient bluebell woods, such as Woolley Wood. Native bluebells are an indicator of the site of ancient woodland, which is woodland that existed before 1600, and may link back to the wildwood that grew across Britain after the last Ice Age.



*The native bluebell*

For centuries people have enjoyed the strong, sweet smell of English bluebells in spring, their deep blue hue and slender flowers; but in recent years their Spanish cousins have infiltrated from nearby gardens, and dumped garden waste, changing the nature of our indigenous bluebell woods. The Spanish variety are paler blue and often white or pink, the stems are stiffer, with wider bell shaped flowers all the way round. They have little or no scent. They cross-breed with the native variety. At Greno Woods, which is managed by Sheffield and Rotherham Wildlife Trust, there are Spanish bluebells which have spread from nearby gardens onto the outer section, hybrids in the middle, and native bluebells only in the deepest woodland.

Half the world's population of bluebells is in the UK, and although still common they are threatened not only by hybridisation with the Spanish variety, but by habitat loss and collection from the wild. One in six bluebells found in broadleaved woodland in the UK is now found to be

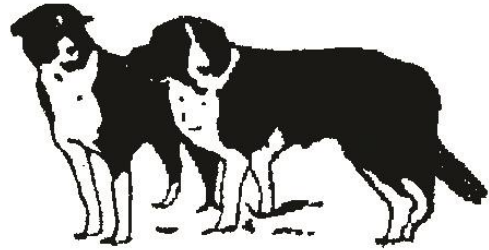
Spanish. In urban areas this is probably higher.

The bluebell wood in spring is one of nature's most stunning displays, but the heady scent and deep blue carpet of the native bluebell wood could soon become harder to find as the Spanish invasion continues.

Please consider whether you need Spanish bluebells in your garden if you live near a woodland – native varieties are available from select garden suppliers. And if you already have Spanish bluebells, make sure they don't spread – especially if you live near woodland. Please keep them within your garden boundary.

And please - never pick native bluebells or dump garden waste in woodlands.

*Sheffield and Rotherham Wildlife Trust*



## Longshaw Sheep Dog Trials Association

[www.longshawsheepdog.co.uk](http://www.longshawsheepdog.co.uk)

*(Registered Charity No 234523)*

We are pleased to announce that the Longshaw Sheep Dog Trials will take place this year on 3<sup>rd</sup>, 4<sup>th</sup> and 5<sup>th</sup> September on Longshaw Pastures in front of Longshaw Lodge, near Grindleford, starting this year at 7.30am each morning. We are very honoured this year to have as our President Mr. Graham Rudd, DL.

On 3<sup>rd</sup> and 4<sup>th</sup> there will be open class sheep dog trials when many of the "One Man and His Dog" competitors will be taking part. We are very pleased to have Mr. Malcolm Mason to judge the open classes and championship, and to judge the local class Mr. Jan Pieters, from Holland, who will be competing in the open class. Mr. John Elliott will judge the double dog class and Mr. Nick Denniff the beginners class.

At approximately 3.30pm on 3<sup>rd</sup>, subject to any unforeseen circumstances, there will be a parade of local hounds courtesy of the Barlow Hounds, Pennine Foxhounds, High Peak Harriers and the Ecclesfield Beagles.

Following the local class sheep dog trial on Saturday 5<sup>th</sup> the Longshaw Fell Race is to be run. Starting at approximately 10.30am, this is open to all adults and is enter on the field. Following the start of the fell race there will be a demonstration of dog obedience and agility.

Starting at approximately 12.30 on Saturday 5<sup>th</sup> the trials culminate in a double gather championship, which consists of the 8 highest pointed runs from both Thursday and Friday, when the winner will take home the prestigious Longshaw Championship silver tea pot.

The entrance charge is just £5.00 per adult each day, with no charge for children and free parking, (*cont p.25*)

and we start at 7.30am, weather permitting, finishing at approximately 5.30pm. For further information please contact the Secretary, Mrs. Sheila Humphreys, MBE, on 01433 651852, or e-mail [lsdta@talktalk.net](mailto:lsdta@talktalk.net)

This will be the 117<sup>th</sup> year of the Association, which is thought to be the oldest continuous sheep dog trials in England with the two world wars and the year 2001, because of foot and mouth disease, being the only years when no trials were held.

There will be a licensed bar, hot and cold food and drinks, and ice cream available. The magnificent array of trophies will be on display, so please come and join us for a day on the moors to see some of the wisest dogs in the world. We look forward to meeting you.

## Dronfield Handbell Ringers

The Dronfield Handbell team was established in 1975 by Vic Cox, who is still our leader and musical director, using a 2 octave set of bells cast in 1900 by Shaws of Bradford. The bells needed some restorative work to make them fit to play, and over the years have undergone further work, including retuning (to bring them up to concert pitch), and new handles and clappers. We have also added to the original set and now have 3.5 chromatic octaves of bells. We ring using a technique called 4-in-hand, and the team is recognised as one of the best in this style in the country.

Dronfield Handbell Ringers belong to the Handbell Ringers of Great Britain, a national charity. We have given many concerts and performances over the years, and every year donate a large percentage of our 'earnings' to charities, both

local and national. These include the British Heart Foundation, Childline, Guide Dogs for the Blind, and more recently St Luke's. For several years we have given two mini concerts, free of charge, at St Luke's for patients, their families and members of staff - one at Christmas and the other in the summer. We regularly perform for WI and other Ladies' groups and in Residential Care Homes for the elderly. We play at weddings and other special events, and give concerts with other music groups, such as Dore Male Voice Choir. We ring at regional and national rallies, where teams from all over the North East Region or the UK meet. We play within the community, for example at Ecclesall Woods in December, and have performed at the Totley Music Festival. We do not charge for these performances. We are a self-financing group, and until now have met all costs incurred ourselves.

We are now in a position where we need to raise money to buy some new bells in order to replace the ones we ring at present, which are coming to the end of their lives. The cost of this is around £15,000. We are available for hire, and can play anything you wish, from Bach to the Beatles to modern compositions. We have a repertoire of over 400 pieces to choose from!

If you are interested in coming and listening to us, or would like to 'have a go' yourself, please contact Vic Cox: [dronfieldhbr@aol.com](mailto:dronfieldhbr@aol.com) We are always looking out for good musicians to join our team, and are happy to accommodate anyone who is interested in coming along to rehearsal on Thursday evening. A love of music and a good sense of rhythm is all that is needed.

*Helen Foley*





## TOTLEY PRIVATE HIRE

### EXECUTIVE CAR TRAVEL

AIRPORTS AND LONG DISTANCE

PROP - PAUL SOUTH

24 HOUR SERVICE



Tel: 0114 283 9692

Mobile: 07974 355 528

Email: PAUL.SOUTH1@TESCO.NET



yoga@hotmail.co.uk

0114 236 9943

07708 996984

Body, Mind & Breath  
enjoy the union of yoga

YOGA CLASSES in TOTLEY & RANMOOR

Rachel Quinn BWY Dip



## B.K. JEAUVONS

### PAINTER & DECORATOR



Interior  
Exterior  
Decorating  
No Job too small

Tel: 01246 416484

and mobile 07882 278306



Domestic electrical work by  
award winning

*Lady Electrician*

- \* House rewires \* Replacement fuse boards \*
- \* New sockets and lights \* Security systems \*
- \* CCTV \* Telephone and computer points \*
- \* Garden power and lighting \*



All work guaranteed and fully  
insured. For a free quotation,  
without obligation,



ring Mandy on 07788-544225

## CHARISMA BLINDS



For  
Windows  
With Style

Sheffield Factory Showroom

106 PROSPECT ROAD  
HEELEY, SHEFFIELD

Sheffield (0114) 258 5496  
Rotherham (01709) 512113

## John Heath & Sons

AN INDEPENDENT FAMILY FUNERAL BUSINESS

*Sometime.....*

You will probably have the responsibility of making funeral arrangements. No one looks forward to this responsibility, but the death of a family member or friend brings with it an obligation that must be met. There are people who can help you meet this responsibility. We have been helping people combine the different aspects of the funeral into a meaningful service for over 125 years.

Please Call Day Or Night

(0114) 272 2222

Head Office - Earsham Street

Also at Meadowhead, Ecclesall Rd,  
Crookes and Stannington

www.johnheath.co.uk



## Tristan Swain

Garden Services and Maintenance

Established 1984

Unit C4 Sheaf Bank Business Park

Prospect Road Heeley

Sheffield S2 3EN

Tel/Fax: 0114 255 4689

Mobile: 07831 802 539

Email: tristan@tristanswain.co.uk



www.tristanswain.co.uk

Public Liability Insurance Waste Transfer Licence

## Horizon Electrical

Faults, Rewires, Sockets, Lights,  
Cooker Points, Electrical Showers,  
Phone Points, Security Lights

No job too small

Fully qualified with friendly advice

Ring Totley 236 4364 or  
mobile 07772 483154

## In the Dark: Totley Tunnel in the Days of Steam

The number of main-line railway tunnels in Britain is said to be 1,049. So in the league of British tunnels, Totley gets the "Silver" behind the longer Severn Tunnel between England and Wales. Totley Tunnel on the Hope Valley route at three miles and 950 yards long was a triumph of Victorian endeavour and engineering. This year, it will be 123 years since the tunnellers working from the Dore and Grindleford ends met in the middle. Goods traffic started running through the tunnel in November 1893 and passenger trains followed in May 1894. Day and night since then, apart from a few strike days and Christmas and engineering closures, trains continue to rumble through.

They might smell a bit, but today's diesel trains don't create masses of steam and smoke. So what was it like to drive a train through Totley Tunnel in the days of steam? Tom Hicks did that regularly in the 1950s. Tom was an engine driver working from the Royston depot near Barnsley and Healey Mills near Wakefield. Tom is now 95 and recalls the days when he drove heavy freight trains through Totley Tunnel and, later, weekend ramblers' excursion trains from West Yorkshire to Edale. Tom started work on the London Midland & Scottish Railway straight from school in the 1930s. He volunteered for army service to run crash courses for engine drivers to operate European railways in World War Two. Eventually Tom became a paratrooper and was captured at Arnhem. In 2013 Tom's son Norman Hicks wrote a book about his father's experiences "Captured at Arnhem: from Railway-man to Paratrooper". This is a vivid story from a modest man who returned to the railway after the war and continued driving trains until his retirement.



*Tom Hicks*

Tom enjoyed driving the ramblers' trains to Edale. On arrival at Edale, the coaches were put into a siding and the engine returned "light engine" (on its own) tender first to Dore to run round the triangle of lines so as to be facing the right direction to haul the train back from Edale later in the day.

For Tom this meant going through Totley Tunnel four times a day, twice with the engine's chimney first and twice with the tender first. Steam enginemmen didn't like tunnels at the best of times. The engine's fire was made up to be burning bright before the tunnel so that there was plenty of steam, and smoke from the chimney was minimised. The engine's "blower" had to be put on to increase the draught through the fire and avoid smoke, gas and flames from blowing back into the cab. The only light in the cab was a small and dim oil lamp to show the safe level of water in the engine's boiler. Totley was very wet, smoky and with no visibility. Running tender first made it worse because dust from the coal in the tender blew into the cab to add to the unpleasant atmosphere. The fireman would water the coal with a hose to keep the dust down while the driver listened for clues on how the engine was running and for the echoing cavern in the middle of the tunnel which marked the change of gradient from uphill to downhill. If the tunnel was particularly smoky then the crew would get on the cab floor and lift the metal plate covering the join between the engine and tender to try to get some better quality air. Others tried to breathe through wet handkerchiefs.

Tom and his fellow drivers spoke about working heavy freight trains through Totley Tunnel. Nowadays, diesel locomotives have powerful lights, closed cabs and air brakes on the wagons being pulled. Some of these trains on our line now have loads of over 2,000 tons. Steam engines had little or no light, open cabs and wagons which in many cases didn't have brakes. Only the engine and the guard's van at the end of the train had brakes to control a train of 400 tons or more. Very little of a steam engine's wheels is in contact with the rails and in a wet tunnel such as Totley with its rising gradient towards the middle there was a risk of the engine "slipping". This is when the driving wheels don't grip the wet and greasy rails and spin furiously to no effect. Dry sand was fed under pressure from the engine through pipes onto the rails to help the driving wheels grip, but sometimes the sand ran out or got wet and wouldn't run through the pipes.

Even worse was that a slipping locomotive created a lot of exhaust which made more smoke, reduced what visibility there was and even brought down showers of soot from the roof of the tunnel. With a heavy un-braked freight train there was always a risk of the slow-moving train starting to run backwards in the tunnel on the uphill 1 in 100 gradient. The answer was to put the fireman's shovel or handbrush out to the tunnel wall to see which way it was dragged. In complete darkness you could at least feel whether you were going forwards or backwards! This way of working continued until the 1960s when diesel locomotives started to take over.

With the few trains we have left that have opening windows rather than air-conditioning, you can still detect the unmistakeable "essence" of Totley Tunnel as you pass through as a passenger. Add to that complete darkness, dust, heat, choking air, soot and smoke and you begin to wonder why anyone wanted to be an engine driver in those days!

*Mike Peart*



# Totley Independent Poetry Workshop

## Sally Goldsmith

Last month's poem to stimulate something from you was 'Hands' by Jean Sprackland – about a woman serving up in a fish and chip shop. I asked you, like her, to watch someone at work. Ann Lee sent in a great poem about the man who cuts the grass in Greenoak Park. The way 'the sea of green' and the end words that rhyme with 'green' keep coming back echo the repetitive and rhythmic nature of the task. It sets up a lovely lyricism. And of course, the sea theme links in with the man's dream – of fishing. The fountains of grass too. I love the slight humour and conversational tone of 'at least you can see where he's been.' The poem seems to want to settle into regular stress and rhythm and I think there may be a need to be careful here with consistency. Also there's a slightly archaic sounding and unnatural word order in 'worms and centipedes they're hoping to find.' But a thoughtful, gentle poem which I enjoyed immensely.

### **The Park Grass Cutter** by Ann Lee

Up and down a sea of green.  
Impeccable lines of symmetry.  
Up in the cab, ear-defended, alone,  
Slicing sward with blades so keen.

Maybe he's dreaming of fishing  
Catching grayling, perch or bream  
As he drives the grass gobbling tractor  
Up and down a sea of green.

Daisies and clover get razed to the ground  
Fountains of herbage streaming behind.  
Magpies and crows, seek food in the turf  
Worms and centipedes they're hoping to find.

Must be monotonous, day after day, but  
At least you can see where he's been.  
The lush verdant carpet is turning to hay  
As the soft breeze tousles the sea of green.

This month's challenge uses this poem as stimulation:

### **Litter** by Imtiaz Dharker

At Derby station  
on the pavement where you stood  
I leave your shoes.

At Sheffield  
In the café where you sat  
I leave the orange scarf.

On the Liverpool ferry  
I leave your overcoat  
by the freezing rail

where you pointed out  
Hope Street.  
On Hope Street

at the traffic lights  
between the two cathedrals,  
I leave your photograph.

On the platform  
at Euston, your suitcase  
with green tags.

At the front door  
I leave grieving.  
Coming in, I say your name.

Saying your name, I bring you home.

The poet has evoked loss here through the resonance of objects and places connected to the story of a past relationship. It's a simple, spare but skilful poem – no fancy language. Could you do something similar – keep your poem spare and pared down but find places and the specificity of things – like the 'orange scarf', 'the suitcase with green tags' to summon up a lost relationship?

Please send your entries to Sally Goldsmith, [goodsally@googlemail.com](mailto:goodsally@googlemail.com) by Wednesday 7<sup>th</sup> September. I'll choose one to publish and comment on.

*Sally Goldsmith is a prize winning poet, script and songwriter. You can order her collection of poetry, 'Are We There Yet?' through [www.poetrybusiness.co.uk](http://www.poetrybusiness.co.uk)*

# Totley Rise Methodist Church

## Summer Services at Totley Rise Methodist Church

9.00 am Early Services (1<sup>st</sup> and 3<sup>rd</sup> Sundays). A quieter, more traditional service.

9.30am (2<sup>nd</sup> and 4<sup>th</sup> Sundays) Toddler Praise aimed at the under 5's and their parents/carers

10.30 am Mid-morning Service every Sunday - An informal and contemporary service with a monthly Communion

6.30 pm Reflective Worship: every Sunday. A quieter space for worship and listening to God

9.30 - 10 am Tuesday Prayer, every Tuesday. Prayer for the world, community and for healing and wholeness in the Church

## Holiday Club

Mon 24 August - Wed 26 August:

Totley Rise Methodist Church is running a Holiday Club for young people this August. 10.00 am to 12.15 pm (register from 9.45 am) For children aged 5 to 10 years old. Cost is £3 per child per day, or £8 for the three days.

The theme is Mega Makers, making big things from small. Together we explore God's love to find how vast it is. There are games, stories, DVDs and crafts. You will have fun and meet new friends. All staff and helpers are CRB (now called DBS) checked.

Contact Rachel on 07912352543 or at [racheltrm@yahoo.com](mailto:racheltrm@yahoo.com) for more details.

## Ongoing Events (and see Totley Diary, p.34)

### Knit, Natter, Craft and Chatter

Every Tuesday 12.00noon -3.00pm Totley Rise Methodist Church Centre. This busy and friendly group has been a great success. They aim to include more people from the area, even the housebound. Housebound does not mean isolated. The group will happily provide wool, needles and a chat for those who cannot travel to the church. Young people are also welcome as part of our community. There are skilful, lovely ladies ready and willing to help those new to knitting and sewing.

Many charities benefit from the groups' work: Butterfly Wings (stillborn babies), Sheffield premature baby unit and the Christmas shoebox appeal. Sheffield Royal Society for the Blind have adopted knitted Ellie the elephants as their mascot and have given a certificate of grateful thanks. Members can knit/sew (a sewing machine is available) for their chosen charities.

Maxine, the organiser, says that all the ladies love coming. Men are also welcome. You can stay for as long as you like up to three hours. We offer tea, coffee, biscuits and, most importantly, friendship.

**Little Lights** Wednesdays 1.30pm - 2.30pm during term time. A chance for Mums/carers, babies and pre-school children to meet for songs, fun, snacks and crafts all based on a bible story. Contact Rachel on 07912 352 543 for more details.

**Meeting Place** Every other Wednesday afternoon 2pm - 3.30pm. A Meeting Place at Totley Rise Methodist Church. All parents and carers are welcome with their babies and toddlers. There will be a bible story, singing, prayer and a chat with each other to discuss the challenges of parenting. Tea and coffee will be provided. Please contact Rachel on 07912 352543 for further information.

**Tuesday Ladies** 2<sup>nd</sup> Tuesday of each month at 8.00pm, Totley Rise Methodist Church Lounge. About 35 ladies consisting of both church and non-church members meet to enjoy speakers or a quiz or beetle drive.

Sometimes the evening includes food such as salmon and strawberries or cheese and biscuits. If you would like more information please call Janet Savage on 01142369002.

## TOADS November Production

Totley Operatic and Dramatic Society's next production will be a comedy written by Steve Franco, entitled "In-Laws, Outlaws, and Other People (That Should Be Shot)". Yes, really!!



Sarah Scott is directing this time and, never one to baulk at a challenge, Sarah's choice of play has a cast of 15 people! Quite daunting by anyone's standard, but if anyone can pull it off, it is Sarah! I am sure you will enjoy this very funny play.

The dates for your diary are Wednesday 18<sup>th</sup> November to Friday 20<sup>th</sup> November at 7.30pm and Saturday 21<sup>st</sup> November at 2.30pm.

I know that it is hard to imagine a dreary November when we are enjoying such warm weather, but 'In-Laws, Outlaws etc.' will be just the thing to put a smile on your face and a warm glow in your heart!

The venue is as usual St John's Hall, Abbeydale Road South. Please call 0114 2351206 to reserve your ticket or contact any TOADS member - we look forward to seeing you there.

As always, if you are interested in treading the boards or helping out backstage, why not pop down to the Guild Room at St John's Hall any Tuesday at 7.30pm. Or contact me, Anne Bettridge, on 01246 460318, or any TOADS member. Or visit our web-site [www.toadsdrama.co.uk](http://www.toadsdrama.co.uk)

Wishing you all a very pleasant summer.

Anne Bettridge



## Transport 17

Hello everyone! Thank you everyone who turned out to our coffee morning on 4th July, it was great. Our newly appointed Fund Raiser, Sandra Longley, threw in a cake stall as an extra and it raised £100. The cakes and buns were home-made and very yummy! Including donations amounting to £40, we raised £410 - thank you to all concerned, especially the local businesses that donated prizes for the raffle.

Our next outing will be the Totley Show on Saturday 5th September so we look forward to seeing you then.

Another surprise is that we will be holding our Christmas Fayre at the Cross Scythes. They have very kindly offered to let us hold it mid-November so please watch this space. We will be wanting any unwanted gifts and also home-made cakes on the day so any donations of unwanted gifts can be left at our office on Baslow Road, (obviously the cakes not until the day before or on the morning!) It promises to be good especially as we will have more space and the luxury of the Cross Scythes hospitality which we know is second to none! The date will be finalised by the next issue so please watch this space.

We still need more Escorts and Volunteers on the vehicles so if you have any spare time please contact John Savournin or Michael Finn at our Baslow Road office.

See you all soon.

Felicity Revill





## Friends of Gillfield Wood

[www.friendsofgillfieldwood.com](http://www.friendsofgillfieldwood.com)

The group has been busy running a number of outdoor events recently.

**First, Chris Brewster writes about the excellent Flora Walk on 10<sup>th</sup> May:** A good-sized group of us set off from the Scout Hut with FOGW member Rebekah, who is an ecologist working in the Peak Park. Luckily the weather was warm and sunny. Rebekah pointed out the varied species of flora around our feet and explained about the three categories that they belong to.



*The group meets for the Flora Walk*

'Competitors' like the sycamore tree fight for space with other plants while 'opportunists' like the dandelion nip in and take hold wherever they can. I liked the idea of the laid back 'stress tolerators' which just get on with it and don't worry - the lovely wood anemones amongst them.

Rebekah was full of interesting facts, from the pendulous sedge being an awful weed; ladies' smock's other name being the cuckoo flower (because it comes into flower when the cuckoo arrives) and the yellow archangel being an indicator of the wood's ancient status. In addition, we learned that the seeds of wood anemone disperse no further than 13cms from the parent plant which means that the plant colonises new sites very slowly.

Soon we were all staring at a small insignificant plant which made Rebekah's day - one of a collection of sedges on the Derbyshire side of the stream that is indicative of high-quality wet grassland habitats. Where had the hours gone? What a thoroughly enjoyable morning! I hope we can revisit next year with such an accomplished and knowledgeable leader.

\*\*\*\*\*

**Second, Paul Hancock writes about taking part in a wet but brilliant morning Surveying the Life in Totley Brook on 13<sup>th</sup> June:** I'd been geared up for months for the Friends of Gillfield Wood's Bio-Blitz, and with many experts on all types of plants and animals aiding us, it was going to be superb. Then came the rain!

We had known about the forecast for a good few days, and it would be one of those forecasts that were correct almost to the hour. At 9am we actually had a band of five merry investigators parked at the far end of Totley Hall Lane despite the rain. That was because we were after freshwater invertebrates such as caddis fly and mayfly larvae.

Stuart Crofts led the expedition with stout table (plastic but strong) and large dishes for examining samples from Totley Brook. We set up store close to the Totley Hall Lane entrance to the wood. Across the morning Stuart took three good-sized samples - one over rapids, one in a quieter stretch and one from a stream which arises in Little Wood and deposits its contents into Totley Brook.



*Members of the Stream Survey (photo: Chris Brewster)*

The time spent was well worth it. Stuart not only helped us identify the invertebrates but responded with many interesting anecdotes about the animals we were finding. I now appreciate that mayflies are an ancient group of insects that undergo a final larval moult producing two 'skins' when the adult emerges. This 'subimago' moults once more to become the final adult (imago). Two of them obliged us by actually emerging in our sorting tray.



*Caddis Fly (photo © Derek Bateson)*

We also found stonefly and caddis fly larvae, various larvae of crane flies or daddy-long-legs, black flies, and plumed gnats (also called buzzers or non-biting midges). A fish in our first sort was a 6cm bullhead, while in a second sort we had a very young fry (about 2-3mm). Also of tiny size was a black water cricket only 2mm long scuttling on the water surface.

Stuart had on a previous occasion discovered seven of the eight caddis larvae that indicate that Totley Brook is very clean. We were delighted when he found the remaining larva completing the set.





*Our Bullhead! (photo: Chris Brewster)*

The rain? Well it simply did not bother us and the time flew by which can certainly be attributed to the enthusiasm instilled in us by our expert, Stuart Crofts.

\*\*\*\*\*

**And a Bird Walk on 16<sup>th</sup> May** attracted FOGW members and, pleasingly, non-members too. In total eighteen people saw and heard a number of different resident bird species in and on the edge of our wood.



*Blackcap (Library picture)*

One member commented on the amount of bird song and asked, with a smile, why he had got up so early two weeks before to hear the dawn chorus when he thought this walk was even better for bird song. The leader had to agree especially when chiffchaff were performing so well high in the trees as we approached the wood and a blackcap exploded into song from cover quite near to us when we stood by the bridge at the foot of Shep's Hill. These two warblers are visitors to our wood in spring and summer and always add something special to our walks at this time of year. Other summer visitors included swallows, house-martins and swifts that we watched flying above the fields on the north side of the wood as they hunted for flying insects. One member of our group was particularly pleased to see swifts as they were the 'first of the year' for him; we stood just outside the wood and admired their strong fast flight as they silently skimmed over the tops of the trees.

To add to the pleasures of the walk, the swathes of bluebells were an absolute picture as we wandered through the wood, and then, at the end of the walk, we managed to glimpse a couple of butterflies trying to find, in long grass, shelter from the cold wind. We hope a few

more butterflies will put in an appearance on the Bird and Butterfly Walk on Saturday 1<sup>st</sup> August.

\*\*\*\*\*

In September we will try to hear and see some bats on a Bat Night, on the 9<sup>th</sup>, and we will be surveying the wood for fungi on a Fungi Hunt on the 26<sup>th</sup>. And on October 4<sup>th</sup> we will hopefully do some small mammal trapping and after close inspection we will release these tiny creatures back into the wood they inhabit. Please join us - no experience necessary - and you will be made most welcome as will families. See our website [www.friendsofgillfieldwood.com](http://www.friendsofgillfieldwood.com) for more details regarding these future events and read about the History of the Wood! It's fascinating, and our Sally Goldsmith has promised to do another one of her excellent History Walks through the wood in the new year. So much to look forward to.

*Chris Measures*

## Holmesfield Flower Club

Wednesday 19<sup>th</sup> August, 7.30 pm: Demonstration of Flower Arranging entitled "Natural Elegance" by Rachel Poole (NAFAS Area Demonstrator) at Holmesfield Village Hall, Vicarage Road (Off Woodside Avenue), Holmesfield, S18 7WZ. Ample parking. Tickets available at the door - visitors £7.00, members £3.50 to include refreshments. The arrangements will be raffled at the end of the evening. All are welcome.



Wednesday 16<sup>th</sup> September, 7.30 pm: Evening Workshop entitled "Autumnal Designs" - Tutor: Jean Fordham (NAFAS Area teacher). Non-members are welcome to take part in this workshop (fee £4.00). Holmesfield Village Hall, Vicarage Road (Off Woodside Avenue), Holmesfield, S18 7WZ. Ample parking. Contact Sandra 01709 541197 or Diana 0114 2377601 for list of materials required or for further details.


(Holmesfield Flower Club's 2015 programme can also be viewed on the NAFAS North Midlands Website - [www.flowersnorthmidlands.co.uk/](http://www.flowersnorthmidlands.co.uk/))

# TUFF-ROOF

*The Tuff Roof System comes with a 25-year guarantee*

**THE LEADERS IN SEAMLESS FLAT ROOFING & BALUSTRADES**


**PERMANENT SOLUTION TO YOUR FLAT ROOF PROBLEMS**



**TEL: 0114 2899286    [www.tuff-roof.co.uk](http://www.tuff-roof.co.uk)**

TUFF ROOF, 3 LITTLE CHATSWORTH, HOLMESFIELD, DERBYSHIRE, S18 7SA






## Bus Consultation

As many readers will know, a City-wide consultation on changes to bus routes and schedules was held in July. By the time you read this issue, the consultation will be over, and the final decisions awaited. However, the consultation itself has not been without its critics.

This consultation was pretty important, because many routes, operated both by First and by Stagecoach, across the whole city are affected. Despite this, the consultation was announced by the South Yorkshire Passenger Transport Executive on July 1<sup>st</sup>, and the first consultation was scheduled for July 3<sup>rd</sup>! Details were not on their web site until 4<sup>th</sup> July, and as we go to press, details of city centre bus routes and termini are still not available.

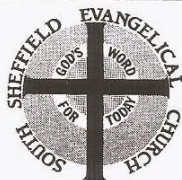
For Dore, Whirlow, Totley and Bradway, the venues for consultation meetings were Bradway Community Hall and Bents Green Methodist Church – neither of which are serviced by a public bus route or have car parks! We're told that Dore offered a free hall with parking but the officer concerned said he was too busy to look at another alternative! And at the Bradway consultation meeting, it seems that the details of proposed route changes for the city centre were not available!

Roger Hart has received feedback from two people who attended. One said it was very good as he was able to tell them a lot of things, and the other said it was a waste of time as not one officer wrote anything down – apparently they had heard all of the complaints before. This participant did not think that the consultation would make any difference as the decisions were already made. Sound familiar?

The main complaint from many has been the change of the Dore bus route which will not go past the Royal Hallamshire Hospital, but will travel down the length of Ecclesall Road instead. The Totley and Totley Brook routes will pass the Northern General hospital, but will terminate at Wadsley Bridge instead of Ecclesfield. It was hoped, and was suggested by First, that the routes would terminate in the town centre, to avoid the regular 'congestion on Barnsley Road'.

Bradway buses are affected more than most other local routes, with a confusing rearrangement of routes and timings. Bradway Action Group and Bradway NHW have details, or see Streetlife.com.

To add spice to this debate, tram track is being replaced in different parts of the city, so check all your routes if you intend going near to a tram track!



New to the area or looking for a  
Non Denominational Independent Fellowship?  
Join the Christian community in worship at

**South Sheffield Evangelical Church**  
**Greenhill Parkway, Bradway S8 7JP**

On Sundays @10.45am and 6.30pm  
For more information visit [www.sseconline.com](http://www.sseconline.com)



## Totley History Group

### Programme 2015

Meetings take place at Totley Library at 7.30pm

August: No meeting

Sept.23<sup>rd</sup> The History of Measurement from the Romans to James Chesterman Tools by J K Nicholson.

Oct. 28<sup>th</sup> Open Meeting around WW2 – Artefacts and Memories.

Nov.25<sup>th</sup> The Mystery Box – Leo and Malcolm Leader.

Dec.16<sup>th</sup> Quiz night and good company.

## Hazel Perfect

Barry Mettam writes: Dr Hazel Perfect, late of 'Penn Green', Marstone Crescent, Totley, died peacefully in the Fulwood Lodge Nursing Home, aged 87, after a long illness. The funeral was at Hutcliffe Wood Crematorium, on 30 July. A very talented lady, who will be sadly missed.

### Jack welcomes customers old and new to **THE CROWN INN**

Hillfoot Road, Totley  
Tel: 0114 2360789

A great place to drink, eat and relax with family and friends.  
**The Crown** offers a fantastic range of drinks including four Cask Ales. Our Head Chef, Jamie Oliver, provides fantastic Homemade pub food at excellent prices and we promise you the BEST homemade chips in Yorkshire.

#### Our food is served:

**Tuesday to Friday**  
12:00-15:00 / 17:00-21:00  
**Saturday** 12:00-21:00  
**Sunday** 12:00-20:00

We are open for  
drinks:

Tue – Thu. 12:00 – 23:00  
Fri. – Sun. 12:00 – 00:00

Golden Moments Menu available  
for senior citizens  
two courses just £6.50 and  
three courses for £7.95

Tuesday night is Sizzling Night with excellent currys and sizzlers available alongside the dinner menu.

Wednesday & Thursday nights are Steak and Burger Nights.

Saturday night is Music Night with Live Music starting from 8:30

Sunday night is Quiz Night, Irish Bingo and Open the Box starting from 9pm.

We look forward to seeing you all very soon  
For more info go to [www.crowninnsheffield.co.uk](http://www.crowninnsheffield.co.uk)  
Or find us on facebook at [www.facebook.com/thecrowntotley](http://www.facebook.com/thecrowntotley)

# TOTLEY SHOW ENTRY FORM 2015

THE TOTLEY SHOW THIS YEAR WILL BE HELD AT **TOTLEY PRIMARY SCHOOL, SUNNYVALE ROAD**  
ON **SATURDAY, 5<sup>th</sup> SEPTEMBER**

**ENTRIES SHOULD BE SUBMITTED BETWEEN 8.45am AND 10.45am.**

1 No entry in any class should have been in previous Totley shows.

2 Entries may be donated to be auctioned at the end of the Show but this is not compulsory nor a condition upon which entries will be accepted

3 Prize money may be collected from 1.45pm

4 If fewer than three entries in a class only a First Prize will be awarded except in Children's Section

5 Any prize monies not collected by 4pm will be put towards next year's Show

6 You may enter as many classes as you wish (The more the merrier!)

7 if an entry does not fit a class, it can be left for viewing but no prize will be given and there will be no entry charge.

8 You may only collect your entries after the public viewing ends at 3.15 pm

9 Goods left after 3.30pm will be auctioned.

10. Entries entered at owner's risk.

## SHOW PROGRAMME

**8.45am to 10.45am** Entrants' registration

**11am to 12.30pm** Judging and awarding of certificates

**1.30pm** Doors open to the public. Admission 50p, children 20p

**1.45pm** Official Opening and collection of prize money

**3-00pm** Raffle Draw

**3-15pm** Prize giving followed by auction of donated items

**PRIZES: First £3, Second £2, Third £1**

**Entries 50p each**

**PLEASE BRING THIS COMPLETED FORM WITH YOU WHEN YOU BRING YOUR ENTRIES AND FILL IN PRIOR TO REGISTRATION**

NAME ..... TEL NO .....

### HANDICRAFT SECTION

- 1 Hand knitted or crochet garment
- 2 Decorative cushion
- 3 Soft toy
- 4 Tapestry
- 5 Cross stitch
- 6 Collage, any medium
- 7 Greetings card
- 8 Quilting/Patchwork

### DOMESTIC SECTION

- 9 Victoria sandwich - as recipe below
- 10 Dundee cake - as recipe below
- 11 Carrot cake
- 12 5 Biscuits
- 13 3 Fruit Scones
- 14 Apple pie
- 15 Jam
- 16 Lemon curd
- 17 Marmalade
- 18 Chutney

### FLORAL SECTION

- 19 Floral arrangement - 18" high 10" x 10"
- 20 3 Cut Flowers of any variety in season - home grown
- 22 Flowering plant in pot

### FRESH PRODUCE SECTION

- 23 1 plate 4 Eating apples
- 24 1 plate 4 Cooking apples
- 25 1 plate 8 Blackberries
- 26 4 matching Potatoes
- 27 3 matching Leeks
- 28 3 matching Onions
- 29 5 matching Runner beans
- 30 1 plate 5 Tomatoes
- 31 1 Cucumber
- 32 3 Courgettes
- 33 Largest onion
- 34 Heaviest marrow
- 35 Longest runner bean -1 per person

- 36 1 plate 3 eggs from own hens - No embellishment

### ART SECTION

- 37 Oil or acrylic painting
- 38 Water colour
- 39 Pen and ink sketch
- 40 Pencil sketch
- 41 Open multi-media
- 42 Upcycled art/sculpture
- 43 Sculpture, any medium

### PHOTOGRAPHY SECTION

- (prints only)
- 44 Black & white
  - 45 Creative
  - 46 Wildlife
  - 47 Landscape

### WOODWORK SECTION

- 48 Wood turning
- 50 Wood sculpture

### CHILDREN'S SECTION

- 51 Vegetable/fruit animal - up to 8
- 52 Vegetable/fruit animal - 9 - 14
- 53 3 decorative Buns - up to 8
- 54 3 decorative Buns - 9-14
- 55 Wobbly Wobbly Jelly - up to 14
- 56 Flower arrangement in an eggcup - Up to 14

- 57 Painting - under 5
- 58 Painting - 6-8
- 59 Painting - 9-11
- 60 Painting - 12-14

**NB all Lego models max size 25cm sq**

- 61 Lego model - 5-8
- 62 Lego model - 9-14
- 63 Colour photo - up to 14
- 64 Open, any medium eg Hama beads - Up to 14

### DUNDEE CAKE

- 175gms/6oz Plain flour
  - 125gms/4oz Margarine/Butter
  - 125gms/4oz Soft brown sugar
  - 2¼ tsps Baking powder
  - 1 rounded tsp Mixed ground spice
- METHOD:** Use a 7" deep cake tin.

- 3 eggs
- 125gms/4oz Raisins
- 125gms/4oz Sultanas
- 125gms/4oz Currants

- 75gms/3oz Chopped mixed peel and chopped cherries
- 40gms/1.5oz Blanched almonds to decorate

### VICTORIA SANDWICH

- 125gms/4oz Margarine/Butter
  - 125gms/4oz Self raising flour
- METHOD:** Use two 7" sandwich tins.

- 125gms/4oz Caster sugar
- 2 eggs

Number



## TOTLEY & DISTRICT DIARY

### MONDAYS

**COFFEE MORNING**, All Saints' Church Hall, 10am-noon  
**TAI-CHI**, United Reformed Church, Totley Brook Road, 11.30am-12.30pm  
**RAINBOWS and GUIDES**, All Saints' Church Hall, 5.45pm-9pm  
**SLIMMING WORLD**, Abbeydale Sports Club, 5.30 pm and 7.30 pm, Jo Elsey: 262 0523 or 07590 545253

### TUESDAYS

**PILATES**, The Old School, Dore, 9.15-10.15am. Phone Teresa Tinklin 07906 312372  
**COFFEE MORNING**, Totley Rise Methodist Church Hall, 10am-noon  
**KNIT, NATTER, CRAFT & CHATTER** Totley Rise Methodist Church, 12 noon - 3.00pm  
**CITIZENS ADVICE BUREAU**. Drop in, free, impartial, and confidential. Totley Rise Methodist Church, 10am-noon

### WEDNESDAYS

**CRAFT GROUP**. Totley Library, 2pm  
**PILATES CLASSES**. Dore Old School, 9.00-10.00 and 10.15-11.15. Contact Caroline - Tel: 0781 722 0324, email caroline1north@btinternet.com, www.pilatescarolinenorth.co.uk  
**COFFEE in the LIBRARY**. 10am-11.30am  
**TODDLER GROUP**. 10am-11.30am, All Saints' Church Hall. Details tel. Andy Holmes 0114 236 2088  
**HEALTH WALKS**. 10.30am, Totley Library foyer. Phone Tina, the Health Walk Ranger: 0114 203 9335  
**MODERN SEQUENCE DANCING**. All Saints Church Hall, 8pm-10pm

### THURSDAYS

**BELROBICS**, United Reformed Church, 9.15-10am, email: jenny@belrobics.co.uk or tel 07816 850132.  
**NCT COFFEE GROUP FOR DORE TOTLEY & BRADWAY**, 10am-noon, for mums & babies/toddlers, various locations. Phone Lucy Street 07837 000405 or email: lucy@streetr.plus.com for further details  
**ROCKCHOIR**, United Reformed Church, Totley Brook Rd, 11.30 - 1.00pm. See www.rockchoir.com or call 01252 714276

### FRIDAYS

**PUSHCHAIR CLUB**. Totley Rise Methodist Church Hall. 1.30pm-3pm. Tel. 07912 352543 for details  
**PILATES CLASS**, United Reformed Church, Totley Brook Road, 6.15pm-7.30pm **also new class 1.30pm to 2.30pm**, Phone Emer Coffey 07792 422909  
**PILATES**, The Old School, Dore, 9.15-10.15am, 10.30-11.30am. Phone Teresa Tinklin 07906 312372

## AUGUST

**SUN 1<sup>st</sup> FRIENDS OF GILLFIELD WOOD**: Bird and Butterfly walk with Chris Measures. Meet by the Scout Hut, off Aldam Road at 8:30am. Bring binoculars and cameras. If wet, it's best to have strong shoes or boots.

**SUN 2<sup>nd</sup> MINIATURE TRAIN RIDES** Abbeydale Road South. 1 pm - 5 pm (weather permitting) Car Park closes 5.15pm. £1.50 per ride per person. See [www.sheffieldsmee.co.uk](http://www.sheffieldsmee.co.uk)

**WED 12<sup>th</sup> TOTLEY PROBUS CLUB** 10 am Totley Rise Methodist Church. Talk: Michael Hodgkins, 'Accidental Author' (by a retired Fire Officer). Visitors welcome.

**SUN 16<sup>th</sup> MINIATURE TRAIN RIDES**. Abbeydale Road South. 1 pm - 5 pm (weather permitting) Car Park closes 5.15pm. £1.50 per ride per person. Teddy Bear's Picnic - Fund Raising for Children's Hospital Charity - meet Theo the Bear! See [www.sheffieldsmee.co.uk](http://www.sheffieldsmee.co.uk)

**WED 26<sup>th</sup> TOTLEY PROBUS CLUB** 10 am Totley Rise Methodist Church. Talk: Michael Thacker, 'Japan'. Visitors welcome.

**SUN 23<sup>rd</sup> FRIENDS OF GILLFIELD WOOD**: Practical conservation morning, 10 am. Meet Baslow Rd bus terminus. Refreshments, tools etc. provided. Please wear strong footwear and appropriate clothing. All levels of help required and guidance given. [www.friendsofgillfieldwood.com](http://www.friendsofgillfieldwood.com)

**SUN 30<sup>th</sup> MINIATURE TRAIN RIDES** For details see above.

**MON 31<sup>st</sup> MINIATURE TRAIN RIDES** For details see above.

## SEPTEMBER

**WED 9<sup>th</sup>: FRIENDS OF GILLFIELD WOOD**: Bat Walk with Derek Whitely, from the Sorby Small Mammals Group. This is an event to survey the wood for bats. Meet at the end of Totley Hall Lane by 8pm. You are advised to have good footwear.

**WED 9<sup>th</sup> TOTLEY PROBUS CLUB** 10 am Totley Rise Methodist Church. Talk: Mike Harrison, 'History of the Ukulele'. Visitors welcome.

**THURS 10<sup>th</sup> to SUN 13<sup>th</sup> - BEAUCHIEF ABBEY OPEN DAYS** Thus, Fri & Sat 11.00am - 4.00pm, Sun 1pm - 4pm (11.00am-12.30 Holy Communion Service) Beautiful park and ancient woodlands. Used for church services since 12<sup>th</sup> century. Original Medieval Tower; 17<sup>th</sup> century Chapel; remains of old monastery cloisters and fishponds. Beauchief Abbey Lane, S8 7BD. Refreshments available Sat and Sun. Bookstall, cards and plants for sale See [www.heritageopendays.org.uk](http://www.heritageopendays.org.uk) [www.beauchiefabbey.org.uk](http://www.beauchiefabbey.org.uk)

**SUN 13<sup>th</sup> MINIATURE TRAIN RIDES** For details see entry for 2<sup>nd</sup> August above.

**TUES 15<sup>th</sup> TOTLEY TOWNSWOMEN'S GUILD**: 'Birds, Bees, Butterflies in the Derbyshire Dales', talk by John Lintin Smith. Totley Rise Methodist Church Hall, 10 am.

**SUN 20<sup>th</sup> FRIENDS OF GILLFIELD WOOD**: Practical conservation morning, 10 am. Meet Baslow Rd bus terminus. Refreshments, tools etc. provided. Please wear strong footwear and appropriate clothing. All levels of help required and guidance given. [www.friendsofgillfieldwood.com](http://www.friendsofgillfieldwood.com)

**WED 23<sup>rd</sup> TOTLEY PROBUS CLUB** 10 am Totley Rise Methodist Church. Talk: Graham and Ann Cresswell, 'Discovering Southern Italy'. Visitors welcome.

**WED 23<sup>rd</sup> TOTLEY HISTORY GROUP**: 'History of Measurement from the Romans to James Chesterman & Co. (toolmakers of Bow Works, Pomona Street, Sheffield)', with J K Nicholson. Totley Library, 7.30 pm.

**SAT 26<sup>th</sup>: FRIENDS OF GILLFIELD WOOD**: Fungi Survey with Steve Clements from Sorby Fungi Group. This is a second event by the Friends of Gillfield Wood to survey the wood as much as possible. There will be opportunity to learn about fungi from experts in the field. We will meet at Totley Hall Lane by 10:30am. Wear good footwear.

**SUN 27<sup>th</sup> MINIATURE TRAIN RIDES** For details see entry for 2<sup>nd</sup> August above.

Mark and Sally Fletcher invite you to

**The Grouse Inn**

**Longshaw**

Sheffield S11 7TZ

**Meal times:-**

**Mondays 12.00 to 2.30pm**

**Tuesdays to Friday's 12.00 to**

**2.30pm and**

**6-30pm to 9-30 pm**

**Saturdays 12.00 to 3.00pm**

**and**

**6.30pm. to 9.00pm (drinks - open all day)**

**Sundays 12.00 to 9.00pm**

**Phone 01433 630 423**

**WE ARE  
MACMILLAN.  
CANCER SUPPORT**



# Shepley Spitfire

Once again on the 25<sup>th</sup>  
of September and the  
team and I will be  
supporting Macmillans with  
a coffee morning!

Our doors will be opening from 9am with tea, coffee,  
and cake all available for a generous donation. So get  
your bake on and come a help us raise money for a  
very worthy Charity



We also see the return of the  
Premiership in starting in  
August and The Rugby World  
Cup Starts in September. All games will be  
shown at the pub in HD and if you get  
your season ticket with us you can receive  
offer off selected drinks during live  
matches





51-53 Baslow Road, Totley Rise. S17 4DL.

**Call 0114 2364238**

Enjoy delicious freshly  
cooked food in our  
**NEWLY REFURBISHED**  
coffee shop

Why not come in and sample our wide range of hot & cold sandwiches and home made produce, freshly made daily to eat in or take away. Cakes, quiches and pies can be made to order if required. All produced from locally sourced suppliers.

- Fresh Roses bread delivered daily & available to order
- Selection of cooked meats sliced to your specification
- Superb selection of fine cheeses, preserves & pickles

Look out for our daily special meals or join us for breakfast.  
**All available to take away.**



If you are having a party or family gathering why not let us take the strain and provide a buffet for you.



*Where quality and  
friendliness count*



**GWS**

Technology Solutions



PC Problems, Repairs, Servicing, Setup No Job Too Small  
Wireless & Internet Setup Apple Macs Data Transfer  
New PC's, Laptops, Upgrades Tuition Safe PC Disposal  
Tablets, iPads, iPhone, Setup & Tuition Smart TV, Media box  
Wireless/Airprint printers Wireless/ Internet boosters

**\*\* For All Your PC & Technology Needs \*\***

**Guy Senior**

Phone: 0114 2352662 Mobile: 07890030453

Email: [guy@gwstech.co.uk](mailto:guy@gwstech.co.uk)

Web: [www.gwstech.co.uk](http://www.gwstech.co.uk)

GWS. 5 Conalan Avenue, Broadway, Sheffield S17 4PG



**Specialist Adult & Paediatric Neurological  
Physiotherapy, Occupational Therapy &  
Speech Therapy.**

- |   |   |
|---|---|
| <ul style="list-style-type: none"> <li>➤ Acquired Brain Injury</li> <li>➤ Spinal Cord Injury</li> <li>➤ Parkinsons Disease</li> <li>➤ Stroke</li> <li>➤ Epilepsy</li> <li>➤ Cerebral Palsy</li> <li>➤ Multiple Sclerosis</li> <li>➤ Fatigue Syndromes</li> <li>➤ Balance and Co-ordination Problems</li> <li>➤ Amputee Rehabilitation</li> <li>➤ Many Other Conditions</li> </ul> | <ul style="list-style-type: none"> <li>➤ Hydrotherapy</li> <li>➤ Electrical Stimulation</li> <li>➤ Gymnasium Work</li> <li>➤ Splinting</li> <li>➤ Saeko Assessments and Fittings</li> <li>➤ FES Bike Programs</li> <li>➤ Cognitive Testing</li> <li>➤ Carer Training</li> <li>➤ Equipment, Accommodation and Aids</li> <li>➤ Assessments</li> <li>➤ Elderly Rehabilitation</li> </ul> |
|---|---|

Clinic & home visits available - T : 0114 2353 150

E : [info@morerehab.com](mailto:info@morerehab.com) - W : [www.morerehab.com](http://www.morerehab.com)

design **etc.** your local full service  
design agency ...

corporate branding

stationery

brochures

advertising

web design

Call us on 0114 2622130

e [craig@designetcetera.co.uk](mailto:craig@designetcetera.co.uk) w [designetcetera.co.uk](http://designetcetera.co.uk)  
or call in at 61 Baslow Road, Totley Rise. S17 4DL

**Editor: Phil Harris**

Tel. 07956 858944 or email:  
[editor@totleyindependent.co.uk](mailto:editor@totleyindependent.co.uk)

**Advertising & Distribution:**

**John Perkinson**

Tel. 236 1601 or email:  
[advertising@totleyindependent.co.uk](mailto:advertising@totleyindependent.co.uk)

**Proof readers: Chris & Margaret Spencer**

Items for publication may be left at or sent to:  
2, Main Avenue, Totley, Sheffield, S17 4FG

[www.totleyindependent.co.uk](http://www.totleyindependent.co.uk)

**Printed by PREMIER PRINT DIRECT**

[www.premierprintgroup.co.uk](http://www.premierprintgroup.co.uk)

## TOTLEY INDEPENDENT for October/November

The next issue of the Totley Independent will be available from the usual distribution points on

**SATURDAY 3<sup>rd</sup> October**  
**COPY CLOSE DATE for this issue**  
**will be**  
**SATURDAY 12<sup>th</sup> September**

Published by Totley Independent CIC. Totley Independent is a registered Community Interest Company, number 07750166. We welcome letters about local affairs and will publish as many as possible. Items will not be considered that are submitted anonymously. The views expressed are not necessarily those of Editor or the editorial staff and must not be attributed to them.  
© Totley Independent 2015