

Totley Independent

Published continuously since 1977

www.totleyindependent.co.uk

August/September 2023

No. 423



Totley Hall today

Totley Hall: 400 years old!

Josie Dunsmore writes: Having recently researched the history of Totley Hall it was a special treat to be invited there to share in a celebration to mark its 400th year as one of the oldest houses in Totley. The gathering was the idea of Bette, the owner of the Hall's oldest surviving part of the present building. On June 20th Bette's family, friends, fellow residents and members of Totley History Group came together to enjoy a lovely buffet and conversation.

As part of the evening we all gathered on the front lawn and I was asked to say a few words to mark the occasion. I pointed out some of the original surviving 17th century features of the Hall, which was built in 1623 by George Newbould as a yeoman farmer's residence, and was very much smaller than what is seen today.

Two mullion windows with transoms, the original studded oak door topped by a lintel with George's initials and the date, and the vertical row of dressed

stones which mark the end wall of the first house are all original.

This old farmhouse remained untouched for 250 years until the latter years of the Victorian period, when it was greatly extended twice to become the house we see today. The first extension was made by John Unwin Wing, a respected local business man, who 'modernised' the Hall by ripping out two of the old mullion windows, replacing them with large bays, and who began to build on a new east wing. His residence was short-lived as, after only eighteen months, he was arrested for the embezzlement of £50,000 from his clients. It turned out that John had used some of the money to pay for giving Totley Hall a makeover.

I spoke unflatteringly of John as I had always looked on him as a 'baddie' in the Hall's story, but I now received a salutary lesson from our Hostess who pointed out that she saw John Wing as a hero as she loved her large light-giving Victorian window and (continued p.3)

UKRAINE HUMANITARIAN APPEAL

Apart from donating food, blankets and other essentials through local churches and other organisations, you can help by sending money to the Disasters Emergency Committee at any Post Office, or online at DEC.org.uk



Apple Landscapes and Paving

Established 19 years

Specialise in full garden makeovers.
Patis, paths, walls, turfing, fencing.

Check out our FB page.

07782167540

01246237505

S17 DECORATORS

PAINTING & WALLPAPERING



**TRUSTED LOCAL RESIDENT
WITH REFERENCES.
FULLY INSURED.
HIGH QUALITY PAINTING AND
DECORATING ACROSS SHEFFIELD
AND NORTH DERBYSHIRE.
35 YEARS EXPERIENCE.**



*"THANKS FOR ALWAYS GIVING US SUCH A PROFESSIONAL
FINISH WHEN YOU DECORATE FOR US."
MRS M. (MILLHOUSES)*

*"THANK YOU FOR AN AMAZING JOB.
WE KEEP RECOMMENDING YOU!"
MR & MRS D. (BRADWAY)*

*"WE HAVE COME TO CONSIDER YOU AS A FRIEND"
MR S. (DORE)*

*"YOUR DECORATING WORK IS SPOT ON - SO QUICK
AND EFFICIENT TOO! WE RELY ON YOU NOW."
MRS A. (DORE)*

*"YOU'VE DONE A MARVELLOUS JOB DECORATING
THE OUTSIDE OF OUR HOUSE"
MR & MRS W (DORE)*

CALL JULIAN TODAY!

07905 523499 OR 0114 2369664

JULIANCROOKES@GMAIL.COM
LONGFORD ROAD, BRADWAY, S17 4LP

FIND ME ON FACEBOOK 

Millthorpe Nursery

Still got gaps to fill?



We've all been busy in our gardens and now's the time to sit back and enjoy summer

But perhaps you still need that little something to finish it off? We can help you fill those holes and get your garden set for the rest of the year.

Millthorpe Lane, Holmesfield, S18 7SA



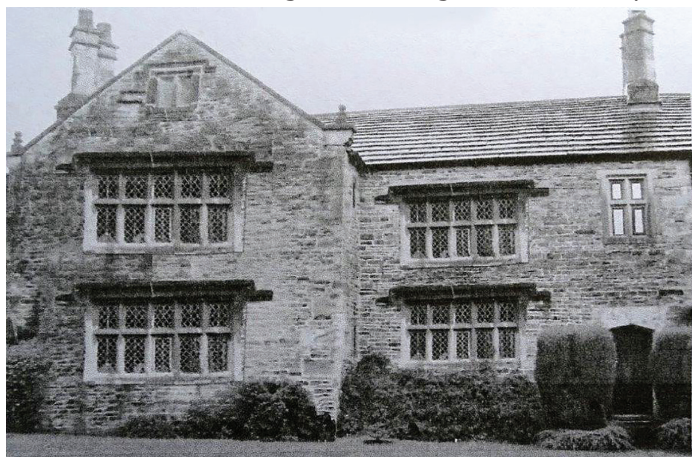
01142 890334



Open Tuesday - Sunday 10am - 4pm

Totley Hall: 400 years old! (from p.1)

was very grateful not to have to live in semi-darkness. I have to concede that she wasn't wrong. While it is good to keep rare and unusual buildings in their original state, if they are



An adapted photograph of the Hall, to give an idea of how it might have looked with its original windows

no longer fit for purpose, it is far better to adapt them to be useful and habitable than to let them rot away. This was a real threat to Totley Hall around 2000 when the Hall was left boarded up and derelict for two years before being rescued and renovated. The exterior of the present Victorian Hall was left unaltered while the interior has been sensitively restored as four apartments in the main building. This will hopefully ensure the future of this piece of our local history for years to come.

(For more about Totley Hall and its owners, see Totley History Group website and 'The Story of Totley Hall and its Owners' by Josie Dunsmore, on sale at Totley Library and Totley Shoe Repairs on Totley Rise)

Totley Show 2023

The Totley Show this year will be on Saturday 16 September. We are pleased to announce that the new Sheffield Lord Mayor, Colin Ross, who has been our local councillor for a number of years, will officially open the Show for us this year. We are pleased to welcome back a live band and a choir to entertain us again, with refreshments in the outside area at the back of the dining hall. We plan to spread the exhibits across the two rooms at Totley Primary School like last year. In 2022, we had nearly 100 more than the previous year and



The Balloon Teddy - a favourite from 2022

the largest number of entries while I have been Chair. Entries for the various classes can be dropped off in the morning from 8.45 am until 10.45 am. Please try and drop your entries off early as it is always busier in the last 30 minutes and registration has overrun previously. The entries will then be judged between 11.00 am and 1.00 pm.

The Show opens to the public at 1.30 pm. In the main hall, the Seven Hills Quintet will perform two sessions and the local Rock Choir will sing for us once again. We will have an auction again towards the end of the Show to sell off all donated entries.

As we are still spreading the exhibits over two rooms we will have all the charity stalls outside at the front of the school. Let us hope that the weather is fine on the day. If it is not then we have a contingency plan.

Elsewhere in this issue of the *Totley Independent* there is the Entry Form which can be used for your entries on the day. Please bring a form with you, already filled in as this speeds up the process on the Saturday morning. Entry forms can also be picked up from the usual places - Totley Library, the Ironing Parlour and Totley Rise Newsagents and Post Office - about four weeks before the Show.



Sue Bridgens receives Best in Show Cup, 2022

There will be a bouncy castle sponsored by Totley All Saints Church again, together with other entertainment for children.

We are always grateful to all the sponsors who are, along with Totley All Saints Church, Totley Rise Methodist Church, Hamnett Wealth Management, Staves Estate Agents and Omega at Abbeydale. The sponsorship money helps fund the costs of the Show.

The money on the day (primarily from the raffle) hopefully enables us to make a surplus which is then donated to local charities. All the prizes from the raffle are kindly donated by local businesses. We expect the value of the prizes donated to be in excess of £400 in value. A list of those local businesses is displayed on the back of the programme and we encourage you to support those in the usual way. Please thank those businesses for supporting the Show when you go into their premises.

We look forward to seeing you on Saturday 16 September, and if you have any questions about the Show, you can email me at the address below.

Mick Warwick, Totley Show Chair
totleyshowchair@hotmail.com

A1 Plumbing & Bathrooms
Complete Installation Specialist
Info@A1plumbingandbathrooms.co.uk
www.A1plumbingandbathrooms.co.uk
Tel - 07738 688 807

- * Plumbing Leaks, Bursts & Blockages
- * Taps, showers, Radiators, Etc
- * All Tiling And Plastering
- * Reliable, Fully Insured & Guaranteed
- * No Job Too Small, NVQ Qualified

25 Five Trees Ave, Dore, S17 3LW



PhysioFOCUS

at Totley Rise Dental Practice
85 Baslow Road,
Sheffield, S17 4DP



Physiotherapy treatment available for:

- Back and neck pain
- Sports injuries
- Sprains and strains
- Joint and muscle pain
- Arthritic pain
- Whiplash
- Repetitive strain injury
- Headaches

Appointments: 0114 2360333

Also available:

- Pilates classes
- Pilates 1-2-1
- Golf Fitness Screening
(as used by consultants to UK,
European and Australian PGAs)

For more information please call:

Emer on: 07792 422909

Rachel on: 07956 908454

Tristan Swain

Garden Services and Maintenance
Established 1984

Unit C4 Sheaf Bank Business Park
Prospect Road Heeley
Sheffield S2 3EN
Tel/Fax: 0114 255 4689
Mobile: 07831 802 539
Email: tristan@tristanswain.co.uk



www.tristanswain.co.uk Public Liability Insurance Waste Transfer Licence

Mark and Sally Fletcher invite you to

The Grouse Inn Longshaw

Sheffield S11 7TZ

Meal times: Mondays 12.00 to 2.30pm

*Tuesdays to Fridays 12.00 to 2.30 pm
and 6.30pm to 9.30pm*

*Saturdays 12.00 to 3.00pm and 6.30pm to 9.00 pm
(drinks – open all day)*

Sundays 12.00 to 9.00pm

Phone 01433 630 423

BRADWAY INSTALLATIONS

Kitchens, Bathrooms and everything in between

Complete Kitchens Installation or supply & installation

Kitchen Refits Replacement worktops/sink/hob etc
Worktop/cabinet repairs

Bathrooms - Cloakrooms - Domestic plumbing

Tiling - Laminate/Vinyl flooring

All work undertaken is fully insured and guaranteed

Ring Peter - 0114 236 5995

Mobile - 07766 411355



Got a computer?

Having Problems?

Is it running slow? Stops responding?
Having problems running the latest games or
applications? Broadband / WiFi problems?

Give me a call!

I am available for home visits at any time
including evenings and weekends. I can also
suggest upgrades to improve performance, or
even build you a system to your specific
requirements.

Phone: 0114 247 2619

Mobile: 078 1746 4703

Email:

service@timbrownplus.co.uk

Tim Brown

Building,
Installation,
Upgrading and
Troubleshooting

Computer
Systems

Over 30 years'
Professional
Experience

John Collins

Cabinetmaker

Fine furniture, antique furniture restoration, fitted
wardrobes, alcove units

0114 2585355

www.cabinetmakercollins.com

John Heath & Sons

AN INDEPENDENT FAMILY FUNERAL BUSINESS

Sometime.....

You will probably have the responsibility of making funeral
arrangements. No one looks forward to this responsibility, but the death of a
family member or friend brings with it an obligation that must be met. There
are people who can help you meet this responsibility. We have been helping
people combine the different aspects of the funeral into a meaningful service for
over 125 years.

Please Call Day Or Night

(0114) 272 2222

Head Office - Earsham Street

Also at Meadowhead, Ecclesall Rd,
Crookes and Stanington

www.johnheath.co.uk



Mickley Coal Company: Correction

It has been pointed out to us that there were several inaccuracies in our article on the Mickley Coal Company in the last issue.

On page 6, an 'industrial style red brick building' was mentioned. In fact, this building was owned by the Hall Brothers, who were engineers making anchor spikes for the Ministry of Defence. This business, and the site, were sold many years later to Dengal and Barker, who traded under the name Standall Tools. They built a new machine-shop and extended the factory to produce pneumatic tool bits.

In 2000 this business was sold, and the new owner made significant investments in new machinery and working practices in order to develop world markets. Within a few years, the company was supplying 80% of its production for export.

Unfortunately, in 2006, the company began to receive complaints about noise levels, and had to reduce its working hours from 24 hours a day, seven days a week, to a five-day week. At the same time weight restrictions were introduced on the roads surrounding the site, which meant that large vehicles could no longer come to the site. Naturally, this had a significant effect on the business and so it was decided in 2011 to transfer the Standall Tools operation to another site which is still in operation today.

We apologise for these errors which we are happy to correct.

has not yet found an alternative venue and it may be that we



The whole cast at the end of our recent HMS Pinafore

do a concert version of *Iolanthe*? (possibly staged, ie some action and costumes) to put on in other venues. It's up in the air for now so watch this space.

In the mean time I hope you have a good summer and don't succumb to a Baker's Cyst!

Derek Habberjam

Dore and Totley United Reformed Church

Flanders and Swann afternoon

On Sunday September 24th at 3pm Simon Copley and Jonathan Lazell will be entertaining us with music and words from Flanders and Swann. This will be followed by refreshments with cream teas and cakes and more entertainment. Places need to be reserved in advance with a suggested donation of £5 on the door (£3 for children). Please book ahead by contacting Margaret Barron on 0114 2311831 or Elaine Ferguson on 07929 720977.

Grand jigsaw sale

After the success of last year's sale we are now collecting brand new or very good quality complete jigsaw puzzles for our next sale on October 14th. Phone or text Elaine on 07929 720977 if you have jigsaws to donate.

All our events support our 2023 charity, SHARE (Sheffield Health Action Resource for Ethiopia). If you'd like to hear more about the work of SHARE, Cariad will be speaking at our morning service on 20th August.

Harvest celebrations

Looking ahead to October our Harvest celebration will be informal cafe style on October 8th at 10.30 am. We will be collecting non-perishable goods for the Cathedral Archer Project.

Elaine Ferguson



Friends of Gillfield Wood

Diary for August and September 2023

September 9 An Evening Bat Walk in the wood with Dave Gash. Meet at the end of Totley Hall Lane at a time to be announced on the website.

September 16 FOGW stall at Totley Show, Totley Primary School, from 1.30 to 3.30pm

October 2 Members' Night in Totley Library, Baslow Road, 7.30pm. Committee members Andy, Stuart and Paul will present a 30 minute illustrated talk and take questions from the audience on each topic. Please contact us or check the website for further details nearer the time.

www.friendsofgillfieldwood.com
email: fogwsecretary@gmail.com

Dore Gilbert & Sullivan Society

That's the first of three concerts done and dusted. It was our usual summer concert at the start of Dore Festival Week on July 1st in Dore Methodist Church to a very appreciative audience (including the off-duty Lord Mayor). Some of the music, although lovely, was not well known even though it was by Rodgers and Hammerstein or Sullivan himself. I especially liked the drinking song *The Gay Hussar* from a show called *The Chieftain* with music by Sullivan which Alex Hayward-Browne sang brilliantly, and *It's A Lovely Day For A Wedding* from *Allegro* by Rodgers and Hammerstein. There was, of course lots of well known music such as *Miss Saigon*, *Joseph and his Technicolour Dreamcoat*, and *My Fair Lady*, in fact something for everyone. We are repeating this programme at Whittington Moor Methodist Church later in July and in Bolsover in October.

My poor old other half has had an extremely painful Baker's Cyst that has lasted many weeks and has finally improved. We were planning to go away for a holiday in June but went nowhere apart from the doctors! I'd never heard of it until Ann got one and then I found three other people I knew had had one. Now that she can walk again it's my turn as I'm waiting for a cataract operation appointment so I still don't know what we are going to do for a holiday.

We believe that the Montgomery Theatre is now closing for major work including the installation of a lift, but do not think that it will be available for our show next year. The committee



Beth Storeham
— TILING —

07594863965
bethanstoreham@gmail.com

Call now for a no obligation quote

- Kitchens
- Splashbacks
- Bathrooms
- Floors
- Fire surrounds
- Repairs

Proudly using more sustainable materials

Our minor service helps stop little parts of your Volkswagen becoming big problems.



Minor service

£129

Even Volkswagens need a service every now and again. The recommended service interval is every 12 months or 10,000 miles (whichever comes first). We only use Volkswagen Genuine Parts® which come with a 24 month warranty as standard.

Why not combine your minor service with an MOT? Prices start from just £178 for models up to and including 2.0 litre engines.

Price includes Genuine Volkswagen oil filter, oil change with replacement sump plug or washer, screen wash top up, vehicle diagnostic check, vehicle check list including lights, instruments, bodywork, glass, locks, battery, coolant levels, drive belts, braking system, steering, hoses, drive shafts and exhaust system, service book stamp or Digital Service Schedule entry and road test. All prices include parts, fluids (if applicable), VAT and fitting. Offer limited to 4 cylinder engines up to 2.0 litres, Petrol, petrol hybrid and Diesel. Available for a limited time only. Terms and Conditions apply. For details call 0114 2446589. Service operations can vary between vehicles depending on specification and factory fitted equipment. The word "Volkswagen" and the phrase "Volkswagen Genuine Parts®" are registered trade marks of Volkswagen Group UK Ltd and Volkswagen AG. Autohaus Dolby Ltd is an independent Volkswagen specialist and uses the terms associated with Volkswagen Group UK purely as descriptive words and implies no direct association with Volkswagen AG, Volkswagen Group UK Ltd or its franchisees.

Autohaus Dolby Volkswagen Service

0114 2446589
Barleywood Rd,
S9 5FJ
autohausdolby.co.uk

Will Remembrance Day be Forgotten in Totley?

Many Totley residents are up in arms after Sheffield City Council declined the request from members of Totley All Saints Church for the usual short road closure to enable the annual Act of Remembrance at the War Memorial on Remembrance Sunday.

As far back as the 1960s, the Act of Remembrance at the War Memorial has been a cherished and integral part of Totley's community life. Last year, over 200 people gathered to honour and remember the sacrifices of local heroes who laid down their lives during wars.



The Remembrance Day procession, 2022

Community groups such as the British Legion, Scouts, Brownies, Guides, Totley All Saints School, Totley Primary School, Totley History Society, All Saints Totley Church, and even veterans of the police force traditionally come together to participate in this solemn occasion.

In previous years, Sheffield City Council has granted permission to close the short stretch of Baslow Road near

the War Memorial, allowing for a serene and respectful remembrance. However, this year, the council has rejected the request for road closure as there had been some complaints last year.

Jonny Evans, one of the Churchwarden at All Saints Church, said "We were sorry to hear that there were complaints last year. Our understanding is that much of the difficulty last year was around the closure of the junction where Hillfoot Road and Totley Hall Lane meet Baslow Road, which meant that traffic was temporarily held up from all three roads."

The church has proposed a new plan to minimise disruption:

- Close Baslow Road alone. and leave open the junctions of Hillfoot Road and Totley Hall Lane;
- Limit the road closure to a strict 30-minute duration;
- Publicise the event, and the road closure, to local residents in advance of the event;
- Assign personnel wearing high-visibility jackets to oversee the road closure endpoints.

However, the Council has put forward a plan for either a temporary one-lane road closure with a two-way traffic light control or a full road closure, to be provided by a private traffic control company at a cost of between £1800 and £2000 – with the local community footing the bill.

All Saints Church has been unable to find any other organisations or churches across the region being subjected to similar financial demands for remembrance road closures. Many have expressed their deep disappointment with the council's decision. "Remembrance Day is a key moment each year for our country. A time of pausing and remembering, honouring and giving thanks" said Ben Tanner, Vicar of All Saints. "This move sadly demonstrates a lack of respect for our community, our history, and the brave individuals we honour each year."

The church has written to local councillors asking for support and are hopeful that this question will be able to be resolved at an upcoming meeting. If this is not the case then the church will be looking to get a petition going to support this important and historic event in our community life.

A Celebration of the Music of

The BEATLES

An evening of live music from local bands

Redback Cellar V

with special guests

**Rony Robinson and
Sally Goldsmith**

Saturday 30 September

7.30 pm

**Christ Church Community Centre,
Townhead Road, Dore, S17 3GA**

Tickets £10

Available from Dore Club, Townhead Road, Dore, and
Transport 17, 172 Baslow Road, Totley

Please note: tickets must be bought in advance.

All proceeds to local charity Transport 17

Bring your own drinks!



THE HARDY PLANT SOCIETY

South Pennine Group

Web site: southpenninehps.webador.co.uk

[@HPSsouthpennine](https://www.facebook.com/HPSsouthpennine) [south_pennine_hps](https://www.instagram.com/south_pennine_hps)

AUTUMN PLANT SALE 2023



Saturday 16 September, 1100 -1500

Sheffield Botanical Gardens

**Wide selection of hardy and other plants
grown by our expert members**

Everyone welcome - Free admission

CASH AND CARD PAYMENTS

**TO HELP US REDUCE THE USE OF PLASTICS PLEASE
BRING YOUR OWN BAGS TO TAKE YOUR PLANTS HOME**



Update from Olivia Blake MP

I hope this update finds you well and enjoying summer in Sheffield. At the time of writing Parliament is about to close for August and I am looking forward to spending more time in Hallam with my family and dogs, Willow and Arthur. I am also looking forward to attending a number of community events across our constituency over the next few

months. If there is a community event this summer you would like me to attend, please do get in touch: olivia.blake.mp@parliament.uk.

Last month I was selected to sit on the Energy Bill Committee. This is a committee of cross-party MPs selected to scrutinise the Government's proposed Energy Bill before it returns to the House of Commons to be debated and voted on.

We have long called for the Government to bring forward the first Energy Bill, so I welcome its arrival. But given the urgency of the cost of living and climate crises we need an all-out sprint for zero carbon power, a proper plan to spread the benefits from this cheap power to lower and middle-income families, and an industrial policy to create good quality, green jobs.

This Bill lacks the ambition required to deliver on any of these. Over the last month I have challenged the Government on several issues during debates, including ending the use of fossil fuels, stepping up home insulation, and ending the ban on onshore wind turbines. I also tabled a number of amendments to the Bill, including an amendment calling for the UK to withdraw from the Energy Charter Treaty, which allows companies to sue governments for taking vital climate action which might hit their profits.

I also tabled an amendment calling for more Government support for community renewable energy projects. Local renewable energy will play an important part in our transition to net-zero, providing good quality jobs and economic growth to our local communities – yet the Government has continually failed to support these projects. You can read more about my work on this committee on my website: oliviablake.org.uk

It was an absolute pleasure to visit Ughill Farm and find out more about Sheffield and Rotherham Wildlife Trust's work creating a new haven for nature in Hallam. We saw hares, curlews, lapwings, skylarks and swifts! It was also great to hear about their campaigns and what more I can do to champion nature in Parliament.

I am continuing the campaign for a Climate and Ecology Bill. Nature is our best ally in the fight against climate change, and the Climate and Ecology Bill is the critical framework we need to halt and reverse nature's decline before it's too late. I am working with the Green Party's Caroline Lucas and the Liberal Democrat's Wera Hobhouse to push the Government to adopt the Bill. We wrote a joint piece for Politics Home about the importance of the Bill for World Environment Day.

I spoke during the debate on Rosebank oilfield. The day after the 4th anniversary of the UK setting NetZero in law, and on the morning of the damning Climate Change Committee report, the Government still refused to rule out opening the new oilfield. Rosebank won't reduce bills or ensure energy security. It will only speed up climate catastrophe.

I also joined steel workers, including workers from Sheffield, whilst they marched on Parliament to call on the Government to take action to save the steel industry. Domestic steel is vital to reaching net zero, but all we have seen from this Government is a lack of ambition, vision, and political will. I spoke to steel workers about what we need to see from the Government in order to save our steel industry.

Two years ago, after the hard work of campaigners, the Government committed to vital reforms to miscarriage care during my debate in Parliament, including recording every

miscarriage, 24/7 support available for those experiencing miscarriage and an end to the three miscarriage rule, whereby women only receive support and tests after their third consecutive miscarriage.

At the time, I didn't think it would take this long, or be this hard, but finally it looks like change is coming. Now new draft RCOG guidance, which has been consulted on, will hopefully mean women can access care after their first miscarriage! And at the time of writing I have just met with the Minister who assured me that the Pregnancy Loss Review, and our demands, would finally be announced within the next month. This would be a huge win for the 1 in 5 women who will experience a miscarriage. I will keep you updated!

Finally I was honoured to be re-elected as Chair of the All-Party Parliamentary Group on Special Educational Needs and Disabilities. I am very much looking forward to continuing to work across party lines to champion this important issue.

Thank you for reading my update. Please get in touch if there is an issue you are facing, or campaign you would like me to join.

Olivia Blake - MP for Sheffield Hallam
olivia.blake.mp@parliament.uk
<https://www.oliviablake.org.uk/>

Regular events and meetings at Totley Library

Monday:

French lessons for children following the award winning course material from La Jolie Ronde. After-school classes are available for children in the children's library
3.40pm – Y5/Y6; 4.10pm – Y3/Y4; 4.40pm – Y1/Y2
5.30pm – Y4/Y5

Contact Joanna on 07854 148809 or email speaquesheffield@gmail.com to find out more about local availability for French language classes.

Friends of Gillfield Wood, occasional Mondays, 7.30pm onwards. Talks on local nature and conservation. See posters, the FoGW article in this issue, or www.friendsofgillfieldwood.com

Councillors' Surgery, 2nd Monday of the month, 6–7pm

Tuesday:

Baby Time 1.30–2.15pm (term times only). Come along to meet other parents/carers and babies. We sing simple songs, have fun and allow time to chat.

Poetry Group, first Tuesday in month, 7.00 – 9.00pm. *Please note that this group cannot accept new members at present.*

Friends of Dore and Totley Station Occasional Tuesdays, 7.30pm. See www.FODATS.net

Wednesday:

Coffee Morning, 10.30 – 12noon

Story Time for toddlers and pre-school children from 10am – 11.30am (except school holidays). Children can take part in weekly themed craft activities, sing songs and listen to a story. £1 donation per child greatly appreciated.

Health Walks, 10.30am, meet at Library. Contact Step Out Sheffield on 07505 639524 or email stepoutsheffield@gmail.com

Totley History Group, usually last Wednesday of the month, 7.30. Talks on matters of historical interest. Check posters, the *Totley Independent Diary*, or www.totleyhistorygroup.org.uk

Yoga sessions 7.00 – 8.30pm, Wednesdays (except the last Wednesday of the month). For more details call Ann Zielonka on 0114 2361585 or 07929 736966. Beginners welcome. You are advised to call Ann to check that the sessions are taking place.

Thursday:

Thursday Morning Natter 10.30 – 11.30. Hot drinks and good company - for people aged 60 or over.

Chair Aerobics with Kay 12noon for 45–60 minutes. An Age UK and People Keeping Well weekly exercise class. £3 per week - no need to pre-book, just turn up.

Reading Club 2 meets in the library on the third Thursday of each month between 1.30 and 3pm. If you are interested in coming along please email Dawn Rich at dawn@ilmd.biz

Saturday:

Regular second-hand book sales. Check CRIC website: <http://www.totleycric.org.uk/>

Snakes and Ladders

I think it's safe to say that whether you're buying or renting, the property game is like snakes and ladders. Right now, it's a real rollercoaster of interest rates going up, rents going up and property prices going both up and down. You really don't know what's round the next corner. Are you going to be suddenly turned upside down or will you be screaming during a rapid descent into nowhere? I well remember the thrills of our rollercoaster ride of starting a repayment mortgage in June 1981 at an interest rate of 12½%. (We narrowly missed the record 17% of November 1979.) Our rate went up to 15% the following year, back down to about 10% and back up to 15% in 1989. The average house price in 1981 was £21,507 and 20 years before that was £2,400. Between 1995 and 2022, the average mortgage rate was 5.62%. The average house price in England by 2022 was £315,000, and the UK average was £294,000. It's still painful now for people with a mortgage. At the time of writing the interest rate is around either side of 6%.

Rates of renting vary considerably across Europe. Currently, in England 19% of homes are privately rented. Cross over to France where the average is 40%, 50% in Germany and 53% in Switzerland. The rate in Spain is 23%, 25% in Italy and 30% in Ireland. Over the Atlantic, the average figure is 36% in the USA and 33% in Canada. Wherever you live, the trend of rates and rents seems to be upwards. This comes as no surprise to the rollercoaster riders.



The term "mortgage" comes from 13th century French and began to be used regularly in Britain from the 15th century. The first building society in Britain started in the 18th century and was joined by many more in the 19th. Thereafter, the market share of lending for property has fluctuated considerably between banks, building societies and other lenders. In the mid-19th century, a house would cost around eleven times a person's average earnings. In 1910, it was four times. For example, that year an Edwardian stone-built

four-bedroom semi-detached house in Chatsworth Road sold for £150. By the time of the Great War, it was even easier as house prices were just over twice average earnings. By 2022, they were about nine times average earnings.

Towards the end of the Great War, Liberal Prime Minister Lloyd George spoke of "Habitations fit for the heroes who have won the war." This gave rise to the abbreviated saying "Homes fit for Heroes". The Cabinet of the time wanted wholesale demolition of slum housing and development of good quality housing stock. However, it didn't quite come about due to a shortage of money, too few men skilled in construction trades and a dearth of building materials. In 1918, architect and Paymaster General Sir John Tudor Walters MP wrote a report about housing. Using his expertise, he suggested five designs for new homes of different sizes that made best use of the limited materials available at the time. However, the intended level of progress was hampered by the recession in 1921, and it wasn't until later in the decade that the situation improved.

By 1928, the range of housing being advertised for sale around Sheffield was between £375 and £2,000. New semi-detached homes in the Dore, Totley and Ecclesall areas were being advertised at prices between £650 and £750. A freehold three-bedroom semi-detached bungalow in Totley Rise was advertised for £875 with another at Heatherfield for the same price. A freehold modern villa with a large garden and garage in King Ecgbert Road was a snip at £1,600. A freehold four-bedroom double-fronted stone villa in Dore was yours for £1,300. A detached villa in Totley with eight rooms, garden, garage and greenhouse was £800.

There were bargains to be had to furnish these dwellings. Dining room suites and sideboards were upwards from 12 guineas each. Bedroom suites were about £20 and above, and a black and brass bedstead in the region of £4 or more. Your linoleum floors could be covered with rugs starting at 7/- (35p) each.

Fast forward to 1950 where the average price of a new house was £1,891 for those on an average salary of between £7 and £10 a week. The Chatsworth Road house mentioned earlier sold again for £750. Ten years later the average price of a new house was £2,530. In June 1961 when the mortgage interest rate was 6%, the family Ford Anglia car would be £600 with petrol at 4/11d (25p) a gallon. Indoors, your 17-inch TV was £50, the electric cooker £62 and the new fridge was £50. The rollercoaster started heading upwards, as by 1970 the UK average house price was £4,057, £20,268 by 1980 and £57,901 by 1990. In a conference speech in 1975, Margaret Thatcher had re-used the 1920 Tory idea of creating a "property-owning democracy". "Right to Buy" for local authority tenants came in during 1980. By the Millennium, the average house price in England was £83,500 and in London it was £133,000. The rollercoaster has kept on rolling ever since, and the best advice is probably something like "keep belted in, grit your teeth and hang on tight".

Mike Peart

Piano/Keyboard~Guitar~Singing~Flute
Theory & GCSE Coaching

MUSIC TUITION

SOUTH - WEST SHEFFIELD

Experienced & enthusiastic tutors

All styles, all ages - beginners welcome

Exam work or just for fun!

Please contact:

KARIN FINNEY

0114 237 4901 ~ 07854 747153

notetokarin@hotmail.com

TopsforJeans

OPEN Monday - Saturday

Super soft knitwear, beautiful tops and so much more.

Call in or shop from the comfort of your own home on our website.

Catch up with the latest news on our Facebook site.



www.topsforjeans.co.uk

164 Baslow Road, Totley. S17 4DR

What's on at Totley Library



Summer Reading Challenge

Greetings from Totley CRIC! We are all enjoying the summer sunshine as we are preparing for the Summer Reading Challenge 2023. This started on Saturday July 15th and runs for 8 weeks until Saturday 9th September. Last year it was hugely successful with many new children joining the challenge. It is



free and open to all children from birth to 11 years old. Children need a library card and can then register for the challenge. Each time they borrow a book they get a sticker. When they have read 6 books they get a certificate and a medal. The theme this year is keeping fit and active over the school holidays. We have purchased books that support this scheme so please come and join in!

Did you know? It costs about £32,500 a year to keep Totley Library open.

We receive a grant from the council of around £17,700 a year and the shortfall is met by fund raising. Last year we raised over £16,000 from events, grant applications, and book/plant sales. The Library Lottery is a regular source of income and is much valued! We have had to replace the heating and refurbish the kitchen area this year with significant expense.

Totley Library is one of the most well-used volunteer libraries in Sheffield. Last year we added 1,725 books to our shelves. We provide meeting places for 12 community groups. We have over 100 volunteers involved in a range of tasks - book assistants, front desk, cinema, events, book sales, garden, IT, children's activities, building management, baking and more! Your ongoing support is very much appreciated. You can help by continuing to use the library, supporting our fundraising events or signing up for the lottery (more information on the website). If you are interested in volunteering please come and visit us to find out more- you will be most welcome!

Current Opening Hours

Mondays 1pm - 7pm
Tuesdays and Wednesdays 10am - 5pm
Fridays and Saturdays 10am - 1pm

Totley Library Cinema

Our cinema programme at Totley Library is available for booking in person or by calling 0114 236 3971. Refreshments will be served at all these films. Raffle tickets: £3 per adult and £1.50 per child. Thursday matinee films are free for over-65s.

For details of films to be shown, please see posters in the library or visit our website at www.totleycric.org.uk

Overdue books

There are no fines on items that are returned late. Library users are still encouraged to return or renew their library

books on time. Lost and damaged items are charged at replacement value.

Please have a look at home for any overdue books and return to the library as soon as possible. This will help ensure all our library users are able to enjoy the newest titles.

You can make a book recommendation online at <http://www.totleycric.org.uk/suggest-a-new-book/> or email us at book-purchasing@totleycric.org.uk

Library Lottery Winners

First-prize winner in the May draw was Elizabeth Derbyshire, and Geraldine Slinn won second prize. In the June draw, first prize was won by Pauline Perkinson, and second prize by Robert Jones.

Dyslexia Friendly Books

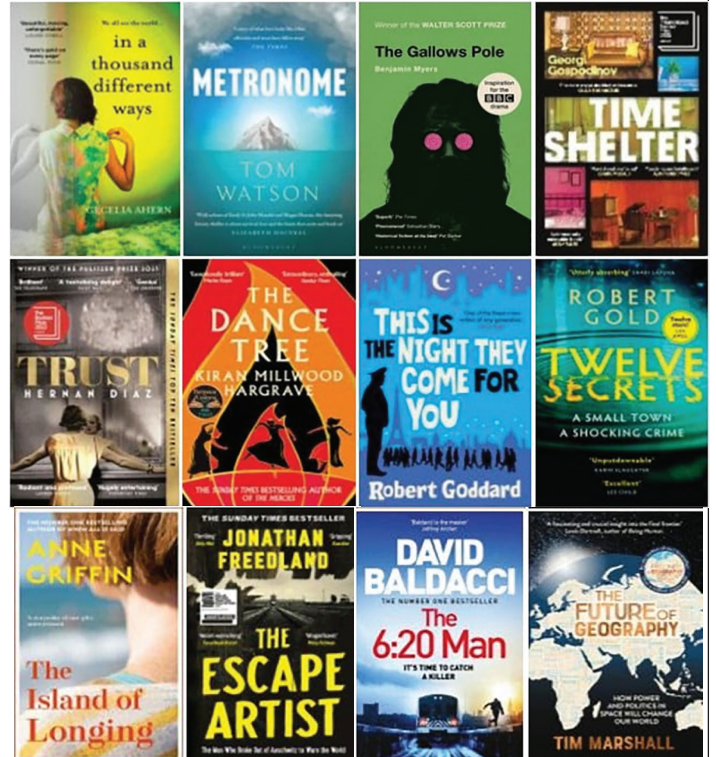
Our new dyslexia friendly books have now been integrated into the Children's general fiction and nonfiction. Laminated lists detailing each dyslexia friendly book and where to find it are hanging by the children's fiction shelves. Please ask a library volunteer if you need help to find a book.

Summer Holiday Activities for Children - 'Make and Create' Sessions

Each Wednesday and Friday morning, from 10am to 12.15pm during the summer holidays, there will be free craft materials available for children to use to make and create.

New Book Additions

We have plenty of lovely adult titles and children's books from well-known authors, and we have recently added new crime



and thriller titles to our Large Print shelves. Don't forget - you can make a book recommendation online at our website or email us.

Very Helpful Licensed Waste Removal

- We offer single item or part house clearance services
- We collect for disposal/recycle sheds, garage or outbuilding contents
- We also do single item removals or collections
- We don't collect beds or sofas

07720 845 326

Text now for more details!

Karl Nuttall-Allsop 23 South Street North S43 2AA



recycle

E mail veryhelpfulman@yahoo.com

recycle



Walking the Famous Talking Dogs

Two dogs meet for the first time

BLUE I'm Blue.

JACK I'm Jack.

BLUE Have we met before?

JACK Nearly. I used to be you.

HEADEATER Only use asterisks (*****) when you can't make of sense of yourself, or you want to give my readers a rest. And no silliness please in the *Totley Independent* (independent since 1977). And if you want to appear in this edition you have only 509 words starting — now!

JACK I used to be Sally and Rony's dog and I used to go on long walks like you do, Blue.

BLUE But I only go on short walks Jack, because, paradoxically, we greyhounds sleep for hours between carrots and walks.

JACK I walk in heaven now.

BLUE Can dogs go to heaven?

JACK I'm not really allowed to say. But let's say dogs can go to Devon where Rony has six grandchildren who make him cry. He says that that is heaven for him.

HEAD EATER No crying in the *Totley Independent*.

BLUE When I raced I was always Always a Blue but now I am only Blue.

JACK I was always only a Jack.

BLUE Change your name! I did.

JACK I will. Instead of being Jack, I'm now going to be Jaques like in Shakespeare!

All the world's a stage and —

HEAD EATER No Shakespeare in the *Independent*. All that doublet and hose has no place in the New Totley. And you have already used 141 of my precious words.

BLUE Where did you come from Jaques?

JAQUES Totley. Where do you come from Blue?

BLUE Egypt.

RONY I'm Rony and at All Saints we called Egypt Egg Wiped. And Old Smellor used —

JAQUES Ignore him Blue. He's got stuck in 1947 again.

JAQUES Why do you come from Egypt, Blue?

BLUE Because our god is called Atrum. And he had a greyhound called Ennead and —

HEAD EATER Stop! You have both simply been Doggling on your laptop to impress my readers, and they don't like being impressed.

JAQUES Why are you a greyhound called Blue when you are in black and white, Blue?

BLUE I live in Totley so I shortened my name so the residents here might remember me even when they can't remember what day it is. Ipso facto of course.

JAQUES I was in Latin sometimes, being canis familiaris.

BLUE I can be in Shakespeare and say -

once more into my breeches *Henry 5 3*

And I can be out of my slips as well.

JAQUES You're supposed to have retired.

BLUE You're supposed to be dead.

JAQUES I can still be loved.

BLUE Not as much as me.

SALLY I am Sally and I have entered this scene to say that Love doesn't get measured like sweets at Mrs Spring's. The more Love the better.

VICAR Hello Sally! God is love —

SALLY Thank you. But I must explain to you how patriarchal and antifeminist the C of E can be and —

JAQUES People used to call me love in Greenoak when I went sniffing. Before I went to heaven.

BLUE Can dogs go to Heaven, Vicar?

VICAR I will read you *Luke 26 v 22*.

HEAD EATER No space, You've only got 45 words to go.

BLUE What's it like in Heaven Vicar?

VICAR God only knows.

JAQUES We dogs in Heaven get free biscuits and we are allowed to say God backwards. And we can listen all day to Bach.

VICAR But don't forget *1 Kings 1* where dogs are Jeroboam's enemy.

HEAD EATER Stop right there. You've run out of words.

BLUE Look out! It's the Head Eater!

JAQUES He looks at the end of his tether!

HEAD EATER I am at the ends of both my tethers and so are you.

JAQUES & BLUE It's never the end of anyone —as long as they are still remembered .

HEAD EATER Isn't that that Frenchman atheist Jean Paul Sartre ?

JAQUES & BLUE We think he was also the one who said l'enfer c'est les autres.

HEAD EATER He's not saying it here. We've had far too much foreign language today. And most of it is wrong. So as soon as I can find my delete button I'm going to...Aaaaaaahhhhhggggg! I've deleted myself.

BLUE Nice to meet you Jaques,

JAQUES Nice to have met you Blue.

BLUE See you again?

JAQUES Sort of.

THE SORT OF END

by Blue and Jaques, with help from Rony Robinson.

Recently Spotted!

On a main road in the area:



How convenient!



Say goodbye to pain this Winter and make an appointment with **Activ Physiotherapy in Totley**

We can help you with:

- ▶ Back & neck pain
- ▶ Headaches
- ▶ Joint & muscle pain
- ▶ Post-surgery rehab
- ▶ Sports injuries & massage
- ▶ Women's health issues
- ▶ Acupuncture
- ▶ Home visits and much more...



Book an appointment on 0114 235 2727
 88 Baslow Road, Totley, Sheffield S17 4DQ
 Open Monday – Saturday

Est 1971
R.S. HEATING & BUILDING CO.

Heating division

Experienced installers of all types of domestic boilers. Authorised installers of Vaillant, Worcester Bosch and Glow Worm boilers. Full after sales service dept.

Plumbing division

Bathrooms, showers, wet rooms, individually designed washing rooms for the disadvantage a speciality. A complete service, from design to even laying a new floor surface

Building division

Kitchens, complete House renovations including general building, joinery, plastering, tiling, electrical, decorating etc.

88 Sunnyvale Road, Sheffield S17 4FB
 Tel: 0114 2364421
 enquires@rshb.co.uk
 www.rshb.co.uk



Sheaf Skips
 Your Local Skip Hire Company

0114 258 3279
 www.sheafskips.co.uk



Same Day Service Available
Professional and Efficient
Fast, Reliable & Affordable
Mini, Midi & Builders
Size Skips Available
We welcome Business Account Customers



WE SELL SMOKELESS COAL/FUEL LOGS - KINDLING PACKS FIRELIGHTERS
OPEN 6 DAYS A WEEK

FREE DELIVERY ON BULK BUYS
ASK FOR DETAILS

Unit 5 Heeley Arches, Oak Street, Heeley, Sheffield S8 9UB

Totley Deli

Where quality and friendliness count

Look out for our daily specials or join us for breakfast.

Why not come in and sample our wide range of hot & cold sandwiches and home made produce. Freshly made daily to eat in or take away. All produced from locally sourced suppliers.

- Fresh Roses bread delivered daily & available to order
- Selection of cooked meats sliced to your specification
- Superb selection of fine cheeses, preserves & pickles
- Moss Valley bacon & sausage
- Longley Farm dairy products
- Wateralls pork pies
- Freshly baked pastries

All available to take away.

Homemade scones, lasagne & quiches



If you are having a party or family gathering why not let us take the strain and provide a buffet for you.



51-53 Baslow Road, Totley Rise. S17 4DL.
Call 0114 2364238

Totley Wildflowers – update on the new meadows

The new wildflower meadows at Totley Grange and St John's church are now established. You may have noticed the ox-eye daisies, yellow rattle and fox-and-cubs flourishing there last month. The more eagle-eyed will have spotted a few cowslips and cuckoo flowers earlier in the Spring, and even a bit of red campion. There's also an awful lot of long grass!

The meadows have made a very good start, and we are hoping that in time the flowers will come to dominate and the grasses reduce somewhat. Yellow rattle in particular is very good for preventing the grass becoming dominant, and as that sets seed we hope that more varieties of wildflower will appear in the meadows and insect populations increase.



The grass will be mown in the autumn, after the flowers have had a chance to set seed. The cuttings will be removed to prevent the ground becoming too fertile – this favours grass over wildflowers. The wildflower group is also planning to sow more seed after the cut. If anyone would like to help out or if you happen to have some perennial wildflower seed to spare, you can contact us on totleywildflowers@gmail.com

By far the best wildflower meadow in Totley this year has been the area by the picnic tables at the top of Gillfield Wood, near the bus terminus. This Summer has seen a variety of native wildflowers blossoming there, attracting insects and butterflies galore. The meadow was started a few years ago, and it's a good example of how it takes a while for them to fully develop, but it's well worth the effort in the end. Careful management over the next few years will see the Totley Grange and church meadows get better every year and reward us with equally lovely displays well into the future.

*Isabella Stone
Totley Wildflower Group*

Traffic News

Speeding Offence Data for the last 6 months

I have received statistics for speeding offences captured by the speed camera van at two sites in our area - Abbeydale Road South near Bushey Wood Road, and Baslow Road near Marstone Crescent, Totley.

Between 1st January and 30th June 2023 there have been 401 Notices of Intended Prosecution issued in the Bradway, Dore and Totley area. Of this total, 108 offences were committed by offenders from the S17 postcode area, which equates to 27%.

Direct Trains to Manchester Airport

During our work in Beauchief gardens, the issue of a direct train to Manchester Airport was raised on a number of occasions. By good fortune, I met a gentleman from Network Rail, who sent me chapter and verse on why the service was stopped. Basically, it interfered with the running and timing of other trains in the area, such as freight trains leaving a container depot. However, he suggested that a campaign might be useful, and sent the following references:-

- £72 million boost for train services in Manchester and the north - GOV.UK (www.gov.uk)
- Long-held plans for two new Piccadilly platforms to solve Manchester's rail chaos have been pulled - Manchester Evening News

This information might attract someone to get a campaign running!

Totley, the gateway to pothole City

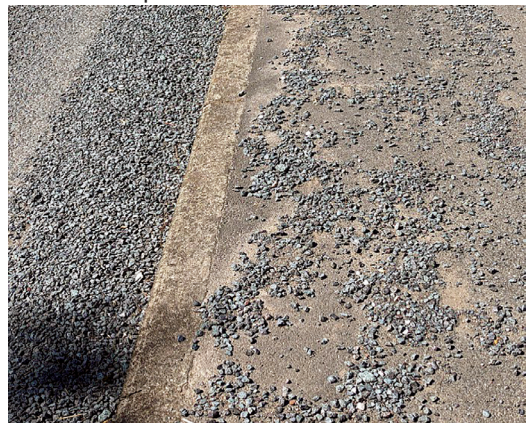
The photograph below shows the broken surface to the carriageway at the junction of Baslow Road with Lane Head Road. The RED surface is an anti-skid surface, which has badly broken up. Note the detritus from the broken surface



which has gathered in the kerb edge and on the footpath. I have been notifying Streetsahead of this problem since last year. At the end of April 2023, I got a phone call from an Amey employee telling me that "he had been out to look for a speed limit sign which had fallen down." As I was driving, on hands free of course, I took a moment to think what he was talking about. I realised that it was my report, which said that the red surface with the 30 MPH sign painted on it, had broken up. The penny dropped, but he had to refer it to someone else. End of communications! I have written to the Chair of Highways Committee on two occasions, inviting him to join me on a drive around. No response (and I saw him the other night at a meeting.) Sadly, this looks like another case of waiting until an accident occurs, or someone puts in a big claim for damaged wheels or suspension.

Totley, the pathway to Derbyshire

I have been writing to Streetsahead for years, literally, to get the footpath resurfaced from the bus terminus at Gillfield Woods, to the City boundary, as Amey promised when they started their contract. After some pressure, they cut back the bushes and shrubs which were growing over the path, nearer to the Brickworks. When I pressurised them about the footpath, they repeatedly asked me where it was! Next to the bushes which you have cut down? Do you want me to meet you there? No! The photo below shows the condition of the



path and the detritus which has washed off the 'path' and onto the road, and bus turn-round surface. I was going to show the Chair of Highways Committee this as well, had he taken up my invitation!

Roger Hart



Totley Rise Methodist Church

Grove Road, Sheffield, S17 4DJ

Totley Rise Methodist Church aims to be a church in the community and for the community, increasing an awareness of God's presence, celebrating God's love, caring for people, helping people to grow and encouraging people to follow Christ.

A Prayer for Summer

On the last weekend in June we, with other Christians and churches in the area, supported a free Fun Day as a gift to our community. The next weekend we were one of the hosts for Totley Open Gardens. Both events were greatly enjoyed by those who attended, and thanks are due to the organisers and helpers. And we also thank God:

God of summer, we thank you for the warmth of the sun and the increased daylight. We thank you for the beauty that surrounds us and the opportunity to be outside and enjoy your creation. Thank you for the increased time we have to be with our friends and family, and for the vacations that allow us to rest and renew. Help us to be more aware of your presence in all of our experiences, and to be more grateful for all that you have given us.

Regular Services Information

9.30am most Sundays – **Toddler Praise**. A 30-minute service for pre-school children and their parents/carers, preceded by refreshments from 9am.

10.30am **Mid-morning Service** every Sunday. An informal and contemporary service usually lasting approximately 1 hour 15 minutes, with a monthly Communion. Children usually leave the service for Junior Church after the first 15 minutes or so, except on the 4th Sunday of the month when the service is even more informal for **All Age Worship**.

3pm on the second Sunday of each month **Focus Church** takes place. This is a time of worship specially structured for those who have learning disabilities and cognitive difficulties.

We also support **Outdoor Church**, a movement where families with children can meet (usually on the 1st and 3rd Sundays of each month) to learn more about God's world and the Christian faith through an informal nature-focused time of fun and worship. See facebook.com/groups/outdoorchurch

Tuesdays at TRM

Tuesday is a busy day for us, beginning with a **Prayer Meeting** from 9.30-10am in the church. We focus on prayers for the community, for the world and any situations needing healing and the touch of God's hand.

From 10am until noon our free **Welcoming Places Coffee Morning** in the church lounge provides an opportunity for anybody to call in for free refreshments and a chat with others from the community. This began as part of the need for warm spaces for people to use when energy costs began to soar, but will continue through the summer. During the school holidays (except for the 8th and 29th August) the coffee morning will include children's activities from 10am to 11am, and baby singing from 11am until noon.

Knit, Natter, Craft and Chatter immediately follows the coffee morning, running to 3pm. This is a busy and friendly group, offering tea, coffee, biscuits and most importantly, friendship for up to three hours. Young and old, men and women are all welcome. Feel free to bring a packed lunch.

Pushchair Club

Babies and toddlers aged from 0 to 5 years are welcome to join us, with their carers, on Thursday mornings from 10.30 to 12 noon. Every week in term time, the Pushchair Club fills the TRM Centre, giving children, their parents and carers a place to come together, play, sing, chat and enjoy refreshments.

Room Hire

We make our facilities in the TRM Centre available to hire for

a variety of purposes, from community groups to birthday parties. There is the large church hall with a stage, and room hire also includes the use of kitchen facilities if required. For information, details of room charges and online booking requests, please visit our website.

The Quiet Garden

All are welcome to find stillness and peace in the Totley Rise Methodist Quiet Garden. You are invited to come, sit and



wonder about our creative God. It is a place of tranquillity and offers an opportunity, in the rush of modern life, to lay down your concerns. You can do this any time during daylight hours.

Getting and Staying in Touch

The best source of further information is our website, www.totleyrise.co.uk which publishes our weekly notices and offers links to video recordings of many of our services. You can also submit prayer requests, and we are on Facebook at facebook.com/TotleyRise

If you can't find what you need on the website, you can email enquiries@totleyrise.co.uk.

Beauchief Gardens Ceremony

On June 9th this year, a 'reopening' ceremony was held at Beauchief gardens to commemorate the work (and money)



which has been put into the gardens over the past 18 months. The photo above shows our Lord Mayor and councillor, Colin Ross, with MP Olivia Blake, at the opening ceremony, which was attended by over 50 people. Most enjoyed a cup of tea and cake (pictured below), specially made for the occasion.



Roger Hart

Totley Show 2023

A celebration of our community and its talent in aid of local charities

Saturday 16th September
at Totley Primary School

Admission to the show will be 50p for adults and 20p for children

We would be delighted to see you at the show and to receive your entries using the entry form overleaf

The Programme

- 8.45 Registration opens
- 10.45 Registration closes
- 11.00 Judging of classes
- 1.30 Doors open to the public**
- 1.45 Official opening of the Show
- 2.30 Prize money may be collected
- 3.15 Last raffle ticket sales
- 3.30 Prize-giving followed by raffle draw and auction of donated items
- 3.45 Collection of non-auction entries

How to Enter the Show

Please feel free to enter as many classes as you like! The entry fee is 50p per entry. You can enter up to three entries in any one class; no entry can have been in a previous Totley Show. If your entry doesn't fit one of our classes please still bring it along for display. Children may enter any class. All entries are left at owners' risk.

First (£3), second (£2) and third (£1) prizes will be awarded in each class, unless there are fewer than three entrants in an adult class in which case only a first prize will be awarded. All children's entries are recognised with a certificate and all children's class winners receive a medal. Cups or trophies are awarded to all section winners. A special trophy is awarded for the 'best in show'.

You may donate your item to be sold at the end of the show, but this is not compulsory. Any prize money not collected by 4pm will be put towards next year's show. Thank you for entering!

Notes:

Recipe to be used for Dundee cake class (use a deep 7" tin): 175g/6oz plain flour; 125g/4oz butter/margarine; 125g/4oz soft brown sugar; 2¼tsp baking powder; 1 rounded tsp mixed ground spice; 3 eggs, 125g/4oz raisins; 125g/4oz sultanas; 125g/4oz currants; 85g/3oz chopped mixed peel and chopped cherries; 40g/1½oz blanched almonds to decorate.

Recipe to be used for Victoria Sandwich class (use two 7" tins): 125g/4oz Margarine; 125g/4oz self raising flour; 125g/4oz caster sugar; 2 eggs. Fill with strawberry jam.

Children's handwriting classes (on an A5 page): 6-8s a nursery rhyme, 9-11s a poem, 12-14s: a Shakespeare quote.

Totley Show 2023

Entry Form

Please complete prior to bringing your entries for registration between 8.45 and 10.45am.

Name	
Phone	
email	
Address	

Please enter the number of items you would like to enter against each class at 50p per entry:

HANDICRAFT SECTION

1	Knitted or crocheted item	
2	Decorative cushion	
3	Soft toy	
4	Sewn garment	
5	Cross stitch	
6	Quilting / patchwork	
7	Greetings card	
8	Open handicraft any medium	

DOMESTIC SECTION

9	A cake (any recipe)	
10	Victoria sandwich (see recipe)	
11	Dundee cake (see recipe)	
12	Carrot cake (any recipe)	
13	Free from (any recipe)	
14	3 Fruit scones	
15	Loaf of bread	
16	Jam	
17	Lemon curd	
18	Marmalade	
19	Chutney	

FLORAL SECTION

20	Arrangement 18"x10"x10"	
21	3 Cut home grown flowers	
22	Flowering pot plant	

FRESH PRODUCE SECTION

23	4 Eating apples	
24	4 Cooking apples	
25	8 Blackberries	
26	5 or more mixed veg/ salad	
27	3 Courgettes	
28	5 Matching runner beans	
29	5 Tomatoes	
30	5 Cherry tomatoes	
31	1 Cucumber	
32	Heaviest marrow	
33	Longest runner bean	
34	3 Eggs from own hens	

ART & SCULPTURE SECTION

35	An original poem	
36	Oil or acrylic painting	
37	Watercolour	
38	Sketch in ink or pencil	
39	Upcycled art or sculpture	
40	Open art any medium	
41	Open sculpture any medium	

PHOTOGRAPHY SECTION

42	Black and white	
43	Portrait	
44	Animal – domestic or wild	
45	Landscape	

WOODWORK SECTION

46	Wood turning	
47	Open woodwork	

CHILDREN'S SECTION (up to 14)

48	Vegetable animal (up to 8)	
49	3 Decorative buns (up to 8)	
50	A cake any recipe (9 to 14)	
51	3 Biscuits (up to 8)	
52	3 Biscuits (9 to 14)	
53	Decorated gingerbread man	
54	Egg cup flower arrangement	
55	Painting or drawing (up to 5)	
56	Painting or drawing (6-8)	
57	Painting or drawing (9-11)	
58	Painting or drawing (12-14)	
59	Lego model <25cm ² (up to 8)	
60	Lego model <25cm ² (9-14)	
61	Colour photo (up to 14)	
62	Open any medium (up to 8)	
63	Open any medium (9 to 11)	
64	Open any medium (12 to 14)	
65	Handwriting (up to 8)	
66	Handwriting (9-11)	
67	Handwriting (12-14)	
68	An original poem	

Official use only

Entrant number	
Total number of entries	

Total entry fee due	
Entry fee paid	

Totley Scouts

Totley Scouts Spring Fun Day

What a fabulous Spring Fun Day we enjoyed at our Scout Hut on a sunny May afternoon! We were really pleased to have so many local people come along, as well as so many of our members and their families.



Thanks to the lovely weather, plenty of people made use of our outdoor space to sit back and relax, whilst enjoying our BBQ and bar. The live music, which was kindly provided by the fantastic Seven Hills Jazz Quintet, was very popular, too. There were also various activities available for all to try out, including traditional games like quoits, hook-a-duck, roll-a-penny, higher-or-lower, plus sports challenges like holding the longest plank or doing the most push-ups in 30 seconds.



In addition to the BBQ, there were lots of delicious bakes on sale, and following the announcement of the winner of the Totley Bake Off, Lilja Oskarsdottir, all the baked entries were auctioned off, providing great entertainment and helping us to raise more much needed funds. Plenty of people picked up some great bargains at the second hand toys and books stall, and the chocolate tombola was a hit throughout the afternoon!

Huge thanks to the Community Champion at Tesco Abbeydale Road, who provided us with both chocolate and fantastic prizes for the raffle. Much of the chocolate was also donated by our Scout group members. We are massively grateful for all this support - thank you to everyone who came along, helped or donated prizes/cakes. The event helped us to raise over £1000 towards our hut renovations, which is amazing!

Were you once a Beaver, Cub or Scout? Do you remember what you got from your time as a member? The skills young people learn and the experiences they have as members will stay with them and help shape their lives for years to come. You could help contribute to that experience by giving something back and helping out at our local group. We are really in need of help with running our Scout meetings.



You don't need to have experience of working with young people and you don't have to have been in Scouts yourself.

We're just looking for willingness to learn and work as part of a team, with a desire to help provide engaging activities and opportunities for local young people. We have male and female leaders; some are working, some are retired - the opportunities are open to all, and full training is provided.

Please contact our Group Scout Leader, Sue Bridgens, if you'd like to find out more about how you could get involved and help our local Scout group - you can contact her via Hallamadccubs@gmail.com.

Fran Arnold

Letter to the Editor

From Steve Wiles, Glover Road

In the June/July edition of 2022 you published a letter of mine headed up "Totley in Decline?". I am sad to say that in the following 12 months, nothing has changed. Cars are still parked on the pavement or grass verges. Pavements are overgrown and in many places it is impossible for two people to walk side by side. The central reservation on Baslow Road is a disgrace and the grass verges are completely overgrown, not with wild flowers but weeds and grass. Litter lies everywhere and I would hate to think what it would look like if it wasn't for our band of volunteer litter pickers, who do a great job.

This morning on my way to the paper shop, a black BMW was parked so far on the pavement I had to step into the road. On my back there was a chap stood next to it but he said it wasn't his and he didn't know whose it was. A man pushing a pushchair was walking towards me and I warned him he would have to step on to the road. How can that be safe on a very busy road?

I copied my original letter to our three councillors but got no response. We've since had local elections but that has not changed anything. Does nobody care any more?

After my original letter was published, a couple of people told me they agreed with what I said. Would anybody who agrees with me now, please write to the editor and/or your councillors and see if we can get any sort of improvement made?

Postscript: Since my original email, I have noticed some grass verges have been cut but, if there was something in the way such as a lamppost or street sign, they have not cut anywhere near them. They also use mowers without a basket, so grass cuttings are just left all over the place to blow wherever the wind takes them. This has still left Totley looking very scruffy.

Recently Spotted...

...by a reader at the bottom of Queen Victoria Road in June:



Left hands and right hands? VERY helpful for motorists unfamiliar with the area!

Totley Open



Gardens 2023





Totley Pharmacy

**Your local independent pharmacy
serving you for 26 years.**

24/7

prescription collection

Call: 0114 236 1070

Friends of Dore & Totley Station

New platforms are appearing

And also the footbridge with lifts. They should be complete by the end of October when the car park should be reopened. In the meantime if arriving after about 8am, Abbeydale Road South towards the Industrial Hamlet may offer the best overflow parking. The new platform won't be fully fitted out for use until late March 2024. The old one will be extended to six-carriage length and may be useable from an earlier date.



Services now

Industrial relations issues continue to blight the railway. In previous issues I've hoped peace might have been achieved well before now. Sadly, that remains wishful thinking. Currently we face strikes by drivers and bans on overtime, the details of which may change from week to week. It's essential to check the latest details before travelling. That said, Northern and East Midland services on our line have been running much better in recent weeks. The Hope Valley route is manned by Northern crews from Manchester. Unfortunately other Northern routes manned from Sheffield are suffering from a lack of drivers so there have been many cancellations.

TransPennine Express are doing better than they were but there's still some way to go. Their new Interim Managing Director, Chris Jackson, has been seconded from Northern – where he was responsible for our line. I've met him and he gets things done. If anyone can resolve their problems they have a good man.

Ticket Office closure consultation

What difference will it make? For users of the Hope Valley line very little, as none of our stations have had a ticket office since 1969. The ticket office at Sheffield is to remain open and service will still be provided at Chesterfield, although the details as to how are yet to be announced.

Northern say: *as customer habits have changed, people have moved to other, more convenient ways of buying tickets. Many people prefer to buy online or use apps, a trend that is expected to continue. Nationally just 12% of ticket sales are made through a ticket office.*

We operate 318 stations without ticket offices. Our proposals will mean that ticket offices at a further 131 stations will close. We will also reduce the number of hours that Northern colleagues are present at these stations. We plan to close our ticket offices in phases over an 18-month period, subject to the outcome of this consultation.

As part of our proposed changes to ticket offices, we will be removing all existing ticket office roles. Instead we will bring our ticket office colleagues into new Journey Maker roles to help customers around the station. Journey Makers will be based at stations, although no longer within ticket offices. They'll be available in other areas of the station to help customers face to face with a wide range of needs. This includes supporting people who need extra help travelling through our stations and onto trains. All 149 stations where we have ticket offices currently will continue to have a colleague presence.

Other operators are proposing similar changes. London

Underground started closing all their ticket offices in 2017, apparently 'successfully,' and it seems that lessons learned from that model are being used to plan this wider application.

To add your views to this consultation go the website of Transport Focus. The full web address is <https://www.transportfocus.org.uk/train-station-ticket-office-consultation/>

Closer to home at Dore & Totley station, we're probably better catered for than we have been since 1969 – as long as the ticket machine works and we don't all want to use it at the same time! It does a lot more than you might think -

- Quick buy tickets to travel now
- Journey planner for future journeys across the country between any stations
- Collect tickets ordered online
- Load season tickets onto a Smartcard
- Buy Rangers and Rovers nationwide
- Find live information on the next 5 departures
- Obtain a Promise to pay ticket and pay cash on the train
- Obtain help and assistance on all the above with a live video call to an adviser in Sheffield



It's noticeable that many travellers from Dore & Totley have adapted to electronic ticketing very well, and they aren't all young. No need for a printed ticket, just a well-charged smartphone (personal admission: I still print out a copy of the QR coded ticket at home to be on the safe side!

Try a £6 Merseyrail Day Saver

Just one example that you can buy from our ticket machine. Get a morning East Midlands or TransPennine through train to Liverpool Lime Street (or Liverpool South Parkway, for Liverpool Airport) and explore from Chester to Southport or out to West Kirby. For walkers there are lots of flat coastal golf links to explore with good fresh sea air. However you shouldn't plan a walk along Southport Pier – it's currently closed for safety reasons!

If you're a Facebook user, you can find and join us by searching for FoDaTS. It's a very active group and is updated frequently with topical information and comments.

Alternatively look for our website at www.fodats.net

If you're not on Facebook and would like more information please send an email to our Secretary; njbarnes@outlook.com

Chris Morgan, Chairman



CHARISMA BLINDS

For
Windows
With Style

Sheffield Factory Showroom
106 PROSPECT ROAD
HEELEY, SHEFFIELD

Sheffield (0114) 258 5496
Rotherham (01709) 512113

Totley Rise Methodist Church Knit and Natter, Craft and Chatter group

We are a friendly group, and we invite you to come along, see what we're doing and join in. All are welcome!

We meet every Tuesday in the TRMC church lounge from 12noon until 3 pm to create and chat, compare notes, share patterns and problems, drink tea and coffee and eat biscuits! Bring your lunch with you if you wish!

Wool and needles supplied for those making charity items. All are welcome - learners will be given help and inspiration!

We knit or crochet for many charities, and also sell items to raise funds to support Works Ltd and Amy's House. Why not come by and check it out?

Charities we Support:

Chesterfield Hospital, premature baby unit, Jessops premature baby unit, Jessops Transitional Care, Roundabout (Teens), the Archer Project and St. Wilfreds, Sheffield Royal Institute for the Blind, Clic Sergeant (Team Cancer Patients), Sick Children's Society, Amy's House and Molly's Mates, Baby Basics (also supporting refugees), Hallamshire League of Friends shop, Salvation Army shop.

We make:

Small blankets, hats and Angel Baby blankets (shrouds for stillborns), baby cardigans, adult hats, scarves, and gloves (and sanitary products, and toiletries bought with cash from sales plus any donated items), pink elephants, chickens with creme eggs (Easter) tree decoration stockings and puddings with chocolate inside (Christmas), stuffed hedgehogs, knee blankets, and teddies), Adults and children's jumpers, cardigans, blankets, plus other donated items.

We will have a stall at the Totley Show – please come by and say hello!

(PS some just come to chatter and natter – that's fine too, come and make new friends, or meet up with old ones!)

Dental – Medical – Physiotherapy – Acupuncture



HIGH TREES
CLINIC

Specialist and Routine Private Dental and Medical Clinic located in Dore

NEW PATIENTS WELCOME

APPOINTMENTS FROM £50.00

We're here to help you monitor and optimise your health with our GP and Physical Therapists.

Keeping track of your well-being should be an essential part of your self-care routine



DENTAL

Routine Dental Appointments
Restorative Treatment
Fixed braces and Clear aligners
Teeth Whitening
Composite Bonding and Veneers
Emergency Appointments



MEDICAL THERAPIES

Medical Examinations
Occupational Health and Travel
Vaccinations
Skin Lesion Check and Removal
Medical Forms and Referrals
Blood Tests & Analysis
Facial Aesthetics



Tel: 0114 349 3326

37 Townhead Road, Dore, Sheffield, S17 3GD

hightreesclinic@gmail.com www.hightreesclinic.co.uk

Please call or email the clinic for further information or to schedule an appointment

Totley Primary School

A Sports Day to Remember

In amongst the hustle and bustle of the summer term - which I am delighted to say has been packed to the rafters with exciting transition visits, trips and performances - one event which was undoubtedly a highlight was our annual sports day at Abbeydale Sports Club.

With Totley Primary having reached its full capacity of two forms in each year group, we realised last year that our sports day format needed to evolve. Our aim was to retain the spirit of healthy competition between our four school houses (Burbage, Curbar, Froggatt and Stanage) whilst increasing levels of participation for the children.



Key changes for 2023 included splitting the day so that younger children competed in the morning, with the afternoon reserved for the older year groups. For the first time, our Reception aged children joined in with the day (having previously enjoyed a separate sports day on the school field). A cross-over picnic for children and spectators at lunchtime ensured that the community feel of the whole school coming together was very much maintained, with some impressive hampers on show!



Events this year ranged from athletic standards such as the sprint, relay and long jump, to sports day classics such as the sack race and egg and spoon. The schedule was planned so that events ran simultaneously, allowing all children to take part in every event this year and ensuring high levels of activity throughout the day. The sheer size of the sports field at Abbeydale meant that there was plenty of room for the various events to run at the same time, whilst allowing spectators to view their own children with relative ease. Results from each event were tallied up by staff, which contributed to the overall scoreboard which brought together both morning and afternoon competitions.

Feedback on the new format from both children and spectators was overwhelmingly positive and it will certainly be one to use again in future. A special thank you to Mr Flevill, our PE curriculum leader, for planning the day with such aplomb and congratulations to Curbar, our 2023 winners!

Ben Paxman, Headteacher



Chapel of Ease, English Martyrs in Totley

We are one of the two churches that make up the Roman Catholic parish of Our Lady of Beauchief & Our Lady of St. Thomas of Canterbury, part of the Diocese of Hallam. Fr Stephen Ssekiwunga is our parish priest.

Masses are usually held twice weekly - a vigil Mass on Saturday evening at 5pm and Tuesday morning at 10am.

Being able to worship in a chapel that is easily accessible with a car park is a great boon to those of us less fit than we used to be!

Everyone is welcome to join our services, whatever their religious persuasion. You might even get a hot drink and a biscuit on Tuesdays.

I was recently privileged to attend the ordination to deaconate of our seminarian, Christian Nwakamma. He will be assisting in our parish until the end of the year and in twelve months, God willing, will be ordained priest.

Please keep him and all of us in your prayers.

Barbara Richardson, Parishioner

Continuing local traffic headaches

I attended the latest Local Area Committee and a contributor was concerned about the effects on parking in the area of King Ecqbert School and its extension, expressing the difficulties which residents suffer now. This made me think about traffic difficulties generally in the area, especially when the school is extended.

I have written to Cllr. Colin Ross, raising the question. There are traffic-light controlled crossings at the top of Totley, for the school, and one at Main Avenue for the school, but then nothing until the Glover Road junction. What about the children from Akley Bank and the Crescent, and the elderly and disabled, who cross Baslow Road here? This junction is busy and complicated with u-turns in all directions, bus stops opposite each other, double parking outside the Ironing Parlour, Pharmacy and Co-op, and traffic emerging from Mickley Lane and the Crescent - all contending with the high volume of vehicles on the road, especially the increase in HGV's carrying stone and stone products, much of it going to HS2.

Then, we cannot forget the junction at Bushey Wood Road, Totley Brook Road and Abbeydale Road South! No light controlled crossing there, and very complicated traffic movements - parking at the junction, two direction bus route on Totley Brook Road, and bus stops each side of the main road.

Factor in articulated HGV lorries delivering to Tesco, having to drive up the down lane, across the bus stop! (Do planners think about deliveries?) No doubt there have been minor accidents, but do we really have to wait for a fatal accident to get something done? We should not forget the congestion caused at school times, and how it affects residents of the adjoining roads.

I was Chair of a Community group when we had a public meeting regarding the dangers of the Mickley Lane junction. The traffic planning officer told me, off the record, that there had not been enough deaths to justify a pedestrian controlled crossing!

We get regular visits of the Police Traffic Cameras to slow vehicles down, supposedly - but still 27% of offenders live in the S17 area!

Roger Hart

IRONING PARLOUR

01142 364073

DRY
CLEANING

IRONING

REPAIRS

WASHING
&
DRYING

SPECIAL OFFER
DRY CLEANING
20% OFF
ON 4 OR MORE
GARMENTS

SPECIAL OFFER
CARPET CLEANER
FOR HIRE
£24.99

IRONING
PARLOUR

Established 2001

Serving the Community for 20 years

Call Lynne and Gail for all your laundry needs

**IRONING
PARLOUR**

**LOCAL
COLLECTION
&
DELIVERY
SERVICE**

Unstone GardenScapes

Let us
transform your
garden

From concept to
completion

Fully insured.
Over 25 years experience.
Portfolio available.

Decking Fencing Patios Turfing Planting
Or just a general tidy up

Call Jason for a free quote
Mobile 07791069360



yes you can
with
Slimming
World

NEW CONSULTANT

Millhouses Methodist Church
Millhouses Lane
S7 2HA
Thursdays at 5.30pm & 7.00pm

Call Yvonne on 07895 965469

slimmingworld.co.uk

Slimming
WORLD
touching hearts, changing lives



**GRANT'S
CLEANING
SOLUTIONS**

Window Cleaning & Gutter Cleaning

Please Contact Benjamin Grant For A Free Quote:

Tel: 07780432717

Email: info@grantscleaningsolutions.com

Web: Grantscleaningsolutions.com



Transport 17

What do we do?

Transport 17 provides transport services to older and vulnerable people predominantly - but not exclusively - living in SW Sheffield who would otherwise be unable to leave home.

Getting out provides the opportunity for them to socialise in the local community which reduces isolation, has a positive impact on their mental health, and improves not only their own quality of life, but that of their friends and families.

T17 is dependent on volunteers to provide our transport services. This in turn provides opportunities for individuals across the age range to develop their skills, confidence, and friendship groups.

Passenger journeys

In January 2022 we completed 346 passenger journeys, an average of 86 per week.

In January 2023 we completed 516 passenger journeys, an average of 129 per week. This is an increase of 33%.

In 2022 (Feb - Dec) we took 162 different passengers on our buses, 87 of whom were new to T17 (54% were new passengers).

For some clubs the number of passengers has remained fairly consistent and for others, numbers have almost doubled. For example, in February 2022 -

- we took an average of 5 passengers each week to Dore and Totley URC. By last Autumn this had increased to 10/11 and has remained consistent
- we took an average of 6 passengers to St Stephen's Church, Crosspool. This has increased to a consistent 11.

How can you help Transport 17?

- Volunteer to drive a minibus or assist our passengers
- Come to our coffee mornings and other fundraising events
- Support others in the area who raise funds for Transport 17
- Find us, like us and follow us on Facebook
- Donate directly using this QR code via www.justgiving.com/transport17tduk
- Think about leaving a legacy in your will to Transport 17
- Volunteer to help to organise fundraising events
- Consider company sponsorship to help us to meet the cost of our minibuses and equipment
- Donate your time and/or specific skills and help refurbish the offices or update our website



Did you know that we need:

- £5 for an ID badge for one volunteer
- £15 for a volunteer sweatshirt
- £25 for a pack of 6 headlight bulbs for a minibus or 2 seatbelt extensions
- £50 for a statutory safety inspection (each bus is required to undergo one every 10 weeks - and we have three!)

News

As you may know, Liz Croft, our administrative assistant left T17 earlier in the year. We thank Liz for the contribution she made to Transport 17 during the time she was employed with us. The compassion she had for our passengers shone through every day. We wish her all the best for her future ventures.

As I write this we are in the process of advertising and recruiting. I would hope that by the time you are reading this we will have filled the vacancy and that we will be able to introduce you to a new member of staff in the next issue.

Thank you

We continue to be thankful for the ongoing support from both individuals and groups within the local community. We recently received a generous donation from Our Lady and

St Thomas (OLST) Outreach (charities group). Each May the group holds a Coffee, Cakes and Cuttings Event at the English Martyrs church on Baslow Road. Traditionally, this particular event has been used to support T17 as it enables several of their parishioners to join a service followed by soup and cake at OLST church at Meadowhead on a Friday. Without T17, these individuals would not be able to get out and socialise with their church community.



T17 employees and volunteers accepting the donation of £300 from Our Lady and St Thomas (OLST) Outreach (charities group).

Come and join us, and support Transport 17 over the coming months

We are planning some 'Open Office' sessions at T17 where you can join us for a cup of tea and find out more information about our organisation, and particularly the volunteering opportunities available. These will be held on the second Monday of each month from 10am - 11.30am:

- Monday 14th August
- Monday 11th September
- Monday 9th October
- Monday 13th November, and
- Monday 11th December

We will be at:

Dore Show, The Old School and Dore Methodist Church Hall 12 - 3.30pm, Saturday 9th September

Totley Show, Totley Primary School, Baslow Rd 1.30 - 3.30pm, Saturday 16th September

A Celebration of the Music of the Beatles: live music concert in support of T17 at Christ Church Dore Community Centre, Townhead Road, 7.30, Saturday 30th September - see display advert on page 7 of this issue of *Totley Independent*.

Christmas Fayre, Venue and Date TBC End November, 2023

We look forward to seeing you there, to catching up with familiar faces, old friends, and meeting a new generation of volunteers and supporters.

RICHARDS TELEVISION, SATELLITE, VCR, DVD REPAIR OR INSTALLATIONS

- City & Guilds London Inst. Fully Qualified
- Over 25 Years Professional Experience
- Most Makes & Models Repaired. No VAT
- For Prompt, Friendly Service Ring:

0114 2876806

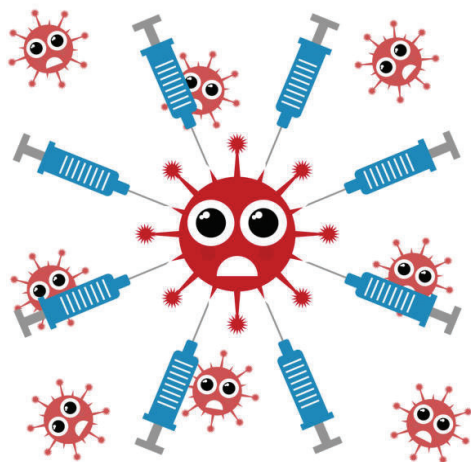
Ask for Richard. Ex Bunker & Pratley

Ask Your Pharmacist

Travel advice from Totley Pharmacy

"The World Is A Book And Those Who Do Not Travel Read Only One Page." – Augustine Of Hippo

We are now seeing the greatest amount of patients visiting our travel vaccination service we have ever had, with numbers higher even than pre-pandemic levels. This suggests that many people are now returning to holidaying to exotic and far-flung locations. Perhaps you have decided that it is time to start striking things off the bucket list. While travelling to unexplored and new territories brings a sense of excitement and new experiences, many of these places will require forward-planning to ensure you have the best time possible and create fantastic memories. When travelling further afield than simply Europe, extra vaccinations may well be required. Whilst we are fortunate in this country not to have to worry about many of the illnesses that need vaccination, unfortunately some remain prevalent in other parts of the world. Since many illnesses can be nasty, protecting yourself is essential. The costs of vaccines are nowadays low compared to the cost of your holiday overall.



Working out which vaccinations are required, how many of each are needed, at what intervals, and how long preceding travel, can be like entering a maze. Having an expert to hold your hand and guide you out of this maze can take an enormous amount of the stress out of your planning. In the ever-changing world of healthcare and post-pandemic travel, finding clinics providing good advice is becoming increasingly difficult. Making sense of such advice can be even trickier when trying to deal with online clinics. Sometimes a friendly face across a counter can make things go much smoother.

Fortunately for local residents, we provide a travel clinic at Totley Pharmacy, offering all vaccines. We are also now an officially certified Yellow Fever clinic. Both our pharmacists have undertaken the appropriate training and can offer you all the advice you need. This advice is entirely free, even if you choose not to have any vaccines. However, since our

charges are amongst the most competitive available, we see no reason why you would not take advantage of the expert advice locally.

We can also advise on whether any malaria prophylaxis medication is needed for your destination. If it is needed, we will check which is the best option for you and make sure it is suitable for you, and compatible with any medication you may be taking.

If you want us to help with any vaccination or malaria queries, pop in to see us, or visit our website and complete the travel form at <https://totleypharmacy.co.uk/travel-clinic>. We will then call you back with the appropriate advice. It is important to allow enough time for your vaccinations before you fly, but if needed, an emergency vaccination can be provided – you may just not get the full protection.

When travelling abroad, it is important to think of other healthcare needs such as insect repellents (which may need to be stronger than what works locally), antihistamines and bite treatments, traveller's tummy treatment and rehydration options. If you need advice on a first aid / travel kit, pop in to see us. Even with insect repellents, it is advisable in certain conditions to ensure adequate skin coverage with clothing.

You should also ensure that you have adequate and appropriate sun protection. It is important to use a quality, high factor sun cream which should be applied in sufficient amounts regularly. It is recommended to apply 2mg/sq cm of exposed skin (about 35ml) of lotion each time. If you are heading away on holiday, ensure you take enough lotion. The sunscreen you apply should have a SPF rating of at least 30 and should protect against UVA and UVB. If you do get sunburnt, make sure to get out of the sun as quickly as possible, and then cool off by sponging it with cold water. Drink plenty of fluids to cool you down and prevent dehydration. Take painkillers to relieve the pain and do not go out in the sun until the skin is healed. The more often you get sunburnt, especially when you are young, the more likely you could get skin cancer.

If you are travelling on a long-haul flight, you should also consider the risk of deep vein thrombosis (DVT). It is important to stay hydrated, take occasional walks to keep the circulation going and go steady with enjoying the drinks trolley. Flight socks can be helpful – if you need measuring for a pair, we are happy to help. A lesser known tip is to ensure dry eye sufferers use their eye drops regularly as the pressurised air tends to dry eyes.

You should also ensure that you have sufficient quantities of your regular medication to last while you are away. Please check to ensure that you can get your prescription in time. This may mean you need to order your prescription earlier than usual or request an extra month's prescription. If we manage your prescription for you, or you simply need help with this, let us know.

Have a safe and healthy holiday and may you bring back many happy memories.

Taj and Jasmine

LIBERTY FOODS

Caterers
Quality Meat Shop
& Fresh Farm Produce

Fresh and Frozen Prepared Meals
Fresh Meat and Poultry
Outside Catering
Home Delivery

253 Baslow Road, Sheffield, S17 4DU
Tel: 0114 2360 583 Mobile: 07801 346 455
Email: damianbower@liberty-foods.co.uk



Train with Suzy offers Personal Training Focussed on Fitness, Fat loss and Toning. Based in Dore with own Gym. I offer private sessions individually tailored to your goals.

**Call to book your free consultation
07825-167411 www.trainwithsuzy.com**

Pottery classes in Totley

Local potter Rachel Collier is offering pottery classes for beginners, and other sessions, at her pottery studio in Totley. You can arrange social coffee mornings, group sessions, corporate team building, workshops, pottery parties, hen parties, and family workshops.

Rachel also hand-makes ceramic tableware and pots for your garden. If you are seeking to purchase a one-of-a-kind piece or learn a new skill, contact Rachel at her studio. Beginners wheel throwing sessions are coming soon.



Please see www.rachelcollyerceramics.com to join the mailing list and be kept up to date with the latest news. Or call Rachel on 07763 983736 to learn more about the studio or to book a class.

Totley Open Gardens

We had a very good Totley Open Gardens weekend on the 1st and 2nd July, and together with income from the Totley Yard Sale and the Totley Vintage Fair both in May, we will be distributing a total of £6,000 to the four community organisations that TOGA is supporting this year, based on proportions agreed at our last Social in May.

Cherry Tree Support Services	35%	£2,100
Totley Scout Hut Appeal	30%	£1,800
Transport 17	25%	£1,500
Totley Library	10%	£600

There will be another Totley Vintage Fair on 28th October from 10-4pm in St Johns Hall, Abbeydale Road South – a few stalls are still available. Contact Chris Jenkins: christine.jenkins1@sky.com;

Jennie Street
jennie@hadish.f9.co.uk



All Saints Church

It's that time of year where everything seems to be changing. The plants seem to have grown six feet in the time it takes to drink your cup of tea, the children are having their 'move-up days' in the schools and the rush is on

before the summer break. Things are changing at church too. In July we said goodbye to our associate minister Ali, who has moved to live by the sea. Ali has been a popular member of the church community, and she'll be missed by many in Totley. Ali's departure is a loss for All Saints, but we wish her all the best in her new home. We know that she will be a great asset to the church community where she goes.

In other changes: as I write, the work on the memorial garden is nearing completion. The memorial garden is expected to be completed by the time this article is published. Once it is finished, it will be a beautiful and peaceful place for people to come to remember and honour their loved ones. Before we can bury people there, we need the Bishop to come and consecrate the land. We are in the process of getting the legalities for this sorted but will be in touch with those who have registered interest as soon as we have a date.

In addition to the memorial garden, All Saints is hosting a number of free social events this summer. These events are open to everyone, and they are a great way to get to know the church community.

Some of the events that are being planned include:

- Totley Treasure Hunt on August 1st, 2023: Join us at 7pm at All Saints Church Totley to take part in a treasure hunt like no other!
- Ed Deakin's Gentle Evening Walk on August 9th, 2023:

Starting point: All Saints Totley This lovely evening stroll does not need booking - just turn up at All Saints Totley Church Hall 7pm

- Relaxed Quiz Night on August 15th, 2023: Join us for our summer socials quiz night at All Saint's Church Totley.

We hope to see you at one of our summer social events!

For more information about the social events, please visit the church's website or social media pages.

Rev'd Ben Tanner, Vicar
M: 07912890512
E: ben@allsaintstotley.church
www.allsaintstotley.church

Totley Hall Lane, Sheffield | S174FA

Councillors' Update

Colin Ross reports that he has been very busy with Lord Mayor duties around the City. He has opened many galas, visited a host of businesses and schools, unveiled a memorial to the Sheffield Pals of the First World War at Redmires, welcomed national and international conferences to the city and met Prince William. Locally he was at the Totley Fun Day, unveiled a plaque to mark the rejuvenation of Beauchief Gardens, launched the tree trail in Whirlow Brook Park, opened Dore Gala and took part in one of the local Health walks which is supported by the ward pot.

One of the features of these visits is realising just how important is the role of volunteers. They really do make a difference in so many important ways. Locally we have many groups that rely on volunteers but it is noticeable that many organisations are struggling to recruit new volunteers as the age of their existing volunteer base gets older. The pandemic caused a cessation of a great deal of activity and unfortunately many volunteers have not returned after the break.

If you have a few hours to spare please think about contributing to one of the many organisations that really do make a difference to people's lives. In all the organisations that we come across we find that it is the volunteers as well as the clients that get a lot out of the experience.

martin.smith@councillor.sheffield.gov.uk
colin.ross@counillor.sheffield.gov.uk
joe.otten@councillor.sheffield.gov.uk

Longshaw Sheep Dog Trials

Longshaw Sheep Dog Trials will take place again this year on 31st August, 1st and 2nd September on Longshaw Pastures in front of Longshaw Lodge, near Grindleford, starting at approximately 7.30am each morning and members of the public will be most welcome to attend once. We are very honoured this year to have Mr. David Grey MBE as our President.

On 31st and 1st there will be open class and brace class sheep dog trials when many of the "One Man and His Dog" competitors will be taking part.

Following the local class sheep dog trial on Saturday 2nd the Longshaw Fell Race is to be run. Starting at approx. 10.30am. from the trial field, this year the race is to be pre-entry once again.

Starting at approximately 12.30 on Saturday 2nd the trials culminate in a double gather championship, which consists of the 8 highest pointed runs from both Thursday and Friday, when the winner will take home and keep the prestigious Longshaw Championship silver tea pot.

Entrance charges are just £5.00 per adult each day (no charge for children) and free parking. We start at approximately 7.30am, weather permitting, finishing at approximately 5.30pm. For further information please contact the Secretary, Mrs. Sheila Humphreys MBE on 01433 651852, e-mail lsdta@talktalk.net or check out the website www.longshawsheepdog.co.uk

There will be a licensed bar, hot and cold food and drinks, and ice cream available. The magnificent array of trophies will be on display, so please come and join us for a day on the moors to see some of the wisest dogs in the world!



Scrivens Quality Greengrocer
Free delivery service available 6 days per week

Mark Billingsley - Owner 37 Baslow Road
Home Delivery - 0114 2367116 Sheffield S17 3DL
Trade Enquiries - 07885 866376 scrivensstoyou@gmail.com 



Oven Wizards
We clean your oven...so you don't have to

Call today to have your oven, hob, extractor or Aga professionally cleaned by Pippa Weir! Pippa's contact details are:
Tel 0114 258 3466 or mobile tel. 07716 992648
www.ovenwizards.com




RHYTHM TIME

Fun, developmental music classes!

Join us in **Totley**

All Saints Church Hall
Thursday
Toddlers - 9:30
Babies - 10:15

Also in:
Greenhill
Crosspool
Bents Green
Bakewell
Dronfield
Fulwood

Contact Beth
beth.w@rhythmtime.org
07748 589 468

or book here:
rhythmtime.net



Twelve Trees

Always there to care

FAMILY RUN, AWARD WINNING, PREMIUM HOME CARE SERVICE

Twelve Trees is an innovative Home Care provider operating from our offices in Nether Edge. We offer something unique to our clients by providing bespoke care packages designed to meet your care needs. We are proud to have been providing care for the elderly for over 25 years.



RESPIRE AT HOME & LIVE-IN CARE

Caring for a loved one can be a full-time job. If you need a break but don't want the upheaval of moving your loved one into a care home, we can help.

Our Respite at Home and Live-In Care services allow your loved one to remain at home in familiar surroundings, whilst still receiving all the care and support they need.



CONTACT US

If you'd like to hear more about any of our services, contact us on

0114 349 7837

or email

admin@twelvetreescare.co.uk

Twelve Trees Home Care
Suite 11, Cherry Tree Business Centre,
Nether Edge, Sheffield, S11 9EF

Activity	Venue	Primary Contact (Group leader)
Coffee and exercise classes: Strength and balance Welcoming spaces- Exercise and coffee Gentle and seated Gentle Circuits	Bradway Community Hall Dore and Totley United Reformed Church Totley Library/CRIC Fulwood Chapel	Community Wellness Service – 0114 553 7807
Sporting Chatter / Sporting Chatter films	Dore and Totley United Reformed Church	Phillip Staton – 07788 620313
Singing Teapot Choir	Dore and Totley United Reformed Church	Yo Tozer Loft -07925 634420
Welcoming space (board games, refreshments, and biscuits)	Dore Methodist Church Hall	10.30 to 13.30 every Wednesday- No booking requirement - just drop in
Dore and Totley Rosemary memory café (Dementia targeted)	Dore Methodist Church Hall	AUKS-0114 250 2850
Cosy Creatives	Online with trained Art Therapist	AUKS -0114 250 2850
Well With Nature	Cricket Inn, Totley	Caroline Cook – 07583 551705
Forest Bathing	Graves Park	Caroline Cook- 07583 551705
Woodwork Wellbeing	Bradway Community Hall	Steven Fridlington – woodworkwellbeing@ouytlook.com 07900 344361
Ecclesall and Bannercross Forum	Cherry Tree Pub, Carterknowle	Paul May – paulmay@blueyonder.co.uk
Dance to Health Sheffield	St Augustine's Church, Endcliffe	NesreenShah@ae-sop.org 01993 870159
Community Journalism and Memoir Writing	Online activity with qualified writer and journalist	Kathryn Reaney - reaneywrites@gmail.com , 07854 751932
Table Tennis	Bradway Community Hall	Jan – 07787 954842 /0114 4186463
S11 Carers Walk	Various	Sheffield Carers Centre -0114 278 8942
Natter Coffee Morning	Totley CRIC	Totley All Saints Church -0114 236 7627
Coffee on the Corner social drop in	Coffee on the Corner – Totley	Coffee on the Corner- 07941 780772
South West Friendship Lunches (dinner, Entertainment)	Shepley Spitfire pub, Totley	0114 236 0298
	Robin Hood Pub, Millhouses	0114 236 9107
	Crosspool Tavern Pub, Crosspool	0114 266 2113
	The Ball Inn, Crookes	0114 266 1211
	The Shiny Chef , Fullwood	0114 303 0556
Fullwood Memory Café (Dementia targeted)	Fulwood Scout Hut	Eliza@AUKS - 0114 250 2850
S17 Carers Café	Border View Farm	Sheffield Carers Centre - 01142788942
Calmly Create	Fulwood Old Chapel School Room, 8 Whiteley Lane, S10 4GL	S. Yorkshire Chaplaincy & Listening Service, 07903 899751 sycls@sycls.co.uk

TOTLEY & DISTRICT DIARY

- MONDAYS** **AGE UK FITNESS** Dore & Totley United Reformed Church, 1.30-2.30 pm. Contact Jo Woodward 250 2850
GUIDES, All Saints Church Hall, 6.45pm-9pm
SLIMMING WORLD Totley Rise Methodist Church, 5pm and 7pm. Call Sarah on 07577 070797
- TUESDAYS** **PILATES** The Old School, Dore, 9.30-10.30am. Phone Sally Kilner 07917 762502
TOTLEY OPERATIC AND DRAMATIC SOCIETY (TOADS) meets 7.30pm to 10pm, in the Guild Room, St John's Church, Abbeydale Road South. For more information call 0114 2351206
BABY TIME Totley Library, Tuesday 1.30-2.15pm (term-times only). Come along to meet other parents/carers and babies. We sing simple songs, have fun and allow time to chat
SHEFFIELD MARQUETRY GROUP 10am-12noon, St Oswald's Church Crypt, Bannerdale Rd. Small friendly group - beginners welcome. For information phone Graeme 07947 127909 or Pat 0114 2819915
KNIT, NATTER, CRAFT & CHATTER Totley Rise Methodist Church, 12 noon-3pm
JAZZ IN THE AFTERNOON 1.30-3.30pm, Totley Rise Methodist Church Schoolroom. A weekly afternoon of all forms of recorded jazz, plus discussion. Tea, coffee and biscuits available
YOGA CLASS 1.15 - 2.45pm at Dore and Totley United Reformed Church. Contact Rachel (qualified level 4 BWY teacher) 07708 996984 or yogaq@hotmail.co.uk
WELCOMING PLACES COFFEE MORNING open to all, Totley Rise Methodist Church, 10am to 12 noon
TAI CHI Dore and Totley United Reformed Church 4-5 pm. Contact Bernice on 07999 617387
- WEDNESDAYS** **PILATES CLASSES** Dore & Totley United Reformed Church, 9.00-10.00am and 10.15-11.15am. Contact Caroline tel: 0781 722 0324, email Carolinenorth1@me.com, www.pilatescarolinenorth.co.uk
CARERS' CAFE MONTHLY Dore & Totley United Reformed Church 10-11.30 am. Contact Jan Outram 0114 278 942
COFFEE IN THE LIBRARY 10.30am-12.30pm. Come and have a coffee and a chat
STORY TIME for toddlers and pre-school children at Totley Library from 10am - 11.30am (except school holidays). Children can take part in weekly themed craft activities, sing songs and listen to a story. £1 donation per child greatly appreciated
TODDLER GROUP 10am-11.30am, All Saints' Church Hall. Details tel. Liz Hayden 07969 826464
HEALTH WALKS 10.30am, meet at Totley Library. Contact Step Out Sheffield on 07505 639524 or email stepoutsheffield@gmail.com
YOGA CLASS 6.30 - 8pm at St Johns Church Hall Totley. Contact Rachel (qualified level 4 BWY teacher) 07708 996984 or yogaq@hotmail.co.uk
- THURSDAYS** **RHYTHM TIME** Baby, toddler & pre-schooler music sessions 9.00-11.30 Details Email: beth.w@rhythmtime.org Phone/WhatsApp: 07748 589468 To book: <https://rhythmtime.net/find-a-class>
ROCKCHOIR United Reformed Church, Totley Brook Rd, 11.30-1pm. See www.rockchoir.com or call 01252 714276
CHAIR AEROBICS Totley Library, 12-12.45pm with Laura. An Age UK and People Keeping Well weekly exercise class. £4 per week, no need to pre-book, just turn up.
SOCIAL CLUB Dore and Totley URC fortnightly 2.30-4.30 pm Contact Alison Holden for information 236 0441
PUSHCHAIR CLUB Totley Rise Methodist Church Hall, 10.30-12noon. Tel. 07912 352543 for details
PILATES CLASS run by qualified Pilates Instructor/Physiotherapist for all abilities and ages. 1.30-2.30pm, 5.15-6.15pm and 6.15-7.15pm at the United Reformed Church, Totley Brook Road. Call Emer on 07792 422909
- FRIDAYS** **PILATES** The Old School, Dore, 9.30-10.30am and 10.45-11.45am. Phone Sally Kilner 07917 762502

AUGUST

- SUN 6th MINIATURE TRAIN RIDES** Our annual Children's Hospital Charity fund raising event - all ticket sales will be donated. 1pm - 5pm - Abbeydale Road South. £2 per ride per person. Car park closes 5pm. See www.sheffieldmodelengineers.com
WED 9th TOTLEY PROBUS CLUB 10am in Room 1, Totley Rise Methodist Church. Talk by Peter Stubbs on "Admiral Collingwood - Nelson's greatest friend". Guests are always welcome - we are always looking for new members.
SUN 20th MINIATURE TRAIN RIDES 1pm - 5pm. Abbeydale Road South. £2 per ride per person. Car park closes 5pm. See www.sheffieldmodelengineers.com
SAT 26th TOTLEY LITTER PICKING MORNING 10-11am. Equipment provided. This activity is done at participants' own risk. Children must be accompanied by an adult. Meet Baslow Rd, outside Totley Library. All welcome.

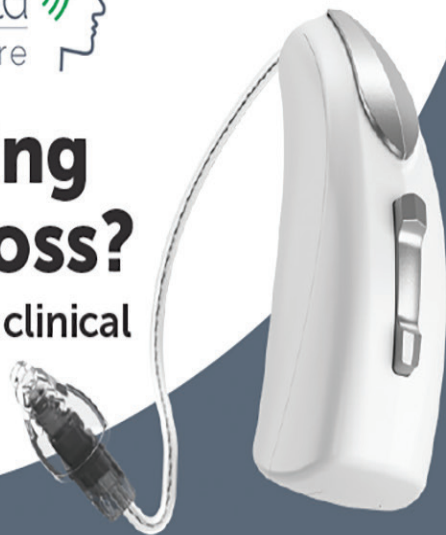
SEPTEMBER

- SUN 3rd MINIATURE TRAIN RIDES 1pm - 5pm - Model Engineering Exhibition and visiting locomotives running.** Abbeydale Road South. £2 per ride per person. Car park closes 5pm. See www.sheffieldmodelengineers.com
SAT 9th FRIENDS OF GILLFIELD WOOD Evening Bat Walk with Dave Gash. Meet at the end of Totley Hall Lane at a time to be announced on the website.
WED 13th TOTLEY PROBUS CLUB, 10am, Room 1, Totley Rise Methodist Church. Talk by Paul Williams on "The history of the Jensen Motor Company". Guests are always welcome - we are always looking for new members.
SAT 16th FRIENDS OF GILLFIELD WOOD Stall at Totley Show, Totley Primary School, from 1.30 to 3.30pm
SUN 17th MINIATURE TRAIN RIDES 1pm - 5pm - Abbeydale Road South. £2 per ride per person. Car park closes 5pm. See www.sheffieldmodelengineers.com
WED 20th DORE GARDEN CLUB Don Witton: The National Collection of GB. Don holds a Plant Heritage National Collection of hardy Euphorbia on his allotment at Harthill near Sheffield which featured on BBC's Gardeners' World. He will tell us what being a designated holder of a National Collection involves, and will bring a selection of euphorbias and other plants to purchase. Doors open at Dore Methodist Church at 7.10pm for a 7.30pm start. Visitors welcome, only £4 on the door.
WED 27th TOTLEY HISTORY GROUP, talk by Mary Garside, "Sheffield Hospitals during World War II". 7.30pm, Totley Library. Non-members welcome.
SAT 30th TOTLEY LITTER PICKING MORNING 10-11am. Equipment provided. This activity is done at participants' own risk. Children must be accompanied by an adult. Meet Baslow Rd, outside Totley Library. All welcome.
SAT 30th A CELEBRATION OF THE MUSIC OF THE BEATLES Live music from Redback and Cellar V. All Proceeds to Transport 17. 7.30 Christchurch Community Centre, Dore. Tickets £10 from Dore Club, Townhead Rd, Dore, and Transport 17, 172 Baslow Road.

If your organisation wants to publicise its events, or if you know about any local event, such as community markets or concerts, which you'd like to let people know about, please send details to Totley Independent (copy dates are on the back page or on our website at www.totleyindependent.co.uk) and we'll do our best to include the information on this Diary page!

Are you suffering from hearing loss?

Get in touch with your local clinical audiologist expert today!



Our Services
Hearing Tests
Tinnitus Treatment
Hearing Aids
Ear Cleaning

Bupa & CQC Registered

To book an appointment at our Dore clinic, or for further details:

0114 349 3326
hearingtherapy.co.uk
info@hearingtherapy.co.uk

ACTIV PHYSIO

Evening & Saturday appointments available

Call us on **0114 235 2727** to book now!



Say Goodbye to aches & pains and make an appointment with our team of friendly Physiotherapists at our **Totley Clinic**

- Back & Neck Pain
- Headaches
- Joint & Muscle pain
- Post Operative Rehabilitation
- Sports Injuries & Massage
- Women's Health Issues
- Acupuncture
- Home Visits & much more...

Open Monday - Saturday
5* Google rating

E: admin@activphysiotherapy.co.uk
W: www.activphysiotherapy.co.uk
A: 88, Baslow Rd, Totley, Sheffield.
S17 4DQ

Amie Nails

67 BASLOW ROAD, SHEFFIELD. S17 4DL

Bookings & walk ins are welcome
Vouchers are available

Opening hour : Mon- Sat : 9.30am - 6pm



A wide range of services are offered:

- Acrylics - Biab - Gel - Dipping
- Manicure - Pedicure
- Eyebrow wax and tin

"We are a spacious and modern nail bar. Our aim is to offer you the most trendy nails as well as the most comfortable and relaxing experience."



We are looking forward to welcoming all of you

☎ 07932 076 928

Instagram: @amienailbar

Facebook: Amie Nails Totley

Dore Optician

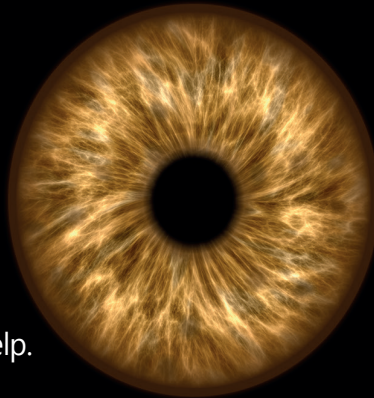
Ian Truelove BSc(Hons) MCOptom Family Optometrist
Personal and Professional eye care for all the family

Ian and Tina Truelove have refurbished Dore Optician with the very latest technology

➔ Hospital-quality 3D OCT imaging allows earlier detection and diagnosis of many eye problems.

➔ Free complete spectacles available for children and all eligible under the NHS.

➔ Home eye tests available if you are unable to leave the house without help.



➔ Digital retinal photography.

➔ ReadEZ: Coloured overlays and Enhanced reading assessments for those with reading difficulties or visual stress.

➔ Hundreds of frames to choose from for all the family, covering a wide range from £10 to designer.

➔ Free NHS and private eye examinations – hourly appointment slots, never feel rushed.

Please contact the practice for more information, or pop in for a chat.

25 Townhead Road, Dore, Sheffield, S17 3GD

Tel: 0114 3273737

Email: enquiries@dore-optician.co.uk

Web: dore-optician.co.uk



THE COLLEGE OF OPTOMETRISTS
MEMBER 2022

Providing NHS services and registered with the Association of Optometrists, College of Optometrists, General Optical Council



GWS

Technology Solutions



PC Problems, Repairs, Servicing, Setup No Job Too Small
Wireless & Internet Setup Apple Macs Data Transfer
New PC's, Laptops, Upgrades Tuition Safe PC Disposal
Tablets, iPads, iPhone, Setup & Tuition Smart TV, Media box
Wireless/Airprint printers Wireless/ Internet boosters

**** For All Your PC & Technology Needs ****

Guy Senior

Phone: 0114 2352662 Mobile: 07890030453

Email: guy@gwstech.co.uk

Web: www.gwstech.co.uk

GWS, 5 Conalan Avenue, Bradway, Sheffield S17 4PG

Brambles Landscapes

Fencing, Gates & Garden Bars Installed To Last

NEW for 2022: Licensed driveway moss & weed control



Established 12 Years All Installations Guaranteed 10 Years

Karl Nuttall-Allsop 23 South Street North S43 2AA

Text or Call for a quote **07720 845 326**

veryhelpfulman@yahoo.com

Editor: Phil Harris

Tel. 07956 858944 or email:
editor@totleyindependent.co.uk

Advertising: John Perkinson

Tel. 236 1601 or email:
advertising@totleyindependent.co.uk

Proof reader: Margaret Spencer

We welcome items submitted for publication, which may be left at or sent to 'Totley Independent', 2 Main Ave, Totley, Sheffield S17 4FG

www.totleyindependent.co.uk

Printed in the UK by
The Magazine Printing Company
using only paper from FSC/PEFC suppliers
www.magprint.co.uk

'Totley Independent' for October/November

The next issue of the Totley Independent will be published on

Saturday 30th October

COPY CLOSE DATE for this issue

will be

Saturday 9th September

Published by Totley Independent CIC. Totley Independent is a registered Community Interest Company, number 07750166. We welcome letters about local affairs and will publish as many as possible. Items will not be considered that are submitted anonymously. The views expressed are not necessarily those of the editor or the editorial staff and must not be attributed to them. © Totley Independent 2023