

# Totley Independent

Published continuously since 1977

[www.totleyindependent.co.uk](http://www.totleyindependent.co.uk)

October/November 2023

No. 424



*Totley Co-op - or rather, the Sheffield & Ecclesall Co-operative Society, Baslow Road, built in 1931*

## Roads and Phones

*Roger Hart writes:* My article in the last edition, 'Totley, Gateway to Pothole City', brought some reactions. One neighbour, Chris Blanksby, has also written to StreetsAhead, and another neighbour is suing the City Council for the defective state of the road, which was shown in the article, on Baslow Road at Lane Head, having broken his neck! Given the evidence, the Council has accepted liability.

But with regard to the spate of road closures and temporary traffic lights we've had recently, let's start with the works nearest to Beauchief Dam. The telephone exchange for much of S17 is close to the entrance to the Industrial Hamlet, which is where the first excavation was made, reducing the road from Beauchief to one lane. Subsequent excavations, some needing traffic light controls, were made, and some progressed from the Hamlet as far as Beauchief Gardens.

Here, I saw staff looking down a hole. Having been a council employee, it was

always fascinating to see what was happening down a hole! Five very helpful Openreach staff informed me that there had been a major cable fault, affecting dozens, if not hundreds, of customers, on landlines, though for some reason Broadband was not affected. They had been chasing the source of the damage, thought to have been caused by the severe storm which we had recently experienced. The old cable, possibly the original, was lead-covered, but each thin wire was covered in paper, as an insulation. The gang were waiting for the cable reel lorry to arrive with a new length of cable. Some customers received £150 compensation for loss of service.

Before this incident, temporary traffic lights were also located outside houses between Beauchief Gardens and the station car park. This was to enable a tanker to suck out dirty water, from the goit serving the dam, which comes under the railway from the River Sheaf, then to filter the water and send it into the sewage system, the (*continued p.3*)

### UKRAINE HUMANITARIAN APPEAL

**Apart from donating food, blankets and other essentials through local churches and other organisations, you can help by sending money to the Disasters Emergency Committee at any Post Office, or online at [DEC.org.uk](http://DEC.org.uk)**



Dental – Medical – Physiotherapy – Acupuncture



# HIGH TREES CLINIC

Specialist and Routine Private Dental and Medical Clinic located in Dore

NEW PATIENTS WELCOME

APPOINTMENTS FROM £50.00

We're here to help you monitor and optimise your health with our GP and Physical Therapists.  
Keeping track of your well-being should be an essential part of your self-care routine



## DENTAL

Routine Dental Appointments  
Restorative Treatment  
Fixed braces and Clear aligners  
Teeth Whitening  
Composite Bonding and Veneers  
Emergency Appointments



## MEDICAL THERAPIES

Medical Examinations  
Occupational Health and Travel  
Vaccinations  
Skin Lesion Check and Removal  
Medical Forms and Referrals  
Blood Tests & Analysis  
Facial Aesthetics



**Tel: 0114 349 3326**

37 Townhead Road, Dore, Sheffield, S17 3GD

hightreesclinic@gmail.com www.hightreesclinic.co.uk

Please call or email the clinic for further information or to schedule an appointment

# IRONING PARLOUR

01142 364073

DRY  
CLEANING

IRONING

REPAIRS

WASHING  
&  
DRYING

**SPECIAL OFFER**  
**DRY CLEANING**  
**20% OFF**  
**ON 4 OR MORE**  
**GARMENTS**

**SPECIAL OFFER**  
**CARPET CLEANER**  
**FOR HIRE**  
**£24.99**



**Established 2001**

**Serving the Community for 20 years**

**Call Lynne and Gail for all your laundry needs**

**IRONING  
PARLOUR**

**LOCAL  
COLLECTION  
&  
DELIVERY  
SERVICE**

## Roads and Phones (from p.1)

unpolluted silt being taken away for disposal.

Now we come to the A621, which is Abbeydale Road South up to the railway bridge, and then becomes Baslow Road. This was one of the first roads to be improved by Amey in 2012, when they got the 25 year contract to repair all the city's roads, verges, footpaths and trees. A fellow resident, Neil Bunting, and I attended public meetings and got to know the Directors. We almost worked with them!

But defects started to occur, particularly sunken ironworks, followed by depressions (such as where the front wheel of buses stop at Bushey Wood Road junction). We notified the relevant agencies, and still do, about defects on the highway. These defects have become more frequent, partly because of more HGVs (taking stone to the HS2 project), and also because of more private traffic heading to Derbyshire. Why the road is not classed as a trunk road is a question to be asked at a future Local Area Committee meeting!! Obviously, wear and tear is a factor, but the use of incorrect materials resulted in two corners being re-laid because of slip resistance failure.

General potholes have appeared, and though they have been filled, it has been with inadequate material, or faulty laying. A couple of years ago Chris Blanksby and I started notifying StreetsAhead (they are the council's point of contact with Amey, the main contractor) regarding the failure of the red anti-skid layer of material at Lane Head. The broken surface resulted in the accumulation of piles of detritus and grit, which would be unable to stop skidding, but able to break windscreens!

But Amey very seldom telephone, and if they do it's usually anonymously. Neither do StreetsAhead. They will issue a receipt for an email, sometimes using a reference number, but not specifying which defect I have notified, if more than one. Last May, I did get a call from someone from Amey, to ask me where the road sign had collapsed onto the Highway, as he had been to look for it and couldn't find it.

When I explained it to him, he laughed, saying the message he received sounded nothing like what he now knew was intended. Last May, he referred it, allegedly to his mate! The ruts have got worse, and there are more of them. Frequent notifications from Chris and I brought no solution, even though we included the Chair of Highways in our emails and stressed how dangerous the situation had become. My article in this magazine brought the sad news of the cyclist who skidded and sustained a broken collar bone. How he wasn't hit by a following vehicle is nothing short of a miracle.

And motorists who use Queen Victoria Road, Woodland Place and Prospect Road, cannot have missed the worn surface of the road, which has been repaired numerous times, each time being preceded by the yellow paint. Amey don't seem to recognise that the yellow paint does not last 12 months, before they come again, so, we get the pantomime script, "we have to do it again, then!" following complaints from users.

I have had various conversations with road users - pedestrians and motorists - regarding the condition and

safety of our roads, resulting in me asking the Local Area Committee for a public meeting with Councillors, StreetsAhead, Amey, and a Road Safety Officer to be in attendance. I will have put my case forward before you read this issue. Mind you, I did the same in 2012 when I asked for a pedestrian crossing at Mickley Lane. The reply was that not enough people have been killed yet! Honest! We did get Police Cameras though.

If we can get the public meeting, I'll be seeking your support!

## Music Makes Memories: Friendship Lunches

The Friendship Lunches at the Crosspool Tavern (2nd Monday), Ball Crookes (1st Tuesday), Shepley Spitfire (last Friday) and the Greystones (2nd Tuesday) continue to be a huge success. The monthly events, which comprise a delicious two-course lunch and live entertainment, are hugely enjoyable and offer a wonderful opportunity for older people to meet old/make new friends, to dine and to have a dance. They definitely give people something to look forward to, something to get dressed up for and being 'dementia friendly', offer invaluable respite for many families and carers.



Kathy Markwick, Freelance Community Consultant, who launched Friendship Lunches in South Yorkshire 7 years ago said 'I am delighted with the success of the events and grateful for the support of Age UK Sheffield, People Keeping Well, Sheffield City Council, Twelve Trees Care, Sheffcare and Norrie Waite Slater. The management teams at all the venues are extremely enthusiastic about their events as are the entertainers. For further info and/or to discuss hosting/sponsoring a Friendship Lunch please get in touch'. You can reach Kathy on 0772 9528844 or at [kathymarkwick@gmail.com](mailto:kathymarkwick@gmail.com)

Jo Woodward, Community Development Officer for Age UK Sheffield said 'the success of the Friendship lunches across the city speaks for itself. These lunches provide a vital lifeline for lonely and isolated people and provides an opportunity for them to build new friendships and support systems and enjoy some great music and a meal'.

### Very Helpful Licensed Waste Removal

We offer single item or part house clearance services

We collect for disposal/recycle sheds, garage or outbuilding contents

We also do single item removals or collections

We don't collect beds or sofas

**07720 845 326**

Text now for more details!

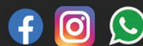
Karl Nuttall-Allsop 23 South Street North S43 2AA



recycle

E mail [veryhelpfulman@yahoo.com](mailto:veryhelpfulman@yahoo.com)

recycle



*Beth Storeham*  
— TILING —

07594863965

[bethanstoreham@gmail.com](mailto:bethanstoreham@gmail.com)

**Call now for a no obligation quote**

- Kitchens
- Splashbacks
- Bathrooms
- Floors
- Fire surrounds
- Repairs

*Proudly using more sustainable materials*



**CHARISMA  
BLINDS**

For  
Windows  
With Style

Sheffield Factory Showroom

106 PROSPECT ROAD  
HEELEY, SHEFFIELD

Sheffield (0114) 258 5496  
Rotherham (01709) 512113

# LIBERTY FOODS

Caterers  
Quality Meat Shop  
& Fresh Farm Produce

Fresh and Frozen Prepared Meals  
Fresh Meat and Poultry  
Outside Catering  
Home Delivery

253 Baslow Road, Sheffield, S17 4DU  
Tel: 0114 2360 583 Mobile: 07801 346 455  
Email: damianbower@liberty-foods.co.uk

## TrainwithSuzy

**Train with Suzy offers Personal Training Focused on Fitness, Fat loss and Toning. Based in Dore with own Gym. I offer private sessions individually tailored to your goals. Call to book your free consultation 07825-167411 www.trainwithsuzy.com**

## RICHARDS TELEVISION, SATELLITE, VCR, DVD REPAIR OR INSTALLATIONS

- City & Guilds London Inst. Fully Qualified
- Over 25 Years Professional Experience
- Most Makes & Models Repaired. No VAT
- For Prompt, Friendly Service Ring:

**0114 2876806**

Ask for Richard. Ex Bunker & Pratley

### Nutrition & Health Coaching

I am a Nutrition Coach specialising in Culinary Medicine.

I can help you if you:

- want to learn how to adjust your lifestyle and diet when you are diagnosed with a health condition;
- want to be leaner;
- want to have more energy;
- are trying to improve your sleep;
- are fed up feeling lethargic and had enough of your mood swings;
- want to take a look at your current diet and lifestyle and see where you could improve.



**Free discovery consultation**

**Diet and lifestyle audit  
6 week plan  
3 month package  
Ad-hoc consultations  
Cook-alongs  
Cookery workshops  
Meal plans**

**Sessions held via video calls or in person if preferred.**



### A recent feedback

"Thanks so much! I have lost 9.5lb, my hair stopped falling out and I actually have energy for the first time in years!! Thank you so much for your help, I just wanted to let you know just that change you advised me on has massively changed how I feel." (Amy B.)

### Viktoria Garbett

☎ 07756728479

✉ twiddlefood@gmail.co

🌐 www.twiddlefood.co.uk

📍 Sheffield



## All Saints Church

As I write this during another heatwave, with the excited sounds of children returning to Totley Primary just down the street, it's a joy to feel the energy of a new school year beginning. I've so enjoyed visiting the local primaries again recently, thinking about fresh starts and new beginnings.

By the time you read this, the Totley Show will have come and gone - always one of the highlights of our community's year as we celebrate Totley's creativity and hard work. It also began a term which is always busy for us at All Saints. In early October we'll hold our Harvest Festival, giving thanks for all God's gifts. And later in the month, look out for 'Streets of Light' - illuminated window displays around Totley. We'll share a website so you can plan walks to see the different designs. A fun, free activity for half term!

We know many are concerned about two issues. First, after years of work, you may well have seen that we've finally been able to extend the Memorial Garden at All Saints and we're excited to announce that the Bishop of Sheffield will consecrate the new area on November 4th at 1pm - please join us! Soon after we can begin interring ashes of loved ones. This has not been a quick journey, and our thoughts are with those have been waiting to bury loved ones.

Second, plans are underway with Sheffield Council regarding Remembrance Day. Arrangements are still uncertain, but we'll share updates on social media and our noticeboards in good time.

Finally, Christmas (I know its early and we'll send more info in the next edition but planning starts early)! Our community Christmas choir was brilliant last year. We hope to have another for the Carols by Candlelight on December 17th. No experience needed - just come to a few informal practices and sing! Email [music@allsaintstotley.church](mailto:music@allsaintstotley.church) to find out more

Rev'd Ben Tanner, Vicar

M: 07912890512

E: [ben@allsaintstotley.church](mailto:ben@allsaintstotley.church)

[www.allsaintstotley.church](http://www.allsaintstotley.church)

Totley Hall Lane, Sheffield | S174FA



## Totley Operatic and Dramatic Society (TOADS)

**November 2023 Play - Tons of Money**

Hello Readers!

I'm sitting here on an unseasonably warm September afternoon in the middle of a heatwave thinking how far away we are from the dark cold November nights which are only a couple of months away. It is difficult to believe how quickly the weather can change in such a short time. Perhaps we will be lucky and have a mild winter, I'm keeping my fingers and everything else crossed!

Even if the weather does turn wintry, as you know, there is nothing like a TOADS play to lift your spirits and I am here to tell you that we are working hard with rehearsals for our November production.

*Tons of Money* started out as one of the Aldwych Farces in the 1920s and was revived and updated by Alan Ayckbourn in 1986 for the National Theatre. It is a quick moving hilarious play and will hopefully delight you all with its craziness and humour.

Aubrey Allington is a failed inventor, who, along with his wife Louise, is submerged in debt. Luck would seem to be upon him when he gets news of an inheritance following the death of a relation. However, there is a sting in the tail of the gift:

should Aubrey die, whatever is left of the fortune will revert to his cousin George Maitland. Aubrey and Louise do not fancy the idea of having to use up all of the money paying their creditors and, believing George Maitland to be dead, come up with the superb idea that Aubrey should 'die', and come back as George Maitland, inherit the money and avoid paying his debts. Simple as this seems, in the best nature of farces, complications arise which will provide the audience with a night of great entertainment!

The evening performances of the play are Wednesday 15th November at 7.30pm to Friday 17th November at 7.30pm and the final performance will be a matinee on Saturday 18th November at 2.30pm. Tickets for the play are very reasonably priced at £7 per person with a concessionary rate of £6 for students and people aged over 65.

Please call Jeff on 0114 235 1206 to reserve your ticket, email [tickets@toads-drama.co.uk](mailto:tickets@toads-drama.co.uk) or contact any Toads member.

We all look forward to seeing you in November at the play which will take place at St John's Church Hall, Abbeydale Road South.

Deb Taylor



## Dore Garden Club

**Wednesday 18 October**

**Margaret Boulton: A History of Sheffield Allotments**

Margaret Boulton is an allotment gardener and author. Her illustrated talk will chart the history of allotments in Sheffield from the early industrialisation of the 18th and 19th centuries, through two world wars, the intervening unemployment in the 1930's and the growth of the suburbs, to the present day.

Doors open at Dore Methodist Church Hall at 7.10pm for a 7.30pm start. Visitors welcome - £4 at the door.

**Wednesday 15 November**

**Hilary Hutson: The Colours of the Garden**

Hilary Hutson is a local botanist with a passion for gardens, gardening and unusual plants particularly tropical plants, nurturing some with borderline hardiness in Sheffield. Her illustrated talk will consider how we see colour and the importance of colour to plants and how we can use it to best effect in our own gardens.

Doors open at Dore Methodist Church Hall at 7.10pm for a 7.30pm start. Visitors welcome: £4 at the door.

## Letter to the Editor

From Mrs Patricia Borland:

I enjoyed last issue's article about Totley Hall. However, there was no mention of Mr and Mrs Milner, who sponsored the building of the Church of England church we have now. The first baby to be christened here I believe was Jean Kirby and the second was my sister Jean Creswick.

## BRADWAY INSTALLATIONS

**Kitchens, Bathrooms and everything in between**

**Complete Kitchens** Installation or supply & installation

**Kitchen Refits** Replacement worktops/sink/hob etc

Worktop/cabinet repairs

**Bathrooms - Cloakrooms - Domestic plumbing**

**Tiling - Laminate/Vinyl flooring**

**All work undertaken is fully insured and guaranteed**

**Ring Peter - 0114 236 5995**

**Mobile - 07766 411355**



## Update from Olivia Blake MP

As summer draws to a close, I wanted to update you on what I have been up to over the past few months in Parliament and in Sheffield.

Firstly, after years of campaigning, I am overjoyed to announce that the Government has finally signaled their support for the end of the immoral "three miscarriage

rule", where women are only entitled to tests or support after their third consecutive miscarriage. This is a huge win and a testament to all those who have been campaigning on this for so long.

The Pregnancy Loss Review, which was published over the summer, includes a number of the recommendations we have been calling for, including the introduction of a graded model of care for women who experience multiple miscarriages, and 24/7 access to miscarriage care.

In response to the Independent Review, the Government committed to 20 short-term actions to improve miscarriage care, covering training, education, and public information. They have also committed to reviewing the clinical and financial requirements of implementing a graded model of care nationally.

These changes will make an unimaginable difference to the 1 in 5 women who will experience miscarriage in their lives.

Speaking about my miscarriage and the experiences of the hundreds of women who have been in touch hasn't been easy. I really didn't think it would take this long and there have been times when I've wanted to give up. Finally it all feels worth it. I want to thank everyone in Sheffield who has shared their experience with me and joined the campaign. Without you, this would not have been possible.

Over the last few months I have really enjoyed being able to visit a number of community groups, projects and local businesses in our constituency and speak to people across Totley.

I was pleased to visit Dore and Totley Station with Louise Haigh MP for an update on improvements to the station from Network Rail and their contractors. It was great to see the progress being made and hear about the difference the finished station will make to people across Hallam. I also visited an RSPB site to look at peatland restoration works and see the progress that had been made. It was brilliant to be able to plant some sphagnum moss myself!

Last month I met workers, volunteers and residents at St Luke's Hospice. I was absolutely blown away by the work they do to support people at the most difficult of times. I previously visited during the pandemic when they were unable to offer their day services, so it was great to see firsthand the service back up and running and the care of the staff and volunteers there.

In Parliament I have been continuing to campaign on school building disrepair. I spoke with BBC radio Sheffield about the issues affecting schools and how the government needs to ensure they are being as transparent as possible with parents. Earlier this month I spoke during a debate in Parliament and questioned officials on the Public Accounts Committee about the issue, calling for more funds for schools in Sheffield to ensure they are safe for all students and teachers. I will continue to work with schools in our constituency until action is taken to address this growing crisis.

Thank you for reading my update. As ever, if there is an issue you would like me to raise or project you would like me to visit, please do get in touch.

Olivia Blake - MP for Sheffield Hallam  
olivia.blake.mp@parliament.uk  
<https://www.oliviablake.org.uk/>

## Quiz: Musical Destinations!

1. Where would you be going if I took you on a Slow Boat?
2. Which hot, popular country did 'he rattled his maracas close to me'?
3. In the song 'Come fly with me, let's fly down to' where?
4. When we sing 'Here I come, right back where I started from' where are we going?
5. Frank Sinatra sang about 'A City that Never Sleeps.' Where?
6. What country are we in where 'That jolly jumbuck is sitting by a billabong'?
7. Elvis sang and acted in the film 'Blue -----'?
8. The Bee Gees thought they were going back to where?
9. In the USA there's a state where the river is known as 'Old Man River'. Where?
10. In the musical Oklahoma a song mentions which CITY where 'Everything is up to date'?
11. 'Take me back to the Black Hills, the Black Hills of' where?
12. Another state where the 'Moon is shining, shining on the one who waits for me'. Where?
13. Where was Gene Pitney only 24 hours from?
14. 'The Yellow Rose of -----' where?
15. In the musical Evita, Eva Peron sang about which country not crying for her?
16. In the song 'Polly Wolly Doodle' where was he off to, to see his 'Suzy-Anna'?
17. Freddie Mercury and Monserrat Cabelle sang a fabulous duo about where?
18. Where is it 'A long way to'?
19. In 1956 Patti Page 'Lost her Darling, the night they were playing the ----- Walz'.
20. Made famous by Laurel & Hardy, where were 'The Blue Ridge Mountains'?
21. In the song 'Chattanooga Choo-Choo' which station will the train be at, 'at a quarter to four'?
22. Tony Bennett left his heart where?
23. Adam Faith wanted what type of Bluebird to 'fly away and take a message to Martha'?

Answers on page 30!

Lorna Marshall

## Holmesfield Church Walking Group

### Great Longstone / Monsal walk 2023

On Wednesday 4th October at 10am Robin Greetham will lead a walk starting from the Crispin Inn, Great Longstone (de451tz). We will stop for coffee at Thornbridge Hall cafe. To start the walk we walk down to the trail then along the trail to near Monsal Head, then back via Little Longstone. The cost of the walk is £5 and the proceeds go to Holmesfield Church. If you wish to come, just turn up on the day. If you have any queries please phone Robin on 01246 412767. The walk is about 4 miles long with only a few stiles, and there is a short cut.



## Got a computer?

### Having Problems?

Is it running slow? Stops responding?  
Having problems running the latest games or applications? Broadband / WiFi problems?

### Give me a call!

I am available for home visits at any time including evenings and weekends. I can also suggest upgrades to improve performance, or even build you a system to your specific requirements.

### Tim Brown

Building,  
Installation,  
Upgrading and  
Troubleshooting

Computer  
Systems

Over 30 years'  
Professional  
Experience

Phone: 0114 247 2619

Mobile: 078 1746 4703

Email:

service@timbrownplus.co.uk

## How Long's the Next Train?

It looks likely that most railway ticket offices will soon be history. Let me tell you what it was like working in them 60 years ago. In 1962 I joined British Railways, as the adverts put it to 'do a Man's job in a vital industry' (note that capital letter). I started at Southall's booking office, a London suburban station 9 miles from Paddington with a lot of commuter traffic. This was part of my railway management training. Between 5 and 9am on weekdays there were 32 trains in both directions to book. There was no technology, simply gravity-fed printed cardboard tickets in racks for the most popular destinations. Each needed to be dated using the metal date press with its lead type changed every day and an inked ribbon - single tickets stamped at one end and return tickets at both. Monday mornings brought the added work of issuing weekly, monthly and quarterly season tickets. Women passengers had an inky 'W' stamped on their non-transferable season tickets to stop them being handed over and used by men (known in the trade as 'putting the knickers on!') Men's season tickets didn't have a 'W', but woe betide any woman trying to use one.....



Southall Station Booking Office

The office was an all-male, grimy place in an 1877 station building on a bridge over the tracks. Heat was provided by a coal stove. In the draughty entrance, there were three booking windows, all of which might be needed on a busy Monday morning. On most days we could manage with one. At top speed, commuters' tickets could be issued and change given at the rate of seven or eight passengers a minute. A damp sponge helped our fingers to get the tickets out of the rack quickly, and a practised flick saw a return ticket dated at both ends in a flash.

Banknotes went into a partitioned tin on the counter. Coins were kept as far as possible in rows of their denominations. There was pride in not building up a queue. We didn't want to see last-minute commuters miss their trains. The station entrance was uphill from all directions, and passengers appeared at the window breathless, red-faced or half asleep. 'Quick, I don't want to miss it', 'Return to Southall' - 'You ARE at Southall' says I. On one occasion I was asked for the *Daily Express* and ten Woodbines.

We also booked people's summer holiday travel, mainly to the West Country. Summer was a chance to open the heavily-smoked windows over the main line to admit what passed for fresh air. Instead, we got smoke, steam and diesel fumes from passing trains and tarry smells from the hot wooden sleepers below. Most people tended to holiday at the end of July into August. Regular station users had probably been encouraged to become holidaymakers by the garish station posters of bathing belles at sunlit resorts. Destination names were somehow far more poetic before the days of Parkways and Interchanges. Those lucky enough to have a train with a restaurant car could enjoy a full breakfast for 8/6d, lunch for 12/6d and afternoon tea for 3/6d. If you were on the train for long enough or late enough, the Table d'hote dinner could be taken for 13/6d. If such lavish hospitality wasn't available,

for 2/6d the packed meal of a sausage roll, cheese sandwich, 'Jolyroll' individual Swiss roll and fruit was available from the Paddington refreshment room. A more exotic version of the packed meal was available for 3/6d. We also issued tickets for accompanied dogs, bikes or prams, and we were also able to book seat reservations and ferry tickets to Ireland. Timetable books were used to answer enquiries about complicated journeys.

'Booking up', the daily tallying of tickets sold, took place in quieter periods. There was a printed book for the purpose. Ticket racks showed the destination and price for each row and had a narrow strip of slate. If a ticket was wedged vertically, then there had been no issues that day. If there was a ticket sticking out then tickets had been issued. The last two digits of each ticket were written on the slate with a slate pencil. Numbers on the slate were changed using a damp finger. The numbers of all issued tickets were written in the printed book, so deducting the previous entry from the latest number gave you the number of issues. These multiplied by the price gave you the amount of cash you should have received. The day's banknotes, cheques and vouchers were placed into a canvas bag sealed with red sealing wax and put in a leather pouch with a brass plate with our station name. This was taken for a particular train to Paddington which had a travelling safe in the guard's van. The bag was posted in the safe and that was it until the next day.

In the event, my colour vision wasn't anywhere near good enough for any part of railway management that involved operations, so I took my defective colour vision elsewhere. But it was valuable experience booking the travelling public and getting to understand the best and worst of human nature on the move. 'Pro bono publico' - it said on the tongue-in-cheek handwritten card pinned on the office wall. Isn't a pity that such a service for the public good looks set to disappear?

So, what about the answer to 'How long's the next train?' On the basis that you can call anybody anything as long as you're smiling while you do it, the answer goes, 'Well, it's got six coaches at 60 feet each, then the engine is 47 feet so it's about 407 feet or 135 yards.'

Mike Peart

Totley History Group presents

**The History of Water**  
by Dr Jenny Stephenson

**WEDNESDAY 25 October 2023**  
**7.30PM IN TOTLEY LIBRARY**  
**NON-MEMBERS ARE WELCOME**

# Oven Wizards®

*We clean your oven...so you don't have to*

Call today to have your oven, hob, extractor or Aga professionally cleaned by Pippa Weir! Pippa's contact details are:  
**Tel 0114 258 3466 or mobile tel. 07716 992648**  
**www.ovenwizards.com**

## Brambles Landscapes

Fencing, Gates & Garden Bars Installed To Last

NEW for 2022: Licensed driveway moss & weed control



**Established 12 Years** All Installations Guaranteed 10 Years

Karl Nuttall-Allsop 23 South Street North S43 2AA

**Text or Call for a quote 07720 845 326**

veryhelpfulman@yahoo.com



## Scrivens Quality Greengrocer

Free delivery service available 6 days per week

Mark Billingsley - Owner 37 Baslow Road  
 Home Delivery - 0114 2367116 Sheffield S17 3DL  
 Trade Enquiries - 07885 866376 scrivensyou@gmail.com



**GRANT'S  
CLEANING  
SOLUTIONS**

**Window Cleaning & Gutter Cleaning**

**Please Contact Benjamin Grant For A Free Quote:**

Tel: 07780432717

Email: [info@grantscleaningsolutions.com](mailto:info@grantscleaningsolutions.com)

Web: [Grantscleaningsolutions.com](http://Grantscleaningsolutions.com)



## Twelve Trees

*Always there to care*

**FAMILY RUN, AWARD WINNING, PREMIUM HOMECARE SERVICE**

Twelve Trees is an innovative Homecare provider operating from our offices in Nether Edge. We offer something unique to our clients by providing bespoke care packages designed to meet your care needs. We are proud to have been providing care for the elderly for over 25 years.

### WE PROVIDE

Household & Domestic  
 Companionship  
 Personal Care  
 Mobility Care  
 Respite  
 Specialist Care  
 Day Care  
 Overnight Care  
 Hospital Discharge  
 Transport Service

### MEALS ON WHEELS

We offer nutritious and delicious home-cooked meals freshly prepared at our award winning residential care home, delivered to your door with a 30 minute care call.

### CONTACT US

Twelve Trees Homecare Limited,  
 Suite 9, Cherry Tree Business Centre,  
 Sheffield, S11 9EF  
 Email: [admin@twelvetreescare.co.uk](mailto:admin@twelvetreescare.co.uk)

0114 349 7837  
[www.twelvetreescare.co.uk](http://www.twelvetreescare.co.uk)





# What's on at Totley Library



## Ready Set Read 2023 Challenge

Many family groups came into the Library following our publicity and visits to local schools. Over the first few weeks 268 children were registered and 60 children got their first Library card. They were asked to borrow and read six books over the summer. On completion they received a certificate, medal and a free book from our sales shelf. We are pleased to say that the Challenge has been a great success!

Our summer has been busy and we are now planning events for the autumn. By the time this is published we will have had our annual AGM in September. The annual report is available to review on the Charity Commission website and also on the library website so please do take time to read it if you can. All ideas and suggestions for the use of the library are always welcome!

The library has a cupboard full of games, pictured below, which can be used by the community in library opening hours. If there is enough interest we could consider a regular games evening!



On 13th October we will be having a Folk Music night which is already almost sold out! On the 19th October we will be having a CPR training evening led by Consultant Anaesthetist Dr Ian Paterson. We will have a video presentation and we have manekins which can be used for practice along with practice using a defibrillator.

## Current Library Opening Hours

Mondays 1pm - 7pm  
Tuesdays and Wednesdays 10am - 5pm  
Fridays and Saturdays 10am - 1pm

## Totley Library Community Art Space: Original Art and Prints for Sale

Reduced price original art by Anne Atkinson (see photo left) is now on display in the adult library. Why not have a look and see if one would brighten up a wall in your home? Pictures by John Wells, Lucy Swinden and Gina Hodges are also on display and available for sale.



All art works are exhibited for a period of three to six months, free of charge, and are available for sale at a price set by the artists. Totley Library takes a commission (20%) on each picture sold to support the on-going running costs of the library.

We are looking for local artists who would like to be involved in this community initiative and exhibit in January 2024. For further information, please call in at Totley Library and take a look at the Art Space or email [carolynjallcroft@gmail.com](mailto:carolynjallcroft@gmail.com).

## Story Time is back!

Come along to our Story Time session in the Children's Library, on Wednesday mornings from 10am to 11.30am, when children can listen to a story and take part in a related craft activity.

We look forward to welcoming new children and parents as well as our returning children and parents/carers.

There is no booking required, and we ask for a £1.00 card or cash donation on the day. Can't wait to see you all!

## Totley Library Cinema

Our cinema programme at Totley Library is available for booking in person or by calling 0114 236 3971. Refreshments will be served at all these films. Raffle tickets: £3 per adult and £1.50 per child. Thursday matinee films are free for over-65s.

The cinema will be showing *Aftersun* on the evening of Friday October 20th, and *Hallelujah* on the afternoon of Thursday 26th October.

For more details of films to be shown, please see posters in the library or visit our website at [www.totleycric.org.uk](http://www.totleycric.org.uk)

## Library Lottery Winners

In the July draw, first-prize winner was Susan Facer, and Christine Clowes won second prize. First prize in the August draw was won by Christopher Jones, and second prize by Jean Leeson.

## New Book Additions

We have plenty of lovely adult titles and children's books from well-known authors! Don't forget - you can make a book recommendation online at our website or email us.

## Regular events and meetings at Totley Library

### Monday:

**French lessons for children** following the award winning course material from La Jolie Ronde. After-school classes are available for children in the children's library 3.40pm - Y5/Y6; 4.10pm - Y3/Y4; 4.40pm - Y1/Y2 5.30pm - Y4/Y5

Contact Joanna on 07854 148809 or email [speaquesheffield@gmail.com](mailto:speaquesheffield@gmail.com) to find out more about local availability for French language classes.

**Friends of Gillfield Wood**, occasional Mondays, 7.30pm onwards. Talks on local nature and conservation. See posters, the FoGW article in this issue, or [www.friendsofgillfieldwood.com](http://www.friendsofgillfieldwood.com)

**Councillors' Surgery**, 2nd Monday of the month, 6-7pm

### Tuesday:

**Baby Time** 1.30-2.15pm (term times only). Come along to meet other parents/carers and babies. We sing simple songs, have fun and allow time to chat.

**Poetry Group**, first Tuesday in month, 7.00 - 9.00pm. *Please note that this group cannot accept new members at present.*

**Friends of Dore and Totley Station** Occasional Tuesdays, 7.30pm. See [www.FODATS.net](http://www.FODATS.net)

### Wednesday:

**Coffee Morning**, 10.30 - 12noon

**Story Time** for toddlers and pre-school children from 10am - 11.30am (except school holidays). Children can take part in weekly themed craft activities, sing songs and listen to a story. £1 donation per child greatly appreciated.

**Health Walks**, 10.30am, meet at Library. Contact Step Out Sheffield on 07505 639524 or email [stepoutsheffield@gmail.com](mailto:stepoutsheffield@gmail.com)

**Totley History Group**, usually last Wednesday of the month, 7.30. Talks on matters of historical interest. Check posters, the *Totley Independent Diary*, or [www.totleyhistorygroup.org.uk](http://www.totleyhistorygroup.org.uk)

**Yoga sessions** 7.00 - 8.30pm, Wednesdays (except the last Wednesday of the month). For more details call Ann Zielonka on 0114 2361585 or 07929 736966. Beginners welcome. You are advised to call Ann to check that the sessions are taking place.

### Thursday:

**Thursday Morning Natter** 10.30 - 11.30. Hot drinks and good company - for people aged 60 or over.

**Chair Aerobics with Kay** 12noon for 45-60 minutes. An Age UK and People Keeping Well weekly exercise class. £3 per week - no need to pre-book, just turn up.

**Reading Club 2** meets in the library on the third Thursday of each month between 1.30 and 3pm. If you are interested in coming along please email Dawn Rich at [dawn@ilmd.biz](mailto:dawn@ilmd.biz)

### Saturday:

**Regular second-hand book sales.** Check CRIC website: <http://www.totleycric.org.uk/>



# Totley Pharmacy

**Your local independent pharmacy  
serving you for 26 years.**

# 24/7

## prescription collection

**Call: 0114 236 1070**

## Dore Gilbert & Sullivan Society

I hope you have all had a decent summer despite the July and August weather. At least the start of September has helped. Our Whittington concert went off very well and we are looking to the concert we are to give at Bolsover Assembly Hall on Hill Top at 7.30pm on Saturday October 21st. We have now fixed the date for our Christmas concert at Dore Methodist Church. This will be at the usual time of 2.30pm on Saturday 16th December. Tickets (£10) will be available from about the time this edition is published, by phone on 07565 805405 or via the web at <https://doregass.weebly.com/tickets.html> and as this is usually a very popular event I suggest you don't leave it too long before buying your tickets.

We have had confirmation that the Montgomery Theatre is closing for some time to enable refurbishments to happen and we have not been successful in finding an alternative theatre for our show, so the intention is to put on concert performances of *Iolanthe* in various venues. How many venues, and where, are yet to be confirmed but I hope we'll do at least one in the Dore area and others in those places that seem to becoming regular locations like Whittington and Bolsover; these, however, are just my views! There are some cracking songs in *Iolanthe* including the famous *Peers Chorus* (even Dore Male Voice Choir has it in their repertoire).

I am pleased to say I can now see clearly out of one eye having had one cataract operation. I was amazed at how little time the actual operation took. I bet I was only 5 minutes on the operating bed. The preamble and preparation took far longer than I had expected. I can report that it is an operation not to be feared. A little discomfort for maybe 30 seconds and the rest is just slightly strange but nothing to worry about. I await an appointment for the second eye, hopefully sometime in October.

Don't forget the Christmas concert and watch this space for further news of *Iolanthe* performance news.

Derek Habberjam



## Totley Primary School

### Welcome Back to School!

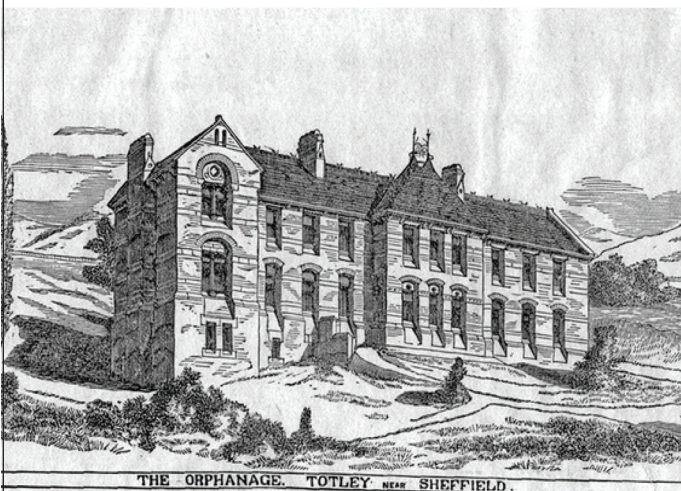
The new school year at Totley Primary has started in a blaze of early autumn sunshine and it has been delightful to welcome our children back to their new classes, as well as saying a special hello to our wonderful Reception starters and their families.

A lot has been happening on the school site over the summer holiday. There have been upgrades to the Y2 quad and the Foundation Stage outdoor area along with new flooring throughout the older part of school.



You may also have seen the new school signs as you have driven down Baslow Road, which shows our new school logo (above). All of these improvements help us to maintain the

### Totley History Group presents Cherrytree Orphanage by Hilary Widdowson



**WEDNESDAY 22 November 2023**  
**7.30PM IN TOTLEY LIBRARY**  
**NON-MEMBERS ARE WELCOME**



best possible learning environment for the children and ensure that all within the school community can be proud of the building!



By the time you read this, the Totley Show will have taken place – we are thrilled that this community institution continues to be a popular event for local residents of all ages. Many thanks to those who were able to come along and support on the day, as well as to the committee for all of their efforts!

Ben Paxman. Head Teacher

## Totley's Original Road

As 2023 is the year when Totley Hall celebrates its 400th birthday I thought it would be interesting to trace the background to some of the older buildings we can still see along Totley Hall Lane and Hillfoot Road, a section of the ancient track that led from Holmesfield to Dore and beyond, and where the hamlet of Totley developed over many centuries. Recorded in the Domesday survey of 1086 'Totingelei' was an area of pasturable woodland and waste covering approximately 50 acres, with cultivated land for 'one oxen'. Valued at XII pence. Not very promising!

Josie Dunsmore's recently published book *The Story of Totley Hall and its Owners* gives a comprehensive history of this building that sits at the far end of Totley Hall Lane, facing south eastwards towards Holmesfield, Dronfield and Chesterfield. I'll leave the telling of its story to Josie.

Understandably there isn't a strict chronological order for the buildings along the road, but dates will be included where known. The Hall began life as a small farmhouse, so naturally there would be farm buildings. Totley Hall Farm, which as recently as 2020 was occupied and functioning as such, was latterly owned and let by Sheffield Council. The buildings have now been sold and repurposed for residential use.

In 1883 William Milner, the then owner of the Hall, built a lodge on the opposite side of the lane, occupied for many years by his butler. It still stands solidly, but looks ready for a facelift.

The old school building opened in 1827. D'Ewes Coke, the incumbent in the Hall at that time, funded its construction and this is acknowledged on a (replacement) plaque above the front window. It served Totley until the school moved into larger premises on Hillfoot Rd in 1883 when the number of village children needing to attend had outgrown the small building. Compulsory education for 5-13 year olds was introduced in 1870.



*The 1877 Church School from Butts Hill*

Following the death in WWI of William Milner's son Roy, the family donated land and £2000 in his memory towards the building of All Saints Church of England Church. Totley had just been granted its own parish after historically always



*Postman outside the Post Office at 1, Hilltop Road*

being linked with Dore. The population was growing and at that time numbered approximately 1000.

The 1892 Ordnance Survey map indicates that the original Post Office for the village was situated in a cottage on the west side of the road (now demolished). It later moved to the top of Hillfoot Rd before settling for many years on the lower corner of Totley Hall Lane.

The Fleur de Lys, whose frontage was the location for a monthly livestock market, was a modest alehouse on the upper corner of Totley Hall Lane. The original low and lowly



*The Fleur de Lys showing space for the livestock market*

establishment was replaced by a large mock Tudor building in 1933 when increasing car ownership encouraged people to motor out into the countryside for refreshment. No drink and driving laws then! The building has now been preserved by repurposing it as apartments.

We then cross Baslow Rd to Hillfoot Road. The former would have been just a track until 1820 when the turnpike from Sharrow to Bakewell was completed and a stagecoach service inaugurated. The old village cross is believed to have been in this area, with speculation that a block of stone at the base of the boundary wall of Cross Grove House might have been the exact location. Watch for the traffic if you go searching for it!

The Cross Scythes Inn was originally a farmhouse and the completion of the turnpike road created a perfect opportunity for Samuel Hopkinson, farmer and scythe smith, to develop a watering and resting place for the hard-worked horses travelling between Sheffield and Bakewell. Refreshment for the human cargo as well!

Summer Lane (on the west side) is thought to have been the route used by the canons of Beauchief Abbey to lead their sheep to the summer pastures at Strawberry Lee. Now lined largely by modern housing, Victorian terraced cottages were the original buildings here, with only one or two now remaining. This area formed the shopping hub of the village, including grocers, general stores, Post Office, as well as cottages where the local home industry of file cutting sustained many households.



*General stores on the corner of Summer Lane*

Edward Turner (1817-1880) a cordwainer (shoemaker) lived at the junction of Chapel Lane, and more than one dressmaker lived in the village. This was a largely self-contained community living in the randomly built cottages of the area, many dating from the 18th century.

A range of occupations is to be found in the census returns of the 19th century but agricultural work, scythe manufacture and file cutting predominate. Service occupations are also in abundance: gardeners, maids, cooks, shopkeepers, servants etc.

Before the road bends and falls steeply to the Old Hay Brook we pass the 1883 Church school, now swallowed by its various extensions, and the track to the deconsecrated Wesleyan Chapel, now another home. The pinfold alongside the school entrance is one of two that Totley needed, a place for stray animals to be impounded as they waited to be returned to their owners, but only after the pinder had been paid his due.

High to the east side of the road is Butts Hill, and overlooking the valley is Cannon Hall, a Grade II listed, cruck built, 15th century farmhouse. It would have been witness to much activity around 1890 as the navvies built the Totley tunnel - the entrance is below the rear of the building.

A field drops steeply to Penny Lane before reaching the last building on the west side of Hillfoot Rd, the Crown. This field was used to help sick horses recover their strength, having a multitude of beneficial herbs growing in the grass. So much land in the valley had been contaminated by lead particles blown downwind during the smelting activities of past centuries, but this field was protected by being just out of the line of the prevailing winds.

The Crown, now over 300 years old, is the only remaining building where there was once a small hamlet of cottages, stabling and a smithy, ready to re-shoe a horse or mend a wagon wheel as travellers passed on their way.

The last dwelling on the east side is Grove House, circa 1850, lived in by engineer Percy Rickard during the building of the Totley tunnel. Needham's Dyke, the small stream running through its grounds, sadly brought typhoid from the navvies' camp to the house, from which Rickard died shortly before the completed tunnel was officially opened.

The boundary with Dore is the Old Hay Brook, once forded, but the building of a bridge 250 years ago made the crossing easier. Walk down the footpath alongside the Brook and look back to see changes in the stonework that indicate how the bridge's parapet wall has been raised over the years. The path leads to the industrial heartland of 15th-19th century Totley, where lead was smelted, corn ground, and scythes forged and sharpened....but that's another story.

Pauline Burnett

## Dore and Totley United Reformed Church

Totley Brook Road, S17 3QS

### Wednesday coffee and craft

On Wednesday mornings a few of us meet to chat and knit or crochet from 10.30 until 12. We have knitted hats for shoeboxes, made twiddle muffs for people with dementia and are now making small animals to add to Link to Hope shoeboxes. We'd love to have a few more people to chat to! On the first Wednesday of each month the Carers' Cafe runs alongside our craft group. A midweek service is at 11.30am usually lasting 30 minutes for anyone who needs some time for reflection and prayer.

### Harvest celebrations

Our Harvest service will be informal cafe style on October 8th at 10.30am. We will be collecting non-perishable goods for the Cathedral Archer Project. The worship will be followed by a simple soup lunch. All welcome!

### Grand jigsaw sale

After the success of last year's sale we are now collecting brand new or very good quality complete jigsaw puzzles for our next sale on October 21st (note the change of date). We

will be open from 10am to 1pm, with refreshments available. More details on the poster advert.

### Journey of the Magi

Looking ahead to Advent we are excited that the Springs Dance Company will be putting on Journey of the Magi on Sunday 10th December at 4pm. This will be a show for all ages featuring songs, sparkle and humour to share the joy and wonder of Christmas. The Springs Dance Company is a national touring company. More details will be advertised locally.

Elaine Ferguson  
07929720977



Friends of  
Gillfield Wood

## Friends of Gillfield Wood

Diary for October - November 2023

**Monday 2nd October** 10 Year Celebration and Open Evening. 7.30, Totley Library. Invitation to all members and guests to share in deciding the future activities of FOGW.

**Sunday 8th October** Mammal trapping with Val Clinging (Sorby Natural History Society). Meet 8.30, Totley Hall Lane entrance, to take part in the opening of the traps.

**Saturday 28th October** 8.30 Bird walk. Meet Totley Hall Lane entrance. Led by Stuart Davies.

**Saturday 11th November** Fungi Survey with Ziggy Senkans. Joint event with Sorby Natural History Society. Start 10.30am at Totley Hall Lane entrance. Participation in the full survey could take 4-5 hours so suitable footwear and a packed lunch is recommended.

## TOTLEY RISE METHODIST CHURCH



Archer Project  
Coffee Morning & Donations  
Drop off

7th October  
10am-12pm



### Suggested Items

- Canned Food ✓
- Dried Food ✓
- Toiletries ✓
- Hats,/Scaves/Gloves ✓
- Warm Clothes ✓

Come and join us for coffee and cake when you drop off your donations to the Archer Project



1 Grove Road, Totley  
Sheffield S17 4DJ

We Accept Unexpired  
Foods Only



## Totley History Group

In July a small group of members enjoyed an interesting visit to Northern General Hospital, where Mary Garside guided us through the old buildings, now tucked between the greatly extended

and modernised hospital that began its existence as Fir Vale Workhouse in 1878.

Mary helps to curate a small museum of medical artifacts, showing us how attitudes and skills have altered so radically. On display was pioneering equipment of the 19th century through to the early days of the NHS, accompanied by many photographs of those times.

In September Mary returned as our speaker to talk about the role of Sheffield's Hospitals in WW2.

### Autumn programme

October 25th Dr. Jenny Stephenson, 'The History of Water'

November 22nd Hilary Widdowson, 'Cherrytree Orphanage'

Advance notice: December 18th and 19th: Sheffield Folk Chorale Spitewinter Concert - seasonal songs from across the centuries at Ecclesall Parish church

All meetings, excepting December, are on Wednesday evenings at Totley Library at 7.30pm.

Contact details: paulineburnett17@gmail.com

Pauline Burnett



## Chapel of Ease, English Martyrs in Totley

**Mass Times: Tuesday 10 am, Saturday Vigil 5pm**

It's hard to believe that September is already upon us, especially as warm weather has made an appearance now that teachers and children are returning to school!

We've just enjoyed the bright, large 'blue' moon of August and are looking forward to the 'harvest' moon on Friday 29th September.

Every year, at this time, Christians are reminded to thank God for CREATION.

Pope Francis tells us that we are the guardians and protectors of our planet, built for all life to enjoy.

If the planet is to continue to feed and support the next generations, we must endeavour to leave the land, sea and air in a better state than when we inherited it.

At English Martyrs we are holding a Harvest Mass on Saturday 30th September and I have been scouring the hedgerows for God's bounty.

In just two weeks I have been given apples and plums and found blackberries, blackcurrants and elderberries, which together with the 42 sloes growing on my blackthorn bushes, will be preserved in jams, jellies, cordials & GIN!!

SAINTS PRESERVE US! GOD IS GOOD

Look out for signs and posters about our Christmas, Coffee, Cakes & Crafts Event on Tuesday 28th November

Barbara Richardson Parishioner

## TOTLEY RISE METHODIST CHURCH

# LIGHT PARTY

**OCTOBER 31ST 6-7.30 PM**



**Come and have fun with us for a Light party - an alternative to the dark of Halloween. Come and join us for Games, Crafts, Food & Singing. We have 30 free tickets for primary school children and each child must be accompanied by an adult.**

### Book Tickets in Advance

<https://www.eventbrite.co.uk/e/totley-rise-methodist-light-party-tickets-708555407297>



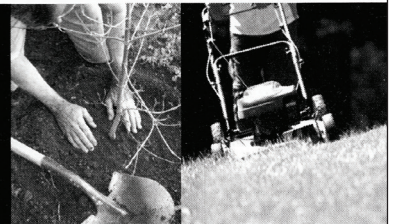
[www.totleyrise.co.uk](http://www.totleyrise.co.uk)

1 Grove Road, Totley Sheffield S17 4DT

# Tristan Swain

Garden Services and Maintenance  
Established 1984

Unit C4 Sheaf Bank Business Park  
Prospect Road Heeley  
Sheffield S2 3EN  
Tel/Fax: 0114 255 4689  
Mobile: 07831 802 539  
Email: [tristan@tristanswain.co.uk](mailto:tristan@tristanswain.co.uk)



[www.tristanswain.co.uk](http://www.tristanswain.co.uk) Public Liability Insurance Waste Transfer Licence

John Collins

## Cabinetmaker

Fine furniture, antique furniture restoration, fitted wardrobes, alcove units

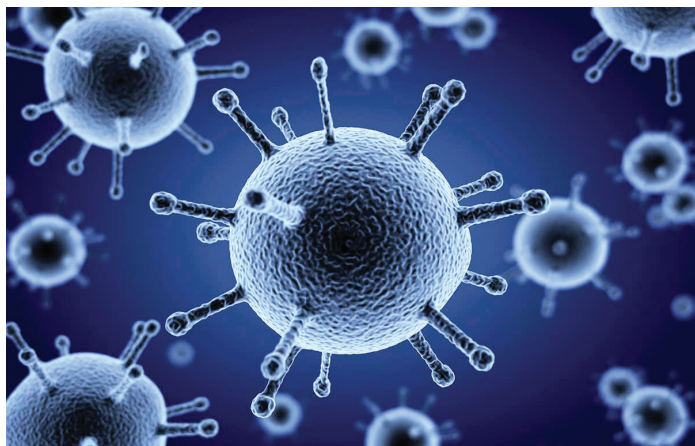
0114 2585355

[www.cabinetmakercollins.com](http://www.cabinetmakercollins.com)

## Ask Your Pharmacist

### Unlocking the Benefits of NHS Pharmacy Services: Flu Vaccines, Minor Ailments, and More!

I'm writing this sweltering in the heat on the hottest day of the year – in September! However, the autumn breeze will soon usher in the flu season. The drive for Covid vaccines over the past few years has shown the value of successful vaccination programmes. While flu death figures have not recently been as scary as the Covid figures became, flu is still a killer, so it is important to ensure sufficient people are vaccinated. By receiving the flu vaccine, you not only safeguard yourself but also contribute to reducing the spread of flu within your community. Of course, you will also help to protect vulnerable relatives or friends.



Despite the importance of this service, the Department of Health has made a bit of a pig's ear of it this year. They have caused considerable confusion, flip-flopping a couple of times with the start date being changed from the usual time of the beginning of September. By the time you read this though, our service will be in full swing.

We are sometimes asked by patients if our flu vaccines are free. As we are part of the NHS service, we do indeed provide free vaccines to all eligible patients. In another change from recent years, the service has also excluded non high-risk patients.

You are still eligible if -

- you are 65 and over
- you have a long-term health condition (such as breathing or heart conditions)
- you are pregnant

If you are unsure if you qualify for a free vaccine, feel free to pop in and see us. We can check for you. If you are not in the above groups, we provide paid vaccinations too. With the convenience of our service, you do not need to book an appointment: feel free to simply pop in, and we will provide the vaccine in a couple of minutes. If you would like to arrange a specific appointment to suit you, pop in to see us or even easier is to book on our website [toleypharmacy.co.uk](http://toleypharmacy.co.uk)

The DoH has again decided not to roll out the Covid vaccination service to all pharmacies, so we are not able to provide these to our patients. For information on Covid vaccines, contact your GP surgery.

Vaccination programmes provide enormous benefits to the nation's health on the basis of prevention being better than cure. The NHS has applied this principle to another huge killer – cardiac disease. High blood pressure is a silent condition that affects millions of people. To combat this, the NHS has asked pharmacies to provide free blood pressure checks to identify people who have undiagnosed hypertension. We have been offering this service for a year now, and have helped diagnose blood pressure for many patients. Of course, this helps improve their lives and prevent serious health problems. Alternatively, the service also allows a lot of people peace of mind that they do not suffer from this condition. Knowledge is power, and by staying informed, you can take proactive steps to manage your blood pressure and reduce the risk of associated health problems.

Another valuable free service from the NHS is the Minor Ailments scheme. Have you ever experienced a minor ailment

that left you searching for quick relief? Look no further than your local pharmacy! We can provide support and treatment for a range of common ailments. From coughs and colds to skin conditions and allergies, our team are trained to offer advice and supply a suitable medication. If necessary, we will refer you to a healthcare professional. As this is a free service, please maximise the benefit of it. As well as saving yourself money, you will also help the NHS and your doctor by freeing up an appointment for someone with a more serious illness. It is also extremely useful at a time when GPs are really stretched and A & E departments are full – our service is available during opening hours without an appointment.

While the flu vaccine provides vital protection against influenza, it's equally important to adopt healthy habits to prevent colds. A strong immune system is your best defence! Incorporating a balanced diet rich in vitamins and minerals, such as vitamin C and zinc, can strengthen your immune response. In addition to a nutritious diet, certain supplements can provide an extra boost to your immune system. Vitamin D, known as the sunshine vitamin, plays a crucial role in supporting immune function. During the winter months when sunlight is limited, taking vitamin D supplements can help ensure you're getting an adequate amount. However, it's always advisable to consult with your pharmacist or healthcare professional before starting any new supplements. Additionally, staying hydrated, getting enough sleep, and practicing good hygiene, like regular handwashing, can help fend off cold-causing viruses.



Maintaining a Healthy Heart: A healthy heart is the foundation of overall well-being. Alongside regular exercise and a balanced diet, there are other steps you can take to keep your heart in top shape. Quitting smoking, managing stress levels, and maintaining a healthy weight are all key factors in maintaining heart health. Additionally, including heart-healthy foods such as fruits, vegetables, whole grains, and lean proteins in your diet can significantly benefit your cardiovascular system.

Hopefully, with all these free NHS services, and advising you on healthy living advice for preventing colds and maintaining a healthy heart, we can help you take charge of your health this winter. Remember, we are always ready to assist you on your journey towards optimal health!

Tajinder Singh



# GWS

Technology Solutions



PC Problems, Repairs, Servicing, Setup No Job Too Small  
Wireless & Internet Setup Apple Macs Data Transfer  
New PC's, Laptops, Upgrades Tuition Safe PC Disposal  
Tablets, iPads, iPhone, Setup & Tuition Smart TV, Media box  
Wireless/Airprint printers Wireless/ Internet boosters

**\*\* For All Your PC & Technology Needs \*\***

Guy Senior

Phone: 0114 2352662 Mobile: 07890030453

Email: [guy@gwstech.co.uk](mailto:guy@gwstech.co.uk)

Web: [www.gwstech.co.uk](http://www.gwstech.co.uk)

GWS. 5 Conalan Avenue, Bradway, Sheffield S17 4PG

# Dore Optician

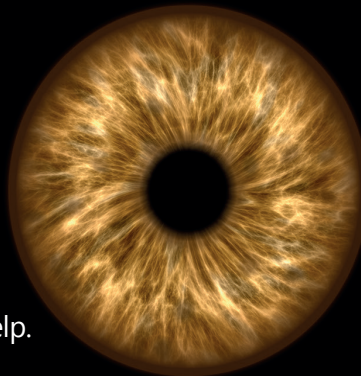
Ian Truelove BSc(Hons) MCOptom      Family Optometrist  
Personal and Professional eye care for all the family

Ian and Tina Truelove have refurbished Dore Optician with the very latest technology

⇒ Hospital-quality 3D OCT imaging allows earlier detection and diagnosis of many eye problems.

⇒ Free complete spectacles available for children and all eligible under the NHS.

⇒ Home eye tests available if you are unable to leave the house without help.



⇒ Digital retinal photography.

⇒ ReadEZ: Coloured overlays and Enhanced reading assessments for those with reading difficulties or visual stress.

⇒ Hundreds of frames to choose from for all the family, covering a wide range from £10 to designer.

⇒ Free NHS and private eye examinations – hourly appointment slots, never feel rushed.

Please contact the practice for more information, or pop in for a chat.  
25 Townhead Road, Dore, Sheffield, S17 3GD

Tel: 0114 3273737      Email: [enquiries@dore-optician.co.uk](mailto:enquiries@dore-optician.co.uk)      Web: [dore-optician.co.uk](http://dore-optician.co.uk)



Association of  
Optometrists  
Ian Truelove  
MEMBER 2022



ReadEZ



THE COLLEGE OF  
OPTOMETRISTS  
MEMBER 2022

Providing NHS services and registered with the Association of Optometrists, College of Optometrists, General Optical Council

**RHYTHM TIME**

Fun, developmental music classes!

Join us in **Totley**

All Saints Church Hall  
**Thursday**  
Toddlers – 9:30  
Babies – 10:15

Also in:  
Greenhill  
Crosspool  
Bents Green  
Bakewell  
Dronfield  
Fulwood

Contact Beth  
[beth.w@rhythmtime.org](mailto:beth.w@rhythmtime.org)  
07748 589 468

or book here:  
[rhythmtime.net](http://rhythmtime.net)

## Unstone GardenScapes

Let us transform your garden

From concept to completion

Fully insured.  
Over 25 years experience.  
Portfolio available.

Decking Fencing Patios Turfing Planting  
Or just a general tidy up

Call Jason for a free quote  
Mobile 07791069360



## Walking Blues

RONY Dear Head Eater,  
Just as I sat down to write this article,  
Blue ate a whole wholemeal loaf. We  
Doggled him to see if he was ok, and  
he will, but he might be a bit flatulent ...

HEAD EATER Me too...

BLUE The weather is getting windier too. Isn't  
it the Dog Days now Rony?

RONY I was at Oxford but even I don't know  
what Dog Days are, Blue.

HEAD EATER What are dog days Blue?

BLUE They are at Michaelmas, which is  
named after St Michael.

RONY Michael was Our Dave's name before it  
wasn't, wasn't it Our Dave?

*Enter Our Dave*

OUR DAVE I was originally named Michael but  
the kids off the Council called me Mick  
which my mother Lily said made me  
common. And I couldn't spell myself  
anyway. So Lily changed me to Dave...

*Exit Our Dave*

HEAD EATER Dog days indeed!

BLUE Didn't your Dad Gethin sing a funny  
Dog Days song about Autumn Rony?

RONY He did. It's all about leaves falling down,  
but the tune keeps going up.  
Now when I was a disc jockey -

*Enter Librarian*

LIBRARIAN I've researched dog days in Totley  
Library and they are a 2008 song by  
Florence and the Machine.

RONY (cries) I was a disc jockey until they fired  
me for being too old and autumnal.

LIBRARIAN Autumn is a good time to get old and  
autumnal. Everything smells of dying  
and fallen leaves and John Donne's  
hydroptic earth and teenagers setting  
fire to each other in Greenoak park.

BLUE Didn't that Welsh bloke DylanThomas  
you're so fond of write about Autumn all  
the time Rony?

RONY Yes. Especially, Especially When The  
October Wind. He wrote it for his  
own birthday even if his own birthday  
wasn't till November.

BLUE Sounds like he didn't know what day it  
was.

RONY He didn't. He was Wellsh. And he  
liked boozing, so he was a bit of a dog's  
breakfast even before breakfast .

LIBRARIAN 'Blue' in Welsh is 'Glas'.

RONY And Bob Dylan has a dog called  
Brutus.

*Enter Bob Dylan and Brutus*

BOB DYLAN Yeah man. I also sang-  
Dahn the straits the dogs are something  
And something something....

*Exit Bob Dylan and Brutus*

BLUE Did you do Autumn at All Saints  
School?

RONY Yes, but we got slapped if we said the  
silent N.

BLUE Did you do dogs at All Saints Church?

RONY No. We did God mainly. Though God is  
dog backwards of course, and St Rach  
is the patron saint of dogs. And at King  
Edw-

HEAD EATER No! Readers are getting fed up with  
King Edw-

RONY Me too, but the past gets nearer the  
further away it is.

*Enter Sally*

SALLY I've only lived in Totley for 15 years so  
I'm still trying to impress people:  
The Welsh for Blue is Adryn  
The French for Blue is Blur.

HEAD EATER French is sometimes permitted in the  
*Totley Independent* because  
Lemont, like Lemont Rd where you live,  
is French. But hurry up we've only got  
room for 51 more words.

RONY I'll finish with Dad's song then.  
And everybody has to join in!  
(including you dear Reader):

Autumn leaves are falling falling  
falling falling  
falling falling  
falling falling

FLORENCE AND THE MACHINE The dog days are over  
the dog days are done  
the horses are coming  
so you better run

**by Rony Robinson and Blue**



**Saturday 21st October  
10am - 1pm**

**Dore and Totley  
United Reformed Church  
28 Totley Brook Road, S17 3QS**

**All sorts of fantastic jigsaws**  
**Refreshments including**  
**Cakes and Bacon/Vegetarian Butties**

For donations of new or as new jigsaws  
contact Elaine on 07929 720977



Sheffield Health Action Resource for Ethiopia

# Totley



Best in Show 2023 - Sammy Jones



Pamela Challis - winner of 9 prizes



Beatrice Barnes, Winner, Vegetable animal



Elliott Limb, Winner, Decorated gingerbread man



Emily Bond, Double prize-winner



Alice Johnson, Winner, Open any medium, 9-11 yrs



Badgers



Opening the Show: Lord Mayor Colin Ross with the Lady Mayoress and (l. to r.) Show President Les Firth, Show Steward Helen Foley, and Show Chair Mick Warwick

# Show 2023

Photos: Glyn Foley



Sammy Jones, Winner, Best in Show, with Show President Les Firth



Judging in progress



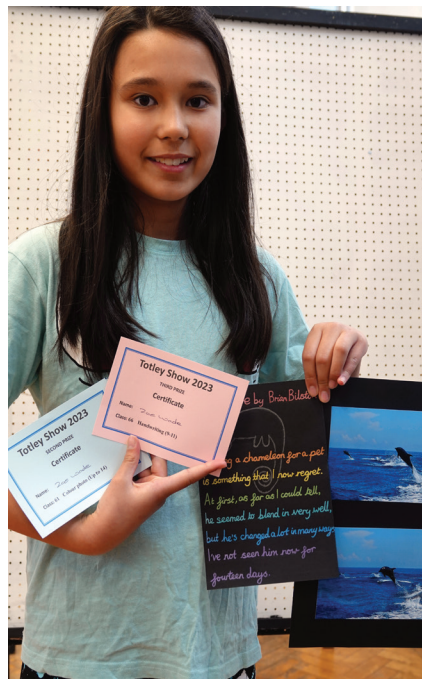
Mouse



Vegetable animal



Freddie Bond, Winner, Child's cake, 9-14 yrs



Zoe Wade, Winner, Photo & Handwriting



Olivia McGrath, Winner, Child's 3 Biscuits, up to 8



Fruit and Veg



Fish



Elephant

# Our minor service helps stop little parts of your Volkswagen becoming big problems.



## Minor service

# £129

Even Volkswagens need a service every now and again. The recommended service interval is every 12 months or 10,000 miles (whichever comes first). We only use Volkswagen Genuine Parts® which come with a 24 month warranty as standard.

Why not combine your minor service with an MOT? Prices start from just £178 for models up to and including 2.0 litre engines.

Price includes Genuine Volkswagen oil filter, oil change with replacement sump plug or washer, screen wash top up, vehicle diagnostic check, vehicle check list including lights, instruments, bodywork, glass, locks, battery, coolant levels, drive belts, braking system, steering, hoses, drive shafts and exhaust system, service book stamp or Digital Service Schedule entry and road test. All prices include parts, fluids (if applicable), VAT and fitting. Offer limited to 4 cylinder engines up to 2.0 litres, Petrol, petrol hybrid and Diesel. Available for a limited time only. Terms and Conditions apply. For details call 0114 2446589. Service operations can vary between vehicles depending on specification and factory fitted equipment. The word "Volkswagen" and the phrase "Volkswagen Genuine Parts®" are registered trade marks of Volkswagen Group UK Ltd and Volkswagen AG. Autohaus Dolby Ltd is an independent Volkswagen specialist and uses the terms associated with Volkswagen Group UK purely as descriptive words and implies no direct association with Volkswagen AG, Volkswagen Group UK Ltd or its franchisees.

## Autohaus Dolby Volkswagen Service

0114 2446589  
Barleywood Rd,  
S9 5FJ  
[autohausdolby.co.uk](http://autohausdolby.co.uk)



## Totley Rise Methodist Church

Grove Road, Sheffield, S17 4DJ

Totley Rise Methodist Church aims to be a church in the community and for the community, increasing an awareness of God's presence, celebrating God's love, caring for people, helping people to grow and encouraging people to follow Christ.

### A Light, Shining in the Darkness

The end of October brings Halloween and some Christians find this a bit difficult to handle. Its name, of course, comes from it being the evening (e'en) before All Hallows Day, more commonly now called All Saints Day, when churches celebrate the lives and works of saintly people through the ages. But the origins of Halloween are in pre-Christian, Celtic traditions involving ghosts, demons and the passing of the dead into the underworld.

In modern culture Halloween has become an opportunity for supermarkets to sell pumpkins, fake blood and miniature chocolate bars, and for people to decorate their houses with cobwebs and bats. Mostly it's an opportunity for kids to have fun, but emphasis on the spooky and scary can go too far. There's a fine line between 'Trick or Treating' and 'Demanding with Menaces'.

At Totley Rise Methodist Church we prefer to emphasise that Jesus is the Light of the World, so instead of the dark and scary, we will be holding a Light Party for children (accompanied by an adult) on October 31st from 6pm to 7:30pm. Join us for games, crafts, food and singing. Entry is free, but numbers are limited so you must book a place in advance, at <https://www.eventbrite.co.uk/e/totley-rise-methodist-light-party-tickets-708555407297>.

### Regular Services Information

9am for 9.30am most Sundays - **Toddler Praise**. A 30-minute service for pre-school children and their parents/carers, preceded by refreshments from 9am.

10.30am **Mid-morning Service** every Sunday. An informal and contemporary service usually lasting approximately 1 hour 15 minutes, with a monthly Communion. Children usually leave the service for Junior Church after the first 15 minutes or so, except on the 4th Sunday of the month when the service is even more informal for **All Age Worship**.

3pm on the second Sunday of each month **Focus Church** takes place. This is a time of worship specially structured for those who have learning disabilities and cognitive difficulties.

We also support **Outdoor Church**, a movement where families with children can meet (usually on the 1st and 3rd Sundays of each month) to learn more about God's world and the Christian faith through an informal nature-focused time of fun and worship. See [facebook.com/groups/outdoorchurch](https://facebook.com/groups/outdoorchurch)

### Tuesdays at TRM

Tuesday is a busy day for us, beginning with a **Prayer Meeting** from 9.30-10am in the church. We focus on prayers for the community, for the world and any situations needing healing and the touch of God's hand.

From 10am until noon our free **Welcoming Places Coffee Morning** in the church lounge provides an opportunity for anybody to call in for free refreshments and a chat with others from the community. This began as part of the need for warm spaces for people to use when energy costs began to soar, but will continue through the summer. During the school holidays (except for the 8th and 29th August) the coffee morning will include children's activities from 10am to 11am, and baby singing from 11am until noon.

**Knit, Natter, Craft and Chatter** immediately follows the coffee morning, running to 3pm. This is a busy and friendly group, offering tea, coffee, biscuits and most importantly, friendship for up to three hours. Young and old, men and women are all welcome. Feel free to bring a packed lunch.

### Pushchair Club

Babies and toddlers aged from 0 to 5 years are welcome to join us, with their carers, on Thursday mornings from 10.30 to 12 noon. Every week in term time, the Pushchair Club fills the TRM Centre, giving children, their parents and carers a place to come together, play, sing, chat and enjoy refreshments.

### Room Hire

We make our facilities in the TRM Centre available to hire for a variety of purposes, from community groups to birthday parties. There is the large church hall with a stage, and room hire also includes the use of kitchen facilities if required. For information, details of room charges and online booking requests, please visit our website.



### The Quiet Garden

All are welcome to find stillness and peace in the Totley Rise Methodist Quiet Garden. You are invited to come, sit and wonder about our creative God. It is a place of tranquillity

and offers an opportunity, in the rush of modern life, to lay down your concerns. You can do this any time during daylight hours.

### Getting and Staying in Touch

The best source of further information is our website, [www.totleyrise.co.uk](http://www.totleyrise.co.uk) for our weekly notices and links to video recordings of many of our services. You can also submit prayer requests, and we are on Facebook at [facebook.com/TotleyRise](https://facebook.com/TotleyRise)

If you can't find what you need on the website, you can email [enquiries@totleyrise.co.uk](mailto:enquiries@totleyrise.co.uk).

## PhysioFOCUS

at Totley Rise Dental Practice  
85 Baslow Road,  
Sheffield, S17 4DP



### Physiotherapy treatment available for:

- Back and neck pain
- Sports injuries
- Sprains and strains
- Joint and muscle pain
- Arthritic pain
- Whiplash
- Repetitive strain injury
- Headaches

**Appointments: 0114 2360333**

### Also available:

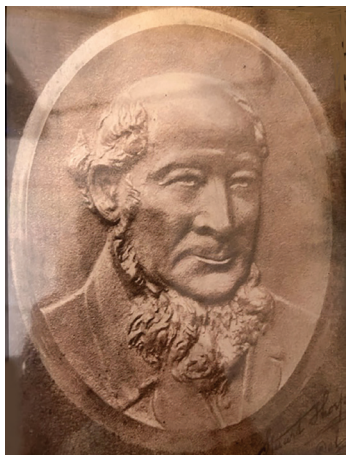
- Pilates classes
- Pilates 1-2-1
- Golf Fitness Screening  
(as used by consultants to UK, European and Australian PGAs)

For more information please call:

Emer on: 07792 422909  
Rachel on: 07956 908454

## Common Threads

In this issue we begin a series of articles by Richard Wrigglesworth, which are part of a major history project which Richard has undertaken, covering 800 years of local history.



Richard Furness (1791-1857)      George Wilson (1808-1870)

### *Clarum et venerabile nomen*

#### Introduction: Part 1 Richard Furness

When I reached pension age in 2008 one intended project was to update the family tree for the years following the death of my great great grandfather Richard Furness, the Dore schoolmaster and local poet. Fifteen years later this modest ambition has still not been achieved due to my realisation of the importance of his nephew by marriage, George Wilson, one of many great 'forgotten men' in English history.

The first book I bought cost me 20p from a bookstall, and written by George Kitson Clark called *The Making of Victorian England* in 1961 based on lectures he had delivered to Oxbridge students. In this 'he acknowledged that his book would have to be done again, it was a working hypothesis and he had no right to claim it as an unquestionably and exhaustively correct view of what actually happened. We ought to see the defects of what we have written and thought and start to write them all over again. Hopefully each revision will tell us a little more about humanity but no revision will ever be final'.

The truth of this became apparent over the next ten years due to my realising the importance of a section in the *Poetical Works of the late Richard Furness, 1858*, written by his first biographer George Calvert Holland MD (Edinburgh), a Physician at the Sheffield General Infirmary.

Richard was the eldest son of a Yeoman farmer from Eyam and had an adventurous early life, having been apprenticed for seven years in Chesterfield to a Currier called Joseph Graham - a foul occupation involving animal skins and chemicals. He joined the Wesleyan Methodists in 1808 and became a local preacher, and also made friends with both French Army and Navy prisoners on parole from the Napoleonic war - the Siege of San Domingo in 1803 and the Peninsular Wars 1808-1813. About 200 were quartered in the town and they taught him some French, acquiring both a good vocabulary and an ability to read the language. He also received tuition in mathematics from a Captain E'voie and always remained grateful for their friendship and tuition. These were the officers and gentlemen of an educated class, who were allowed to walk within one mile of the town between 6am and 8pm before the 'Frenchmens Bell' warned them to to be back in their billets.

On completion of his apprenticeship he walked to London, lodging with members of his trade Guild and stayed for a year working for another Currier and did some preaching, being sustained by a taste for Porter. In a fit of patriotism he joined the Militia and trained early in the morning before work. Whether it was because he was expected to fire his musket on his fellow working men and the Luddites, or the inevitable prospect of the Battle of Waterloo, he returned to Chesterfield within a year. He was then thrown out of the Wesleyan Methodists - not for singing a patriotic song but for

doing so in the Angel Inn. He then returned to Eyam to set up in business as a Currier and returned to the established Church to which he remained faithful to the end of his life, although a flash of the Nonconformist zeal would occasionally re-emerge later in his later life in Dore. As the eldest he would then be expected to contribute to the welfare of his parents growing family of eight younger siblings. This for me becomes the first conundrum in his life. The business failed miserably and even his brother Peter who furnished Holland with many details of his life commented that 'he was a wretched manager in pecuniary matters, almost totally destitute of common foresight.'

His second biographer is Josie Dunmore who lives in Dore and published her *I, Richard Furness* in December 1991 based on a dissertation submitted as part of an M.A. degree at the University of Sheffield, and she greatly expanded the work of Calvert Holland. Although I had known her and husband Ian for some years her work came completely out of the blue and rekindled my interest, and without it the connection with George Wilson would never have been written. Her words again take over. 'On September 5th, 1790, Samuel Furness, a thirty two year old yeoman farmer from Eyam, Derbyshire, married Margaret the youngest daughter of John Bradshaw of Frith Hall, Brampton, aged eighteen, and on August 2nd 1791 her first son was born and baptized Richard, the eighth Richard to be born into the family home at the Townhead end of Eyam since his ancestor, another Richard, first built the stone double fronted cottage that still stands with the initials R1615F, close to the ruins of old Stafford Hall, parts of which are still visible today.'

His mother Margaret was remembered as a person of 'vigorous intellect, great firmness of mind, and a remarkably retentive memory.' His father Samuel had been orphaned out as a small boy and brought up by his paternal grandmother. He had no formal education and had to make himself literate by his own efforts which led him to make financial sacrifices for the education of their own children. They were all educated at the local school which was well managed at a time when many were not. Richard attended at the age of four, and over the next ten years was taught arithmetic, mensuration, grammar and geography. He also received his share of beatings for misdemeanours and occasional truancy and for being self willed. He also had to help on the family thirty acre farm - in later years looking back on his farming abilities he boasted of cutting an acre of hay in a day when he was thirteen.

At fourteen at he became bookkeeper at the two small factories at Messrs Greg and Co, where dimity, fustians and other cotton goods were woven. He was compelled to spend several months acquiring practical knowledge of the business by learning the art of weaving before being allowed to enter his duties as bookkeeper. At this stage came the great turning point in his life when two of his Bradshaw uncles 'having been born gentlemen' at Frith Hall objected to their nephew becoming a mere bookkeeper and arranged his training as a Currier. Having spent over sixty years being one I am probably the first person to envy him his fate. What should have happened is that they stepped in when he finished his apprenticeship and sponsored his training as a Doctor in Edinburgh, which is what happened to his first biographer Calvert Holland who initially trained as a Perruquier - a wig maker - before going on to make and lose a fortune as a Doctor. Things would have been much better for all concerned.

Josie has also recently written a book on Trolley Hall which embraces D'Ewes Coke who acted as a sort of surrogate squire to Dore, was one of the School Trustees and was later involved with the funding the building of the Church in 1828 for which Richard drew the plans and which in 2023 is being modernised. I am especially grateful for her analysis of his poetry for which I have little aptitude. Josie and Calvert Holland are hard acts to follow. My only claim to genuine research is on George Wilson whose career dominated my free time for ten years from 2008 until 2018, five of them going through forty three volumes of his papers in Manchester Archives and five at the National Archives in Kew on the Minute Books of the Manchester and Leeds Railway, later the Lancashire and Yorkshire, before a Pacemaker and Covid intervened!

There is one other Historian whose importance must be recognised. Clarence Daniel of Eyam was responsible for

connecting the Furness and Bradshaw family histories back to the Staffords. I was introduced to him in 1957 at the age of fourteen, at a small reception to celebrate the one hundred year anniversary of Richard's death and the restoration of his gravestone. He had connections to the Furness family but I am afraid it fell on deaf years once I realised my ancestor never played football or cricket.

Both the Bradshaw and Furness families had acquired properties in Eyam via association with the great family of Staffords who for over four centuries had owned several hundred acres of land in Eyam and adjoining Bretton and Foolow, an estate reputedly descended to them from King John in around 1200 for military services. The name died out when the last male heir Humphrey Stafford, living in Eyam in the 11th and 33rd of Henry the 8th died about 1542. His two sons had predeceased him and his immense property was divided among his four daughters - Alice, Gertrude, Ann and Katherine. Alice married a John Savage, also Humphrey, in 1613 for £1013.6s in total to a group which included Richard Furness. Yeoman. Presumably this is the land which Townhead Farm is built on with the date R1615F.

Gertrude married a Rowland Eyre of Hassop, another significant family in the area, and had eight sons and four daughters, dying in 1624. By this marriage the Eyres acquired the two manors of Carver and Rowland. Their last male lineal descendant was Francis the seventh and last Earl of Newburgh, of Hassop.

Ann married a Francis Bradshaw of Bradshaw in the County of Derby. She inherited the 'Hall or her fathers in Eyam' situated adjoining Townhead Farm and was rebuilt and extended in the years prior to the Plague in 1665-6, but they fled to escape the pestilence to Brampton and never returned to complete it, suffering various indignities as cotton factory and lead miners cottagers. It is said the tapestries were left to rot. A John Bradshaw to achieve some distinction became President of the High Court of Justice at the trial of King Charles I. Katherine married Rowland Morewood of Bradfield, Yorkshire. She brought to her husband an estate at Middleton Bank, Eyam and Riley which was sold to a James Furness of Stoney Middleton, near Eyam and a few others about 1700.

The Furness family during the plague moved a couple of miles up the road to the beautiful village of Foolow where they owned another property, which probably did not endear them to the residents in lockdown.

### Coats of Arms

This is another area which came a great surprise and raises another conundrum. I had seen a rough drawing of the Furness one but never appreciated the connection with being a Yeoman Farmer until I was seventy five and nobody in the family seemed aware of it, certainly not my father and great aunt Eliza Spalton who was the last surviving grand daughter of Richard Furness.



**Furness:** Arms: Argent, a Talbot sejant, Sable in chief three crescents Gules. On a white or silver shield, black dog sitting upright beneath three red crescents with horns pointing upwards. Crest: Out of a ducal coronet in gold with a lion's paw grasping a lance in natural in colours. (Not a coronet of rank but which has been used as a device by many families) Motto: Animo et Fide ('By courage and faith').

I love the Talbot sejant - the black dog as the symbol for 2023, spreading across the land!

Quartered Bradshaw/Stafford. STAFFORD 2nd & 4th Arms: Or, a Chevron Gules between three Martlets Sable. On a yellow or gold shield, an upturned red vee between three black birds. An Annulet Gules, representing a third son. Crest: Out of a ducal coronet per pale Or and Gules, a boar's

head and neck Sable.

Motto: There is no evidence that the Eyam branch ever used one.

One interesting note is that Humphrey, 6th Earl of Stafford, who became the 1st Earl of Buckingham, had the same arms with a gold background and Chevron Gules but his motto was of the Order of the Garter to which he was entitled as a KG.



BRADSHAW 1st & 3rd Arms: Argent, two bendlets, between two martlets Sable. On a white or silver shield two bands between two black birds.

Crest: A stag at gaze under a vine tree fructed proper.

Motto: Qui Vit Content Tient Asse. 'He that lives content has got enough'.

Note: The quartering is an interpretation by the heraldic artist Tom Meek which was arranged for me by Dr Richard Baker, principal of the Institute

of Heraldry in Canterbury. The Arms represent the children of a male Bradshaw to a female Stafford. The family name became Bradshaw so the names become transposed with only one motto that of Bradshaw. Margaret Bradshaw was the mother of Richard Furness, her eldest son, and provides the link back to 1200.

So how had a youth who had worked so diligently for seven years, and studied late at night by candlelight, forging his Masters applications for more books from the local Subscription Library written by radical men such as Alexander Pope and Tom Paine, become so distracted and incapable as a businessman?

**To be continued in the next issue!**

**Richard Wrigglesworth**

## Totley Show 2023

Another successful Show at Totley this year! It was pleasing to see so many families in the afternoon.

It was great to welcome the Lord Mayor and his wife to officially open the Show. The indoor rooms and outside areas were buzzing with friendly chatter.

Full details of the results in all the classes will appear in the December 2023/January 2024 edition of *Totley Independent*.

*Mick Warwick, Totley Show Chair*



## John Heath & Sons

AN INDEPENDENT FAMILY FUNERAL BUSINESS

*Sometime.....*

You will probably have the responsibility of making funeral arrangements. No one looks forward to this responsibility, but the death of a family member or friend brings with it an obligation that must be met. There are people who can help you meet this responsibility. We have been helping people combine the different aspects of the funeral into a meaningful service for over 125 years.

Please Call Day Or Night

**(0114) 272 2222**

**Head Office - Earsham Street**

Also at Meadowhead, Ecclesall Rd, Crookes and Stanington

[www.johnheath.co.uk](http://www.johnheath.co.uk)



# Are you suffering from hearing loss?

Get in touch with your local clinical audiologist expert today!



Our Services  
**Hearing Tests**  
**Tinnitus Treatment**  
**Hearing Aids**  
**Ear Cleaning**

**Bupa & CQC**  
Registered

To book an appointment at our Dore clinic, or for further details:

**0114 349 3326**  
[hearingtherapy.co.uk](http://hearingtherapy.co.uk)  
[info@hearingtherapy.co.uk](mailto:info@hearingtherapy.co.uk)

## Apple Landscapes and Paving

Established 19 years

Specialise in full garden makeovers.  
Patios, paths, walls, turfing, fencing.

Check out our FB page.

07782167540

01246237505





## Totley Scouts

### Join Our Scout Adventure!

Looking for a meaningful way to give back to the community? Look no further! Totley Scouts are calling on passionate individuals like YOU to become leaders or to join our Committee as Chair.

As a group leader, you'll guide our young Beavers, Cubs or Scouts on exciting journeys of discovery, helping them build character, leadership skills, and lifelong friendships. It's a chance to share your knowledge and make a lasting impact for future generations. Our Friday Scouts in particular could really use some new volunteers, as two of our long serving Friday Scout helpers, Chris Caroe and Ed Martin, have recently left, owing to other commitments. Ed has stood down altogether and Chris has moved to Monday Scouts. We're very grateful to Ed for the time and involvement he's given to our Group, and look forward to seeing new members of the community getting involved.

If you're more inclined towards organisation and planning, why not consider becoming our chairperson? The Group is run by our Executive Committee, and we're in need of a new volunteer to be our Chair. After 5 years in the role, Helen Armstrong is standing down and we'd like to say a huge thank you for everything she's done for the Group - and particularly for how much Helen has done towards making the refurbishment of our hut happen. Whoever takes over from Helen will play a vital role in shaping our group's future and ensuring it continues to thrive.

Please join us in fostering a sense of adventure, leadership, and camaraderie in our youth. Together, we can create memories that last a lifetime. Get involved today, and really impact the local community. Totley Scouts is enjoyed by over 180 local kids - it plays a vital role for their personal development.

Contact us at [totley1stscouts@gmail.com](mailto:totley1stscouts@gmail.com) to learn more about the roles available and start your Scouting adventure!

## Councillors' Update

It remains a very busy time for local Councillors with some key decisions coming up on planning applications over the next few weeks. The major proposal for the Dore Moor Garden Centre site is due to go before the Planning Committee very soon, however at the time of writing no date has been set for the meeting. We are also concerned about the redevelopment of the Dyson site on Baslow Road, which is a complex and major proposal on previously developed land within the Green Belt. It is also on the edge of the National Park and close to a site of Special Scientific Interest. This application is likely to generate a lot of comments and we are encouraging residents to consult the plans in detail and make their views known. Further details of the proposal can be found on the SCC Planning website under ref 23/02164/FUL.

Recent bad weather saw the return of some flooding on Abbeydale Road South near the station & Ecclesall Woods. We have asked the Council's contractors to check the condition of drains and culverts in the area, and we also asked for a review of their maintenance schedule. We can't control the weather, but contractors do need to meet their obligations to maintain local services.

On a more positive note there is some very welcome news about Totley Bents Recreation Ground. As part of a planning agreement for a development in Loxley that was approved some time ago, Sport England required an improvement cricket facilities elsewhere in the city. After lengthy discussions a payment has been received to introduce a non-turf (all weather) pitch in Totley. The expectation is that it will be installed early next year, together with some pre-season renovation works to other areas.

On an unpleasant note, dog fouling on our green and open spaces remains a serious problem, particularly on fields and playgrounds used by children and sports clubs. Dog poo is a health hazard. The Council is taking action in known hot-spots but every dog owner should take responsibility and clear up

after their pets every time.

And finally....This year's 'Ward Pot' is also open for grant funding applications from voluntary, and self-help groups in the local area. Details can be found on the Council website. Alternatively contact one of us and we will point you in the right direction.

*[martin.smith@councillor.sheffield.gov.uk](mailto:martin.smith@councillor.sheffield.gov.uk)  
[colin.ross@counillor.sheffield.gov.uk](mailto:colin.ross@counillor.sheffield.gov.uk)  
[joe.otten@councillor.sheffield.gov.uk](mailto:joe.otten@councillor.sheffield.gov.uk)*



## Transport 17

### Totley Show

Thank you to all those who came to see us at the Totley Show recently. It was great to see supporters of all different ages and to have the opportunity to speak to the local community about the service we provide.

### Volunteering at Transport 17

If you enjoy helping people and would like to give something back to your local community, come and find out about the volunteering opportunities here at Transport 17. We have a small, friendly group of volunteers who would be really pleased to show you around and tell you more about what we do. We welcome individuals who would like to help on a regular basis each week, those who could offer some time less frequently (e.g. fortnightly, monthly), and also those who might be able to offer some time on a more flexible basis. There is a variety of roles available including helping with fundraising, and planning and organising events. However, what we are



currently most in need of are minibus drivers and passenger assistants. Full training and induction is provided and funded by T17. As a minibus driver you would drive the minibuses that provide door-to-door group

transport for older people who wouldn't otherwise get out. You would always be accompanied by a passenger assistant. The time commitment can vary between 3-4hrs (a morning or afternoon) and longer days of 6hrs. This could be once a week, or less frequently. And as a Passenger Assistant, you would provide assistance to those older people who are less mobile, to and from their home to bus to venue, and ensure they are comfortable while on the bus. The passenger assistant works alongside the driver often making up a regular and consistent team of two.

Each individual has their own reason for volunteering and their own ideas about what it will do for them. The most important thing about it is that you should enjoy it and that it's a rewarding experience for you, as well as for the people you help. If you, or anyone you know, are interested in finding out more about volunteering with Transport 17, please contact us on 0114 236 2962, by completing the contact form on the website at [www.transport17.co.uk](http://www.transport17.co.uk), or by emailing us at [volunteerco@transport17.co.uk](mailto:volunteerco@transport17.co.uk). We look forward to hearing from you.

### Christmas Fayre

The Christmas Fayre this year will be held on Saturday 25th November, from 10am - 12pm, at the newly-refurbished Cross Scythes pub on Baslow Road, Totley. The new management have welcomed Transport 17 and expressed their wish to continue supporting us and our fundraising events which is great news. We look forward to seeing you there and hope you will enjoy the established favourites such as the Christmas 'Bottle Bonanza' where every ticket wins a prize, as well as some new stalls and activities. We will be bringing a selection of children's Christmas crafts so set aside the date to make some cards and gifts to give to friends and family over the festive season. We look forward to seeing you there.

*Fiona Smith*

# ACTIV PHYSIO

Call us on **0114 235 2727**  
to book now!

Evening &  
Saturday  
appointments  
available



Say Goodbye to aches & pains and make an appointment with our team of friendly Physiotherapists at our **Totley Clinic**

- Back & Neck Pain
- Headaches
- Joint & Muscle pain
- Post Operative Rehabilitation
- Sports Injuries & Massage
- Women's Health Issues
- Acupuncture
- Home Visits & much more...

**Open**  
**Monday - Saturday**  
**5\* Google rating**

E: [admin@activphysiotherapy.co.uk](mailto:admin@activphysiotherapy.co.uk)  
W: [www.activphysiotherapy.co.uk](http://www.activphysiotherapy.co.uk)  
A: 88, Baslow Rd, Totley, Sheffield. S17 4DQ

# Sheaf Skips

Your Local Skip Hire Company

**0114 258 3279**  
[www.sheafskips.co.uk](http://www.sheafskips.co.uk)



**Same Day Service Available**  
**Professional and Efficient**  
**Fast, Reliable & Affordable**  
**Mini, Midi & Builders**  
**Size Skips Available**  
**We welcome Business Account Customers**



**WE SELL SMOKELESS COAL/FUEL LOGS - KINDLING PACKS FIRELIGHTERS**  
**OPEN 6 DAYS A WEEK**

**FREE DELIVERY ON BULK BUYS**  
**ASK FOR DETAILS**

Unit 5 Heeley Arches, Oak Street, Heeley, Sheffield S8 9UB

Est 1971

## R.S. HEATING & BUILDING CO.

**Heating division**

Experienced installers of all types of domestic boilers. Authorised installers of Vaillant, Worcester Bosch and Glow Worm boilers.  
Full after sales service dept.

### Plumbing division

Bathrooms, showers, wet rooms, individually designed washing rooms for the disadvantage a speciality.  
A complete service, from design to even laying a new floor surface

### Building division

Kitchens, complete House renovations including general building, joinery, plastering, tiling, electrical, decorating etc.

88 Sunnyvale Road, Sheffield S17 4FB  
Tel: 0114 2364421  
[enquires@rshb.co.uk](mailto:enquires@rshb.co.uk)  
[www.rshb.co.uk](http://www.rshb.co.uk)



# Millthorpe Nursery

**It's bulb planting time**



Nothing's better than tulips and daffodils to brighten your spring garden, and now's time to think about putting them in.  
We have a great range of bulbs available plus fantastic pansies and violas for late season colour.

Millthorpe Lane, Holmesfield, S18 7SA



01142 890334



**Open Tuesday - Sunday 10am - 4pm**

## Is Silence all that Golden?

You may have noticed that more and more electric cars (ECs) are about in Topley, especially when trying to cross Baslow Road. They're easier to see when it's dark out because of their headlights being on. It's more of a problem during daylight hours when we compare them to petrol and diesel powered vehicles with engine noises of varying degree.

By now most of us have had a surprise or even a scare when confronted with an EC that we haven't heard approaching. Fortunately most of their drivers will see us in time and slow down or even stop to avoid a serious incident.

If, unfortunately, we are struck down or run over, the injury could be more serious when compared with that caused by an internal combustion vehicle, since an EC will weigh around 750 pounds or more when compared with most older cars that are lighter in weight and less damaging to people.

Although ECs are reported to be less polluting to the air we breath, we don't know just how much gas or oil is used (or even imported from abroad) in order to drive the generators that supply these cars with electricity. And, because of its greater weight, an EC will cause significantly more wear and tear on tyres and other parts of battery-run cars.

And of course, those with impaired vision, including many of the elderly, are at a special disadvantage in having to cope with largely silent EC traffic. They are now less able to depend on their residual hearing when an EC is approaching, especially when it's about to emerge from a small side road or a near-hidden driveway.

While fume-less ECs are better for our lungs and reduce road noise, they may not be of benefit where the rest of our pedestrian bodies are concerned. Bear in mind that as we age, our muscles, our brains and our speed of responding will become increasingly less efficient, especially our sensory organs of vision and hearing – along with our reduced capability in safely crossing busy roads when the signal lights turn too quickly from green to red before we reach the pavement on the other side!

But with modern innovation and government encouragement, this is where our rapidly advancing technology could come to the rescue. Before long it should be possible to provide nearly everyone, especially those affected by difficulties with hearing and/or sight or with limited mobility, with a small electronic device (or by a mobile phone) to warn us, visually or by sound (or both) of an approaching vehicle and how long it's likely to arrive at the crossing in question.

It should also be possible – and not too expensive – to fit a car or other means of transport to warn its driver of a person handicapped or otherwise, who's crossing the road in front of them, and letting that driver know of objects like a ball having landed in their path which is about to be followed by a child chasing after it.

Obviously, with large groups such as a class of children or an elderly walking group, the driver should definitely be informed, if only by sound of anyone or any group a short distance ahead, and definitely when the weather is bad.

Regardless of the condition of the roads and whether traffic or crossing lights are working or not, it would be important to have a reliable back-up system, and certainly for busy roads where, unfortunately, not every driver observes the speed limit, despite the occasional presence of a parked speed detector van.

The cost to the community in terms of tax paid by individuals and by businesses for the upkeep of the NHS and welfare programs plus the time and effort needed by carers (whether paid or not) in looking after seriously injured road victims is immense. Hence, any improvement and change in our means of travel should also be measured by its full cost and by the quality of life of all those injured who have to be looked after.

In effect, how we behave in getting across Baslow or other busy roads, should be a full-time job when not listening to and speaking on any version of a smart device. It would then be in line with driving a quiet EC and its advantages over cars with combustible engines and their unwelcome fumes.

Arthur Kaufman

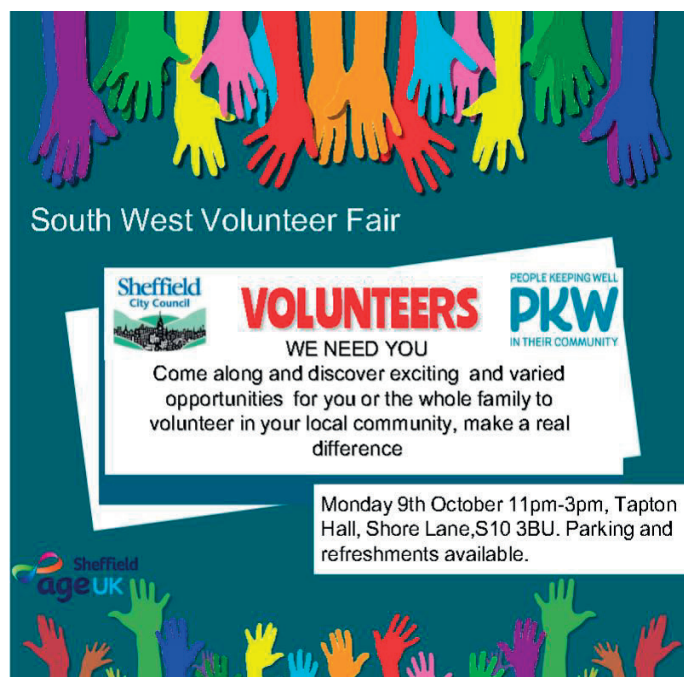
## Special request for TI fans!

Sheffield Local Studies Library has recently been in touch with us, in connection with adding past issues of *Topley Independent* to their digital archives of journals, which they make available to their customers.

As most of you will know, back issues of the magazine are readily available on our website at [www.topleyindependent.co.uk](http://www.topleyindependent.co.uk) but for ages we have had a gap in our own archives.

That gap is Issue Number 84 from February 1985! We've had no luck so far in locating a copy, but if any avid Indy fan out there has this in their extensive collection, please let us know!

All our contact details are, as usual, on the back page.



The poster features a background of colorful hands reaching up. At the top, it says "South West Volunteer Fair". Below that, there are logos for "Sheffield City Council", "VOLUNTEERS WE NEED YOU", and "PKW PEOPLE KEEPING WELL IN THEIR COMMUNITY". The main text reads: "Come along and discover exciting and varied opportunities for you or the whole family to volunteer in your local community, make a real difference". At the bottom, it states: "Monday 9th October 11pm-3pm, Tapton Hall, Shore Lane, S10 3BU. Parking and refreshments available." There is also a small logo for "Sheffield age UK" at the bottom left.

## Letter to the Editor

From Mrs. Patricia Borland:

Regarding your article concerning car parking at Dore and Topley station: as I pointed out years ago, there is a tract of land near the bottom of Twentywell Lane. There is also a path direct to the station behind the flats.

This plot of land belongs to the railway and it's a good size. 60 years ago, St John's scouts and guides played football and rounders on it. Surely common sense would be to utilise this land? "Railway land for railway users"!

Mark and Sally Fletcher invite you to

**The Grouse Inn**

**Longshaw**

Sheffield S11 7TZ

**Meal times: Mondays 12.00 to 2.30pm**

**Tuesdays to Fridays 12.00 to 2.30 pm  
and 6.30pm to 9.30pm**

**Saturdays 12.00 to 3.00pm and 6.30pm to 9.00 pm  
(drinks – open all day)**

**Sundays 12.00 to 9.00pm**

**Phone 01433 630 423**

# Friends of Dore & Totley Station

## Jam tomorrow, chaos for now!

If all goes to plan we have just six more months of construction work before we can use our extended station from April.

The new platforms are taking shape

In the last issue I said that the new platforms and footbridge with lifts would be complete by the end of October. When I wrote that I thought it was a bit optimistic but that's what I'd been given to write. Of course it was wrong.

The three slides FoDaTS were supplied on 12th September are reproduced as received. A public communication event is due over the coming weeks but we haven't been advised of the date.

**Upcoming work dates**

**HOPE VALLEY**

**Platform and footbridge installation:** present – February 2024 (weekdays & Saturday nights)

- Concrete work and installation of pre-cast units for platforms: Present - October
- Installation of lift shafts and footbridge: October – November 2023
- Underbridge extension: December 2023

**Track installation & follow up work:** Present – March 2024 (some Saturday nights)

**Earthworks, installation of retaining wall, & track installation in front of Poynton Woods:** Present – March 2024

**Upcoming line closures**

**HOPE VALLEY**



- Sunday 5th November
- Sunday 12th November
- Monday 25th December & Tuesday 26th December
- Sunday 31st December
- Saturday 20th & Sunday 21st January 2024
- Saturday 27th & Sunday 28th January 2024
- Sunday 4th February 2024
- Sunday 11th February 2024
- Saturday 16th March – Monday 25th March 2024

Please check <https://www.nationalrail.co.uk/> for information on changes to journeys.

**Car park closure dates throughout the project**

**HOPE VALLEY**

- 21 April – 2 October 2023: some spaces closed
- 3 October – 14 November 2023: car park closed
- 15 November – 10 December 2023: some spaces closed
- 11 December 2023 – 10 January 2024: car park closed
- 11 January – 26 February 2024: some spaces closed
- 27 February – 5 April 2024: car park closed
- 6 April 2024 onwards: car park reopens

Car parking is the hottest issue for most station users – and for those living near the station. You'll see that the station car park won't be fully open again until April. By that time it will be needing remedial work as the road surface, kerbs, pavements and green spaces are taking a battering.

In the meantime, Abbeydale Road South towards the Industrial Hamlet may offer the best parking but you'll need to allow an extra 10-15 minutes for the walk.

## Green spaces

We have been assured new shrubs will be planted between the platform and the car park once all is complete. The frontage to Abbeydale Road South will also be restored. The space between the platform and the path up to Twentywell Lane may have already been cleared by the time you read this.

## Services now

Sadly strikes are still with us so keep an eye out for the almost inevitable next ones.

Northern services have been running well, with fewer cancellations than on any of their other lines out of Sheffield. East Midlands have also been doing well. TransPennine Express? Still the worst of the three but signs of significant recovery are coming through. It may not be too much longer before we can plan any TPE journey and have a better than 90% chance of getting there on time.



## Finessing the new station

It's proving difficult to nail down the final details, most particularly around the station entrance. The existing shelter is soon to go. The conifer is 90% certain to go too. There is very little money available for more than basics from Northern, Network Rail or South Yorkshire Mayoral Combined Authority. We're caught between all three – as we are with three Train Operating Companies. We hope to get more clarity very soon.

The next Christmas edition of the *Totley Independent* should carry pictures of extended platforms and the footbridge. It's probably too much to expect that the industrial relations issues will have been resolved by then.



*A little nostalgia - a photo from the early 1960s when we still had a ticket office and staff.*

If you're a Facebook user, you can find and join us by searching for FoDaTS. It's a very active group and is updated frequently with topical information and comments.

Alternatively look for our website at [www.fodats.net](http://www.fodats.net)

If you're not on Facebook and would like more information please send an email to our Secretary; [njbarnes@outlook.com](mailto:njbarnes@outlook.com)

*Chris Morgan, Chairman*

Activity	Venue	Primary Contact (Group leader)
Coffee and exercise classes: Strength and balance Welcoming spaces- Exercise and coffee Gentle and seated Gentle Circuits	Bradway Community Hall Dore and Totley United Reformed Church Totley Library/CRIC Fulwood Chapel St Peter/St Oswalds Abbeydale	Community Wellness Service – 0114 553 7807
Sporting Chatter / Sporting Chatter films	Dore and Totley United Reformed Church	Phillip Staton – 07788 620313
Singing Teapot Choir	Dore and Totley United Reformed Church	Yo Tozer Loft -07925 634420
Welcoming space (board games, refreshments and biscuits)	Dore Methodist Church Hall	10.30 to 13.30 every Wednesday- No booking requirement just drop in
Dore and Totley Rosemary memory café (Dementia targeted)	Dore Methodist Church Hall	AUKS-0114 2502 850
Cosy Creatives	Online with trained art Therapist	AUKS -0114 250 2850
Well With Nature	Cricket Inn, Totley	Caroline Cook – 07583 551705
Forrest Bathing	Graves Park	Caroline Cook- 07583 551705
Woodwork Wellbeing	Bradway Community Hall	Steven Fridlington – <a href="mailto:woodworkwellbeing@ouytlook.com">woodworkwellbeing@ouytlook.com</a> 07900 344361
Ecclesall and Bannercross Forum	Cherry Tree Pub, Carterknowle	Paul May – <a href="mailto:paulmay@blueyonder.co.uk">paulmay@blueyonder.co.uk</a>
Dance to Health Sheffield	St Augustine’s church, Endcliffe	<a href="mailto:NesreenShah@ae-sop.org">NesreenShah@ae-sop.org</a> 01993 870159
Community Journalism and Memoir Writing	Online activity with qualified writer and journalist	Kathryn Reaney - <a href="mailto:reaneywrites@gmail.com">reaneywrites@gmail.com</a> , 07854 751932
Table Tennis	Bradway Community Hall	Jan – 07787 954842/0114 418 6463
S11 Carers Walk	Various	Sheffield Carers Centre -0114 278 8942
Natter Coffee Morning	Totley CRIC	Totley All Saints Church -0114 236 7627
Coffee on the corner social drop in	Coffee on the corner – Totley	Coffee on the corner- 07941 780772
South West Friendship Lunches (dinner, entertainment)	Shepley Spitfire pub, Totley	0114 236 0298
	Robin Hood Pub, Millhouses	0114 236 9107
	Crosspool Tavern Pub, Crosspool	0114 266 2113
	The Ball Inn, Crookes	0114 266 1211
	The Shiny Chef , Fulwood	0114 303 0556
Fulwood Memory Café (Dementia targeted)	Fulwood Scout Hut	Eliza@AUKS - 0114 250 2850
S17 Carers Café	Border View Farm	Sheffield Carers Centre – 278 8942
Calmly Create	Fulwood Old Chapel School Room, 8 Whiteley Lane, Sheffield, S10 4GL	South Yorkshire Chaplaincy and Listening Service 07903 899751 <a href="mailto:sycls@sycls.co.uk">sycls@sycls.co.uk</a>

## TOTLEY & DISTRICT DIARY

- MONDAYS** **AGE UK FITNESS** Dore & Totley United Reformed Church, 1.30-2.30 pm. Contact Jo Woodward 250 2850  
**GUIDES**, All Saints Church Hall, 6.45pm-9pm  
**SLIMMING WORLD** Totley Rise Methodist Church, 5pm and 7pm. Call Sarah on 07577 070797
- TUESDAYS** **PILATES** The Old School, Dore, 9.30-10.30am. Phone Sally Kilner 07917 762502  
**TOTLEY OPERATIC AND DRAMATIC SOCIETY (TOADS)** meets 7.30pm to 10pm, in the Guild Room, St John's Church, Abbeydale Road South. For more information call 0114 2351206  
**BABY TIME** Totley Library, Tuesday 1.30-2.15pm (term-times only). Come along to meet other parents/carers and babies. We sing simple songs, have fun and allow time to chat  
**SHEFFIELD MARQUETRY GROUP** 10am-12noon, St Oswald's Church Crypt, Bannerdale Rd. Small friendly group - beginners welcome. For information phone Graeme 07947 127909 or Pat 0114 2819915  
**KNIT, NATTER, CRAFT & CHATTER** Totley Rise Methodist Church, 12 noon-3pm  
**JAZZ IN THE AFTERNOON** 1.30-3.30pm, Totley Rise Methodist Church Schoolroom. A weekly afternoon of all forms of recorded jazz, plus discussion. Tea, coffee and biscuits available  
**YOGA CLASS** 1.15 - 2.45pm at Dore and Totley United Reformed Church. Contact Rachel (qualified level 4 BWY teacher) 07708 996984 or yogaq@hotmail.co.uk  
**WELCOMING PLACES COFFEE MORNING** open to all, Totley Rise Methodist Church, 10am to 12 noon  
**TAI CHI** Dore and Totley United Reformed Church 4-5 pm. Contact Bernice on 07999 617387
- WEDNESDAYS** **PILATES CLASSES** Dore & Totley United Reformed Church, 9.00-10.00am and 10.15-11.15am. Contact Caroline tel: 0781 722 0324, email Carolinenorth1@me.com, www.pilatescarolinenorth.co.uk  
**CARERS' CAFE MONTHLY** Dore & Totley United Reformed Church 10-11.30 am. Contact Jan Outram 0114 278 942  
**COFFEE IN THE LIBRARY** 10.30am-12.30pm. Come and have a coffee and a chat  
**STORY TIME** for toddlers and pre-school children at Totley Library from 10am - 11.30am (except school holidays). Children can take part in weekly themed craft activities, sing songs and listen to a story. £1 donation per child greatly appreciated  
**TODDLER GROUP** 10am-11.30am, All Saints' Church Hall. Details tel. Liz Hayden 07969 826464  
**HEALTH WALKS** 10.30am, meet at Totley Library. Contact Step Out Sheffield on 07505 639524 or email stepoutsheffield@gmail.com  
**YOGA CLASS** 6.30 - 8pm at St Johns Church Hall Totley. Contact Rachel (qualified level 4 BWY teacher) 07708 996984 or yogaq@hotmail.co.uk
- THURSDAYS** **RHYTHM TIME** Baby, toddler & pre-schooler music sessions 9.00-11.30 Details Email: beth.w@rhythmtime.org Phone/WhatsApp: 07748 589468 To book: <https://rhythmtime.net/find-a-class>  
**ROCKCHOIR** United Reformed Church, Totley Brook Rd, 11.30-1pm. See [www.rockchoir.com](http://www.rockchoir.com) or call 01252 714276  
**CHAIR AEROBICS** Totley Library, 12-12.45pm with Laura. An Age UK and People Keeping Well weekly exercise class. £4 per week, no need to pre-book, just turn up.  
**SOCIAL CLUB** Dore and Totley URC fortnightly 2.30-4.30 pm Contact Alison Holden for information 236 0441  
**PUSHCHAIR CLUB** Totley Rise Methodist Church Hall, 10.30-12noon. Tel. 07912 352543 for details  
**PILATES CLASS** run by qualified Pilates Instructor/Physiotherapist for all abilities and ages. 1.30-2.30pm, 5.15-6.15pm and 6.15-7.15pm at the United Reformed Church, Totley Brook Road. Call Emer on 07792 422909
- FRIDAYS** **PILATES** The Old School, Dore, 9.30-10.30am and 10.45-11.45am. Phone Sally Kilner 07917 762502

## OCTOBER

- SUN 1st MINIATURE TRAIN RIDES** 1pm - 5pm - Abbeydale Road South. £2 per ride per person. Car park closes 5pm. See [www.sheffieldmodelengineers.com](http://www.sheffieldmodelengineers.com)
- MON 2nd FRIENDS OF GILLFIELD WOOD** 10 Year Celebration and Open Evening. 7.30pm, Totley Library.
- SUN 8th FRIENDS OF GILLFIELD WOOD** Mammal trapping. with Val Clinging. Meet 8.30am, Totley Hall Lane.
- WED 11th TOTLEY PROBUS CLUB** 10am in Room 1, Totley Rise Methodist Church. Talk by Andrew Beard on "A History of Derwent Dams". Guests are always welcome - we are always looking for new members.
- SUN 15th MINIATURE TRAIN RIDES** 1pm - 5pm - Abbeydale Road South. £2 per ride per person. Car park closes 5pm. See [www.sheffieldmodelengineers.com](http://www.sheffieldmodelengineers.com)
- WED 18th DORE GARDEN CLUB** Margaret Boulton, "A History of Sheffield Allotments". Dore Methodist Church, 7.30. Visitors £4. See article on p.5.
- WED 25th TOTLEY HISTORY GROUP**, talk by Dr. Jenny Stephenson, "The History of Water". 7.30pm, Totley Library. Non-members welcome.
- SAT 28th TOTLEY LITTER PICKING MORNING** 10-11am. Equipment provided. This activity is done at participants' own risk. Children must be accompanied by an adult. Meet Baslow Rd, outside Totley Library. All welcome.
- SUN 29th MINIATURE TRAIN RIDES** 1pm - 5pm. Abbeydale Road South. £2 per ride per person. Car park closes 5pm. See [www.sheffieldmodelengineers.com](http://www.sheffieldmodelengineers.com)

## NOVEMBER

- WED 8th TOTLEY PROBUS CLUB**, 10am, Room 1, Totley Rise Methodist Church. Talk by Mike Storr on "Masters of Mirth - The Sequel". Guests are always welcome - we are always looking for new members.
- SAT 11th FRIENDS OF GILLFIELD WOOD** Fungi Survey with Ziggy Senkans. Meet 10.30am, Totley Hall Lane entrance.
- WED 15th DORE GARDEN CLUB** Hilary Hutson "The Colours of the Garden". Dore Methodist Church 7.30pm start. Visitors welcome, £4. See article on p.5.
- WED 15th, THURS 16th, FRI 17th at 7.30, SAT 18th at 2.30: TOTLEY OPERATIC & DRAMATIC SOCIETY** - November play "Tons of Money". See page 5 of this issue for full details.
- WED 22nd TOTLEY HISTORY GROUP**, talk by Hilary Widdowson, "Cherrytree Orphanage" 7.30pm, Totley Library. Non-members welcome.
- SAT 30th TOTLEY LITTER PICKING MORNING** 10-11am. Equipment provided. This activity is done at participants' own risk. Children must be accompanied by an adult. Meet Baslow Rd, outside Totley Library. All welcome.

### Answers to Musical Destinations, p.6:

1.China. 2. Spain. 3.Peru. 4.California.5. New York. 6. Australia.7. Hawaii. 8. Massachusetts. 9. Mississippi. 10.Kansas. 11.Dakota.12.Carolina. 13.Tulsa. 14.Texas. 15.Argentina. 16.Louisiana. 17.Barcelona.18.Tipperary. 19.Tennessee 20.Virginia. 21.Pennsylvania.22.San Francisco. 23.Kentucky.



# OUTRAM FIELDS

CINNAMON LUXURY CARE



# SHOW SUITE NOW OPEN

We are pleased to announce that our show suite is now open. Outram Fields is a brand-new luxury care home that brings first-class care and superior amenities to the community of Bradway. Outram Fields is part of the Cinnamon Care Collection Group, which is proud to be recognised as one of the Top 20 Large Care Home Groups in the UK for the 6th year running by independent reviewer carehome.co.uk.

**For more information or to visit our Show Suite  
call our friendly team today: 01144 934 334**



**At Outram Fields, people will always come first**

RESIDENTIAL CARE | DEMENTIA CARE | RESPITE CARE

**Luxury Care Home in Sheffield**

Outram Fields Care Home, 250 Twentywell Lane, Bradway, Sheffield S17 4QF

[www.cinnamoncc.com/outramfields](http://www.cinnamoncc.com/outramfields)



# Totley Deli

Where quality and friendliness count

Look out for our daily specials or join us for breakfast.

Why not come in and sample our wide range of hot & cold sandwiches and home made produce. Freshly made daily to eat in or take away. All produced from locally sourced suppliers.

- Fresh Roses bread delivered daily & available to order
- Selection of cooked meats sliced to your specification
- Superb selection of fine cheeses, preserves & pickles
- Moss Valley bacon & sausage
- Longley Farm dairy products
- Wateralls pork pies
- Freshly baked pastries

All available to take away.

Homemade scones, lasagne & quiches



If you are having a party or family gathering why not let us take the strain and provide a buffet for you.



51-53 Baslow Road, Totley Rise. S17 4DL.  
Call 0114 2364238

# S17 DECORATORS

## PAINTING & WALLPAPERING



**TRUSTED LOCAL RESIDENT WITH REFERENCES. FULLY INSURED. HIGH QUALITY PAINTING AND DECORATING ACROSS SHEFFIELD AND NORTH DERBYSHIRE. 35 YEARS EXPERIENCE.**



*"THANKS FOR ALWAYS GIVING US SUCH A PROFESSIONAL FINISH WHEN YOU DECORATE FOR US."*  
MRS M. (MILLHOUSES)

*"THANK YOU FOR AN AMAZING JOB. WE KEEP RECOMMENDING YOU!"*  
MR & MRS D. (BRADWAY)

*"WE HAVE COME TO CONSIDER YOU AS A FRIEND"*  
MR S. (DORE)

*"YOUR DECORATING WORK IS SPOT ON - SO QUICK AND EFFICIENT TOO! WE RELY ON YOU NOW."*  
MRS A. (DORE)

*"YOU'VE DONE A MARVELLOUS JOB DECORATING THE OUTSIDE OF OUR HOUSE"*  
MR & MRS W (DORE)

## CALL JULIAN TODAY!

07905 523499 OR 0114 2369664

JULIANCROOKES@GMAIL.COM  
LONGFORD ROAD, BRADWAY, S17 4LP

FIND ME ON FACEBOOK

# TopsforJeans

OPEN Monday - Saturday

Super soft knitwear, beautiful tops and so much more.

Call in or shop from the comfort of your own home on our website.

Catch up with the latest news on our Facebook site.



www.topsforjeans.co.uk  
164 Baslow Road, Totley. S17 4DR

# A1 Plumbing & Bathrooms

## Complete Installation Specialist



Info@A1plumbingandbathrooms.co.uk  
www.A1plumbingandbathrooms.co.uk

Tel - 07738 688 807

- ★ Plumbing Leaks, Bursts & Blockages
- ★ Taps, showers, Radiators, Etc
- ★ All Tiling And Plastering
- ★ Reliable, Fully Insured & Guaranteed
- ★ No Job Too Small, NVQ Qualified

25 Five Trees Ave, Dore, S17 3LW



**Editor: Phil Harris**  
Tel. 07956 858944 or email:  
editor@totleyindependent.co.uk

**Advertising: John Perkinson**  
Tel. 236 1601 or email:  
advertising@totleyindependent.co.uk

**Proof reader: Margaret Spencer**

We welcome items submitted for publication, which may be left at or sent to 'Totley Independent', 2 Main Ave, Totley, Sheffield S17 4FG

www.totleyindependent.co.uk

Printed in the UK by  
The Magazine Printing Company  
using only paper from FSC/PEFC suppliers  
www.magprint.co.uk

## 'Totley Independent' for December/January

The next issue of the Totley Independent will be published on

**Saturday 2nd December**  
**COPY CLOSE DATE for this issue**  
**will be**  
**Saturday 11th November**

Published by Totley Independent CIC. Totley Independent is a registered Community Interest Company, number 07750166. We welcome letters about local affairs and will publish as many as possible. Items will not be considered that are submitted anonymously. The views expressed are not necessarily those of the editor or the editorial staff and must not be attributed to them. © Totley Independent 2023