

# Totley Independent

Published continuously since 1977

www.totleyindependent.co.uk

December 2023/January 2024

No. 425



## Four more months of station construction work

*Chris Morgan writes:* If all goes to plan we'll then have a fully operational and bigger station from April. Work is proceeding on both the platforms and the new footbridge and lifts. Hopefully if you call in at the station you'll notice the progress that's been made.

Due to the various stages of the different aspects of the work all statements about car park opening are estimates. The contractors are doing their best to ensure that all users can use as much as possible for as long as possible. To ensure safe working we'll have to accept limited or no parking until April. Walk, get a lift or use a bike if you can. Disabled parking is available on Ladies Spring Grove. Otherwise Abbeydale Road South towards the Industrial Hamlet is wide enough on both sides to offer safe parking but allow an extra 10 minutes for the walk.

I'll be writing more about arrangements from April in the next two editions, but at this stage the Friends group remains unhappy about the lack of clarity regarding what's to happen around the entrance to the

platforms. There's a lot of detail still to be confirmed, not least what replaces the existing brick shelter and the fate of the giant leylandii – and if that goes, its stump.

The work now in progress is all about increasing capacity. As far as our station is concerned the one km stretch of single track created in 1985 formed an unnecessary bottleneck that was realised within 10 years. Railtrack were going to fix it in 2003-4, but they went bust in 2002! Since then passenger numbers have grown enormously and more trains are running than ever. More capacity is needed in four areas if railways are to make any impression on road transport.

**Station platforms** – from April we'll have two platforms taking six carriages. Other than Stockport, no stations between Sheffield and Piccadilly can take more than four. When our stopping trains run with six coaches there's difficulty fitting them into platforms at Sheffield and Manchester. A plan to add new platforms 15 and 16 at Piccadilly has been shelved. Sheffield will need completely replanning (*continued p.3*)

### UKRAINE HUMANITARIAN APPEAL

Apart from donating food, blankets and other essentials through local churches and other organisations, you can help by sending money to the Disasters Emergency Committee at any Post Office, or online at [DEC.org.uk](http://DEC.org.uk)



A Merry Christmas and a Happy New Year to All Our Readers!

# S17 DECORATORS

## PAINTING & WALLPAPERING



**TRUSTED LOCAL RESIDENT  
WITH REFERENCES.  
FULLY INSURED.  
HIGH QUALITY PAINTING AND  
DECORATING ACROSS SHEFFIELD  
AND NORTH DERBYSHIRE.  
35 YEARS EXPERIENCE.**



*"THANKS FOR ALWAYS GIVING US SUCH A PROFESSIONAL  
FINISH WHEN YOU DECORATE FOR US."  
MRS M. (MILLHOUSES)*

*"THANK YOU FOR AN AMAZING JOB.  
WE KEEP RECOMMENDING YOU!"  
MR & MRS D. (BRADWAY)*

*"WE HAVE COME TO CONSIDER YOU AS A FRIEND"  
MR S. (DORE)*

*"YOUR DECORATING WORK IS SPOT ON - SO QUICK  
AND EFFICIENT TOO! WE RELY ON YOU NOW."  
MRS A. (DORE)*

*"YOU'VE DONE A MARVELLOUS JOB DECORATING  
THE OUTSIDE OF OUR HOUSE"  
MR & MRS W (DORE)*

# CALL JULIAN TODAY!

07905 523499 OR 0114 2369664

JULIANCROOKES@GMAIL.COM  
LONGFORD ROAD, BRADWAY, S17 4LP

FIND ME ON FACEBOOK 

# Oven Wizards®

*We clean your oven...so you don't have to*

Call today to have your oven, hob, extractor or Aga professionally cleaned by Pippa Weir! Pippa's contact details are:  
**Tel 0114 258 3466 or mobile tel. 07716 992648**  
[www.ovenwizards.com](http://www.ovenwizards.com)

# TopsforJeans

**OPEN** Monday - Saturday

Super soft knitwear, beautiful tops and so much more.

Call in or shop from the comfort of your own home on our website.

Catch up with the latest news on our Facebook site.



[www.topsforjeans.co.uk](http://www.topsforjeans.co.uk)  
164 Baslow Road, Totley. S17 4DR



# Twelve Trees

*Always there to care*

## FAMILY RUN, AWARD WINNING, PREMIUM HOMECARE SERVICE

Twelve Trees is an innovative Homecare provider operating from our offices in Nether Edge. We offer something unique to our clients by providing bespoke care packages designed to meet your care needs. We are proud to have been providing care for the elderly for over 25 years.

### WE PROVIDE

- Household & Domestic
- Companionship
- Personal Care
- Mobility Care
- Respite
- Specialist Care
- Day Care
- Overnight Care
- Hospital Discharge
- Transport Service

### MEALS ON WHEELS

We offer nutritious and delicious home-cooked meals freshly prepared at our award winning residential care home, delivered to your door with a 30 minute care call.

### CONTACT US

Twelve Trees Homecare Limited,  
Suite 9, Cherry Tree Business Centre,  
Sheffield, S11 9EF  
Email: [admin@twelvetreescare.co.uk](mailto:admin@twelvetreescare.co.uk)

0114 349 7837  
[www.twelvetreescare.co.uk](http://www.twelvetreescare.co.uk)



#### Four more months of station construction work (from p. 1)

to make best use of the space available in time for electrification, supposedly by 2030 but 2035 may be a better bet.

**Trains** Twelve-coach trains run through St Pancras between Brighton and Cambridge. Elizabeth Line trains are all ten coaches through London and both lines are loading to capacity at busy times. We need longer trains here, six cars on most TransPennine, at least four on East Midlands and four may soon be necessary on our Northern services. More frequent or longer trains run into the problems above as well as lack of tracks.

**Track capacity** In the post-Beeching era British Railways were incentivised to lift unused tracks and junctions – including the one through our station and two of the four lines into Sheffield. As one example from hundreds nationwide, it's all but impossible now to restore both those tracks without rebuilding bridges, demolishing lineside structures and maybe moving the Tesco store and neighbouring commercial premises built on or too near the old track bed for safe railway operations at speed. The new loops being built at Bamford and by West View Lane will allow freight trains to pull over to allow passenger trains to pass.

**Car parking** Our car park was opened in 2013 in anticipation of completion of the current work. It filled up before the end of the year and was inadequate pre-Covid. It's unrealistic to expect a much bigger percentage to come by foot, cycle or bus. We may have double the present numbers by 2030. There have been early thoughts to help here but it will take time, patience - and money that's in short supply.

The inescapable truth is that if twice as many people want to use trains there will be major difficulties at many choke points across the country. That's not helped by so much Victorian infrastructure that's now 150 - 200 years old requiring major attention to meet modern needs.

Twice as many rail passengers would make a very small difference to the amount of road traffic in most areas. However, if we had twice as many trains into Sheffield more passengers would be attracted and that's what we aim to achieve.

#### Hope Valley Line Electrification

This was announced as a beneficiary from money saved on HS2. Wishful thinking! Northern are to order 450 bi-mode trains to enter service from 2028 - but 2030 seems more likely. They'll be able to use electric wiring where available. In our case that may be from Sheffield to just outside Totley Tunnel. The Midland Mainline electrification should call for over-run wiring from the junctions through our station and round the curve onto the new loop, so carrying on a short distance seems sensible. Other electrification projects look to be a lot easier and cheaper than our line beyond there.

All that remains is to wish all readers - rail users and Totley residents - a very Happy Christmas and good travelling from our new station in 2024.

*If you're a Facebook user, you can find and join us by searching for FoDaTS. It's a very active group and is updated frequently with topical information and comments. Alternatively look for our website at [www.fodats.net](http://www.fodats.net)*

*If you're not on Facebook and would like more information please send an email to our Secretary; [njbarnes@outlook.com](mailto:njbarnes@outlook.com)*

*Chris Morgan, Chairman  
Friends of Dore and Totley Station*

#### Community Speed Watch - CSW

A group of like-minded community-supporting folk in Sheffield have been trained by South Yorkshire Police to become 'Speed Watchers'. This has been facilitated by the City Council, who gain no financial income from this service. Their intention is to make road users even more aware of the speed limit in areas where accidents have happened, or the law is being ignored. The police have approved each site, one of which saw 84% of road users exceeding the limit.

The sites are chosen in response to the incidence of accidents, complaints or concerns from residents, reported either to the local councillors, or the police.

The 'Speed Watchers' wear hi-viz jackets, and a sign is

erected by the roadside. If a vehicle is estimated to be speeding, it will be checked by a speed gun. If the speed is over the allowed speed (see below) then the details of the vehicle will be recorded and forwarded to the police, who will check if there is a record of speeding. If there is not, the offender will get a warning letter. If there is one record, the offender will receive a letter, but, if there have been two previous warnings, the offender will receive a letter with 'a different wording'.

South Yorkshire Police have adopted a tolerant view to speed limits, in that a tolerance of 'speed limit +10% + 2' is allowed. For example, on Baslow Road, 30 mph +10% +2mph is allowed, so a motorist will not get booked for 35 mph, unless an offence or RTC has been committed in which case the motorist can be booked for exceeding 30 mph. Note: this tolerance is NOT allowed by all Police Forces!

Roger Hart

#### Whose gun?

We've been sent a press cutting from Sheffield resident Alex Dowling concerning a diecast model naval gun, pictured below. The press cutting, taken from the September 2023 issue of *The Collectors' Gazette*, describes the model as capable of firing ball bearings 'at a surprising velocity!' Thought to originate from the 1950s, the label on the model's box states that it was made by 'Totley Products, Baslow Road, Totley'.



No-one - including Totley History Group - has ever heard of such a company, and Mr. Dowling asks whether, through the pages of *Totley Independent*, we might find "one or two readers who may have their memories jogged and be able to provide details of the manufacturer." So if you know anything about this company and its products, please get in touch - the contact details are, as usual, on the back page.

**Scrivens Quality Greengrocer**  
Free delivery service available 6 days per week

Mark Billingsley - Owner 37 Baslow Road  
Home Delivery - 0114 2367116 Sheffield S17 3DL  
Trade Enquiries - 07885 866376 [scrivensstoyou@gmail.com](mailto:scrivensstoyou@gmail.com)



# Totley Pharmacy

**Your local independent pharmacy  
serving you for 26 years.**

# 24/7

## prescription collection

**Call: 0114 236 1070**



## Update from Olivia Blake MP

As we head into the festive period, I wanted to update you on what I have been up to over the past few months in Parliament and in Sheffield.

Firstly, thank you to everyone who contacted me about the heather burning on the moors. I received

a host of emails from constituents – many with respiratory problems – rightly complaining about the poor air quality across the constituency. In 2021, the government introduced new regulations for licensed burning on deep peat. And yet the burns have continued. In Parliament I asked the Government to do the right thing and stop this practice – which is bad for the natural environment, bad for the climate emergency, and bad for people in our constituency. I also wrote to Sheffield City Council and Natural England to see what more enforcement can be undertaken.

Over the summer I visited Dove Stone Nature Reserve, one of the RSPB's peatland restoration sites to look at the work being done there. It was great to see the progress that had been made and brilliant to be able to plant some sphagnum moss myself!

I was overjoyed to hear that the Government has been forced to scrap plans to close over 1,000 ticket offices! This is a huge victory to all the unions and Disability Rights groups across the UK who have been campaigning on this. Thank you to everyone in Sheffield Hallam who responded to the consultation and to the Mayor of South Yorkshire for challenging these plans. I won't stop fighting until we have a fully accessible service that puts passengers before profit. I also welcomed the Mayor's decision to reinstate multiple daytime bus services. Many of these routes are lifelines for the people of Sheffield Hallam.

I visited Dore and Totley Station with Louise Haigh MP for an update on improvements to the station from Network Rail and their contractors. It was great to see the progress being made and hear about the difference the finished station will make.

I also visited St Luke's Hospice. I was absolutely blown away by the work they do to support people at the most difficult of times. I previously visited during the pandemic when they were unable to offer their day services. It was great to see first hand the care of the staff and volunteers.

I am also pleased to have been elected as Vice Chair of the Climate APPG. I am looking forward to working with colleagues across Parliament to campaign for the transformative, democratic and just transition we so urgently need. As part of this, I questioned Government Ministers in Parliament on the need to broaden and increase the capacity of offshore wind.

When the Energy Bill returned to parliament for its final stages, I was proud to support important amendments to the Bill to prohibit new coal mines and oil and gas fields; phase down UK petroleum; increase energy efficiency measures; introduce a National Energy Guarantee; support local community energy; and leave the Energy Charter Treaty. We are in a climate emergency. We are also facing the worst cost of living crisis in decades. The Energy Bill was our opportunity to tackle these issues head on - providing affordable energy to all, whilst speeding up our transition. But sadly it has fallen short.

I voted to defend important changes to the Anti-Refugee Bill, which would have provided much needed protections to some of the most vulnerable asylum seekers. Sadly, these changes were voted down and despite joining colleagues to vote against the Bill, it was passed through Parliament. We must continue to fight these dangerous new laws and protect the right to asylum for everyone fleeing war and violence. I have also been campaigning for a long-term housing plan

for Ukrainian refugees, and all those fleeing persecution. I joined colleagues to write to the Home Secretary to express our ongoing concerns about the Bibby Stockholm barge and request an urgent visit to meet residents and assess living conditions.

Thank you for reading my update. Please do get in touch if there is an issue you are facing, or campaign you would like me to join.

*Olivia Blake - MP for Sheffield Hallam*  
[olivia.blake.mp@parliament.uk](mailto:olivia.blake.mp@parliament.uk)  
<https://www.oliviablake.org.uk/>

## Totley War Memorial

**Sunday November 12 2023**



# John Heath & Sons

AN INDEPENDENT FAMILY FUNERAL BUSINESS

## Some time.....

You will probably have the responsibility of making funeral arrangements. No one looks forward to this responsibility, but the death of a family member or friend brings with it an obligation that must be met. There are people who can help you meet this responsibility. We have been helping people combine the different aspects of the funeral into a meaningful service for over 125 years.

Please Call Day Or Night

**(0114) 272 2222**

Head Office - Earsham Street

Also at Meadowhead, Ecclesall Rd,  
Crookes and Stannington

[www.johnheath.co.uk](http://www.johnheath.co.uk)

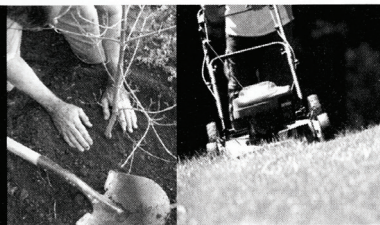


# Tristan Swain

Garden Services and Maintenance

Established 1984

Unit C4 Sheaf Bank Business Park  
Prospect Road Heeley  
Sheffield S2 3EN  
Tel/Fax: 0114 255 4689  
Mobile: 07831 802 539  
Email: [tristan@tristanswain.co.uk](mailto:tristan@tristanswain.co.uk)



[www.tristanswain.co.uk](http://www.tristanswain.co.uk) Public Liability Insurance Waste Transfer Licence

# BRADWAY INSTALLATIONS

Kitchens, Bathrooms and everything in between

**Complete Kitchens** Installation or supply & installation

**Kitchen Refits** Replacement worktops/sink/hob etc  
Worktop/cabinet repairs

**Bathrooms - Cloakrooms - Domestic plumbing**

**Tiling - Laminate/Vinyl flooring**

**All work undertaken is fully insured and guaranteed**

**Ring Peter - 0114 236 5995**

**Mobile - 07766 411355**

John Collins

# Cabinetmaker

Fine furniture, antique furniture restoration, fitted  
wardrobes, alcove units

0114 2585355

[www.cabinetmakercollins.com](http://www.cabinetmakercollins.com)



For  
Windows  
With Style

Sheffield Factory Showroom

106 PROSPECT ROAD  
HEELEY, SHEFFIELD

Sheffield (0114) 258 5496  
Rotherham (01709) 512113

# LIBERTY FOODS

Caterers  
Quality Meat Shop  
& Fresh Farm Produce

Fresh and Frozen Prepared Meals  
Fresh Meat and Poultry  
Outside Catering  
Home Delivery

253 Baslow Road, Sheffield, S17 4DU  
Tel: 0114 2360 583 Mobile: 07801 346 455  
Email: [damianbower@liberty-foods.co.uk](mailto:damianbower@liberty-foods.co.uk)

# PhysioFOCUS

at Toley Rise Dental Practice  
85 Baslow Road,  
Sheffield, S17 4DP



**Physiotherapy** treatment available for:

- Back and neck pain
- Sports injuries
- Sprains and strains
- Joint and muscle pain
- Arthritic pain
- Whiplash
- Repetitive strain injury
- Headaches

**Appointments: 0114 2360333**

Also available:

- Pilates classes
- Pilates 1-2-1
- Golf Fitness Screening  
(as used by consultants to UK,  
European and Australian PGAs)

For more information please call:

Emer on: 07792 422909

Rachel on: 07956 908454

## Totley Show 2023

We were watching the forecast very closely all week prior to the Show on Saturday 16 September! One day it was saying sunny, then drizzle all day but when the day came we were blessed with fine weather.

That was a great relief to us all as we were using the outside area, called the MUGA (Multi Use Games Area - better known as an all weather pitch to us older ones!) for the charity stalls. It is the first time we have used that area but having so many entries now, the two rooms in the school are taken up with all the entries we have.



*Mr Men cake*

were so busy. There was a bouncy castle on the school field and we had a local teenager and her family running a laser game on the sports field, aimed at raising funds for a trip she is making next year to Borneo.

We were very pleased and honoured to welcome the Lord Mayor and Lady Mayoress to officially open the Show for us. They stayed much longer than we were expecting and it was lovely to see them walking around, talking to many people, looking at the exhibits, stalls and watching the entertainment in the hall. They even spent time holding the large snake, which was part of the reptile stall.



*The Lord Mayor opening the Show*

We no longer had access to display boards from the council but were grateful to Dore Show for lending us their 'A' boards. We used to have a number of boards ourselves but had to scrap them several years ago when we were restricted for space and they were becoming too unstable to use. Dore's boards were adequate for our needs but in the longer term we may need to acquire some for ourselves. If anyone has any ideas then please contact me on my email address below. The biggest issue would be storage, as all our equipment is very compactly

stored in a large shed lent to us by All Saints Church.

We were well supported by the local shops and businesses with prizes worth over £400 in total: Activ Physiotherapy, Totley Co-op, Deb Leonard Tropic Skincare, The Ironing Parlour, Kenneth's Balloons, Liberty Foods, Martin Scrivens, Moraira (Rendezvous), Omega at Abbeydale, Outram Fields Care Home, Shepley Spitfire, Tops for Jeans, Totley Deli, Totley Pharmacy, Totley Rise Newsagents and Post Office and Totley Tails and Whiskers. Please support these local businesses and thank them for donating to the Show.

In the poetry class a poem was entered about Totley Show and although it did not win, I thought it was worthy of reproducing here: -

### ***The Totley Show***

The Totley show is here again  
Come summer sun, or wind or rain!  
The organizers check their books  
Is every entry as it looks?  
Are cooking, craft and veggies all  
In proper order, big and small?  
Are children's models intricate  
Displayed with space to make them fit?  
Are paintings up to show their best  
For every age group, so they test  
The judges who have quite a task  
To make a choice, but none is last,  
Since all get stickers to display  
Their noted efforts on this day!  
The tables, chairs and teas and cakes  
Are set out temptingly and makes  
The passing person stop and eat  
A tasty morsal, then retreat  
To hear the singing, band, and more  
Before a visit round the hall  
With exhibits from one and all,  
The woodwork, sewing, jam and cakes  
So many that it really takes  
Your breath away; the quantity  
Of Totley's best for all to see.  
Then prizes, well deserved are made  
Echoed with shouts which are relayed  
Outside to those who did not hear  
Their name, a winner for this year!  
A vote of thanks, so well deserved,  
To organizers who endured  
Unspoken crises, but preserved  
The optimistic attitude  
Of Totley's spirit and the mood  
Of friendship, love and gratitude.  
An auction swift to end the day  
To rid the hall of things, the way  
To raise more funds to raise a smile  
Then home again, to rest a while!

As usual we did not get everything right and there is always room for improvement! I believe we ran out of cakes very early in the afternoon, and in particular we should have more small cakes for children. Next year it gives us something to improve on! And if anyone has other suggestions, do not be afraid to email me at the address below with your thoughts.

Thank you to everyone who came on the day whether entering in the morning, walking round the exhibits, watching or providing the live entertainment or volunteering over the two days. We were blessed with several more volunteers this year which were much needed.

As in previous years we made a surplus and this will be distributed to Transport 17, the Totley Scout hut refurbishment fund and Totley Primary School Funds.

As usual I would like to thank the committee who do a brilliant job preparing for the Show for nine months from January each year.

Next year's Show will be on Saturday 14 September so make a note in your diary!

*Mick Warwick, Totley Show Chair*  
[totleyshowchair@hotmail.com](mailto:totleyshowchair@hotmail.com)

# Look What The Dogs Brought In

Cast:

RONY A Bit of a Young Dog  
 BLUE A Greyhound in his slips (Henry IV Part....)  
 HEAD EATER The Editor (known as 'HEAD') Good-looking, in his way.  
 SALLY A Friend to all  
 FIONA A sheep

Prologue

HEAD Before we settle down? Thank you. From now on, I want my *Independent* to be more cheerful! And to always look on the bright side! (And at least we don't live in Brightside!)  
 You have space for exactly only 15 questions and exactly 681 words.  
 Starting — now!

**1**  
 HEAD Who sheds most hair?  
 BLUE I don't shed much, being a greyhound.  
 RONY I've already shed mine. I am told it is attractive in a man who works on the radio.  
 HEAD You don't work join the radio. You got sacked.  
 RONY Shhh! No one's noticed.

**2**  
 HEAD Who is a bit of a young dog in Totley?  
 BLUE Me because Totley people stroke me and rub my ears and kiss my nose in Gilly Woods.  
 RONY Me too.

**3**  
 HEAD Are we now in the Dog Days of the year?  
 BLUE Everyday is a Dog Day.  
 TOTLEY LIBRARIAN None of you is in the Dog Days of the year, because the Dog Days are in ...  
 RONY Who are are you?  
 TOTLEY LIBRARIAN I am A Totley Librarian and if you are that same Rony from 1953 you have fines of £1000 on that book you borrowed from Dewey 306.7 which is not the Section for DOGS

**4**  
 HEAD At night, who is the more miserable at night?  
 BLUE Me. I whine!  
 RONY Not me. I wine!

**5**  
 HEAD How many young pups have you got?  
 RONY I've got 3. And 5 or 6 grandchildren (depending on when you are reading this.)  
 BLUE I've got no pups, and I won't ever have any, because I left my tranklements in Owlerton.

**6**  
 HEAD Who is the better biter when you go out biting?  
 BLUE Me. I've had 60 teeth in two lots.  
 RONY I've had 52 teeth in two lots. My top set is still fine but —  
 HEAD No attempted vulgarity in the *Totley Independent* (published continuously since 1843)

**7**  
 HEAD Who's more religious?  
 BLUE I am, because I am still God backwards.  
 RONY I've not been religious since that Matins in 1952, when the Vicar of All Saints lost his dog collar.

**8**  
 HEAD Apart from Blue, Blue, what is your favourite dog's name?

BLUE Not Blade.  
 RONY Nanny and Grandie's dog up Long Line was called Sally and she dug up postmen in the snows of 1947.

**9**  
 ENTER SALLY  
 SALLY Sally's a nice name for Sallies.

**10**  
 HEAD Who's getting older faster?  
 RONY Blue. Because this year he is 4, which is 28 in our years. The year after next year he'll be 42 and I'll still be 37.  
 BLUE What about when we're dead though?  
 We don't have ages in heaven and that means if you get to be old you are old for ever but if say you are 20 when you go, you stay 20 for ever?  
 RONY You can't go to to heaven anyway. Dogs can't.  
 BLUE You'll not be up there yourself if what people say about you is true.  
 RONY It is true Blue. Thank dog!

**11**  
 HEAD Who's longer ?  
 BLUE Me. I am 1 and a half metres including my tail  
 RONY I was 6 feet in 1973 but I'm only 5 feet 10 now and no-one can explain why.

**12**  
 HEAD According to the end of George Orwell's Animal Farm, which of you two has the best legs?  
 BLUE Me, because four legs are good.  
 RONY Me because two legs are better.

**13**  
 HEAD Ask me a question for a change?  
 BLUE Do dogs have gods?  
 RONY Or do gods have dogs?

**14**  
 ENTER FIONA, a famous lost sheep  
 FIONA You're all baaaarmy.

EXIT FIONA

**15**  
 HEAD That's 15 scenes and 677 words! Soz. We have, thank dog again, run out of wo...

by Rony, Blue, A HeadEater, Fiona, One of the Totley Sallies.



**A1**

**Plumbing & Bathrooms**  
 Complete Installation Specialist

Info@A1plumbingandbathrooms.co.uk  
 www.A1plumbingandbathrooms.co.uk

**Tel - 07738 688 807**



- ★ Plumbing Leaks, Bursts & Blockages
- ★ Taps, showers, Radiators, Etc
- ★ All Tiling And Plastering
- ★ Reliable, Fully Insured & Guaranteed
- ★ No Job Too Small, NVQ Qualified

**25 Five Trees Ave, Dore, S17 3LW**

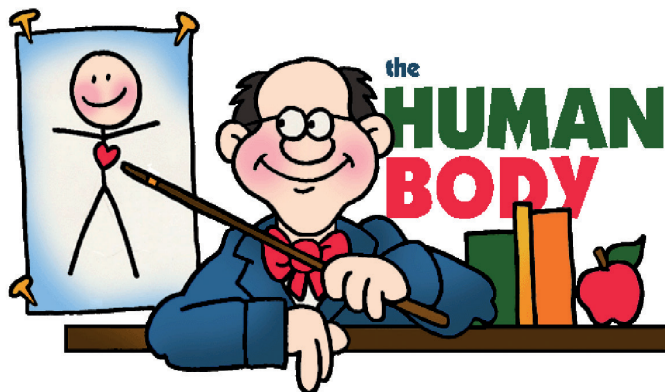


## Heavenly Bodies, And What To Do With Them

*This article talks about the donation of bodies for medical research. If you think you might find it upsetting, then best not read on!*

There, you have been warned but I hope you will read on. Back in 2010 I had a complete hip joint replacement. Before it there were months of increasing agony and I finally had to bite the bullet as they say. It was done on a Monday morning and I opted for general anaesthetic saying I wasn't particularly interested in hearing what the team had been up to that weekend. So, it was a couple of hours of unconsciousness for the surgery, four days in hospital, and I was able to walk my first mile on crutches eleven days afterwards. It was, and still is, a complete pain-free success. As a lifelong pen pusher and desk jockey, I wondered how on earth they did all that so effectively and how did they train the next generation of surgeons and other medics?

I was thus motivated to arrange the donation of my body to the Medical Teaching Unit at University of Sheffield. I filled out all the forms required under the Human Tissue Act 2004 and the arrangement was confirmed. So, I was a bit disappointed to get a letter at the end of October this year to say that the University is changing the way it teaches human anatomy, and that they will no longer be using donated bodies. Beforehand, I had visions of bits of me living on for a few more years somewhere on Western Bank, pickled in jars or deep-frozen, just poised waiting to be defrosted in the national health interest. As the old joke goes, there's no problem with dying; it's just that you're so cold and stiff the next day.



I'm now pondering how they will be doing medical training in the future. I suppose that 'sitting by Nellie', information technology, animations, models, dummies, artificial intelligence and virtual reality will all play a part in some way. But I was still left wondering what to do with me and the range of fascinating symptoms I can offer medical trainees. Somebody, somewhere must be able to find a use for me I thought.

Research led me to an NHS organisation called the National Repository Centre in Nottingham. I contacted them and was told I could still bequeath myself to them so that the next generation of healthcare professionals had access to real human tissues. I'm late seventies and was pleased to see there's no upper age for donations. I and bits of me could be used for practice in life-saving and new surgical and medical techniques. I might also be used for testing new approaches that couldn't possibly or ethically be tried on living patients. There are safeguards so that I can't be identified in any images of my body or body parts. I can opt to be kept for up to two years, or even longer for all parts if I wish. Large parts when finished with are returned to the Centre and kept for the time when the entire set of remains are no longer needed and can be cremated or returned to family to make their own arrangements.

Just to be sure, my family, friends and executors know about the best way I have chosen to be as immortal as possible. The GP has been told and it's in my will. I'm pleased I've done it and, in time, I look forward to being really useful for once!

Mike Peart



## Totley History Group

September's advertised programme on the role of Sheffield's Hospitals in World War 2 had to be postponed and will be re-booked at a later date. We were fortunate that Martin Rowley could come at short notice, and he gave a fascinating talk on the Yorkshire Air Ambulance service past

and present, followed by a lively and informative question and answer session.

Dr Jenny Stephenson was our speaker in October and sales of her book about the History of Water raised a considerable sum for the Wateraid Charity that she supports.

The group had a display at Totley Show in September, featuring the history and photographs of Totley Hall Lane and Hillfoot Road. This was a section of the ancient track connecting Holmesfield with Dore, and existed long before the advent of Baslow Road. The display, marking the 400 years of Totley Hall, was transferred to the library where it remained for a few weeks.

### Future Meetings

December 18th/19th: **Spitewinter Concert.** Ecclesall Parish Church, 7pm. Sheffield Folk Chorale celebrate winter with songs across time and place Tickets £8 from graham.pratt2013@gmail.com

January 24th: **Painted Fabrics** with Hilary Widdowson. The story of how a community was created in Norton to give employment to the injured military following World War I.

February 28th **Victorian Pioneers part 2** by Val Hewson. The development of Sheffield's Public Library Services.

Meetings are held in Totley Library on 4th Wednesday of each month at 7.30, though please note December's exception! All are welcome

Pauline Burnett

**Christmas**  
at All Saints Totley

**7<sup>th</sup> – 9<sup>th</sup> Dec**  
See our website for booking slots

**The Christmas Experience**  
A free and immersive walk-through tour of the first Christmas

**Sun 17<sup>th</sup> Dec**  
5pm & 7pm

**Carols By Candlelight**

**Fri 15<sup>th</sup> Dec · 8.30pm**  
**Carols in the Pub**  
at the Crown

**Christmas Eve**  
2pm  
**Family Carols**

**Christmas Eve**  
11:30pm  
**Midnight Communion**  
A candle lit traditional service

**Christmas Day**  
9:30am  
**All Age Service**  
Followed by a short communion service

  
allsaintstotley.church/christmas



## Chapel of Ease, English Martyrs in Totley

Usual Mass Times: Tuesday 10 am, Saturday Vigil 5pm

### CHRISTMAS DAY MASS 9am

#### Advent is upon us!

Christians everywhere are preparing for the birth of Christ, Our Saviour.

But it is so easy to get caught up in the commercial aspect of Christmas and to forget the real reason for the celebration.

Instead of making lists of food needed, presents to buy, decorations to hang we could consider those for whom Christmas can be a wretched time.

Loneliness, Lack of money and Homelessness have an even greater impact at Christmas.

If you can afford to, consider buying a present for one of the charities or food banks in Sheffield.

Invite a neighbour who lives alone, into your home to help with the Christmas decorations.

Time and friendship are the greatest gifts. Make memories at Christmas.

**WE WISH YOU ALL A HAPPY AND HOLY CHRISTMAS  
AND A PEACEFUL NEW YEAR!**

JESUS IS THE REASON FOR THE SEASON!

Barbara Richardson, Parishioner

## Dore and Totley United Reformed Church

Totley Brook Road, S17 3QS

### JOURNEY OF THE MAGI Springs Dance Company

*Journey of the Magi* is a sparkling Christmas production of dance, theatre, song and poetry, inspired by T.S. Eliot's poem. A reminder, not only of the famous journey the wise men made following the star to Jesus, but also of the journey so many of us make every year in preparing for Christmas day. A mix of laugh-out-loud funny, moving and entertaining scenes offer a chance to reflect and refocus. Enjoyed by adults and children alike.

Tickets available now from Elaine Ferguson, 07929 720977. Adults £5, children under 16 years free. Find details of the Springs Dance Company online at [www.springsdancecompany.org.uk](http://www.springsdancecompany.org.uk)

#### Grand Jigsaw Sale

Thank you EVERYONE for all the donations of jigsaws and for coming along to buy jigsaws. We raised over £1000 for our church charity, Sheffield Health Action Resource in Ethiopia.

#### Christmas Services at Dore and Totley URC

December 3rd, 10.30: Service led by Rev. Zaidie Orr including decorating our Christmas tree and communion.

December 17th, 10.30: Carol service led by Fiona Green and Anne Dale

Christmas Day celebration at 10.30 led by Rev. Barry Welch

All welcome!

Elaine Ferguson

**Apple Landscapes and Paving**

Established 19 years

Specialise in full garden makeovers.  
Patos, paths, walls, turfing, fencing.

Check out our FB page.

07782167540  
01246237505

## Is Akley Bank Washing Away?

I have written a couple of articles on the Bank, both about it falling down, but this one is most topical. The Methodist Church has had to pay thousands of pounds to have the banks of the Old Hay Brook reinforced, to prevent them from washing away, just before the storms. As a result of the storms, some of the bank on the North side of the Brook, near the white bridge, has eroded, and a tree has fallen across the brook (photo below). It is suspended over the path which runs alongside the brook, which has been fenced off.



The question is, who is responsible for cutting it down, and restoring the river bank? As I understand it, the owner of the freehold of the bank is responsible for not only the bank and trees, but half of the Brook as well. Dom Harris and I researched the landowners a couple of years ago, by paying search fees to the Land Register. The owner of the land affected, at that time, was a person outside Sheffield. Another person owns the land further downstream, with one local person owning one plot from Grove Road to Marstone Crescent. I understand Sheffield City Council are seeking the owner of this plot, to break them some bad news.

Roger Hart

## Holmesfield Church Walking Group

### Chatsworth Walk

On Wednesday 6th December at 10am Robin Greetham will lead a walk starting from the Wheatsheaf pub in Baslow (DE45 1SR). The short walk goes to Chatsworth House and back via a slightly different route.



The longer walk goes to Chatsworth House, then up the steps to the Hunting Tower, then along the edge returning to Baslow via the Jubilee Stone.

Both walks will stop at Chatsworth for coffee. The cost of the walk is £5 and the proceeds go to Holmesfield Church.

If you wish to come just turn up on the day. If you have any queries please phone Robin on 01246 412767.

There is no walk in January: the next walk is on February 7th.

## Friends of Gillfield Wood

### Of Birds, Butterflies and Bats – Guided Walks through Gillfield Wood

*May 2023: A Bird and Butterfly walk with Stuart Davies*

Meeting at 8.30 on a fine sunny morning with no clouds in sight we had our first birds, distant House Martins, a Sparrow Hawk fly over and views of a Nuthatch at its nest hole. Continuing along through the fields towards the wood we were treated to Blue Tits at their nest hole in an Ash tree and on the upper branches a good view of a Treecreeper. As we carried on two Curlew flew past calling, and there were Goldfinches, Magpies, Wood Pigeons, Carrion Crows and a Jackdaw.

Entering the wood at Entrance 3 (the path through to Storth House), we could hear Goldcrest, Chaffinch and Chiffchaff, and further on Blackcaps were singing. Other species were Blackbird, Robin, Song Thrush, Dunnock, Jay, Great Tit, Long-tailed Tit and Coal Tit. House Sparrows were around behind the Rowan Tree Dell houses and Starlings were about with noisy young.

Near the end of the walk at the Scout Hut, two Mallard were on the brook and there was a brief call from a Great Spotted Woodpecker, followed by Swifts above us and a Heron over the wood and a brief call of a Bullfinch.

As for Butterflies, there were a few species around: Orange Tip males and a Green-veined White were in the field behind the houses and nearby a Speckled Wood sat in the sunshine and a Small White in the same area. As we ended the walk a Holly Blue flew over the hedge near the Scout Hut and as I walked back through the wood a Comma was on the path.

Hopefully all participants enjoyed the morning.

Stuart Davies

\*\*\*\*\*

*September 2023: A Bat Walk with Dave Gash*

On a balmy September evening we joined Ecological Consultant Dave Gash for a bat walk in and around Gillfield Wood. Dave informed us that there are 18 different types of bat in the UK and we were hopeful of seeing some of them that night. The Bat walk is a popular event – as we set off at around 7.45, I counted 42 folk passing through the gate, many of them children.

The sun had set and the western sky turned to gold as we cross the open field to the stile, paused and listened. No sign of any bats yet – the grown ups were quietly murmuring and children chirped with suppressed excitement – suddenly a bat sweeps over our heads and the group erupted. 'Pipistrelle' called Dave, and Chris nodded in confirmation. I learn that a single pipistrelle can eat 3,000 tiny insects in just one night. That's impressive!

Anticipation was running high as we took turns to clamber over the stile to enter the now shadowy wood. Torches illuminated our route as we threaded through the trees. Clutching at our lights, we clustered in a loose circle listening to the wood – a strange sight for anyone passing by! The bat detectors emitted signals – "they're here" – the children called out – this time its a soprano pipistrelle – a bat with a slightly higher pitch. Back along the track, past the interpretation board, we made a last stop at the brook. "This is where they like to hang out" said Dave, so we were hopeful. After a while, a whiskered bat was spotted. Satisfaction! It was getting late so we headed back home along the lane.

This was a special evening and the weather was perfect for Bat spotting. Thrilling, but so is walking through woods in the dark with a group of friends. Woods at night are mysterious – slightly spooky?

So thanks to Dave Gash for a memorable evening and for offering to lead another walk in the spring. If you are interested, do make your views known by contacting us - fogwsecretary@gmail.com

# Our minor service helps stop little parts of your Volkswagen becoming big problems.



## Minor service

# £129

Even Volkswagens need a service every now and again. The recommended service interval is every 12 months or 10,000 miles (whichever comes first). We only use Volkswagen Genuine Parts® which come with a 24 month warranty as standard.

Why not combine your minor service with an MOT? Prices start from just £178 for models up to and including 2.0 litre engines.

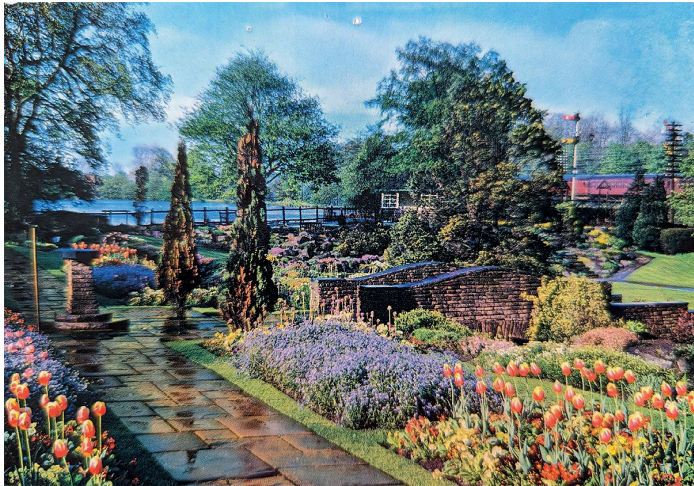
Price includes Genuine Volkswagen oil filter, oil change with replacement sump plug or washer, screen wash top up, vehicle diagnostic check, vehicle check list including lights, instruments, bodywork, glass, locks, battery, coolant levels, drive belts, braking system, steering, hoses, drive shafts and exhaust system, service book stamp or Digital Service Schedule entry and road test. All prices include parts, fluids (if applicable), VAT and fitting. Offer limited to 4 cylinder engines up to 2.0 litres, Petrol, petrol hybrid and Diesel. Available for a limited time only. Terms and Conditions apply. For details call 0114 2446589. Service operations can vary between vehicles depending on specification and factory fitted equipment. The word "Volkswagen" and the phrase "Volkswagen Genuine Parts®" are registered trade marks of Volkswagen Group UK Ltd and Volkswagen AG. Autohaus Dolby Ltd is an independent Volkswagen specialist and uses the terms associated with Volkswagen Group UK purely as descriptive words and implies no direct association with Volkswagen AG, Volkswagen Group UK Ltd or its franchisees.

## Autohaus Dolby Volkswagen Service

0114 2446589  
Barleywood Rd,  
S9 5FJ  
[autohausdolby.co.uk](http://autohausdolby.co.uk)

## Postcard from America

Sheffield Vulcan Rotary Club are rejuvenating Beauchief Gardens, a Heritage garden next to the Heritage Industrial Hamlet, at the end of the dam. A neighbour called me one day to say he had something for me, an air mail envelope, containing the high quality, unmarked postcard image (below) showing the garden (and its name) in, we think, about 1960.



On the outside of the envelope, written across one corner was a name and an American post code. I wrote to the address, but had a hunch to try Google. The writer is an American female film actress and producer, Adrienne Balcom. Contact was made. She found this postcard, amongst 1500 others, which her deceased mother had left. Why, she doesn't know. She decided to post it to the address, which she found, again, on Google. The owner of the property had no idea his address was attached to Beauchief Gardens, on Google! Our Club is using the photo to seek funding to achieve the same view, after extensive work which is needed in restoration.

*Roger Hart*

## Ask Your Pharmacist

I have had a recurring nightmare for many years, wherein I arrive at my A-level school, even though in the dream I am clearly a post-graduate. The perturbing part is that I always arrive but never know what time the lessons are, or in which room, so I go home worried about failing the course. Not being one to deeply analyse my dreams, I tended to ignore them, and move on with a shiver. The reason for sharing this is that this past year they have become more relevant.

At the start of the year, Jasmine and I started a new university course. Although we have continually studied to keep up with current developments and improve our practice, going back to 'full-time school' was certainly a readjustment. Trying to keep up with deadlines, word counts and pre-lecture notes is something I hadn't needed to do in many years, and Zoom lectures were just science fiction in my time.

Trying to do all this while running a busy pharmacy in the current NHS chaos was certainly a challenge. Focusing for long periods on one train of thought while drowning out all other noise while studying is totally opposite to managing a pharmacy which involves being aware of and managing many different parts to ensure each is safe and efficient. On many occasions I did think the recurring nightmare had been a portent of this year and considered quitting. However, since the benefits of the qualification at the end of the rainbow were so important for us and our patients, we decided to soldier on and battle to the end. I am very proud to say that we both have passed the course!

The reason for starting this new course was to achieve prescribing rights, allowing us to prescribe any medicine we want. This is totally different to the current situation whereby we can only dispense what is on the prescription. Though we are allowed to sell certain medicines to patients, this is from a very limited list. Everyday, pharmacists are faced with patients asking for treatments, and having to send them away

as pharmacists cannot prescribe the appropriate medicine. The patient has to make an appointment with a doctor to get the medication. This is extremely frustrating for pharmacists as we are not allowed to provide the best care for patients. It is also clearly unsatisfactory for patients who experience wasted trips and delays in getting the right treatment. It is also a totally unsatisfactory situation for the NHS as a whole. Many visits to GPs are for minor illnesses which could easily be treated by visiting a pharmacist.

This is extremely critical in the current situation where data shows that a third of patients wait over two weeks to get a GP appointment, and over a million patients a month wait over four weeks. Not only is this a very long time to see a doctor: it has further implications for our health and the NHS. Many people who feel frustrated waiting for a GP appointment visit A & E instead, further exacerbating an enormous problem. Also, any GP appointment taken for a minor illness means a patient with a more serious illness has to wait longer to be seen.

So serious a problem is this, that the government has made it a central part of their primary care recovery plan. A significant aspect of this plan is to ask people to visit pharmacies instead of GPs. However, as I have said above, this can be frustrating all round. To help, in 2024 pharmacists will be allowed to prescribe for seven specific conditions, improving patient access to acute care. However, this scheme is again very limited. Another plan is to train more pharmacists to become prescribers. However, the shortsightedness of the NHS has meant this plan has not improved acute care, as most of these pharmacists have left the stress of community pharmacies to work in GP surgeries. Very few pharmacist prescribers are actually working in community pharmacies where patients can quickly see them.

We are hugely excited about the enormous benefits our new qualifications will provide for us as a team, our patients and local GP surgeries. In short, our ability to prescribe medicines will offer our community another and quicker route to access acute care. This will free up more GP appointments for patients with chronic illnesses that specifically need to see a doctor. Although we can prescribe any medicine, this will not be the approach we take, as this would not be appropriate. While we have the legal right, and passing the course shows our knowledge, both myself and Jasmine are humble enough to acknowledge we do not have the experience or expertise of local doctors. Also, while we can prescribe antibiotics in the appropriate circumstances, to do so indiscriminately would encourage antibiotic resistance. We also have limited access to your medical notes, although being registered with us as patients for your prescriptions does give us far more of the picture and allows to offer more options. So while there will be professionally self-imposed limitations to the service for your safety, we feel that this hugely improves the care we can provide to you. The future of healthcare is available to you now.

I have also learned that dreams aren't always what they seem, and I had no need to worry!

*Tajinder Singh*

### **RICHARDS TELEVISION, SATELLITE, VCR, DVD REPAIR OR INSTALLATIONS**

- City & Guilds London Inst. Fully Qualified
- Over 25 Years Professional Experience
- Most Makes & Models Repaired. No VAT
- For Prompt, Friendly Service Ring:

**0114 2876806**

**Ask for Richard. Ex Bunker & Pratley**

# THE 37th TOTLEY SHOW RESULTS

## September 2023

**Overall Best in Show: Sammy Jones for Quilting, in the Handicraft Section**

### HANDICRAFTS: Best in Class: Vicki South

	FIRST	SECOND	THIRD
1. Knitted or Crocheted Item	Sue Bridgens	Lynn Hallam	Zoe Lawton
2. Decorative Cushion	Hannah Corbey	Lynn Hallam	Sue Bridgens
3. Soft Toy	Vicki South	Stella Kelly	Pamela Challis
4. Sewn garment	Sammy Jones	Sue Bridgens	Judy Needham
5. Cross Stitch	Lynn Hallam	Zoe Lawton	Betty Sables
6. Quilting/Patchwork	Sammy Jones	Pamela Challis	Sue Bridgens
7. Greetings Card	Jillian Round	Catherine Wrigglesworth	Zoe Lawton
8. Open Handicraft any medium	Pamela Challis	Jean Walker	Judy Needham

### DOMESTIC SECTION: Best in Class: Rupert Chami

	FIRST	SECOND	THIRD
9. A Cake (any recipe)	Barbara O'Connor	Christine Arnall	Pamela Challis
10. Victoria Sandwich	Judith Barton	Sue Bridgens	-
11. Dundee Cake	Liz Hayden	Pamela Challis	-
12. Carrot Cake	Rupert Chami	Liz Hayden	-
13. Free From (any recipe)	Barbara O'Connor	Alice Watkinson	Judith Barton
14. 3 Fruit Scones	Joanna Cunliffe	Judith Barton	Emma Overton
15. Loaf of Bread	Sally Goldsmith	Glyn Foley	Philip Robertson
16. Jam	Laura Bond	Andrew Brewster	Karen Bell
17. Lemon Curd	Sharron Goldie	Sarah Ryder	Liz Walkden
18. Marmalade	Joanna Cunliffe	Sarah Ryder	-
19. Chutney	Peter Woodcock	Liz Hayden	Liz Hayden

### FLORAL SECTION: Best in Class: Liz Walkden

	FIRST	SECOND	THIRD
20. Floral Arrangement	Pamela Challis	Liz Walkden	Pamela Challis
21. 3 Cut Home Grown Flowers	Liz Walkden	Niyan Rasool	Niyan Rasool
22. Flowering Pot Plant	Pamela Challis	Pamela Challis	Danny O'Connor

### FRESH PRODUCE: Best in Class: Dominic Driscoll

	FIRST	SECOND	THIRD
23. 4 Eating Apples	Harriet Deeks	Molly Watson-Locke	Laura Bond
24. 4 Cooking Apples	Jean Walker	Niyan Rasool	Richard Caroe
25. 8 Blackberries	Karen Bell	Jonathan Caroe	-
26. 5 or more Mixed Vegetables/Salad	Jennie Street	Jean Walker	Julie Hodgson
27. 3 Courgettes	Joan Gillard	-	-
28. 5 Matching Runner Beans	Andy Knapton	Richard Caroe	Joan Gillard
29. 5 Tomatoes	Dominic Driscoll	Ian Bell	Sally Andrews
30. 5 Tomatoes - Cherry	Trevor Coy	Trevor Coy	Ian Bell
31. 1 Cucumber	Judith Barton	Dominic Driscoll	Sammy Jones
32. Heaviest Marrow	Ian Bell	Jennie Street	Rupert Chami
33. Longest Runner Bean	Ian Bell	Andy Knapton	Jonathan Caroe
34. 3 Eggs from Own Hens	Peter White	Jonathan Caroe	-

### ART: Best in Class: Dave Attrill

	FIRST	SECOND	THIRD
35. An Original Poem	Clive Turner	Michael Rushforth	Clive Turner
36. Oil or Acrylic Painting	Jillian Round	-	-
37. Watercolour	Tina Warwick	Jillian Round	Tina Warwick
38. Sketch in Ink or Pencil	Dave Attrill	Dave Attrill	Jillian Round
39. Upcycled Art or Sculpture	-	-	-
40. Open Art any medium	Jillian Round	Zoe Lawton	Laura Bond
41. Open Sculpture any medium	Mike Weissenborn	-	-

**PHOTOGRAPHY: Best in Class: Sally Andrews**

	<b>FIRST</b>	<b>SECOND</b>	<b>THIRD</b>
42. Black and white	Simon Walkden	Simon Walkden	Keith Hartley
43. Portrait	Sally Andrews	Trevor Coy	Simon Walkden
44. Animal – Domestic or Wild	Keith Hartley	Simon Walkden	Keith Hartley
45. Landscape	Simon Walkden	Simon Walkden	Jane Kirton

**WOODWORK: Best in Class: Stuart Barton**

46. Wood Turning	Stuart Barton	Andrew Rose	Andrew Rose
47. Open Woodwork	Stuart Barton	John Marsden	John Marsden

**CHILDREN'S SECTION: Best in Class: up to 8 – Phainos Shing Hei Ho****CHILDREN'S SECTION: Best in Class: Age 9 – 14 – Harriet Walker**

48. Vegetable Animal (up to 8)	Beatrice Barnes	Elliott Limb	Eliza Brown
49. 3 Decorative Buns (up to 8)	Emily Bond	Jago Murphy	Elliott Limb
50. A Cake any recipe (9 to 14)	Freddie Bond	Hifza Sharaz	Isaac Rai
51. 3 Biscuits (up to 8)	Elsie Mae Roberts	Elliott Limb	Olivia McGrath
52. 3 Biscuits (9 to 14)	Ciara Bell	Harriet Walker	Elizabeth Bridgens
53. Decorated Gingerbread Man	Elliott Limb	Jonathan Caroe	Robyn Dunk
54. Egg Cup Flower arrangement	Elliott Limb	Thomas Weissenborn	Theo Wade
55. Painting or Drawing (up to 5)	Elliott Limb	Hesed Ho	Thomas Weissenborn
56. Painting or Drawing (6 to 8)	Phainos Ho	May Lawton	Alexander Hazar
57. Painting or Drawing (9 to 11)	Harriet Walker	Freddie Bond	Jacob Evans
58. Painting or Drawing (12 to 14)	Xuyan Chen	Xuyan Chen	-
59. Lego Model <25 cm sq (5 to 8)	Maurice Roberts	Thomas Weissenborn	Georgia Brown
60. Lego Model <25 cm sq (9 to 14)	Logan Snell	Jonathan Caroe	Penelope Watts
61. Colour Photo (up to 14)	Jacob Bailey	Zoe Wade	Alice Evans
62 Open Any Medium (up to 8)	Richard Caroe	Felicity Abdullah	Molly Watson Locke
63 Open Any Medium (9 to 11)	Alice Johnson	Freddie Bond	Leila Wood
64 Open Any Medium (12 to 14)	William McGrath	Elizabeth Bridgens	Georgie Walker
65. Handwriting (up to 8)	Matilda Cullen	Emily Bond	Leah Smith
66. Handwriting (9 to 11)	Ava Cheshire	Ada Murphy	Zoe Wade
67. Handwriting (12 to 14)	Elizabeth Bridgens	-	-
68. An Original Poem	Thomas Weissenborn	Sophie Wint	Ciara Bell

We thank the 143 exhibitors who entered 464 entries.

# What's on at Totley Library



Greetings from the Library team with thanks for the ongoing support of Totley Library! We had a very successful folk night and CPR evening (which we are hoping to repeat in the New Year). We have two medical students with us in November/December, who we have asked to do a community survey to see how the library is improving the health and well-being of our community. If you would like to contribute to this survey we shall be posting details on the website. Ideas for more resources to be available are always welcome, but we are limited by the capacity of our volunteers.

We are very pleased to receive donations of top quality books, recent best sellers and jigsaws. Unfortunately, the company that previously collected damaged/unsuitable books is no longer operating. This is causing a significant problem in disposing of stock we are unable to use. We have very limited storage space so please only donate books that are suitable to add to library stock or to sell. Thank you for helping us keep our library stock looking good!

Remember - there are no fines on items that are returned late. Library users are still encouraged to return or renew their library books on time. Lost and damaged items are charged at replacement value.

Julie Kitlowski, Chair, Totley CRIC

## Current Library Opening Hours

Mondays 1pm - 7pm  
Tuesdays and Wednesdays 10am - 5pm  
Fridays and Saturdays 10am - 1pm

## Totley Library Community Art Space: Original Art and Prints for Sale

Are you looking for a special Christmas present? Or maybe something unique to brighten up a wall?



Art works by local artists, Judy Randle (left), Dana Kucewicz, Anne Atkinson, John Wells and Lucy Swinden are currently on display and available for sale at very competitive prices.

Totley Library Community Art Space was established to showcase the work of new and established local artists. All art works

are exhibited for a period of three – six months, free of charge, and are available for sale at a price set by the artists. Totley Library takes a small commission (20%) on each picture sold to support the ongoing running costs of the library.

The library is looking for local artists who would like to join this exciting community initiative and who would like to exhibit in January 2024. For further information, please call in at Totley Library and take a look at the Art Space or email carolynjallcroft@gmail.com.

## Totley Library Cinema

Our cinema programme at Totley Library is available for booking in person or by calling 0114 236 3971. Refreshments will be served at all these films. Raffle tickets: £3 per adult and £1.50 per child. Thursday matinee films are free for over-65s.

For more details of films to be shown, please see posters in

the library or visit our website at [www.totleycric.org.uk](http://www.totleycric.org.uk)

## Library Lottery Winners

In the September draw, first-prize winner was Roger Lloyd-Jones, and Janis Riley won second prize. The first-prize winner in the October draw was Jayne Shirt, and second prize was won by B.R. Belbib.

## New Book Additions

We have plenty of lovely adult titles and children's books from well-known authors! Don't forget - you can make a book recommendation online at our website or email us.



Some of our new books for adults



Some of our new children's books

## Totley History Group presents Painted Fabrics by Hilary Widdowson



**WEDNESDAY 24 January 2024**  
**7.30PM IN TOTLEY LIBRARY**  
**NON-MEMBERS ARE WELCOME**





## Transport 17

Transport 17 would like to say a big thank you to the residents of Totley and surrounding areas, and their friends and families, for the support we have received particularly over the past couple of months.

**Totley Show** We had a lovely afternoon at the Totley Show – thank you to all those who came to see us, and those who had a go (or several) on our lucky dip, and Totley 'find the treasure.' It was great to see supporters of all different ages, to have the opportunity to speak to the local community about the service we provide.



Four of Transport 17's volunteer Passenger Assistants – Danny, Claire, Val and Denise

**A Celebration of Beatles Music** A lively evening was had at Christ Church Community Centre, in Dore, at the end of September thanks to the bands Cellar V and Redback, and special guests Sally Goldsmith and Rony Robinson. The hall was filled to capacity by enthusiastic fans of the music by the



Redback band in action!

Beatles who sang along, danced (a little), and contributed their own tales of Beatles experiences leading to a memorable

evening. A total of £450 was raised for Transport 17 from the ticket sales. Thank you to all those who helped make the event happen, in particular, Phil Harris from the Redback band.

**Financial donations** Thanks to Totley All Saints Church and Totley Open Gardens (further information provided elsewhere in this publication) for their recent generous financial donations to Transport 17. We rely on the support from the local community, alongside grants, for our funding. Donations such as these enable us to continue to provide our transport service to older and more vulnerable members of our community who wouldn't otherwise get out.

### Introducing our Administrative Assistant

Having been without an Administrative Assistant since the start of February this year, we are delighted to have recently recruited Emma Knight to the post. Emma started work with us a couple of months ago and I'm sure will become a familiar



face (and voice on the end of the phone) to you all as she settles into her role here at T17. She is already providing efficient, and much needed, administrative support. Emma writes:

"My name is Emma and I'm the new Administrative Assistant for Transport 17. I worked for Tarmac for 12 years after leaving university initially as an accountant and later as Business Services Manager at various locations. After taking a break when my daughter was young I started work again with my husband when he set up his

own health and safety consultancy business. Needless to say I have lots of experience in administration and accounting. When my husband retired a couple of years ago, after much deliberation, I decided that I wanted to continue working part time and this role is perfect as it allows me to help in the community as well as being able to continue helping to look after my grandchildren. I'm originally from Newbury in Berkshire but have lived on the outskirts of Sheffield for over 20 years before moving to Dore 6 years ago and we are loving being part of the Sheffield Community. I play the clarinet in Silver Spectrum community wind band based in Crookes and myself and my husband are season tickets holders at Sheffield Wednesday. My other interests include baking, crochet, gardening and reading."

**Christmas Fayre** By the time you read this, we will have had our Christmas Fayre, being held on Saturday 25th November. The new management at the Cross Scythes pub have welcomed Transport 17 and expressed their wish to continue supporting us and our fundraising events which is great news. We hope that we will have seen many of you enjoying our established festive favourites such as the Christmas 'Bottle Bonanza' where every ticket wins a prize, as well as some new stalls and activities.

All of us here at Transport 17 would like to express our thanks for your continued support over the course of this year, and wish you all a very Happy Christmas and best wishes for the New Year!



## Got a computer?

### Having Problems?

Is it running slow? Stops responding? Having problems running the latest games or applications? Broadband / WiFi problems?

### Give me a call!

I am available for home visits at any time including evenings and weekends. I can also suggest upgrades to improve performance, or even build you a system to your specific requirements.

Phone: 0114 247 2619  
Mobile: 078 1746 4703

Email: [service@timbrownplus.co.uk](mailto:service@timbrownplus.co.uk)

### Tim Brown

Building,  
Installation,  
Upgrading and  
Troubleshooting  
Computer  
Systems

Over 30 years'  
Professional  
Experience

### Nutrition Coaching & Cooking Classes

Private pasta parties, hen do's, children's birthday packages, guides and scouts, team building events  
&  
Nutrition Coaching



### Viktoria Garbett

07756728479  
[twiddlefood@gmail.com](mailto:twiddlefood@gmail.com)  
[www.twiddlefood.co.uk](http://www.twiddlefood.co.uk)

Member of The Federation of Nutritional Therapy Practitioners.  
Fully insured.

# JOURNEY OF THE MAGI



"This show's got everything ... like, EVERYTHING! Amazing!"

"Brilliant! Like a surprise chocolate with an amazing filling... first it was one thing then another!"

"Talent, innovation, joy, celebration and brilliance ... a fantastic evening."

Audience responses

Sunday 10th December 4pm  
Dore and Totley United Reformed Church

SPRINGS  
DANCE COMPANY

Tickets available from Elaine Ferguson 07929 720977  
Adults £5 Children under 16 Free  
Early booking advised

## Totley History Group

Our December meeting is different!

Enjoy winter songs from across time and place

7pm

Please contact the number or email below for tickets

### Sheffield Folk Chorale

TRADITIONAL and NEW SONGS,  
in GLORIOUS FOUR-PART HARMONY

### SPITWINTER CONCERTS



ALL SAINTS, ECCLESALL

Ringinglow Rd, S11 7PP



Mon/Tue, 18/19 December

Tickets: £8

Contact: 07805 642536

Email: [graham.pratt2013@gmail.com](mailto:graham.pratt2013@gmail.com)

## WE NEED YOU!



Totley Scouts are on the look out for new leaders to join the team.

- Full training provided
- Just a few hours a week
- Support local children
- Fun & exciting activities
- Give back to your local community

Find out more



## Become a Scout Leader

contact [totley1stscouts@gmail.com](mailto:totley1stscouts@gmail.com)

## TOTLEY RISE METHODIST CHURCH

### CHRISTMAS SERVICES

SUN 17 DEC 10.30AM

Morning Worship: Cafe Carols

SUN 17 DEC 4PM

Community Carol Service Coffee and mince pies to follow

SUN 24TH DEC 10.30AM

Worship Service at Dore Methodist

SUN 24 DEC 4PM

Crib Service

MON 25 DEC 10.30AM

Christmas Day Worship





## All Saints Church

The Christmas season can evoke a range of emotions. For some, Christmas is a bright spot filled with lights, music, and cheer - children brimming with anticipation for the big day. But for others, it may feel like another burden during an already difficult time. Whatever

you're facing this Christmas, All Saints church is here for you.

As I write this, our minds are already in the Middle East, and our news is full of destruction, hurt and pain in Israel and Palestine. As we grieve over what we see, we pray for a cessation of violence and the hope of peace. Christmas tells the story of a God who came into the world as a refugee, under an oppressive regime in an unfair world. Exchanging heaven's throne for an unhygienic cattle stall he knows something of our pain. Yet in that humble place was the hope that brought joy to Mary, Joseph, the shepherds, and people ever since.

This hope of Christmas shines all the brighter when life feels dark. Our church has many special events planned this season, which you can find on the flyer below. These gatherings are for everyone, whatever your mindset may be this holiday. We invite you to join us and rediscover the hope born that holy night in Bethlehem.

*Rev'd Ben Tanner, Vicar*

*M: 07912890512*

*E: [ben@allsaintstotley.church](mailto:ben@allsaintstotley.church)*

*[www.allsaintstotley.church](http://www.allsaintstotley.church)*

*Totley Hall Lane, Sheffield | S174FA*

## International Day of Older People

### Celebration Event At Tapton Hall

Recently 120 guests from the South West of the City were invited to Tapton Hall to celebrate the South West People Keeping Well, and International Day of Older People, facilitated and funded by Age UK Sheffield/People Keeping Well, Sheffield City Council and the Partners of the South West PKW network.

Joanna Woodward, Community Development Officer for Age UK Sheffield who leads on PKW in the south west of Sheffield said "This event was a fantastic showcase of what can be achieved when a network of local organisations come together to improve the lives of people living in the community and encourage people to get involved in volunteering. Over the last 6 years the People Keeping Well network in the south west has worked together to help prevent loneliness and social isolation. The Partnership has grown from 12 original partners to over 60, and increased activity provision to accommodate over 100 people per month. New provision provides opportunities to try something new, build relationships and create support networks outside. We hope to host many more events of this type and would like to say a huge thank you to everyone who worked so hard to make this event the success that it was".

Kathy Markwick, Freelance Community Consultant, added "the event was a huge success and we were all delighted that the new Master Cutler, Charles Turner, could join us as a special guest. Guests were treated to a delicious afternoon tea and an awesome performance by musician/vocalist, Oliver Harris. Thirty children from Westbourne School also joined us - their choir was amazing and the soloists'/musicians' performances were both spine-tingling and tear jerking. Intergenerational events are wonderful as everyone has so much to gain".

The new Master Cutler said "Whilst being the Master Cutler is about promoting the manufacturing industry in Sheffield, Hallamshire and South Yorkshire there is also a strong civic element to what we do - after all manufacturing relies on the skills of the workforce from this region. As such it was a delight to join in with the International day of Older People celebration at Tapton Hall, organised by Age UK Sheffield and Sheffield City Council. It was a wonderful opportunity to

say thank you to the generation that has done so much for the City".

Chris Hattam, Headmaster of Westbourne School, added "It was a joy and a privilege to be able to join the event organised by Age UK Sheffield, People Keeping Well and Sheffield City Council. As a school we place great emphasis on the value of community and having the confidence to interact with all we meet. Our pupils loved the event with one stating 'It is the best day of my life!' I have no doubt that our children gained as much from joining the party as everyone else there, probably even more so when they were chatting to the assembled party goers. I would thoroughly encourage every Head to help support events like this as it was a mutually beneficial experience."

Simon Mills, MD of Twelve Trees Care said "Some of our residents and staff attended the celebration event at Tapton Hall. Our residents particularly enjoyed singing along to the very talented Oliver Harris. The afternoon tea was lovely, sparking a debate on whether cream or jam should be applied first. We were also thrilled to see the talented children from Westbourne School perform, which touched the hearts of all who attended."

Kathryn Rawling, Dementia & Wellbeing Manager for Sheffcare said "A huge thank you from the residents of Grange Crescent Care Home for the invitation to the International Day of Older People Celebration held at Tapton Hall. It was a lovely event in a super setting, an opportunity for our residents to get together, socialise and see people from other Care Homes and organisations. I was particularly moved by one of our residents who came to the event. This lady was quiet, unsure what she had come to and a little uncomfortable. She is new to Grange Crescent and long-term care in a Care Home - a big life change for her. Over the course of the day her mood lifted totally, she enjoyed mixing with other resid-



ents from Grange Crescent and the people at the event. She had a delightful time enjoying the music and the wonderful performances by the children. She shared with me that it was a really pleasing day and was full of smiles. I feel that this event will have helped her realise that despite all the recent changes in her life she will still get opportunities to see and mix with people in the community. This is so important for people's wellbeing. The time and effort given to these events by Jo Woodward, Community Development Officer for Age UK Sheffield, Mubarak Hassan, Community Services Officer for Sheffield City Council, and Kathy Markwick, Freelance Community Consultant, is outstanding and should be celebrated. Thank you."

*Kathy Markwick  
Freelance Community Consultant  
0772 9528844*

## Empowering Mums Through Antenatal and Postnatal Physiotherapy

Women's health is a cornerstone of overall wellbeing, and nowhere is this more evident than during the transformative phases of pregnancy. Pregnancy and childbirth bring about numerous physical changes that can result in discomfort or pain. Suvarna Mohture, of Activ physiotherapy in Totley, introduces Activ Physio Women - their new women's health clinic aimed at promoting optimal health and wellness for expectant and new mothers.



Suvarna says "Pregnancy brings remarkable changes to a woman's body, both physically and emotionally. Our antenatal physiotherapy services are designed to accompany expectant mothers on this incredible journey, offering support, education, and personalised care."

Recent studies underline the importance of regular physical activity during pregnancy for maintaining cardiovascular fitness, weight management and improving overall mood and mental health. Activ's expert physiotherapists are well-versed in tailoring exercise programmes that are safe and effective for pregnant women.

"By incorporating low-impact activities, pelvic floor exercises, massage and posture correction techniques, we empower women to alleviate common discomforts such as back pain, pregnancy related pelvic girdle pain, and long-standing aches exacerbated by pregnancy. Our evidence-based approach not only contributes to a smoother pregnancy but also sets the stage for a healthier postnatal recovery."

The postpartum (following childbirth) period presents unique challenges as women navigate the physical and emotional demands of new motherhood. "Evidence from recent studies emphasize the importance of targeted physiotherapy interventions to aid in the postpartum recovery process. Our clinic offers comprehensive postnatal physiotherapy services that address the specific needs of postpartum bodies."

Restoring core strength, addressing diastasis recti (abdominal separation), and re-establishing pelvic floor function are crucial components of postnatal rehabilitation. Activ's physiotherapists employ safe and effective, evidence-based techniques to guide women through tailored exercise programmes that foster gradual muscle recovery, optimise posture and promote overall physical well-being.

Suvarna concludes, "By focusing on a holistic approach that encompasses both physical and emotional aspects, we help mothers regain their confidence and vitality as they embrace their new roles."

If you want more information or want to book in with the team, contact Activ on 0114 2352727 or [mail@activphysiotherapy.co.uk](mailto:mail@activphysiotherapy.co.uk).

## Dore Gilbert & Sullivan Society

It may be that we have had the warmest September on record globally but it hasn't felt like that here in Sheffield. I know it has not been too cold but we did have the heating on a couple of times. Perhaps we are just getting old! To make up for us old 'uns we have yet another addition to our future ranks (we hope) in that Pete and Fiona Geary produced another baby girl in September. We wish them well and hope the weather dries up somewhat.

The date for our Christmas concert at Dore Methodist Church will be at the usual time of 2.30pm on Saturday 16th December. Tickets (£10) will be available by phone on 07565 805405 or via the web at <https://doregass.weebly.com/tickets.html> and as this is usually a very popular event I suggest you don't leave it too long before buying your tickets.

I've sung in two concerts in three days, one of which was at the Whinfall Activity Centre which was sold out. It was an interesting evening with 9 performers all singing solos and whose ages ranged from about 17 to 87! The two youngsters were very good (as was everyone else) and sang songs well suited to the older audience. The second concert was at Bolsover where the G & S Society sang a broadly similar programme to the one we sang in Dore in July. It was an excellent evening but as it fell on the day following that terrible storm, the audience was thinner than it might have been, and the singers had to find a way round the road closures to get there. At one point during the day it was thought that the whole thing might have to be cancelled but as things turned out it was a successful and enjoyable evening, the highlight of which was Mike Tippler's rendition of Private Willis's song from *Iolanthe* where he sang it to a 9 month old boy at the words "... and every boy and every girl who's born into this world alive is either a little liberal or else a little conservative..." It fetched the house down.

As I said last time the Montgomery Theatre is closing to enable refurbishments to happen and as we have not been successful in finding an alternative theatre for our show, we will be putting on concert performances of *Iolanthe* in various venues. So far we have confirmed dates for Crookes Social Club at 2pm on Sunday 7th April, Dore Church Hall, Townhead Road on Saturday 13th April at 2.30pm and at Whitting Moor Church on Saturday 20th April at 2pm.

There are some cracking songs in *Iolanthe* including Private Willis's song *When All Night Long*, bemoaning that MPs have to lose their brain once inside the Houses of Parliament (nothing changes).

I am pleased to say that I can now see clearly out of both eyes having had both eyes corrected for cataracts. The work on the left eye was more uncomfortable than that on the right eye but it seems that this is not uncommon. They do not seem to know why this is the case, but anyway I'm pleased with the outcome.

Don't forget the Christmas concert and watch this space for further news of *Iolanthe* performance news and on how to obtain tickets.

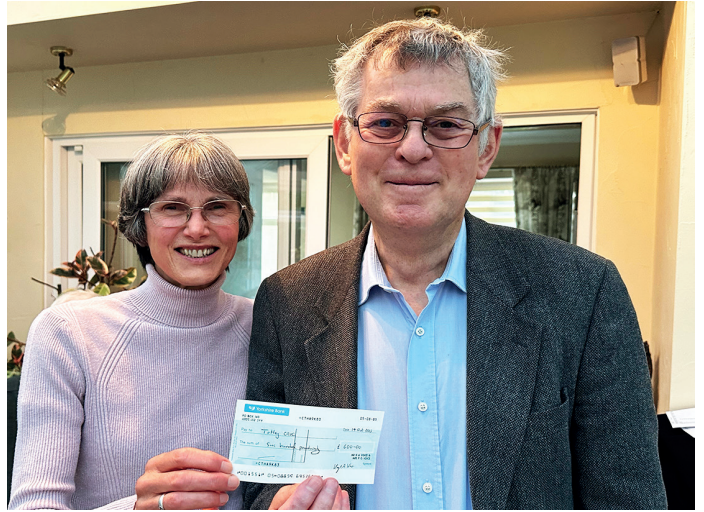
*Derek Habberjam*

## Totley Open Gardens 2023

Following a very successful Totley Open Gardens weekend on 1st and 2nd July 2023, and with the takings from the Totley Yard Sale and Totley Vintage Fair in May, the Totley Open Gardens Association was able to present cheques totalling £6,000 to four local community organisations: £1,500 to Transport 17, £600 to Totley Library, £1,800 to Totley Scouts, and £2,100 to Cherry Tree Support Services. We are proud to support our local organisations, at this time when funding is increasingly hard for them to find.



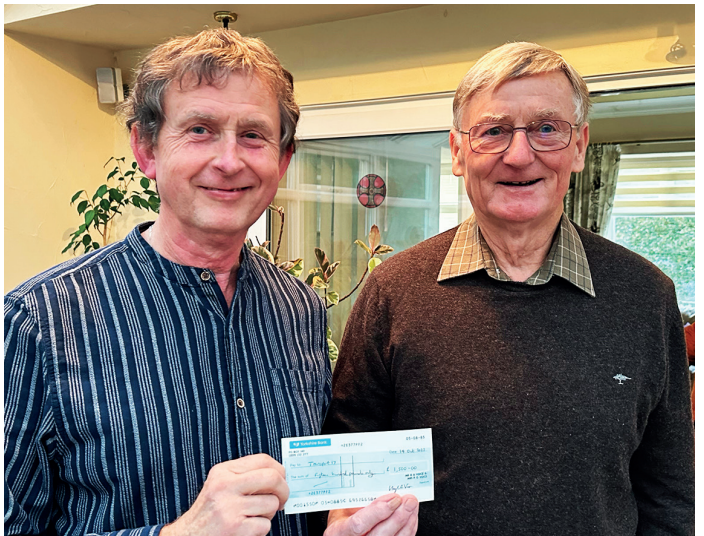
TOG member Ray Sables presents a cheque to Dan Brookman representing Totley Scouts



TOG member Sue Teague presenting to Chris Lansdown from CRIC



TOG member Gillian Woolley presenting a cheque to Richie on behalf of Cherry Tree Support



TOG member Hugh Voice presenting a cheque to Danny O'Connor representing Transport 17

Totley Open Gardens will take place on Saturday 6th and Sunday 7th July from 13.00 to 17.30. If you feel you would like to open your garden, please contact me. We will have at least one new garden already.

Jennie Street  
[jennie@hadish.f9.co.uk](mailto:jennie@hadish.f9.co.uk)  
 Tel. 07527-929-592

Mark and Sally Fletcher invite you to

### The Grouse Inn

### Longshaw

Sheffield S11 7TZ

Meal times: Mondays 12.00 to 2.30pm

Tuesdays to Fridays 12.00 to 2.30 pm  
 and 6.30pm to 9.30pm

Saturdays 12.00 to 3.00pm and 6.30pm to 9.00 pm  
 (drinks – open all day)

Sundays 12.00 to 9.00pm

Phone 01433 630 423

## TrainwithSuzy

**Train with Suzy offers Personal Training Focussed on Fitness, Fat loss and Toning. Based in Dore with own Gym. I offer private sessions individually tailored to your goals.**

**Call to book your free consultation  
 07825-167411 [www.trainwithsuzy.com](http://www.trainwithsuzy.com)**

# IRONING PARLOUR

01142 364073



## Dore Optician

Ian Truelove BSc(Hons) MCOptom      Family Optometrist  
Personal and Professional eye care for all the family

Ian and Tina Truelove have refurbished Dore Optician with the very latest technology

- Hospital-quality 3D OCT imaging allows earlier detection and diagnosis of many eye problems.
  - Free complete spectacles available for children and all eligible under the NHS.
  - Home eye tests available if you are unable to leave the house without help.
  - Digital retinal photography.
  - ReadEZ: Coloured overlays and Enhanced reading assessments for those with reading difficulties or visual stress.
  - Hundreds of frames to choose from for all the family, covering a wide range from £10 to designer.
- Free NHS and private eye examinations – hourly appointment slots, never feel rushed.



Please contact the practice for more information, or pop in for a chat.  
25 Townhead Road, Dore, Sheffield, S17 3GD

Tel: 0114 3273737      Email: [enquiries@dore-optician.co.uk](mailto:enquiries@dore-optician.co.uk)      Web: [dore-optician.co.uk](http://dore-optician.co.uk)



THE COLLEGE OF  
OPTOMETRISTS  
MEMBER 2022

Providing NHS services and registered with the Association of Optometrists, College of Optometrists, General Optical Council



## Dore Garden Club

At Dore Garden Club we are approaching the end of another successful year. Our 2024 programme commences in March. Our 2024 programme will be published in the New Year. In the meantime readers might be interested in a summary of our last two events.

### September – Don Witton: The National Collections of GB

It was good to welcome Don, a National Collection holder of hardy Euphorbias, back to the Club. He was our second ever speaker during the inaugural year of the club, so we go back a long way together.



Don told us about a little-known national charity, Plant Heritage, whose focus is on overseeing and promoting plant conservation and research. They produce an annual Directory of National Plant Collections which details over 600 National Collections and where to visit them - an invaluable guide to have if you're travelling around the UK.

<https://www.plantheritage.org.uk/>

In order to be designated the holder of a National Collection a grower has to have a minimum of 75% of the plants in that species. So that's a lot of work. There are two other national collections around Sheffield, in the Botanical Gardens and at Wentworth. A little further afield, Renishaw Hall has such a collection of yuccas in the conservatory.

National Collections can be trees, shrubs, houseplants or herbaceous perennials. They can be found in parks, National Trust gardens, RHS gardens, nurseries, botanical gardens and gardens. King Charles has a national collection of over 71 different varieties of Fagus trees (beech) and giant-leaved hostas at Highgrove. Don helpfully gave us a list of where to find some of the collections. If you're a lover of camelias head for Barnsley (92 species) or for delphiniums head to Leeds (100 species). As always, Don's talk was superbly illustrated and he brought a selection of euphorbias and other perennial plants for sale on the evening.

### October - Margaret Boulton: A History of Sheffield Allotments

It was good to welcome several allotment holders to the meeting to hear our local speaker, Margaret Boulton, an allotment gardener and author. Her illustrated talk charted the history of allotments in Sheffield. Margaret's fascinating talk brought a new 'growing' perspective to the history of Sheffield and prompted lots of questions.

Allotments have been around for centuries. Enclosure deprived the poor of the right to graze the land, and wealthy landowners gave land to the labouring poor for their potatoes. Much land in Sheffield was owned by the Duke of Norfolk, who lived here for a time. When in the eighteenth and nineteenth centuries land was being bought for rapid industrialisation, the duke converted some land into growing plots to rent to the poor. This measure was desperately needed due to the lack of a welfare state. In reality it would seem that the poor were often excluded from allotments and ownership seemed to be exclusively for the wealthier trades, such as cutlers.

Slides of the earliest map of Sheffield commissioned by the Duke of Norfolk in 1736 showed the location of some of these free-standing plots along Fargate. Other slides, including one of Sharrow Lane, highlighted the trend for allotments to be attached to dwellings when the large suburbs were created. By the end of the nineteenth century legislation was passed giving allotment holders more rights. In 1908 the Small Holdings and Allotments Act came into force, placing a duty on local authorities to provide allotments if six or more people on the electoral role requested one. However, it wasn't until the end of the First World War that legislation made land available to all, primarily as a way of assisting the war effort and to aid returning servicemen (Land Settlement Facilities Act 1919) instead of just the labouring poor.

Today there are some 3200 allotments spread across the city and the Meersbrook allotment site is the largest in Europe. During the 1960s the local authority wanted to dispose of a lot of allotments to make way for housebuilding. In the 1970s the TV programme *The Good Life* sparked renewed interest in growing food and since the 1990s interest in allotments has boomed.

With scientists extolling the virtues of eating more plant-based foods in their natural form, rather than highly processed food, and the cost of living crisis, allotments have never been more popular. Our September speaker even raised his Plant Heritage National Collection on his allotment!

*Pauline Drissell*



## Totley Primary School

### Little Litter Heroes!

At Totley Primary, one of our Golden Rules is that we are 'respectful.' This covers a wide range of behaviours, including looking after the environment both in school and

more widely. Throughout my time as headteacher, I have been thrilled that a number of our children and families have been inspired by our dedicated community litter pickers, Julie and Richard, to go out into Totley to show respect for the local area by removing litter and improve the environment for everyone.

Typically, these efforts have been co-ordinated to take place at weekends and have even been themed to highlight important causes such as breast cancer awareness (through wearing pink outfits) and to showcase the invaluable work of volunteers within our society (by dressing up as Superheroes!)



Julie and Richard have also been into school on a number of occasions to run workshops with the children on raising environmental awareness through displays, games and, of course, meeting the legendary Phil the Bin.



Long may this brilliant community effort continue and do look out for the litter heroes of all ages as they are out and about round Totley to say hello and thank you.

Some of you may even be interested in rolling up your sleeves and getting stuck in to help?

*Ben Paxman, Head Teacher*

## Common Threads

**A series of articles by Richard Wrigglesworth, which are part of a major history project which Richard has undertaken, covering 800 years of local history. In the last issue, Richard introduced us to Richard Furness, and left us with an interesting question. How did a man who had worked and studied diligently for 7 years turn out to be so incapable as a businessman? Richard continues the story.....**

Two things spring to mind. One is something I can relate to, in that he had a butterfly mind, and second, in 1816 he fell hopelessly in love with Frances Ibbotson, the youngest daughter of a Hathersage Tenant farmer Matthew Ibbotson, 'as beauteous a maid as ever a poet woo'ed', as he later described her, who he had met outside the Bulls Head in Eyam in Wakes Week at the end of August 1816. Furness's biographer George Calvert Holland explains that 'when left to depend on his own energies, and became the disposer of his own time, music, poetry and mathematics in turn engrossed his attention.' The leather was often laid aside for books and social converse. The butterfly mind is my observation, as after pursuing her intensely and avoiding her brothers waiting with shotguns, she succumbed to his poetry and blandishments and they eloped in December 1816. He was twenty five and she was twenty four. He was given a long case clock as a wedding present from his old master Joseph Graham, made by Timothy Mason, a clockmaker close to where Richard was apprenticed in Chesterfield. For over two hundred years it will have stood in the farm on Main Street in Hathersage listening to the radical debates and stories, the cottage or school room in Dore Old School with generations of Dore children praying for it to chime at the end of the day, Moss Farm on Limb Lane, the old Ash House, two houses in nearby Woodseats for fifty years, and the last hundred in two houses on Bradway Bank.



The picture of a boy releasing a Butterfly seems an apt metaphor for my great grandparents.

One strange experience for me was sitting inside the porch of the Crooked Spire in Chesterfield looking at a well dressing and seeing an inscription in calligraphy on a grave stone at my feet -

*IN MEMORY OF FRANCES  
THE WIFE OF TIMOTHY MASON  
DIED APRIL 17th 1788 AGED 21*

At the side is a narrow strip of the lower half of the stone

cut away to fill a gap, reading in descending order: Also, die,Also,died, Ag. His clock is still happily ticking away with me as I type this article and hopefully despite this civic desecration they are now happily reunited in Eternity. It was a moment that makes the effort.

Farmer Matthew Ibbotson (1740-1829) was a convivial man, the family first appearing in the Parish Register in 1629. There were three main branches and the main problem for Richard Furness was that he had married into the Roman Catholic branch, which in 1816 was still not a good idea. At the time of the Jacobite Rebellion in 1745 the Young Pretender's army marched south into Derbyshire and all Catholics were suspected of sympathy with the cause, if not of active support.

It is recorded that a 'Popish Priest', Thomas Wilson, came to live in Hathersage and took lodgings with an earlier Matthew Ibbotson at a small farm on Main Street with a family who had been Catholic Recusants for several generations. A Thomas Wilson, Matthew Ibbotson, and a Richard Wright were committed as prisoners to York 'on suspicion'. Wilson and Wright were released, but Matthew Ibbotson became ill and died in prison, and his widow had to travel to Lichfield on 16 October 1746 to obtain letters of administration and collect his belongings. I am not sure of his exact family relationship to the future Frances Furness, but her father had been a small boy at the time and the old penal laws against Catholicism remained in place until late in the 18th century. The problem with researching this is that many Catholic families were living under assumed names but it is possible that my three-times great-grandfather was taken by his mother to Lichfield as a small boy.

A further clue is that the mother of Frances had died around 1814. She had been born Fanny Marsden, and Frances, as the youngest, had been deputed to look after her father. She also had an older sister Mary and another reason for her father's displeasure was that history was repeating itself. On 5 January 1808 she had married a John Wilson, a Miller, by licence in the presence of Thomas Marsden and a John Towle. Again it is not clear whether John Wilson was descended from the 'Popish Priest' Thomas Wilson who was released in 1746 and survived until 1779. Their only child, a son George was born on 24 April 1808 and baptised 11 August 1808. This is why her father objected to Richard Furness as a suitor, strenuously opposed an engagement and forbade his entry to the house, and why one member of it would not infrequently lie in wait with a shotgun. It is not hard to understand why. A man now aged 75 who had spent much of his life as a Tenant farmer and Catholic Recusant, suffered one daughter's indiscretion, had recently lost his wife, and now faced losing his youngest daughter and housekeeper to a man who had even managed to get thrown of the Wesleyan Methodists and who was a poor businessman despite all the advantages of which at that time was a first-class education and training, and even spouted poetry and wrote music. This was the package that awaited Mathew Ibbotson and his dazzled daughter.

On hearing of their deception on the grapevine he summoned them to the farm and one can only imagine the trepidation with which they walked through Hathersage. Were there net curtains in those days to twitch? On their arrival, Matthew did something that is a great testament to the toleration and character of the man, and turned a potential tragedy into a heart warming romantic story. He acknowledged defeat and the result was that Frances continued as housekeeper, the couple moved in with him, and Richard continued his business as a Currier in Eyam, returning to Hathersage at night. The arrangement appears to have worked well. He now had a focus back in his life later stating that his years in Hathersage were among the happiest of his life, and Matthew was said to have become genuinely fond of his son in law.

One interest that must have added to his later value in Dore was a friendship with a Mr Cheetham, a surgeon living in the nearby village of Hope, who was pleased to give free instruction in medical knowledge and have an intelligent friend to assist in operations, fractures and extraction of teeth, in a rural area where hospitals and doctors were few and far between. This was an area that fascinated and



enthralled him, and again more gentlemanly than a humble bookkeeper or Currier. However, returning to Eyam was fraught with distractions. His mother gave birth to her final and ninth child in 1817, and in the same year their first son was born on 13 October. His father was to die in 1819 leaving Richard notionally head of the family, although with two brothers and a sister in their twenties and three more teenage boys, who all fortunately sound more than capable of looking after their mother and her two youngest. He never took advantage of his primogeniture, closed his Currier business in 1818, and in the period before moving to Dore helped on the farm, continued with his medical interest, wrote poetry and fathered two more sons.

My three-times grandfather Matthew Ibbotson has become a figure of fascination for me. He was long remembered as an independent thinker, a man of perception and far sighted ideas, who predicted that one day men would see carriages drawn without horses, an idea that exposed him to much good natured ridicule. If only he could have lived to see what his grandson George Wilson would achieve! He kept open house on Main Street, acting as host several times a week to whoever cared to call. At the time it was on the east-west trade route for the packers and drovers crossing the moors before pausing at the end of the valley to rest before climbing Stanage Edge, and bringing news to what was then an isolated area. The Ibbotsons were even reputed to brew their own beer.

These meetings included the Vicar, the Catholic Priest and the village Surgeon, and they held vigorous disputes on politics, religion, and literary subjects. One of the attentive listeners was the young George Wilson who in 1816 would have been about eight. His family later moved to Manchester in 1819, the year of the Peterloo Massacre. What effect the debates had on young George, who was an only child, or what additional tuition and stimulation he received from his uncle in subjects such as mathematics, French, or poetry can only be conjecture, but what we do know is that this way of life was catching up with Richard Furness and it was time to find a proper career and provide for growing family.

In June 1821 this advert appeared in the Sheffield Iris:

**WANTED A SCHOOLMASTER FOR THE SCHOOL  
OF DORE IN DERBYSHIRE**

it is required that he be a Married Man, qualified to teach Reading, Writing, Arithmetic, and English Grammar, a Member of the Established Church, and not exceeding forty-five years of age. It is also requisite that his wife be capable to teach Reading and Needlework. A Dwelling House will be provided, and there will be an Endowment to the School of at least Twenty Pounds Per Annum. Applications may be made for further information to Mr JOHN HANCOCK, Dore, if by letter post paid.

The Trustees of the Dore School met in the Devonshire Arms in June 1821, then on the Hathersage Road, the guidance to them from the Society for the Propagation of Christian Knowledge being: that he be a member of the Church of England, of a sober life and conversation and not under the age of twenty three; that he will understand well the grounds and principles of the Christian religion and be able to give a good account thereof to the minister of the parish on examination; that he have a good government of himself and his passions and keep good order; that he had a genius for teaching, write a good hand, understand arithmetic, and that he be approved by a minister of the Parish.

The radical nonconformist with a love of porter and a Roman Catholic wife, carrying her third son as a babe in arms, and with no previous experience in teaching, got the job in Dore and started in October 1821 at a salary of £18 per annum plus a new rent free school house (now known as Dore Old School), where he was to spend the next twenty five years. I have a picture in my head of them on a horse and cart with the kids sat on my grandfather clock.

Meanwhile back in Dore, Richard Furness had put his restless unsettled years behind him and had thrown himself into

every aspect of village life. The new Church for which he had drawn the plans had been completed in 1828 and been consecrated by the Diocesan Bishop of Lichfield and Coventry on 22nd August 1829, and he was now fulfilling so many different roles in the village - tasks that suited his multi-faceted character to perfection - that he once doodled a verse reciting these on a sketch of a survey he was making.

I Richard Furness, school master, Dore,  
Keep parish books and pay the poor;  
Draw plans for buildings and indite  
Letters for those who cannot write;  
Make wills and recommend a proctor,  
Cure wounds, let blood with any doctor;  
Draw teeth, sing psalms, the hautboy play  
At chapel on each holy day;  
Paint sign boards, cut names at command,  
Survey and plot estates of land,  
Collect at Easter one in ten -  
And on Sunday, say Amen.

He also wrote poetry in the style of the Sheffield area, mixing violent radicalism with intense regional pride. Northern virtues were extolled whilst faults in others were satirized. Local pride was expressed in topographical and descriptive poetry while society's vices were portrayed in satirical verse. His own local hero (and mine!) was Ebenezer Elliott, the Corn Law Rhymer, who will feature later.

My next article contrasts how, after this positive beginning, Richard's life fell apart, but then recovered in his later years, with the mercurial rise of George Wilson.

## Totley Scouts

### Win Christmas presents with Totley Scouts!

Get into the festive spirit and support your local Scout group by buying tickets for our exciting Christmas raffle! 215th Sheffield (1st Totley) Scouts are on a mission to raise £3000 to purchase new camping equipment and a trailer, to ensure that our 180+ young members have the best possible outdoor adventures in years to come. You can make a difference and be part of our community effort.

Our Christmas raffle has some amazing prizes, including a Nintendo Wii, tickets to *Strictly - the Professionals*, and vouchers for local businesses, making it a perfect opportunity to win gifts for your loved ones this Christmas. It's win-win! You have a chance to win fantastic prizes while also contributing to a great cause!



Totley Scout Group has been a vital part of our community for generations, teaching young people valuable life skills, leadership and teamwork. By supporting our fundraising efforts, you are investing in the future of these young people and helping to create responsible, capable and confident individuals. We are very grateful to all the local businesses who have donated prizes to support us.

Tickets are available from all our members, so please look out for them and be sure to buy yours when you can. Every ticket purchased brings us one step closer to our £3000 goal, and ensures that our local scouts can continue to thrive in the great outdoors. Let's make this Christmas special by spreading the joy and generosity within our community. Buy your tickets today, and together we can reach our goal and create lasting memories for our local young people. If you'd like some books of tickets to sell at work or in your own community group, please contact our treasurer Dan on 07966 796581.

*Totley Scout Group Committee*



OUTRAM FIELDS  
CINNAMON LUXURY CARE

OPENING

EARLY  
2024



# SHOW SUITE NOW OPEN

We are pleased to announce that our show suite is now open. Outram Fields is a brand-new luxury care home that brings first-class care and superior amenities to the community of Bradway. Outram Fields is part of the Cinnamon Care Collection Group, which is proud to be recognised as one of the Top 20 Large Care Home Groups in the UK for the 6th year running by independent reviewer carehome.co.uk.

**For more information or to visit our Show Suite  
call our friendly team today: 01144 934 334**



**At Outram Fields, people will always come first**

RESIDENTIAL CARE | DEMENTIA CARE | RESPITE CARE

**Luxury Care Home in Sheffield**

Outram Fields Care Home, 250 Twentywell Lane, Bradway, Sheffield S17 4QF

[www.cinnamoncc.com/outramfields](http://www.cinnamoncc.com/outramfields)





OUTRAM FIELDS  
CINNAMON LUXURY CARE

# Community CALENDAR

JOIN US AT OUTRAM FIELDS - *All welcome*

## Dementia TALK

Join us at Outram Fields for a Dementia Talk on Friday 1<sup>st</sup> December from 2pm-3.30pm

We are delighted to have Grace Stead from Enrichment for the Elderly as our speaker for the talk. Grace has over a decade of experience supporting people with dementia and helping people better understand the condition.

- ❖ Want to know more about Dementia?
- ❖ What to know how to support a person with dementia better?
- ❖ Come and explore dementia with Grace
- ❖ Question and answer session will follow after the talk



## Christmas COFFEE MORNING

8th Dec - 10am - 12.30pm

Join us for mince pies, Christmas cake and festive drinks



## DIZZINESS & FALLS Talk

Join us on Thursday 14th December for a Dizziness and Falls Talk with Hallamshire Physiotherapy - 1.45pm - 3pm

We are delighted to have Director of Hallamshire Physio and Chartered Physiotherapist Peter Thomason MSc, BSc as our speaker for this session, who is a specialist in musculoskeletal therapy as well as vestibular rehabilitation. Peter will be covering the following topics:

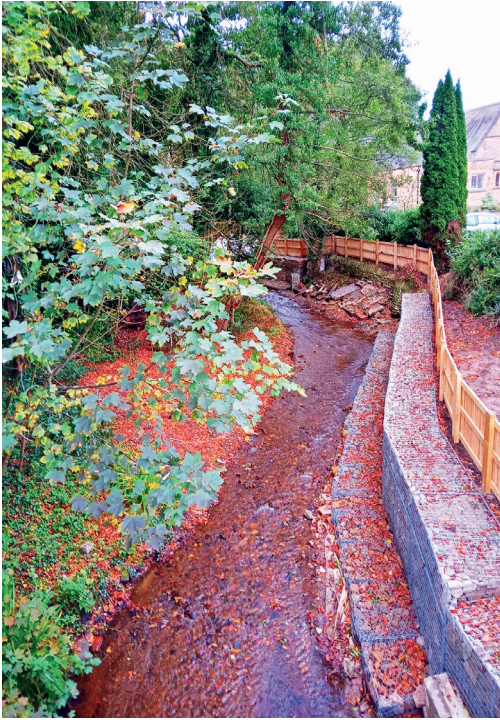
- ❖ Explaining the balance systems
- ❖ "Why am I dizzy?" - Common causes of vertigo and dizziness
- ❖ Benign Paroxysmal Positional Vertigo (BPPV)
- ❖ Falls and how to prevent them ❖ Q&A



As places are limited, booking is essential so please call Claire on 01144 934 334 or email: [outram.haa@cinnamoncc.com](mailto:outram.haa@cinnamoncc.com)

## Riverbank works at Totley Rise Methodist Church

If you walked across the road bridge on Baslow Road over Old Hay Brook near Totley Rise Methodist Church in late summer, you may have noticed some works in the river. This work was necessary following the development of a mini-sink hole in the car park of the Methodist Church. The hole was a



*View of Old Hay Brook from Baslow Road bridge*

result of erosion of the riverbank by the river running alongside the boundary of the Church. It was obvious that something had to be done to protect the riverbank from further erosion threatening the future of the Church car park, which served both the Church and the community centre adjacent to it, and provided access to the Quiet Garden which is open to the public on a daily basis, with its peaceful woodland, lawn and river. Furthermore, the car park is used in the early evening as an outdoor play area for the After-School Club operating from the community centre during which time there is restricted access for cars.

Quotes from suitable contractors indicated the cost of the necessary construction to protect the riverbank was of the order of £45,000, a sum probably well beyond the means of church members. Following considerable prayer, it was decided to have an appeal to church members in March to see how much could be raised. This resulted in a gift day totalling £32,000, a sum well beyond the expectations of the Church Council, but still short of the required amount. Successful appeals to the National Lottery, Benefact Trust, Sheffield Town Trust, J.G.Graves Charitable Trust, and Sheffield Methodist Circuit and District made up the deficit. Unknown to the Church Council the privately-run after-school club, Play in Dore, organised a home-made cake sale raising £167.26, which was the 'icing on the cake' for the Church Council and reminded us all of Jesus' story of the Widow's Mite.

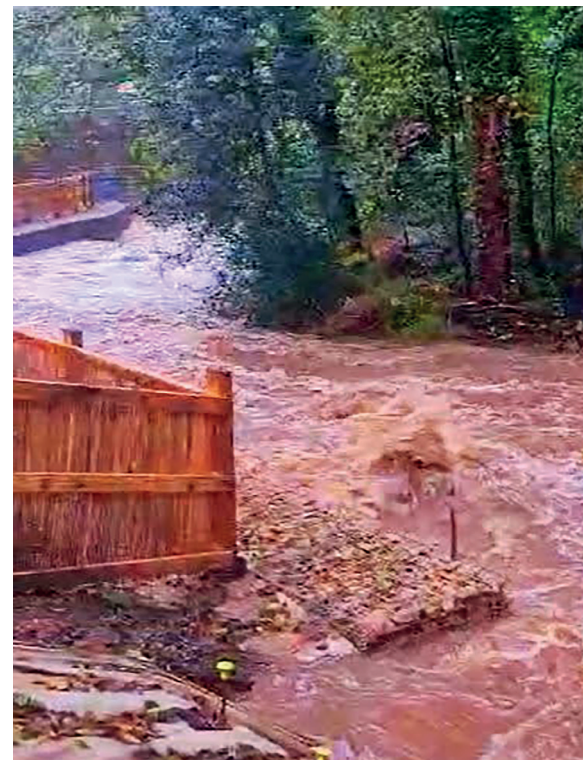
Our problems were not yet over. Before the work could start, we had to get the permissions of the national Environment Agency and Sheffield City Council. Both agencies required a great deal of paperwork and long and detailed assessments. The Environment Agency finally gave agreement at end of April, with a number of technical constraints and a stipulation that the work must be completed by end of September in order to protect salmonids in the river. Sheffield City Council gave their permission at end of July after requiring a Crayfish Survey and a Flood Risk Assessment. This left a short window to appoint contractors and get the work completed before October 1st 2023.

The good news is that the work was been completed on time thanks to the professionalism of the Contractor, Grant Stewart, and the diligence of our volunteer Manager, Mr Ipsa Biana CEng, MICE. And it was work completed within budget. Eat your heart out HS2!



*The calm before the storm!*

Post Script – Just in time! Only a month after completion of the project, along came Storm Babet, demonstrating just why it was so important to strengthen the riverbank. Hearts



*Storm Babet - the reinforcement is tested!*

were in mouths as the water levels rose to the top of the gabion blocks, but they held, and the bank and the car park remained in safely in place – which they would probably not have done if the rain had come last spring. Thank the Lord!

*Stuart Barlow*

Activity	Venue	Primary Contact (Group leader)
Coffee and exercise classes (Strength/Circuits/Seated) Variety of gentle exercise sessions combined with refreshments	Bradway Community Hall -Monday (weekly) Dore and Totley United Reformed Church -Monday (weekly), Totley Library/CRIC- Thursday (weekly) St Peter/St Oswald's Abbeydale Road- Friday (weekly)	Community Wellness Service - 01145537807
Sporting Chatter / Sporting Chatter films: A social group who meet to discuss all things sport	Dore and Totley United Reformed Church -Friday (weekly)	Phillip Staton – 07788 620313
Singing Teapot Choir - A singing group for all abilities	Dore and Totley United Reformed Church-Tuesday (weekly)	Yo Tozer Loft -07925 634420
Welcoming warm space - meet others and have fun. refreshments provided	Dore Methodist Church Hall- Monday (weekly) 10.30am to 1pm.	No booking requirement just drop in
Dore and Totley Rosemary memory café (Dementia targeted) - a welcoming social space for people living with Dementia.	Dore Methodist Church Hall – Tuesdays - 1 <sup>st</sup> and 3 <sup>rd</sup> week of every month	Contact : <a href="mailto:Elsie.ledger@ageuksheffield.org.uk">Elsie.ledger@ageuksheffield.org.uk</a> Tel. 07384 833594
Reminisce and Revive: a Zoom group where we share stories and poems we have written as well as favourite pieces of writing, including favourite films and TV programmes.	Zoom -Monday (fortnightly)	Anne: <a href="mailto:anne.grange77@googlemail.com">anne.grange77@googlemail.com</a> 07815 966784
Forest Bathing - a chance to slow down and enjoy mindfulness in nature	Graves Park/ Abbeydale Industrial Hamlet in winter months) - Saturday (weekly)	Caroline Cook- 07583551705
Herbal Wellness: Learn about a different herbal medicine every week	Abbeydale Industrial Hamlet - Friday (fortnightly)	Caroline Cook- 07583551705
Woodwork Wellbeing: a seasonal woodworking course	Bradway Community Hall - Tuesday (weekly)	Steven Fridlington – <a href="mailto:woodworkwellbeing@ouytlook.com">woodworkwellbeing@ouytlook.com</a> 07900 344361
Ecclesall Forum: a space to socialise and make new friends. This group is part of the wider Ecclesall forum	Cherry Tree Pub, Carterknowle - Monday (weekly)	Paul May – paulmay@blueyonder.co.uk
Dance to Health Sheffield: gentle dance classes for all abilities	St Augustine's church, Endcliffe- Multiple days of the week	<a href="mailto:NesreenShah@ae-sop.org">NesreenShah@ae-sop.org</a> 01993 870159
Table Tennis	Bradway Community Hall- Thursday and Friday (weekly)	Jan – 07787 954842/0114 418 6463
S11 Carers Walk: keep fit and healthy and make new friends on these gentle walks, designed to give carers respite	Thursday - (First week of every month)	Sheffield Carers Centre -0114 278 8942
Natter Coffee Morning: a welcoming space to meet new people and enjoy cakes and coffee	Totley Library/CRIC- Thursday (weekly)	Totley All Saints Church -0114 236 7627
Coffee on the corner social drop in: enjoy great food and drink and meet new people)	Coffee on the corner – Baslow Road –Friday (weekly)	Coffee on the corner- 07941 780772
South West Friendship Lunches: Book onto one of our local friendship lunches and enjoy great food and entertainment	Crosspool Tavern Pub, Crosspool - Monday (2 <sup>nd</sup> monthly) The Ball Inn, Crookes -Tuesday (1 <sup>st</sup> monthly) The Greystones Pub -Tuesday (2 <sup>nd</sup> monthly) Shepley Spitfire pub -Friday (last monthly)	0114 266 2113 0114 266 1211 0114 266 5599 0114 236 0298
Fulwood coffee and games morning: dementia friendly	Fulwood Scout Hut, Fulwood Road-Tuesday (2 <sup>nd</sup> and 4 <sup>th</sup> Tuesday of the month)	<a href="mailto:Elsie.ledger@ageuksheffield.org.uk">Elsie.ledger@ageuksheffield.org.uk</a> - 07384 833594
S17 Carers Café: a social space for carers to come together and make new friends designed to give carers respite in a warm and welcoming environment	Meet at Totley URC on Totley Brook Road - 10.30am on 1st Wednesday of each month Meet at Border View Farm on Rod Moor Road - 11.00am on 3rd Wednesday of each month	Sheffield Carers Centre – 0114 278 8942
Calmly Create: the main objective of the sessions is for patients who may be experiencing stress, anxiety, loneliness to create something in a warm environment	Fulwood Old Chapel School Room, 8 Whiteley Lane, Sheffield, S10 4GL-Wednesday (weekly)	South Yorkshire Chaplaincy and Listening Service 07903 899751 <a href="mailto:sycls@sycls.co.uk">sycls@sycls.co.uk</a>
Bents Green Rosemary Memory Café (Dementia targeted): a welcoming social space for people living with Dementia.	Bents Green Methodist Church, Ringinglow Road, S11 7PU-Thursday (1 <sup>st</sup> and 3 <sup>rd</sup> monthly)	<a href="mailto:Elsie.ledger@ageuksheffield.org.uk">Elsie.ledger@ageuksheffield.org.uk</a> - 07384833594

## Councillors' Update

It remains a very busy time at the City Council with major discussions on a range of issues, but we want to start with some good news for the local area. As part of a planning agreement for a development in Loxley that was approved some time ago, Sport England required that improvements were made to cricket facilities elsewhere in the city. After lengthy discussions we can report that a payment has been received to introduce a non-turf (all weather) pitch in the Tootley Bents Recreation Ground. The current expectation is that it will be installed early next year, together with some pre-season renovation works to other areas.

Ward Councillors were also successful in obtaining funding to support this year's Remembrance service on Baslow Road. Numbers attending the event have been growing over recent years which lead to safety concerns and complaints from motorists. Martin worked with the church and the Council Highways department to develop a bid to the South West community fund. This was approved by local Councillors and an official road closure with well-marked diversion routes allowed the event to go ahead in safety. Thanks must also go out to the contractors who manned the road closure points.

On a less positive note we continue to receive large numbers of complaints about local bus services. These are organised by the South Yorkshire Mayoral Combined Authority (SYMCA) at a regional level and funded by central government. Local Councillors have raised several concerns on the poor reliability of the 97 & 98 services, and particularly the M17 which is operated by TM Travel. At the end of October, TM Travel reduced their evening and Sunday services across the city, in part due to a shortage of drivers, but despite a further cash injection the problems got worse and another reduction in service was made. We understand that SYMCA now intend to fine TM Travel for their failure to deliver contracted services. We are calling on any fines received to be

reinvested in the areas that have been affected and get local routes back to an acceptable standard.

We are also dealing with a number of complaints over the installation of new internet cables by Connect Fibre. In some areas they have been using telegraph poles instead of laying them underground. Whilst they have the right to do this they have not always followed the correct procedures. We have tackled them on this and have also asked the local planning department to take action when appropriate.

Recent storms brought several problems in our area including flooding to the cellars on Tootley Brook Road, leading to a temporary loss of gas and electricity supply. The Fire Brigade attended with multiple pumps and council officers attended to support any vulnerable people. Although any disruption is a cause for concern, it was notable that some areas of the ward were spared due to pre-emptive leaf and gully clearance by Amey in response to concerns raised by residents.

And finally ..... This year's 'Ward Pot' remains open for grant funding applications from voluntary and self-help groups in the local area. Details can be found on the Council website. The Local Area Committee also has funding available for the following specific areas; Biodiversity (seeds for community led wild flowering), Environmental Groups, Events and Festivals, Cost of Living, Isolation and Loneliness, and unpaid carers lunch. More details about these funding opportunities can be obtained from the Local area Committee Office at southwestLAC@sheffield.gov.uk

As ever, do let us know if we can help with anything related to the City Council.

*Martin, Colin & Joe*

*martin.smith@councillor.sheffield.gov.uk  
colin.ross@counillor.sheffield.gov.uk  
joe.otten@councillor.sheffield.gov.uk*

## VIOLIN AND VIOLA LESSONS

*from beginners to diploma level*

- Qualified, experienced (30+ years), fun and patient teacher
- DDC checked (April 2023)
- All ages (6 years and over)
- Late starters and restarters welcome



07787 417 527

SUNDARI HELLER  
LRAM, MISM



## GWS



Technology Solutions

PC Problems, Repairs, Servicing, Setup No Job Too Small  
Wireless & Internet Setup Apple Macs Data Transfer  
New PC's, Laptops, Upgrades Tuition Safe PC Disposal  
Tablets, iPads, iPhone, Setup & Tuition Smart TV, Media box  
Wireless/Airprint printers Wireless/ Internet boosters

**\*\* For All Your PC & Technology Needs \*\***

Guy Senior

Phone: 0114 2352662 Mobile: 07890030453

Email: [guy@gwstech.co.uk](mailto:guy@gwstech.co.uk)

Web: [www.gwstech.co.uk](http://www.gwstech.co.uk)

GWS. 5 Conalan Avenue, Bradway, Sheffield S17 4PG

## Brambles Landscapes

Fencing, Gates & Garden Bars Installed To Last

NEW for 2022: Licensed driveway moss & weed control



Established 12 Years All Installations Guaranteed 10 Years

Karl Nuttall-Allsop 23 South Street North S43 2AA

Text or Call for a quote **07720 845 326**

[veryhelpfulman@yahoo.com](mailto:veryhelpfulman@yahoo.com)

## Christmas Tree sales at Longshaw

Longshaw is known for its ancient woods and tumbling streams, but this haven on Sheffield's doorstep will now add Christmas trees to its mix of natural beauty. From 25 November to 23 December the National Trust site will be home to a small woodland of Christmas trees for sale.

Longshaw Christmas trees have been decorating people's homes for the festive season for almost 50 years. Rangers and volunteers expertly grow a selection of trees on site throughout the year, from the traditional Norway spruce to the Fraser fir, which is famous for producing the rich aromas of a traditional Christmas. Other trees on offer are from carefully chosen British growers and have been selected for their exceptional quality.



*A family enjoying Christmas trees at Longshaw*

Peak District National Trust Ranger Mark Bull, has been helping people choose the right tree to take home from Longshaw for over 15 years. "We are out working in nature year-round in some of the most spectacular landscapes the UK has to offer, so we really know and respect our trees" he said proudly.

"We like to say a tree bought is a tree planted, as money raised through selling Christmas trees supports the conservation we do. Over the last year we've been restoring wood pasture at Longshaw, enabling the us to plant more native trees such as rowan, oak, holly and hawthorn to provide a better habitat for wildlife and protecting the woodland against climate change. We'll also be planting individual trees across the estate that will grow as features in the landscape for many years to come.



*Mark Bull (right) with Mark Attwood (left) in the Christmas tree nursery at Longshaw*

"Our Christmas trees are important to us and the care that goes into them really shows. We love to make sure we match the right tree to the right person and offer expert advice on caring for your tree and what to do with it once the holiday season is over."

With Christmas tree sales having run for nearly 50 years, buying a tree from Longshaw has become an anticipated tradition for many families.

Mark told us: "Christmas tree sales at Longshaw have been running for so many years that children who used to come along to our Christmas tree sales with their grandparents are now bringing their own children, which is amazing to see."

Christmas tree sales at Longshaw run from Saturday 25 November until Saturday 23 December, from 9.30am to 4pm just off the main Woodcroft car park.

### Christmas at Longshaw

The National Trust site will also be a great place for you to come together and make Christmas memories throughout December with plenty to get you in the Christmas mood. Get creative and create a beautiful festive wreath with locally sourced, high-quality materials at one of Longshaw's popular Wreath-Making Sessions on the weekend of 2nd and 3rd December and the weekend of 9th, 10th December as well as 11th December. For children, get in the festive spirit and make simple and beautiful nature inspired creative decorations and crafts. These sessions take place on Sunday 17 December and are ideally suited for children aged 3-11 years old.

Longshaw is also the perfect place for a crisp winter walk, with the trees bare of leaves and amazing far-reaching views. Meet up with family or friends, or take some time to yourself, for a rejuvenating walk in the crisp air of the Peaks.

## Regular events and meetings at Totley Library

### Monday:

**French lessons for children** following the award winning course material from La Jolie Ronde. After-school classes are available for children in the children's library  
3.40pm - Y5/Y6; 4.10pm - Y3/Y4; 4.40pm - Y1/Y2  
5.30pm - Y4/Y5

Contact Joanna on 07854 148809 or email [speaquesheffield@gmail.com](mailto:speaquesheffield@gmail.com) to find out more about local availability for French language classes.

**Friends of Gillfield Wood**, occasional Mondays, 7.30pm onwards. Talks on local nature and conservation. See posters, the FoGW article in this issue, or [www.friendsofgillfieldwood.com](http://www.friendsofgillfieldwood.com)

**Councillors' Surgery**, 2nd Monday of the month, 6-7pm

### Tuesday:

**Baby Time** 1.30-2.15pm (term times only). Come along to meet other parents/carers and babies. We sing simple songs, have fun and allow time to chat.

**Poetry Group**, first Tuesday in month, 7.00 - 9.00pm. *Please note that this group cannot accept new members at present.*

**Friends of Dore and Totley Station** Occasional Tuesdays, 7.30pm. See [www.FODATS.net](http://www.FODATS.net)

### Wednesday:

**Coffee Morning**, 10.30 - 12noon

**Story Time** for toddlers and pre-school children from 10am - 11.30am (except school holidays). Children can take part in weekly themed craft activities, sing songs and listen to a story. £1 donation per child greatly appreciated.

**Health Walks**, 10.30am, meet at Library. Contact Step Out Sheffield on 07505 639524 or email [stepoutsheffield@gmail.com](mailto:stepoutsheffield@gmail.com)

**Totley History Group**, usually last Wednesday of the month, 7.30. Talks on matters of historical interest. Check posters, the *Totley Independent* Diary, or [www.totleyhistorygroup.org.uk](http://www.totleyhistorygroup.org.uk)

**Yoga sessions** 7.00 - 8.30pm, Wednesdays (except the last Wednesday of the month). For more details call Ann Zielonka on 0114 2361585 or 07929 736966. Beginners welcome. You are advised to call Ann to check that the sessions are taking place.

### Thursday:

**Thursday Morning Natter** 10.30 - 11.30. Hot drinks and good company - for people aged 60 or over.

**Chair Aerobics with Kay** 12noon for 45-60 minutes. An Age UK and People Keeping Well weekly exercise class. £3 per week - no need to pre-book, just turn up.

### Saturday:

**Regular second-hand book sales.** Check CRIC website <http://www.totleycric.org.uk/>

# Totley Deli

*Where quality and friendliness count*

Look out for our daily specials or join us for breakfast.

Why not come in and sample our wide range of hot & cold sandwiches and home made produce. Freshly made daily to eat in or take away. All produced from locally sourced suppliers.

- Fresh Roses bread delivered daily & available to order
- Selection of cooked meats sliced to your specification
- Superb selection of fine cheeses, preserves & pickles
- Moss Valley bacon & sausage
- Longley Farm dairy products
- Wateralls pork pies
- Freshly baked pastries

All available to take away.

Homemade scones, lasagne & quiches



If you are having a party or family gathering why not let us take the strain and provide a buffet for you.



51-53 Baslow Road, Totley Rise. S17 4DL.  
Call 0114 2364238

Est 1971

## R.S. HEATING & BUILDING CO.

### Heating division

Experienced installers of all types of domestic boilers. Authorised installers of Vaillant, Worcester Bosch and Glow Worm boilers.  
Full after sales service dept.

### Plumbing division

Bathrooms, showers, wet rooms, individually designed washing rooms for the disadvantage a speciality.  
A complete service, from design to even laying a new floor surface

### Building division

Kitchens, complete House renovations including general building, joinery, plastering, tiling, electrical, decorating etc.

88 Sunnyvale Road, Sheffield S17 4FB  
Tel: 0114 2364421  
enquires@rshb.co.uk  
www.rshb.co.uk



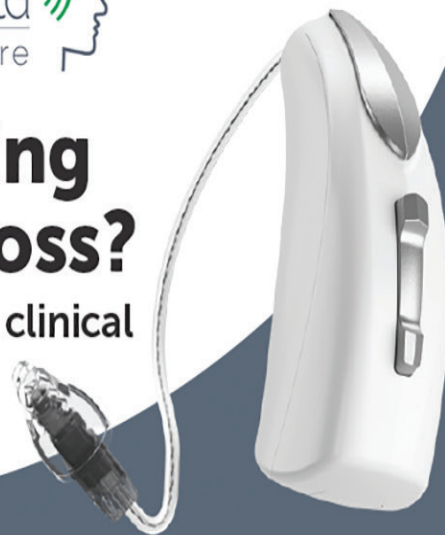
## HEARING THERAPY Ltd

Hearing & Tinnitus Care



# Are you suffering from hearing loss?

Get in touch with your local clinical audiologist expert today!



Our Services  
Hearing Tests  
Tinnitus Treatment  
Hearing Aids  
Ear Cleaning

**Bupa & CQC**  
Registered

To book an appointment at our Dore clinic, or for further details:

**0114 349 3326**  
hearingtherapy.co.uk  
info@hearingtherapy.co.uk





## Totley Rise Methodist Church

Grove Road, Sheffield, S17 4DJ

Totley Rise Methodist Church aims to be a church in the community and for the community, increasing an awareness of God's presence, celebrating God's love, caring for people, helping people to grow and encouraging people to follow Christ.

### Christmas is coming

There is a point in the Christmas story, as the Shepherds are watching over their flocks by night, that a host of angels appear and sing of peace on earth. As Christmas approaches this year, there is a great need for peace in many regions of the earth, and we pray that hearts will be moved to bring peace, love and reconciliation to all.

Our morning worship at 10.30 on Sunday 17th December will be a café-style carol service with some newer songs, while in the afternoon we will have a more traditional service of lessons and carols for the whole community. On the morning of Christmas Eve, we will be worshipping up at Dore Methodist Church, and in return, their members will join us back in Totley at 10.30 on Christmas Morning. We hope you can join us.

### Regular Services Information

9am for 9.30am most Sundays – **Toddler Praise**. A 30-minute service for pre-school children and their parents/carers, preceded by refreshments from 9am.

10.30am **Mid-morning Service** every Sunday. An informal and contemporary service usually lasting approximately 1 hour 15 minutes, with a monthly Communion. Children usually leave the service for Junior Church after the first 15 minutes or so, except on the 4th Sunday of the month when the service is even more informal for **All Age Worship**.

At 3pm on the second Sunday of each month **Focus Church** takes place. This is a time of worship specially structured for those who have learning disabilities and cognitive difficulties.

We also support **Outdoor Church**, a movement where families with children can meet (usually on the 1st and 3rd Sundays of each month) to learn more about God's world and the Christian faith through an informal nature-focused time of fun and worship. See [facebook.com/groups/outdoorchurch](https://facebook.com/groups/outdoorchurch)

### Tuesdays at TRMC

Tuesday is a busy day for us, beginning with a **Prayer Meeting** from 9.30-10am in the church. We focus on prayers for the community, for the world and any situations needing healing and the touch of God's hand.

From 10am until noon our free **Welcoming Places Coffee Morning** in the church lounge provides an opportunity for anybody to call in for free refreshments and a chat with others from the community. This began as part of the need for warm spaces for people to use when energy costs began to soar, and is now a permanent activity. In one part of the lounge there are toys and books for young children with parents or carers.

**Knit, Natter, Craft and Chatter** immediately follows the coffee morning, running to 3pm. This is a busy and friendly group, offering tea, coffee, biscuits and most importantly, friendship for up to three hours. Young and old, men and women are all welcome. Feel free to bring a packed lunch.

### Thursday Pushchair Club

Babies and toddlers aged from 0 to 5 years are welcome to join us, with their carers, on Thursday mornings from 10.30 to 12 noon. Every week in term time, the Pushchair Club fills the TRM Centre, giving children, their parents and carers a place to come together, play, sing, chat and enjoy refreshments.

### Room Hire

We make our facilities in the TRM Centre available to hire for a variety of purposes, from community groups to birthday parties. There is the large church hall with a stage, and room hire also includes the use of kitchen facilities if required.

For all information, please visit our website.

### The Quiet Garden

All are welcome to find stillness and peace in the Totley Rise Methodist Quiet Garden. You are invited to come, sit and wonder about our creative God. It is a place of tranquillity and offers an opportunity, in the rush of modern life, to lay down your concerns. You can do this any time during daylight hours.

### Getting and Staying in Touch

The best source of further information is our website, [www.totleyrise.co.uk](http://www.totleyrise.co.uk) for our weekly notices and links to video recordings of many of our services. You can also submit prayer requests, and we are on Facebook at [facebook.com/TotleyRise](https://facebook.com/TotleyRise)

If you can't find what you need on the website, you can email [enquiries@totleyrise.co.uk](mailto:enquiries@totleyrise.co.uk).

## How many Beatles songs can you get?

'IN AN OCTOPUS'S GARDEN' was 'MARTHA MY DEAR', and 'WITH A LITTLE HELP FROM MY FRIENDS', 'WE CAN WORK IT OUT'. But 'I'M SO TIRED' because 'THERE'S A BLACKBIRD SINGING IN THE DEAD OF NIGHT' as well as some 'LITTLE PIGGIES' in 'NORWEGIAN WOOD'.

'NOTHING'S GONNA CHANGE MY WORLD' so now 'I WANT TO HOLD YOUR HAND' because 'HAPPINESS IS A WARM GUN, YES IT IS, AND WHEN YOU PUT YOUR FINGER ON MY TRIGGER' I want you to 'PLEASE, PLEASE ME OH YEAH LIKE I PLEASE YOU!' But then you say 'YOU CAN'T DO THAT!'

'OH DARLING PLEASE BELIEVE ME', 'THERE ARE PLACES I REMEMBER', and 'TODAY IS YOUR BIRTHDAY' 'ELEANOR RIGBY' so 'AS I WRITE THIS LETTER' let 'MR POSTMAN' take it to 'THE FOOL ON THE HILL' who's on a 'HELTER SKELTER' with 'MAXWELL'S SILVER HAMMER'. He's a 'NOWHERE MAN' tell him 'YOU'VE REALLY GOT A HOLD ON ME', and oh yes, 'P.S. I LOVE YOU.'

'HELP ME IF YOU CAN', 'IT'S BEEN A HARD DAY'S NIGHT' 'DEAR PRUDENCE'. 'OB LA DI OB LA DA!!' 'THERE'S SOMETHING IN THE WAY SHE MOVES ME', but yet, 'MY LOVE DON'T BUY ME PRESENTS', so 'ISN'T THERE ANYBODY GONNA LISTEN TO MY STORY?' because 'JULIA' said, 'WHAT WOULD YOU SAY IF I SANG OUT OF TUNE?' Nothing! It was a 'GOOD DAY SUNSHINE' so 'ROLL UP FOR THE MAGICAL MYSTERY TOUR' 'ROCKY RACON!' and meet 'LADY MADONNA', 'SHE'S GOT A TICKET TO RIDE' and 'WHILE MY GUITAR GENTLY WEEPS', 'EIGHT DAYS A WEEK' just 'LET IT BE.'

'YESTERDAY' I was 'LOOKING THROUGH A GLASS ONION' so 'TRY TO SEE IT MY WAY' then perhaps 'WE CAN WORK IT OUT' but 'YOU'RE GONNA LOSE THAT GIRL' because of 'THE THINGS WE SAID TODAY' 'BACK IN THE U.S.S.R.' 'IN PENNY LANE' at 'NUMBER 9 NUMBER 9 NUMBER 9', 'BUNGALOW BILL' was 'TAKING THE EASY WAY OUT'. He said 'DON'T BOTHER ME', 'SHE WAS JUST 17 IF YOU KNOW WHAT I MEAN', she's got 'ALL MY LOVING' because 'THE BEST THINGS IN LIFE ARE FREE' 'ALL YOU NEED IS LOVE', think of 'ALL THOSE LONELY PEOPLE' 'HONEY-PIE'.

'HERE COMES THE SUN', 'MICHELLE MY BELLE', let's go down 'THE LONG AND WINDING ROAD THAT LEADS TO' 'STRAWBERRY FIELDS', then we can 'DO IT IN THE ROAD' 'HERE, THERE, AND EVERYWHERE' because 'IT WON'T BE LONG YEAH', 'IF I FELL IN LOVE WITH YOU'. 'EVERYBODY'S GOT SOMETHING TO HIDE EXCEPT ME AND MY MONKEY' but now 'SHE'S LEAVING HOME' so 'CRY BABY CRY', 'YOU'VE GOT TO HIDE YOUR LOVE AWAY' and 'WHEN I'M 64' 'I'M GONNA CARRY THAT WEIGHT' so 'GET BACK JO-JO!' 'DON'T PASS ME BY' 'LOVELY RITA', now just be a 'DAY TRIPPER' or even a 'PAPER-BACK WRITER'. 'BABY YOU CAN DRIVE MY CAR' with 'LUCY IN THE SKY WITH DIAMONDS' and 'MOTHER NATURE'S SON' and 'THAT BOY!' You can 'COME TOGETHER RIGHT NOW' because 'I FEEL FINE' and remember 'ALL YOU NEED IS LOVE'. 'IN MY LIFE' 'JUST GIVE ME THAT ROCK 'N' ROLL MUSIC' and 'TWIST AND SHOUT' and then, much later in the evening when 'GOLDEN SLUMBERS KISS YOUR EYES' (and as Ringo sings) 'NOW'S THE TIME TO SAY GOODNIGHT, GOODNIGHT, SLEEP TIGHT. DREAM SWEET DREAMS FOR ME, DREAM SWEET DREAMS FOR YOU'

Lorna Marshall

## TOTLEY & DISTRICT DIARY

- MONDAYS** **AGE UK FITNESS** Dore & Totley United Reformed Church, 1.30-2.30 pm. Contact Jo Woodward 250 2850  
**GUIDES**, All Saints Church Hall, 6.45pm-9pm  
**SLIMMING WORLD** Totley Rise Methodist Church, 5pm and 7pm. Call Sarah on 07577 070797
- TUESDAYS** **PILATES** The Old School, Dore, 9.30-10.30am. Phone Sally Kilner 07917 762502  
**TOTLEY OPERATIC AND DRAMATIC SOCIETY (TOADS)** meets 7.30pm to 10pm, in the Guild Room, St John's Church, Abbeydale Road South. For more information call 0114 2351206  
**BABY TIME** Totley Library, Tuesday 1.30-2.15pm (term-times only). Come along to meet other parents/carers and babies. We sing simple songs, have fun and allow time to chat  
**SHEFFIELD MARQUETRY GROUP** 10am-12noon, St Oswald's Church Crypt, Bannerdale Rd. Small friendly group - beginners welcome. For information phone Graeme 07947 127909 or Pat 0114 2819915  
**KNIT, NATTER, CRAFT & CHATTER** Totley Rise Methodist Church, 12 noon-3pm  
**JAZZ IN THE AFTERNOON** 1.30-3.30pm, Totley Rise Methodist Church Schoolroom. A weekly afternoon of all forms of recorded jazz, plus discussion. Tea, coffee and biscuits available  
**YOGA CLASS** 1.15 - 2.45pm at Dore and Totley United Reformed Church. Contact Rachel (qualified level 4 BWY teacher) 07708 996984 or yogaq@hotmail.co.uk  
**WELCOMING PLACES COFFEE MORNING** open to all, Totley Rise Methodist Church, 10am to 12 noon  
**TAI CHI** Dore and Totley United Reformed Church 4-5 pm. Contact Bernice on 07999 617387
- WEDNESDAYS** **PILATES CLASSES** Dore & Totley United Reformed Church, 9.00-10.00am and 10.15-11.15am. Contact Caroline tel: 0781 722 0324, email Carolinenorth1@me.com, www.pilatescarolinenorth.co.uk  
**CARERS' CAFE MONTHLY** Dore & Totley United Reformed Church 10-11.30 am. Contact Jan Outram 0114 278 942  
**COFFEE IN THE LIBRARY** 10.30am-12.30pm. Come and have a coffee and a chat  
**STORY TIME** for toddlers and pre-school children at Totley Library from 10am - 11.30am (except school holidays). Children can take part in weekly themed craft activities, sing songs and listen to a story. £1 donation per child greatly appreciated  
**TODDLER GROUP** 10am-11.30am, All Saints' Church Hall. Details tel. Liz Hayden 07969 826464  
**HEALTH WALKS** 10.30am, meet at Totley Library. Contact Step Out Sheffield on 07505 639524 or email stepoutsheffield@gmail.com  
**YOGA CLASS** 6.30 - 8pm at St Johns Church Hall Totley. Contact Rachel (qualified level 4 BWY teacher) 07708 996984 or yogaq@hotmail.co.uk
- THURSDAYS** **RHYTHM TIME** Baby, toddler & pre-schooler music sessions 9.00-11.30 Details Email: beth.w@rhythmtime.org Phone/WhatsApp: 07748 589468 To book: <https://rhythmtime.net/find-a-class>  
**ROCKCHOIR** United Reformed Church, Totley Brook Rd, 11.30-1pm. See [www.rockchoir.com](http://www.rockchoir.com) or call 01252 714276  
**CHAIR AEROBICS** Totley Library, 12-12.45pm with Laura. An Age UK and People Keeping Well weekly exercise class. £4 per week, no need to pre-book, just turn up.  
**SOCIAL CLUB** Dore and Totley URC fortnightly 2.30-4.30 pm Contact Alison Holden for information 236 0441  
**PUSHCHAIR CLUB** Totley Rise Methodist Church Hall, 10.30-12noon. Tel. 07912 352543 for details  
**PILATES CLASS** run by qualified Pilates Instructor/Physiotherapist for all abilities and ages. 1.30-2.30pm, 5.15-6.15pm and 6.15-7.15pm at the United Reformed Church, Totley Brook Road. Call Emer on 07792 422909
- FRIDAYS** **PILATES** The Old School, Dore, 9.30-10.30am and 10.45-11.45am. Phone Sally Kilner 07917 762502

## DECEMBER

- MON 4th FRIENDS OF GILLFIELD WOOD** Talk by Derek Whiteley on "Nature and Christmas". 7.30pm, Totley Library.  
**WED 13th TOTLEY PROBUS CLUB** 10am in Room 1, Totley Rise Methodist Church. Live Music from the Cellar V Band. Guests are always welcome - we are always looking for new members.  
**FRI 8th MINIATURE TRAIN RIDES- see display on this page**  
**SAT 16th DORE GILBERT AND SULLIVAN SOCIETY** Christmas concert. Dore Methodist Church at 2.30pm. Tickets (£10) will be available by phone on 07565 805405 or via the web at <https://doregass.weebly.com/tickets.html>  
**SAT 16th TOTLEY LITTER PICKING MORNING** 10-11am. Equipment provided. This activity is done at participants' own risk. Children must be accompanied by an adult. Meet Baslow Rd, outside Totley Library. All welcome.  
**SUN 18th / MON 19th TOTLEY HISTORY GROUP Spite-winter Concert.** Ecclesall Parish Church, 7pm. Sheffield Folk Chorale celebrate winter with songs across time and place Tickets £8 from [graham.pratt2013@gmail.com](mailto:graham.pratt2013@gmail.com)

## JANUARY

- WED 10th TOTLEY PROBUS CLUB**, 10am, Room 1, Totley Rise Methodist Church. Talk by Barbara Beard entitled "From Wales to Patagonia". Guests are always welcome - we are always looking for new members.  
**SUN 14th FRIENDS OF GILLFIELD WOOD** Practical Conservation session. For details see FOGW website.  
**WED 24TH TOTLEY HISTORY GROUP**, talk by Hilary Wid-dowson, "Painted Fabrics", 7.30pm, Totley Library. Non-members welcome.  
**SAT 27th TOTLEY LITTER PICKING MORNING** 10-11am. Equipment provided. This activity is done at participants' own risk. Children must be accompanied by an adult. Meet Baslow Rd, outside Totley Library. All welcome.

Abbeydale Miniature  
Railway is supporting

St Luke's

Registered charity number 254402



With our Charity  
Train Rides and  
Christmas Lights Night  
On Friday 8th December  
From 5pm to 8pm

**FREE ENTRY TO  
SEE THE LIGHTS!**

**TRAIN RIDES**  
£2 per person —  
all takings will be  
donated.

- Light refreshments available.
- Parking may not be possible in fields due to weather conditions.
- Last year we raised over £2000 with this event.

We are opposite 283 Abbeydale Road South, S17 3LB. There will be a yellow sign outside our gate showing we are open.



# HIGH TREES CLINIC

Specialist and Routine Private Dental and Medical Clinic located in Dore

NEW PATIENTS WELCOME

APPOINTMENTS FROM £50.00

We're here to help you monitor and optimise your health with our GP and Physical Therapists.  
Keeping track of your well-being should be an essential part of your self-care routine



## DENTAL

- Routine Dental Appointments
- Restorative Treatment
- Fixed braces and Clear aligners
- Teeth Whitening
- Composite Bonding and Veneers
- Emergency Appointments



## MEDICAL THERAPIES

- Medical Examinations
- Occupational Health and Travel
- Vaccinations
- Skin Lesion Check and Removal
- Medical Forms and Referrals
- Blood Tests & Analysis
- Facial Aesthetics



**Tel: 0114 349 3326**

37 Townhead Road, Dore, Sheffield, S17 3GD

hightreesclinic@gmail.com www.hightreesclinic.co.uk

Please call or email the clinic for further information or to schedule an appointment



Fun, developmental music classes!

Join us in

# Totley

All Saints Church Hall

Thursday

Toddlers – 9:30

Babies – 10:15



Also in:  
Greenhill  
Crosspool  
Bents Green  
Bakewell  
Dronfield  
Fulwood

Contact Beth  
beth.w@rhythmtime.org  
07748 589 468

or book here:  
[rhythmtime.net](http://rhythmtime.net)

## Unstone GardenScapes

Let us transform your garden

From concept to completion

Fully insured.

Over 25 years experience.

Portfolio available.

Decking Fencing Patios Turfing Planting  
Or just a general tidy up

Call Jason for a free quote  
Mobile 07791069360

# ACTIV PHYSIO

Call us on **0114 235 2727**  
to book now!

Evening &  
Saturday  
appointments  
available



Say Goodbye to aches & pains and make an appointment with our team of friendly Physiotherapists at our **Totley Clinic**

- Back & Neck Pain
- Headaches
- Joint & Muscle pain
- Post Operative Rehabilitation
- Sports Injuries & Massage
- Women's Health Issues
- Acupuncture
- Home Visits & much more...

**Open**  
**Monday - Saturday**  
**5\* Google rating**

E: [admin@activphysiotherapy.co.uk](mailto:admin@activphysiotherapy.co.uk)  
W: [www.activphysiotherapy.co.uk](http://www.activphysiotherapy.co.uk)  
A: 88, Baslow Rd, Totley, Sheffield.  
S17 4DQ

# Millthorpe Nursery Season's Greetings



We wish you all an enjoyable  
Christmas and New Year  
and look forward to seeing you in 2024!

Millthorpe Lane, Holmesfield, S18 7SA

01142 890334



**The nursery will re-open in early February**



**GRANT'S  
CLEANING  
SOLUTIONS**

**Window Cleaning & Gutter Cleaning**

**Please Contact Benjamin Grant For A Free Quote:**

Tel: 07780432717  
Email: [info@grantscleaningsolutions.com](mailto:info@grantscleaningsolutions.com)  
Web: [Grantscleaningsolutions.com](http://Grantscleaningsolutions.com)

## Very Helpful Licensed Waste Removal

We offer single item or part house clearance services

We collect for disposal/recycle sheds, garage or outbuilding contents

We also do single item removals or collections

We don't collect beds or sofas

**07720 845 326**

Text now for more details!



Karl Nuttall-Allsop 23 South Street North S43 2AA



E mail [veryhelpfulman@yahoo.com](mailto:veryhelpfulman@yahoo.com)



**Editor: Phil Harris**  
Tel. 07956 858944 or email:  
[editor@totleyindependent.co.uk](mailto:editor@totleyindependent.co.uk)

**Advertising: John Perkinson**  
Tel. 236 1601 or email:  
[advertising@totleyindependent.co.uk](mailto:advertising@totleyindependent.co.uk)

**Proof reader: Margaret Spencer**

We welcome items submitted for publication, which may be left at or sent to 'Totley Independent', 2 Main Ave, Totley, Sheffield S17 4FG

**[www.totleyindependent.co.uk](http://www.totleyindependent.co.uk)**

Printed in the UK by  
The Magazine Printing Company  
using only paper from FSC/PEFC suppliers  
[www.magprint.co.uk](http://www.magprint.co.uk)

## 'Totley Independent' for February/March

The next issue of the Totley Independent will be published on

**Saturday 3rd February**  
**COPY CLOSE DATE for this issue**  
**will be**  
**Saturday 13th January**

Published by Totley Independent CIC. Totley Independent is a registered Community Interest Company, number 07750166. We welcome letters about local affairs and will publish as many as possible. Items will not be considered that are submitted anonymously. The views expressed are not necessarily those of the editor or the editorial staff and must not be attributed to them. © Totley Independent 2023