

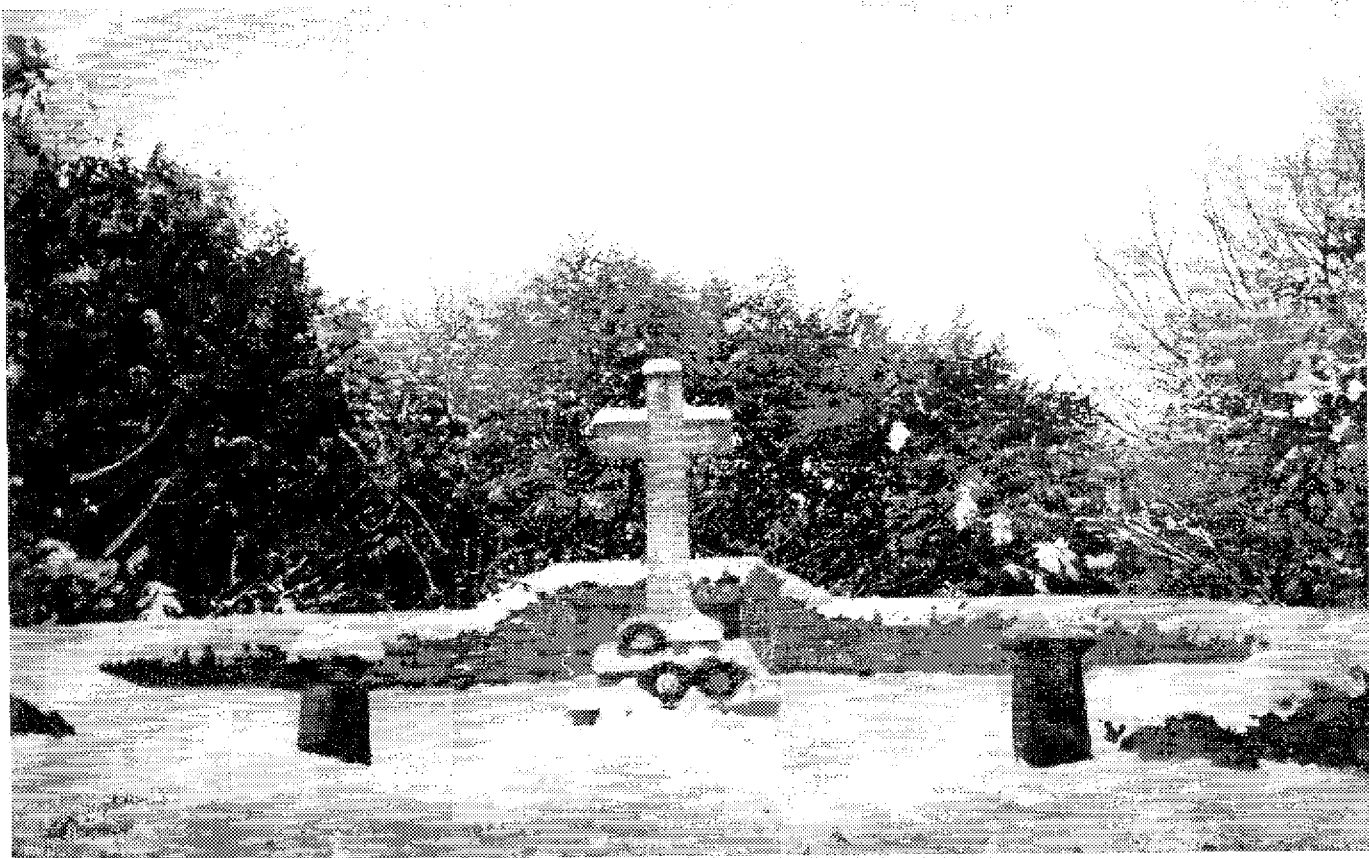
TOTLEY INDEPENDENT

PUBLISHED BY THE TOTLEY RESIDENTS ASSOCIATION SINCE 1977

NOVEMBER 2002

No. 258

15p.



REMEMBRANCE SUNDAY

I have to admit I never thought much about Remembrance Sunday until, when I was living in Kenya and was about 25 years old, a friend of mine, a New Zealander, received an invitation to a "Sundowner Party" (the local equivalent of cocktails) from his High Commissioner to celebrate ANZAC Day. This is the Australia and New Zealand equivalent of Armistice Day. He was disgusted, and wrote back to point out that back home this day was spent quietly in respect for those who gave their lives, and their families, not by "celebrating". He declined the invitation.

My appreciation of how much more the day meant to others than to me came when I was curate at Ecclesfield in the 1980's. On Remembrance Sunday, gathered around the War Memorial in the church grounds, I realized that the couple in front of me quietly weeping were the parents of a young sailor who had died on the HMS Sheffield during the Falklands conflict. I was forced to think back to fellow police officers I knew who were killed during the Mau Mau Emergency in Kenya, and reflect that their families would never have forgotten them.

Later, as Vicar at Woodhouse I found that many of the names on the memorials in the square and the church were names of families whose members still lived in the local community. One lady approached me after the first Remembrance Sunday service to ask me to take off the final 'e' added to her brother's surname on the church's war memorial tablet. It had been spelled wrongly for 40 years.

Later, my son was involved in the Bosnian conflict as a member of the UN forces with his English Regiment. He was fortunate to have survived a serious accident when his reconnaissance tank rolled over when a track snapped. I have noticed several aspects of Remembrance Sundays.

Those most involved in the front line horrors of war are usually the last to want to talk about those experiences. They certainly do not get together to "glorify war" as those outside their numbers so often seem to think is their reason for meeting. They know too much about it.

What so many value is the comradeship of their service experiences, the memories of being bound in with a group of people who shared a common experience perhaps even including situations in which their lives depended on each other. Even those whose service was in peace time knew comradeship and many have been known to look back and wish that their subsequent work places could have had similar levels of trust and friendship as well as leadership.

If, having given due respect and salutation to fallen comrades, or relatives, ex-service people decide to get together for a few jugs, what is disrespectful about that? One thing is certain, those who have been remembered would not begrudge them.

So I will be there as usual when we gather around the cross at our church at the end of the morning worship. My prayer is now that there will never need to be new names to add to these memorials.

Rev'd Brian Cranwell

Whisperer

The new cottages on Totley Rise are nearing completion. With 2 cottages now knocked in to one and has become yet another hairdressers under the name of Blow? At least it is not another office.

Baslow Road. A car parked on the footpath near Cross Scythes has been there for several weeks obstructing the footpath for people going up to school etc, and most of all there are people in invalid chairs who are having to go in to the middle of the road. Why are the police not able to get it removed they must know who the owners are.

Totley Post Office .It looks like the end of an era here with it closing yet again can the Post office counters please tell us what is going on?

Baslow Road. Spring bulbs are to be planted down the central reservation of the dual carriageway,

Totley Scouts. A letter from Jeff Salt now living in Paignton who was one of the original eight who started the All Saints Totley scout group says he has wonderful memories of the group, but says it would be nice to see some occasional scout reports of their activities these days.

The report above is probably the same reason why nobody knows what is happening to all the other groups in Totley like the Athletics club, Football club, Cricket club and Bowling club, no one can be bothered to tell us what is happening.

Totley Post Office

Are you concerned about the future of the Totley Post Office? If so, there is a petition for you to sign in Totley Library.

Bottle Banks in Totley

In 1988 my job in the glass industry moved from London to Sheffield and we came to live in Totley. I joined the TRA Committee and began lobbying my colleagues in the glass recycling business, for bottle banks in Totley.

I identified a site at Totley Rise but the contractor would not put a site there because, they said, Totley, with only 3000 people, was too small. If this were Germany, Netherlands, Italy, Spain, Denmark, Austria, etc., we would have up to 10 bottle bank sites in Totley and, hopefully, be achieving the recycling rates that they do. We are bottom of the European glass-recycling league.

In April this year, my Company took over the glass-recycling contract in Sheffield and I have been working with Onyx to get banks here. In August I did a tour of S17 with an Onyx representative and identified about 8 potential sites in Totley and Dore.

I have now been told by Onyx that the first 2 bottle bank sites in Totley will be installed in the near future.

Glass is the easiest and best material to recycle. Recycling jars and bottles greatly benefits the environment by saving energy and reducing the quarrying of raw materials. Do not worry about removing the labels, but it would help us if you took off the lids or caps. Please rinse the jars and bottles and put them into the right colour bank. Blue bottles in the green bank please.

All I ask now is that the people of Totley use the banks.
Danny Barlow

Glover Road Clean Up

On Sunday 13th of October, Glover Road residents decided they had waited long enough for the bank, which they looked at daily from their homes, to be cleared of rubbish. Grass and weeds had been left to grow unchecked. A variety of litter had collected in the long vegetation and overhanging the pavement. The area looked unsightly. In the past a Glover Road resident had kept the grass cut.

A decision was made to tidy up the bank by the residents themselves. They approached Street Force, who agreed to provide litter-picking equipment, brushes, shovels etc. and pick up the rubbish collected.

Totley Residents insurance policy would cover people as they worked. For safety reasons it was felt necessary to close Glover road. The Council Highways department agreed to this, Emergency services were informed. Residents were also informed of the clean up and asked to help.

The road was coned off at either end from 12-00 noon until 4-00 p.m.

Work began before 10-00 a.m., when grass round the bus stop at the Baslow Road/Glover road corner was strimmed, the pavements cleaned and the grass/rubbish bagged. Residents worked steadily from the Totley Rise end raking up the empty bottles, paper, fast food containers and wooden planks etc. as they moved along they found asbestos, old carpets, broken bottles, mouldy cardboard and growing trees.

Other residents began to tidy up at the Mickley Lane end of the road. The fronts of elderly residents, not able to come out and sweep, were tidied up by those more able.

Children helped by carrying tea and biscuits to the workers and keeping the cones in place at the ends of the road.

They enjoyed skate boarding and cycling down a traffic free road.

By 4-00 p.m. the workers, tired and stiff were satisfied with the results, 47 black bags of rubbish had been collected. The road was re-opened to traffic. It is hoped Glover road will remain tidy for some time.

A big thank you to all the residents who gave up their Sunday to help improve their environment.

Avril Critchley, chair T.R.A.

P.S. The brushes, shovels, and litter pickers are still on Glover Road if any other road would like to clean up their environment.

Butts Hill in Bloom

The residents of Butts Hill have taken matters into their own hands after repeated telephone calls to the Sheffield council over several months brought no results.

A stretch of wasteland by the roadside was overgrown with weeds and tall grass that the Council apparently used to mow, but now seemed to be forgotten. The residents patiently waited for the promised official to view the problem but when no one came they decided to take action.

Mr. Martin Champion of Green's Cottage set to and cleared the area and with small donations from the other residents, organised the new planting. The overgrown patch is now transformed with heathers and small shrubs and in the spring we will be able to see the 100 bulbs, which have also been planted.

Mrs. Annie Wortley says all the residents are delighted with the new look and would like to thank Martin for his time and effort.

Pauline Perkinson

MAINTAINING STANDARDS

The recent unfortunate events concerning "A" level results has raised, yet again, the question of standards and how they are, or can be, maintained year after year.

It is quite disgraceful that students suffer the consequences of a system apparently unable to cope with the huge numbers involved in the time available, let alone the mismanagement which seems to crop up too frequently.

Many people seem to get hot under the collar at the idea of marks at which grade boundaries are set can change from one year to another. When I was a pupil we always assumed this was done.

I have to admit my personal experience of similar public examinations is not very recent - before World War II in fact. In those days it was necessary to succeed in a whole group of subjects at one and the same time to be awarded School Certificate, Matriculation and the Higher School Certificate. Now students are awarded grades in individual subjects so how can parity be judged?

I am sure there is even considerable difficulty in maintaining consistency of marking an individual question in one year. My gut feeling is that it is probably easier in a scientific subject, particularly say mathematics, than in say literature, where judgement is more subjective, and hence more difficult to maintain consistency across a large number of examiners.

I am not a trained statistician but I would have thought that with such large numbers involved, it would not be unreasonable to expect roughly the same percentage of students to attain each grade each year.

Don Ashford

TO WHOME IT MAY CONCERN

I feel that I ought to apologize but the problem is that I don't know to whom this apology is due! The difficulty arises because of poor eyesight. This has become an increasing problem over the past few years and it has now reached the stage where I often do not recognize people until they are fairly close. Thus, I often see people on the opposite side of the road without knowing who they are.

If you are one of those people who feel that I ought to have spoken to you, please accept this apology. It would help if you speak to me (if you want to!!) first. I would hope to respond. If I fail to respond in these circumstances you are welcome to tick me off but please be gentle about it!

Maurice Snowdon.

PEAK DISTRICT EVENTS

Information from the "Peak District 2002" the official guide to the National Park. These events can be seen in the free guide available throughout the Peak District or by visiting their web site www.peakdistrict.org

NOVEMBER

19th November DEMONSTRATION OF FLORAL ART
Baslow Village Hall, 2pm. 01246 582360

23rd November - 6th January 2003 CASTLETON CHRISTMAS LIGHTS. Daily from 3.30pm - midnight. Switch on Sat 23rd, 4.30pm. For late night shop opening, Santa's grotto, horse and cart rides, please telephone to avoid disappointment. 01433 620571/620343.

DECEMBER

1st December - 6th January CASTLETON CHRISTMAS LIGHTS. See 23 Nov for details.

6th - 9th December BAKEWELL CHRISTMAS STREET FAYRE. Four days of fun, including stalls, hot chestnut sellers, Christmas markets and festive entertainment.

7th December - 6th January 2003 GREAT HUCKLOW CHRISTMAS LIGHTS. Lights throughout village, every evening from dusk. Switching on ceremony 7pm on 7 December 01298 871593.

17 December DEMONSTRATION OF FLORAL ART
Baslow Village Hall, 2pm. 01246 582360.



SHEFFIELD RSPB CELEBRATES ITS 21st. BIRTHDAY

Sheffield local group of the Royal Society for the Protection of Birds celebrated its 21st birthday in November 2002.

The highlight of the group's ongoing birthday celebrations will be a bird identification workshop, entitled "What's that bird?" led by the well-known ornithologist, lecturer and raconteur, John Wyatt. The day will be based around slides and sound recordings and is aimed at all categories of birdwatchers from beginners to the experienced birder. It will be light-hearted with some audience participation. The workshop will be held on Saturday 29 March 2003 at St John's Church Hall, Abbeydale Road (near Twentywell Lane), commencing at 10.30am with doors open at 10.00am. The day's activities will finish at around 4.00pm. The price of the tickets is £10 per person, which includes admission, a buffet lunch and tea and coffee during the day. Come and join us for a day of education and entertainment. You will not be disappointed! Tickets are available from John Badger (247 6622) and Hilary Sills (235 6598).

Sheffield local group, which has a membership of 470 throughout Sheffield, has a strong representation in Totley.

There is a regular programme of monthly midweek local bird watching walks from September to June and these cater for all ages and experience. Everyone is welcome to join us and share the pleasure of not only our local birds but also our varied natural history. The walks are usually followed by a sociable lunch at a local hostelry when we reminisce about what we have seen or might have seen! It is all very friendly and informal.

For our more intrepid travelers, the group organises monthly field trips by coach to bird reserves or locations further afield. Again the atmosphere is relaxed with the emphasis on seeing birds well, rather than seeing vast numbers, although the more serious birdwatchers have the chance to do their own thing.

By far the most popular of the group's activities is the monthly indoor meeting when we are entertained by a guest speaker with slides, usually (but not always) with a 'birdie' theme. Many times we have been transported to far-flung parts of the world to enjoy and marvel at the flora and fauna of places we can only dream of.

A copy of the group's full programme of activities, the latest newsletter and any other information may be obtained from the Group Leader, John Badger (2476622), the Membership Secretary, Peter Wingfield (2398155) or the Field Trips Organiser, Hilary Sills (2356598) or visit our website at www.rspb-sheffield.org.uk Give us a try - we do enjoy ourselves.

J Badger Group Leader

MEMORIES OF TOTLEY

Credentials.

I was born on The Grove. I have always been pleased to tell people that I started life in Totley. I have trafficked in the idea that at that time it was part of Derbyshire. But in a recent issue I've read that that stopped in 1935 and I wasn't born until 1936. I also have said as part of my patter that Totley is mentioned in the Doomsday Book, though known then as Totingly: hope I got that bit right. I went to Miss Richardson's school on Totley Brook Road, no, not to Miss Trott's on Grove Road anyway, I think that was for girls only. I went to the Cubs and to Scouts, at first in a downstairs room of Totley Hall and later in the Scout Hut, on the left just before the tar road ended and the track began toward Gillifield Woods. Piano lessons were from Madame (sic) Scaife also on the Grove. They started me very early and it was a big relief to learn that I did not have to take our piano with me. As an adult, for about a decade I was the organist at the church near the end of Totley Brook Road, mostly during the time of Rev. Duckworth. A spin off was that I played for so many funerals that I became a bit desensitised, and attending funerals has not been so hard as I reckon it might otherwise have been.

Dark Side

One experiences that gave me an early introduction to how nasty humans can be, occurred in an area of bushes a little uphill from that end of the Aquaduct, and not far from. I think Terrey Road, some big boys had some little boys at their mercy. Thumping and kicking seemed less awful than the following. They picked on one at a time and told him to go home. As this little boy walked away from the group, a big boy went up behind him, put his hands on his shoulders, put his knee in the lower back and pulled. The little boy went down with a thud. This happened repeatedly to each little boy. This next memory is nothing like as bad. I had been 'playing out' with two boys from further up The Grove. That evening Mother had my brother and me in the bath. The water was white with suds. I was supposed to be looking after the soap. At one point, after I'd let it slip under the surface, Mother said, "Where's the soap?" I said "Up pig's arse, on't second shelf". She said Ian!! in the most staggered and aghast way. No other punishment was needed. But I was really punished (smacks on bare bum) for being seen to ride my "trike" down The Green, the steep bit, and out into The Grove, with no chance of stopping, had there been anything coming. That learned me.

Bit Naughty

Also near the Aquaduct we treated as a tight-rope the wooden housing that was about 3 feet above ground, about 5 inches square in section, and ran at the top of the cutting from the Aquaduct to the tunnel entrance, presumably carrying cables. A sort of tramp was known to live in a shed near one of the first pepper pots "venting the tunnel, not far from the Crown Inn and the Cricket Inn. We explored, he came out and chased us. Never went back. We boys planned to get some girls from up The Grove, either into an air raid shelter or into one of the dens in the hedgerows around Dore fields. Came to nothing. I'm especially glad we did not enact the fantasy about Laburnum seeds! Over a wall behind some of the odd numbered houses on The Grove was the garden of Totley Grange. In it was a derelict shed that looked as though it had been used as some kind of office. Some boys took some of the stationery. I've always thought I didn't could be kidding myself.

Bit Altruistic

We invited boys from Totley Orphanage to tea. Escorted them there and back. I think Mother fixed this up with the staff on

account of my sympathy. We did a bit of shopping for Mr Inman. His house was beautifully positioned on a track running from the top of The Grove to the old village. He had worked in the signal box near the footbridge that crossed the cutting between Totley Brook Road and somewhere near the end of Grove Road. In retirement he offered an explanation of the wet summer. When he was working, trains had got up to 60 mph. Now he told us, planes were going at 100 mph. (actually, one had just broken the sound barrier). Planes at 100mph. were unnatural and bound to mess up the atmosphere and cause more rain. From time to time we heard squealing and screaming, and oldies told us it was from pigs being killed at a nearby farm (not Mr Bramhall's where we got the straw for the rabbits). This was one of the early influences that led to Vegetarianism. Mother "put something back in". She ran the Cubs for a few years.

Air Raid Shelters

Father taught us our nightly prayers, which started with, "God bless Mummy and Daddy", and ended with "God bless all the Soldiers, Sailors and Airmen, and make sure we win the war". Our air raid shelter was made of "reinforced concrete" Father was a Metallurgist and got us to respect rods of steel embedded in slabs of concrete. Ordinary folk had corrugated iron shelters, and I felt a bit twee over ours, not that the word twee had come out at the time. When the air raid warning sounded, I made sure I took my Dinky car with me down the garden to the shelter, in case the house was hit. One night, after the All Clear had sounded, we were going back to the house. I was gazing ahead and for the first time that I can remember, marvelling at the stars. Father, who ran the lab at a steel works in Ecclesfield, nudged me. I turned round. The sky was orange. He said with a catch in his voice, "That's Sheffield burning". I cried and still do. The next day or it may have been a day or two later, he came back with silver salt and pepper pots, which he had rescued from the shattered Director's Dining Room of the Attercliffe branch. I think this was one of the many times when he said things to Mother that we were not supposed to hear. I surely learnt how awful humans can be to humans.

On a nicer note, I think it was after the war, but it could have been during the war, that we started to receive food parcels from relatives in Australia.

German Prisoners of War.

Gillifield woods were being cut down. This was either during or after the war. German POW's did the sawing and chopping. They were guarded by a few of our soldiers. There must have been a lot of trust because the soldier's rifles were lying in the grass or tree stumps. Once, we kids were picking blackberries. Two Germans left their work and picked loads of blackberries quickly and teamed them into our hands. Because there were leaves and stalks and bits of twig mixed in with the berries, I assumed the National view of Germans must be right. Years later I realised the decency in those chaps. We went to the Baptist Church on Cemetery Road in Sheffield. In those days the 45 bus did not start until late morning on Sundays. So we walked to Beauchief to get the tram to get to the morning service. The bus was OK for coming back and for Sunday school in the afternoon and for evening services. I think it must have been after the war that Baptist Germans were allowed to come from the Lodge Moor camp to that church for morning services. Sometimes, some of them and my family went for lunch to the house of a lady on Oakbrook Road, with whom my Father had "digs" when he was a student. Even though these Germans spoke a bit funny, I remember being pleased that they seemed to be quite nice. In a recent issue of Totley Independent a writer refers to the Flying Fortress that

crashed in Endcliffe Park. This was close to where the digs lady lived. The story was that some children went up to the crashed plane. Before it went up in flames, an American airman broke some glass with his fist and asked the children to go to their homes and come back with an axe.

Petrol

During the war men came to the door-asking Dad to sell his car to them. He wouldn't. He kept it in a garage in a row of garages (3rd from the last) off The Green, just after the houses stopped and the road went narrow, down to Baslow Road (not far from the first stop from the Terminus at the Cross Scythes, and about opposite the top of Main Avenue, and not far from the Prefabs, though they weren't there then!). After the War there were a few black cars about, and we tried to believe the claim that they were all "official cars". Then came the day when petrol coupons came out. Dad had been doing things to the Singer Nine, including pumping up the tyres, and letting the whole car down off the blocks. There came the day when he came home with a can of petrol. Mum stayed at home with our Sister, the youngest. My brother and I went with Dad to the garage, he put in the petrol, pushed out the car, put in the crank handle, turned it, and the engine sprang into life. I could hardly believe it! I sure was impressed. Among the trips in the next few years were runs out into Derbyshire. We kids used to try to be the first to say, "Look there's another", meaning another car. It was a big total if it was three or four between Totley and The Surprise, and back!

Dr. Ian C. Murphy

Sheffield Bach Society



Registered Charity No 011146

Conductor - Peter Collis

**Saturday 16th. November 2002
at 7-30 pm.**

Sheffield Cathedral

CORONATION ANTHEMS

Handel

MASS in G and MASS IN B flat

Schubert

Tickets £9-00 (Concessions £7-00)
Students £4-00 at the door

Tickets available at the door or from
Sheffield Music Shop, Broomhill (0114)266 1000
Blue Moon Café, St. James Street(0114) 276 3443
Or by post - SBS, 3, Tapton Mews, Tapton Cres. Rd., S10
5EA

If you would like to know what time the concert will end,
please ring 0114 268 3812

Totley All Saints School 'in the money'



Star School Awards winner, Audrey Taylor receives her prize from Brendan Ingle. Looking on are from left, runner-up Jeanne Foster, Sandra Goddard of the Nottingham Building Society and Sylvia Doherty, right, runner-up.

A cheque for £750 was awarded to Totley All Saints' School at the Star offices on Friday 4th October.

This year the Star Schools Awards were given to volunteers in schools and the prizes were once again provided by the Nottingham Building Society. The cheques totalling £3,000 were presented by Brendan Ingle the Sheffield boxing legend. Heather Johnson, a parent, nominated me, Jeanne Foster, describing the help I give in Totley All Saints' School including playing the piano for hymn practice, assemblies and concerts, editing and publishing the school newsletter, Totley Times Four and helping, with others from the church, with the catering on sports days and the Autumn Fayre. Based on this information, I was one of the runners up and received a cheque for £750 for the school.

Paul License of The Star said the intention of the competition was to highlight the benefits of volunteering. In the words of Brendan Ingle, "the most important thing anyone can give is their time, because once it's gone, nothing can bring it back". Children value your gift of time but in turn you as the volunteer benefit from a feeling of self-worth.

The choir in school sang a lovely song to me in assembly on Wednesday, namely:

I Love You. I was very moved by it. What better reward could I ask for? The money will be used to provide a seated area in the school grounds for children to sit and chat at play and lunch times.

Odd - Jobs

of Sheffield

Wall & Floor Tiling..
Wallpaper hanging..
Painting & Decorating..
Artaxing..

Need a light bulb changing ?
Driveway sweeping ?
Flat pack building ?

**No job too
small..**

Contact Gerry Park
..to arrange a
free estimate on:

Tele: 0114 2748900
Mobile: 07900 040498
e-mail: fugglesort@lineone.net

T.O.A.D.S. AUTUMN PRODUCTION

Our play for November is the premiere of Hugh Steadman Williams new play "A Class of Their Own". Hugh was artistic director of the Westminster Theatre in London from 1976-1990 and has been Chairman of Westminster Theatre productions since 1987. Although he and his wife live in Kent, he was brought up in Rotherham where his father was Congregational Minister, so he remembers this area well.

"A Class of Their Own" is set in the kitchen of a Manor House which will be a new challenge for our Chairman and set designer Jeff Bagnall as it also requires an Aga!! Well he's always complaining that he and Paul Pratt get bored with building the standard box lounge. The story concerns the widow and daughter of the Manor, and the gardener and his family who live in the grounds. No - don't panic!! It isn't a modern "Lady Chatterly" - far from it!

We have had to increase our ticket prices by 50p as costs have risen over recent years - the hire of the hall for the week is nearly £275, Royalties around £200 before we start thinking of anything else, but at £3 a ticket and £2.50 for Concessions, I think you would agree it is still a cheap night out.

"A Class of Their Own" can be seen at St. John's Church Hall, Abbeydale Road South.

Wednesday to Saturday, 20th - 23rd November 2002 at 7.30p.m.

Tickets in October from me, Kate Reynolds on 2366891, or by calling with your order at S.E.Fordham Opticians on Totley Rise.

KING ECGBERT SCHOOL ASSOCIATION

QUIZ NIGHT

Friday Nov 15th - Doors open 7-30 p.m. for 8-00 p.m. start.
Entry £3-00 per adult, bring your own refreshments.

TABLE TOP SALE

Sat 23rd. Nov 10-00 a.m. to 12 noon

£6 per table and 50p admission on the door

Contact 23607587

Alison Bushnell

COFFEE MORNING

SATURDAY 9th. NOVEMBER

At TOTLEY RISE METHODIST CHURCH

10-00 a.m. TO NOON

In aid of **NATIONAL CHILDREN'S HOME**

Various stalls, cake, white elephant, stationery etc.

Admission 50p inc. coffee and biscuits

ALL SAINTS' CHURCH LADIES CLUB

Very many thanks to everyone who supported our Coffee Morning on Friday 27th September.

We raised £205 for MacMillan Cancer Relief Horizons appeal at the Northern General Hospital.

Sheila Parkin

SERVICES AT ST. JOHN'S UP TO AND INCLUDING CHRISTMAS

17th. November -6.30 p.m. A COMMEMORATION SERVICE

A meditative service to loved ones who have died - especially during the last year. Come and light a candle in their memory.
ALL WELCOME

1st. December -6.30 p.m. ADVENT SUNDAY.

An Advent Carol Service, including Advent Readings and Music sung by the choir.

8th. December - 5.00 p.m. - A CHRISTINGLE SERVICE

A Family Service with carols and the lighting of the Christingle candles and a collection for the **CHILDREN'S SOCIETY.**

22nd. December. THE TRADITIONAL SERVICE OF NINE LESSONS AND CAROLS.

With Carols sung by the choir.

24th. December. 5-00 pm. CHRISTMAS EVE FAMILY SERVICE with carols.

11-30 pm. MIDNIGHT COMMUNION.

A sung Parish Eucharist to welcome the Christ Child.

25th. December -9-00 p.m. - CHRISTMAS DAY FAMILY SERVICE.

A family service with communion and carols.

DO FEEL WELCOME TO JOIN US AT ST. JOHN'S FOR SOME OR ALL OF THESE SERVICES.



"FANCY THAT STREAKER BEING
SEEN RUNNING UP LEMONT
ROAD, BY ALL ACCOUNTS IT
WAS THE FULL LE MONTY!"

BONFIRE & FIREWORK EXTRAVAGANZA

A BONFIRE and Firework extravaganza will light up the skies over Totley on Friday.

November 8th. 6-30 pm. For 7-00 pm. Start.

The popular annual event will take place in the grounds of Totley Primary School, Sunnyvale Road, and is organised by the school's Parent Teacher Association.

The event, which offers a warm welcome to the public, features a range of food stalls selling everything from hotdogs to homemade flapjack, coffee and cakes.

Tickets priced at £1.50 for adults and 50 pence for children are available in advance from Totley Library or Totley Primary School office. They can also be bought on the gate. Proceeds will go to school funds.

Contacts:

Carole Windsor, PTA chair on 2352042

Penny Baddeley, publicity on 2353240



**GENTS
HAIRDRESSING**
Don Allott
joins
Fred & Ginger's



Baslow Road
Sheffield

Tel No. 0114 2350362

Wednesday, Thursday, Friday

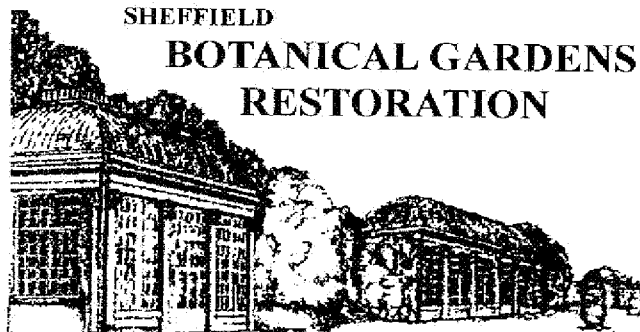
& Saturday from 9-00a.m. £6-00

Wednesday & Thursday Pensioners Special £4-70

Walk in service and appointments available

SHEFFIELD

BOTANICAL GARDENS RESTORATION



Phase II of the restoration, the Pavilions, is due to be completed by the end of October. They look wonderful. The three domes are now joined together by glass walkways, known as "ridge and furrow". They will be planted in spring 2003 with plants from warm temperate climates such as Australia, New Zealand and South Africa.

The friends of the Botanical Gardens would like to thank every one who has continued to help with the Restoration Fund by supporting our plant sales throughout the year. To complete the Restoration of the gardens, we still need £340,000 to access the rest of the money from the Heritage Lottery Fund. The latest fund raising idea is to ask people to sponsor a pane of glass. To do this costs £25 a pane. It could be done as a gift or in memory of someone.

The donor receives a certificate with a plan marking which pane of glass has been donated. Forms to sponsor glass can be found in Totley Rise Post Office, along with cards and tea towels.

A special thank you to Katharine and Lindsey who have been selling cards for some time as their way of helping the Garden Restoration Fund.

The first Plant sale of 2003 will be held in the Gardens on Sunday 16th. March, 2-00 p.m. to 4-00 p.m.

We look forward to seeing you there.

Avril Critchley, Deputy Chairperson

SHEPLEY SPITFIRE

KIMBERLEY ALES

Tel. CAROL or TONY

236 0298

NEW EXTENSIVE MENU

From 10th. JUNE

MON. to SAT 12 to 2-30

& 5-30 to 8-30

SUN. CARVERY 12-00 to 4-00

**QUIZZES + JACKPOT PRIZES ON
THURSDAYS + SUNDAYS**

STONES - CARLING - STELLA

**OPEN ALL DAY
EVERY DAY**

Bill Allen J.I.B. APPROVED ELECTRICIAN

HOUSE REWIRING SPECIALIST

**FREE SAFETY CHECK
AND QUOTATION**

EXTRA PLUGS - LIGHTS

REPAIRS

AUTOMATIC OUTSIDE LIGHTS

**FOR FREE FRIENDLY
ADVICE
RING**

TOTLEY 262 0455

R Rose & Co

**Chartered Accountants and
Business Advisers**

*Specialist at looking after the
affairs of small business.*

For a free initial consultation contact

Roger Rose FCA

**621, Chesterfield Road
Woodseats
Sheffield S8 0RX**

Tel: 0114 281 2331

Fax: 0114 281 2171

Email: roger.rose@virgin.net

NOVEMBER GARDENING TIPS

Time has been flying again it's November already time for tidying up, clearing leaves, spiking lawns, dividing some of the overgrown perennials, insulating the greenhouse, cleaning heaters, ordering paraffin. Remember the birds they will be needing the food that you put out, the thing to remember once you start it is essential that you continue on a regular basis as they come to rely on it. I am just extending my pond to enable the birds easy access to bathe, the existing pond is too deep so I am making a pebble beach which slopes so they can select their own depth of water, that should keep them happy though I don't think I would fancy a dip in this cold weather.

FLOWERS

As the weather deteriorates it's important to get as much tidying up done as possible, dig over any vacant beds. Complete the planting of Spring bulbs, cover or wrap any tender plants, use straw or bubble wrap, be sure to leave space for ventilation, don't wrap too tight or they will rot. Lily of the valley can be planted now they need a shaded position, water side plants, such as astilbe and trollus can be planted now it's not a good time to move true aquatics or plant into the water. Prick over flowerbeds with a fork (not too deeply) apply a dusting of bonemeal, protect any soft leafed alpines by covering with glass on supports, they must have air circulating round them. Lift border chrysanthemums and place them in a cold frame or greenhouse in a box of light soil watch out for mildew and dust with sulphur this will usually cure this. Keep an eye on the bulbs potted up earlier they must be kept moist (not wet) watch out for mildew and deal with it. You could bring into light any that have developed a good root system for bringing on earlier. They will not need high temperatures 60 degrees F day time 50 degrees night will be just right at first, increase to 70 degrees F once the flower buds have formed.

VEGETABLES

Dig over vacant plots, add compost or farmyard manure, do not add lime if you are applying manure. Leave the digging rough so that the frost can work on it. Check any stored vegetables remove any suspect ones. Make sure your cauliflowers are protected from frost by bending over some of the leaves. Lift and store Jerusalem artichokes, parsnips, horseradish and salsify before the frost makes them too hard to dig them up. Keep hoeing all over wintering vegetables to keep weeds from getting established. Remove any yellowing leaves from Brussels sprouts, pick them from the bottom up a few off each plant.

TREES, SHRUBS AND FRUIT

Prepare the ground for planting all kinds of trees and bushes, canes etc. Dig as deep as possible and work in some manure or compost with a little bonemeal added. Prune fruit trees trained on walls or fences. Make sure that all supports and ties are firm. When buying fruit trees make sure they are a dwarf or semi dwarf stock if your garden is small. This month is a good time to deal with those neglected trees and bushes, take out all cankered branches and crossing ones open up the centre to give light and air. Trim the edges of cuts with a sharp knife and paint with arbex or similar. The end of November is a good time to plant blackberries and loganberries try one of the thornless varieties. Keep an eye on stored fruit, particularly pears take out any suspect ones, and pears that are beginning to mellow should be taken indoors for use.

GREENHOUSE and INDOOR PLANTS

Give the greenhouse glass a good clean inside and out to maximise any light. Ventilate cautiously only on fine days, close doors in any case by 4.00pm. Now is the time to prune grapevines cut back the side growth to within one or two dormant buds of the main stem. Pot up Lily of the valley crowns just cover them with soil. Keep most plants on the dry side, pot on any cuttings which have made a good root system. Keep them in the propagator until they have got over

the stress of re potting., give as much light as possible. Remove dead leaves etc from pot plants, dust with flowers of sulphur to prevent fungus growth. Cut back chrysanthemum when they have finished to within 5 to 8cm (2 to 3 inch) of ground level, this will encourage the roots to throw up sucker shoots which will make ideal cuttings later on. I find that insulating the greenhouse with bubble wrap helps to keep plants during cold weather and helps keep down heating costs. (Make sure you buy bubble wrap, which is UV, stabilised it lasts longer. I have not lost many fuschias since using it.

LAWN

The lawn sowing season is almost over and the lawn mower needs to be cleaned, overhauled and put away in a dry place, if it needs sharpening etc now is the time as it is usually cheaper at this time. Clean up leaves regularly, spike and sand areas which are prone to being soggy in wet weather. Keep edges trimmed it makes the lawn look cared for. Cheerio for now.

TOM

Busy Bee.

PUZZLE CORNER

Prime Numbers Error

I am grateful to Mr. Capewell for pointing out my error. I am also grateful to Mr. A D Anderson who also pointed out the error and kindly delivered to my home three pages about prime numbers he got from the Internet.

I have to confess I had thought a Prime Number was defined as a number divisible only by 1 and the number itself. May I therefore humbly urge anyone teaching pupils about prime numbers to include the phrase "greater than one" in their definition? The MacMillan Encyclopedia definition seems neat and precise to me.

An integer greater than one that has no integral factors other than itself and one.

I am also grateful from a different standpoint. I now know that at least two people look at the puzzles.

Logically which same number is missing from each of the following sequences?

1 - 17 - 3 - 13 - 5 - 11 - 7 - 7 - 9 - ?

1 - 1 - 2 - 3 - ? - 8 - 13 - 21 - 34

ACORN ARTJONES

ROY & BARBARA C. PRIEST

298 Abbeydale Road

B.A. (Hons) Fine Art

Sheffield S7 1FL

Telephone: (0114) 255 5348

e-mail: info@acornantique.co.uk



SECOND EXHIBITION.

Brian Edwards has been persuaded to continue his contributions towards the Totley Independent despite his earlier decision to concentrate more on the area around his home in Great Longstone. His last talk at Totley Library was a sell-out and the Exhibition of his drawings was limited by the space available. After a number of requests he will have an exhibition of further pen and ink originals for sale at Totley Library commencing 11 a.m. Monday, 11th November until 12.30 p.m. Saturday, 16th November. (Closed Thursday). He will also give an illustrated talk on "The History of Totley - an Update" at 7.30 p.m. on Monday, 11th November. Tickets from Totley Library 0114 2363067. Brian has written and illustrated 9 books and signed copies of some of them will be available at the Library.



WOMEN'S ROYAL VOLUNTARY SERVICE

WRVS volunteers play a key role in their local communities. Our volunteers were at the scene of the recent Selby train disaster, 18 hours a day, for eight consecutive days; who else would have responded in this way to support the emergency services? Without our volunteers families devastated by the recent floods would not have received the same reassurance and support given to them at WRVS rest centres up and down the country. Without WRVS volunteers, thousands of vulnerable and elderly people would have missed out on the social contact and care given by our Meals on Wheels teams. Without WRVS volunteers vulnerable children and families would have been deprived of the many community projects run in their locality by WRVS. WRVS has been providing services to local communities across England, Scotland and Wales for 63 years and has over 100,000 active volunteers.

Time on your hands?

WRVS are expanding its services in the Royal Hallamshire Hospital, Northern General Hospital, Weston Park Hospital and Sheffield Children's Hospital, and are now recruiting volunteers to assist in the day to day running of its tea bars, shops, trolley services.

As WRVS relies on a volunteer workforce, we currently have vacancies for retail/catering assistants, cashiers, a rota organiser, recruitment officer, and stock assistant, to help us in the running of these units.

All training will be provided, as you will be required to serve customers and handle cash. All goods sold will be pre-packed so catering experience is not essential.

Volunteer Shifts

8am - 8pm Monday to Friday.

10am-4pm Weekends

Travel expenses will be paid

Free Hot Drink

Uniforms, Support and Training provided

All shifts are for 4 hours.

Ladies, Gents and Couples are most welcome, aged between 14 to 75.

To find out more contact us on

0845 601 4670 (local rate number)

So, go on why not Volunteer for a change?

TRANSPORT 17



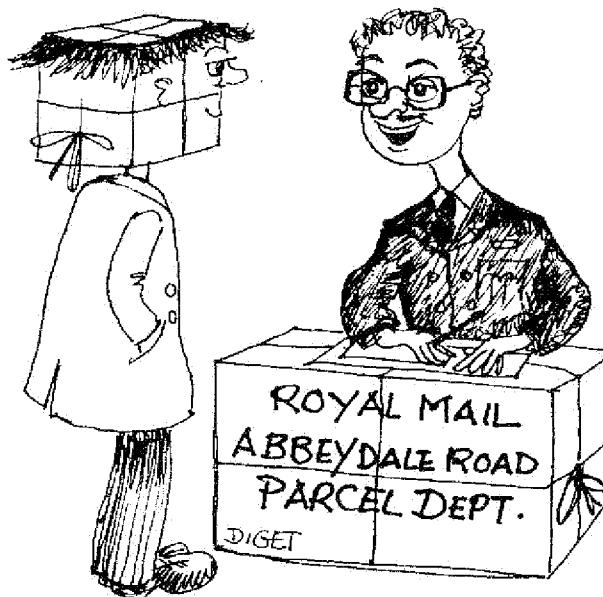
Many thanks to the Totley Residents Association and Totley Show for the Donation of £200; we are very grateful indeed. On Saturday, 30th November there will be a "Coffee and Mince pie" fundraiser. This will be at our office, 172 Baslow Road from 10 a.m. till noon. A donation of 50p will get you in! Christmas items, gifts and good bric-a-brac will be on sale. We will also be selling tickets for the Rotary Club Christmas draw. For every £1 book of tickets we sell we receive 80p. Our T17ers will have been offering these for sale to supporters for a few weeks even before this coffee morning. Please buy! The draw takes place on the 10th December.

Less than two dozen people were at the General meeting on 14th October. Shareholders were told that we are on the path to buying a new bus by begging left right and centre for money.

We are badly in need of volunteers to drive and escort.

There are many consultations going on re Community Transport in general which we need to be on top of. There is no way we will lose our service without a big fight. Hopefully, however, our agreement with the Passenger Transport Executive will be renewed.

Best wishes Margaret Barlow



"DO YOU HAVE ANY OTHER QUALIFICATIONS FOR WISHING TO JOIN THE PARCEL DEPT?"

PIGEON IN THE PARK

Beryl mooched her way to the Park, and took her daily path to the comfortable form from which she could look down towards the lake. She was glum. Things were not going well for her - at least her mind did not at present see much to rejoice about. She was fed up with her job, but did not feel like accepting the new work her boss was offering her, even though he seemed keen for her to take it and it gave more money. The friend with whom she had been living had just got married and moved out, and she couldn't think of anyone she wanted to invite to share the flat. Her mother had asked her to go over to be with them when her brother was at home next weekend, but she couldn't be bothered to make the journey of bus, train and bus. She wished something exciting could happen to give her a new life.

She paused and then sat down on the bench to start her lunch of cheese and lettuce sandwiches and digestive biscuits. Glancing up she noticed a pigeon a little way in front of her. It took no notice of her presence, but carried on strutting about on its sturdy legs, eyes unblinking as it picked up pieces of bread left by former lunchers. It flew a short distance away and then came back for more bread. Strut-strut, peck-peck.

With nothing else particularly pleasurable to think about, Beryl watched the greyish looking bird as it moved before her. Now here was a creature that knew what it wanted to do and was doing it with steady intention. It had no hesitations as to which bit of bread to go to next, seemed in no way miserable or unsure, but just got on with living in its own way, not agitating for anything it could not have. Just doing what a pigeon was meant to do: how simple and straightforward it seemed. In fact, the world was full of an enormous range of creatures who, when she thought of it, all seemed happy to get on with living in their own particular way, be they tigers, robins, dolphins or caterpillars. Or, at least, they gave no evidence of being unhappy, unless someone stole their food or tried to stop them living.

It was much more complicated being a human being. Things were rarely so positive and direct as strutting about picking up pieces of bread. But we had a far greater range of things we could do, so it should be more pleasurable and interesting for us. She would be bored stiff as a pigeon, even though they could easily fly away if they felt like it. But, after a flight, they would just end up sitting around, making tedious non-stop cooing sounds, preening their feathers, dropping off to sleep perhaps, and then going to find some more bits of something to satisfy their limited diet.

But, unlike her, the pigeon did not seem to be moping. He had even winked one eye at her, or so it had seemed earlier on. She paused in her eating, with her mouth half full, as she decided that if that bird could apparently be happy with the life it had been given, then perhaps she could be - with so many more experiences available to get involved with if she only stirred herself up a bit.

She looked at her digestive biscuit, gently broke it up and threw the crumbs carefully in the direction of the bird. In turning towards her offering, his movement was caught in a shaft of sunlight. Miraculously this was no grey bird, but a scintillating rainbow of colour like shot silk. She smiled and walked away: there was no end to life's hidden possibilities.



"YOU WERE SO DAMP LAST NIGHT I'VE HAD TO SEW A DAMP COURSE INTO YOUR TROUSERS!"

PUZZLE CORNER

Solution to A Missing Number (from Page 8)

Missing number is 5.

In the first sequence alternate numbers increase by 2, interlaced with decreasing prime numbers.

In the second sequence after the first two, each number is the sum of the previous two.

Don Ashford

ELECTRICAL REPAIRS

City & Guilds
Qualified

EST. 1969

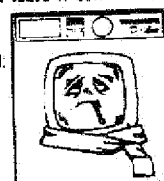
City & Guilds
Qualified

HOOVER, HOTPOINT, SERVIS etc:

- FRIDGE / FREEZERS & COOKERS
- AUTOMATICS & TWIN-TUBS
- TUMBLE-DRYERS
- DIY SPARES

Don't leave it until it's too late!

Phone Sheffield:
274 8751
55 Colnar Rd
Woodseats
Sheffield
S8 8QA



Engineer Direct:
**07885
721123**
(Mr D. Ewood)

FREE ESTIMATES!

NO CALL-OUT CHARGE!

12 MONTH GUARANTEE!

WOODSEATS DOMESTIC APPLIANCE REPAIRS

Spotlight on

Geoff 'Diget' Tomlinson



How long have you lived or worked in Totley?

I was born in Hopedale, Labrador. My father was a trader in the Hudson Bay Co.; he was also a Totley man and the youngest man to get the Polar Medal, going to the South Pole with Sir Douglas Mawson.

My mother, a Sheffield Nurse, I was brought to Totley by my mother nursing an appendix. She went straight into hospital

leaving me with my grandparents on Totley Brook Road. It appears I was a handful refusing to speak English. I still speak Eskimo not that it does me any good.

I was packed off to the Misses Crossland's School still in my sealskin coat, trousers and boots.

I had nothing else to wear. I was seated next to the late Pat Sneath. Now, I can tell you that seal skin pongs beyond belief and Pat noticed this exclaiming "Good heavens doesn't he smell!"

I never let her forget it over the years. We always had a giggle about it.

What do you most like about this area?

Friends here, it's clean and that wonderful perfume off the heather.

What would you change if you could?

I would put Baslow Road underground! In a tunnel.

What do consider to have been you greatest achievement so far?

Reaching the age of 77 years. I still think like an old Eskimo! - (and I did say think!)

Do you have a goal or ambition?

No I have always loathed football.

Have you any regrets or disappointments?

Legions of them - marching five abreast into the distance.

What makes you angry?

Bad manners! I did my humorous talks and routine 1,200 times, I hope I never gave offence, so many venues all in this area, I nearly knew my lines.

What gives you hope and encouragement?

I think of St. George.

If you ruled the world...

I would have every cartoon and idea I have drawn published.

What is your treasured possession?

I think my memories. I was in the royal Navy during the war, serving on two Destroyers. We did a Russian run, came home and were sent out through the Med' into the British Pacific fleet. We were in the Pacific when they dropped the bomb.

We took an ambulance ship into Tokyo to bring our boys out who had been prisoners of the Japanese. I have never knowingly bought anything Japanese since that day.

Demobbed I eventually joined Thos.W.Ward and stayed with them twenty years. They were a marvellous family firm. I was a sales rep' and had some success. As long as one brought in the business they gave a free hand.

I appeared in theatre, T.V., films, radio. During this time my late wife Kathleen and I appeared in episode two of

'Coronation Street'. Even our little cat was offered a job in 'the Street'. But she turned it down; she didn't think the show would last!

I made a living appearing on T.V. for many years.

I notice they now also have a Greyhound on the 'Street', and it seems to me it's the only character that doesn't lead a dogs life!

Walking along the main corridor in Thos.W.Wards head office I met a top director who greeted me with "Hello, Geoff, saw you in Coronation Street last night, by the way is it true about Elsie Tanner?" "Yes says I - it is!" (What a star she was.) So many of those originals were perfect casting.

Which historical event would you like to have witnessed?

The Tudor Period.

What famous person would you like to meet?

H.M. the Queen, just for a chat. I did meet Prince Phillip. I even played him in a film. Apparently I am exactly his size, shape, hair colour and on standing by him I found it to be so. Thos.W.Ward were ship breakers for scrap, I told him that, as a firm we once had a bigger navy than the RN. He was intrigued.

Who had the most influence on your life?

Bernard F.Sanderson, for whom I worked as an office boy. He made me copy his beautiful handwriting for the first week in his office, before I was allowed to lick a stamp.

I won a 4-year scholarship to the Arts School, which I had to leave to help meet the household bills.

Dr. L du Garde Peach and his village players came next. I was in his company for 20 years playing 18 weeks a year, twice on Saturday. Such a variety of characters too. Parts specially written for me by him, drawing audiences from all over the country, a unique man, and a superb theatrical experience.

Packed to the doors every nigh, sold out! People 30 years after stop me and say, "Weren't you Henry VIII at Great Hucklow"

What was your childhood like?

The sun always used to shine, but I hated football.

How do you spend your spare time?

Cartooning. D.G.T. are my initials, which is why I got "DIGET"

I draw 'Chairman Miow' for 'Our Cats' magazine and have done so every week for 14 years.

He's a big tomcat who sits in his chair, never gets out of it, and has profound thoughts but never acts upon them. He's a delight to think up and draw.

I draw 'Bradway Belle' for the 'Bradway Bugle'. She never gets out of her car; she too is a joy. I've been drawing for the 'Totley Independent', which all have some Totley flavour, for years, i.e. 1983 I fact. The work has been very pleasurable.

I had my first cartoon published at the age of 13 in 'Lilliput' magazine and not another for 20 years.

What was your best holiday?

On a cruise sailing to Norway. We parked the car on the jetty in Newcastle. Imagine doing that today! And 10 days later it was waiting. Cost of the holiday - £23.00.

Where in the world would you most like to visit?

Cornwall to taste again a genuine 'pasty' or 'oggie' as the Cornish call them. (Meat and Potato Pie)

What is your favourite Book and music?

All works by Dickens. "Tarzan of the Apes" by Edgar Rice Burroughs.

Film "Oh what a lovely war" depicting the horror of war.

What skills do you wish you had?

I wish I could dance really well like Fred - er Bottle, Fred Bottle.

If you could change your career what would you choose?

Perhaps be a gardener or a "Hollywood Movie Star!"

HOW TIMES HAVE CHANGED

(OR TO QUOTE THE JAZZ CLASSIC NUMBER BY MERCER ELLINGTON "THINGS AIN'T WHAT THEY USED TO BE")

During the late 1936's my rambling friends and I had really got the bug for exploring the grand Derbyshire countryside. Every weekend seemed to be a magical adventure.

Around the year 1938 we had a yen for the limestone dales. A typical would be train to Grindleford and across the Black Harry Rake to Monsal and Millers dales.

Then our horizons stretched further a field to Lathkil, Bradford dales and beyond to Gratton and Longdale.

I recall one spring day we popped into the village shop at Over Haddon and the lady told us about the forthcoming sale of a detached small freehold stone built cottage situated just down the lane leading to the ford entrance to Lathkil Dale.

The asking price with vacant possession was £90. The mind boggles. On close inspection the cottage was adjacent to the quaint village Church, with a small plot of land and an outside primitive toilet. The cottage had a stone floor (2 rooms upstairs and 2 down). Water was laid on but no electricity. The upstairs floorboards were weak and the window frames also, but generally this was a sturdy old - fashioned building. What a grand location, we all thought, it would make a grand weekend retreat for a club headquarters.

Returning home, excited, I asked my parents if they would consider laying the money out and we could pay them back by instalments. My father had just bought his first car at this time, a 2 years old Ford Popular Saloon for £45. This vintage model was known as the workingman's car, the new price just £100. I always remember the registration letters were CSM 354. I used to call it "Company Sergeant Mayor".

Anyway my parents had a run out in the car and viewed the cottage and decided against our wishes and thought the property was not a good investment. It appears the cottage was later sold for £100. If only we could have gazed into a crystal ball to anticipate the mad inflation period of this modern age. A lesson learned the hard way.

Round about 12 years ago I was having a stroll down the lane leading to Lathkil Dale and noted the same cottage in all its splendour, all modernised with extended porches etc. the present lady owner was tending the lovely garden area. She told me they had paid around £25,000 for the property about 3 years previously and that the property had changed hands several times since I first saw this little bargain back in the good old days before inflation took over.

What would be the value today in the setting of our glorious Peak National Park.

John C. Barrows

St. JOHN'S CHURCH GUILD

Are holding their **CHARITY ANNUAL BARN DANCE** in St. John's Church Hall (Abbeydale Road South)

Saturday 9th November

7.30 p.m. to 11.00 p.m.

Tickets are £7.00 each to include a Pea & Pie & Fruit Salad Supper (vegetarian option available by request in advance). Dancing to "Caddam Wood Ceilidh Band". There will be a licensed bar and a Grand Raffle.

All profits to St. Luke's Hospice.

Admission by ticket only which can be obtained by ringing : Phyllis Glossop - 236 2597 or, Alan Fletcher - 01246413453

DO COME AND JOIN IN THE FUN

TOTLEY & DORE SUPPORT GROUP FOR THE VISUALLY IMPAIRED

2002 meetings are as follows: -

NOVEMBER THURSDAY 21ST.

**THE MEETINGS ARE AT 11 am. at
4, GROVE ROAD, TOTLEY**

**TOTLEY ALL SAINTS'
PARENT & TODDLER GROUP**
is holding a

CHRISTMAS FAIR

**on Saturday, 16th, November
in Totley All Saints Church Hall
from' 10 am. To 1pm.**

Toys, Books, Crafts, Cakes, Games and lots more

Special Guest - Father Christmas

Visit him in his Grotto and receive a gift

Admission 20p. Children free.

Lots of fun for all the family!!



Come and learn with us

Hebrew Praise Dancing

We meet fortnightly at

Totley Rise Methodist Church

Mondays, 8pm to 9.45pm

In the hall

Autumn Dates:

November 4th. & 18th.

December 9th.

You are very welcome to come and join us

Men and Women --No experience necessary just wear comfy shoes. Ring Sheila, 236 7457

Free!

(Please note these are the correct dates Ed. apologies for printing incorrect dates in the September issue.)

215th. Totley 1st. Scout Group

Scout Lottery

SEPTEMBER DRAW

1st.Prize No.74. Philips Ice Cream Mixer.

Mr. & Mrs.Smith, Haugh Lane.

2nd. Prize No. 24. £10 Voucher

Mr. Soulsby, Stonecroft Road.

OCTOBER DRAW

1st.Prize No.74. Theatre Tickets (by request).

Mrs.Walton, Stonecroft Road

2nd. Prize No. 24. £10 Voucher

Mrs. Swain, Baslow Road

Peter Casson

K.T.V. SERVICES LTD
skydigital

AERIALS AND SATELLITES

- All Areas - Anytime
- Fast - Efficient - Professional
- Channel 5 - Upgrades - Repairs
- Multi - Point - Satellites - Retuning
- Meter Aligned For Best Reception

**NO CALL OUT CHARGE
NOT VAT REGISTERED**

OFFICE & EVE 8am to 10pm
0114 258 5181
IMMEDIATE ATTENTION
07930 411337
621 Chesterfield Rd, Sheffield

E & L WILSON

Builders and Plumbers

Central Heating,
Domestic Plumbing,
Glazing, Double Glazing and Glass
Home Maintenance
uPVC and Wood Windows

Telephone:-
(0114) 236 8343

TOP KNOTS 'N' TAILS

MOBILE DOG TRIMMING

ALL BREEDS

Expert trimming in your
own home

Telephone Karen
0114 235 0823
Mobile **07932 477 855**

MILLTHORPE NURSERY

GROWERS OF QUALITY PLANTS
Shrubs, Conifers, Hedging, Alpines
Herbaceous, Grasses, Topiary

- Shrubs from £2.99
- 3ft Golden/Green Laylandii £2.49
- Green/Variiegated Privet £1.99

Open Seven Days a Week
Trade welcome

Millthorpe Lane, Holmesfield
Call ROBERT on 07876700071

10054 Holmesfield Rd

Glanmore

Bed and Breakfast

Totley Rise

*A warm welcome awaits your
visiting friends and family.*

Reasonable rates
Tel. **0114 235 1349**
Mobile **0798 907 0297**
E-mail. **Glanmore@tesco.net**

Treat yourself to better health

- Swiss/ Remedial Massage
- Indian Head Massage
- Full Range of Beauty Treatment.
- Nutritional & Fitness Advice

All at affordable rates by caring, mature
local Therapist.

Pamper packages and gift vouchers
available.

Corporate visits by appointment.
Many people have benefited from my
treatments.

Patricia Seda Bevan
0114 274 0477

Catherine Clarke
M.B.S.C.H. M.B.C.H.A. S.R.N.

Qualified Chiropodist

Westfield accepted
12 years experience
Home visits available
Daytime and evening appointments

192, Baslow Road
Totley
Sheffield
S17 4DS
Tel: **0114 236 4101**

BUSY BEE
D.I.Y. SUPPLIES

170 BASLOW ROAD, TOTLEY, SHEFFIELD S17 4DR.
Telephone **236 5798**

for
**A COMPREHENSIVE SELECTION OF
D.I.Y., DOMESTIC & GARDENING ITEMS**
including
Plywood, Timber, Paint, Hardware,
Bowls, Buckets, Mops, Tools, Locks,
Composts, Pots, Fertilizers, etc. etc.

KEY CUTTING SERVICE
If we do not have your requirements
in stock we will do our utmost to
obtain it quickly for you

Tel/Fax.
(0114) 255 4689
Mobile
0831 802539

TRISTAN SWAIN
LANDSCAPING AND MAINTENANCE

72 Nettleham Road
Sheffield S9 8SY

E. J. WRIGHT
JOINERY SERVICES

All joinery work undertaken,
uPVC Windows and doors fitted

Tel: **0114-255-1099**
Mobile: **07885-109-502**

M. Scriven
(FRUITERAMA)

MARTIN SCRIVEN
HIGH CLASS FRUIT
& VEGETABLES

37, Baslow road
Tel. **236 7116**
Orders Delivered

LADIES FASHIONS

SKIRTS, DRESSES,
JUMPERS, T-SHIRTS,
UNDERWEAR etc
ALSO
CHILDRENS WEAR
HABERDASHERY,
WOOL

Dry Cleaning, Shoe Repair
& Laundry Service

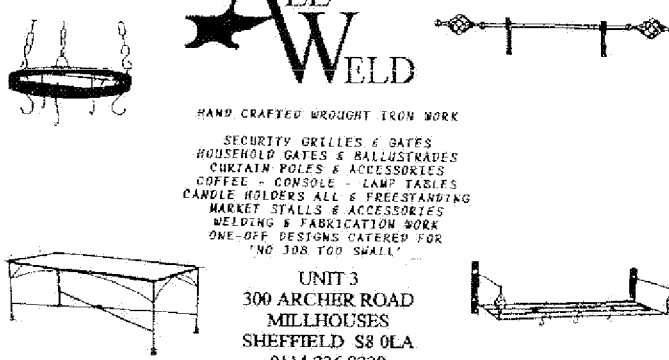
ROSIES
164 BASLOW ROAD, TOTLEY.
TEL: **2621060**

ALL WELD

HAND CRAFTED WROUGHT IRON WORK

SECURITY GRILLES & GATES
HOUSEHOLD GATES & RAILLUSTRADES
CURTAIN POLES & ACCESSORIES
COFFEE - CONSOLE - LAMP TABLES
CANDLE HOLDERS ALL & FREESTANDING
MARKET STALLS & ACCESSORIES
WELDING & FABRICATION WORK
ONE-OFF DESIGNS CATERED FOR
'NO JOB TOO SMALL'

UNIT 3
300 ARCHER ROAD
MILLHOUSES
SHEFFIELD S8 0LA
0114 236 8239



R.S. Heating & Building Co. EST 1971

Heating Division
Experienced, Qualified Installers of all types of central heating.
10 year guarantee on most new gas systems.
Complete after care service

Building Division
Joinery, Electrics, Tiling, Decorating Specialists
in wall tie replacement
and house Renovations

0114 236 4421
HALL LANE BARN, TOTLEY HALL LANE, SHEFFIELD S17 4AA



Slimming...unleash the passion

Your nearest class
Dore Old School, Savage Lane, Dore
(Sheffield) Tuesdays at 17:30
Bradway Annexe, opposite top of
Twentywell Lane, Bradway Sheffield
on Thursdays at 17:00 & 19:00

Expose the real you - slim, vibrant,
confident. At Slimming World we
take your fun seriously.

Contact Consultant
Alison on 01246 410145 for further details




The Cricket Inn

Penny Lane, Totley

The Cricket Inn, Penny Lane, Sheffield, S17 3AZ
OPEN Mon. to Fri 11 a.m. to 3 p.m. & 5 p.m. to 11 p.m.
Sat 11 a.m. to 11 p.m. Sun. 12 noon to 10.30 p.m.

Food served :- Mon to Sat Lunch 12 noon to 2 p.m.
Mon to Sat Evening 6 p.m. to 9 p.m.
Fri. & Sat Evening 6 p.m. to 9.30 p.m.
Sun. 12 noon to 5.30 p.m.
Tel. 0114 236 5256



Mark & Sally Fletcher invite you to

The Grouse Inn
Longshaw
SHEFFIELD S11 7TZ

Open for Meals Every Lunchtime
12 to 2-30 pm.
Evenings Wednesday to Sunday
7-00 pm. 9-30 pm.

Phone 01433 630423

Dore 2000
Executive Car Service

- Airports & Ports
- Business
- Coastal
- Concerts
- Hospitality
- Entertaining
- Sports Events

Air Conditioned vehicles
for 1 - 6 passengers
Telephone available
for reservations or estimates
Telephone/Fax
Gordon MacQueen
0114 235 3434
Mobile 07711 763 973

FUNCTION ROOM FOR HIRE
for DAYTIME & EVENING PARTIES

WITH
KITCHEN and BAR FACILITIES

IDEAL FOR ALL AGE GROUPS

HEATHERFIELD CLUB
193, BASLOW ROAD, TOTLEY

FOR FULL DETAILS TELEPHONE
EVENINGS ONLY From 8.30 p.m.
(0114) 262 0187

Creating opportunities with disabled people Registered Charity No. 218186

LEONARD CHESHIRE

Leonard Cheshire Services in Offers choice & opportunity to people with disabilities.
A Specialist Unit for the Younger Disabled.
Residential & Respite Care - Single Rooms
Day resources - Aromatherapy -
Reflexology - Physiotherapy - Toning
Tables.

Activities include: - Arts & Crafts -
Computers - Cookery - Shopping
Expeditions - Theatre Outings - Church.
Further details can be obtained from -
The Service Manager, Mickley Hall,
Mickley Lane, Totley, Sheffield S17 4HE.
Tel. 0114 236 9952
Fax: 0114 262 0234

The Care at Home Service supports disabled people who wish to remain in their own homes.
We provide flexible care packages from 1 hour to 24 hours meeting individual needs.
The service operates throughout Sheffield.

Our service includes: - help with getting up and going to bed, dressing, washing, bathing, shopping, cooking, light household duties.

Further details from: -
The Care at Home Manager
Tel. 0114 235 1400
Fax 0114 235 1499

Bradway Music

MUSIC LESSONS

For enjoyment or examinations
from beginner to advanced.



*Piano, Electronic keyboard,
Theory, Harmony, Aural,*

Geoff Henthorn GNSM

For prospectus or further details
please phone: 235 2575

Mr Robert Colclough
MSSCh, MBChA, BSc (Hons).

CHIROPODIST
now practicing at

Faye Catton Health & Beauty
Totley Rise, S17

Tel no: (0114) 236 0997
call now for an appointment.
or call (0114) 235 0256
for an immediate home visit.

**TOTLEY
PRIVATE HIRE**

*PROFESSIONAL CAR SERVICE
FOR
AIRPORTS & LONG DISTANCE
TRAVEL etc.*

Tel: 0114 - 2361547
Mobile: 07974-355528

DORE OPTICIANS
PETER BLAND BSc(Hons) MCOptom



FULL SIGHT TESTS/EYE EXAMINATIONS · NHS OR PRIVATE
FREE GLASSES FOR CHILDREN AND NHS BENEFICIARIES
ALL TYPES OF CONTACT LENSES AND SOLUTIONS
CHILDREN AND FAMILIES ARE WELCOME
FRIENDLY HELPFUL SERVICE · FREE CONTACT LENS TRIAL
GLASSES REPAIRED · SPORT GLASSES · OPEN 6 DAYS

A Personal Service on your doorstep
Telephone: 236 3200
25 Townhead Road, Sheffield S17 3GD

STUART FORDHAM F.A.D.O.
OPTICIAN

The fourth generation
- devoted to family eyecare since 1871.
N.H.S. and Private examinations
by a qualified optometrist.

Wide range of frames from budget to designer
at prices to suit every pocket.

Advice gladly given on frames, lenses and
low visual aids for the partially sighted.

Emergency repairs carried out on the premises.

63, Baslow Road, Totley Rise
Tel. 236 4485 (24 hr answering line)

**CHARISMA
BLINDS**



For
Windows
With Style

Sheffield Factory Showroom
106 PROSPECT ROAD
HEELEY, SHEFFIELD

Sheffield (0114) 258 5496
Rotherham (01709) 512113

Anton Rich + Associates
Architects

Now is the time to plan your
home extension, or even a new
home - we specialise in both.

Call us for a chat on
Sheffield 250 9200

A Member of
The Association for Environment-Conscious Building

FOR SIX GENERATIONS

THE LEADING FUNERAL DIRECTORS

John Fleath & Sons
PROMPT and COMPREHENSIVE SERVICE
AT ALL TIMES
☎ 2 722222

LIMOUSINES FOR SPECIAL OCCASIONS

Fully Qualified and
Experienced
Therapists,
Specialising in:

- acupuncture
- aromatherapy
- chiropractic
- colon hydrotherapy
- herbal shiatsu
- herbal reflexology
- hypnotherapy
- lymphatic drainage
- meditation
- muscle toning
- nutrition therapy
- psychotherapy
- physiotherapy
- reflexology
- reiki healing
- shiatsu
- therapeutic massage
- yoga

GREENWAYS
Natural Health Centre
Naturally We Care for Your Health

Specialist Health Food Shop:
vitamins
natural beauty products
skin care remedies
homeopathic remedies
herbal products
gifts • books • CDs

Mail Order Catalogue
Available - Please Call
for Details

Fully Appointed
Rooms set in
relaxed
surroundings

Full Disabled Facilities
Large Car Park

Full Information Packs
available on all
therapies.

0114 236 0890
Fax 0114 236 2142
www.greenwaysnaturalhealthcare.co.uk

Membership Facilities
Now Available!

180 Baslow Road, Totley, Sheffield S17 4DS

TOTLEY & DISTRICT DIARY

MONDAYS COFFEE MORNING, All Saints' Church Hall, 10am. To noon
TUESDAYS COFFEE MORNING, Totley Rise Methodist Church Hall, 10am. To noon.
CRAFT GROUP, Totley Library, 2pm.
WEDNESDAYS COFFEE in the LIBRARY, 10am. to 11.30am.
MODERN SEQUENCE DANCING, All Saints Church Hall 8pm. to 10pm.
TODDLER GROUP, 10-00 a.m. to 11-30 a.m., All Saints' Church Hall. Details tel. 236 6789 or 236 3603
THURSDAYS PUSHCHAIR CLUB, Totley Rise Methodist Church Hall, 1.30pm. to 3pm. Tel. 2363157 for further details.
SATURDAYS MODERN SEQUENCE DANCING, All Saints Church Hall 2nd. And 4th. Saturdays 7.30pm. to 10pm.

NOVEMBER 2002

SAT. 2nd, ANTIQUE FAIR, St. John's Church Hall, 10 a.m. to 4-30 p.m.
FRI. 8th, BONFIRE & FIREWORK DISPLAY, Totley Primary School, 6-30 pm.
 For 7pm. Start Full details inside.
SAT. 9th, COFFEE MORNING, Totley Rise Methodist Church, 10am. to noon. On
 Behalf of National Childrens Homes. Details inside.
SAT. 9th, BARN DANCE, St. John's Church Hall, 7-30 pm. to 11-00pm. Full details
 inside.
SAT. 9th, SATURDAY NIGHT LIVE, Phil Lawrence, Heatherfield Club, Baslow
 Rd., 8-30 pm. Non Members Welcome Entrance £1.50.
SAT. 12th, SHEFFIELD BACH SOCIETY CONCERT, Sheffield Cathedral 7-30
 p.m. Full details inside.
TUES. 12th, WOMEN'S FELLOWSHIP, "A Visit to South America" Miss. J.
 Hodgkinson, 2-30 p.m. Totley Rise Methodist Church.
FRI. 15th, QUIZ NIGHT, King Egberts School, 7-30 pm. Full details inside.
SAT. 16th, CHRISTMAS FAIR, Totley All Saints' Church Hall, 10am. to 1pm.
 Totley All Saints' Parent & Toddler Group, Full details inside.
SAT. 16th, CHRISTMAS FAIR, Dore & Totley U.R.C. Church Hall, Cakes,
 glass china, books, tapes, records, CD's, Bric-a-brac, toys & refreshments, 10am. to 12
 noon. Admission free.
SAT. 16th, SHEFFIELD BACH SOCIETY, Sheffield Cathedral, 7-30pm. Full details
 inside.
TUES. 19th, TOTLEY TOWNSWOMEN'S GUILD, "30YEARS BEHIND THE
 SCENES OF COMMERCIAL RADIO", Jo Harrison, Totley Rise Methodist Church
 Hall, 10.00 am
WED. 20th, to **SAT. 23rd**, "A Class of Their Own" TOADS, St. John's Church Hall,
 Abbeydale, 7-30 pm. Details inside.
SAT. 23rd, TABLE TOP SALE, King Egberts School, 10 am to noon. Details inside.
TUES. 26th, WOMEN'S FELLOWSHIP, "Cruising with Mickey" Rev. C.Kirk,
 2-30 p.m. Totley Rise Methodist Church.
SAT. 28th, SATURDAY NIGHT LIVE, Gem Harrison, Heatherfield Club, Baslow
 Rd., 8-30 pm. Non Members Welcome Entrance £1.50.
SAT. 30th, CHRISTMAS FAIR, St. John's Abbeydale, Church Hall, 2pm.
SAT. 30th, TRANSPORT 17, COFFEE & MINCE PIE Open day at the Office Baslow
 road, 10am. till noon Full details inside.

THE INDEPENDENT FOR DECEMBER/JANUARY

The next issue of the Totley Independent will be available
 from the usual distribution points on

SATURDAY 30th, NOVEMBER

COPY DATE for this issue will be

SATURDAY 16th, NOVEMBER

Editors Les & Dorothy Firth, 6, Milldale Rd. &

Tel. No. 236 4190 'E' mail firths@fish.co.uk

And Ian Clarke Tel. No. 235 2526

Distribution & Advertising, John Perkinson, 2, Main Avenue,
Tel. No. 236 1601.

Items for publication may be left or sent to 6, Milldale Road,
 2, Main Av., Totley Library or V.Martins Abbeydale Rd.

PRINTED by STARPRINT

Starprint

601 Abbeydale Road, Sheffield S7. Fax: 0114 258 8599

DESIGN & PRINTING of

- LETTERHEADS • BUSINESS CARDS •
- BOOKLETS & PADS •
- INVOICES • LEAFLETS •
- CARBONLESS SETS • BROCHURES •
- RAFFLE TICKETS •
- WEDDING STATIONERY •
- ENVELOPES & POSTCARDS •

**SPECIALISTS IN THERMOGRAPHY
 FOIL BLOCKING AND ENCAPSULATION**

0114 258 0707

For a Quick Quotation

**B. K. JEAVONS
 PAINTER & DECORATOR**



**Interior
 Exterior
 Decorating
 No job too
 small.**

**86, WOLLATON ROAD
 BRADWAY
 SHEFFIELD, S17 4LG
 Telephone 2350821**

JOHN D TURNER CONSTRUCTION

45, LONGFORD ROAD, BRADWAY, SHEFFIELD S17 17
**BUILDING & PROPERTY REPAIRS, JOINERY
 ELECTRICAL & PLUMBING EXTENSIONS &
 ALTERATIONS.**

ESTIMATES FREE

PHONE SHEFFIELD 236 7594 EVENINGS.

JOHN D TURNER (CONTRACTING) Ltd.

We welcome letters about local affairs and will publish as many as possible. However the views expressed are not necessarily those of Editor, editorial staff or the Totley Residents Association and must not be imputed to them.