

TOTLEY INDEPENDENT

PUBLISHED CONTINUOUSLY BY THE TOTLEY RESIDENTS ASSOCIATION SINCE 1977
FEBRUARY 2011 No. 340

20p.



15 Baslow Road

This photograph recently appeared on the Sheffield & District Family History Society's 'message board'. We think it was taken 100 years ago when the Newsagent and Tobacconist business was run by Ethelbert Theaker – his name can be seen over the door. By the 1930's the business had expanded into number 17 and owned by Tom Bainbridge. John Bonner took over the business in the 1950's from Richard Topham, before it became Swifts in the 1970's and expanding into number 19. Our thanks to John Schofield who posted the photo on the message board.

Friends of Green Oak Park

Work in the park has not been possible because of the weather, but we did manage to plant the wild daffodils and blue bells before the snow arrived.

You may remember we submitted a bid to the Climate Change fund 2010/11 for eight new trees and four more fruit trees. Unfortunately applications for the available funds were over-subscribed and along with other groups our bid was not successful.

Tammy Barrass, the Manager of the South West Community Assembly suggested we put in an application to the "You Choose Pot". After spending two days preparing our display, we, along with 14 other groups, turned up at The Circle, Rockingham Lane on a Saturday afternoon to showcase our projects.

The idea of the event was for those present and their supporters to vote for the five projects they feel should receive the available funds.

All the groups present felt it would be best if we shared the funds, so everyone should be successful. We should be awarded a total of £1,311 for the new trees in the park. The money can only be spent on the trees.

The event gave the opportunity for groups with similar aims to meet each other and compare notes.

It also showed the commitment of the many volunteers working for local communities in the South West area.

TOTLEY RESIDENTS ASSOCIATION – Special General Meeting – Totley Library - Monday 21st February 7.30pm

We have already contacted the Tree Officer who works with us in Green Oak Park to arrange planting times for the trees. As in the past, we hope the schools will help with the planting.
Cllr Colin Ross has succeeded in persuading the Community Assembly to grant us £2,450 from the contingency budget towards re-tarmacing the children's playground. It is proposed the money is to be matched from our funds to make a total of £4,900.
Avril Critchley
Chair TRA

Totley Residents Association – What is Happening?

You may well ask! The committee has not met to discuss the stated objectives of the TRA since September 20th. It is not functioning due to a complete breakdown in communications within the committee, resulting in no meetings being held, as a quorate group could not be formed. Several resignations have occurred.

A Special General Meeting (SGM) was requested by more than 10 members of the TRA, back in November, to inform Totley residents of the current situation and pave a way forward. The TRA SGM will now be held as published on the front cover of the

Independent.

Roger Hart

Ward Forum

The Forum scheduled for 30th November 2010 at Bradway Primary School unfortunately had to be cancelled due to the bad weather. The debate on progress to date and the need for any changes that might be necessary will instead form part of the agenda for the next meeting on Wednesday 9th March in Totley Library at 7.30pm.

**Bradway Action Group
Dore Village Society
Totley Residents Association**

HANDEL'S MESSIAH

Sheffield Bach Choir

MONDAY 7 MARCH 2011

at Sheffield Cathedral, Church Street, S1 1AA

7.00 pm

Tickets £12-15; Students £6 from 0114 266 8257; Accompanied under 16s are admitted free of charge - boxoffice@sheffieldbachchoir.org.uk

On-line booking from the Bach Choir Website: www.sheffieldbachchoir.org.uk

Sheffield Bach Choir presents its annual complete performance of Handel's Messiah – postponed from December owing to the appalling weather conditions prevailing at the beginning of that month. The re-arranged concert takes place in Sheffield's historic Anglican Cathedral, accompanied by Sally Robinson and her acclaimed National Festival Orchestra. Vocal soloists are Jenny Leadbeater, Lucy Appleyard, Paul Dutton and Tom Hunt. The performance will be, quite literally, "from cover to cover" and is not to be missed! Dr Simon Lindley is on the rostrum and the keyboard accompanist is Alan Horsey, for many years organist of Bradford Cathedral.

A Fitter 2011

The New Year brings new goals and fresh motivation. After an indulgent Christmas and New Year the idea of bringing change to your lifestyle in early January is, let's face it, quite easy but achieving your goals is a different story.

It is also the ideal time of year to maximise your new lease of enthusiasm to bring these new habits into your everyday life with ease. This does not mean setting out-of-reach goals that will only end in disappointment and a feeling of failure! There are some simple steps to help you stay motivated and move you closer to health and happiness in 2011.

Step one – Make your goals simple and achievable

From personal experience I find those that aim too high too quickly tend to get overwhelmed and end up frustrated. There's nothing more motivating than achieving something. Plan your targets in smaller stages and only focus on each stage at a time.

Step two – keep a close eye on what you're achieving

By recording your progress your results become real. When working with clients it never ceases to surprise me how many of my clients undervalue their day to day improvements. Results do not happen overnight and it can seem a slow process. I typically track my clients' progress the first week of every month and over a six month period it is amazing to see how far they have come!

Step three – Goals must mean something to you

If you have a goal but not the deep down desire to achieve it, you won't! When it comes to making the right decisions to stay true to your goal, you will not make the right one if it does not mean enough to you. Choose your goals carefully.

Step four – Keep steady and calm

By getting stressed and uptight you're creating a situation that will either make you miserable or cause you to disregard your commitments. No one is perfect so if you have a bad day don't worry. Pick yourself up and get back on it the next day. Health and long term fat loss is a journey, not a destination!

Step five – ENJOY the process!

The more you enjoy the experience the better the results you will achieve. Get passionate about health and you are much more likely to stick to your new habits. Sure, eating sugary fatty foods taste great but only for the short term. When you start eating right, start moving more, drink clean water and sleep right, you produce more of the hormone serotonin, also known as the happy hormone. This improves your mood, increases your energy and improves your total outlook on life and who doesn't want feel like that?

Making changes that last can be easy just stay true to yourself, your goals and your commitments. Take time with your progression and believe that what you are doing will improve your balances in body and mind. Your future and success in life can be greatly improved with good health and happiness will be a by-product of that.

At Born2move we believe in making Personal training accessible for all ages of any level of fitness and we are truly passionate about helping all our clients reach their goals. If you would like to know any more information, please contact Nina on 07870 752729 or drop into Synergy on Baslow Road.

Nina Hartley

born2move Personal Trainer and Nutrition Coach

www.born2move.co.uk



Transport 17

I hope that 2011 is being good to you even though the start of it, full of snow and rain, was a bit disappointing. Never mind, things can only get better!! Many clubs had to postpone their Christmas festivities and will have them in the spring.

We start another year thinking of how to raise money to replace our oldest bus, as usual. Everyone is very supportive, but money is tight everywhere, as you all know. Every penny we are given is very important to us and much appreciated.

We are always in need of new drivers and escorts (passenger assistants!!). Are you interested? It is a very worthwhile thing to do and there is a great deal of satisfaction in getting people to and from their homes to their lunch and social clubs and outings. If you are interested, please call the office on 236 2962 or call at 172 Baslow Road, Totley. There is usually someone there till noon, although John, our treasurer, often doubles as an escort, when needed.

Best wishes.

Margaret Barlow

My wife, Margaret Barlow always remembers the birthdays of Transport 17 volunteers and staff in her articles. She did not mention that she was 3 score and 10 on 20th January.

Danny Barlow

Planning Application

We received notification on 15th January that the purchasers of number 17, Mickley Lane (the large detached house on the corner of Mickley Lane and Baslow Road), which has recently been sold, have applied to turn the building into a children's nursery for children aged 2 - 5 years old.

While we appreciate that the area is in some need of a children's nursery, we are gravely concerned about the impact the parking will have upon local residents.

As we already know, Mickley Lane is a very busy road, that is already congested with residents parking. Baslow Road is a fast and busy dual-carriageway, which seems a very unsafe place to put a children's nursery. The house is currently surrounded on all sides by double yellow lines, which surely means the parking situation will only worsen for locals (The plans submitted allow for 3 parking spaces within the site - surely not enough to accommodate even the staff?!).

The application notification appears to have been sent to only a few residents, who immediately surround the building, and I feel that the readers of the **Totley Independent** may be interested to see what is going on, as this will surely have an effect on the wider community.

Any objections have to be submitted to the council by 2nd February 2011. The application reference is 10/04150/CHU and can be inspected at Sheffield Council Planning, Howden House or their website here:- <http://tinyurl.com/5vef32q>

Name withheld

ALL SAINTS SCHOOL REUNION

At the Cross Scythes Hotel on Monday 21st March 7.30pm onwards, We look forward to seeing as many old pupils as possible who left around the late 1940s to mid 1950s



FORTHCOMING EVENTS

WEDNESDAY FEBRUARY 23RD, 7.30PM

TOTLEY LIBRARY

SHARING OUR RESEARCH

COME AND FIND OUT WHAT WE HAVE BEEN DOING

AND MAYBE START YOUR OWN RESEARCH

WEDNESDAY MARCH 23RD, 7.30PM

TOTLEY LIBRARY

"WHY THE T'ALLISTONE"

MARJORIE DUNN

**AN INSIGHT INTO WHAT INSPIRED THE SPEAKER TO
USE SHEFFIELD AS A BACKDROP FOR HER BOOKS.**

A PEEP INTO A VERY OLD SHEFFIELD

MEMBERS £1, NON MEMBERS £2

BACH'S ST MATTHEW PASSION

Sheffield Bach Choir

SATURDAY 16 APRIL 2011

at Sheffield Cathedral, Church Street, S1 1AA

6.30 pm - please note very early starting time

Tickets £12-15; Students £6 from 0114 266 8257;

Accompanied under 16s are admitted free of charge -
boxoffice@sheffieldbachchoir.org.uk

On-line booking from the Bach Choir Website:
www.sheffieldbachchoir.org.uk

2011 marks the centenary of the first performance of the English edition of Bach's monumental St Matthew Passion issued by Sir Edward Elgar and Sir Ivor Atkins. Sheffield Bach Society is proud to present the Elgar/Atkins version in full with soloists led by tenor Stephen Liley as Evangelist, baritone Philip Wilcox as Christ with aria soloists Jenny Leadbeater soprano, Kathryn Woodruff mezzo soprano, Stephen Newlove tenor and bass Thomas Asher who hails from Rotherham and is currently a postgraduate student at the Royal Northern College of Music in Manchester. The performance will include audience participation in the chorale hymns as in Bach's own time. This concert is Sheffield Bach Choir's annual John Dethick Memorial Concert.

Councillor Surgeries

Liberal Democrats:

2nd Monday in the month 6.00-7.00 p.m., Totley Library, Baslow Road and 2nd Saturday in the month from 10.30 a.m. to 12.00 noon, Dore Old School Hall, Savage Lane, Dore Contact details: telephone 235 2289 Email: keith.hill@sheffield.gov.uk,
colin.ross@sheffield.gov.uk or
mike.davis@sheffield.gov.uk

TRA Website:- www.totley.org.uk

Dore & Totley Station Park and Ride

Consultation on plans for the park and ride facility next to Dore and Totley railway station have started.

A 139-space car park is earmarked for the site of a former garden centre with a new entrance for vehicles to the car park and station and a new pedestrian crossing on Abbeydale Road. New landscaping is proposed.

It's an attempt to address long-standing complaints about surrounding roads being congested with parked cars.

South Yorkshire Passenger Transport Executive is seeking the public's views before drawing up the plans, which are to be submitted to the council in March.

With council approval work on site could begin in the summer, subject to funding being obtained.

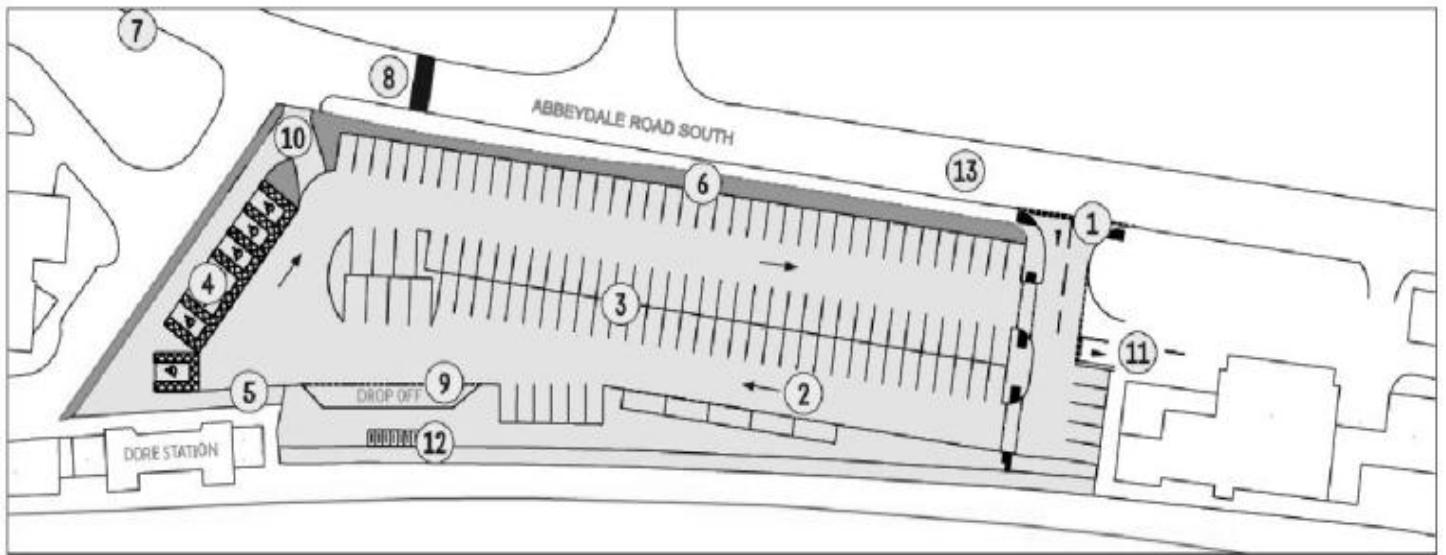
Leaflets with feedback forms are available from Totley Library, the Post Office in Dore Village, Dore Medical Centre, Dore Methodist Church, Dore Parish Church and other outlets.

Proposals go to City Council Planning Committee in March.

SPACE's immediate concern is that, though they welcome anything which will encourage rail travel and take parking off residential streets, the plans do propose removing the mature trees in front of the site. They would also like to see plans drawn up in a holistic way taking into account the station, its buildings etc.

Comments on the plans can be sent to gillian.palmer@sypte.co.uk or the forms in the library by 6th February.

THE OUTLINE PROPOSALS



A New Bridleway!

Some of you may remember that many moons ago we were approached by horse riders about linking up a couple of bridlevays to avoid them having to use the main road (Hathersage Road/A625). The section is between Stony Ridge car park (SK 277 806) to the Piper House entrance (SK 283 807). It's only a short section (615 metres) but nevertheless will make a big difference to horse riders and mountain bikers particularly. We have submitted a grant application to the Forestry Commission to help us upgrade the route from a footpath to a bridleway and as stipulated by Sheffield City Council, must surface it accordingly. Indications are that the application has been approved, which will mean that work will start in February or March 2011. Access to the woods and car parking will be affected but only for short periods of the day (it'll be made clear on site). It should only be a few days work. It'll look quite stark at first but new routes such as this will blend in within a few months. Thank you to all the horse and bike riders and the walkers who have helped us, and of course to the Forestry Commission and Sheffield City Council for funding the work.

If you'd like more information about the work planned or anything else about Blacka Moor then please get in touch with Annabelle Kennedy (Sheffield Wildlife Trust), 0114 263 4335 or visit us at www.wildsheffield.com

1. New entrance to the car park and railway station.
2. One way system around the car park.
3. 139 car parking spaces.
4. Blue badge parking facilities.
5. Pedestrian access point to the platform is maintained in current location.
6. Existing trees will be removed. A boundary fence/ treatment will be incorporated as part of the design.
7. Proposal for new location for the bus stop in order that a safe pedestrian crossing facility can be provided.
8. Pedestrian crossing facility to be provided.
9. Designated drop off/pick up point including rail replacement services.
10. Entrance to vehicles will be closed.
11. Access to adjacent properties.
12. Covered cycle shelter.
13. Restrictions on Abbeydale Road South prohibiting parking, waiting

Beginners Jogging club needs you!

The Endcliffe Park jogging club has been running since April and is steadily growing in numbers. The club attracts all types of standard of runners, from novice runners right through to experienced 5K and 10K runners. We have professional staff that are happy to provide helpful tips and share their knowledge about running. Our session is every Monday between 5.00pm and 6.00pm, meeting at the Hunters Bar roundabout entrance to Endcliffe Park.

This session is free, so please spread the word to family and friends.

For more information please contact James Milovanovic-Firth on 0114 205 3724

Totley Pharmacy Open Day

The open day at Totley Pharmacy for its robot proved to be a great success and sparked considerable interest with over a hundred patients visiting on the day.



Many others have also asked to see the robot in operation since. A follow up article also appeared in the Sheffield Star newspaper.

Among those attending on

the day were Councillor Keith Hill, and two Sheffield United footballers Leon Britton and Johnny Ertl.

The name the robot competition was won by Mr Joseph Abson of Baslow Road (the winning entry was "Barcode Bertie") who has been a loyal customer of the pharmacy ever since the current pharmacist took over the business



15 years ago. As well as congratulating Mr Abson, the pharmacist Taj would like to thank the many patients who have wished him success with this venture and all the patients who have supported him in his time in Totley. Anybody who wishes to see the robot is welcome to call in to the pharmacy at any time.
Tajinder Singh

CHARITY

I suppose Christmas time is perhaps the one time in the year when most people become more aware of charities and their work. I must confess the cynical side of me tends to whisper some sceptical thoughts in my ear. Charity Christmas cards are a case in point. I am sure that all charities are grateful for all contributions however small. On the other hand, how many retailers have half an eye on improving sales by selling such cards. I think the record this year was a card claiming 32 charities supported — all presumably from the small percentage offered on the cost of the card. Is some sales manager thinking that this will draw in more customers if they see their favourite charity in the list? I must confess I favour cards issued by the charity itself.

Another aspect of charities is that once your name is on their books they continually ask, indeed sometimes almost pester, asking for more. This goes for both national and more local groups. For more years than I care to remember my wife and I have been members of the National Trust and English Heritage. Because of our limited travel these days we rarely use our cards to claim free entry to properties. However all members regularly get postal communications asking for additional contributions.

Another modern scourge is the plastic sack delivered through every letter box, sometimes several different ones in a week. With the best will in the world there has to be a limit to what anyone can find to fill them. I wonder how many go straight in the refuse bin to contribute to land fill.

Another innovation of recent years is for tax payers to boost their contributions via the Gift Aid scheme. I have to confess that, when asked, I always meekly agree. On the face of it, it seems good that the charity can claim an extra 28p from the "tax man" for each £1 contributed. Then my conscience starts the niggling thoughts. If I take a group of family or friends to a house like Chatsworth, does my Gift Aid contribution help the resident owners to live there in a lifestyle we cannot even dream of doing. As the government continually remind us - they have no money of their own, it all comes from taxes. Consequently all Gift Aid contributions must mean more tax collected. My Gift Aid agreement therefore increases the tax burden for all, and without me getting agreement from all tax payers without a referendum!

Don Ashford.

DORE ART GROUP

ART

EXHIBITION

Dore Old School

Friday 8th April 2011

2.0pm to 6.0pm

&

Saturday 9th April 2011

9.30am to 5.0pm

Refreshments available

Free admission



Brand new session for Adults within the South West!

Golf coaching by our PGA Pro golf coach. Come down to the Moorview Golf Centre in Bradway for a lesson on the Driving Range.

This coaching session starts on Monday 21 February and will carry on until 28 March.

If the taster sessions prove successful we will look to extend the sessions further. The cost will be approximately £3, which will include the Golf tuition, hire of 60 golf balls and hire of the required golf clubs. More golf balls are available at an extra cost. The session will run every Monday between 1.00pm - 2.00pm.

For more information please contact James Milovanovic-Firth on 0114 205 3724

ARCHIE HERBERT THOMAS

We are grateful to Jo Rundle (again!) for letting us have this autobiography by Archie Thomas who lived most of his adult life at 42 Queen Victoria Road. It was written in 1988 and is reproduced here largely unedited.

My paternal grandfather was the illegitimate (*not Archie's word!*) son of Lord Rodney, (6th baron) and Miss Gwyneth Thomas. His lordship was one of the great gamblers of that era

He was a most generous man and must have loved my grandfather very much as he gave him a public school education at Stow. My great nephew, Paul Joseph Thomas, is at boarding school using the same tin trunk that his great grandfather used.

Lord Rodney then apprenticed my grandfather to a carpenter. On my grandfather coming of age he was given an estate consisting of a farm, and a mill at Brampton Brian, on the border of Hertfordshire and Powys, between Knighton and Leintwardine but, like his father, he gambled and frittered it away and returned to the comfort of my grandmother, Anne Davis, who had born a child by him some 4 years previously in 1873 – my father! They married and my grandfather was set up as a carpenter in the village of Eye, which was within the Berrington estate, the home of the Rodneys, about 4 miles of Leominster.

Like all good craftsmen he loved the wood he worked. As well as Berrington work which was put his way, he did outside work. In my youth I was proud to visit the church at Richard's Castle, near Ludlow, where did the whole of the woodwork.

After the marriage of my grandparents my father's name was changed from his mother's maiden name of Davis, to Thomas. In all my grandparents had 7 surviving children. I was their first grandchild.

My grandfather died in 1912 aged 59.

My grandmother lived to be 98. Unfortunately, during the last war she fell and broke her hip. The local doctor committed a grave error. He was of the opinion that she was too old for the bone to knit and placed it between sandbags. It knit, but in the wrong position, and after lying like that for exactly 12 months, she died.

I knew nothing regarding my ancestry until my wife was past child bearing age, when my aunts (both of whom lived into their 90s) disclosed the matter to my brother and his wife, who had a son – Joseph Glyn. They also gave them a family seal of the Rodneys. How that was acquired we shall never know.

My nephew, Glyn, was Senior Fellow, Biology at Lancaster University, but now as a farm on the edge of the Lake District. His wife is the Ombudsman for the area of The Wash to the Scottish Border, and is very often mentioned in the local press, having mediated in some local dispute.

I understand that my father started work at 12 years of age, and was placed in the racing stables at Berrington. During that period, the 7th Baron had a horse entered for the St Leger at Doncaster. Everyone on the estate was paid up and given notice and also a sovereign to wager on the horse. When my father told me of this I commented "that would be a nice little pick-up in those days, dad", he replied "well I only put half a sovereign on". The horse lost 7 lengths at the start but still won the race.

Around this period my father was thrown from a racing stallion and received a badly injured shoulder, so on his recovery his lordship took him for his personal groom and valet and, later, he was his man servant in London. His lordship occupied one floor of a 4 storey house in Belgravia, each floor of which was occupied by a batchelor Earl, so my father saw some life!

When the 7th Lord Rodney was 34 years of age he married Miss Corisande Evelyn Vere, and a son was born to them the same year.

For their honeymoon the couple toured Scotland with a carriage and pair, coachman and groom, and my father and a lady's maid followed with a pantechican and coachman, drawn by 2 horses with all the luggage. The retainers, however, did not visit all the

beauty spots that Lord and Lady Rodney visited but proceeded to the next place where accommodation had been arranged in order to prepare for the arrival of the couple.

I have no knowledge of the date that my father the service of the Rodneys, but later, he and my mother went to work for a family residing in Sloane Square and, presumably, that's where I was born as my birth certificate, issued in the sub division of Belgravia 10 November 1903, lists my father's Rank or Profession as Butler (Domestic).

In 1904 my father obtained the post of Butler to Mr William Aldam Milner of Totley Hall, Derbyshire (Aldam Road is named after Mr Milner). The head gardener Mr David Lewis was engaged the same week and this was the commencement of a lifetime's friendship. Mr Lewis subsequently became Superintendent of the Totley Sunday School for 40 years. He was a batchelor when he first came to Totley and his sister kept house for him at the house in Hall Lane, next to Toft House.

My maternal grandfather was herdsman to Sir Walter Gilbey, the wine merchant, and a great authority on equestrian matters. I well remember the room of my grandparents' cottage with a large glass case on one wall crammed with rosettes, prizes won for showing Sir Walter's cattle.

My grandfather later became manager for a gentleman farmer at South House Farm, Little Hallingbury, near Bishops Stortford. We had some lovely holidays there. We usually went to our respective grandparents for a month on alternate years and my father would join us for the last fortnight.

continued page 7

PUZZLE CORNER

Solve the clues to give the name of a Yorkshire town

- 1 My first letter is in OWLERTON but not in TOTLEY
- 2 My next is in FULWOOD but not in WALKLEY
- 3 My third is in WOODSEATS but not in MEERSBROOK
- 4 My next is n NETHEREDGE but not in CROOKES
- 5 My fifth is in HEELEY but not in NORTON
- 6 My sixth is in DORE but not in STANNINGTON
- 7 My next is in WHIRLOW but not in DRONFIELD
- 8 My eighth is in BRADWAY but not in HIGHFIELDS
- 9 My last is in MILLHOUSES and also in MEADOWHALL

Other Yorkshire towns may be found from some of the above clues in the order given

- (i) 86342916, (ii) 5295 (iii) 149388 (iv) 738624835
(v) 29568 (vi) 96569

From page 6

Later, my grandfather farmed the land which Stanstead Airport now stands.

My first recollections of Totley were when I was just under 2 years of age. On the birth of my brother Ernest I was "farmed out" to Mr Lewis's sister. I remember standing below the cupboard doors where she kept the sweets. I am told I was there for about 3 months "Auntie Poppy" did not want to part with me. I had shoulder length curls up to the age of 5 (Maurice Pearson, who was in the same class at school, must have worn his until he was 6 or 7 years old!).

When I was 11 to 13 years old I used to deliver telegrams. The Post Office at that time was at the corner of Baslow Road and Hillfoot Road and their garden came up to our front yard. Mrs Bradley was the Post Mistress and her husband a gardener-cum-keeper at the Hall. At that time Totley was the nearest telephone to Holmesfield and the Cordwell Valley.

There was an early socialist writer, Edward Carpenter, who lived in Cordwell at the time and was my favourite customer. He used to give me 6pence and a glass of lemonade. There always seemed to be someone at the house, walking around in dressing gown and sandals. It wasn't until I was in my 50s when I read a book on his that I learnt he was a homosexual.

During the 1st World War there was always a battalion of soldiers at the Totley Rifle Range, which was another source of income to Bill Crooks and I. We spent a lot of time at the camp in our boy scouts uniforms, running to Totley Post Office for stamps, or the top shop for toffees etc.

At weekends we were on duty at St John's Abbeydale where the Church Sunday School had been turned into a hospital. Weeks before any wounded arrived we had been released from school some afternoons to go to the Masonic Hall at Dore Station for the ladies of the district (who were going to "man" the hospital) to practice bed changing whilst the patient was still in bed, bandaging arms and legs etc.

I attended Totley Church of England School, Hillfoot Road, where I met my future wife Doris Bradbury. My

best pal at school was Edgar Gill and in the summer holidays I practically lived at his home at Old Hay. Three of us slept in a small patrol tent. It never seemed to rain in those days! The dam was still there, although the water wheel had been removed. Charlie Coates lived nearby. He was an excellent skater and used to spend hours and hours on the dam when it was frozen over.

In our early childhood our playground was in the croft in front of the lodge in Hall Lane. John and Arthur Holding and my brother and I used to team up - oldest and youngest - that was John and Ern against Arthur and I. We were

privileged children, our fathers being in the service at the Hall. We went into the wood and pinched raisins from "Old Bradley's Hut" that was there to feed the pheasants, forbidden ground to any other children of the village.

There was always a large Christmas Party at the Hall when the family waited on the servants. All the neighbouring farm families were there as a little sop for the hunting and shooting over the land they farmed.

Our Christmas parties were at Hall Lodge, our house, or Ash Cottage. Mary Holding was the star turn; she had the ability to recite the poetry we had learned at school, and could continue to entertain by making up a story as she went along. Mary still lives at Ash Cottage. She is the aunt of a well-known Totley sportsman - David Holding.

In the bottom cottage in the 3 on Baslow Road lived Mrs Fisher. To my brother and I there was no-one like her in the world, she had 3 sons at home and the youngest daughter, Jess; 3 other daughters being out in service. Jess later became Mrs Joshua Tyzack - an affair of which I probably have more knowledge than any other living person! I loved the youngest son, Tom, and one of my earliest recollections of him (when I was about 3 years old) is of him taking me by the hand one dark winter's evening and going to Ash Cottage where he milked a couple of cows for an elderly Mr and Mrs Hattersley. When he took the milk to the house he was given about a half-gallon can of morning milk for his mother. I used to go with him when he was mowing and sit on his knees on the machine for hours at a time, while he mowed the land where Main Avenue, Rowan Tree Dell and all that property now stands.

As schoolboys we had a glorious life. We roamed Totley Moss, Blackamoor, Fishers Moor to Strawberry Lee to Fox House. Blacka was a favourite spot for at that time there was a densely wooded area from the end of Short Lane where you entered a dark wood. Our favourite "ducking hole" was the old sheep wash in Bull Wood - that is the small wood between the bottom of Gillfield Wood and the field that backs onto the houses of Rowan Tree Dell.

To be continued

Totley Drum School

Drum lessons in a relaxed and friendly environment. Topics such as music reading, hand and feet development, double bass playing and different styles, along with general advice and guidance. The lessons are aimed at beginner and intermediate players, with any age or gender welcome

Very reasonable rates, and the first lesson is half price



Contact Lee on 07815 168 338 or email totleydrum-school@yahoo.co.uk

HINES 57 DOG GROOMING

- * Grooming
- * Clipping
- * Bathing
- * Hand Stripping
- * Professional Qualified Friendly Service

For more information or to book an appointment:

Call Anita Hine on: 07747 016550

Limb Lane, Dore, S17 3ES

BUILDING FOR THE FUTURE

Had you been living near Totley Brook Road just over one hundred years ago you would undoubtedly have wanted to join the small procession of people accompanying, with some excitement, a corrugated iron chapel that was physically being dragged on a horse drawn bogey from Dore & Totley station to a "green field" site on the new Totley Brook Estate – the area of land purchased in 1888 by the Midland Railway Company and divided into plots to either side of the railway line which had bisected the original driveway from Grove Cottage at the bottom of Totley Rise to Grove House, thus creating a new line of direction to Totley Brook Road.

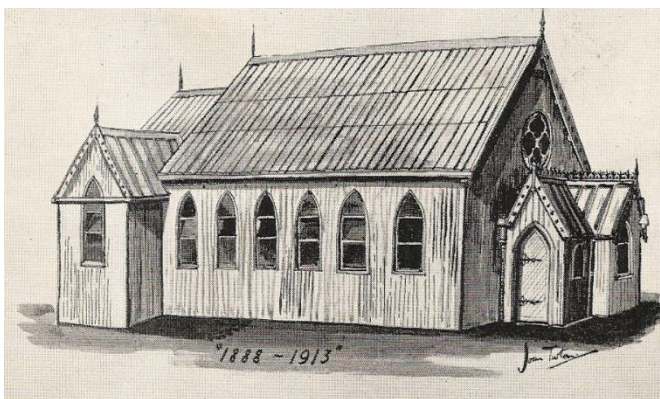
The people behind this great adventure were members of the Dore & Totley Union Church, a group of non conformist friends who, coincidentally, in 1888 first began worshipping together as a house group at The Laurels on Dore Road, the home of Frederick Dieroff. Quite why they gave the name Dore & Totley to their founding church is not mentioned in the minutes of the founding meeting but is

to be remarked upon because the only links between Dore and Totley at that time were Dore Road and Hillfoot. The parish boundary with Totley being at Old Hay Brook suggests the congregation were already planning to expand their membership in to Totley. As their numbers grew they initially negotiated the rental of a school room each Sunday from the Licensed Victuallers Association (the Alms Houses by the railway station) and thereafter the purchase of what was happily referred to as a "tin tabernacle" to be sited on land by Dore station, courtesy of the then Midland Railway.

From records at the time it appears the Licensed Victuallers were very suspicious about renting rooms to a body of people who might preach abstinence – despite strong affirmation to the contrary by the congregation. There are also frequent references to the fraca caused by not a few engine drivers enjoyed blowing their whistles as they passed the "Tin Tab", enraging the church caretaker, who would rush out waving a shovel! So Sunday worship was not without its excitement it would seem.

The move to Totley Brook Road some twenty years later and the subsequent building of the present church just before the outbreak of the First World War was certainly driven by the opportunities the early church members saw in the rapid growth of the new, emerging Totley. Their purpose was to own their own plot of land and they were encouraged by their architect to create a decent, sensible, ecclesiastical building in brick-lined millstone grit, echoing the Derbyshire moors so visible from what would be their front porch. Whilst the exterior, with its mullioned windows and leaded lights left no doubt that it was a church, the interior was designed to be a meeting hall, flexible in purpose and with wooden tip - up seats, "the first of the kind on the market" because this church was going to be needed seven days a week for all the community activities it was already getting involved in.

Very much of free and independent spirit, ministers and lay preachers of Congregational and Baptist Church persuasion were invited to lead worship for many years and this "freedom of spirit" still pervades to this day. The first minister to be actually ordained to the church was called in 1910. Whilst maintaining denominational independence up until 1972, affiliation



with the Congregational Church lead to members voting to become part of the United Reformed Church when the Presbyterian and Congregational Church of England Wales joined together as one body. Currently sixty eight thousand people make up fifteen hundred URC congregations in the country today, with approximately seven hundred ordained ministers.

So, like many denominations, ministers today oversee at least two or three churches. The Reverend Shirley Knibbs is minister at Dore & Totley and as if having one church embarking upon a major re-development isn't enough, Shirley has Meersbrook Park URC undertaking a much more dire need for re-building on Chesterfield Road. She also ministers to The Michael Church on Low Edges estate.

Dore & Totley has contributed to the community over the years and there will be many who can remember with fondness attending the plays given in the church hall twice a year. The Literary and Debating Society from which the Dramatic Society grew was formed in 1899. The last, hand written bound volume produced by the Debating Society in 1915 is about a Belgian soldier convalescing in the St John's church hall (now the Post Office sorting office). Over and above light hearted entertainment a social club was formed to provide friendship, light relief and support during the dark days of the Second World War, Totley Brook Club meetings for elderly people living on their own take place every month and have done so for decades. Facilities for lunch clubs, play groups, youth groups, scouts, guides, brownies and beavers, badminton and drama continue. The church continues to live up to the aspirations expressed by one who was at the opening ceremony in 1913 "In this simple building there is no special symbol of the eternal presence. There is no holy of holies, but it is one of the surest things that there will be such an opening of doors to the unseen that men might find themselves in the presence of God". Words which resonate in the church members decision to assist in the financing of the on-going S17 Youth Project.

The building of the church in 1913 was followed by a church hall (to replace the old tin tab but regrettably without the benefits of cavity walling and sound insulation materials) in 1930, a Manse to the rear of the plot on Chatsworth Road and a smaller church hall built on the foundations of an air raid shelter.

Over the last four years members have been planning how the church premises might be brought up to date and more relevant to the current needs in our community. Clearly there is an on-going need to provide companionship and help to older people, especially those who are housebound, and to provide encouragement and facilities for young people. **PTO**

Following the refurbishment of the sanctuary in 2008 with new facilities that will not only create more flexibility and space but also make it available for use by many more organisations in addition to worship on Sundays, a new integral church hall is to be built. This will have modern kitchen, new toilet facilities, new central heating and much better insulation to walls, roof and windows – thereby reducing maintenance overheads and time making a positive contribution to reducing carbon footprint.

The "profile" for this new hall will mirror that of the 1930s building so looking at it from across the railway line there will be little difference in appearance. The contractors will be re-claiming the stone work of the original wherever possible but the new "footprint" will provide off-the-road parking. Whilst the church and church hall are designed to be run independently, the lobby between them and the creation of a new doorway into the church will make the latter far more open and accessible to people using the premises – thus building upon the "open church" policy that the founding members held so dear.

The costs of the development have been financed by the sale of the former Manse on Chatsworth Road, the small church hall and the field which adjoined the church and was the setting for many fetes and barbeques in earlier years. Sadly, the footpath which linked the Manse to the church and which has been a short cut for residents from Chatsworth and Vernon Road (and worshippers!) to the shops on Totley Rise for so many years has been lost.

The gain in having a new building with the very highest standards in safety, hygiene and accessibility is something which we hope will be shared by the communities of Dore and Totley for many more years to come. So, if you have any thoughts or ideas on activities you feel would be of benefit, please drop the church a line.

Richard Moffat

LEONARD CHESHIRE, MICKLEY HALL

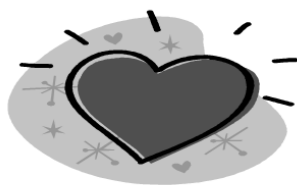
FORTHCOMING EVENTS

THURSDAY FEBRUARY 3RD. 12NOON-2PM



CHINESE NEW YEAR LUNCH £4.50

MONDAY FEBRUARY 14TH. 10AM-1PM



VALENTINES LUNCH AND BRING AND BUY

3 COURSE LUNCH WITH WINE £5.00

BRING AND BUY REPLACING CANCELLED CHRISTMAS FAYRE

BRING AN ITEM AND BUY ONE.

Brand New Dance session for Adults in the South West!

Come along and bring a friend or two to the new 'Come Dance With Me' programme aimed at Adults over the age of 45.

Styles of Dance will include, Line Dancing, Salsa, Ballroom and many more.

The session is held at Ecclesall Parish Halls, starting Friday 4 February and will run until the 11 March.

The time of the session is between 1.00pm and 2.00pm and will cost just £1.

If these taster sessions prove successful we will look to carry on the sessions.

For more information please contact James Milovanovic-Firth on 0114 205 3724

Scout Lottery

Winners of the 1st Totley Scout Lottery November Draw.

1st Prize No 21
10 Piece Sheffield
Kitchen Knife Block
Mr and Mrs Watson
Marstone Crescent

2nd Prize No 22
£10 Voucher
Mrs Hanson
Laverdene Drive

December Draw.

1st Prize No 28
Louise Dodd
Green Oak Drive
Christmas Hamper

2nd Prize No 7
Mr P Bennett
Totley Hall Croft
Morphy Richards
Slow Cooker

Peter Casson

Tea & Coffee Afternoons

To all elderly people in this area:-

Do you fancy tea and cakes (free) on the 3rd Sunday afternoon of the month between 3 and 4.30 pm? If so you will be very welcome to join us in the lounge of Totley Rise Methodist Church and enjoy tea, conversation and a variety of entertainment, transport is available if required

Please telephone if you have any queries.

Anne and Len 236 6558

or Angela and John 262 0033

Ain't That The Truth?

A Paraprosdokian is a phrase with an unexpected ending.

I list a few for you to ponder upon:-

Do not argue with an idiot. He will drag you down to his level and beat you with experience.

I want to die peacefully in my sleep, like my grandfather. Not screaming and yelling like the passengers in his car.

The last thing I want to do is hurt you. But it is still on the list.

Light travels faster than sound. This is why some people appear bright until you hear them speak.

If I agreed with you, we'd both be wrong.

Knowledge is knowing a tomato is a fruit; wisdom is not putting it in a fruit salad.

The early bird might get the worm, But the second mouse gets the cheese.

Evening news is where they begin with "Good evening", and then proceed to tell you why it isn't.

Tony Reynolds

GARDENING TIPS FOR FEBRUARY

I think I mentioned last month that we gardeners have a lot to put up with, insects, moulds, scab, slugs, etc. We talk about the weather, not surprising really after the last lot, I measured 16 inches of snow on our outhouse flat roof, and 24 inches on the lawn where it had drifted I could not see the fishponds at all, and when the snow slid off the barn roof it took the guttering with it, not the flimsy plastic stuff but cast iron! What a clatter that made.

The tap water froze; the water in the greenhouses froze along with most of the plants, I think we may have to start from scratch this year. They are forecasting more snow as I write let's hope it's not as prolific as the last lot.

The garden is about the worst I've ever seen it, leaves covering the ground everywhere and have been pressed down by the snow which makes them very difficult to sweep up, the garden vac would not be very good even if I could manage to manoeuvre it, and it is too heavy especially when it's full of wet leaves (anybody want to buy it, hardly used by one careful weak owner).

I am hoping to get my onion seeds in, I have heard on the garden telegraph that my friendly rival has seedlings already poking up, he must be trying to beat my whoppers on the show bench at the Totley Show, and I must try harder as my old school teacher used to say.

I'm looking forward to springtime. Hope Mother Nature has not got any more surprises in store for us, at the moment it's been raining all day (early Jan) its washed all the snow away but everything looks really miserable a bit of nice sunshine would cheer us all up.

We are off on holiday in a day or two we hope the weather is kind to us though the forecast is not too good but they have been known to be a wrong at times.

Hope you all enjoyed your Christmas and New Year festivities and are now ready to gird up your loins to get stuck into some healthy and rewarding gardening, it is slimming you know (especially after Christmas pud) and it clears all the cobwebs, I'm look forward to seeing one or two of you looking really slim and lissom after a good dose of gardening it reaches parts that other activities cannot reach you know.

Enjoy your healthy gardening!!!!

FLOWERS. Cut down old perennials and fork round plants. Work in a bit of Growmore or similar. Clean up rockeries and top dress with compost and chippings. Plant out (on fine days) herbaceous perennials. If you have a heated greenhouse; sow summer bedding plants, like snapdragons, fibrous rooted begonias, busy lizzie, petunias and verbena. This will give a bit of room later for the faster germinating varieties. Give the flower beds a top dressing of compost (taking care not to disturb any plants or bulbs). This will liven-up the soil, which the bedding plants will appreciate. Watch out for slugs, especially those around newly sprouting shoots such as delphinium and hollyhocks. Put down slug bait or beer traps as soon as they appear.

VEGETABLES. Add lime to soil as necessary, two weeks before any sowing takes place. Also work in a dressing of Growmore or similar balanced fertiliser. Onion seeds should be showing through by now — if you haven't planted them by now, get them in, or the prizes at Totley Show will go to someone else (me for instance)! Top dress sprouting broccoli and spring cabbage with nitro chalk. Clear and prepare ground, ready for planting, as soon as crops are finished.

TREES, SHRUBS & FRUIT. Prepare ground for any spring planting you have in mind. Fruit trees growing in grass often make little growth because they are starved of nitrogen. This can be remedied by feeding now with sulphate of ammonia or nitro chalk. Protect fruit bushes from birds with a covering of fleece or netting as the buds begin to swell. Prune autumn fruiting raspberries now. Cut them back just short of ground level. Prune gooseberries before growth is too advanced. Firm in any newly planted bushes and trees that may have been loosened by frost. Prune late flowering clematis. Cut hard back shrubs like spirea, callicarpa, trumpet creeper. Prune winter flowering jasmine and other winter flowering shrubs as soon as they have finished flowering. Trim back heather as blooms fade with shears, to prevent them getting straggly.

GREENHOUSE & INDOOR PLANTS. Several well-known greenhouse plants require pruning now; bougainvilleas should have last year's growth cut hard back. Bouvardias, gardenias, fuchsias, zonal and

ivy leaved pelargonium should be cut sufficiently to give them a solid foundation for the coming season's growth. Start watering (sparingly) from now on. A rise in temperature will help but is not essential; they all need as much light as possible. Later in the month, start dahlia tubers if you want to increase your stock of plants, place tuber in a deepish box with a base of peat or potting compost. Put more peat around them until the fleshy tubers are just covered but the stumps of last year's growth are just showing. Water them and place the boxes in a light or semi—light place. As soon as growth starts, they need as much light as possible. Water as necessary, any temperature over 13C (55F) will start them into growth. Pot early begonias and gloxinia tubers, as schizanthus become established in their final pots, they should be fed a liquid feed once a fortnight. All feeding of pot plants should be done sparingly, nothing is gained by giving too much. Do not feed dry plants — water them first. Seed planting and propagation by cuttings can be started in earnest now. Try a few types you've not had before, it makes for a bit of variety in your life. I usually have 4 or 5 new varieties each year as well as Chilterns Lottery mixture (greenhouse plants). They put all the seeds left from last year in a pot and give them a stir and packet them. I have had some weird specimens as well as some fine, unusual pot plants. I have never been disappointed yet.

LAWNS. Keep clean, spike and top dress if you didn't do it last year. Keep off if it is frosty. Watch out, spring is just around the corner.

Cheerio for now, Tom

Women's World Day of Prayer

This year's Women's World Day of Prayer will be hosted by St Johns Abbeydale Road. The theme is "How many loaves have you" and has been prepared by the Christian Women of Chile.

The time is 10.30am, the date Friday, 4 March. All women in the S17 area (and beyond) are very welcome, it would be nice also to see some of the chaps.

Refreshments will follow. Any enquiries to Rosemary on 236 3027.

Woodland for Wild Birds

Wild birds are a good indicator of the wellbeing of the UK's wildlife, as recognised by the Government's Quality of Life Indicators. There has been an alarming decline in the number of woodland bird species in the last 25 years – 20% decline of 33 woodland birds. So why this dramatic change? It's attributed to the lack of woodland management so there is less variety of ages of trees and species.

Fortunately the Forestry Commission and the RSPB are offering help to rejuvenate woodlands for 15 target species. Go to www.forestry.gov.uk/eastmidswoodlandbirds, click on the 'Woodland Birds Grants' section and then click on the 'Woodland Birds WIG80 grants' and look at Appendix 2 for a list of target bird species, reasons for their decline and potential solutions.

Anyone who knows Blacka Moor will know that it is full of archaeological features, especially in the woodlands, which illustrate its past. Charcoal platforms, white coal kilns, spoil tips, banks and hollow ways are all evidence of the ways in which the woods were used as an integral part of the local economy. You can imagine that the woods were quite a busy place to be.

We can rejuvenate some parts of the woods by restarting some woodland activity. A programme has been put together for felling two small groups of trees, and some thinning through two areas of the woodland, plus coppicing, rhododendron control and installing bird boxes. Whilst the woods are fairly good for birds in some places, there are areas that could be improved. We've had advice from the RSPB, Forestry Commission and of course our dedicated bird surveyor Jim Clarke. Jim knows the site incredibly well, and is usually the first to see any new species arrive at Blacka (notably the first ever British record of the homeyeri Great Grey Shrike in November).

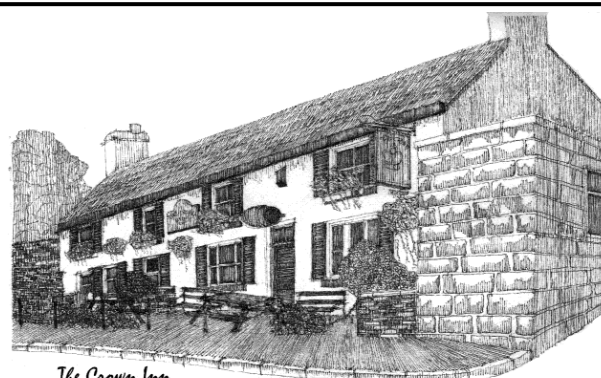
The trees being removed are sycamores (a non-native species). Whilst they do have some value (the biomass of insects), their heavy canopy casts deep shade, resulting in a limited shrub layer growing underneath. You can see where sycamore completely dominates, making the woods dark in the summer. Removing some sycamores will open up the canopy and let light onto the woodland floor, providing opportunities for tree seeds to establish, saplings and trees to develop and create temporary glades (so valued by redstarts, tree pipits and lesser redpolls). It may also expose areas of bluebells, which can then flower and seed, and perpetuate the bluebells in the woods. Group felling and thinning is making the most of natural processes, resulting in a whole variety of age structures and species of trees to flourish. We'll also be creating some standing deadwood that'll benefit spotted flycatchers, lesser-spotted woodpeckers, redstarts and various tits.

Nest holes and deadwood insects are an important part of the woodland's ecology. We're also hoping to install pied flycatcher boxes, following the success of previously installed boxes 5 years ago. Whilst a small percentage of trees will be felled, we anticipate the benefits proportionately will be considerable. Jim will continue to survey the woods, and this information will be used to conclude the results of the work and inform future decisions.

The alternative is to let nature takes its course and not manage them at all. This certainly has its merits, and in fact this is exactly what's happening in the majority of the woods. But there is a correlation between the decline in woodland birds and the management activity. So rejuvenating the woods in small, localised areas will help us secure populations of some species, and we can all enjoy the birds and their song when walking through the woods, summer or winter.

We're also looking into the use of a heavy horse for moving logs within the woods to reduce the amount of machinery, noise and impact on the ground. We'll be advertising this nearer the time so you can come and have a look at the horse loggers at work. We're also hoping to use some of the timber as firewood, which can offset some of the costs. Access to the woods will be affected but only for very short periods of the day (it'll be made clear on site).

A grant has been submitted and indications so far are that the application is a success. The work will be funded by the Forestry Commission and Natural England's Biodiversity Action Fund. If you'd like to comment on the work planned, go the Public Register on the FC website www.eforestry.gov.uk/glade. Look at the East Midlands region. It's not yet on the register, but keep a look out (it's on for 28 days). Or speak to me or come to the Reserve Advisory Group meeting (Wednesday 26th January 2011, 7pm at Totley Rise Methodist Church). Annabelle Kennedy 0114 263 4335, or email a.kennedy@wildsheffield.com or visit us at www.wildsheffield.com (agendas and minutes of meetings are on the website).



The Crown Inn

Tony and Julie at

The Crown Inn

Welcome you for

Good Quality, Home Cooked Food

Tuesday – Friday

12-2pm & 5.30-8pm

Saturday & Sunday

12-3pm

Come & join us for

Good Beer, Good Food & Good Music

Tel 0114 236 0789

CLOSED SUNDAY EVENING

Visit our website: www.crown-at-totley.co.uk

LIVE MUSIC

8th February

ZAK BLACK

1st March

**CARY BAYLISS &
IAN BELLAMY**

15th March
EMERALD – Celtic
Rock Band
29th March
RODGER

All Saints Church,

Totley Hall Lane

Services for February

6 th	10am	Holy Communion
	4.30pm	Holy Communion
13 th	10am	Baptism
	6.30pm	Open to God @All Saints
20 th	10am	Holy Communion
	4.30pm	Evening Prayer
27 th	10	All Ages All Together
	4.30pm	Holy Communion

February is the month for Valentines.

The history of Valentine's Day and its patron saint is something of a mystery, but it seems to come from both Christian and ancient Roman traditions. One legend is that Valentine was a priest during the third century in Rome. Emperor Claudius II thought that single young men made better soldiers than married ones, with wives and families, so he outlawed marriage for young men. Valentine thought this was unjust and continued to marry young couples in secret, so defying Claudius. When Claudius discovered this he ordered Valentine be put to death. Other stories suggest that Valentine may have been killed for helping Christians to escape from harsh Roman punishment and torture. One legend suggests that Valentine whilst in prison, fell in love with a young girl, possibly the jailer's daughter, who visited him in prison. Before his death it is alleged that he wrote her a letter and signed it "from your Valentine", making this the first valentine ever. It is thought he died in 270AD. This is only one of many legends about Valentine.

Be My Valentine

A Prayer for February and Valentine's Day.

God of Love, thank you for those we love, especially family and friends. Let your compassion, generosity and power continue to shine in our lives long after the flowers and chocolates are gone, that we and all who we love might remember that, You love us now and always. Amen.

Chocolate Nougat Hearts

375grms milk chocolate, broken into pieces.
45g butter chopped
1 cup thickened double cream
200g nougat or mixed nuts chopped
100g flaked almonds

Place butter, cream and chocolate in a heat proof bowl set over a pan of simmering water and stir until melted.

Add nougat or mixed nuts and almonds mix well. Pour mixture into a greased lined shallow tin 18cm/28cm. Refrigerate for 2hrs or until set.

Using a heart shaped cutter, cut out hearts from the set mixture.

Be prepared to have fun!



Calling all boys age 6 - 8 years of age.



Would you like to learn whilst having lots of fun?

Earn badges whilst learning and having fun?

Make new friends? Go on outings? Attend Scout Hut sleepovers?

Build dams, Make a fire and cook outdoors?

Play and learn sports with professional coaches? Enjoy games and party nights?

Be involved in raising funds for charities? Help and work within the community?

If you think that all this sounds good and something that you would like

Then why not join our Beaver Scout group?

We meet every Tuesday term time only, 6:15pm - 7:15pm
At The 215th 1st Totley Scout Hut HQ, Aldam Road, Totley.

We have now opened up our waiting list and are enrolling all new Beavers.

If you wish for any further information please contact:



Mrs Faye Catton-Norton BSL 07752162796

(Beaver Scout Leader at 215th 1st Totley 10years, Assistant Leader 1998-2000, Previous volunteer helper at 85th St Johns Beaver Scout group Abbeydale Road South)

PUZZLE CORNER

Solution to find the towns

ROTHERHAM; (i) BRADFORD (ii) HULL (iii)
WHITBY (iv) HARROGATE (v) FILEY (vi) LEEDS
Don Ashford

KESA presents
MASKED BALL



18th March 7 pm – 1am

Baldwin's Omega

5 course dinner

Live band & Disco

Masks & black tie optional

Booking & reservations Call Josée on 236 2481
Or Visit www.ecgbert.sheffield.sch.uk

DO YOU NEED HELP?

-In coping with worry, depression, addiction or illness
(physical, mental or spiritual)

Christians believe, through Jesus, God can and does,
comfort, heal and bring peace of mind, in response to
prayer.

Members from All Saints and Totley Rise Methodist
churches are currently offering to pray in confidence for
anyone who would like to come to:

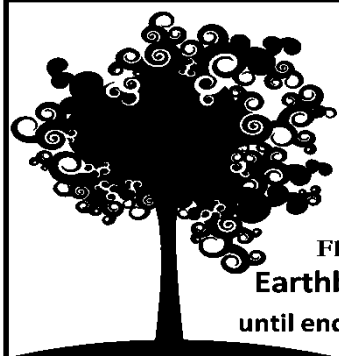
TOTLEY LIBRARY BUILDING ON SATURDAYS

between 12.30 and 2.30pm

and

HEATHERFIELD CLUB (BASLOW ROAD) on WEDNESDAYS between 2 and 3pm

For information ring Brian 07877 303709



**Sharrow Vale
Hardware**

370-372
Sharrow Vale Road,
S11 8ZP Tel/fax. 0114 268 6427

Now Open!

Fireplace accessories,
Logs, kindling & paraffin
Recycled products - Key
cutting - screws, nails and
fixings sold loose - fancy goods
ecological cleaning – **Organic Veg &**
Flower Seeds now in stock!
Earthborn Eco Paints 10% Off
until end Feb when mentioning **Totley**
Independent



**The Croft
Podiatry &
Chiropody
Practice**

**DOMINIQUE MATTHEWMAN
B.Sc. (Hons) MChS
HPC REGISTERED**

**CLINIC APPOINTMENTS &
HOME VISITS
41, BASLOW ROAD
TOTLEY RISE SHOPS, S17 4DL**

**ACCEPTED BY WESTFIELD & MANY OTHER
HEALTH SCHEMES**

TEL.MOB. 07738 359584

Mark and Sally Fletcher invite
you to

The Grouse Inn

Longshaw

Sheffield S11 7TZ

Meal times:-

Mondays 12.00 to 2.30pm
Tuesdays to Friday's 12.00 to
2.30pm and
6-30pm to 9-30 pm
Saturdays 12.00 to 3.00pm
and
6.30pm. to 9.00pm (drinks –
open all day)
Sundays 12.00 to 9.00pm
Phone 01433 630 423

Yippee it's winter



FIRE UP THE CLEARVIEW

SEE OUR WINTER COLLECTION OF CLEARVIEW
VERY CLEAN WOOD BURNING STOVES
www.clearviewstoves.com
www.burgin-conservatories.co.uk

BURGIN
CONSERVATORIES &
CLEARVIEW STOVES

Showrooms
302 Abbeydale Road
Sheffield S7 1FL
Open Tues to Sat 10-5,
Sundays 10-4

FOR A FREE QUOTATION PLEASE CALL
GRAHAM BURGIN 07973 321075

R Rose & Co

Chartered Accountants & Business Advisors

Specialists at
looking after the affairs
of small businesses.

For a **FREE** initial consultation
please contact Roger Rose FCA on
0114 281 2331

From business start-ups and general accounting, to support
and advice in business development and strategy,
we provide our clients with our personal one-to-one service.
To find out more please call 0114 281 2331.

213 Derbyshire Lane, Norton Lees, Sheffield S8 8SA



Totley History Group has just reached it's third birthday.

We have now been going since January 8th 2008 and have accomplished quite a lot since then.

We have a management committee and a constitution to help us if we want to apply for grants etc.

We have had a succession of guest speakers on various subjects all of which have been well attended.

We have been on interesting walks around the neighbourhood and have others planned for this year.

We have members trained to use the equipment for Oral history recording, enabling us to have a record of times gone by in Totley and surrounding areas.

Anyone who would like to spend an hour or so reminiscing is welcome to contact Ann or Christine to make arrangements. Ann 2360743, Christine 2361631.

We are planning to exhibit some of our projects at local venues and history fairs following our success at Totley Show and St. John's Abbeydale.

Unfortunately we had to cancel our annual get together in December due to the bad weather but we re-held it in Totley library on January 8th.

We had a good laugh ,an excellent raffle and some delicious food.

So we are looking forward to our new schedule and hope you will join us.

We had a good laugh ,an excellent raffle and some delicious food.

So we are looking forward to our new schedule and hope you will join us.

So we are looking forward to our new schedule and hope you will join us.



Shepley Spitfire

56 Mickley Lane, Totley Sheffield - S17 4HE 0114 236 0298

MENU TWO FOR £8

Served daily from 11am until 9pm

Sunday Carvery still only £4.99

Roast Beef, Pork or Ham. Vegetarian options available

Served between 12 - 5pm - Sunday Roast available after 5pm

Hand Pulled Beers always available

Greene King IPA - Ruddles Best - Seasonal Ales

Quiz Night every Tuesday form 9:30pm

General Knowledge Quiz and Nibbles followed by

"OPEN THE BOX" your chance to win our Cash Jackpot!

The Home of Big Fish Friday!!

Beer battered Cod fillets, Chips and Peas still two for £7.99!!

NEVER MISS A MATCH AGAIN - WATCH TWO MATCHES AT ONCE ON OUR

BIG FLAT SCREEN TV'S

sky SPORTS

ESPN

BOOK NOW FOR St Valentine's



love your local

G9 Design

Architects & Design Consultants

- Provision of full architectural services from sketch proposals to final completion certification
- Planning Applications & Building Control Approvals
- New Build or Extensions
- Domestic or Commercial projects
- Complete client commitment

Gary Grayson

5 Newfield Lane,

Dore,

Sheffield S17 3DA

Tel: - (0114) 2352335

Mobile: - 07976431740

Email: - gary@g9design.com

Arb Registered

RIBA Chartered Architect

Paul Reynolds

Licensed

Hackney Carriage Driver



For a reliable, wheelchair friendly
Taxi Service, from S17 to:-

Airports, Hospital Appointments,
Theatres and Restaurants

Just call Paul on 07950 418875



Hatha ..YOGA CLASS..

Totley and Ranmoor

For more information or to book a place call

RACHEL on (0114) 236 9943

BWY Qualified Teacher

BODY, MIND & BREATH

Enjoy the union of yoga



For
Windows
With Style

Sheffield Factory Showroom

106 PROSPECT ROAD

HEELEY, SHEFFIELD

Sheffield (0114) 258 5496

Rotherham (01709) 512113

Looking for designer labels?

Let our unusual Vision Plan help you pay for them and much more!

Offering all the benefits of 35 years' experience of South Yorkshire's largest independent firm of opticians.



- Friendly, qualified staff
- Eye examinations
- High-tech diagnostic retinal camera and MacuScope
- Wide choice of spectacle lenses, contact lenses and stylish frames
- Special offers

ASK FOR A
VISION PLAN
LEAFLET

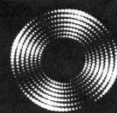
GUESS DIESEL GANT
EYEWEAR

POLICE EMPORIO ARMANI

Visit our website and make your choice of designer frames at one of our practices including 63 Baslow Road (tel: 236 4485) and our extensive new premises at 634 Abbeydale Road (tel: 255 6554)

www.mko.co.uk

Entrust Electrical



For all your electrical requirements in or outside the home you can trust **Entrust** to do it right!

- ✓ Full or Partial House Rewiring
- ✓ Additional Sockets, Switches, etc
- ✓ Energy Efficiency Enhancements
- ✓ Contemporary & Classical Refurbishments
- ✓ General Electrical Maintenance & Repair
- ✓ Homebuyer Electrical Safety Surveys
- ✓ Telephone and Computer Data Points
- ✓ Garden, Pond & Other Outdoor Electrics
- ✓ Security Lighting & CCTV



City & Guilds
Qualified

(0114) 2352084
07935 250814

www.entrustelectrical.co.uk

Old Hay Close, Dore, S17 3GP



LUNCHTIME SUPERVISOR VACANCY



We are looking to recruit a new Lunchtime Supervisor to join our dedicated team. The role includes helping children and maintaining the cleanliness of the dining room, supervising the children in the playground, dealing with minor injuries and generally enhancing the children's enjoyment of lunchtimes.

We are committed to the safeguarding of all our children and promote active playgrounds. We encourage adults to take the lead in organising playground games and directing our team of playground leaders. We can offer a supporting and welcoming environment and a committed and hardworking team of staff.

The post is for 5 days per week, working from 12:00 to 1:15pm and the rate of pay is Scale point 4 - £12,145 pro rata

Enhanced CRB checks will be required for this post.

Closing date: 7th February 2011

Chris Stewart

Acting Head teacher

Tel: 0114 2364482

EMAIL:- enquiries@totley.sheffield.sch.uk

Website:- www.totleyprimaryschool.co.uk

"need help in your garden?"

...we can help *you*

the
ABBEYDALE
gardeners

Kevin and Mark from the recently closed Abbeydale Garden Centre, have started their own Garden Services Business.

Kevin Hunter 07818 20 12 42

Mark Naylor 07739 75 23 19

"give us a call, no job too small."

**MENS BY KAREN AT
HAIR BY PATRICIA BARBER**
at 53 Wollaton Road, Bradway.

Karen is available every Thursday and Friday (9am to 5pm) and every Saturday (9am to 1pm). Telephone for appointments 0114 2366247 and walk-ins are warmly welcomed. Karen will be pleased to meet you

HEARING AIDS

MAURICE NAYLOR FBSHAA RHAD is your local hearing aid specialist and at your request will test your hearing in your own home, free of charge, and if needed you can try a custom made aid for four weeks without obligation to purchase.
Tel : 262 0010
In the ear digital from £495



Your local Rose's Bread stockist

Coffee Shop now open

Monday to Friday 8am to 4pm, Saturday 8am to 1pm

51/53 Baslow Road
Tel: 236 4238

Blacka Moor Volunteer Days
First Saturday of the month
10am – 3pm



Sheffield & Rotherham

Regular volunteer days to conserve Blacka Moor Nature Reserve are now taking place on the first Saturday of every month (except the January volunteer day, which will be held on the 8th). Tasks vary from footpath improvements and access work, to habitat and vegetation management. Tea and biscuits are provided. Meet at Stony Ridge car park (the small car park at the end of the woodland on the A625 Hathersage Road). Grid reference: SK 277 806.

Contact details: www.wildsheffield.com. Or phone 0114 263 4335. Email h.wittram@wildsheffield.com for information on the volunteer days, or a.kennedy@wildsheffield.com for anything else.

Guitar tuition
acoustic • electric
bass • all styles
Sit grade exams or play for fun!
All ages welcome –
beginners to advanced
Jane Bowns
T 0114 236 0202 M 0779 8151 172

J Barlow t/a

Horizon Electrical

*Faults, Rewires, Sockets, Lights,
Cooker Points, Electrical Showers,
Phone Points, Security Lights*

No job too small

Fully qualified with friendly advice

**Ring Totley 236 4364 or
Mobile 07772 483154**



MALLORN
ROOFING CONTRACTORS

**REROOFS • ROOF REPAIRS
FLAT ROOF • GUTTERING**

**0114 235 6002
07853 350085**

7 DALEVIEW ROAD, BEAUCHIEF

**BRADWAY
INSTALLATIONS**

**Kitchens, Bathrooms.....and everything in
between**

- Complete Kitchens – Installation or supply and installation
- Kitchen Refits – Replacement worktops/sink/hob etc. Worktop / cabinet repairs
- Bathrooms - Cloakrooms - Domestic plumbing - Tiling Laminate / Vinyl flooring

All work undertaken is fully insured and guaranteed

**Ring Peter - 0114 236 5995
Mobile - 07766 411355**

SLIMMING WORLD

10 WAYS TO MAKE SURE IT WILL BE THE LAST TIME LOSING WEIGHT IS YOUR NEW YEAR RESOLUTION. THIS TIME MAKE IT LAST FOREVER

1. Focus on your weight loss goal and prioritise it.
2. Be sure you really want to lose weight for yourself. Doing it to please someone else may only lead to short term weight loss.
3. Take advantage of all the group support at your local Slimming World class. Even if you are not a 'joining in' person, you'll be surprised how motivating it is.
4. Accept that you will have ups and downs in your weight loss journey, and be forgiving of yourself if you hit a difficult patch.
5. Listen to your 'inner script' and make a conscious effort to talk to yourself in a positive, encouraging way.
6. Keep up your interest in your healthy eating plan by trying new foods, new recipes, and new ways of using your Sins. This will help you avoid getting in to a dieting rut which can be boring and demotivating.
7. Be honest with yourself about what you are expecting from your weight loss and how you are getting on with Food Optimising week by week. People who set unrealistic targets for weight loss or body shape are more likely to give up than those who set achievable targets and share their ups and downs.
8. Go back to your class even after (especially after) you've had a weight gain. You will not be judged, just helped and supported.
9. Keep setting new goals and rewarding yourself for milestones until you reach your target weight, and afterwards!
10. Don't put your life on hold until you've lost weight. You can still enjoy life and lose weight. Think of your dreams and ambitions and bring them to the fore. The positive feelings you get from starting to 'live a little' can only help your motivation and your weight loss.

Group details:

Bradway Annexe, Thu 5pm & 7pm

Dore Old School, Tues 5.30pm

Tel: Alison Murphy 07815 046569 for further details

Heatherfield Club, Baslow Road - Mons 7.30pm

Tel: Anne 0114 235 0431 for further details

PhysioFOCUS

at Totley Rise Dental Practice
85 Baslow Road,
Sheffield, S17 4DP



Physiotherapy treatment available for:

- Back and neck pain
- Sports injuries
- Sprains and strains
- Joint and muscle pain
- Arthritic pain
- Whiplash
- Repetitive strain injury
- Headaches

Appointments: 0114 2360333

Also available:

- Pilates classes
- Pilates 1-2-1
- Golf Fitness Screening
(as used by consultants to UK,
European and Australian PGAs)

For more information please call:

Emer on: 07792 422909

Rachel on: 07956 908454

APPLE LANDSCAPES and APPLE FENCING

www.applelandscapes.com

QUALITY SERVICE AT AFFORDABLE PRICES

Patios • Paths • Walling • Dry Stone Walling • Drainage Work

• Indian York Stone Paving • Railway Sleeper Beds

Garden Tidy Ups etc. No job too small

Fencing & Gates Supplied Only

or Supplied & Fitted

Only Quality Materials Used

FULLY INSURED

Call for free quote

01246 237505 • 07782 167540

Would you like someone to
Type letters? Pay bills? Help record family memories?
Sort and file papers? Prepare an inventory?
Anything else ???

Then you should call

Secretarial and Administrative Services

Swift, efficient, confidential service at your home.

Pay-as-you-go.

Ring us on 0114 235 0071



Tel/Fax: (0114) 255 4689

Mobile: 07831 802539

TRISTAN SWAIN

LANDSCAPING AND MAINTENANCE

UNIT C4

Sheaf Bank

Business Park

20 Prospect Road

Sheffield S2 3EN



LADIES FASHIONS

**SKIRTS, JUMPERS
T-SHIRTS,
TROUSERS
HABERDASHERY
& ALTERATIONS**

**DRY CLEANING
SERVICE
LAUNDRY SERVICE**

ROSIES

164 BASLOW ROAD, TOTLEY.
TEL: 2621060



**M. Scriven
(FRUITERAMA)**

MARTIN SCRIVEN

**HIGH CLASS FRUIT
& VEGETABLES**

37, Baslow road

Tel. 236 7116

Orders Delivered





GWS

Technology Solutions



PC Problems/ Repairs/ Servicing No Job Too Small
 Wireless & Internet Setup New PC's & Upgrades
 PC Setup/Data Transfer Safe PC Disposal Tuition
 Software/Hardware For All Your PC Needs

Guy Senior

Phone: 0114 2352662 Mobile: 07890030453

Email: guy@gwstech.co.uk

Web: www.gwstech.co.uk

GWS, 5 Conalan Avenue, Bradway, Sheffield S17 4PG



253 Baslow Road, Sheffield, S17 4DU
 Tel: 0114 2360 583 Mobile: 07801 346 455

R.M.M BUILDING SERVICES

25 YEARS EXPERIENCE

All types of building work carried out including- Drop kerbs, block paving (drives, paths, etc), extensions, general building repairs and maintenance.

Phone Rob on- Mob- 07906108567

Home-2352190

**Activ
Physiotherapy**
and sports injury clinic

@ Synergy,
162 Baslow Road,
Totley,
Sheffield, S17 4DR.

**The Official Physiotherapy clinic for
the Sheffield Steelers Ice Hockey Team.**

Treatments available for sports injuries, back & neck pain, joint problems, muscle & ligament strains, repetitive strain injuries, post operative rehabilitation, headaches & acupuncture.

Clinic registered with major insurance companies, can claim through the Westfield scheme.

Ring Andy for more information:

0114 235 7845 or 07901 968549

R.S. HEATING & BUILDING CO

EST. 1971



HEATING DIVISION:

Experienced Installers of condensing, combination and regular boilers. Systems fully guaranteed. Complete after sales service. Also Bathrooms, showers and small plumbing works.

BUILDING DIVISION:

Loft conversions, House renovations including general building, joinery, plastering, electrical decorating etc.



13 Overcroft Rise, Sheffield, S17 4AX

Tel:- 0114 236 4421

Reg. Office:- 62 Machon Bank, Sheffield, S7 1GP

Te:- 0114 2559425

Fax:- 0114 255 9431

Email: enquiries@rsheatingandbuilding.co.uk
 Web: <http://www.rsheatingandbuilding.co.uk>

Dronfield Landscapes

Gardens cleared and maintained, Lawns mowed, Turfing, Tree felling & pruning, Hedges trimmed & reduced, Pond maintenance, Fencing etc.

for free quotation call

Chris on: (0114) 2746158 Mobiles: 07976072785 or

Richard on: 07789497104

8am-6pm mon-fri

HazelBarrow Farm, Norton S8 8BA

Nigel Watson

Carpenter and Joiner

New Kitchens, replacement worktops, doors, locks, floors, architraves, skirting boards, stairs, stud walling, boxing off etc.

No job too small

For a reliable, quality service

Tel: 0114 236 4778

Mobile: 07971 528149



Got a computer?

Having Problems?

Is it running slow? Stops responding?
 Having problems running the latest games
 or applications? Broadband installation?

Give me a call!

I'm available for home visits at any time including evenings and weekends. I can also suggest upgrades to improve performance, or even build you a system to your specific requirements.

Tim Brown

Building,
 Installation,
 Upgrading and
 Troubleshooting
 Computer
 Systems
 Over 25 years
 professional
 experience

Phone: 0114 2472619 Fax: 0870 7060080

Mobile: 078 17464703 Email: service@timbrown.plus.com

Dronfield Landscapes

Logs and woodchippings
For Sale

Ring for details
Chris on 0114 2746158
Mobile 07976072785

Richard mobile
07789497104



Central Heating
Domestic Plumbing
Glazing, Double Glazing and Glass
House Maintenance
UPVC and Wood Windows & Doors
Mini Digger & Driver, Muck Shifts, Footings Etc.



TOTLEY PRIVATE HIRE

24HR TAXI SERVICE
ADVANCE BOOKINGS TAKEN
LOCAL • LONG DISTANCE • AIRPORT

Tel: 0114 283 9692
Mobile: 07974 355528

Domestic electrical work carried out by
City & Guilds and 'Part P' qualified

LADY ELECTRICIAN

- * Security lighting * Outside power for Christmas lights
- * House rewires * Replacement fuse boards
- * New sockets and lights * Telephone points

All work guaranteed and
fully insured

No job too small
For a free quote, without obligation



ring Mandy on 07788-544225



Tiling, Plastering, Plumbing & Complete Bathroom Fitting Service

Tel: 0114 274 6775
07738 688807

- ◆ Under Floor Heating
- ◆ All Aspects of Home Improvements & Maintenance Work Undertaken
- ◆ Competitive Prices
- ◆ NVQ Qualified
- ◆ No Job Too Small
- ◆ Fully Insured & Guaranteed

A1tilingandplastering.co.uk
33 Glen View Road, Greenhill, S8 7SF

Hypnotherapy

Weight, confidence, smoking, stress,
phobias, anxiety, panic, sleep, etc...

Call 235 1985 Totley

www.sheffieldhypnosis.co.uk



Paul Peace



The
British
Psychological
Society
Chartered Psychologist



Karen Bartle

Creating opportunities with disabled people.

Registered Charity No. 218186

Leonard Cheshire Disability

Leonard Cheshire Services in Offers choice & opportunity to people with disabilities. A Specialist Unit for the Younger Disabled. Residential & Respite Care - Single Rooms Day resources - Aromatherapy - Reflexology - Physiotherapy - Toning Tables.

Activities include: - Arts & Crafts - Computers - Cookery - Shopping Expeditions - Theatre Outings - Church. Further details can be obtained from - The Service Manager, Mickley Hall, Mickley Lane, Totley, Sheffield S17 4HE. Tel. 0114 236 9952 Fax. 0114 262 0234

The Care at Home Service supports disabled people who wish to remain in their own homes.

We provide flexible care packages from 1 hour to 24 hours meeting individual needs. The service operates throughout Sheffield.

Our service includes: - help with getting up and going to bed, dressing, washing, bathing, shopping, cooking, light household duties.

Further details from: - The Care at Home Manager Tel. 0114235 1400 Fax 0114 235 1499

John Heath & Sons

AN INDEPENDENT FAMILY FUNERAL BUSINESS

Sometime.....

You will probably have the responsibility of making funeral arrangements. No one looks forward to this responsibility, but the death of a family member or friend brings with it an obligation that must be met. There are people who can help you meet this responsibility. We have been helping people combine the different aspects of the funeral into a meaningful service for over 125 years.

Please Call Day Or Night

(0114) 272 2222

Head Office - Earsham Street

Also at Meadowhead, Ecclesall Rd,
Crookes and Stannington

www.johnheath.co.uk



Peter Godley Garden Design

Surveying, planning and contract management

Awards for Best in Show
Design and Quality Plant Selection
Large Gold Medals & Silver Medal Winners

Homesfield, Dronfield S18 7WJ
M: 07836 717859 T: 0114 2891365 F: 0114 2890737
Email: peter.godley@btconnect.com

TOTLEY & DISTRICT DIARY

MONDAYS	COFFEE MORNING , All Saints' Church Hall, 10am-noon TAI-CHI , United Reformed Church, Totley Brook Road, 11.30am-12.30pm ANTE NATAL PILATES , United Reformed Church, 6.30-7.30pm, Phone Emer Coffee 07792 422909 RAINBOWS and GUIDES , All Saints' Church Hall, 5.45pm-9pm
TUESDAYS	COFFEE MORNING , Totley Rise Methodist Church Hall, 10am-noon KEEP FIT & COFFEE , For the not-so-young, Bannerdale Centre, Carterknowle Road, 10.15am, Phone 258 5364 WOODSEATS ADVICE CENTRE . Drop in service, free, impartial, and confidential. TR Methodist Church, 10am-noon CRAFT GROUP , Totley Library, 2pm
WEDNESDAYS	COFFEE in the LIBRARY , 10am-11.30am TODDLER GROUP , 10am-11.30am, All Saints' Church Hall. Details tel. Andy Holmes 0114 236 2088 HEALTH WALKS , 10.30am, Totley Library foyer. Phone Sue, The Health Walk Ranger: 0114 283 9195 MODERN SEQUENCE DANCING , All Saints Church Hall, 8pm-10pm
THURSDAYS	CHAIROBICS , Totley Library, 2pm-3pm. £1 NCT COFFEE GROUP FOR DORE TOTLEY & BRADWAY , 10am-noon, For mums & babies/toddlers, meeting in various locations, Phone Lucy Street 07837 000405 or email: lucy@streetr.plus.com for further details PUSHCHAIR CLUB , Totley Rise Methodist Church Hall, 1.30pm-3pm. Tel. 236 3157 for further details PILATES CLASS , United Reformed Church, Totley Brook Road, 6.15pm-7.30pm, Phone Emer Coffee 07792 422909
FRIDAYS	PILATES , The Old School, Dore, 10.45-11.45am & 12-1pm. Phone Teresa Tinklin 07906 312372
SATURDAYS	MODERN SEQUENCE DANCING , All Saints Church Hall 2 nd . And 4 th . Saturdays 8pm-10pm

FEBRUARY 2011

SAT 5th SATURDAY NIGHT LIVE, Darren. S., Heatherfield Club. 8.30pm. Come & play Play Your Cards Right. Non-members welcome
SUN 6th CASTLETON FARMERS MARKET, the Village Hall, 10am-3pm
TUES 15th TOTLEY TOWNSWOMEN'S GUILD, 'Houses and Gardens of Derbyshire', Keith & Shirley Thomas Totley Rise Methodist Church Hall, 10am
THU 17th SHEFFIELD FARMERS MARKET, 9am-4.30pm, Fargate
SAT 19th SATURDAY NIGHT LIVE, Dave Johns, Heatherfield Club. 8.30pm. Come & play Play Your Cards Right. Non-members welcome
WED 23rd TOTLEY HISTORY GROUP, Totley Library, 7.30pm, Sharing our Research, all welcome

MARCH 2011

SAT 5th SATURDAY NIGHT LIVE, Viki France, Heatherfield Club. 8.30pm. Come & play Play Your Cards Right. Non-members welcome
SUN 6th CASTLETON FARMERS MARKET, the Village Hall, 10am-3pm
TUES 15th TOTLEY TOWNSWOMEN'S GUILD, AGM, Totley Rise Methodist Church Hall, 10am
SAT 19th SATURDAY NIGHT LIVE, Ginny Marie, Heatherfield Club. 8.30pm. Come & play Play Your Cards Right. Non-members welcome
WED 23rd TOTLEY HISTORY GROUP, Totley Library, 7.30pm, 'Why the T'allistone' - a peep into very old Sheffield, Majorie Dunn, all welcome
THU 24th SHEFFIELD FARMERS MARKET, 9am-4.30pm, Fargate

APRIL 2011

SAT 2nd SATURDAY NIGHT LIVE, Tony Christian, Heatherfield Club. 8.30pm. Come & play Play Your Cards Right. Non-members welcome
SUN 3rd CASTLETON FARMERS MARKET, the Village Hall, 10am-3pm
SAT 16th SATURDAY NIGHT LIVE, John Clifford, Heatherfield Club. 8.30pm. Come & play Play Your Cards Right. Non-members welcome
TUES 19th TOTLEY TOWNSWOMEN'S GUILD, 'An Elizabethan Wardrobe', Maureen Taylor, Totley Rise Methodist Church Hall, 10am
SAT 30th SATURDAY NIGHT LIVE, Vince Lee Gayle, Heatherfield Club. 8.30pm. Come & play Play Your Cards Right. Non-members welcome
THU 28th SHEFFIELD FARMERS MARKET, 9am-4.30pm, Fargate

TOTLEY INDEPENDENT FOR MARCH

The next issue of the Totley Independent will be available from the usual distribution points on

SATURDAY 5th March 2011

COPY CLOSE DATE for this issue
will be

SATURDAY 19th February 2011

Editor: **Ian Clarke**
 Email: editor@totley.org.uk
 Tel. No: **235 2526**

Advertising & Distribution:
John Perkinson
 Tel. No: **236 1601**
 Email: advertising@totley.org.uk

Items for publication may be left or sent to:
2, Main Avenue, Totley, Sheffield, S17 4FG or
Totley Library

PRINTED by STARPRINT

B. K. JEAVONS PAINTER & DECORATOR



**Interior
Exterior
Decorating
No job too
small.**

**86, WOLLATON ROAD
BRADWAY
SHEFFIELD, S17 4LG
Telephone 2350821**



601 Abbeydale Road, Sheffield 7. Fax: 0114 258 8599

DESIGN & PRINTING of

- **LETTERHEADS • BUSINESS CARDS •**
- **BOOKLETS & PADS •**
- **INVOICES • LEAFLETS •**
- **CARBONLESS SETS • BROCHURES •**
- **RAFFLE TICKETS •**
- **WEDDING STATIONERY •**
- **ENVELOPES & POSTCARDS •**

**SPECIALISTS IN THERMOGRAPHY
FOIL BLOCKING AND ENCAPSULATION**

**0114 258 0707
For a Quick Quotation**