

# TOTLEY INDEPENDENT

PUBLISHED CONTINUOUSLY SINCE 1977

[www.totleyindependent.co.uk](http://www.totleyindependent.co.uk)

OCTOBER 2011

No. 347

20p.



## TOTLEY RISE

What date? A Ford Zephyr in the foreground and Morris Minor parked beyond the phone box put this in the early 60's. Does anyone recognise their car?

We wondered whether the aerial shot in the September 2011, taken of further up Baslow Road, could have been earlier than 1940. Well it was! Detective work by Duncan Froggatt reveals that it was between 1931-35. How does he know?, well it was after the Co-op was built(1931) but before the shops at the top of Main Avenue (1935).

## TOTLEY SHOW - SEPTEMBER 2011

Congratulations to Les and Dorothy Firth, their committee and all the volunteers for all their hard work and what proved to be a wonderful Totley Show.

Despite mixed weather on the day it was marvellous to see so many people turn up to give their support. The atmosphere in the school dining room was superb as people bought food and drink and stood or sat chatting with old friends, new friends, helpers, stall holders etc.....a community coming together which is what this whole event is about.....absolutely brilliant!

It was great to see visitors buzzing around the displays and stalls inside and outside and to hear the Escafeld Brass Band playing away to the delight of everyone and kicking off Totley Music Festival week.

It was a real privilege to be there and see all the entries for handicrafts, art, photography, woodwork, fresh produce plus the domestic and floral sections. The children's exhibits were terrific and as the Show's Honorary President, Tom Steel, said their wobbly jellies had to be seen to be believed.

So much to see, so much to do.....an excellent day culminating in the prize draw and auction. It certainly was a very special day for the community of Totley.

Chris Measures

## TOTLEY SHOW RESULTS IN THIS ISSUE

Full details inside

## The Green Belt Debate

Land to the rear of the Stocks Green Drive Estate, currently designated to be returned to Green Belt, is once again the subject of controversy following the submission of a planning application to erect 2 large executive style houses and a triple garage block on the elevated southern section.

Unfortunately, due to a mapping error, this land is not currently Green Belt. The existing housing development was not built quite as far out as planned, leaving a strip of green agricultural land vulnerable to development between it and the Green Belt. This strip is known locally as the Totley Buffer Zone. Part of this strip is now the subject of this application.

In 1998 Sheffield's Unitary Development Plan failed to return the Buffer Zone to Green Belt on a technicality, leaving it vulnerable to development rather than its intended purpose to act as a natural break between urban and rural environments. Sheffield City Council planned to return the zone to the Green Belt. This current planning application (submitted before Sheffield's Sheffield Development Framework comes into force and replaces the UPD) may not only be unwelcome to many residents and visitors, but may also compromise their restored Green Belt line.

There was a requirement on the developer of the current houses to plant a screen on the Buffer Zone after construction. This was supported - and indeed asked for - by the Peak District National Park Authority who expressed concern about the setting and views of the current houses from the National Park. However, Sheffield City Council failed to enforce the requirement.

This current controversial application is opposed by local residents, the Council for the Protection of Rural England (CPRE) and Sheffield and Peak Against City Encroachment (SPACE). It is listed as being subject to a likely delegated decision by a single planning officer and support/objections are invited by 28th September. However, representations are being made to extend the time for comments and to have the application heard by full planning committee rather than by a single planning officer.

The application and plans ref 11/02342/FUL can be viewed and commented on by viewing it on Sheffield City Councils' website at:

[www.sheffield.gov.uk/planning-and-city-development](http://www.sheffield.gov.uk/planning-and-city-development) and following the links to Applications, View and Comment, Planning Applications Online and then Applications Search - or by visiting Howden House on Union Street in Sheffield.

Even though the official time for comments may have passed by the time the **Totley Independent** is on the streets, we think there is a very strong possibility you may still be able to comment on this application. But quickly please!

Also, the Government's Draft National Planning Framework is worrying many people, even Tory backbenchers! Though Green Belts are supposedly protected, there is no doubt that they will be more vulnerable in the longer term - as well as green sites without special protection. To read more about this and to comment please visit either the CPRE or the National Trust websites. This too is urgent.

Sally Goldsmith, SPACE (Sheffield and Peak Against City Encroachment), email: [sheffieldspace@gmail.com](mailto:sheffieldspace@gmail.com)

## South Yorkshire Police Update

Hi all, my name is Kevin Marsh I am the new Police Constable for the Dore and Totley area. Along with Police Constable Mark Wadsworth and Police Community Support Officer Katie Gavin who also work the Dore and Totley area. For the past few years I



have been working as a NPG (Neighbourhood Policing Officer) Officer in the West Sector of the city. I now work on The SNT (Safer Neighbourhood Teams) which consist of police officers, police community support officers (PCSOs), special constables and local authority Neighbourhood Wardens/

Ambassadors and managers. Some SNTs have Children and Young Persons Officers and Crime and Disorder Reduction staff.

SNTs are dedicated teams who are visible, accessible and familiar to communities. They reduce local crime, bring more offenders to justice, and address quality of life issues through a problem-solving approach with communities.

SNT officers and response officers are all police officers with the same powers. Response officers deal with 24 hour emergency calls that need to be dealt with quickly. SNT officers work with communities, together with partner agencies, to provide high visibility patrols and address issues that concern local people.

Here are my contact details Office: 01142 202020, Email: [kevin.marsh@southyorks.pnn.police.uk](mailto:kevin.marsh@southyorks.pnn.police.uk)

### New Police Box-Green Oak Park, Totley

We have a new Police Box in the Totley area, the box is located by the bowling green in Green Oak Park, Totley. The Police box is for the use of Police officers as a rest stop and is not a Police Station that is open all the time. Although when the box is open, feel free to pop in for a chat. We are holding some Police Surgeries here every Thursday at various times and dates below:

Thursday 30th Sept - 7pm till 8pm

Thursday 6th Oct - 10am till 11am

Thursday 13th Oct - 7pm till 8pm

Thursday 20th Oct - 9am till 10am

More dates to follow after Halloween and Bonfire night.

### Scrapper Vehicles In the Dore and Totley Area

We seem to be having ongoing problems with Scrap vans in the Dore and Totley area. Please if you have any sightings of any suspicious vehicles please take down the **time, date, vehicle reg, make and colour** and pass this information back to us at [kevin.marsh@southyorks.pnn.police.uk](mailto:kevin.marsh@southyorks.pnn.police.uk) or contact us by phone on 01142 964803 and leave a message. Thank You for all your help

## Computers and Internet For Beginners Made Easy

Local tutor offering one -to-one training and support using your computer, in your own home, at your own pace. Learn about surfing the internet, order goods online, Skype, or to use your mobile phone. One off or ongoing classes.

Vouchers available.

If you don't have time to teach your relatives, this may be a useful present.

Tel Anne on 0114 235 3297



## **Transport 17**

We are back in full swing now that the August holidays are over. We would like to give a special thanks to Eliot Spencer, a young man (yes young man) who came to volunteer with us just after Easter but is about to leave us to go and study to be a paramedic. He has been a great help and has been very popular with everyone. We wish him well and hope that maybe there will be some other young people who may like to follow in his footsteps.

Since our last missive we have also had 2 new recruits to volunteer as driver/escorts. We are still in need of some more escorts and hope that there are people out there who would be willing to come and help us. Our telephone number is 2362962, you need to speak to Michael Finn or John Savournin.

We are holding our General Meeting on 24th October at 7.00 pm (for shareholders) and our Christmas Coffee Morning is being held on Saturday 19th November - 10.00 - 12 noon (early this year in hope of beating the weather!!!). Everyone is welcome, tea, coffee and mince pies will be available on the day. If you have any unwanted gifts or anything that you think would be suitable for us to sell at our Coffee Morning please feel free to leave them at 172 Baslow Rd.

I am also pleased to report that Margaret and Danny Barlow are settling in well at their new home and have already spent their gardening vouchers in their new garden.

Felicity Revill  
Chairman

## **TOTLEY RESIDENTS' ASSOCIATION**



### **BARN DANCE**

With  
PIE & PEA SUPPER

Bring your own alcohol or soft drinks,  
tea and coffee will be available.

**Saturday, 15<sup>th</sup> October 2011**  
**6.30p.m. - 11.00p.m.**

Live Music from "COMINGLE"  
RAFFLE

**Adults: £7.50. Under 18's and senior  
citizens: £4.00**

The Top Barn, Totley Hall Farm, Totley Hall  
Lane.

Tickets on sale from 23<sup>rd</sup> September at Totley  
Deli Totley Rise, The Ironing Parlour Baslow  
Road or Liberty Foods Main Avenue.

## **New Sports Pavilion for Totley Bents**

Totley Sports and Social Club (TSSC), which includes the Totley running, cricket and football clubs, has secured funding for the construction of a new sports pavilion to replace the old green hut at the top of the Totley Bents sports field opposite the Cricket Inn. The new pavilion has been secured by TSSC fundraising together with grants from a wide range of funding bodies which include Sheffield City Council, the Sheffield Trust, the Community Assembly, The Church Burgesses Trust, the JG Graves Trust, Freshgate Trust, the You Choose grant scheme and the Football Foundation. Construction of the new pavilion will commence in the coming weeks and it is hoped that it will be complete before Christmas, and ready for use in 2012. *(ED: late update from SCC indicates work will commence on site Mon 26th Sept with a planned completion date of Mon 12th Dec 2011 [weather permitting]. The delivery of the building units is planned for w/c Mon 24th Oct dependent upon good progress with the foundation works.)*

The pavilion will have two changing rooms with showers and toilets, together with an open plan room with kitchenette. Its' use will be managed by TSSC and will be available for hire by other users including local schools, sports groups and community groups. Details of how to book will be publicised in due course but in the meantime we are focussing on getting the pavilion built and ready for use next year. We have been helped by many organisations and individuals who have put in considerable effort to make this happen and we would like to extend our warm thanks to all those who have supported this initiative, including particularly the South West Community Assembly, Sheffield City Council and all the club members who have worked tirelessly to ensure sporting activities continue to be played at Totley Bents.

Clive Waddington  
Chairman Totley Athletic Club

## **TRA COMPETITION**

The TRA will be launching a Competition in October. We need a new logo for our posters, website and Facebook page.

We are asking the children of Totley to start drawing and we will be sending details to our local schools later this month.

Heather Moran. Secretary.

## **TRA Update**

Unfortunately there is no update this month due to illness. We wish Kathryn a speedy recovery.

## **Councillor Surgeries**

### **Liberal Democrats:**

2nd Monday in the month 6.00-7.00 p.m., Totley Library, Baslow Road and 2nd Saturday in the month from 10.30 a.m. to 12.00 noon, Dore Old School Hall, Savage Lane, Dore Contact details:

Keith Hill 235 2289 Email: keith.hill@sheffield.gov.uk,

Colin Ross 235 1948 Email: colin.ross@sheffield.gov.uk

Joe Otten Email: joe.otten@sheffield.gov.uk

**Totley Independent Website:-**  
**[www.totleyindependent.co.uk](http://www.totleyindependent.co.uk)**

## Farming Scene

### Autumn, Harvest, Wasps and Barn Dance.

We seem to be entering autumn very early this year. Here we are mid-way through September and already we are having darker mornings and nights, cold blustery gales and night frosts. Many of the trees have changed colour or are even shedding some of their leaves! This is probably due to the exceptionally long spells of dry weather over the summer that has denied the trees of moisture they need to keep their leaves nice and green. The grass certainly has not been growing much over the last month on the farm. Where the soil is thinner on the ridges or under the trees the grass has "burnt off", that is to say gone brown and shrivelled up, looking very much as if it was dead. But, hey presto, since the cool wet weather arrived it has all come back to life and looks fresh and green again.

There has been much speculation about the amount of grain that would be harvested this year, given the dryness of the ground since the spring. Surprisingly, the cereal harvest yields have only been down around 10% on the 5 year average whilst Oilseed Rape has excelled itself by producing record yields. Potatoes also seem to have done well as currently there is an oversupply in the market and prices are substantially down on last year's. This glut is probably partly due to the fact that most potato growers now irrigate their crops during spells of dry weather. The old adage that cereal crops, most crops in fact, do better in a sunny dry year rather than in a wet one, has been proved correct once again. This is due to the plants having more opportunities to synthesise sunlight into energy/sugar/carbohydrates for use in feeding the grains or root crops.

The badgers seem to have been struggling to find food during the summer as well, they have taken to digging out wasps nests in order to eat the grubs and eggs inside it. The must be a high risk strategy!! They have also been digging out bumble bee colonies from under hedge bottom banks. I am quite happy for them to destroy wasps nests but reducing the bumble bee population is a real shame.

We have held quite a few events in our Top Barn this summer. We have hosted 2 wedding receptions, 2 after reception evening barn dances, a sheep judging day and a church weekend away. I think we might try to host some farmers' markets or car boot sales next year to give us a really diverse diversification enterprise!

The next function will be the Community Barn Dance on 15 October. This is being arranged by Totley Residents Association and will feature a live band plus a pie and pea supper supplied by Liberty Foods. Good music, good company, and good food, what more could you ask for on a Saturday evening. All ages welcome. Do come, even if you only sit on the side and have a chat, whilst other people dance the night away. Disabled parking and toilets are on site and tickets will be available from various Totley shops.

Edwin Pocock

LEONARD CHESHIRE DISABILITY

MICKLEY HALL

SATURDAY OCTOBER 22<sup>ND</sup> 2PM-4PM

## AUTUMN CRAFT FAYRE



ANNUAL CRAFT FAYRE

JAMS, CHUTNEY, HANDICRAFTS, CAKES AND MUCH MORE

FREE ENTRY

## FRIENDS OF GILLFIELD WOOD

### BAT SURVEY and MORE

It proved to be an ideal night to undertake a Bat Survey on Thursday September 15th. The evening was still reasonably warm at 7.30 pm, the sky was clear and there was no wind.

A small group of us gathered at 7.30 pm at the bus terminus on Baslow Road with torches and bat detectors at the ready. Derek Whiteley, General Secretary of Sorby Natural History Society, was on hand to give his expert advice on the bats we were likely to encounter. He was also able to identify, with the help of the sound detectors, different species of bat from the variety of ultrasonic calls individuals emit.

Although some of us had seen bats before in and around Gillfield Wood nothing had quite prepared us for this particular evening, it was amazing. We immediately picked up the calls of a Pipistrelle Bat as we entered the wood and then odd ones of the same species as we walked through the wood but it was when we got half way through the wood and stood on the edge of the wood, Totley side, we had Pipistrelles and Soprano Pipistrelles whizzing and feeding over our heads. More were plotted as we continued our walk through the wood and then we encountered a third species. It was a Whiskered Bat which typically flies at head height over streams and so it was we recorded several more of the same as we wound our way along Totley Brook.

We then walked footpaths and the edges of fields recording even more bats. Eventually we ended our study work opposite Dysons on Baslow Road at 10.30pm only to see and record a fourth species, a Leisler's Bat flying under the factory's security lights.

It was a fascinating and exciting evening and proved emphatically what important fields, hedgerows, trees and woodland we have on our doorsteps. We also know that Noctule Bats have recently been recorded near to our wood so our work on bats within our research area has only just begun.

**NEXT SURVEYS:** to be carried out over the weekend October 22nd and 23rd. These will relate to Mammals and Invertebrates. If you would like to join us please contact Dave Gash on 0114 262 0564 (or daveygash@hotmail.com) for more details.

**NEXT INDOOR MEETINGS:** at Totley Library, usually held on the first Tuesday in the month. They start at 7pm and are set for October 4th and November 1st, you are very welcome to come along and join us.

**CONSERVATION WORKDAYS:** if you are interested in helping us carry out such work in Gillfield Wood with a Ranger from Sheffield City Council please contact Dave Gash for details.

Chris Measures

# Totley Scouts

As I am currently the Chairman of the 1st Totley Scout Group, I have read with great interest the articles in the **Totley Independent** over the last few months. It was also a subject of discussion at our September committee meeting.

We have a trek cart as mentioned by Jim Whyte, so it may even be the same one. It has seen better times but we intend to have a proper look at it and refurbish it so that we can hopefully use it again. Probably to help with fund-raising rather than its rather exhausting original use!

We also have many old record books so we may well have the one which Jo Rundle mentions. We will be having a look. Maybe one day someone will write an official history of Scouting in Totley. I understand it may go back as far as 1915.

Back to the present day though. The scout group is going from strength to strength, with ever rising numbers. We now have nearly 90 children (that is boys and girls) being inspired with exciting activities every week. They are spread more or less evenly between Beavers, Cubs and Scouts, each meeting on different nights of the week. The ages range from 6 to 16. Activities encompass many things such as learning to tie knots, visits to Fire stations and Football clubs, to hiking, dam building and of course camping and camp cooking. The scouts even get to practise archery and shooting.

For the first time in many years the numbers of Scouts exceed the numbers of Beavers or Cubs. This is due to the changing demographics in Totley. When my eldest was born nearly 12 years ago there were not many children in Totley. Indeed there had been talk of closing one of the primary schools. The demographics have changed and both primary schools are full, and that of course has meant more children around who want to enjoy a scouting life. That is great news for scouting in Totley but it also brings with it many challenges. I should also mention that the United Reformed Church on Totley Brook Road also hosts a scout group but at present they only have a Beaver Scout colony. Most of their Beavers move on to the 1st Totley Scout Group when they become Cubs and subsequently Scouts.

Whilst it is fantastic to have all these children in scouting we cannot do it without adults either as occasional helpers or regular leaders. In order to cope effectively we need to start a second Cub pack which would meet on a different night. So if you are interested and would like to find out how you could help please contact John Smith, who is the Group Scout Leader, on 07507 560287 or email John at [gs1215thtotley@gmail.com](mailto:gs1215thtotley@gmail.com). We are keen to hear from anyone, as long as they are over 18, who would like to help in any of the sections, not just cubs. After all if numbers keep rising, as we expect and would like, we will need an extra Beaver colony and an extra Scout troop too.

We wish the Totley Scouts to become much more visible and part of the community than they have been in the past. And of course rising numbers makes that job easier. We have already helped out in a small way with Totley Open Gardens. Unfortunately it clashed with a Scout camp. We shall make sure next year that we have the date already in our diary so that we can help out in a bigger way.

This article is part of that process and we expect to have articles in the **Totley Independent** every month. In the future we will tell you about activities we have done as well as our plans for the future and other ways in which you can help us achieve our goals.

Although we have many small individual goals they all really lead to wanting to continue to inspire children with exciting activities each week through Scouting.

Richard Frost

Chairman 215th (1st Totley) Scout Group

Email: [TotleyChair@aol.com](mailto:TotleyChair@aol.com)

## Scouts

Jo Rundle said "no scouting was done until 1944" I'm afraid she is wrong. As Jim Whyte points out the trek cart trip to Hathersage was done in 1942 (he didn't say the year). We also went to the same farm in 1943 and 1944.

In 1944 someone came to the camp and told us about D-Day. Dungworths were the farmers at Callow farm (grid ref 21818 / 80656 OS map). We were in the bottom field in 42 but in 43 and 44 we were in the top field. In 43 it rained and we were woken by Bill Rose saying "I'm wet". Great times.

Also in the September's Independent, the front cover shows the field before the Primary school was built.

The scouts played football and cricket in this field.

Just remembered: John Tinsdale, John Wood, John Leeson and Edmund Short were some of the older scouts.

Frank Young

## Ward Forum

### Traffic Focus Group

The group made a presentation at the Ward Forum on September 7th. Alan Kewley outlined the European & the British guidance, on 20 MPH zones, to the forum, with the information that the City Council had requested Community Assemblies to consult in 2010. We were not aware of any consultation having taken place, so we wanted to move the issue forward on behalf of each community area in the Ward. I gave a visual presentation of ideas which Neil Bunting & I had for the Totley Area. We had two maps, one showing the essential areas for speed control, & the second map was to show preferential areas. A representative from The Highways service was present, but could not give us any definitive costs. We have requested those figures to enable us to cost up the schemes.

The Chair of TRA is in support of the work which we are doing & will be taking it to the committee on Thursday 22nd September for ratification. In the meantime, Alan Kewley has attended the Highways Committee meeting, on our behalf, & Cllr. Keith Hill has called a meeting of Dore Village Society on Monday 19th, to discuss it further. At least three areas of Sheffield have schemes in place & we are going to see an established area in Barnsley, hopefully discussing the benefits & disadvantages with their engineer.

We intend to display the maps for Totley, in the library, when we have further information.

Roger Hart

# King Egbert Update

In August, King Egbert celebrated an outstanding year for exam results

At GCSE, **86%** of our students achieved 5 or more A\* - C grades, with **76%** achieving the national benchmark standard of 5 or more A\* - C grades including English and maths

**50%** of our students achieved 3 or more A\* - A grades

King Egbert was the second highest performing school in the city with our percentage of GCSE grades at A\* and A (50%) being the best in the city.

*All our Y11 students left with nationally recognised formal qualifications*

## A Level

The overall pass rate was **99.4%**

Of all the entries:

**30%** were at A\* or A

**52%** were at A\* to B

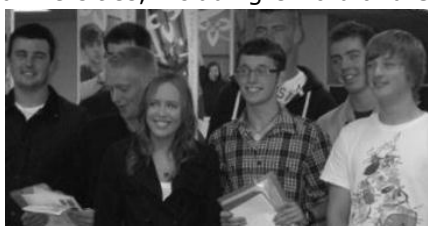
**18%** of our students gained A\* and A grades in all their subjects.

## BTEC Level 3

**100%** pass rate

(**77%** with Distinction)

These achievements enabled the large majority of our students to gain places at one of their chosen universities, including Oxford and Cambridge.



*We wish to congratulate all our students on their excellent achievements and we wish them every success in the*

*next stage of their lives whether it is future studies, training or employment.*

## A Midsummer Night's Dream

Students from King Egbert School will perform at The Crucible in The Shakespeare Schools Festival on Wednesday 5th October in A Midsummer Night's Dream. Tickets are available now from Sheffield Theatres.

We will also be performing this in school on Monday 3rd October and Tuesday 4th October and tickets will go on sale for this in September from the School Office.

## 'Virus' strikes King Egbert

Y8 students took part in a simulation of an outbreak of a disease. One of their science topics concerns aspects of diseases - how they are transmitted and how the body reacts to them.

Ten students were selected at random and given 'infection' cards. They had to pass these on to other students (and staff!) that they came into contact with. A 'Medical Centre' was opened and their details entered into a sophisticated computer programme which calculated whether they survived' (and so became immune) or 'died'.

By logging all the students who received an infection card over the week the spread of the disease was tracked. During the week, 83 students were infected. 45 students survived their infection but sadly 38 students 'died'.

Happily, the virus seemed to disappear as quickly as it appeared.

## Deputy PM visit

Deputy Prime Minister Nick Clegg MP visited the King Egbert School for a Question time



session with the 6th Form. He was asked a number of challenging questions about school funding, university fees, the economy, Libya, the AV referendum and the politics of the coalition agreement. He commented afterwards about the sharp and intelligent questions and the level of interest shown by the students in politics and current affairs.

## KES in the community

King Egbert School students were invited to exhibit and talk to the local community about the wonderful work they carry out in school at a special road show. Many of the local residents had generations of families, many of who currently attend KES. Senior residents in the Dore and Totley area attended the event at Totley Rise Methodist Church to learn about what services are available to assist their health and wellbeing. The event showcased 18 local activities and organisations, including Shelter, Totley Residents Association, the Safer Neighbourhood team, the Police, Activity Sheffield and the NHS.

## National Youth Theatre place for Sam

Congratulations to King Egbert student Sam Henderson who has won a place with the National



Youth Theatre in London. Sam is in Y10, and is taking Drama as one of his GCSEs. He has taken leading roles in school productions, most recently playing Bob Cratchit in A Christmas Carol. Last year he performed at The Crucible, playing Sir Antony Sher's son in Enemy of The People.

Sam says he is "really excited" at joining the National Youth Theatre. "It's a brilliant opportunity for me and I fully intend to make the most of it."

## Paired Reading over the year

Twenty eight of the 6th form students have been working with Y7 students on our Paired Reading Scheme. The pairs meet every week to hear each other read and to talk about school work. This provides encouragement and help for the Y7s and an opportunity for the 6th Formers to get involved with supporting younger members of the school.

In May there was a celebration event where certificates and prizes were awarded for participation and progress in reading.

Tim Eldridge, Deputy Headteacher

## One World Week

Wednesday, 19 October 2011 at 7.30pm at Totley Rise Methodist Church  
Joint meeting of the Wednesday Friendship and the United Nations Association to mark One World Week.

Amy Worrall will speak on "Food Sovereignty - Sustainable Food Security" and will report on her visit to Costa Rica in August 2011.



## Zumba® Comes to Totley!!

Zumba® the Latin inspired cardio exercise has arrived in Totley!! Christine Ventour from 'MoVe' a creative partnership with

Ivan Moore is a licensed Zumba® and Zumba® Gold instructor. Christine gave us an inside view of the positive impact of participating in Zumba®.



### What is Zumba®?

Zumba® is a Latin inspired dance exercise and fitness programme that combines dance-like movements with cardio, endurance and toning fitness, all set to the most exciting of latin rhythms.

### About you:

You don't have to be a dancer or Zumba® expert. As long as you want to enjoy the various benefits of Zumba® it is a fun way to develop fitness, lose weight and become better toned and more supple. There are many benefits of choosing Zumba® as a regular fitness programme, and here are a few: It provides a low impact fitness activity.

Even active, fit people will eventually develop small injuries when they constantly engage in high impact fitness activities such as running, circuit training and many sports. At Zumba® classes, I provide great exercise that minimizes impact, so minimizing the possibility of injury.

### It is fun.

So much so that you don't realize how hard you are working out. I offer an 'intermittent' programme that brings your heart rate up for a while and then lets you recover - briefly - before working hard again. And the music, those Latin and international rhythms, just drive you on and on and on.....

### Zumba® Gold

If you are new to exercise, are a senior member of the community and you are interested in introducing some easier exercise you will be interested in Zumba® Gold. As a licensed Zumba® Gold instructor I'm eager to ensure that you have the opportunity to participate. If you are interested in attending Zumba® Gold sessions in Totley please contact me and I will do my best to organise sessions for you as quickly as possible.

### When and where are sessions held?

Sessions are delivered at All Saints' Totley Church Hall, Totley Hall Lane at the following times:

Monday: 12.30pm – 1.30pm

Tuesday: 12.30pm – 1.30pm

Thursday: 11.00am – 12.00pm

To find out more about me and Zumba® please my Zumba® profile at:

[http://www.zumba.com/en-](http://www.zumba.com/en-US/profiles/232981/christine-ventour)

[US/profiles/232981/christine-ventour](http://www.zumba.com/en-US/profiles/232981/christine-ventour)

I look forward to welcoming you to my sessions.

Christine Ventour

MoVe

T: 0788 9797 827

E: [christine.moveonline@live.co.uk](mailto:christine.moveonline@live.co.uk)

W: [www.imoveumove.co.uk](http://www.imoveumove.co.uk)

## THE SPOKEN WORD

"I do wish they wouldn't say that" commented my wife as we chewed our toast and listened to the "Today" programme on the radio. This elicited no more than a grunt in reply as I had also squirmed internally over the same point.

My last English lessons were as a school boy in the 1930s, though my wife's were a few years later. What had upset us both was hearing some politician pontificating his view along the lines of "different to the last lot because of the mess they left". Our joint distress had nothing to do with the content of the comment or the point scoring infighting - it was the use of "different TO" instead of "different FROM". In the same vein two other comments which cause a shudder, are the use of "LESS than" instead of "FEWER than" when talking of numbers and the repeated use of ABSOLUTELY in phrases such as "you are absolutely correct". It is almost as annoying as the 'teenage use of LIKE in almost all their peer conversation.

I know it is irrational to let these points annoy us. I am aware that language is continually changing. Otherwise we would still be speaking like our Anglo-Saxon or Norman antecedents or even grunting like the cave dwelling ancestors.

As usual I began to muse on why some school lessons made such an impression they stuck with me through 75 years or so and others did not. I cannot remember even bits of Caesars Gallic Wars from the Latin lessons even though the master frequently tried literally to knock it into my head with his knuckle. I cannot remember the plot of Shakespeare's Henry IV, but can still recite the first four lines of the Prologue to The Canterbury Tales in the supposed Chaucerian speech. It was delivered to us by the headmaster of the Junior School, a large imposing man who strode about the front of the class, with his black gown flowing out behind as though trying to keep up with him. Being a scholarship boy I did not have him for lessons until the sixth form. In my mature years I have wondered how authentic the Chaucer speech was - to the best of my knowledge no recordings were made at the time!

I must correct any impression I have given of boasting as a mediaeval scholar - any subsequent reading of the Canterbury Tales was Nevil Coghill's modern English translation.

Another aspect of language which all readers will be aware of is accent. I have lived all my life in South Yorkshire. No one hearing me speak would think I came from Liverpool or Birmingham or any posh areas in the south. I have no doubt this stems from my upbringing and, had I been adopted into a family from one of these areas, my speech would have been different. However, I still have a difficulty. Whenever I hear people from different parts of the vast area of India speaking English, they all sound the same to me. Ah well, there is light on the horizon. One of our granddaughters is starting university this year- her chosen study is English and Linguistics. In the past she has put us right on computer problems so here's hoping.

Don Ashford

## Totley All Saints Re-Union

At The Cross Scythes Hotel On Monday 24th October from 7-30pm onwards. For pupils who left around the late 1940s to mid-1950s. We look forward to seeing as many old pupils as possible

# TOTLEY SHOW RESULTS September 2011

**Best in Show Produce:-Tom Steel**

**Best in Show other:- John Perrott**

**HANDICRAFTS. Best of Class:- Mary Andrews**

	<b>FIRST</b>	<b>SECOND</b>	<b>THIRD</b>
1. Hand Knitted Garment	C.Shimmel	J.Gilligan	S. Williams
2. Decorative Cushion	C. Wigglesworth	J.Gilligan	
3. Soft Toys	J.Gilligan	J.Gilligan	J.Gilligan
4. Tapestry	H.Corbey		
5. Cross Stitch	M.Andrews	E.Ogley	J.Rose
6. Collage, any medium	A.Hart		
7. Greeting Cards	A.Hart	C.Rose	A.Blackwell

**DOMESTIC SECTION. Best of Class:- S.Doyle**

	<b>FIRST</b>	<b>SECOND</b>	<b>THIRD</b>
8. Victoria Sandwich	B.O'Connor	D.Firth	E.Ogley
9. Dundee Cake	D.Froggatt	T.Steel	V.Loft
10. Carrot Cake	T.Steel	S.Doyle	L.Liddle
11. 5 Biscuits.	S.Doyle	B.O'Connor	C.Scott
12. 3 Scones	L.Liddle	A.Mayland	V.Loft
13. Apple Pie	D.Scotten		
14. Jam	D.Froggatt	J.Gilligan	R.Newman
15. Lemon Curd	S.Goldie	C.Steel	E.Ogden
16. Marmalade	S.Gray		
17. Chutney	J.Robson	D.Froggatt	C.Goldie

**FLORAL SECTION. Best of Class:- S.Hammond**

	<b>FIRST</b>	<b>SECOND</b>	<b>THIRD</b>
18. Table Dec. Fresh to 6"	S.Hammond	M.Holme	L.Liddle
19. Table Dec. Fresh over 6"	S.Hammond	M.Holme	B.Warwick
20. Table Dec. Artificial	L.Liddle		
21. Cut Flowers 3	P.Perkinton	P.Perkinton	P.Perkinton
22. House Plant up to 6"	E.Ogley		
23. House Plant 7" to 12"	R.Rawlings	A.Critchley	R.Rawlings

**FRESH PRODUCE. Best of Class:- T.Steel**

	<b>FIRST</b>	<b>SECOND</b>	<b>THIRD</b>
24. 4 Eating Apples	J.Hammond	J.Burns	H.Long
25. 4 Cooking Apples	T.Steel	J.Burns	H.Mill
26. 8 Blackberries	H.Liddle	H.Liddle	A.Miller
27. 4 Matching Potatoes	O.Walker	E.Walker	
28. 3 Matching Leeks	T.Steel		
29. 3 Matching Onions	T.Steel	School Gardening Club	A.Miller
30. 5 Matching Runner Beans	E.Ogley	D.O'Connor	C.Wigglesworth
31. 5 Tomatoes	T.Steel	R.Farnsworth	T.Steel
32. 1 Cucumber	T. Steel		
33. 3 Courgettes	C.Caroe		
34. Largest Onion	T.Steel		
35. Heaviest Marrow	T.Steel		
36. Longest Runner Bean	A.Miller	D.O'Connor	School Gardening Club
37. 3 Eggs	L.Howe	J.Elliott	R.Newman

**ART. Best of Class :- A.Hart**

	<b>FIRST</b>	<b>SECOND</b>	<b>THIRD</b>
38. Oil Acrylic Painting	R.Moffat	I.Hastings	M.Staples
39. Water Colour	I.Hastings	D.Scotton	A.Harpham
40. Pen & Ink Sketch	J.Woolridge	S. Hammond	B.Mettam
41. Pencil Sketch	D.Scotton		
42. OPEN Multi Media	M.Staples	M.Staples	D.Scotten
44. Reclaimed Art, Sculpture	A.Hart	R.Sable	

**PHOTOGRAPHY. Best of Class:- H.Long**

	<b>FIRST</b>	<b>SECOND</b>	<b>THIRD</b>
46. Colour	H.Long	T.Steel	M.Evans
46. Black and White	M.Evans	M.Evans	A.Harpham
48. Computer Print	A.Harpham		
49. Totally Totley	D.Firth	T.Steel	B.Mettam



**WOODWORK. Best of Class:- J.Perrott**

	<b>FIRST</b>	<b>SECOND</b>	<b>THIRD</b>
50. Wood Turning	D.Andrews	A.Rose	M.Harpham
51. Small Furniture			
52. Wood Sculpture	J.Perrott	R.Howd	M.Loft

**CHILDRENS SECTION. Best in Class:- Alex Buxton ( Up to Age 8) Elizabeth Mills (Ages 9 to 14.)**

	<b>FIRST</b>	<b>SECOND</b>	<b>THIRD</b>
53. Animal Veg. Up to 7yrs.	A. & J Buxton	S. Taylor	D.Caroe
54. Miniature Garden 8 to 12	A. Scott		
55. Computer Art, up to 8.			
56. Computer Art 9 to 14	E. Mill		
57. 3 Decorative Buns	E. Caroe	E.Mill	E.Mill
58. Wobbly Wobbly Jelly	E.Mill	H. Mill	E Wallker
59. Flowers in an Egg Cup	E.Mill	E.Mill	E.Mill
60. Painting under 5yrs.	R.Lehane	P.Taylor	S.Taylor
61. Painting 6 to 11	E. Hobton	D.Caroe	O.Walker
62. Painting 12 to 14	P.Rose	P.Rose	
63. Lego Model 5 to 8 yrs.	A. Buxton	D.& E Caroe	J.Buxton
64. Lego Model 9 to 14 yrs.	K. Whyte	D. Evans	O. Walker
65. Colour Photo	B.Collett	O. Walker	H.Mill

**Guess the Weight** of the cake was won by Alex Mayland at a guess of 6lb. 5ozs. (**Actual Weight 6lb. 5ozs.**)

The Totley Show Committee would like to say a big thank you to our Sponsors for the 2011 show.

**To following for sponsoring the Class prizes:-**

Totley Rise Methodist church, PHFS Wealth Management, The Cross Scythes, Totley Hall Farm - Jenny and Edwin Pocock, Margaret and Danny Barlow, Mary Hanson, Christine and Tom Steel, Beth Booth, Mr. & Mrs. M Graves, Avril Critchley, Gill Warburton, Pat Parkin, A & M Harpan, B.Hicks, Janet Dean, Ann & Alan Lee, Sue and Andrew Bridgens, Alan Miller

**Many thanks also to our local businesses for sponsoring the Raffle:-**

Iron Parlour, Totley Rise Post Office, Totley Rise Newsagents, Totley Pets and Whiskers, Totley Flowers and Gifts, Martin Scrivens, Mr. Singh - Totley Pharmacy, Baslow Rd, Totley Deli, Luxury Gap The Abbey Friar, Totley Rise, Master Chef Delicatessen, Totley Co-op, Seasons

Thanks also to Starprint for the Programmes

Totley All Saints Church for the entry forms and the Totley Residents association.

And finally to all the team for helping and supporting the Show.

The committee are thankful also to all our contestants who exhibited over 300 items and to all the 200 or more people who came along to the Totley Show and made it a very successful event.

See you all next year.

*Les and Dorothy Firth*

Mark and Sally Fletcher invite you to

**The Grouse Inn**

**Longshaw**

Sheffield S11 7TZ

*Meal times:-*

*Mondays 12.00 to 2.30pm*

*Tuesdays to Friday's 12.00 to 2.30pm and*

*6-30pm to 9-30 pm*

*Saturdays 12.00 to 3.00pm and*

*6.30pm. to 9.00pm (drinks – open all day)*

*Sundays 12.00 to 9.00pm*

**Phone 01433 630 423**

**R Rose & Co**

Chartered Accountants & Business Advisors

Specialists at looking after the affairs of small businesses.

For a **FREE** initial consultation please contact Roger Rose FCA on **0114 281 2331**

From business start-ups and general accounting, to support and advice in business development and strategy, we provide all our services in our personal one-to-one service. To find out more please call 0114 281 2331.

213 Derbyshire Lane, Norton Lees, Sheffield S8 8SA  
Email: info@r-rose.co.uk

**Mens Hairdressing**  
*by Karen*

*at*

**Hair by Patricia Barber**

53 Wollaton Road,  
Bradway

9am to 5pm Thursday

9am to 5pm Friday

9am to 1pm Saturday

appointment or walk-in

**0114 236 6247**

**07984 021 033**

## Less is more for local 'Woman of the Year' slimmer

After losing over 3 stone and winning a local slimming competition, the only thing that's big about Brenda Mason is her beaming smile.

Brenda, from Sheffield, lost weight with her local Slimming World group in Totley and has dropped from 17 stone 1lb to 13 stone 12lbs in just 30 weeks. And her transformation hasn't gone unnoticed as Brenda has just been named the Totley group's Woman of the Year 2011.



Around one in four women in the UK and Ireland are already severely overweight and at risk of suffering a range of health problems including diabetes, heart disease and cancer. Slimming World's Woman of the Year competition recognises the achievements of women in making long-term healthy lifestyle changes for themselves and their families.

Brenda joined Slimming World in January 2011 after becoming increasingly unhappy with her weight. She says: "I started to put on weight in my twenties and things continued from there. I tried lots of different diets but they usually left me feeling

hungry and miserable. Slimming World is completely different, I never have to go hungry and I'm the happiest I've been in years!"

The 73-year-old started following Slimming World's famous Food Optimising eating plan 7 months ago. It's a healthy eating plan, nutritionally balanced and based on satisfying even the largest of appetites so slimmers never have to go hungry. Now, Brenda fills up on unlimited amounts of everyday foods like fruit and veg, lean meat and fish, pasta, potatoes, rice and pulses which are all filling foods yet naturally quite low in calories and fat. Brenda loves trying out all the delicious slimming recipes she picks up from other members at her Slimming World group. She says: "My family and friends are all amazed how much I can eat and still lose weight. I cook for them and they can't believe it's all healthy food because it tastes so good. I have embraced a healthier lifestyle and everyone's been really supportive."

Jo Elsey, who runs the Totley group, says: "I'm so proud of Brenda. Not only does she look gorgeous, she's improved her health and is bursting with energy. She's a huge inspiration to everyone in our group and I hope she inspires other women in Totley and the surrounding areas to change their lives in the same way. It can be hard to admit that you need to do something about your weight and to ask for help, but I think Brenda shows just what's possible and what a huge difference losing weight can make."

The Totley Slimming World group is held every Monday at 7pm at The Heatherfield Club, 193 Baslow Road, Totley, Sheffield S17. To join or find out more call Jo Elsey on 0114 2620523.



## Get into the groove with St Luke's Hospice!

BIG hair, even bigger flares and enough glitter to light the darkest dance floor...it's back to the '70s as St Luke's Hospice celebrates its 40th anniversary!

The Hospice is holding a series of events to mark its landmark birthday throughout the autumn.

But the most extravagant of all is going to be the Back to 1971 40th Birthday Bash at Sheffield City Hall on November 26 from 9pm, in association with Hot Pants.

And to get things off to a suitably groovy start dancers from the Bolton Performing Arts College impressed city centre shoppers with some funky moves.

"This was a great way to get the ball rolling," said St Luke's Events Fundraising manager Anna Sheppard.

"St Luke's is about providing a service for all the people of Sheffield and we think this event will raise our profile with a much younger crowd."

"And in our exclusive VIP area we'll be welcoming some high profile celebrity St Luke's supporters."

Giving the launch event some extra sparkle were stilt walkers from Twisted Entertainment, with some authentic '70s sounds from LS Audio and commentary from DJ Kevin Resley, of Sheffield Live.

The Over 18s Only November 26 Birthday Bash will include a drinks reception, 70s disco and dancers, live performers, roller rink, competitions, themed food and even themed fairground rides.

Tickets cost £20 with a 10 per cent early bird discount for anybody who books before the end of October. To book, visit [www.arenaticketshop.co.uk](http://www.arenaticketshop.co.uk) or call 0114 256 5567.

For access to the exclusive VIP area call Anna Sheppard direct on 0114 235 7561

## Letter from Hampshire

Danny and I would like to thank everyone for their good wishes, cards and gifts to us on our move to Hampshire. We moved in during a very hot spell so it was like doing extra keep-fit. So far so good. We love it. Had figs from our garden and the grapes are getting bigger. We bought an olive tree, some "Katy" apple trees and various gardening tools with the vouchers, so when we are working hard we will think of you all in Sheffield.

I hope all went well at Totley Show. I know Felicity was seeing it as a baptism of fire.

We celebrate our Golden Wedding anniversary at the start of this month. Where does the time go?

Best wishes and good health to you all, especially the T17ers and passengers.

Margaret Barlow

## Puzzle Corner

### Building Words

One night when I woke and could not get back to sleep I tried building words by adding one letter at each stage:-

Eg I, IT, PIT, SPIT, SPITE

The longest I managed was 9 letters. Use the clues to find my series:-

- 1 One, 2 In position, 3 Consumed, 4 To chide,
- 5 Angry, 6 Sea Robber, 7 Stolen, 8 Twisted,
- 9 Expelled breath

## Totley Armed Robbery

ARMED robbers held a sawn-off shotgun to the head of a man during a terrifying raid on his Totley home on Saturday 20th August before escaping with three of his rifles. The masked men punched the 62-year-old - a member of a gun club - and frogmarched him to a cabinet in his home on Marstone Crescent, Totley, where he kept his target rifles.

The gang - of five or six men - forced him to open the locked cabinet at gunpoint before stealing the rifles - a .22 Ruger, .22 Match and a .38 Winchester.

They knocked at the front door before forcing their way inside by threatening the man with a sawn-off shotgun. He was repeatedly punched during the ordeal and told detectives he feared for his life. His terrified wife was kept apart from her husband during the robbery.

Detectives said three laptops -Sheffield two black HP models and a red Samsung - were also stolen by the robbers as well as a silver Tag Heuer watch and two silver Ben Bradshaw watches. Police believe the gang knew their victim was licensed to keep target rifles locked in a specialist cabinet in his home. They are now trying to trace the missing weapons before they have the chance to be used in other crimes.

Officers believe the armed robbers carried out a reconnaissance mission at the house before the raid at 7pm on Saturday. A man called at the property on the quiet residential street around 90 minutes beforehand but told the owner's son they had called at the wrong house.

The police helicopter assisted on the night of the raid. Detectives want to hear from anyone who saw or heard anything suspicious in Totley between 5.30pm and 7pm on Saturday. They are also keen to hear from anyone who saw a green Hackney carriage cab or a black Vauxhall Vectra taxi in the area. Two cars have been found an impounded. Two 24-year-old men arrested in connection with the robbery have been bailed pending further enquiries.

Anyone with information should call South Yorkshire Police on 0114 220 2020. Crimestoppers can also be contacted on 0800 555111.

*From The Star 23 Aug 2011*



WEDNESDAY OCTOBER 26<sup>TH</sup>

TOTLEY LIBRARY, 7.30PM

OPEN MEETING AND DISCUSSION

WEDNESDAY NOVEMBER 23<sup>RD</sup>

TOTLEY LIBRARY, 7.30PM

## THE TURNPIKE ROADS OF TOTLEY

### AND DISTRICT

TALK AND SLIDES BY HOWARD SMITH

MEMBERS £2, NON-MEMBERS £3

## Dore and Totley Park & Ride

At the beginning of September, the council Planning and Highways Committee granted permission for SYPTE to build a 130 space new car park to serve the demands of the railway station and to be constructed on the site of the Abbeydale Garden Centre and the original station car park. This car park proposal has received much support from the local community, in particular because of safety concerns from the number of cars that were being parked at the bottom of Dore Road. The facility will be free to use and will have provision for 20 cycles. The scheme also includes the provision of a pedestrian crossing facility on Abbeydale Road South.

However the initial plans for the site proposed a complete clearance of all the existing trees and shrubs. After public consultation, SYPTE submitted plans to retain most of the blossom trees along the main Abbeydale Road, but still intended removing all else, replacing them with low ornamental shrubs and occasional specimen trees, typically characteristic of urban car parks. A petition from a group of rail commuters was submitted to the planning board calling for the retention of the native, wildlife friendly trees and shrubs that exist around the perimeter of the site and for this green screen to be enhanced by planting more native species, in keeping with this wooded location, directly opposite the SSSI Ladies Spring Wood. This can be done without any loss of car parking spaces and received the full support of the planning board.

SYPTE paid 1.1 million pounds for the Garden Centre site. Unless further funds to construct the car park can be found, we may be looking at the blue hoardings for some time yet!

Dawn Biram

Further correspondence with the SYPTE on the above subject, confirms that they are still seeking funding before they can do anything with the site.

It cannot be used before work is carried out to make it safe. Money for that work is not available & would be wasted if funding was secured for the total scheme.

Roger Hart

## T.O.A.D.S.

presents

## "PLAY ON"

written by Rick Abbot

"Play On" is the next play to be performed by TOADS. The dates are from Wednesday, 23rd November to Saturday 26th November, and the venue is, as usual, St John's Hall, Abbeydale Road South, at 7.30pm.

*This is the hilarious story of a drama group desperately trying to put on a play in spite of maddening interference from the author who keeps revising the script!*

Call **0114 235 1206** to reserve your ticket - £4.00 or £3.50 for concessions - or contact any TOADS member.

## Puzzle Corner

Solution to building words:-

1 A, 2 AT, 3 ATE, 4 RATE, 5 IRATE, 6 PIRATE, 7 PIRATED, 8 SPIRATED, 9 ASPIRATED  
Don Ashford

## GARDENING TIPS FOR OCTOBER

October the getting ready for colder weather time, all the tender plants need to be ready for bringing in before old Jack Frost comes to nobble them.

Raking leaves and generally tidying up will make the garden look as though someone cares and will encourage you to keep it that way, don't forget to leave a few leaves in a quiet corner for the hedgehogs to make their winter quarters warm.

Our neighbour has taken down a very large conifer tree which borders on to our garden it was looking as though it would fall down. It had quite a list towards our plot, its removal has created a lot more light to the cold frame this has encouraged me to give it a good fettle and a coat of wood preserver (green). It looks quite posh now. The lights (windows) need the same treatment then it will be ready to use to protect the overwintering plants, and also useful for bringing on seedlings next spring.

The tomatoes have been good and are still producing (17th September) in particular the Sungold variety, the red varieties are a bit slow ripening I hope the weather is kind to us and keeps warm enough so that we can enjoy the taste of real home grown tomatoes for a little while longer, they will have to be cleared by the end of October to make room for the plants that will be over wintering in the greenhouse.

The fish are feeding well they are putting on the weight they need to see them though the fasting period they take though the winter, the frogs and toads will be disappearing soon into their hibernation places.

The birds are back after moulting time and are feeding well, I will be feeding them though the winter so that we can enjoy their antics as they come foraging for food and the extra tit bits we put out.

We are not planning any big alterations this autumn/ winter just keeping things tidy and doing the usual caretaking activities, I understand that the green bag collection is finishing next month which seems a bit too soon just when the leaves are falling and the trees and shrubs are being pruned, I suppose it is down to spending cuts as with most other council services.

We are off on holiday after the show we are looking forward a nice break away from the daily routine though I am always glad to get back to my garden.....

Saturday show day!!! There was a BUZZ in the air, no it wasn't bees it was the atmosphere volunteers getting ready for Totley folk, The tables were set on Friday all went like clockwork it was great to see the efficiency of the young and old people getting things ready and enjoying what they were doing.

The atmosphere continued there was the BUZZ of expectancy as the exhibits began to be entered. "we had a show" slow at first but as the morning progressed the queue for entry grew, the excited children with their imaginative entries all a tremble with their wibberly wobbly jellies and their wobbly Lego models to see their faces was a real treat.

The BUZZ settled down a bit at the close of entries, the judges went to work with the difficult task of deciding who the winners were going to be, at the same time the volunteers took a well-earned break having sandwiches and tea, and discussing things relevant.

Then the big BUZZ, the public were here the excitement was obvious the people who had entered and won were waving their certificates, the children got a real BUZZ when they saw the show bench with their exhibits on show to the public.

The bigger BUZZ came from the tea room where the gossipers were in full voice catching up on the Totley goings on and listening to the Escafeld band playing their favourite tunes, and enjoying the tea and cakes.

It was a real treat as it always is to give the cups, shields, and medals to the winners especially the children. The winners are in this issue of **Totley Independent** (page 8 & 9). The end of the show was rounded off nicely with Les Firth auctioning the produce which was kindly left by the exhibitors; the proceeds will go to T17. The public departed replete and happy quite a few with fruit, vegetable, cakes, and jam bargains.

Then another BUZZ as the volunteers leaped into action with the same enthusiasm dismantling, loading, sweeping, and tidying up. We were all tired but happy to think we had a show which gave us all a real BUZZ!!! A big thank you to all young and old who helped to make the show a BUZZing success

**FLOWERS** Clean up borders and beds. Prepare ground for autumn planting. Plant out rock and alpine plants and top dress the beds with fine grit. Lift, dry out and store gladioli and acidantheras etc. If the frosts are early this year be prepared to lift and store dahlias (when the tops are blackened by frost). If you haven't already done so, prune and train rambler roses. Plant out wallflowers, polyanthus, forget-me-nots, sweet Williams, foxgloves and other similar plants which are biennials, or grown for spring bedding displays. Don't hang on to the summer plants too long, so that the following plants can get established before the winter weather sets in. Make sure the soil is in good fettle by adding rich compost and bone meal dug into the soil. Most bulb planting should be completed by mid-month except tulips; they can be left as late as October. Herbaceous perennials which have got a bit too big can be split up and re-planted.

**VEGETABLES** Onions which are for keeping should be exposed to as much sun as possible (ha, ha!) and out of the rain, they will keep much longer if they are a

nice golden brown colour, strung together in an airy frost-free place.

Gather french and runner beans as they develop, before the frosts finish them. Earth up celery a little at a time. Sweet corn should be gathered before the cob begins to go too yellow. Prepare spare ground for planting spring cabbage.

Leeks can be fed with quick-acting nitrogenous fertilizer, such as nitrate of soda or liquid fertilizer. October is about the latest month for gathering herbs for winter drying. Marrows can be stored if you have too many for immediate use hang them up in old stockings or nets in a cool frost-free place. Carrots and beetroot should be lifted now to prevent the roots from splitting, they will keep well packed in dry sand. Lift young parsnips now for immediate use; leave others in the ground to pull as required, watch out for slugs. Pick winter and perpetual spinach regularly to encourage new growth.

**TREES, FRUIT AND SHRUBS** Prepare ground for tree, shrub and hedge planting, shelter newly planted evergreens from cold winds with fine mesh netting,

and protect the roots of young camellias and magnolias from frost with straw. Hardwood shrub cuttings can be taken now, bear in mind these can take quite a long time to root. Put grease bands round apple and cherry trees. Spray trees with fungicide if canker or scab has been a problem. Prune blackcurrants. Plant out new fruit trees between now and November. Clean up strawberry beds; remove dead or dying foliage and weeds, top dress soil around plants.

Check up on the supports for raspberries and renew where necessary. It is a good time to plant raspberries, blackcurrants, gooseberries etc. Try one or two new ones like Tayberries or white raspberries, it makes a change and they look different in your fruit salad. Cut back tall roses by half to prevent wind rock (I do not prune roses fully until March or April).

#### **GREENHOUSE AND INDOOR PLANTS**

Chrysanthemums should be brought in before the petals begin to open or if frost threatens they should be brought in straight away. Bring in any tender plants now to prevent any damage or loss by frost. Ventilate the greenhouse well to prevent the build-up of mildew and diseases which are spread by the damp atmosphere. Cineraria must not be allowed to dry out, but they must not be sodden. Move Primula obconica into the greenhouse. Keep all pot plants tidy; remove all dead or decaying leaves, especially on geraniums as disease can soon spread to the stems. Feed cyclamen plants with a weak plant food, about once a fortnight. Schizanthus and calceolarias must not be allowed to become pot-bound. Pot them on as soon as the pots become comfortable full of roots, and place them near the glass to prevent them becoming drawn. Do not use too much heat in the greenhouse yet, just enough to keep the air dry and circulating and to keep out old Jack Frost.

Dry off begonias, gloxinias and achimenes growing in pots, turn the pots on their side and do not water them.

Gradually reduce the amount of water given to fuchsias but do not dry them out, pot on any cuttings, never let them become pot-bound or starved. Check bulbs being brought on in darkness, and water if necessary. Plant cape cowslip, freesia, indoor gladioli, Dutch iris, lilies, daffodils, hyacinths and tulips to flower in the spring and summer keeping them cool and in the dark until the shoots appear.

**LAWNS** Rake, scarify and spike compacted areas. If the weather is mild, turf can be laid. Pick off stones and lightly roll newly seeded lawns.

Cheerio for now

Tom

## **EYES ON TOTLEY!**

Watching over us, photo from Akley Bank.



Photo by Anne Hart.  
3 September

## **ANY IDEAS?**

This arrow was found whilst clearing the stream in Green Oak Park, we know that George Pearson & Sons - Heatherfield Nurseries were located there back in the I think 1920s the area is where the Totley library stands today.



I should welcome any ideas as to what the arrow would have been used for, it is made of some kind of stone with grooves on one side and a hole at the

tail end. It measures 6 1/2 ins. in length and the arrow part measures 5ins and is very heavy, it is obviously a directional arrow but I am intrigued as to what it would have been used for.

If anyone can throw any light on where it would have been used then please contact:- Marlene Marshall tele. no. 0114 235 1005



*The Crown Inn*

Tony and Julie at

## **The Crown Inn**

**Welcome you for**

**Good Quality, Home Cooked Food**

**Tuesday – Friday**

**12-2pm & 5.30-8pm**

**Saturday & Sunday**

**12-2pm**

**Come & join us for**

**Good Beer, Good Food & Good Music**

**Tel 0114 236 0789**

**CLOSED SUNDAY EVENING**

Visit our website: [www.crowninntotley.co.uk](http://www.crowninntotley.co.uk)

#### **LIVE MUSIC**

**11th October**

**Highway Child**

**18th October**

**Rodger Unplugged**

**1st November**

**The Stones**

**5th November**

**Big Bang**



## Activ Physiotherapy

Local physiotherapists Andrew Okwera, Clare Heward and Angela Hodder have decided to merge their practices in order to provide a more varied and specialised service to their clients and local community. The practice, which shall be known as 'Activ Physiotherapy', will have multiple clinics servicing Bradway, Totley, Norton Lees and Dronfield. Andrew of Activ Physiotherapy commented "Having individually built successful practices we felt that it was time to improve the service we offer further. This merger will enable our clients to benefit from a variety of specialised skills over several sites. It would not be possible for us to provide this level of excellence individually, therefore this merger is a natural development for us."

The owners of this new practice have over 30 years physiotherapy experience and are now able to provide the following specialist services: Sports Injury Physiotherapy, Acupuncture, Women's Health Therapy (including pre and post natal), Pilates Classes, Pain Management and Workstation Assessment. Georgina Hollinrake from Bradway Physiotherapy will add yet further experience and skills.

Clare, who owns Bradway Physiotherapy Clinic added "Joining our practices makes sense as clients will clearly benefit. We have a talented team who pride themselves on offering the highest quality of care. We are already looking to the future and hope to have a new 4th clinic open shortly, it is our intention to expand our multidisciplinary approach by including services such as Massage Therapy, Chiropractic and Neurological Rehabilitation."

Angela also added "We want to provide the best quality service and ensure we are always accessible, by running multiple practice venues with new and improved services, I am sure that our valued local clients will benefit substantially"

Activ Physiotherapy will be open 6 days a week over different sites with evening appointments and home visits available. Activ Physiotherapy is recognised by all major insurance companies including BUPA and Westfield. For more information please visit our website [www.activphysiotherapy.co.uk](http://www.activphysiotherapy.co.uk) or telephone 0114 235 2727

## Woodseats Advice Centre

**ADVICE SESSIONS**  
at

## Totley Rise Methodist Church

**Grove Road, Totley**

**S17 4DJ**

**Tuesdays**

**10.00 am to 12.00 noon**

This is a 'Drop In' service



**All advice is free, impartial and confidential**

We can help with filling in forms, benefits, tax credits, pension credits, problems with debt, employment, housing, consumer or disability issues etc.

Woodseats Advice Centre, 714 Chesterfield Road, Sheffield S8 0SD  
Tel: 0114 258 4384

Company limited by guarantee registered in England number 7138267  
and registered charity number 1134623

## SHEFFIELD BACH SOCIETY

**SATURDAY 29 OCTOBER 2011**

Sheffield Bach Choir presents BAROQUE BEAUTY with The National Festival Orchestra leader SALLY ROBINSON at St Mark's Church, Broomhill, S10 2SE 7.30 pm

Tickets £12-15; Students £6

Accompanied under 16s are admitted free of charge - [boxoffice@sheffieldbachchoir.org.uk](mailto:boxoffice@sheffieldbachchoir.org.uk)

Box Office: 3 Tapton Mews, Tapton Crescent Road, S10 5EA and at the door on the night of the concert.

On-line booking from the Bach Choir Website: [www.sheffieldbachchoir.org.uk](http://www.sheffieldbachchoir.org.uk)

Sheffield Bach Choir presents some of Baroque music's best-loved classics including Vivaldi's Gloria and Pergolesi's Magnificat. The programme includes some special rarities by Handel - the Anthem on the Peace of 1749 among them - as well as his exquisite early psalm setting, Dixit Dominus of 1707.

**MONDAY 19 NOVEMBER 2011**

Sheffield Bach Choir presents MENDELSSOHN MASTERWORKS including HYMN OF PRAISE and HEAR MY PRAYER with THE NATIONAL FESTIVAL ORCHESTRA AND SOLOISTS Joanne Dexter, Jenny Cowling & Ben Thapa at Sheffield Cathedral, Church Street, S1 1AA 7.30 pm

Tickets £12-15; Students £6

Box Office: 3 Tapton Mews, Tapton Crescent Road, S10 5EA and at the door on the night of the concert.

Accompanied under 16s are admitted free of charge - [boxoffice@sheffieldbachchoir.org.uk](mailto:boxoffice@sheffieldbachchoir.org.uk)

On-line booking from the Bach Choir Website: [www.sheffieldbachchoir.org.uk](http://www.sheffieldbachchoir.org.uk)

Sheffield Bach Choir presents some of Mendelssohn's most famous choral pieces culminating in the composer's magnificent Hymn of Praise (Lobgesang) - a work very rarely heard in full with the symphony that precedes it - acclaimed as the natural successor to Beethoven's Choral Symphony. Other repertoire includes the immortal Hear my prayer with O for the wings of a dove and the superb Lauda Sion.

## HELEN AND ALLAN 'CLOCK UP' 40 YEARS AT MKO AS A COUPLE!

Little did Helen and Allan think when their eyes met at work 20 years ago that they would marry, have three children and spend their entire careers as optometrists with the same company - Martyn Kemp Opticians!

Helen joined South Yorkshire's largest independent firm of opticians straight after graduating from Bradford University, and Allan Forster embarked on his career at MKO as a 20-year-old, 'armed' with a degree gained at Cardiff University.



Helen and Allan first met at MKO's Herries Road practice - one of ten - where they benefitted from the guidance of the firm's founder, Martyn Kemp during their optometrist pre-registration

periods. They are now directors of MKO Limited - Helen based at Herries Road and Allan managing the Totley and Abbeydale Road practices.

Allan said: "Both Helen and I continue to enjoy our stimulating careers at MKO where patients are treated with an attentive, highly professional and cutting edge service which is all about team work."

# ALL SAINTS CHURCH, Totley Hall Lane.

Harvest Festival

## Services

Services in October follow our normal pattern:-

10.00am Morning Service

6.30 pm Evening Service

### 2nd October Harvest Festival at 10.00 am

As usual we are donating non-perishable food and toiletries to the Cathedral Archer Project, which provides a free breakfast all year round, to the homeless and disadvantaged in the city.

## HARVEST THANKS

Lord we thank You for the harvest  
Be it bountiful or poor.  
Lord we thank You for the harvest  
Lying here upon the floor  
Or laid upon your altar  
So wonderfully serene  
And upon the window sills  
See how the colours gleam.

Lord we thank You for the harvest  
Of all that we ignore  
The skills that You endow us  
Our minds and so much more.  
We thank you for the doctors  
And all who work around them  
For those on local councils  
The firemen and policemen.

When standing in the city  
Midst noise and bustle there  
We thank you for the buildings  
Also those who make us stare.  
For Lord You gave the blessings  
The skills and tools so great  
From ideas that you implanted  
Great things do we create.

The list dear Lord is endless  
With books and telephone  
There's clocks and sinks and beds Lord  
To furnish up our home  
Lord we thank You for the harvest  
Most precious and supreme  
A blessing so delightful  
For people and the love that flows between



## Sunday AM @ All Saints – Children and Young People's Sunday Church.

For the past 2 years we have held a Light Party (an Alternative2Halloween Event). This year we are having a joint Light Party at Totley Rise Methodist Church on Saturday 29th October 2011 (4.30 – 6.30pm suitable up to age 10). Details from either Church.

## What is a Light Party?

As Christians we believe that Jesus is the "Light of the World". Halloween focuses on dressing up as ghosts and witches and playing tricks on other people. It is viewed as harmless fun. We actually believe that the Bible tells us to walk in the light. It also tells us that scaring vulnerable people and doing wrong things is not what we should be doing. "Trick or Treat" is the catchphrase we all recognise, however, have we actually missed the best treat of all in the Bible? We are not against fun, we have plenty of fun at these events in a safe, light and warm environment, without leaving people in any fear of being tricked. You would be very welcome to this event. Keep a look out for more information or contact myself Andy Holme 2362088 or either Church.

At this season of harvest and with the abundance of apples, here is a delicious, simple, tangy recipe.

## APPLE MOUSSE

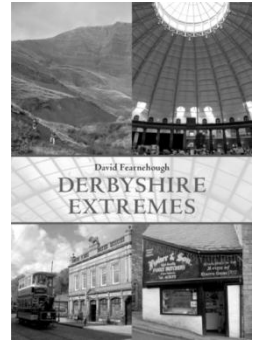
1lb Bramley Seedlings, peeled, cored and sliced.  
3 tablespoons of cold water.  
2oz granulated sugar  
1 lemon jelly  
¼ pint double cream.

Gently cook apples with the sugar and cold water until soft and mushy. Blend to a smooth pulp. Leave to cool.  
Make up the jelly to ½ pint with boiling water.  
Dissolve jelly and leave it to cool, but not set.  
Lightly whisk the ¼ pint of cream Whisk cooled jelly into the cream then fold in the apple pulp.  
Pour the mixture into a 2 pint dish and leave to set.  
Decorate as desired. Serves 4 – 6.

Andy Holme, Vivien Filleul, Dorothy Firth

## Book Shelf

If you thought you knew Derbyshire be ready to be surprised, **Derbyshire Extremes**, by David Fearnough, compiles a unique record of over 600 extremes from the first in the county to the oldest, the longest, the fastest, the finest or even the only one. The subject is wide and varied but entries must be special. Do you know Derbyshire has the oldest megalithic tomb, the world's first travel agent, the first astronomer royal, the man with the largest collection of bar towels, the first National Park, the league's first football mascot, the first oilwell, etc. This is a book to be left on the coffee table, to be dipped into or to be followed through its comprehensive index, tracing subjects, people and places that feature in the book. An entertaining, and informative collection of facts to delight both visitors and local residents. Published by Amberley Publishing in paperback. 144 pages, 124 b&w illustrations, price £14.99 ISBN: 978-1-4456-0082-6



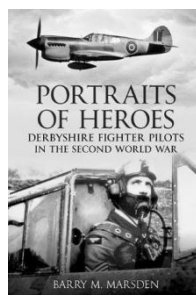
If you are looking to plan walks in the Peak District which visit some of its prehistoric sites and monuments, then **Walks in the ancient Peak District** by Robert Harris is a must have. This 2nd revised edition contains 28 routes from 4 to 9 miles long, three of which are completely new. All the routes are circular, most starting and finishing in a town or village that is easy to locate and convenient to reach by car. Each has a map, essential information and descriptions on routes and sites. You can visit stone circles, hidden caves and ancient settlements, all giving pointers to our ancestors and the thinking behind their monuments, and rituals. Published by Sigma Leisure, 202 pages, price £8.99 ISBN: 978-1-85058-859-7

The Winnats Pass, is famed for its picturesque beauty, but in the middle of the eighteenth century, when the Peak District was remote and dangerous, two runaway lovers were robbed and murdered there - or so the story goes. The Peak District is renown for its folktales, but are they true and how did they evolve?

**The story of the Murders in the Winnats Pass** by Mark Henderson, provides a unique insight into the ways in which legends grow in the telling. It explores this intriguing tale, looking at how and why the story has changed and examines the evidence for a historical basis, using numerous primary sources and original research evidence. Published by Amberley Publishing, 192 pages illustrated in b/w, price £14.99 ISBN: 978-1-4456-0014-7

Academic interpretations of Neolithic rock motifs and their location within the landscape (we have two in Ecclesall Woods) are often thought-provoking, but often fail to acknowledge their remarkable consistency throughout the British Isles. In **Mindscapes of Prehistory**, the authors Brian Smith and Alan Walker advance a theory that these Neolithic symbols belong to a coherent and cyclical cosmology circumscribed by sunlight and water, birth and death, and argue that the evidence is plain to see for any hillwalker or amateur archaeologist who dares to take an interest. The result of many years of fieldwork, careful observation, research and contemplation, this book promises to stimulate debate on this fascinating and understudied subject for years to come. Published in paperback by Amberley Publishing, 176 pages with 105 illustrations (32 in colour), price £17.99. ISBN: 978-1-4456-0188-5

**Portraits of Heroes**, Derbyshire fighter pilots in the second world war. As the title promises author Barry Marsden brings together from first hand accounts, archive sources and photographs taken from the personal collections of the airmen's families, a pictorial history of Derbyshire's Second World War pilots. From day one to the last,



fighter pilots from Derbyshire were active in every theatre making a significant contribution to the final defeat of the Axis.

The book recounts the stirring deeds and tragic deaths of these courageous pilots and serves as a comprehensive group biography of thirty-three brave men. Published by Amberley Publishing in paperback, 283 b/w pictures. 192 pages price £14.99 ISBN: 978-1-4456-0271-4

**The Caspian Gates**, by Harry Sidebottom. This is the fourth book in the Warrior of Rome series, by one of several authors feeding the current demand for historical novels set in the Roman period. If you enjoy historical action, you'll enjoy this, although I would recommend starting with book one, which I still think is the best. The book is well written, carefully researched and full of historical detail - what the author doesn't know about the Romans, isn't worth knowing. Sometimes too much detail though, including quotations from the Greek, which tends to break up the flow of the story. From an earthquake in AD 262 to raids by the Goths, from Black Sea storms to the very outposts of the Roman Empire you'll be hard put not to enjoy this adventure. Published by Penguin Books, 413 pages, price £14.99 ISBN: 978-0-718-15591-9

The number of pubs may be in decline, but they still play an important role in our culture and everyday lives. So any book on the subject will attract readers and this **Pocket Guide to Pubs and their Histories** by Gordon Thorburn is no exception. How did alehouses evolve into inns and taverns? What exactly is a pub? What should pubs be like? Is there a perfect pub? Which one town has the pubs with both the longest and the shortest names? How many Lions, Crowns and Horses are there? Why would you give your pub a name like The Labour in Vain and The Eel's Foot. Facts, figures, the straightest and highest pub crawls and the history behind many pub names are all revealed. If you want to know the answers, or at least an attempt to answer them, be sure to take this book with you on your next pub crawl or put it on your Christmas list. Mine's a pint! Published by Pen & Sword in paperback, 170 pages, price £9.99 ISBN: 1-84468-093-2

John Sheridan was without doubt one of the most gifted ball-playing midfielders of his generation. He was often the man that made a side tick. Today he is revered by the fans of the clubs he has played for and is bringing his skills and knowledge to play in a successful managing career. **A Proper Player** by E.J.Huntley is a tribute to his extraordinary (and ongoing) football career and is essential reading to all those fans. Published in paperback by youbooks.co.uk, 184 pages price £10 ISBN: 1905278462

John Baker



## SWT REGULAR / FULL-TIME VOLUNTEER OPPORTUNITIES



Sheffield &  
Rotherham

### **Volunteer Children and Young People Assistant**

We are looking for someone who is enthusiastic and passionate about working with and supporting children outdoors to join our Community Engagement and Learning team to support the planning and delivery of environmental education and play activities. As well as during business hours, these Education Sessions will also occur in the evenings and at weekends and so a degree of flexibility is needed. Experience of working with children and young people is desirable but not essential as training will be provided.

### **Volunteer Human Resources Assistant**

We have an opportunity for someone with an interest in, and ideally some experience of, Human Resources to assist our HR Officer in providing a range of personnel services to staff and volunteers.

Duties will include providing support to staff and volunteer recruitment, monthly payroll, internal staff training, disciplinary, capability and grievance processes and maintaining HR and Health & Safety policies & procedures. The placement will be during business hours and we would be ideally looking for someone to provide a regular time commitment of at least a day a week.

### **Volunteer Wildlife Watch Leaders**

Wildlife Watch is the junior branch of The Wildlife Trusts. We have a number of groups running across Sheffield and we are currently seeking volunteers to help run or assist these groups and establish new groups in other parts of the city. This will involve regular weekend work as part of a team. You will assist in preparing for the sessions/meetings and engaging children in activities. An enhanced CRB check will be needed for this position.

### **Volunteer Land Management Assistants**

We require enthusiastic volunteers to assist in the organisation and implementation of practical conservation work in Sheffield and surrounding areas. This volunteer vacancy would suit someone with experience of a range of practical conservation work, including fencing, access work and basic construction (this experience is not essential). Basic I.T. skills are desirable. Supervision skills would be an advantage. Would suit someone with a wide range of relevant knowledge, wishing to gain experience in land management for nature conservation. A full clean driving licence would also be an advantage.

A good level of physical fitness is required as the work will be mainly site based, working outdoors in often remote locations.

### **Volunteer Administrative Assistant**

We are looking for individuals who can give a regular commitment to help us with various tasks including answering calls, photocopying, binding, laminating and typing various documents. Some experience in using Microsoft Office packages would be advantageous.

*An application form for any of these opportunities can be obtained by email at [volunteering@wildsheffield.com](mailto:volunteering@wildsheffield.com) or by telephone on 0114 263 4335*

## BOLLYWOOD COMES TO BASLOW AS FOOD FAIR GOES INTERNATIONAL

Totley based food events company Hartingtons are bringing a flavour of the East to their next Food Fair at Baslow Village Hall.

A great line up is promised on **Sunday 9th October** for their Autumn Food Fair and Taste of Asia event. Sheffield's Edo Sushi, who are currently winning both acclaim and a loyal following for their outstanding food, will be doing demonstrations as well as selling their home made sushi. Jas from Red Hot Cuisine will be showing you how to cook authentic curries that not only taste great but are also good for you and there will be Southern Indian food made to traditional family recipes from the Tasty Samosa Company. A range of unusual teas including green teas and infusions from highly acclaimed local business Tea Box will be available on the day and local favourite Heavenlies are having a Bollywood theme for their delicious afternoon tea stall. In addition there will be a wide range of stalls selling some great traditional local produce.... so on this occasion East really does meet West!!

There are two further Fairs before the end of the year.....on **Sunday 6th November** when there will be a Autumn/Bonfire theme and a Christmas Food and Drink Fair will take place on **Sunday 4th December** with seasonal entertainment planned.

The Fairs takes place at Baslow Village Hall from 10.30 a.m. to 4.30 p.m. with FREE ADMISSION.

A full line up of stallholders can be found on Hartingtons website [www.hartingtons.net](http://www.hartingtons.net) and there is a link to their blog, which is regularly updated about all the events.

Chris Horne of Hartingtons says" We are delighted that so many residents of Totley have become "regulars" at our Food Fairs. Visitors get the chance to meet the producers and hear their stories, have free tastings before they buy and even get to see a few cookery demonstrations. Everyone is welcome, admission is FREE and you can always combine a visit to the Food Fair with a walk in the grounds of Chatsworth House which is close by".

Fairs: 9th October, 6th November and 4th December at Baslow Village Hall. 10.30 a.m. to 4.30 p.m. FREE ADMISSION. [www.hartingtons.net](http://www.hartingtons.net)

## Do you need help?

### - In coping with worry, illness, depression or spiritual problems.

Christians believe that God, through Jesus Christ, comforts, heals and brings peace of mind, in response to prayer.

Members from All Saints and Totley Rise Methodist, churches are currently offering to pray in confidence for anyone who would like to come to:

### TOTLEY LIBRARY BUILDING ON SATURDAYS

between:

12.30 and 1.45 pm during October 2011

For information ring Brian on 07722 236037

## Homeopathy @ Synergy.

162 Baslow Road, Totley, Sheffield, S17 4DR

Advanced Indian Sensation Method Homeopathy

Alternative medical treatment for all chronic conditions

Registered with major insurance companies. Can claim through the Westfield scheme



Registered member of

The Society of Homeopaths

Ring: Lindsay Allison RSHom for more information:

0114 235 7845 or 07968 167036

## Kitchen Solutions

By Nigel Watson

Fully fitted quality kitchens at affordable prices, planned and designed to your specification. View a computer generated impression prior to installation.

For a local, friendly, reliable service call for a free brochure and quotation.

TEL: 0114 236 4778

Mobile: 07971 528149

Come with an

## Hallamshire Osteopathy

and talk

Osteopath, who will consider you as a person and not just your symptoms.

David Webster (Registered Osteopath)

Treatment for:

- back and joint pain
- neck and shoulder pain
- sports injuries and muscle strains
- work induced and driving related pain
- pregnant ladies and new mums

Synergy  
162 Baslow Road  
Totley  
Sheffield  
S17 4DR

0114 2357845 or 07943 589293

[www.relieffrompain.co.uk](http://www.relieffrompain.co.uk)

All treatments £35

# DON'T PUT UP WITH... PAIN

## Activ

Physiotherapy  
specialises in:

- Sports Injuries
- Back & Neck Pain
- Joint Problems
- Muscle & Ligament Strains
- Repetitive Strain Injuries
- Post Op. Rehabilitation

Registered with major insurance companies, BUPA, Aviva, Westfield Health

**Early morning and evening appointments are available . . . ring for details**

Totley: 0114 235 7845 • Norton Lees: 0114 255 6434  
Mobile: 07901 968 549



Gail Kitchen: 07986473415



Does going away from home mean your cat is sad and unhappy?  
Does a trip to the cattery scare your cat *not to mention your wallet?*

WORRY NO MORE!



MOGGY MAID is on hand to feed, love and provide everything your cat needs in the relaxing comfort of its own home.

As we cat-lovers know, unfamiliar sights and smells can stress your cat, whereas leaving them in the familiar surroundings of their own home carries less worries, for your cat and for you.

If only for a night, weekend, or a month; holiday, Christmas or any time of the year, MOGGY MAID is here to help

**LIGHTEN YOUR LOAD**



We promise no mischief allowed!



In a professional manner and with quality service, you can ensure individual care and attention, whilst you relax away from home.

We haven't forgotten the rest of the family; mice, rabbits, budgies, goldfish, etc will receive care and affection too.



**LOCAL FRIENDLY SERVICE**

From £5 a day

07986473415

For more Information, contact Gail Kitchen on:

5 Ullswater Place, Dronfield Woodhouse

# Looking for designer labels?

Let our unusual Vision Plan help you pay for them and much more!

Offering all the benefits of 35 years' experience of South Yorkshire's largest independent firm of opticians.

- Friendly, qualified staff
- Eye examinations
- High-tech diagnostic retinal camera and MacuScope
- Wide choice of spectacle lenses, contact lenses and stylish frames
- Special offers



ASK FOR A VISION PLAN LEAFLET

GUESS DIESEL GANT  
EYEWEAR

POLICE EMPORIO ARMANI

Visit our website and make your choice of designer frames at one of our practices including 63 Baslow Road (tel: 236 4485) and our extensive new premises at 634 Abbeydale Road (tel: 255 6554)

[www.mko.co.uk](http://www.mko.co.uk)



## Shepley Spitfire

56 Mickley Lane, Trolley Sheffield - S17 4HE 0114 236 0298

New Menu launch **From Sept 22<sup>nd</sup>**

2 meals for **£8.95**

Served everyday 11am until 9pm

Succulent Sunday Lunch only £5.99

Quality Cask Ales

Quiz Night every Tuesday from 9:30pm

**The Home of Big Fish Friday!!**

Beer battered Cod fillets, Chips and Peas Two for **£8.99**

Eat in or Takeaway

FOR THOSE OF YOU WITH A LITTLE APPETITE

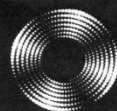
WE HAVE INTRODUCED A SMALL

PLATES MENU FROM **£2.49**

ALL DAY EVERYDAY

**CHRISTMAS MENUS NOW AVAILABLE**

# Entrust Electrical



For all your electrical requirements in or outside the home you can trust **Entrust** to do it right!

- ✓ Full or Partial House Rewiring
- ✓ Additional Sockets, Switches, etc
- ✓ Energy Efficiency Enhancements
- ✓ Contemporary & Classical Refurbishments
- ✓ General Electrical Maintenance & Repair
- ✓ Homebuyer Electrical Safety Surveys
- ✓ Telephone and Computer Data Points
- ✓ Garden, Pond & Other Outdoor Electrics
- ✓ Security Lighting & CCTV



City & Guilds  
Qualified

**(0114) 2352084**  
**07935 250814**

[www.entrustelectrical.co.uk](http://www.entrustelectrical.co.uk)

Old Hay Close, Dore, S17 3GP



## "need help in your garden?"

...we can help *you*

the  
**ABBEYDALE**  
gardeners

Kevin and Mark from the recently closed Abbeydale Garden Centre, have started their own Garden Services Business.

Kevin Hunter 07818 20 12 42  
Mark Naylor 07739 75 23 19

*"give us a call, no job too small."*



## Music Tuition



Piano • Keyboard • Flute • Singing  
Guitar (rock, metal, blues, jazz, funk, pop, folk)  
Music Theory • GCSE work

Music graduates, each with 25 years  
teaching and playing experience

All ages, beginners welcome.

Exam work or just for fun!

Call Mark or Karin

0114 237 4853 & 07981 888352



**Serenta HomeCare**

Are you in need of a little help and support within  
your own home? The older we get the more help we need  
to enable us to live a more independent life.

Personal Care • Medication • Domestic • Sitting Service • Social and Leisure activities

To find out more call Sue 07715 636 395 Pat 07715 634 781  
or visit [www.serentahomecare.co.uk](http://www.serentahomecare.co.uk)

For reference from an existing client please call 0114 2366891

## HEARING AIDS

MAURICE NAYLOR FBSHAA RHAD is your  
local hearing aid specialist and at your  
request will test your hearing in your own  
home, free of charge, and if needed you can  
try a custom made aid for four weeks  
without obligation to purchase.

Tel : 262 0010

In the ear digital from £495

## ATTENTION ALL WOOD BURNING AND MULTI-FUEL STOVE OWNERS

Are you looking for an environmentally  
friendly fuel for your stove?

Waste Wood Briquettes are made  
from waste wood products that would otherwise be  
sent to landfill. You can also use our briquettes  
on your Stove, B.B.Q. or Chimenea.

PLEASE VISIT OUR WEBSITE  
[WWW.WASTEWOODBRIQUETTES.CO.UK](http://WWW.WASTEWOODBRIQUETTES.CO.UK)

OR CALL 01298 872 896

FREE DELIVERY IN YOUR AREA



Your local Rose's Bread stockist

Coffee Shop now open

Monday to Friday 8am to 4pm, Saturday 8am to 1pm

51/53 Baslow Road

Tel: 236 4238

## Horizon Electrical

*Faults, Rewires, Sockets, Lights,  
Cooker Points, Electrical Showers,  
Phone Points, Security Lights*

No job too small

*Fully qualified with friendly advice*

Ring Totley 236 4364 or  
Mobile 07772 483154



**Hatha**  
**..YOGA CLASS..**

Totley and Ranmoor

For more information or to book a place call  
RACHEL on (0114) 236 9943

BWY Qualified Teacher

BODY, MIND & BREATH  
Enjoy the union of yoga



## BRADWAY INSTALLATIONS

Kitchens, Bathrooms.....and everything in  
between

- Complete Kitchens - Installation or supply and installation
- Kitchen Refits - Replacement worktops/sink/hob etc. Worktop / cabinet repairs
- Bathrooms - Cloakrooms - Domestic plumbing - Tiling Laminate / Vinyl flooring

All work undertaken is fully insured and guaranteed

Ring Peter - 0114 236 5995  
Mobile - 07766 411355

## SLIMMING WORLD

**10 WAYS TO MAKE SURE IT WILL BE THE LAST TIME LOSING WEIGHT IS YOUR NEW YEAR RESOLUTION. THIS TIME MAKE IT LAST FOREVER**

1. Focus on your weight loss goal and prioritise it.
2. Be sure you really want to lose weight for yourself. Doing it to please someone else may only lead to short term weight loss.
3. Take advantage of all the group support at your local Slimming World class. Even if you are not a 'joining in' person, you'll be surprised how motivating it is.
4. Accept that you will have ups and downs in your weight loss journey, and be forgiving of yourself if you hit a difficult patch.
5. Listen to your 'inner script' and make a conscious effort to talk to yourself in a positive, encouraging way.
6. Keep up your interest in your healthy eating plan by trying new foods, new recipes, and new ways of using your Sins. This will help you avoid getting in to a dieting rut which can be boring and demotivating.
7. Be honest with yourself about what you are expecting from your weight loss and how you are getting on with Food Optimising week by week. People who set unrealistic targets for weight loss or body shape are more likely to give up than those who set achievable targets and share their ups and downs.
8. Go back to your class even after (especially after) you've had a weight gain. You will not be judged, just helped and supported.
9. Keep setting new goals and rewarding yourself for milestones until you reach your target weight, and afterwards!
10. Don't put your life on hold until you've lost weight. You can still enjoy life and lose weight. Think of your dreams and ambitions and bring them to the fore. The positive feelings you get from starting to 'live a little' can only help your motivation and your weight loss.

Group details:

**Bradway Annexe** now at **St Peter's Church, Greenhill Roundabout, S8 7FN** Thu 5pm & 7pm

**Dore Old School, Tues 5.30pm**

Tel: **Alison Murphy 07815 046569** for further details

**Heatherfield Club, Baslow Road - Mon 7pm**

Tel: **Jo Elsey on 0114 2620523** for further details

## PhysioFOCUS

at **Totley Rise Dental Practice**  
85 Baslow Road,  
Sheffield, S17 4DP



**Physiotherapy** treatment available for:

- Back and neck pain
- Sports injuries
- Sprains and strains
- Joint and muscle pain
- Arthritic pain
- Whiplash
- Repetitive strain injury
- Headaches

**Appointments: 0114 2360333**

Also available:

- Pilates classes
- Pilates 1-2-1
- Golf Fitness Screening  
(as used by consultants to UK, European and Australian PGAs)

For more information please call:

Emer on: 07792 422909

Rachel on: 07956 908454

## APPLE LANDSCAPES and APPLE FENCING

[www.applelandscapes.com](http://www.applelandscapes.com)

**QUALITY SERVICE AT AFFORDABLE PRICES**

**Patios • Paths • Walling • Dry Stone Walling • Drainage Work**  
**• Indian York Stone Paving • Railway Sleeper Beds**

**Garden Tidy Ups etc. No job too small**

**Fencing & Gates Supplied Only**  
**or Supplied & Fitted**

**Only Quality Materials Used**

**FULLY INSURED**

Call for free quote

**01246 237505 • 07782 167540**

## French Tuition

Wanting to learn another language at home?

Available from a native and experienced  
person living locally.

Beginners to advanced.

Tel Anne on **235 297** or **07796 326752**



Tel/Fax: (0114) 255 4689

Mobile: 07831 802539

**TRISTAN SWAIN**

**LANDSCAPING AND MAINTENANCE**

UNIT C4

Sheaf Bank

Business Park

20 Prospect Road

Sheffield S2 3EN



**B.K. JEAVONS**  
**PAINTER & DECORATOR**



Interior  
Exterior  
Decorating  
No Job too  
small

Tel: 01246 416484

and mobile 07882 278306

**M. Scriven**  
(FRUITERAMA)

**MARTIN SCRIVEN**

**HIGH CLASS FRUIT**  
**& VEGETABLES**

37, Baslow road

Tel. 236 7116

Orders Delivered







# GWS

Technology Solutions



PC Problems/ Repairs/ Servicing No Job Too Small  
Wireless & Internet Setup New PC's & Upgrades  
PC Setup/Data Transfer Safe PC Disposal Tuition  
Software/Hardware For All Your PC Needs

**Guy Senior**

Phone: 0114 2352662 Mobile: 07890030453

Email: [guy@gwstech.co.uk](mailto:guy@gwstech.co.uk)

Web: [www.gwstech.co.uk](http://www.gwstech.co.uk)

GWS, 5 Conalan Avenue, Bradway, Sheffield S17 4PG



253 Baslow Road, Sheffield, S17 4DU  
Tel: 0114 2360 583 Mobile: 07801 346 455

## R.M.M BUILDING SERVICES

### 25 YEARS EXPERIENCE

All types of building work carried out including- Drop kerbs, block paving (drives, paths, etc), extensions, general building repairs and maintenance.

Phone Rob on- Mob- 07906108567

Home-2352190



### Garden Services & More

Lawn mowing, strimming, weeding, turfing, leaf clearing and lawn care. Hedges trimmed, reduced in height or width. Tree felling and pruning. High Pressure cleaning of driveways and patios.

Phone Bruce on Tel: 0114 2356708 or  
Mob: 07855752761



## R.S. HEATING & BUILDING CO

EST. 1971

### HEATING DIVISION:

Experienced Installers of condensing, combination and regular boilers. Systems fully guaranteed. Complete after sales service. Also Bathrooms, showers and small plumbing works.

### BUILDING DIVISION:

Loft conversions, House renovations including general building, joinery, plastering, electrical decorating etc.



13 Overcroft Rise, Sheffield, S17 4AX  
Tel:- 0114 236 4421  
Reg. Office:- 62 Machon Bank, Sheffield, S7 1GP  
Te:- 0114 2559425  
Fax:- 0114 255 9431  
Email: [enquiries@rsheatingandbuilding.co.uk](mailto:enquiries@rsheatingandbuilding.co.uk)  
Web: <http://www.rsheatingandbuilding.co.uk>

## Dronfield Landscapes



Gardens cleared and maintained, Lawns mowed, Turfing, Tree felling & pruning, Hedges trimmed & reduced, Pond maintenance, Fencing etc.

for free quotation call

Chris on: (0114) 2746158 Mobiles: 07976072785 or

Richard on: 07789497104

8am-6pm mon-fri

HazelBarrow Farm, Norton S8 8BA



## Nigel Watson



### Carpenter and Joiner

Fitted kitchens, sliding wardrobe doors with bespoke interiors, internal and external doors supplied and fitted, new handrail and spindles, laminate and wood flooring, locks, architraves, skirting board, stud walling, boxing off etc.

For a reliable and quality service

TEL: 0114 236 4778

MOBILE: 07971 528149



## Got a computer?

### Having Problems?

Is it running slow? Stops responding?  
Having problems running the latest games or applications? Broadband installation?

### Give me a call!

I'm available for home visits at any time including evenings and weekends. I can also suggest upgrades to improve performance, or even build you a system to your specific requirements.

**Tim Brown**

Building, Installation, Upgrading and Troubleshooting Computer Systems  
Over 25 years professional experience

Phone: 0114 2472619 Fax: 0870 7060080

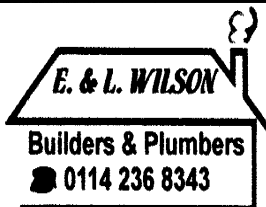
Mobile: 078 17464703 Email: [service@timbrown.plus.com](mailto:service@timbrown.plus.com)

## Dronfield Landscapes

Logs and woodchippings  
For Sale

Ring for details  
Chris on 0114 2746158  
Mobile 07976072785

Richard mobile  
07789497104



Central Heating  
Domestic Plumbing  
Glazing, Double Glazing and Glass  
House Maintenance  
UPVC and Wood Windows & Doors  
Mini Digger & Driver, Muck Shifts, Footings Etc.



## TOTLEY PRIVATE HIRE

24HR TAXI SERVICE  
ADVANCE BOOKINGS TAKEN  
LOCAL • LONG DISTANCE • AIRPORT

Tel: 0114 283 9692  
Mobile: 07974 355528

Domestic electrical work carried out by  
City & Guilds and 'Part P' qualified

## LADY ELECTRICIAN

- \* House rewires \* Replacement fuse boards \*
- \* New sockets and lights \* Telephone points \*
- \* Security lighting \* Pond pumps \* Deck lights \*

All work guaranteed and  
fully insured

No job too small  
For a free quote, without obligation

ring Mandy on 07788-544225



## Tiling, Plastering, Plumbing & Complete Bathroom Fitting Service

Tel: 0114 274 6775  
07738 688807

- ◆ Under Floor Heating
- ◆ All Aspects of Home Improvements & Maintenance Work Undertaken
- ◆ Competitive Prices
- ◆ NVQ Qualified
- ◆ No Job Too Small
- ◆ Fully Insured & Guaranteed

A1tilingandplastering.co.uk  
33 Glen View Road, Greenhill, S8 7SF

## Hypnotherapy

Weight, confidence, smoking, stress,  
phobias, anxiety, panic, sleep, etc...

Call 235 1985 Totley

www.sheffieldhypnosis.co.uk



Paul Peace



The  
British  
Psychological  
Society  
Chartered Psychologist



Karen Bartle

Creating opportunities with disabled people.

Registered Charity No. 218186

## Leonard Cheshire Disability

Leonard Cheshire Services in Offers choice & opportunity to people with disabilities. A Specialist Unit for the Younger Disabled. Residential & Respite Care - Single Rooms Day resources - Aromatherapy - Reflexology - Physiotherapy - Toning Tables.

Activities include: - Arts & Crafts - Computers - Cookery - Shopping Expeditions - Theatre Outings - Church. Further details can be obtained from - The Service Manager, Mickley Hall, Mickley Lane, Totley, Sheffield S17 4HE. Tel. 0114 236 9952 Fax. 0114 262 0234

The Care at Home Service supports disabled people who wish to remain in their own homes.

We provide flexible care packages from 1 hour to 24 hours meeting individual needs. The service operates throughout Sheffield.

Our service includes: - help with getting up and going to bed, dressing, washing, bathing, shopping, cooking, light household duties.

Further details from: - The Care at Home Manager Tel. 0114235 1400 Fax 0114 235 1499

## John Heath & Sons

AN INDEPENDENT FAMILY FUNERAL BUSINESS

Sometime.....

You will probably have the responsibility of making funeral arrangements. No one looks forward to this responsibility, but the death of a family member or friend brings with it an obligation that must be met. There are people who can help you meet this responsibility. We have been helping people combine the different aspects of the funeral into a meaningful service for over 125 years.

Please Call Day Or Night

(0114) 272 2222

Head Office - Earsham Street

Also at Meadowhead, Ecclesall Rd,  
Crookes and Stannington

www.johnheath.co.uk



## CHARISMA BLINDS



For  
Windows  
With Style

Sheffield Factory Showroom  
106 PROSPECT ROAD  
HEELEY, SHEFFIELD

Sheffield (0114) 258 5496  
Rotherham (01709) 512113



## TOTLEY & DISTRICT DIARY

<b>MONDAYS</b>	<b>COFFEE MORNING</b> , All Saints' Church Hall, 10am-noon <b>TAI-CHI</b> , United Reformed Church, Totley Brook Road, 11.30am-12.30pm <b>RAINBOWS and GUIDES</b> , All Saints' Church Hall, 5.45pm-9pm
<b>TUESDAYS</b>	<b>COFFEE MORNING</b> , Totley Rise Methodist Church Hall, 10am-noon <b>KEEP FIT &amp; COFFEE</b> , For the not-so-young, Bannerdale Centre, Carterknowle Road, 10.15am, Phone 258 5364 <b>WOODSEATS ADVICE CENTRE</b> , Drop in service, free, impartial, and confidential. TR Methodist Church, 10am-noon <b>CRAFT GROUP</b> , Totley Library, 2pm
<b>WEDNESDAYS</b>	<b>COFFEE in the LIBRARY</b> , 10am-11.30am <b>TODDLER GROUP</b> , 10am-11.30am, All Saints' Church Hall. Details tel. Andy Holmes 0114 236 2088 <b>HEALTH WALKS</b> , 10.30am, Totley Library foyer. Phone Sue, The Health Walk Ranger: 0114 283 9195 <b>MODERN SEQUENCE DANCING</b> , All Saints Church Hall, 8pm-10pm
<b>THURSDAYS</b>	<b>CHAIROBICS</b> , Suspended until further notice <b>NCT COFFEE GROUP FOR DORE TOTLEY &amp; BRADWAY</b> , 10am-noon, For mums & babies/toddlers, meeting in various locations, Phone Lucy Street 07837 000405 or email: <a href="mailto:lucy@streetr.plus.com">lucy@streetr.plus.com</a> for further details <b>PUSHCHAIR CLUB</b> , Totley Rise Methodist Church Hall. 1.30pm-3pm. Tel. 236 3157 for further details <b>PILATES CLASS</b> , United Reformed Church, Totley Brook Road, 6.15pm-7.30pm, Phone Emer Coffey 07792 422909
<b>FRIDAYS</b>	<b>PILATES</b> , The Old School, Dore, 10.45-11.45am & 12-1pm. Phone Teresa Tinklin 07906 312372
<b>SATURDAYS</b>	<b>MODERN SEQUENCE DANCING</b> , All Saints Church Hall 2 <sup>nd</sup> . And 4 <sup>th</sup> . Saturdays 8pm-10pm

### OCTOBER

**SAT 1st SATURDAY NIGHT LIVE**, Dennis Vincent, Heatherfield Club. 8.30pm. Come & play Play Your Cards Right. Non-members welcome  
**SUN 2nd CASTLETON FARMERS MARKET**, the Village Hall, 10am-3pm  
**TUE 4th FRIENDS OF GILLFIELD WOOD**, 7-9pm, Totley Library  
**SUN 9th MINIATURE TRAIN RIDES**, Abbeydale Road South, First train 1pm - last train 5pm (weather permitting) [www.sheffieldsmee.co.uk](http://www.sheffieldsmee.co.uk)  
**SAT 15th SATURDAY, BARN DANCE**, with Pie & Pea Supper, Totley Hall Farm, Top Barn, 6.30 -11pm, full details page 3  
**SAT 15th SATURDAY NIGHT LIVE**, Sammy Gale, Heatherfield Club. 8.30pm. Come & play Play Your Cards Right. Non-members welcome  
**WED 19th FLOWER ARRANGING DEMONSTRATION**, Holmesfield Village Hall, 7.30pm, further details from Diana 0114 237 7601  
**TUES 18th TOTLEY TOWNSWOMEN'S GUILD**, 'Role of the Woodland Trust', Peter Downey, Totley Rise Methodist Church Hall, 10am  
**SAT 22nd AUTUMN CRAFT FAYRE**, Mickley Hall, 2-4pm, details page 4  
**WED 26th TOTLEY HISTORY GROUP**, Totley Library, 7.30pm, open discussion meeting, all welcome  
**THU 27th SHEFFIELD FARMERS MARKET**, 9am-4.30pm, Fargate  
**SAT 29th ANTIQUE FAIR**, 10am-4.30pm, St Johns Abbeydale Church Hall, refreshments, ample parking. In aid of Totley Beavers, Cubs & Scouts.

### NOVEMBER

**TUE 1st FRIENDS OF GILLFIELD WOOD**, 7-9pm, Totley Library  
**SUN 6th CASTLETON FARMERS MARKET**, the Village Hall, 10am-3pm  
**SAT 12th SATURDAY NIGHT LIVE**, Trevor Allen, Heatherfield Club. 8.30pm. Come & play Play Your Cards Right. Non-members welcome  
**TUES 15th TOTLEY TOWNSWOMEN'S GUILD**, 'Christmas in the Dales', Andrew Firth, Totley Rise Methodist Church Hall, 10am  
**SAT 19th COFFEE MORNING**, 10am-12Noon, Transport 17, 172 Baslow Rd  
**WED 23rd - SAT 26th T.O.A.D.S. AUTUMN PRODUCTION**, St John's Church Hall, 'Play On' 7.30pm further details page 11

### TOTLEY INDEPENDENT FOR NOVEMBER

The next issue of the Totley Independent will be available from the usual distribution points on

**SATURDAY 29th October 2011**

**COPY CLOSE DATE for this issue will be**

**SATURDAY 15th October 2011**

Editor: **Ian Clarke**  
 Tel. No: **235 2526** or Email: [editor@totleyindependent.co.uk](mailto:editor@totleyindependent.co.uk)

Advertising & Distribution:  
**John Perkinson**  
 Tel. No: **236 1601** or Email:- [advertising@totleyindependent.co.uk](mailto:advertising@totleyindependent.co.uk)

Items for publication may be left or sent to:  
**2, Main Avenue, Totley, Sheffield, S17 4FG** or  
**Totley Library**

[www.totleyindependent.co.uk](http://www.totleyindependent.co.uk)

**PRINTED by STARPRINT**

## CLEARVIEW STOVES

### Pioneer 400 - weight 125kg



This is by far our biggest selling multi-fuel stove. For a typical room size 13ft x 15ft! Producing from 1 to 5kw of heat output - being highly controllable with an updraft and a unique patented down draft to burn the tar off the glass - keeping it crystal clear - hence the name CLEARVIEW. One log lasting up to 1.5 hours given super efficient outputs up to 80% (an open fire runs at 15% efficient!). Seven choices of colour to compliment your decor with optional leg heights from 2 to 10 inches. Clearview Stoves were the worlds first to be approved for burning in 'Smoke Controlled Areas'. We have over 200 installations around Sheffield. We are often told by many of our customers that "It's the best thing we have ever bought"

Showrooms at Burgin Conservatories 302 Abbeydale Road S7 1FL  
 Open Tues-Sat 10-5pm • Sundays 10-4pm  
[www.clearviewstoves.com](http://www.clearviewstoves.com) • [www.burgin-conservatories.co.uk](http://www.burgin-conservatories.co.uk)  
 or please telephone Graham Burgin 07973 321 075  
 for advice or FREE QUOTATION

## Starprint

601 Abbeydale Road, Sheffield 7. Fax: 0114 258 8599

**DESIGN & PRINTING of**

- LETTERHEADS • BUSINESS CARDS •
- BOOKLETS & PADS •
- INVOICES • LEAFLETS •
- CARBONLESS SETS • BROCHURES •
- RAFFLE TICKETS •
- WEDDING STATIONERY •
- ENVELOPES & POSTCARDS •

**SPECIALISTS IN THERMOGRAPHY  
 FOIL BLOCKING AND ENCAPSULATION**

**0114 258 0707**  
**For a Quick Quotation**