

TOTLEY INDEPENDENT

PUBLISHED CONTINUOUSLY SINCE 1977
NOVEMBER 2011 No. 348

www.totleyindependent.co.uk
20p.



General View Heatherfield Totley. 147. 26.

MAIN AVENUE?

Can you make this one out? Supposedly a view of Heatherfield and Green Oak leading to Main Avenue before any houses. Could the farmhouse/barn in the middle/back be the house that still stands at the corner of Sunnyvale Avenue/Main Avenue – number 54 Main Avenue? If so, that could make the row of houses which run left to right in the back Baslow Road, but sadly the photo isn't clear enough to recognise any definite landmarks.

We have a claim from the owner of the Birch Grey Morris Minor Convertible in the photo from last month's issue, which he purchased in 1961. He doesn't want to be named for fear he could be issued with a ticket for parking on the pavement – we think he could claim statute of limitations after 50 years!

Totley Residents Association Update

Firstly sorry that there was no update last month in here, hopefully I've had my share of whatever virus it was and I get left alone by the horrible germs now.

I am beginning with congratulations and thanks to all who helped organise and run the Totley Show. I hear it was an amazing success and the whole community pulled together to ensure it was as enjoyable as it has been year on year. I'm just sorry I couldn't be there.

I am sorry to say that Stephanie Coe who joined our committee in May has had to resign due to other commitments, but I wanted to thank her from all of us. Steph was the driving force behind the Totley Matters Forum and it wouldn't have happened without her commitment or enthusiasm, thanks Steph! We will still see her but she will be missed in meetings.

The Barn Dance that was planned was postponed until the New Year, we'll make sure you know the date in good time and hope to see many of you there.

The bulb planting is taking place again around Totley, and Jim Higgins has kindly offered to organise it for us. We have also had a kind offer of help from Cherrytree and hopefully the dates and availability of all will see some joint working to see Totley in bloom. The TRA are appreciative of this help, thank you.

We have been gathering your views on what is needed in Totley, I have suggestion boxes that will be in and around Totley so please ensure that you fill in and post your suggestions.

There seem to be 2 main issues that are constant, activities for people and families and the need for a community centre in Totley. We really need a social hub and somewhere that Totley folk can call their own. The TRA met with Friends of Green Oak Park to discuss what was happening in the park, and the possibility of a building being available. All present agreed that a Community Centre is going to be of enormous benefit to Totley and the idea of an independent body separate from the TRA or FoGOP should be formed to begin looking at the initial planning

process and what is needed. More to follow in January, so if you would like to be involved please let us know.

TOTLEY NEEDS YOU!!!

This is a plea from Totley Residents Association. We would love to run some activities and events in Totley, but we really need volunteers. You don't need to dedicate hours or even come to meetings, but we are in need of additional help. We also need committee members. We are hoping to hold a Christmas Party for Older People and run some events for children but as most of us work we are asking people if you have any time free at all, we would really welcome your input. These great ideas cannot come to fruition without your help!

The committee is so passionate about making a difference, come along and meet us; it's quite infectious you know. We normally meet in the Cross Scythes, the third Thursday in the month at 7.30pm. Please feel free to come say hello.

As you will see from her update, Hetty has been working really hard and been back to school to launch a logo competition for the TRA. I hope this encourages young people to take an interest in what we do and give us ideas for the future, thanks for all your hard work Hetty. I am also going to set up Totley Youth Council and will be working on this next month.

Please get in touch we love to hear from you, email Kathryn Higgins totley@hotmail.co.uk use the forum - <http://totleymatters.proboards.com/> and we now have a Facebook page open to all, just search Totley Residents Association. I can also be contacted on 07709 780 606.

Kathryn Higgins Chair TRA

Congratulations to Mandy Reynolds!

Totley Independent advertiser - electrician Mandy Reynolds of 'Mand Made' is the winner of the best Which? Local business 2011.

Mandy got her award from broadcaster Natasha Kaplinsky at the Which? Awards ceremony in King's Place, King's Cross, London in June.

The awards recognise companies across the country who show outstanding service to customers.

Mandy said: 'I'm just so thrilled to have won. It's so unexpected. It means so much that my customers have taken the time to go online and write a review for me. Some of the things they've said are really touching. I'm going to have to email them all to thank them.'

Five years ago Mandy stopped working in the financial world and retrained as an electrician. She's already built up a glowing reputation, with Which? Local users praising her 'friendly, reliable and thorough service' and all rating her five stars out of five.

Natasha Kaplinsky said Mandy's was the award she was most looking forward to handing out at the ceremony.



T.O.A.D.S.

Present

"PLAY ON"

written by Rick Abbot.

"Play On" is the next play to be performed by TOADS. The dates are from Wednesday, 23rd November to Saturday 26th November, and the venue is, as usual, St John's Hall, Abbeydale Road South, at 7.30pm.

This is the hilarious story of a drama group desperately trying to put on a play in spite of maddening interference from the author who keeps revising the script!

Call **0114 235 1206** to reserve your ticket - £4.00 or £3.50 for concessions - or contact any TOADS member.

The Old School House

I was interested to read the article on the Old Schoolhouse in the September edition of '**Totley Independent**' as my mother, Dorothy Simons (nee Williams) lived there as a small child.

Mrs. Rundle asked if any one knew who had lived in the Old Schoolhouse after her Uncle Arthur Bradley and mentions Mrs. Turner who lived in the cottages opposite and a family called Smith. Mrs. Turner's daughter Elsie and her husband, Jack Williams, together with young Dorothy moved in to the house after Mr Bradley died. They subsequently moved to Aldam Road in about 1932, at which point the Smiths moved into the house.

Since her eyesight has declined my mother now lives with us in London. My husband or I read 'The Independent' to her each month.

With Best Wishes

Erica Hillman

THE FORTUNES OF

Downton Abbey

AND

Totley 1914-18

HAD MANY PARALLELS

Read our Totley village history of this period in

Totley War Memorial WW1 1914-1918

The story of the men from Totley who gave their lives
in The Great War

Published by Totley History Group



Available at Totley Rise Post Office, Seasons and
Dore Post Office price £4.50



Transport 17

I was very honoured on 1st October to be presented with a cheque for £1737 from the Open Garden Team. It was a great opportunity to meet their members and we decided it was to go to our new vehicle (they only cost approximately £52,000!) as it is becoming harder and harder to gain funds from the various charitable organisations that we usually approach.

We had a very enjoyable day at Totley Show, which was well attended, so a big thanks to Mr and Mrs Firth's organisational skills and the generous people who supported the event.

We are pleased to report that our two new driver/escorts are settling in well and another new person has joined the team. We would still welcome anyone who is interested in joining the team.

You may believe that the weather change is climatic - not altogether true - Margaret and Danny Barlow have joined a choir, Make of that what you will but one can wonder!!! They are very happy and as expected are already making an impact on their new community.

Felicity Revill

Update on TRA Logo Competition

The Logo Competition, open to all children between 4 and 11 years of age, living in Totley, was launched on Monday 3rd October. We are delighted with the enthusiastic response.

I attended both the local schools and spoke to the children at their School Assemblies.

The Competition is divided into 3 Age Groups, Year 2 & under, Years 3 & 4, Years 5 & 6. The closing date is Friday 4th November and for all Totley children who go to other schools, there is information at Totley Library with hints and tips and you can hand your designs to the Library Staff.

A Panel of Judges from various areas of Totley will choose the best 6 from each Age Group. These will be on display in the Library for residents to vote for the design they would like the TRA to adopt.

There will be prizes for the top 3 in each Group and a special prize for the overall winner.

We are sure we are going to see outstanding art work. Heather Moran, TRA Secretary

TOTLEY RISE BADMINTON CLUB

Totley Rise Badminton Club was formed in 1947 and has played at St John's, Abbeydale Church Hall since then. Club nights are on a Tuesday evening between 7:45pm and 10pm from late September until Easter. We usually have a Christmas social and an annual dinner in April.

Our current players range in age from the 40s to mid-80s and whilst we take our games seriously they are played at a "social" level. A few of our players have retired recently and we are looking for new members. If anyone is interested in coming down one Tuesday to have a look at us and play a few games please call John Beard on 235 1129 or Norman Rolfe on 236 1999 and we'll be happy to arrange it.

Norman Rolfe

Totley's Townswomen's Guild

Members celebrated the Silver Anniversary of the Guild with a lunch, dining out on 4 October. Recognition of long service was given to 6 founder members who were awarded their badges from the National headquarters. They were congratulated and thanked by the Totley Chairman for having started the Guild 25 years ago.

Looking ahead Christmas is fast approaching. Guild celebrations are starting early with a talk in November called Christmas in the Dales by Andrew Firth, followed in December by the Christmas meeting. So, ladies, if you have got the time between the extra shopping and the card writing come along on Tuesday, 15 November at 10am. The meetings are held at Totley Rise Methodist Church Hall at the corner of Baslow Road and Grove Road. Visitors are very welcome (£1 charge). Further information is available from Iris Rodgers (Chairman), tel 236 8659 and Dorothy Murray (Secretary) tel 235 1848.

NEW VICAR AT ST. JOHNS ABBEYDALE

Rev. Canon Peter Ingram will be licensed as Priest in Charge at St. John the Evangelist Parish Church Abbeydale, Abbeydale Road South on Wednesday, 16th November at 7.30 p.m.

Peter Ingram became Vicar of Holy Trinity, Millhouses in September 2005, having previously served for 13 years as Rector of Adwick-le-Street with Skelbrooke, near Doncaster. He is an Honorary Canon



of Sheffield Cathedral, chairs the Diocesan Advisory Committee for the Care of Churches, and is Area Dean of Ecclesall Deanery. Peter is married to Joan, who is Clinical Services Manager at the

Royal Hallamshire Hospital, and they have a daughter, Stephanie, and a son, Tim.

Peter will be combining this role with that of vicar of Holy Trinity, Millhouses

Councillor Surgeries

Liberal Democrats:

2nd Monday in the month 6.00-7.00 p.m., Totley Library, Baslow Road and 2nd Saturday in the month from 10.30 a.m. to 12.00 noon, Dore Old School Hall, Savage Lane, Dore Contact details:

Keith Hill 235 2289 Email: keith.hill@sheffield.gov.uk,

Colin Ross 235 1948 Email: colin.ross@sheffield.gov.uk

Joe Otten Email: joe.otten@sheffield.gov.uk

**Totley Independent Website:-
www.totleyindependent.co.uk**

Multi-agency operation in Dore and Totley to tackle metal thefts

Police and partners in Sheffield have carried out a small scale multi-agency operation to tackle metal thefts in the locality, under the guise of Operation K-Anchor.

Metal thefts are a concern for many members of the public in the area and in response to those concerns, a multi-agency operation was carried out on Thursday 6 October 2011. Future operations are also to be conducted with some other partner agencies being involved such as the DWP (Fraud) teams.

This operation involved a lot of planning and hard work by the Broomhill & Sharrow Safer Neighbourhood Team (SNT), in bringing this operation and partners together.

The partners involved in the operation included, Safer Neighbourhood Team (SNT) officers from the west of Sheffield, along with officers from specialist departments, Road Policing Group and partner agencies including Vehicle and Operator Services Agency (VOSA), and the Environmental Protection Enforcement Team from Sheffield City Council.

The operation involved officers stopping and checking vehicles travelling to scrap dealers to ensure no stolen goods were being carried. Checkpoints were set up in the Baslow Road area of Totley and Ecclesall Road South area of Dore and any vehicles that may have been of interest to the checking teams were stopped. Many thanks to the Totley Methodist Church for the use of their car park, and facilities.

As a result of this one day operation 19 vehicles were stopped and checked, and several HGV trucks inspected at the roadside.

Under the Vehicle and Operator Services Agency 5 prohibition notices were issued for various offences including mechanical defects, drivers hours, tachograph and vehicle condition prohibition notices.

Under the Environmental Protection Enforcement Team, 5 waste carriers licence production notices were issued and advice given to people stopped to get themselves registered if they were not already.

The local community Officer PC 753 Kevin Marsh states, "This was a partnership operation to tackle a problem that many people in Dore and Totley feel quite strongly about. There has been a vast increase in the scrap vehicle numbers circulating the local area. Therefore we are determined to keep looking at initiatives to stop those who feel that stealing metal is an easy crime. This kind of operation is an excellent example of partners working together to address the serious issue of metal thefts. I would urge anyone with any information about this type of crime to report it to the police."

If you know anyone committing this type of crime please report it to South Yorkshire Police on 0114 2202020 or after 4th November use 101, alternatively call Crimestoppers anonymously on 0800 555 111.

Christmas Fair

Sat. 3rd December 2011

10am – 12 noon

Dore Old School

Sale of Books, CDs, DVDs, bric-a-brac, gifts, cakes and refreshments.

PUZZLE CORNER

Four Office Workers.

Ann, Fiona, Janet and Mary work in the same office. As I record these facts in October 2011, some cynics may suspect they have been specially appointed!

All four have had their birthdays for this year and now each of their ages in years is a prime number. Their ages and the dates of their birthdays follow the same order as their names alphabetically.

When their ages are added in pairs the resulting numbers have some factors (other than 1) in common as shown.

Ann + Fiona and Janet + Mary	2 in common
Ann + Janet and Fiona + Mary	3 in common
Ann + Mary and Fiona + Janet	1 in common

When the birthday dates are written in the form 03.07.11 (3rd July 2011) and the three numbers multiplied ($3 \times 7 \times 11$) each result is the same as their ages added together. Can you find the age and birthday date of each?

Don Ashford.

Totley Primary School Update

After my 10th Totley show at our school it's the first I've had a stall and have been able to see how much hard work is put into holding this every year. Be it the organisers or the volunteer helpers, everyone worked so hard. I ran a stall selling the veg and jams that were produced by the school's gardening club. My thanks must go to Christine Steel who gave me a break to look round the other stall's and displays to find, upon my return, my stall was empty. I think this lady could sell ice cream to the Eskimos or sand to the desert tribes. With the money raised we can buy some seeds for next year to grow even more produce. It's a pity the show is late in the season as our hanging baskets and tubs, which won silver in the Lord Mayor's Sheffield In Bloom, had faded. The day was a roaring success and the school was left clean and tidy again, thank you to all who helped and all that supported the Show.

Our new library will be up and running shortly, it's looking for very nice and will be a good area to access reference books for class work.

The PTA Barn Dance in October was well supported and a good time was had by all with good food and good music. There will be a spooks and sparks disco on the 3rd November for the kids between 5:30pm and 7:30pm, tickets are on sale from the office.

Y6 class made their annual camping trip to Thornbridge in September and for the first time I could not cook their BBQ. As the old saying goes 'Kids get a cold, women get flu and men get on with it' but unfortunately this time I think I had pleurisy or pneumonia so I had to send my YTS Mr Chris Measures to cook the BBQ and I'm told he did a wonderful job. Many thanks for stepping up to the plate at such short notice.

That's all for now.

Allen Miller,
Building Supervisor

Farming Scene

Have you ever seen a cat and a fox hunting together? I have. There have been quite a few rabbits around the farm over the summer months but they seem to have declined in numbers just recently. On Thursday morning I was in our "Quarry Field" getting some ewes into a pen ready for the scanning man to tell us how many lambs they were carrying. This was just as it was getting light at about 7am. As I went around the back of the Quarry I saw a fox and a cat, some 15 yards apart, lying on the ground, waiting for some rabbits to emerge from their burrows 10 yards away. You would think that the cat would know better as the fox could easily have turned on it and had a nice warm breakfast. I wonder what would have happened if one rabbit had appeared and they both went for it. It does of course explain why the rabbit population seems to have decreased.

It was the Texel ewes that are due to start lambing on 20 November that were pregnancy scanned. The number of lambs conceived is down on last year's crop. We expected this as the ewes were a bit on the fat side when the tups were introduced. Some were at score 4, when really they needed to be at 3, in good condition but not really fat. There were 7 ewes not in lamb which will be put back to the tup along with Texel ewes at the end of October. We have cut down on the number of Texel ewes and now have about 100 to lamb in March/April time. This will mean that our spring lambing work-load will be much reduced.

The rise in scrap metal prices and livestock values has been responsible for thefts from farms increasing rapidly just recently. To date our only loss has been a metal trough located in our Lane Head field which we had been using to feed the cow and donkey. One farmer in the area has had his vehicle diesel tanks drained. Another had had the catalytic converter on his 4X4 stolen twice. Thousands of sheep have been rustled in North Yorkshire and one group of 1,500 ewes and lambs have gone missing in Nottinghamshire. This must have been a well-planned operation involving several people plus 3 lorries. I suspect that they had already sold these and were stolen to order. The same is happening with tractors, telehandlers etc. They very quickly find new homes in this country, Ireland or Europe. Quad bikes are another bit of kit that thieves can easily dispose of. Gone are the days when half a dozen sheep disappear in the back of a transit van for the personal use of the thieves.

They have forecast snow on the hills for next week so winter is on its way again. Looks as if it could start in October this year rather than November.

Edwin Pocock

Scout Lottery

1st Totley Scout Group Lottery
September Draw, the first of the new year until August 2012.

1st Prize No 37
Russell Hobbs 360
Stainless Kettle
Mr and Mrs Newbould
The Quadrant

2nd Prize No 34
£10 Voucher
Mr and Mrs
Hebblethwaite
Lane Head Road

It is not too late to join the lottery, still 11 months to go. Ring 248 9854 to join.

Pete Casson

Totley Scouts

This time of year is one of the busiest for the Scout Group. Not only do the children have the normal weekly activities, but also take part in a number of weekend events.

On the 23rd October some of the Beavers, Cubs and Scouts will have taken part in the Bug Hunt which the Friends of Gillfield Wood organised. At the time of writing we are still looking forward to the event. And on the 29th October is our twice yearly Antiques Fayre at St Johns Church Hall. This is a major fundraiser for us and I hope it is again. I shall report on both of these next time.

Another important event in the Scouting calendar, and in most other people's, is Remembrance Sunday. As usual the Scout Group will take part in the service at All Saints Church.

We were very successful earlier this year in collecting Tesco and Sainsbury vouchers and have ordered a good selection of sporting equipment for use by the children. We should have received everything by the time this article is printed. We have also been successful in applying for 30 trees courtesy of the Woodland Trust. We take delivery in November. I understand they will be saplings and not fully grown trees. They will be used to enhance our corner of Gillfield Wood. We have not yet worked out how many we need at the Scout Hut so we may be able to pass some on to the Friends of Gillfield Wood. We shall also be applying for more trees next year.

In my last article I talked about becoming more visible in the community. We have already put in our diary the dates of next year's Totley Open Gardens. We are now moving on to see how we can co-operate with the Friends of Gillfield Wood. After all, the Scout Hut is located on the edge of the wood and the wood is used for lots of activities. Meetings are due shortly and this again is something I shall report on more.

Richard Frost

Chairman

1st Totley Scouts

TotleyChair@aol.com



WEDNESDAY NOVEMBER 23RD

TOTLEY LIBRARY 7.30PM

THE TURNPIKE ROADS OF TOTLEY

AND DISTRICT

TALK AND SLIDES BY HOWARD SMITH

MEMBERS £2, NON-MEMBERS £3

WEDNESDAY DECEMBER 14TH

VENUE TO BE DECIDED

MIKE WILLIAMSON'S CHRISTMAS SHOW

AND SOCIAL EVENING

FESTIVE STORIES AND ANECDOTES BY OUR POPULAR

LOCAL IMPRESSARIO

Friends of Green Oak Park

Let us begin with the good news that we have been accepted as a charity for tax purposes by HM Revenue and Customs with effect from February 2011. This will be a great help for the future of the park.

Volunteers have continued working every Tuesday morning and at other times. Do come and give us a hand.

In an attempt to attract more wildlife, we have now put three bird tables in various parts of the park. Please feel free to put food on them. The trees are not very user friendly for birds, so we plan to make nest boxes to give them a helping hand for next spring.

Some of us have already raided our garages for spare wood for the bird tables, so I am appealing for help to make the boxes. If you have any wood which you could donate please let us know. The wood must not be painted or treated with harmful chemicals as this could harm the birds. Thank you to Jim Higgins who has made the bird tables.

More trees will be planted near the climbing boulders and at the Mickley Lane entrance on 29th November. There will also be a tree identification trail led by Park Rangers on Sunday 27th November. These activities will be part of National Tree Week. Details are not yet confirmed so look out for posters nearer the time.

Work continues to improve the Lemont Road entrance. A dry stone wall has now been constructed to tidy up the area. Thanks to Edwin Pocock for providing the stone and Jim Higgins for building the wall.

You may be wondering why some of the grass is dying. It has been deliberately killed, in preparation for next spring. Hardy annual seed will be planted which, when it germinates will create a stunning display of flowers from late June until the autumn.

Several years ago Nigel Dunnett came to Sheffield University as a student and stayed. The floral displays which can be seen in Sheffield and other parts of the country were developed by Nigel, following intensive trials carried out initially in the Botanical Gardens.

Nigel, now Professor Dunnett along with his colleagues are known world-wide. They have been chosen to do the landscaping for the Olympics. Nigel and his team have been working on the project design for the last few years.

This year they carried out a trial run of the meadows. All must be perfect for 27th July 2012 when the opening ceremony takes place. Look out for an hour long programme coming soon on a Friday evening about the Olympic landscaping. Nigel has been giving us advice so our meadow will be wonderful too.

Our main project, the drainage, is still on hold. As park users know, the bottom part of the park and the children's playground are very wet in winter. For months discussions have taken place as to how the problem can be solved. Plans are now prepared and a team of volunteers are standing by waiting to be allowed to get on with the job. The work cannot be carried out without permission from the council. The tarmac in the children's playground cannot be completed until the drainage has been sorted out.

Avril Critchley, Chair FoGOP

PUZZLE CORNER

Solution to Four Office Workers

Ann 17; 8th Jan. 2011. Fiona 19; 4th Feb. 2011. Janet 23; 2nd April 2011. Mary 29; 1st Aug. 2011. Don Ashford

St John's Church Abbeydale

Special Services coming up in
the next few months



13th November Remembrance Sunday

10am Morning Prayer
11am Act of Remembrance

16th November

7.30pm Licensing of Rev. Canon Peter Ingram

27th November

6.30pm Advent Carol Service

18th December

6.30pm Carol Service – Nine lessons and carols followed by mulled wine and mince pies

24th December Christmas Eve

5pm Christingle
11.30pm Midnight Eucharist

25th December Christmas Day

9.30am Family Communion

Normal weekly services are:-

8am Either Morning Prayer or Holy Communion
10am Parish Communion. Provision for children is made on the 1st, 2nd and 3rd Sundays of the month either by way of Family Communion or Fish Club

SOCIAL EVENTS

Christmas Beetle Drive with Supper

Saturday 10th December 6.30pm

Entrance fee £1 for adults and 50p for 14 and under.

Supper will be £5 for adults, £4.50 - children under 14 but will need to ordered in advance.

Contact 236 4578

Carols and Quizzes

Friday, 16th December @ 5pm, Old Mother Redcap, Bradway

Thursday, 22nd December @ 5.30pm, Castle Inn, Twentywell Road

Friday, 23rd December @ 5pm, Abbeydale Sports Centre

Art Exhibition

By local artists **Christine Walker**
Simon Deeks

St Johns Church Hall, Abbeydale Rd.

Sat 12th Nov 2011,

10.30am-3.30pm



Refreshments
available

Free
admission



Choir brings festive cheer to St Lukes Hospice

THE award-winning Bolsterstone Male Voice Choir will be adding its voice to the celebrations at the annual St Luke's Hospice Festival of Light.

The Sheffield choir – the winners of the 2002 Llangollen International Eisteddfod – will lead the singing at the festival in the grounds of the hospice, at Little Common Lane, Whirlow, on Sunday, December 4.

Joining them for the selection of carols and festive favourites will be Festival of Light favourites the Holymoorside Brass Band.

The Festival of Light is one of the most popular events in the St Luke's calendar and sees the hospice grounds transformed into a winter wonderland by thousands of lights, all dedicated to loved ones.

Along with the community singing, mince pies, coffee, soup and mulled wine are served to the evening's many visitors.

Lights can be dedicated at a minimum suggested donation of £5 per individual or £50 for a company or organisation.

Last year the festival, which runs all the way through to Twelfth Night, broke all previous records, raising a final total of £42,000.

Officially switching the lights on this year will be St Luke's Hospice Action Group chairman Audrey Rose, who has been involved in the organisation of the Festival of Light since its introduction in 1998.

This year, for the fourth time, the Festival of Light will also be in Sheffield city centre with a tree of dedicated lights on the main concourse of Sheffield Station which will be officially launched on Monday, December 5.

More Scouting in Totley

I was in the Totley Scouts in 1938, before John Tinsdale and John Wood joined. Tinsdales took the grocers shop (run by Walter Evans at that time) at the top of Main Avenue. John Wood of course arrived in Totley when his father also John Wood came from Norton to be Headmaster at All Saints School. I remember him having a house built just before Main Avenue.

The Scout Master at that time was called Mr Aubrey. I believe his first name was Leslie and he lived on the Laverdene Estate. He was helped by another Rover Scout by the name of Epworth.

The Scout Hut was in what is now the car park at The Crown Inn

We used to go to camp some weekends in Farmer Kelk and Farmer Inkeringill fields both of Fanshawe Gate but as most of the scouts at that time were in the choir we had to be back to sing in the choir for the evening service at All Saints Church, otherwise the Vicar Rev Jerry Hutton would be rather displeased.

There was also a Lady Akela for the cubs, I cannot recall her name but she lived down Main Avenue, near Baggy Parker, her brother was also in the scouts.

I also remember going with the troop to Chesterfield Church for a special service and we walked there and back.

It is pleasing to know that scouting in Totley is still going strong.

J W Abson

Parish Church of St John the Evangelist
Abbeydale

CELEBRATION

400 YEARS Of The King James Bible

Narrative, dramatic readings
and Music

Saturday November 19th 2011
7.0 pm

Admission £7.50 (under 16 years £3.50)
Includes refreshments

Tickets: Phone 0114 2367283
Or write 55 St Quentin Drive Sheffield
S17 4PN (From 1st October 2011)

Proceeds to Churches for Youth S17 and
St John's Church

Friends of Gillfield Wood

Future Events.

There's a practical conservation day on Sunday 20th November, when the group will be halo thinning out some of the smaller trees around the large trees near the top of the wood. Meet at 9.30am at the wooden kissing gate at the top of the wood.

Public Meeting: Sheffield's Woodland History: Prof Mel Jones, 7pm at Totley Library 6th Dec (*also recent discoveries by the group about the history of Gillfield Wood*). All are welcome.

Contact Dave Gash on 0114 262 0564 for further details.

JM/SC/538
30th September 2011



Mrs A A Critchley
79 Baslow Road
Totley Rise
SHEFFIELD
S17 4DP

Dear Mrs Critchley

I write to apologise on behalf of Sheffield City Council for an error which appeared in the Notice relating to the decision of the Sheffield Standards Committee of 24 March 2011 which appeared in the Star Newspaper.

The Notice names you as complainant. This was incorrect as Totley Residents Association were the complainants. This was clear throughout the complaint process. Your name should have been followed by "on behalf of Totley Residents Association".

I would like to unreservedly apologise for this error on behalf of the Council, which I know has caused you distress.

Yours sincerely

John Mothersole
Chief Executive

TOTLEY HALL FARM

Totley Hall Lane, Sheffield

Live Nativity Plays with the Animals & Father Christmas

Saturday 17th December - Saturday 24th December



*Your children can dress up and
join in as we retell and act out the
wonderful Christmas story.*

Lots of time to hold the Lambs and ride
the Donkey.

Visit Father Christmas for your present.

Refreshments for all.

Early Booking is essential.

Call Jenny on 0114 236 4761

or for Details, Pictures, Dates, Times, Prices and Booking
form, please visit: www.totleychristmasfestivals.co.uk

OPEN GARDENS UPDATE

In October, Totley Open Gardens Association (TOGA) presented a cheque for £1,737 to Transport 17 for all the valuable work they do in providing older, isolated people with social contact at lunch clubs once a week. This sum was the proceeds of the open gardens event held in July last.

TOGA is now an independent organisation. The takings from the open gardens events go to charity, as determined by the group of gardeners who open their gardens each year. The decision as to where money will be donated is made in May each year. Totley Open Gardens has raised over £16,000 since it started 10 years ago.

2012 Totley Open Gardens will take place on Saturday 14th and Sunday 15th July.

Jennie Street
Tel. 236-2302 jennie@hadish.f9.co.uk

CAROLS BY CANDLELIGHT

You are invited to attend the Carols by Candlelight led by the Curbar and District United Choir at Totley Rise Methodist Church on Wednesday, 30 November at 8.00pm

JOURNEY TO BETHLEHEM 2011

Unbelievably it's almost time to make the Journey to Bethlehem again at Totley Rise Methodist Church. This year's dates are Saturday 10th and Sunday 11th December, with 30 minute tours running between 4-30 and 7-30. There are one or two changes to the journey this year, but many familiar elements remain: the Market Place stalls, the Shepherds (and their sheep), and of course, the most important of all, the stable with baby Jesus. Everyone is invited, and the tours are free, but we do ask that you book your tour in advance, and you can do this by calling 0114 2351001 after November 7th. We look forward to seeing you, your families and friends.

SHEFFIELD BACH SOCIETY

MONDAY 19 NOVEMBER 2011

Sheffield Bach Choir presents MENDELSSOHN MASTERWORKS including HYMN OF PRAISE and HEAR MY PRAYER with THE NATIONAL FESTIVAL ORCHESTRA AND SOLOISTS Joanne Dexter, Jenny Cowling & Ben Thapa at Sheffield Cathedral, Church Street, S1 1AA 7.30 pm

Tickets £12-15; Students £6

Box Office: 3 Tapton Mews, Tapton Crescent Road, S10 5EA and at the door on the night of the concert.

Accompanied under 16s are admitted free of charge - boxoffice@sheffieldbachchoir.org.uk

On-line booking from the Bach Choir Website: www.sheffieldbachchoir.org.uk

Sheffield Bach Choir presents some of Mendelssohn's most famous choral pieces culminating in the composer's magnificent Hymn of Praise (Lobgesang) - a work very rarely heard in full with the symphony that precedes it - acclaimed as the natural successor to Beethoven's Choral Symphony. Other repertoire includes the immortal Hear my prayer with O for the wings of a dove and the superb Lauda Sion.

MONDAY 5 DECEMBER

Sheffield Bach Choir presents Handel's MESSIAH and HEAR MY PRAYER with THE NATIONAL FESTIVAL ORCHESTRA AND SOLOISTS Phillippa Hyde, Alison Hudson, Stephen Liley, Alex Ashworth at Sheffield Cathedral, Church Street, S1 1AA 7.00 pm

Tickets £12-15; Students £6

Computers and Internet For Beginners Made Easy

Local tutor offering one -to-one training and support using your computer, in your own home, at your own pace. Learn about surfing the internet, order goods online, Skype, or to use your mobile phone. One off or ongoing classes. Vouchers available.

If you don't have time to teach your relatives, this may be a useful present.

Tel Anne on 0114 235 3297

Mark and Sally Fletcher invite you to

The Grouse Inn

Longshaw

Sheffield S11 7TZ

Meal times:-

Mondays 12.00 to 2.30pm

Tuesdays to Friday's 12.00 to 2.30pm and

6-30pm to 9-30 pm

Saturdays 12.00 to 3.00pm and

6.30pm. to 9.00pm (drinks - open all day)

Sundays 12.00 to 9.00pm

Phone 01433 630 423

R Rose & Co

Chartered Accountants & Business Advisors

Specialists at looking after the affairs of small businesses.

For a FREE initial consultation please contact Roger Rose FCA on **0114 281 2331**

From business start-ups and general accounting, to support and advice in business development and strategy, we provide services in our personal one-to-one service. To find out more please call 0114 281 2331.

621 Chesterfield Road, Woodseats, Sheffield S8 0RX
Email. info@r-rose.co.uk www.r-rose.co.uk

Mens Hairdressing by Karen

at

Hair by Patricia Barber

53 Wollaton Road,
Bradway

9am to 5pm Thursday

9am to 5pm Friday

9am to 1pm Saturday

appointment or walk-in

0114 236 6247

07984 021 033

GARDENING TIPS FOR NOVEMBER

It's raining again (mid Oct) the garden looks a bit soggy, we do need the rain as the last dry spell went really deep the soil needs a top up.

We still have a lot of colour in the garden, I suppose the rain will spoil some of the flowers which is to be expected at this time of year, we are getting the insulation ready for the greenhouse we have to buy a new lot this year as the old stuff is a bit grotty and well past its best and some of it is breaking up, it is worth while doing as it increases the temperature by around 10 degrees which is quite a lot in greenhouse terms, with a small heater it keeps the greenhouse frost free, unless we have a freeze like last season when we had to put another paraffin heater in but that was not enough, therefore we lost quite a lot of plants, let's hope it's not quite so bad this winter.

The falling leaves are making a mess all around, I do have an electric vacuum sweeper, but I can't manage it now as it is rather heavy especially when the bag is full it would suit a younger fitter person, please contact me if you are interested. We are having a bumper crop of apples, again the potash feed I put down earlier has paid off the bitter pip has not happened this year and they are much sweeter so you see it pays to give them a bit of TLC.

The veg plot is still giving us some fresh veg, the slugs are a pest (a bit chewy) slugs apart the flavour of home grown veg is still better straight from the garden to the pan" lovely".

The leeks and onions did well at the show some people have asked me how we get them so big, (here's the secret) it's a fairly long process it starts around Boxing Day, the traditional time for planting onion seeds though many gardeners start before then, leek seeds are planted about a month later. The seeds are not any old onions and leeks they are developed especially for exhibiting at shows, you can eat them of course they are a bit milder than the kitchen types.

You can also buy seedlings ready to plant out, or "bring on" in your greenhouse or cold frame, they look like large spring onions when they arrive this can save a lot of expense in providing heat to bring on your own seedlings, I've tried both methods and prefer to grow from seed, either is acceptable on the show bench.

The ground where you are going to plant these lovely seedlings needs a good deal of preparation but it is well worth the effort, onions and leeks need the same conditions.

I dig in a nice sunny spot a trench 18 inches deep and about 2 feet wide you might need a few of these it depends on how many plants you are growing, in the bottom goes my old runner bean plants (haulms) or you could use any veg leaves, lettuce, cabbage etc. but haulms are best because they give nitrogen into the soil and this is what plants need to get a good start, on top of that I put a layer of manure or compost then a good sprinkling of bone meal, a good handful over 8 feet of trench cover this with more manure plus a bit of soil top this with a sprinkling of potash a handful or so along 8 foot of trench, the trench should be about three quarters full, top the lot with the topsoil you dug out leave it raised up to allow for the contents of the trench to settle, this preparation should be done as soon as you have a vacant spot so that it plenty of time for nature to make its lovely beds ready to receive your special seedlings, they can be planted out, during April, you could plant out sooner but you will need to have covers ready if frost is forecast.

If you have done all this you can plant them about one foot apart in rows about 18 inches between rows. When your leeks reach 18 inches tall they need to be collared wrap the stem with a length of roofing felt, some people use drainpipe, this is done to exclude light which extends the white part of the leek, onions need the same treatment except for the collaring, take care when you are weeding don't damage the foliage of your leeks as any damage will make them look tatty on the show bench.

That's all there is to it! Water, weed, and Bob's your uncle all you need now is a good summer then you can join me at the show, you could try them out at the Dore Show the week before so long as you keep the best ones for your own

Totley Show. If in doubt pop into my place for any further advice, I might even have a few seeds to spare.

FLOWERS Tidy up herbaceous borders cut off all dead or dying leaves and stems - dig over any vacant plots. If you have not fed the ground recently then a good dusting of bone meal will work wonders, work it into the top 2" of soil the worms will do the rest. It's a good time to half prune roses this stops the wind from rocking them; you can prime them down properly in the spring when the frost has done its worst. It's also a good time for planting roses, dig a large enough hole to spread the roots in a natural formation, fork a bit of bonemeal or better still rose fertilizer into the bottom of the hole (don't let the roots lay directly on the bonemeal). Fill up the hole making sure there are no air pockets, firm them in well but leave the final 2" or so loose. Check dahlia tubers in store, cut out any rotting parts and dust with flowers of sulphur.

The planting of Hyacinth and Tulips should be completed this month. Check over bulbs planted in pots for winter flowering one or two of the most forward can be brought into the light but keep them cool, 60F max, make sure they have plenty of root formed. Time to plant honeysuckle, clematis, jasmine and ornamental vines, if they are dry when they arrive give them a soak in tepid water, and drain them for an hour or so before planting them, tie them

to the supports straight away Herbaceous and moisture loving plants can be planted now, split up perennials like Michaelmas daisies, golden rod, scabious, replant the best bit usually the outer portion pot up any surplus for the charity plant stalls, don't forget to wrap up the tender plants or bring them indoors before they get nipped by frost.

VEGETABLES Clear any plots of old veg and roughly dig over leaving the clods big so that the frost can get to them, this is one way the frost helps the gardener in breaking down clay soils and killing off any nasties. Stake up Brussels sprouts and broccoli, remove any yellowing leaves. Cover any green crops with netting or fleece to protect from birds and watch out for the dreaded slugs and deal with them pronto. Keep the old hoe busy eliminating weeds before they take over. Lift and store Jerusalem artichokes, also a few roots of parsnip as they will be difficult to dig up if the ground becomes frozen. Lift a few crowns of rhubarb for forcing in the greenhouse. Leave then on top of the ground for a week or so before taking them inside, the crowns can be close to one another and light excluded (a grow bag would do if you don't plant in the ground).

continued page 11

TREES FRUIT and SHRUBS Move container grown evergreens to a sheltered spot out of the wind, any deciduous hedges etc. can be cut back at this time. Fruit trees especially those trained against a wall can be primed, after pruning make sure they are tied back securely. Make sure that all supports for your fruit stock is in good condition, and the wires etc. are not biting into the stems or trunks. Prepare ground for planting all kinds of fruit trees, bushes and canes, dig it as deep as possible and work in some manure especially if you are planting blackcurrants. When pruning trees watch out for canker (a crusty like scab on the branches cut it out with a sharp knife and paint the wound with a tree paint. Look over fruit in store use any suspect ones or discard them.

GREENHOUSE and INDOOR PLANTS If you have not done already give your greenhouse a good fettle, remove all those dying plants and any other debris that's lying around Give the glass a good wash with greenhouse cleaner, make sure none goes on the plants), and fix up the insulation, one of the most important things at this time is getting a nice balance of temperature and ventilation. The temperature on a sunny day can reach 100F which would build up quite a damp atmosphere if adequate ventilation is not provided, most plants don't like it. So keep a wary eye open and try to avoid these conditions. If you are a summer greenhouse gardener when the greenhouse is empty in the winter (shame on you), then a good wash down with Jeyes or similar is all that is required, don't store tools etc. in the greenhouse this reduces their life quite considerably. Cyclamen and winter flowering primulas are ready to come into flower and will benefit from a feed once a fortnight remember calceolarias must be quite dry before they are watered this rule applies to most pot plants except those that are in full flower or those that are growing rapidly in a heated greenhouse, seedlings and cuttings should be kept on a shelf as near to the glass as possible. Plant indoor lilies, gladioli and hyacinth to flower in spring (you see there's no need to have an empty greenhouse). Prune flowering maple, musk, fuchsias, oleander and plumbago. Try to keep the atmosphere around indoor plants especially those near radiators etc. moist by placing them in a tray of damp pebbles (or glass chips which look a bit posher and spray mist them occasionally except the hairy leafed specimens. Do not over water plants at this time, and avoid spilling water about in the greenhouse and cold frames.

LAWNS As usual keep lawns clean and well raked, scarify and give them a feed of Autumn Winter fertilizer, keep off when they are covered in frost. In mild spells you can dig and prepare new lawn sites ready for sowing or turfing in spring.
Cheerio for now, TOM



Serenta HomeCare

Are you in need of a little help and support within your own home? The older we get the more help we need to enable us to live a more independent life.

Personal Care • Medication • Domestic • Sitting Service • Social and Leisure activities

To find out more call Sue 07715 636 395 Pat 07715 634 781 or visit www.serentahomecare.co.uk

For reference from an existing client please call 0114 2366891

Baslow Food Fair

Local favourites Liberty Farm Foods from Totley will be appearing at the next Baslow Food Fair on 6th November.

The Food Fair which is attracting a regular crowd of Totley visitors is showcasing over 20 artisan food producers.

Liberty Farm Foods will be using the event to showcase their range of revolutionary pork pies, which went down a storm when they were launched earlier this year. The range of pork pies include really unique flavours including an exotic mango and chilli combination.

Legend has it that the renowned chat-show host and Barnsley boy Michael Parkinson is one of the greatest fans of Liberty's pork pies. Apparently he always makes sure he stops by and picks up some if he is visiting Yorkshire.

Other stalls will be selling regional cheeses, artisan bread, oils, preserves, cakes and a cornucopia of other local delights.

The Food Fair is being held in Baslow Village Hall and is open between 10.30 - 4.30 on 6th November. Entrance is free and loads of free tastings are promised.

www.hartingtons.net



The Crown Inn

Tony and Julie at

The Crown Inn

Welcome you for

Good Quality, Home Cooked Food

Tuesday – Friday

12-2pm & 5.30-8pm

Saturday & Sunday

12-2pm

Come & join us for

Good Beer, Good Food & Good Music

Tel 0114 236 0789

CLOSED SUNDAY EVENING

Visit our website: www.crowninntotley.co.uk

LIVE MUSIC

1 November

The Stones

5 November

'The Big Bang'

8 November

Cary Bayliss and

Lyndsay Dracass

29 November-Emerald

13 December

Highway Child

ALL SAINTS CHURCH, Totley Hall Lane.

Remembrance Sunday

Services for November

6th November 10am Holy Communion
6.30pm Holy Communion

13th November REMEMBRANCE SUNDAY
9.30am at All Saints
11am at the War Memorial

20th November 10am Morning Service
6.30pm Holy Communion

27th November 10am Holy Communion
6.30pm Evening Prayer.

Sunday AM @ All Saints

What's Sunday AM?

Sunday AM meets most Sunday mornings in the hall and the crypt. It is for children and young people with whom we aim to teach the Bible in a relevant and understandable way across all ages. The sessions provide the opportunity to discuss and apply the message of the Bible to our own situations. Our team's passion is to bring the good news of the Lord Jesus Christ to the children and young people of Totley.

What age?

Sunday AM caters for a wide range. There is a crèche facility in church for 0-2 years old. In the hall we have Sparklers, (age 2- reception). Alive Gang, (Y1-Y3) and Alive Gang Plus (Y4-Y6). Rooted (Y7+) meets in the crypt. (the main heating feed pipe is in the crypt, so it is a warm place, especially with hot chocolate). We have a great team of leaders and helpers to run this on Sundays and their pictures are up on the wall in the hall where more information is available.

Andy Holme.

Autumn Leaves.

Last of the leaves come
floating down
In green or gold or brown
A highway great of colours
bright
They really are a splendid sight.



The trees they hold no secrets now
In crevices small or leafy bough
No treasures held for all to see
In nests of birds or homes of bee
The silhouettes so cold and bare
Stand silver in the frosted air
The air is dumb without a sound
When trees all round in white are gowned

But you if you just use your eyes
You should behold a secret prize
For on the branch and twig you'll see
The bumps for Spring to leaf the tree.

And so the seasons come and go
With Spring or Fall and rain and snow
The leaves they form and disappear
To mark the timing of the year.
Viv Filleul.

A story of Encouragement.

This true story was told recently by Gavin Calver, a Christian who works with young people. He said he had started writing letters to people in the news to encourage them when he feels they have done something praiseworthy. He received standard acknowledgements from Tony Blair and David Cameron. He wrote to Dot Cotton, the 83 year old star of East Enders praising her for not being afraid to profess her Christian faith and in this way being a good role model especially for young people. Sometime later he received a phone call from her inviting him to tea. She then told him that the scriptwriters of the programme had devised a story line in which she was to play a part behaving totally immorally. She didn't feel this was right even in her TV role. So she photocopied Gavin's letter and gave it to all the cast, the producers and the script writers, and told the latter that if this young man thinks I am a good role model how can I possibly let him down? As a result the story line was changed completely! I wonder who we can encourage this month?
Gay Riley.

Scouts

IN response to Frank Young's letter re the Scouts of Totley. I appreciate what he says about his trek cart trips to Hathersage in 1942 1943 and 1944. A beautiful village where I spent most of my school holidays with my Mother's relatives, one of whom lived in a cottage next door to the Methodist Church where she was the Caretaker.

One of my cousins and myself had the dubious pleasure of pumping the organ from behind during the Sunday morning services. I don't blame the Scouts for trekking there. However, I was speaking about Totley village when, so far as the inhabitants there were aware, except for the relatives of the Trekkers, there were no scouts.

Jo Rundle.

Do you need help?

In coping with worry, illness, depression or spiritual problems.

Christians believe that God, through Jesus Christ, comforts, heals and brings peace of mind, in response to prayer.

Members from All Saints and Totley Rise Methodist churches are currently offering to pray in confidence for anyone who would like to come to:

TOTLEY LIBRARY BUILDING ON
SATURDAYS between:

12.30 and 1.45 pm during November and up to
and including 17 December 2011

For information ring Brian on 07722 236037

CROSS SCYTHES

PUB & RESTAURANT

CHRISTMAS DAY 2011 MENU

£70 PER HEAD

TO BEGIN

Crayfish & Lobster Bisque with Homemade Bread

or

Chicken Liver Parfait flavoured with Brandy & Port,
served with Homemade Bread, Cumberland Sauce

or

Salad of Rocket & Melon with a Strawberry & Champagne Dressing

MAIN COURSE

Roast Turkey or Roast Sirloin of Beef or Roast Salmon
With Dripping Roast Potatoes, Creamy Mash, Sautéed Vegetables,
Red Wine & Port Sauce, Pigs in Blankets

or

Brie & Chestnut Pie,
Creamy Mash, Sautéed Winter Greens & Creamy White Wine Sauce

DESSERT

Traditional Christmas Pudding with Brandy Cream Sauce

or

Cheese Board

TO FINISH

Chocolate Truffles, Tea or Coffee, Homemade Mince Pie

NEW MENU NOW AVAILABLE

Telephone: 0114 236 0204

Email: enquiries@cross-scythes.com

Baslow Road, Totley, Sheffield, S17 4AE

Westside Pub of the Year



introducing i.Fit⁰⁰⁰

Shake
UP!

NOW
OPEN!

A 10 minute i.Fit workout is the
equivalent of spending an hour
in the gym.

Drop a dress size - without breaking sweat!

- Burn fat
- Increase circulation and lymphatic drainage
- Tone and tighten skin
- Increase bone density
- Lose weight
- Reduce back and joint pain
- Reduce cellulite
- Increase balance and co-ordination
- Build muscle tone
- Decrease blood pressure
- Increase flexibility
- Increase sense of well being

We also offer the
latest in stand
up tanning!

Opening Times

Mon - Fri	9am - 7pm
Saturday	9am - 5pm
Sunday	Closed

Tone UP! Tan UP! @ Shake UP!



TELEPHONE: 01142 353 440 www.shakeupsheffield.co.uk

77 Baslow Road / Totley Sheffield / S17 4DP (Next to Dore & Totley Vets)

Homeopathy @ Synergy.

162 Baslow Road, Totley, Sheffield, S17 4DR

Advanced Indian Sensation Method Homeopathy

Alternative medical treatment for all chronic conditions

Registered with major insurance companies. Can claim through the Westfield scheme



Registered member of

The Society of Homeopaths

Ring: Lindsay Allison RSHom for more information:

0114 235 7845 or 07968 167036

Kitchen Solutions

By Nigel Watson

Fully fitted quality kitchens at affordable prices, planned and designed to your specification. View a computer generated impression prior to installation.

For a local, friendly, reliable service call for a free brochure and quotation.

TEL: 0114 236 4778

Mobile: 07971 528149

Come with an

Hallamshire Osteopathy

and talk

Osteopath, who will consider you as a person and not just your symptoms.

David Webster (Registered Osteopath)

Treatment for:

- back and joint pain
- neck and shoulder pain
- sports injuries and muscle strains
- work induced and driving related pain
- pregnant ladies and new mums

Synergy
162 Baslow Road
Totley
Sheffield
S17 4DR

0114 2357845 or 07943 589293

www.relieffrompain.co.uk

All treatments £35

DON'T PUT UP WITH... PAIN

Activ

Physiotherapy
specialises in:

- Sports Injuries
- Back & Neck Pain
- Joint Problems
- Muscle & Ligament Strains
- Repetitive Strain Injuries
- Post Op. Rehabilitation

Registered with major insurance companies, BUPA, Aviva, Westfield Health

Early morning and evening appointments are available . . . ring for details

Totley: 0114 235 7845 • Norton Lees: 0114 255 6434

Mobile: 07901 968 549



Gail Kitchen: 07986473415



Does going away from home mean your cat is sad and unhappy?
Does a trip to the cattery scare your cat *not to mention your wallet?*

WORRY NO MORE!

MOGGY MAID is on hand to feed, love and provide everything your cat needs in the relaxing comfort of its own home.

As we cat-lovers know, unfamiliar sights and smells can stress your cat, whereas leaving them in the familiar surroundings of their own home carries less worries, for your cat and for you.

If only for a night, weekend, or a month; holiday, Christmas or any time of the year, MOGGY MAID is here to help **LIGHTEN YOUR LOAD**



We promise no mischief allowed!

In a professional manner and with quality service, you can ensure individual care and attention, whilst you relax away from home.

We haven't forgotten the rest of the family; mice, rabbits, budgies, goldfish, etc will receive care and affection too.



LOCAL FRIENDLY SERVICE

From £5 a day

07986473415

For more Information, contact Gail Kitchen on:

5 Ullswater Place, Dronfield Woodhouse

Looking for designer labels?

Let our unusual Vision Plan help you pay for them and much more!

Offering all the benefits of 35 years' experience of South Yorkshire's largest independent firm of opticians.

- Friendly, qualified staff
- Eye examinations
- High-tech diagnostic retinal camera and MacuScope
- Wide choice of spectacle lenses, contact lenses and stylish frames
- Special offers



ASK FOR A VISION PLAN LEAFLET

GUESS DIESEL GANT
EYEWEAR

POLICE EMPORIO ARMANI

Visit our website and make your choice of designer frames at one of our practices including 63 Baslow Road (tel: 236 4485) and our extensive new premises at 634 Abbeydale Road (tel: 255 6554)

www.mko.co.uk



Shepley Spitfire

56 Mickley Lane, Topley Sheffield - S17 4HE 0114 236 0298

New Menu launch **From Sept 22nd**

2 meals for **£8.95**

Served everyday 11am until 9pm

Succulent Sunday Lunch only £5.99

Quality Cask Ales

Quiz Night every Tuesday from 9:30pm

The Home of Big Fish Friday!!

Beer battered Cod fillets, Chips and Peas Two for **£8.99**

Eat in or Takeaway

FOR THOSE OF YOU WITH A LITTLE APPETITE

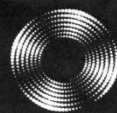
WE HAVE INTRODUCED A SMALL

PLATES MENU FROM **£2.49**

ALL DAY EVERYDAY

CHRISTMAS MENUS NOW AVAILABLE

Entrust Electrical



For all your electrical requirements in or outside the home you can trust **Entrust** to do it right!

- ✓ Full or Partial House Rewiring
- ✓ Additional Sockets, Switches, etc
- ✓ Energy Efficiency Enhancements
- ✓ Contemporary & Classical Refurbishments
- ✓ General Electrical Maintenance & Repair
- ✓ Homebuyer Electrical Safety Surveys
- ✓ Telephone and Computer Data Points
- ✓ Garden, Pond & Other Outdoor Electrics
- ✓ Security Lighting & CCTV



City & Guilds
Qualified

(0114) 2352084
07935 250814

www.entrustelectrical.co.uk

Old Hay Close, Dore, S17 3GP



"need help in your garden?"

...we can help *you*

the
ABBEYDALE
gardeners

Kevin and Mark from the recently closed Abbeydale Garden Centre, have started their own Garden Services Business.

Kevin Hunter 07818 20 12 42
Mark Naylor 07739 75 23 19

"give us a call, no job too small."

Music Tuition



Piano • Keyboard • Flute • Singing
Guitar (rock, metal, blues, jazz, funk, pop, folk)
Music Theory • GCSE work

Music graduates, each with 25 years
teaching and playing experience

All ages, beginners welcome.

Exam work or just for fun!

Call Mark or Karin

0114 237 4853 & 07981 888352

HEARING AIDS

MAURICE NAYLOR FBSHAA RHAD is your
local hearing aid specialist and at your
request will test your hearing in your own
home, free of charge, and if needed you can
try a custom made aid for four weeks
without obligation to purchase.

Tel : 262 0010

In the ear digital from £495

Totley Deli

Your local Rose's Bread stockist

Coffee Shop now open

Monday to Friday 8am to 4pm, Saturday 8am to 1pm

51/53 Baslow Road

Tel: 236 4238



Hatha
..YOGA CLASS..

Totley and Ranmoor

For more information or to book a place call

RACHEL on (0114) 236 9943

BWY Qualified Teacher

BODY, MIND & BREATH

Enjoy the union of yoga



JOHN WADE SINGERS

Mélange
of
Music



Millhouses Methodist Church
Millhouses Lane

Saturday 29th October
at 7.30pm

Conductor
Richard Swift

Accompanist
Jonathan Lazell

Tickets £9
Concession £7
Child £3

Net proceeds to local charities

Ticket sales and information
Jenny Parker 0114 236 0798
Helen Hancock 0114 235 1433

www.johnwadesingers.co.uk

Horizon Electrical

*Faults, Rewires, Sockets, Lights,
Cooker Points, Electrical Showers,
Phone Points, Security Lights*

No job too small

Fully qualified with friendly advice

Ring Totley 236 4364 or
Mobile 07772 483154



BRADWAY INSTALLATIONS

Kitchens, Bathrooms.....and everything in
between

- Complete Kitchens - Installation or supply and installation
- Kitchen Refits - Replacement worktops/sink/hob etc. Worktop / cabinet repairs
- Bathrooms - Cloakrooms - Domestic plumbing - Tiling Laminate / Vinyl flooring

All work undertaken is fully insured and guaranteed

Ring Peter - 0114 236 5995

Mobile - 07766 411355

SLIMMING WORLD

10 WAYS TO MAKE SURE IT WILL BE THE LAST TIME LOSING WEIGHT IS YOUR NEW YEAR RESOLUTION. THIS TIME MAKE IT LAST FOREVER

1. Focus on your weight loss goal and prioritise it.
2. Be sure you really want to lose weight for yourself. Doing it to please someone else may only lead to short term weight loss.
3. Take advantage of all the group support at your local Slimming World class. Even if you are not a 'joining in' person, you'll be surprised how motivating it is.
4. Accept that you will have ups and downs in your weight loss journey, and be forgiving of yourself if you hit a difficult patch.
5. Listen to your 'inner script' and make a conscious effort to talk to yourself in a positive, encouraging way.
6. Keep up your interest in your healthy eating plan by trying new foods, new recipes, and new ways of using your Sins. This will help you avoid getting in to a dieting rut which can be boring and demotivating.
7. Be honest with yourself about what you are expecting from your weight loss and how you are getting on with Food Optimising week by week. People who set unrealistic targets for weight loss or body shape are more likely to give up than those who set achievable targets and share their ups and downs.
8. Go back to your class even after (especially after) you've had a weight gain. You will not be judged, just helped and supported.
9. Keep setting new goals and rewarding yourself for milestones until you reach your target weight, and afterwards!
10. Don't put your life on hold until you've lost weight. You can still enjoy life and lose weight. Think of your dreams and ambitions and bring them to the fore. The positive feelings you get from starting to 'live a little' can only help your motivation and your weight loss.

Group details:

Bradway Annexe now at **St Peter's Church, Greenhill Roundabout, S8 7FN** Thu 5pm & 7pm

Dore Old School, Tues 5.30pm

Tel: **Alison Murphy 07815 046569** for further details

Heatherfield Club, Baslow Road - Mon 7pm

Tel: **Jo Elsey on 0114 2620523** for further details

PhysioFOCUS

at **Totley Rise Dental Practice**
85 Baslow Road,
Sheffield, S17 4DP



Physiotherapy treatment available for:

- Back and neck pain
- Sports injuries
- Sprains and strains
- Joint and muscle pain
- Arthritic pain
- Whiplash
- Repetitive strain injury
- Headaches

Appointments: 0114 2360333

Also available:

- Pilates classes
- Pilates 1-2-1
- Golf Fitness Screening
(as used by consultants to UK, European and Australian PGAs)

For more information please call:

Emer on: 07792 422909

Rachel on: 07956 908454

APPLE LANDSCAPES and APPLE FENCING

www.applelandscapes.com

QUALITY SERVICE AT AFFORDABLE PRICES

Patios • Paths • Walling • Dry Stone Walling • Drainage Work
• Indian York Stone Paving • Railway Sleeper Beds

Garden Tidy Ups etc. No job too small

Fencing & Gates Supplied Only
or Supplied & Fitted

Only Quality Materials Used

FULLY INSURED

Call for free quote

01246 237505 • 07782 167540

French Tuition

Wanting to learn another language at home?

Available from a native and experienced
person living locally.

Beginners to advanced.

Tel Anne on **235 297** or **07796 326752**



Tel/Fax: (0114) 255 4689

Mobile: 07831 802539

TRISTAN SWAIN

LANDSCAPING AND MAINTENANCE

UNIT C4

Sheaf Bank

Business Park

20 Prospect Road

Sheffield S2 3EN



B.K. JEAVONS
PAINTER & DECORATOR



Interior
Exterior
Decorating
No Job too
small

Tel: 01246 416484

and mobile 07882 278306

M. Scriven
(FRUITERAMA)

MARTIN SCRIVEN

HIGH CLASS FRUIT
& VEGETABLES

37, Baslow road

Tel. 236 7116

Orders Delivered





GWS

Technology Solutions



PC Problems/ Repairs/ Servicing No Job Too Small
Wireless & Internet Setup New PC's & Upgrades
PC Setup/Data Transfer Safe PC Disposal Tuition
Software/Hardware For All Your PC Needs

Guy Senior

Phone: 0114 2352662 Mobile: 07890030453

Email: guy@gwstech.co.uk

Web: www.gwstech.co.uk

GWS, 5 Conalan Avenue, Bradway, Sheffield S17 4PG

R.S. HEATING & BUILDING CO

EST. 1971



HEATING DIVISION:

Experienced Installers of condensing, combination and regular boilers. Systems fully guaranteed. Complete after sales service. Also Bathrooms, showers and small plumbing works.

BUILDING DIVISION:

Loft conversions, House renovations including general building, joinery, plastering, electrical decorating etc.



13 Overcroft Rise, Sheffield, S17 4AX

Tel:- 0114 236 4421

Reg. Office:- 62 Machon Bank, Sheffield, S7 1GP

Te:- 0114 2559425

Fax:- 0114 255 9431

Email: enquiries@rsheatingandbuilding.co.uk
Web: <http://www.rsheatingandbuilding.co.uk>



253 Baslow Road, Sheffield, S17 4DU
Tel: 0114 2360 583 Mobile: 07801 346 455

Dronfield Landscapes



Gardens cleared and maintained, Lawns mowed, Turfing, Tree felling & pruning, Hedges trimmed & reduced, Pond maintenance, Fencing etc.

for free quotation call

Chris on: (0114) 2746158 Mobiles: 07976072785 or

Richard on: 07789497104

8am-6pm mon-fri

HazelBarrow Farm, Norton S8 8BA

R.M.M BUILDING SERVICES

25 YEARS EXPERIENCE

All types of building work carried out including- Drop kerbs, block paving (drives, paths, etc), extensions, general building repairs and maintenance.

Phone Rob on- Mob- 07906108567

Home-2352190



Nigel Watson



Carpenter and Joiner

Fitted kitchens, sliding wardrobe doors with bespoke interiors, internal and external doors supplied and fitted, new handrail and spindles, laminate and wood flooring, locks, architraves, skirting board, stud walling, boxing off etc.

For a reliable and quality service

TEL: 0114 236 4778

MOBILE: 07971 528149



Garden Services & More

Lawn mowing, strimming, weeding, turfing, leaf clearing and lawn care. Hedges trimmed, reduced in height or width. Tree felling and pruning. High Pressure cleaning of driveways and patios.

Phone Bruce on Tel: 0114 2356708 or

Mob: 07855752761



Got a computer?

Having Problems?

Is it running slow? Stops responding? Having problems running the latest games or applications? Broadband installation?

Give me a call!

I'm available for home visits at any time including evenings and weekends. I can also suggest upgrades to improve performance, or even build you a system to your specific requirements.

Tim Brown

Building, Installation, Upgrading and Troubleshooting Computer Systems
Over 25 years professional experience

Phone: 0114 2472619 Fax: 0870 7060080

Mobile: 078 17464703 Email: service@timbrown.plus.com

Dronfield Landscapes

Logs and woodchippings
For Sale

Ring for details
Chris on 0114 2746158
Mobile 07976072785

Richard mobile
07789497104



Central Heating
Domestic Plumbing
Glazing, Double Glazing and Glass
House Maintenance
UPVC and Wood Windows & Doors
Mini Digger & Driver, Muck Shifts, Footings Etc.



TOTLEY PRIVATE HIRE

24HR TAXI SERVICE
ADVANCE BOOKINGS TAKEN
LOCAL • LONG DISTANCE • AIRPORT

Tel: 0114 283 9692
Mobile: 07974 355528

Domestic electrical work carried out by
City & Guilds and 'Part P' qualified

LADY ELECTRICIAN

- * House rewires * Replacement fuse boards *
- * New sockets and lights * Telephone points *
- * Security lighting * Pond pumps * Deck lights *

All work guaranteed and
fully insured

No job too small
For a free quote, without obligation



ring Mandy on 07788-544225



Tiling, Plastering, Plumbing & Complete Bathroom Fitting Service

Tel: 0114 274 6775
07738 688807

- ◆ Under Floor Heating
- ◆ All Aspects of Home Improvements & Maintenance Work Undertaken
- ◆ Competitive Prices
- ◆ NVQ Qualified
- ◆ No Job Too Small
- ◆ Fully Insured & Guaranteed

A1tilingandplastering.co.uk
33 Glen View Road, Greenhill, S8 7SF

Hypnotherapy

Weight, confidence, smoking, stress,
phobias, anxiety, panic, sleep, etc...

Call 235 1985 Totley

www.sheffieldhypnosis.co.uk



Paul Peace



The
British
Psychological
Society
Chartered Psychologist



Karen Bartle

Creating opportunities with disabled people.

Registered Charity No. 218186

Leonard Cheshire Disability

Leonard Cheshire Services in Offers choice & opportunity to people with disabilities. A Specialist Unit for the Younger Disabled. Residential & Respite Care - Single Rooms Day resources - Aromatherapy - Reflexology - Physiotherapy - Toning Tables.

Activities include: - Arts & Crafts - Computers - Cookery - Shopping Expeditions - Theatre Outings - Church. Further details can be obtained from - The Service Manager, Mickley Hall, Mickley Lane, Totley, Sheffield S17 4HE. Tel. 0114 236 9952 Fax. 0114 262 0234

The Care at Home Service supports disabled people who wish to remain in their own homes.

We provide flexible care packages from 1 hour to 24 hours meeting individual needs. The service operates throughout Sheffield.

Our service includes: - help with getting up and going to bed, dressing, washing, bathing, shopping, cooking, light household duties.

Further details from: - The Care at Home Manager Tel. 0114235 1400 Fax 0114 235 1499

John Heath & Sons

AN INDEPENDENT FAMILY FUNERAL BUSINESS

Sometime.....

You will probably have the responsibility of making funeral arrangements. No one looks forward to this responsibility, but the death of a family member or friend brings with it an obligation that must be met. There are people who can help you meet this responsibility. We have been helping people combine the different aspects of the funeral into a meaningful service for over 125 years.

Please Call Day Or Night

(0114) 272 2222

Head Office - Earsham Street

Also at Meadowhead, Ecclesall Rd,
Crookes and Stannington

www.johnheath.co.uk



CHARISMA BLINDS



For
Windows
With Style

Sheffield Factory Showroom
106 PROSPECT ROAD
HEELEY, SHEFFIELD

Sheffield (0114) 258 5496
Rotherham (01709) 512113

TOTLEY & DISTRICT DIARY

MONDAYS	COFFEE MORNING , All Saints' Church Hall, 10am-noon TAI-CHI , United Reformed Church, Totley Brook Road, 11.30am-12.30pm RAINBOWS and GUIDES , All Saints' Church Hall, 5.45pm-9pm
TUESDAYS	COFFEE MORNING , Totley Rise Methodist Church Hall, 10am-noon KEEP FIT & COFFEE , For the not-so-young, Bannerdale Centre, Carterknowle Road, 10.15am, Phone 258 5364 WOODSEATS ADVICE CENTRE , Drop in service, free, impartial, and confidential. TR Methodist Church, 10am-noon CRAFT GROUP , Totley Library, 2pm
WEDNESDAYS	COFFEE in the LIBRARY , 10am-11.30am TODDLER GROUP , 10am-11.30am, All Saints' Church Hall. Details tel. Andy Holmes 0114 236 2088 HEALTH WALKS , 10.30am, Totley Library foyer. Phone Sue, The Health Walk Ranger: 0114 283 9195 MODERN SEQUENCE DANCING , All Saints Church Hall, 8pm-10pm
THURSDAYS	CHAIROBICS , Heatherfield Club, 1.15pm NCT COFFEE GROUP FOR DORE TOTLEY & BRADWAY , 10am-noon, For mums & babies/toddlers, meeting in various locations, Phone Lucy Street 07837 000405 or email: lucy@streetr.plus.com for further details PUSHCHAIR CLUB , Totley Rise Methodist Church Hall. 1.30pm-3pm. Tel. 236 3157 for further details PILATES CLASS , United Reformed Church, Totley Brook Road, 6.15pm-7.30pm, Phone Emer Coffey 07792 422909
FRIDAYS	PILATES , The Old School, Dore, 10.45-11.45am & 12-1pm. Phone Teresa Tinklin 07906 312372
SATURDAYS	MODERN SEQUENCE DANCING , All Saints Church Hall 2 nd . And 4 th . Saturdays 8pm-10pm

NOVEMBER

TUE 1st FRIENDS OF GILLFIELD WOOD, 7-9pm, Totley Library
SUN 6th CASTLETON FARMERS MARKET, the Village Hall, 10am-3pm
SAT 12th SATURDAY NIGHT LIVE, Trevor Allen, Heatherfield Club. 8.30pm. Come & play Play Your Cards Right. Non-members welcome
TUES 15th TOTLEY TOWNSWOMEN'S GUILD, 'Christmas in the Dales', Andrew Firth, Totley Rise Methodist Church Hall, 10am
SAT 19th COFFEE MORNING, 10am-12Noon, Transport 17, 172 Baslow Rd
WED 23rd - SAT 26th T.O.A.D.S. AUTUMN PRODUCTION, St John's Church Hall, 'Play On' 7.30pm further details page 11
WED 23rd TOTLEY HISTORY GROUP, Totley Library, 7.30pm, The Turnpike Roads of Totley, talk by Howard Smith, all welcome
THU 24th SHEFFIELD FARMERS MARKET, 9am-4.30pm, Fargate
SAT 26th SATURDAY NIGHT LIVE, Micheal J Oliver, Heatherfield Club. 8.30pm. Come & play Play Your Cards Right. Non-members welcome

DECEMBER

SAT 3rd CHRISTMAS FAIR, Dore Old School, 10am- 12 Noon
SUN 4th CASTLETON FARMERS MARKET, the Village Hall, 10am-3pm
SUN 4th MINIATURE TRAIN RIDES. SANTA SPECIAL, Abbeydale Road South, First train 11am-3.30pm (weather permitting) www.sheffieldsmee.co.uk
TUE 6th FRIENDS OF GILLFIELD WOOD, Sheffield's Woodland History, Prof Mel Jones, 7pm, Totley Library (also recent discoveries by the group about the history of Gillfield Wood). All are welcome. 262 0564 for details.
THU 8th - SUN 11th SHEFFIELD CHRISTMAS MARKET, Fargate
SAT 10th SATURDAY NIGHT LIVE, MEMBERS CHRISTMAS PARTY, Ray David Heatherfield Club. 8.30pm
SUN 11th MINIATURE TRAIN RIDES. SANTA SPECIAL, Abbeydale Road South, First train 11am-3.30pm (weather permitting) www.sheffieldsmee.co.uk
WED 14th TOTLEY HISTORY GROUP CHRISTMAS SHOW, details TBA
TUES 20th TOTLEY TOWNSWOMEN'S GUILD, Christmas Meeting, Totley Rise Methodist Church Hall, 10am

TOTLEY INDEPENDENT FOR DECEMBER/JANUARY

The next issue of the Totley Independent will be available from the usual distribution points on

SATURDAY 3rd December 2011

COPY CLOSE DATE for this issue will be

SATURDAY 19th November 2011

Editor: **Ian Clarke**
 Tel. No: **235 2526** or Email: editor@totleyindependent.co.uk

Advertising & Distribution:
John Perkinson
 Tel. No: **236 1601** or Email:- advertising@totleyindependent.co.uk

Items for publication may be left or sent to:
2, Main Avenue, Totley, Sheffield, S17 4FG or
Totley Library

www.totleyindependent.co.uk

PRINTED by STARPRINT

CLEARVIEW STOVES

Pioneer 400 - weight 125kg



This is by far our biggest selling multi-fuel stove. For a typical room size 13ft x 15ft! Producing from 1 to 5kw of heat output - being highly controllable with an updraft and a unique patented down draft to burn the tar off the glass - keeping it crystal clear - hence the name CLEARVIEW. One log lasting up to 1.5 hours given super efficient outputs up to 80% (an open fire runs at 15% efficient!). Seven choices of colour to compliment your decor with optional leg heights from 2 to 10 inches. Clearview Stoves were the worlds first to be approved for burning in 'Smoke Controlled Areas'. We have over 200 installations around Sheffield. We are often told by many of our customers that "It's the best thing we have ever bought"

Showrooms at Burgin Conservatories 302 Abbeydale Road S7 1FL
 Open Tues-Sat 10-5pm • Sundays 10-4pm
www.clearviewstoves.com • www.burgin-conservatories.co.uk
 or please telephone Graham Burgin 07973 321 075
 for advice or FREE QUOTATION



601 Abbeydale Road, Sheffield 7. Fax: 0114 258 8599

DESIGN & PRINTING of

- LETTERHEADS • BUSINESS CARDS •
- BOOKLETS & PADS •
- INVOICES • LEAFLETS •
- CARBONLESS SETS • BROCHURES •
- RAFFLE TICKETS •
- WEDDING STATIONERY •
- ENVELOPES & POSTCARDS •

**SPECIALISTS IN THERMOGRAPHY
 FOIL BLOCKING AND ENCAPSULATION**

0114 258 0707
For a Quick Quotation