

---

# TOTLEY INDEPENDENT

---

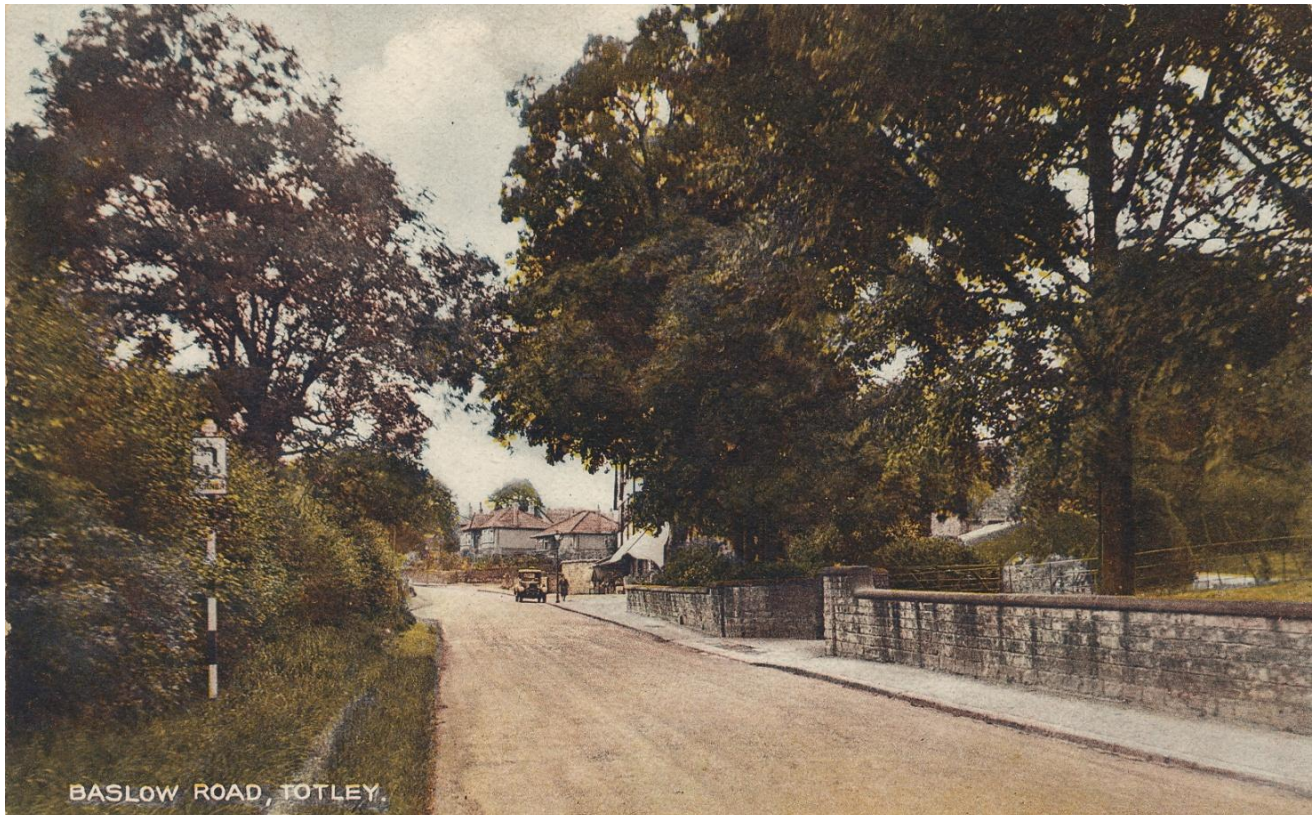
PUBLISHED CONTINUOUSLY SINCE 1977  
February/March 2014

www.totleyindependent.co.uk

No. 366

20p

---



BASLOW ROAD, TOTLEY.

*Baslow Road, looking up towards the Crescent on the right. Probably taken mid-1920s.*

## Save Totley Library: the story so far

The Save Totley Library campaign group would like to say a big thank you to everyone who has supported the campaign to Save Totley Library. The response from the local community has been overwhelming. Matt Kik initially set up the "Save Totley Library" Facebook group in September as a call to action and since then the campaign has achieved -

- **2,850 signatures on the petition to Save Totley Library**
- **413 members of the Save Totley Library Facebook group**
- **410 residents attended public meetings**
- **354 children's surveys presented to the council**
- **205 followers on Twitter**
- **50 volunteers distributed 7,000 leaflets to homes in Totley, Dore and Bradway**

Matt presented the petition to Save Totley Library at the full council meeting on Wednesday 8<sup>th</sup> January - with the petition from Greenhill there were over 5,000 signatures, and so this triggered a full council debate.

Matt made an eloquent speech to the council: "We are petitioning against the proposed closure of Totley library. We know at this stage these are only proposals but we believe it even being considered for closure is a grievous mistake. On top of the fact that it is a well-used, well-loved and highly valued local resource, it is also our only remaining council-funded community building. Without Totley Library, the residents of Totley, Dore and Bradway have no feasible alternative. What was a short walk to Totley Library becomes a long and expensive bus journey to Highfield for most people, sometimes using the number 97, the worst performing bus route in the city, and for others it will be completely impossible."

He went on: "Totley Library is a well-used facility; not just for book borrowing but as a meeting place for friends, groups and societies and is a regular destination for children on school trips. We live on the outskirts of the city and for many people our library is a lifeline. On the other side of the (continued page 3)



*To us, it's personal.*



It's About Being  
A Daughter Again



Call us for a  
Free Care  
Consultation

Home Instead Senior Care can provide affordable Home Help, Companionship, and Personal care, for vulnerable adults so they can remain independent in their own homes. We can provide care from 1 hour a day, and tailor our services to your loved ones needs.

Now  
Recruiting in:  
Sheffield

☐ Committed

☐ Caring

☐ Hard Working

☐ Dependable

If you have ticked all the boxes then you may be an ideal CAREGiver for Home Instead Senior Care. We are looking for people who want to make a difference and deliver quality care to vulnerable adults in the comfort of their own homes.

Call our number below to apply

For more Information about our services

Call: 0114 250 7709 or Visit: [www.homeinstead.co.uk/sheffieldsouth](http://www.homeinstead.co.uk/sheffieldsouth)

## Free Help and Advice available locally

Benefits

Debt

Housing

Employment etc.

**citizens  
advice  
bureau**

Sheffield  
Citizens Advice  
at  
Totley Rise Methodist  
Centre  
Grove Road, Totley  
S17 4DJ

Tuesdays

10 - 12 noon

No  
appointment  
required

## SEE THE DIFFERENCE!

AT



- **COMPREHENSIVE EYE EXAMINATIONS**  
including special tests for glaucoma, colour vision, dyslexia & diabetes
- **CONTACT LENS CONSULTATIONS**  
free contact lens trials and monthly direct debit payment schemes
- **PRESCRIPTION SUNGLASSES**
- **LEISURE SPECTACLES**  
for computer work, fishing, swimming and safety wear
- **ACCESSORIES**  
ready readers, chains and magnifiers

**LENSES BY SEIKO**  
In all non-budget spectacles

**TOTLEY**  
63 Baslow Road  
236 4485

**ABBEYDALE**  
634 Abbeydale Road  
255 6554

For more help and information please phone or call into the practice of your choice  
For a full list of our practices visit

**WWW.MKO.CO.UK**

Terms and conditions apply.

## Save Totley Library – the story so far (from p.1)

coin, the proposals see several lesser-used libraries within walking distance of Sheffield Central Library remaining open as hub or community libraries. We ask the council to reconsider their plans and help find a way that would see every library in Sheffield remain open with funding and support from the council."

The latest public meeting on Thursday 9<sup>th</sup> January at Totley Rise Methodist Church was attended by 110 residents. This provided an opportunity to put questions to Councillor Mazhar Iqbal, Cabinet Member for Community and Inclusion, and council officials responsible for libraries and communities. Passions were clearly running high as the question-and-answer session lasted for two hours. Campaigners are confident that this meeting gave the council a clear idea of the importance of Totley Library to the local community, and hope it encouraged the council to review the proposal to close it.

The campaign group has united with other groups from Greenhill, Upperthorpe, Frecheville, Walkley, Broomhill, Park and Stannington to call on Sheffield City Council to rethink its plans and work with its communities to save libraries. It suggests that the Council could capitalise on volunteers from across the city and reduce the number of fully funded "hub" libraries from 11 to 4 to enable all other libraries to avoid closure and become community libraries funded by the council and staffed by volunteers.



The council consultation closed on Friday 10<sup>th</sup> January and a decision will be made by the council and published in February. The Totley campaign group has submitted a business plan to the council which would keep Totley Library open as a co-delivered community library, paid for by the council and staffed by local volunteers. A member of the campaign committee explained "we believe it is important for the library to remain part of the library network, with access to the library information systems, database of registered users, book stock, inter-library loans and some support from professional library staff. We do not know whether this plan will be endorsed by the council, as Totley is currently at the bottom of their priority list. However we do not believe that a fully independent library is a viable alternative. It would not be sustainable in the long term for the community to finance, manage and staff the library, especially if it is no longer connected to the library network in Sheffield."

Another public meeting will be held in February when the decision is made by the council. Meanwhile, further information can be found at the website - [www.SaveTotleyLibrary.info](http://www.SaveTotleyLibrary.info) - through Facebook and Twitter - "Save Totley Library" - by email to [SaveTotleyLibrary@gmail.com](mailto:SaveTotleyLibrary@gmail.com), or by telephone on 07968 343425.



## **Transport 17**

Firstly, may we wish you all the very best of everything for 2014 and thank you for your support. The Christmas Fayre was a great success and raised approximately £200 which is a record. You turned out and gave your support in many ways so thank you for everything.

The Committee made a constructive decision not to do any fund raising until after the A.G.M. on 24th March as we had to reschedule three times in 2013 because of the snow! Maybe it will wait to come until the end of March but we doubt it very much! We are pleased to report that operations are running fairly smoothly at present and all the passengers and clubs are running as normal (hope I am not tempting fate) as the snow hasn't arrived yet. Only time will tell. As soon as we have more information on future events we will be bombarding the notice boards and clubs to keep you informed but in the meantime wrap up warm and stay well. Hopefully see you soon.

*Felicity Revill, Chair*

## **Are you putting peanuts out for the birds?**

Then save yourself some money!

2kg peanuts at Homebase: £8.90

3kg peanuts at Totley Tails and Whiskers: £5.90

**SHOP LOCALLY!!**

## **Councillor Surgeries**

**Liberal Democrats:**

2nd Monday in the month 6.00-7.00 p.m., Totley Library, Baslow Road and 2nd Saturday in the month from 10.30 a.m. to 12.00 noon, Dore Old School Hall, Savage Lane, Dore Contact details:

Keith Hill 235 2289 Email: [keith.hill@sheffield.gov.uk](mailto:keith.hill@sheffield.gov.uk),

Colin Ross 235 1948 Email: [colin.ross@sheffield.gov.uk](mailto:colin.ross@sheffield.gov.uk)

Joe Otten 230 3290 Email: [joe.otten@sheffield.gov.uk](mailto:joe.otten@sheffield.gov.uk)



yogaq@hotmail.co.uk

0114 236 9943

07708 996984

Body, Mind & Breath  
enjoy the union of yoga

YOGA CLASSES in TOTLEY & RANMOOR

Rachel Quinn BWY Dip



Caterers  
Quality Meat Shop  
& Fresh Farm Produce

Fresh and Frozen Prepared Meals

Fresh Meat and Poultry

Outside Catering

Home Delivery

253 Baslow Road, Sheffield, S17 4DU

Tel: 0114 2360 583

Mobile: 07801 346 455



ECCLESALL FIRST AID TRAINING

Do you require certification for work?

Want to learn lifesaving skills to protect the ones you love?

Our experienced and professional trainers are accredited to  
deliver fully certificated qualifications in;

Adult and Paediatric First Aid

For a free quote and advice call  
Tel - 07742068599

Web - www.ecclesallfirstaidtraining.co.uk  
Email - info@ecclesallfirstaidtraining.co.uk

## PhysioFOCUS

at Totley Rise Dental Practice  
85 Baslow Road,  
Sheffield, S17 4DP



**Physiotherapy** treatment available for:

- Back and neck pain
- Sports injuries
- Sprains and strains
- Joint and muscle pain
- Arthritic pain
- Whiplash
- Repetitive strain injury
- Headaches

**Appointments: 0114 2360333**

Also available:

- Pilates classes
- Pilates 1-2-1
- Golf Fitness Screening  
(as used by consultants to UK,  
European and Australian PGAs)

For more information please call:

Emer on: 07792 422909

Rachel on: 07956 908454

## Horizon Electrical

*Faults, Rewires, Sockets, Lights,  
Cooker Points, Electrical Showers,  
Phone Points, Security Lights*

No job too small

*Fully qualified with friendly advice*

**Ring Totley 236 4364 or  
Mobile 07772 483154**



**Kitchens, Bathrooms.....and everything in  
between**

- **Complete Kitchens** - Installation or supply and  
installation
- **Kitchen Refits** - Replacement worktops/sink/hob etc.  
Worktop / cabinet repairs
- **Bathrooms** - Cloakrooms - Domestic plumbing - Tiling  
Laminate / Vinyl flooring

**All work undertaken is fully insured and guaranteed**

**Ring Peter - 0114 236 5995**

**Mobile - 07766 411355**



**1/2**

**Price membership  
on production of  
this advert**

because you're amazing

If you want to lose weight healthily and with no deprivation or  
humiliation then join your local Slimming World class in Totley,

Mondays at 7pm and at Greenhill on Wednesdays at 10am

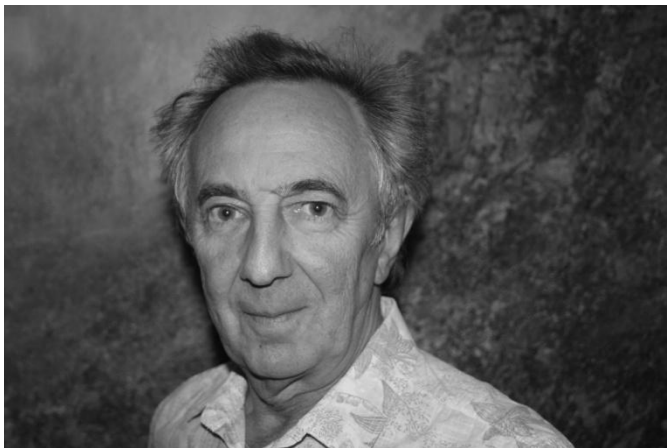
**Telephone Jo Elsey on 0114 2620523**

**or 07590 545 253**

(Offer cannot be used in conjunction with any other offer)



## AN EDITORIAL MOMENT....



Hello Readers!

I thought I'd take a little space to introduce myself as the new editor. Some of you will know me as one of the organisers of the Totley Music Festival - a role which I will, hopefully, continue. I have taken on this

new task with some apprehension - following in Ian's footsteps could never be an easy option! But - with some help and mentoring from Mr Clarke himself - here is Totley Independent number 366.

That's enough about me. This bit is really about YOU, the reader. As we go into a new phase of editorship, what would you like to see more of (or maybe less of?) in your Totley Independent? Are there any topics about life in Totley, Sheffield, the universe or anywhere else which you'd like us to cover? You might want to contribute some stories yourself - in this issue you're invited to try your hand at poetry, but it would be great to get other contributions too.

Full details about contacting us can be found, as usual, on the back page. As you read your way towards it, I hope you enjoy this issue, and look forward to hearing from you about your ideas for future editions of the Indy.

Phil Harris

## Latest News from Totley Residents Association

We would like to welcome Phil Harris as the new editor of the Totley Independent. Phil has for some time been associated with the TI and we are sure he will take it forward successfully.

The Christmas Luncheon on Monday 9<sup>th</sup> December was a real joy, lovely food and great service from Lisa, Mike and the staff at the Shepley Spitfire. We were entertained with songs from Len Capper, ably assisted by his wife Anne, and one of the guests gave us a couple of monologues. We were very well supported by local businesses and organisations which enabled us to give everyone a Raffle Prize. There were some very kind comments from the guests and our thanks to Transport 17 for safely transporting everyone.

On Sunday 15<sup>th</sup> December we had the Christmas Market. Bella Shimmy danced again and Easy Dance



*The Christmas Market*

performed for the first time. This was very popular with many joining in to learn new moves. There were several new stalls and the weather was kind to us. Thanks to the Independent which generously covered the cost of a portable generator for use at the Markets.

We are contemplating a new venue for the next Market at the end of March. Information regarding this will be advertised once a decision has been made. **Please note the date of the AGM - Monday 28th April - venue to be confirmed.**

Finally, many thanks to Dave Spivey, Vice Chairman, who has given so much of his valuable time to the TRA. Dave has decided to retire from the Committee due to other commitments. We shall miss him. *Hetty Moran. Chair, TRA*



*TRA Christmas Luncheon*

## LOCAL PEOPLE STAND UP FOR WILDLIFE

Local people are standing up to fight for the protection of wildlife in Sheffield and Rotherham after recent research showed that 60% of wildlife species are declining - with 1 in 10 at risk of extinction.

Ian Deans, who volunteers for the Wildlife Trust for Sheffield and Rotherham, has decided not to sit back and watch this decline but to take action and change things for the better.

Ian gives his free time to work for the Wildlife Trust and explains why: "Because of the economic downturn there are so few resources for wildlife conservation, but it's so important to protect our wildlife. Everyone values it, even if they don't realise it at the time - listening to birds in the garden, breathing in the smell of wild flowers, or seeing the sun through the trees. I think we should all stand up for wildlife while we still can".

Ian has been heavily involved in the Wildlife Trust's campaign to stop the destruction of ancient woodland. He urges people who value wildlife to get involved: "even if you don't have time to give as a volunteer, you can still contribute by donating to the Wildlife Trust's campaigning fund or joining as a member".

The Trust recently launched a public appeal for donations to contribute to a new campaigning fund that will support vital work scrutinising planning applications and proposed developments and fighting to prevent further damage to our valuable natural heritage. To find out more, see [www.wildsheffield.com/campaigns](http://www.wildsheffield.com/campaigns).

The Trust needs volunteers and supporters to help support its work to protecting the natural environment and ensuring nature has space to breathe and grow. Liz Ballard, CEO of the Wildlife Trust for Sheffield and Rotherham, said, "the work that Ian and others do for the Trust is very valuable and without them we wouldn't be able to do the work we do. We have a great record for protecting and enhancing the nature reserves we own and manage, for raising awareness about the plight of local wildlife and the threats to our wonderful countryside and urban green spaces."

Interested in becoming a member, volunteering, or supporting the Trust's campaign fund? Get in touch on 0114 2634335 or visit the Trust's website [www.wildsheffield.com](http://www.wildsheffield.com) to find out more about how you can make a difference to your local wildlife.

## CALLING ALL 'SILVER SURFERS'- renew your bus pass online!

TRANSPORT bosses are urging South Yorkshire's senior travel pass holders to beat the chill this winter by renewing their pass online. Travel South Yorkshire's online pass replacement service makes renewing or replacing a senior travel pass quick and simple, without the need to visit a Travel South Yorkshire Information Centre.

Senior passes can be renewed in five simple steps at [www.travelsouthyorkshire.com](http://www.travelsouthyorkshire.com) within one month of their expiry date, and will be posted to home addresses within ten days.

SYPT Deputy Interim Director General, David Young, said: "Travel South Yorkshire is committed to improving access to our services for all passengers. Our simple online pass replacement service gives customers the option of renewing their senior pass at a time and day that suits them, helping those that are less mobile or want to avoid any unnecessary journeys as the weather turns colder.

We are urging those that know their way around the web to help parents, grandparents or older relatives and friends that don't use the internet as often by showing them how to renew their pass online."

Senior pass holders from South Yorkshire are entitled to free off peak local bus, tram and train travel within the county from 0900 on weekdays, all day at weekends and on Bank Holidays. Pass holders can also travel to and from West Yorkshire on Northern Rail services.

To qualify for a pass, customers must be resident in South Yorkshire and of eligible age. All new senior passes are valid for 5 years from the date of issue.

Senior passes are issued as credit-card style smartcards, allowing users to scan their pass as they board. The technology, which was first launched for senior passes on Stagecoach buses in March 2012, speeds up boarding times, removes the need for paper tickets, and places 'silver surfers' at the forefront of adopting this new technology.

English National Concessionary Travel Scheme senior pass holders can renew their passes by visiting a Travel Information Centre or calling Traveline: 01709 515151.

See [travelsouthyorkshire.com/seniorpass](http://travelsouthyorkshire.com/seniorpass)

## Did you know.....

.....that there's an astonishing amount of information on the **Totley Independent** website? you can access the full content of back issues, right back to Number 12 in 1977. Have a look - go to:

**[www.totleyindependent.co.uk](http://www.totleyindependent.co.uk)**

## Totley Gardening and Planting 25 Years established business

- ❖ Garden maintenance
- ❖ Planting
- ❖ Pruning
- ❖ Hedge trimming

**Please call for more advice -  
Pam Cross 0114 2367884/ 07796513520**

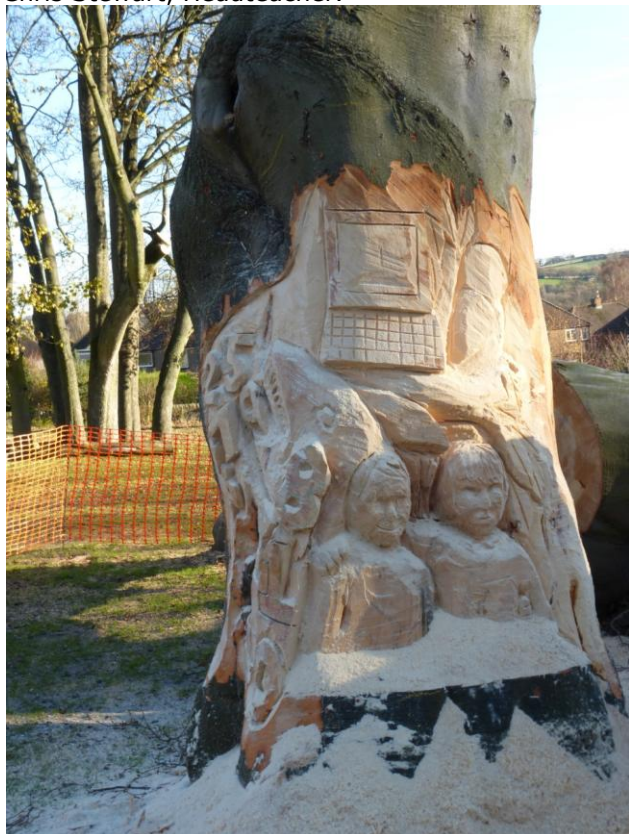
## News from Totley Primary School - January 2014

Happy New Year from everyone at Totley Primary School. The Autumn Term ended in dramatic style with a string of wonderful Christmas performances and a trip to the Lyceum to see Jack and The Beanstalk. The children were absolutely brilliant in their varying roles and a big 'thank you' must go to the staff who helped ensure the performances were so successful. There were many Christmas parties, a visit from Father Christmas and we finished term with a lovely Christingle.

With 2014 upon us we turn our full attention to converting to academy status and to linking more closely with King Egbert School through the Mercia Learning Trust. We convert to an academy in February so it plans to be an exciting month. I must say a huge thank you to Pauline Bridgwater, our Clerical Assistant, and Charlotte Chance from King Egbert who have both worked tirelessly to ensure all the many documents have been completed on time. I've no idea what we would have done without them both!

We were upset last term at having to remove two beech trees from our school grounds. The trees were over 100 years old but unfortunately had developed a root infection which meant they were very dangerous and, on the advice of the tree surgeon, we had them removed. We then enlisted the help of Lorraine Bottrill, a tree sculpture specialist. Lorraine worked with the children to come up with a design for the trunks then spent a couple of weeks with her chainsaws carving the design into the trunks! We are delighted with her efforts and we are now in the process of replacing the trees with some new ones!

Chris Stewart, Headteacher.





### Home Maintenance Services

Local, reliable handyman

Call now for a free, no obligation quote

#### Range of Services

Painting and Decorating (interior & exterior)  
Tiling, re-grouting, resealing bathrooms  
Plastering and repairs to internal walls  
Small plumbing jobs  
Garden maintenance  
Trees pruned, hedges trimmed  
Small roof repairs and gutters cleaned  
Patio/Paving re-laying and cleaning  
Exterior wall repairs, pointing etc.

**Tel: 07866004981**

Home or Garden ❖ No job too small!

## Dore Gilbert & Sullivan Society

I know we will be well into the New Year when you read this but we all hope that you had a Merry Christmas and a very Happy New Year!

Our Christmas Concert was very successful and played to a full house (which is always gratifying). I've never seen an audience of ours laugh so much as they did at "Cinderella", once the message got through everyone thought that it was "Orl right!" It is the only concert we have ever performed where we did not sing one Gilbert & Sullivan piece. It pleased one member of our audience who is no fan of G&S but always enjoys our concerts – it takes all sorts.

We did sing some songs from our next production which is another comic operetta "The Merry Widow" by Franz Lehar. The music will be very familiar to those of you who like and listen to light music, especially lovers of 'Friday Night is Music Night' on Radio2. Premiered in 1905 it has, like all comic operettas, a very tongue-in-cheek story line this time concerning – would you believe – a rich widow and her countrymen's attempts to keep her money in the near-bankrupt Grand Duchy of Pontevedro by marrying her off to a local nobleman. Lots of flirting seems to go on in Pontevedran society, at the Embassy in Paris and in Hanna's house where there is the usual mix up, this time over a fan (with a message attached). I'm going no further other than to say watch out for the dancing girls! The principals are up to their usual high standard and the chorus is better than it's ever been due in no small part to the work of our musical Director, Nigel.

Why not join us for this lively, funny and enjoyable show? We will be at the Montgomery Theatre, Surrey Street, Sheffield. S1 2LG from Wednesday 9<sup>th</sup> April to Saturday 12<sup>th</sup> April. Performances will start at 7:15pm on Wednesday, Thursday and Friday with a matinee at 2:00pm on Saturday and the evening performance starting at 6:30pm.

I guarantee that it's better than sitting in watching the telly and you'll be certain to leave the theatre singing some of the music. Tickets are available now (£12 each) from Judith Bettridge, 238 Carterknowle Road, Sheffield, S7 2EB (please enclose SAE) telephone 0114 2507155 or from any society member.

Derek Habberjam



## What is happening at the Dyson site on Baslow Road?

As many of you will know, Dyson and their planning consultants St Modwen held a 'consultation' event last year about their plans to sell their sites in Totley and Stannington for housing and to seek a sale of the land with outline planning permission. At this consultation, although people did not want the site to become derelict, many were concerned about housing here, feeling that its situation at the gateway to the Peak National Park and its position next to SSSI moorland on Totley Moss, requires sensitive and creative treatment rather than generic housing. There are also real fears, as the planning laws relax to allow building on green field sites, that housing here could lead to infill development between this site and Totley itself.



SPACE wants to see a more creative approach to the site, recognising its value as a gateway to the Peak National Park and making the most of its position for rural, countryside and visitor uses rather than housing. We want something environmentally and architecturally appropriate done with the site which will encourage people to appreciate the countryside. We sent comments to this effect not only to Dyson and their representatives but to many more potential stakeholders on the city.

Myself, as a representative of SPACE (Sheffield and Peak Against City Encroachment) and Andrew Wood, Planning Officer for CPRE (Council for the Protection of Rural England, South Yorkshire and Friends of the Peak District Branch) later met with Dyson and St Modwen to discuss our concerns. Out of this meeting, Andrew sent the following points to Dyson and St Modwen, endorsed by us and by the Loxley Valley Preservation Group who are concerned about land for the Stannington site, which like ours, is on the city's rural fringe:

### **R S HEATING & BUILDING CO.**



**Heating Division** - Experienced Installers of condensing, combination and regular boilers. Authorised installers of Vaillant, Worcester Bosch and Glowworm systems, fully guaranteed. Complete aftersales service. Also bathrooms, showers and small plumbing works.



**Building Division** - Loft conversions, house renovations, including general building, joinery, plastering, electrical, decorating etc.



### **R S HEATING & BUILDING CO.**

88 Sunnyvale Road, Sheffield S17 4FB  
Tel: 0114 236 4421

62 Machon Bank, Sheffield S7 1GP  
Tel: 0114 255 9425 / Fax: 0114 255 9431

www.rshtgld.co.uk E-mail: enquiries@rshtgld.co.uk

"We understand that Dyson wishes to sell the sites with planning permission, partly to maximise their assets and also to have some certainty of what will become of the sites once they vacate. No parties will wish the sites to become derelict although, as I said in the meeting, CPRE would not support any inappropriate development simply as an alternative to dereliction. An abandoned site in a prominent rural landscape presents a range of positive opportunities, and if an interim period of dereliction is the price to pay for a better outcome in the longer term, then this may be more desirable than a quick-fix development solution.

After careful consideration, our core position on the Totley and Stannington sites is as follows:

1. We are wholly unconvinced that market housing would be an appropriate future use of either site, and the appraisals and artist's impressions presented by St Modwen do nothing to change our view in this regard.
2. We would strongly oppose any planning permission made only in outline, since it provides no guarantee that what is developed would bear any relationship to what was consulted on prior to disposal of the site.
3. Whilst we accept that redevelopment of the Totley site may generate stronger feelings amongst a wide range of stakeholders, we do not see housing as any more appropriate for Stannington than for Totley. Both sites are measurably outside the existing built-up area, so housing developments would substantially urbanise this sensitive fringe countryside and would also be unsustainable in terms of accessibility of the new homes to local amenities.



4. Both sites are very visually prominent in their landscapes, and any future built form - even if appropriate in terms of function - would need to be characterised by strong, bespoke architecture with an emphasis on sustainable design and construction. A market housing scheme is very unlikely to fulfil this need, as evidenced by the 'quasi-traditional' styles shown in the artist's impressions, and reinforced by the strong likelihood that a site with outline permission for housing in either location would be sold to a volume housebuilder.

On a positive note we think there is scope for a good outcome on both sites, and we would be very keen to collaborate in seeking more creative options. We would suggest that a starting point would be to identify the stakeholders who have a functional, rather than commercial, interest in what becomes of the sites, and then seek a financially viable mechanism to deliver that that works both for Dyson and for the stakeholders. For example, this might include specifically rural uses, in-

cluding food, recreation and nature, as well as built elements for which design competitions and showcasing of innovations could be considered.

We look forward to further dialogue about securing a sustainable and appropriate future for these distinctive sites."

CPRE are warning us that we may have to hold ourselves ready for a strong reaction to inappropriate plans here. We hope that whatever happens here will not urbanise our wonderful rural fringe.

Please contact SPACE if you wish to be kept informed of developments or if you would like to support us if further action is needed.

Sally Goldsmith  
sheffieldspace@gmail.com

## Saving the Pennies

When we married in 1950 many food items were still rationed as they had been during the war. Food shopping was almost a daily routine for most families and this lasted until domestic refrigerators at affordable prices became available. The spread of supermarkets with bulk packaging of many foods made daily shopping less of a necessity and many of us at sometime or other have been tempted to follow Mrs Thatcher's advice to stock up when prices are cheaper. My story today is concerned with three examples.

We first met our late friend Sandy and his second wife Jenny on a walking holiday in Austria in the late seventies. As we said our goodbyes at the end of the holiday Sandy suggested we keep in touch, which we did. They lived in Crieff and we called on them many times when we went to Scotland. In true Scots tradition Sandy was always ready for a bargain. Shortly before one of our visits their local supermarket had carried a promotion of tins containing a

whole cooked chicken at a much reduced price. Sandy outdid Mrs Thatcher - he didn't buy two or three, he bought a whole case of them which he stored in the loft. Naturally we were given one to take home. Chicken is not my favourite dish but it was very tasty!

My second episode also includes a supermarket, our youngest daughter being the winner this time. Providing for husband and three children she watched the pennies when shopping and normally bought a pack of four or six of some items. On this occasion she went to pick a pack of something she routinely bought and was amazed to find it on offer at "3 for £2". She purchased three lots of "3 for £2". At the checkout the cashier said the offer was not "3 for £2" but "2 for £3". Consequently she was charged nearly £11 instead of the expected £6. After checking she had not read the pricing wrongly she complained to customer services. They checked the shelf, admitted the wrong labelling and repaid the charge

over the expected £6. She was happy with this, but then delighted to be given a £2 voucher - "standard practice when a customer is over-charged"!

However my third story eclipses both of these, and involves her husband. Like us, he has never been one to show his affection by presenting flowers. Things were to change before her recent birthday. Returning from a shop in Waitrose he presented her with a bunch of small red roses. Her look of astonishment prompted him to say "don't worry, they were reduced". True enough, the roses originally on sale for £3 had been reduced to 22 pence. Were this the end of the story, it would just be odd but not special. However, the till receipt contained two interesting entries - 'short stem roses 0.22' followed by the next item '10% off Flowers: -0.30'. So he got 8 pence to take away the free roses!

**Don Ashford**

## Puzzle Corner - Buying a Meal

Four friends out together saw a pub sign advertising "Three course meal for £6.50". Use the following information to decide whether each friend could pay for their own meal (work it out in pounds only).  
Ann's money multiplied by Brian's comes to £45.

Charlie has twice as much as Brian. Ann and Charlie's money together come to £23. Dora's money is the difference between Charlie's and the square of Ann's.  
Solution: page 18

One man went to mow...  
...but his mower wouldn't go!

Now is the time to call

# Mower Mender

and be ready for the forthcoming growing season  
A friendly local business  
servicing all makes of  
garden machinery

phone: 0114 236 6958

mobile: 0781 2211149



Blade Sharpening and  
Collections and Delivery Service Available



THE COMPLETE BUILDING SERVICE

New Build & Extension Specialists

**From Design to Completion**

**Full Project Management  
House Building  
Extensions**

Find  
us in  
Yell.com

**New Roofs/Tile/Stone  
Stonework Specialists  
Loft Conversations**

Established for 25 years with over 90%  
of our work coming from recommendations, to  
find out why call:

**0114 2353314**

**Mobile 07973 908187**

[www.mwoolhousebuilders.com](http://www.mwoolhousebuilders.com)



Christchurch Cottage,  
Townhead Road,  
Dore, Sheffield  
S17 3GA



~ \* ~ \* ~ and ~ \* ~ \* ~

## Electrical and Hardware Supplies

now trading from larger, ground floor premises!!!

Paul and Mandy would like to thank all those customers  
who have braved the stairs to reach us over the past year,  
and are delighted to inform you that we now have  
a new entrance, down the side of the building; plus:

- \* Totally stair-free \* wheelchair access \* car park
- \* All the hardware and electricals you need ... and more!
- \* An ever expanding range of DIY, gardening and homewares

We look forward to welcoming customers, old and new,  
Downstairs at The Heatherfield Club, 191-193 Baslow Road, Totley.

Opening hours: 9am to 5pm Tuesday to Friday,  
9am to 1pm Saturday. Or telephone Paul on 235-1444.



For  
Windows  
With Style

Sheffield Factory Showroom

106 PROSPECT ROAD  
HEELEY, SHEFFIELD

Sheffield (0114) 258 5496  
Rotherham (01709) 512113

Creating opportunities with disabled people.

Registered Charity No. 218186

**Leonard  
Cheshire  
Disability**

Leonard Cheshire Services in Offers choice &  
opportunity to people with disabilities.

A Specialist Unit for the Younger Disabled.  
Residential & Respite Care - Single Rooms

Day resources - Aromatherapy -  
Reflexology - Physiotherapy - Toning  
Tables.

Activities include: - Arts & Crafts -  
Computers - Cookery - Shopping  
Expeditions - Theatre Outings - Church.  
Further details can be obtained from -  
The Service Manager, Mickley Hall,  
Mickley Lane, Totley, Sheffield S17 4HE.

Tel. 0114 236 9952  
Fax. 0114 262 0234

The Care at Home Service supports  
disabled people who wish to remain in their  
own homes.

We provide flexible care packages from  
1 hour to 24 hours meeting individual needs.  
The service operates throughout  
Sheffield.

Our service includes: - help with getting  
up and going to bed, dressing, washing,  
bathing, shopping, cooking, light household  
duties.

Further details from: -  
The Care at Home Manager  
Tel. 0114235 1400  
Fax 0114 235 1499

## Dore Moor Garden Centre

(Opposite the Dore Moor Inn)

Hathersage Road · Dore · Sheffield · S17 3DQ

- Wide range of seeds, bulbs, plants & pots
- Compost & Chemicals
- Mowers, fencing & garden tools
- Bird, Horse and Poultry feeds
- Haddon Stone statuary and David Austin Roses

*Call in and see us*

Tel: 0114 235 0092

Open 9.30 to 5.00  
Sundays 10.30 to 4.30  
Mondays Closed

# The Totley Independent Poetry Workshop

**Sally Goldsmith**

**Now here's something different! In each Totley Independent, I will be offering up a poem by a different contemporary poet as a stimulus for writing one yourselves. And if you send your poems in response, I'll choose one to be published in the next edition. No prizes but the glory. Go on!**

## **What is a poem anyway?**

Contrary to much public opinion, it doesn't have to rhyme (even Shakespeare, Milton didn't always). To be obvious, it looks different - the words are in lines that don't go to the end of the page and there's lots of white space. Primarily, it's always language working very very hard. Each word counts and has to earn its place. Every word the right word too - be precise. Especially beware adjectives and adverbs, no matter what your teacher told you. Condensing, cutting out the overkill, the padding, can be one of the most effective things you do. It can be playful - I love words that you can almost taste. Sound is very important too - reading a poem out loud can tell you if it works or not. It's best not to be consciously 'poetic' which can often sound really old fashioned ("O'er the wood the dancing cloudlets prance...") Use the language of today.

## **This month's workshop**

So this first task is to think of a room. It can be from your past, perhaps a room in a relative's house or a room now. Take us into it. What's in the room? Be specific. Any sounds? Any other senses that are aroused - touch, taste, smell? Any associations? Can you be more accurate about a thing by comparing it to something else?

Here is a poem to perhaps set you going but don't be restricted by it - do your own thing. It is by my good friend and former Derbyshire Poet Laureate Ann Atkinson. A marvellous poet.

### **INVENTORY: 15 THE GREEN**

**Ann Atkinson**

*(now William Hill's betting shop)*

A worn way through from front to back,  
the door that's open to the scullery and stairs,  
a leather chair beside the empty grate,  
the other of its pair, a window to the lane,  
a view across to chapel, school and manse  
and in the middle of the room, the table  
with a drawer each end, one of them real -  
the table that Aunt Peg will claim and sell,

the harmonium, it's fretwork in the wood  
with bellow-pedals that my feet don't reach  
and all the yellowed keys that rattle  
and the china stops, flute, oboe, clarinet,  
I pulled to change the sound I couldn't hear -  
the lost harmonium that bellows on dead air.

See how the poem is a list? But what a feeling of melancholy evoked by the choice of things without the poet ever deliberately taking about sadness. Read it aloud to feel the rhythm. Study how she has constructed it, the senses and memories used. Hear the sounds in the 'rattle' and 'bellow' - and the silence too. How spare it is, the words ordinary yet exactly right and specific.

**I look forward to seeing yours! Please send to me, Sally Goldsmith, at [goldssally@googlemail.com](mailto:goldssally@googlemail.com)**

*Sally Goldsmith is a prize winning poet, script and songwriter. You can order her collection of poetry, 'Are We There Yet?' through <http://www.poetrybusiness.co.uk>*



## B.K. JEAUVONS PAINTER & DECORATOR



Interior  
Exterior  
Decorating  
No Job too small

Tel: 01246 416484  
and mobile 07882 278306



Domestic electrical work by  
award winning  
*Lady Electrician*

- \* House rewires \* Replacement fuse boards \*
- \* New sockets and lights \* Security systems \*
- \* CCTV \* Telephone and computer points \*
- \* Garden power and lighting \*



All work guaranteed and fully insured. For a free quotation, without obligation,



ring Mandy on 07788-544225



Gail Kitchen: 07986473415



Does going away from home mean your cat is sad and unhappy?  
Does a trip to the cattery scare your cat *not to mention your wallet?*

WORRY NO MORE!



MOGGY MAID is on hand to feed, love and provide everything your cat needs in the relaxing comfort of its own home.

As we cat-lovers know, unfamiliar sights and smells can stress your cat, whereas leaving them in the familiar surroundings of their own home carries less worries, for your cat and for you.

If only for a night, weekend, or a month; holiday, Christmas or any time of the year, MOGGY MAID is here to help **LIGHTEN YOUR LOAD**



We promise no mischief allowed!



In a professional manner and with quality service, you can ensure individual care and attention, whilst you relax away from home.

We haven't forgotten the rest of the family; mice, rabbits, budgies, goldfish, etc will receive care and affection too.



**LOCAL FRIENDLY SERVICE**  
From £5 a day

For more Information, contact Gail Kitchen on:  
07986473415 5 Ullswater Place, Dronfield Woodhouse

## A1 Tiling, Plastering, Plumbing & Complete Bathroom Fitting Service

Tel: 0114 4182346  
07738 688807

- ◆ Under Floor Heating
- ◆ All Aspects of Home Improvements & Maintenance Work Undertaken
- ◆ Competitive Prices
- ◆ NVQ Qualified
- ◆ No Job Too Small
- ◆ Fully Insured & Guaranteed

**A1tilingandplastering.co.uk**  
25 Five trees Ave, Dore, S17 3LW



- Central Heating,
- Domestic Plumbing,
- Glazing, Double Glazing and Glass,
- House Maintenance,
- UPVC and Wood Windows & Doors



**Mini Digger & Driver, Muck Shifts, Footings Etc.**

## TOTLEY PRIVATE HIRE EXECUTIVE CAR TRAVEL



**AIRPORTS AND LONG DISTANCE**

**PROP - PAUL SOUTH**  
**24HR SERVICE**

Tel: 0114 2839692  
Mobile: 07974 355528  
Email: PAUL.SOUTH1@TESCO.NET

## John Heath & Sons

AN INDEPENDENT FAMILY FUNERAL BUSINESS

*Sometime.....*

You will probably have the responsibility of making funeral arrangements. No one looks forward to this responsibility, but the death of a family member or friend brings with it an obligation that must be met. There are people who can help you meet this responsibility. We have been helping people combine the different aspects of the funeral into a meaningful service for over 125 years.

Please Call Day Or Night

**(0114) 272 2222**

**Head Office - Earsham Street**

Also at Meadowhead, Ecclesall Rd,  
Crookes and Stannington

[www.johnheath.co.uk](http://www.johnheath.co.uk)



## News from.....



### It's all happening at TASS!

It's been a very busy term at Totley All Saints – but that's just how we like it!! From visits and productions, visitors and special curriculum days - *it's all happening at TASS!*

### Y5 Enterprise Project With YMCA White Rose

Since September, the Year 5 class have been working with Jonathan Buckley from YMCA White Rose on an amazing Enterprise Project. YMCA White Rose is a not-for-profit charitable organisation which provides children, young people and families in South and West Yorkshire with a range of dedicated services. The Y5s have been looking at what the Bible teaches about poverty and justice followed by how individual Christians and Christian charities have stood up for justice, such as William Wilberforce and George Williams of the YMCA. They have also looked at the work of many charities and how they help others. From this research they then had to present to each other in a 'Dragons' Den' pitch situation in order to see which charity they should work to support. The children eventually decided on Green Pastures which is a social enterprise charity which works with disadvantaged and homeless people. The children even set up their own charity to support this work called: TASS Children's Charity Miracle Makers and have produced their very own logo. During our Christmas Fair, the children sold unwanted toys, books and games collecting a fantastic £160.00 and donations have also been collected as part of the Christingle Service and Christmas Productions. In January and February, they will be holding an unwanted toy and clothing amnesty as well as a vast array of other fundraising events!

### Visitors and Extra-Curricular Activities:

We like to provide our children with a wide variety of experience and as a result have various visitors and extra aspects to really get them engaged. Visitors this last term included: Mike Warren a Christian storyteller, Saints Alive Puppet assemblies plus Catch Coaching coaches delivering a day's PE each week. Our after school and lunchtime clubs included: Mad Science, Chess, Art, Records, Multi-skills Sports, Boys and Girls Football, Choir, Athletics, Orienteering and Cross Country.

### Christmas at TASS

It was all going leading up to Christmas! Events started on November 28<sup>th</sup> with our Christmas Fair led by our

amazing PTA – the Fun-d Raisers! We enjoyed our Christingle Service at All Saints Church and then put on our amazing productions: The Nativity with the infants and an afternoon of Carols and Music with the Juniors. We had parties and presents, plus a visit from a man in red suit! Finally, we enjoyed a Carol session on the yard at 3:00pm on the very last day and parents had mulled wine and mince pies. It was a great end to the year!

So what now? Well, we're getting ready for our TASS Aspire day where we will be having visiting University students as well as professionals in the community to come in and talk about what they do and how they got there. This is all to inspire our children for the future and make them think about how they will get to their chosen line of work. We're also re-launching our healthy lunch box and snack policy as well as awaiting funding for a TASS Healthy Snack Shack! Yep! It's all happening at TASS!

If you want to find out even more of the exciting things that are happening at our school, then please visit our new website or email us at [enquiries@totleyallsaints.sheffield.sch.uk](mailto:enquiries@totleyallsaints.sheffield.sch.uk). We'll be so happy to let you know!

Karole Sargent (Headteacher)

## That photograph!

Dear Editor,

With regard to Ian's farewell article and his reference to the cover item in April 1992: I was recently looking at Sheffield City Archives records catalogue online and came across a curious item in the Fairbanks collection. The online catalogue is far from complete as many old card records have yet to be transferred, but it is a good starting point for researchers. In 1824 William and Josiah Fairbank, Sheffield's leading land surveyors, were invited to survey a route for a proposed canal from Chesterfield to Froggatt on the Derbyshire River Derwent. I have not yet looked at the item - FC/MB/29. I presume the idea was to follow the Barlow Brook with many locks or then either climb over Big Moor with many locks or more likely tunnel under it. It could then allow the transport of lead and millstone to the east coast ports. The Standedge Tunnel near Huddersfield had opened in 1811 and may have been the inspiration. At 3.25 miles long it is the country's longest canal tunnel. A tunnel under Big Moor would have been at least as long. Needless to say nothing came of the proposal. If anyone gets the chance to examine the archive documents do let us know what they have to say!

Regards,

Duncan Froggatt

## GARDENING TIPS FOR FEBRUARY-MARCH 2014

End of December and the garden is looking a bit sad. I have just been walking around. The leaves make a mess everywhere and really need clearing up, but the weather is not conducive to venturing out, particularly as I have a cold coming on. I like the leaves cleared away because otherwise they give the slugs a place to shelter from the frost, and we can't have that can we? There is still a bit of colour around - the winter flowering jasmine and pansies give us a bit of a show, and also the kefir lilies - a lovely pink variety braves even the frosty weather. They make a lovely cut flower although it's a shame to take them in as they last much longer outdoors.

I've taken out my old raspberry canes, as I said in the last issue. I dug over the plot and sterilized the soil so that I can plant the new canes in the same place (sterilizing prevents previous diseases from spoiling the new plants).

I will soon be putting seeds into the greenhouse - cabbage, onions, broccoli and leeks. I might try a few carrots though I have not had much success with them in the past - the carrot fly usually wins and they rot at the tops. Must try harder.

The next big job is heavy pruning. The apple and plum trees are getting out of hand, so I'll have to call on my friends to do a bit of lopping. They will be quite heavy as I need to cut them well back and they will take quite a while to recover. I won't be expecting many Bramley apples this year, though I hope it will be OK for 2015. There is also a small pine tree which is leaning on the barn wall which will need removing - it's all go, this gardening game.

Your greenhouses will be getting busy (or should be!) The most important thing is ventilation. Make sure you have it under control, and also ensure you water just enough to encourage growth - don't overwater as this will cause "damping off" on seedlings. A spray of cheshunt compound will help to offset this: spray the soil lightly when you have sown the seeds.

I hope you enjoyed your New Year celebrations and made your resolutions, and are determined to keep them, especially about taking part in the Totley Show in September. The committee is already working to make it an interesting and enjoyable event - all it needs is for people (that means you!) to take part by showing off their expertise in the various categories, so get that knitting, photography, artwork, craftwork, woodwork, etc. underway and get it finished in time; and also plan your veg garden so that some of your produce is in fine fettle for the show bench. I always look forward to seeing your efforts! By the way - we were very short of flower arrangements last year so perhaps you could have a try at this! As I have said before, have a good gardening year and enjoy it! It's got to be good for you despite bad backs....

### FEBRUARY

The garden looks a bit of a mess at this time. The leaves seem to be more prolific this year and the rain didn't help when trying to clear them up. The net over the pond has not worked well, so it means another messy job cleaning it out later. I hope your Christmas presents were sensible ones, like spades and forks and wheelbarrows! I had a garden blower vac, which is quite powerful - I have to turn it fairly low when doing the lawn or it tends to pull out the grass! I haven't quite got the hang of it yet. The vegetable patch is looking quite sad. Just a few leeks and cabbage left. I must get it turned over if we have a mild spell so that old Jack Frost can get to all the nasties. There is not a lot to be done apart from tidying up, repairing patios and paths and giving any wood a coat of preserver on any nice sunny days that we may get. It's a good time to plan, and get your seeds and plants ordered, so that you are not panicking later. Don't forget to include those things you are going to grow for the Totley Show!

#### Flowers

Winter flowering jasmine should be pruned as soon as it has finished flowering. As blooms fade, trim back winter flowering heathers with shears to prevent them getting straggly. Don't forget to look at dahlia tubers in store and dust any mould with flowers of sulphur, don't let the frost nip them - protect them well. Give herbaceous plants a feed of rotted manure or compost, lightly forked in, or a dressing of good general fertilizer. Fill any gaps in your wallflowers now, before they start into active growth. Make sure all plants are firmed in, as some may have been loosened by frost.

Give any roses which have suffered with black spot a spraying with fungicide to help prevent a further occurrence, and clear away any leaves. Clean up rockeries, and top dress with compost and chippings.

#### Vegetables

Check vegetable plots for lime content, and if needed add lime at least 2 weeks before sowing or planting. Work in a dressing of Growmore or similar. Onions need a very

rich soil to get the really good ones for the show. Before sowing carrots, rake soil pesticide into the ground. Put seed potatoes in a light airy frost-free place to sprout. Watch out for slugs and deal with them quickly. Top dress spring cabbage and sprouting broccoli with nitro chalk. Plant out autumn sown onions. Dig trenches for runner beans and celery. Sow herbs (chervil, chives, dill and parsley) in slight warmth. Sow leeks to be ready for the Show, planting the best seeds in individual pots in warmth to start them off well, and moving them to cooler positions later, prior to planting out when the frosts are past, or under cloches. Cauliflower and broccoli benefit from a long growing season. Plant seeds now in deep trays in a cold frost free greenhouse. You will have strong healthy plants in good time for spring planting....

#### Trees, Fruit and Shrubs

Prepare the ground for any spring planting. Plant out deciduous shrubs and heathers later in the month. Prune late summer flowering clematis. Cut back hard shrubs like callicarpa trumpet creeper, spirea and tamarisk. Fruit trees growing in grass will need a feed of sulphate of ammonia or nitro chalk to make up nitrogen deficiency - use about half an ounce (30 grams) to a square yard (sq m).

Prune autumn fruiting raspberries, prune goose-berries, and firm in any cuttings of black, red and white currants and gooseberry. This is the perfect month for tree planting. Care now will pay off with rapid sustained growth for the future, so choose the right tree for the site, noting its eventual size. This will avoid drastic pruning later. Bear in mind that pretty blossoms will look lovely for a week or so but how will the tree look in summer and winter? Is it colourful in autumn? Select only the best specimens with even open growth and a good root structure with no obvious defects such as a faulty graft or damage on the trunk - and don't be seduced by size. A small light standard tree will grow just as well as a large heavy tree, will need less staking and will most likely be less expensive. Small mature trees called ships will be even less expensive but of course will take longer to mature. Make the planting hole big enough to spread the roots evenly and make sure they never dry



out during the planting process. A little slow release fertiliser blended with well-rotted compost will improve the soil onto the roots. Use your heel to tread it in. Water often in the first season while the tree is becoming established and mulch with bark or compost.

### **Greenhouse and Indoor Plants**

Gradually increase watering, and keep African violets, cyclamen and indoor primulas humid by standing them on moist pebble-filled saucers. Plant indoor gladioli corms. Pot up January-sown seedlings of geraniums, fuschias, etc. Plant rooted cuttings of late chrysanthemums and carnations. For a nice summer display sow seeds of plants with bush violet, busy lizzie, carnation, gloxinia and schizanthus, (poor man's orchid). Sow primrose for winter flowers. Cut back last year's shoots of fushchia, passion flower and plumbago. Plants, particularly seedlings, like fresh air but not cold air, so on warm days ventilate freely, especially cold frames but keep a weather eye open for frost forecasts. Pollinate and train early vines, and later in the month sow half hard annuals and green-house plants. Start into growth resting plants such as clivias, bird of paradise etc. Freesias which finished flowering some weeks ago can now be laid on their sides in their pots to dry off. Lobeli cardinalis is becoming popular - it can be potted now. Pull away single shoots with a little root attached and pot each separately in a 3½" pots.

### **Lawns**

Rake, spike and top dress with sand, and **keep off**, especially when frosty.

## **MARCH**

### **Flowers**

Prepare ground for planting and seedbeds, and if possible cover seedbeds with cloches to warm them up. Harden off plants which have been over-wintering in frames or indoors, including seedling herbaceous perennials and rock plants. Work into the soil well-rotted manure or compost, or a balanced fertiliser such as Growmore, or both would give the ground and plants a treat. Keep weeds down! Water newly planted perennials during dry spells. Deadhead flowers as they fade. Keep checking for slug damage, especially around young plants, and lay slug bait or beer traps as necessary. Plant lily bulbs. Plant gladioli corms in trays: start them off in slight warmth for planting out in April. Lift and split up over-crowded snowdrops. Sow hardy annuals like larkspur, clarkia and love-in-a-mist either in the garden or under cloches or indoors to plant out later, take cuttings of early flowering chrysanthemums and dahlias and root them in warmth. Lift and divide overcrowded herbaceous perennials such as Michaelmas daisy, golden rod etc. Sow sweet peas one inch deep (25cm) 2-3 inches apart. Plant out indoor bulbs which have finished flowering - they will give a show next spring. Remove shoots that have no live buds from summer flowering clematis and cut back late flowering varieties hard.

### **Vegetables**

Dig up vacant plots and test soil for Ph (adding lime if necessary). Sow cauliflower broccoli and other brassicas in a frame. Brussels sprouts need a long steady season of growth. Sow now in boxes and germinate in a heated frame or greenhouse. If you want cabbages in midsummer (butterflies love them) sow an early variety now in same conditions as sprouts. Sow spinach in a sheltered spot, they love a bit of sunshine. Sow broad beans in boxes for planting out later. At the end of the month sow culinary peas outdoors, scoop out a trench the width of a spade, about 9ins (23cm), not more than 3ins (75cm) deep, place the seeds singly in two lines one at each side about 3 ins (75cm) between seeds, cover

with an inch of soil - the depression left will provide the tiny seedlings with a bit of protection, and putting a few in every two weeks will give a nice succession. Plant early potatoes, have cloches or plastic ready in case of late frosts. Sow spinach beet, a very useful form of beetroot grown for its leaves, which are used like those of spinach. Sow turnips or swedes, which need rich but not newly-manured ground. Plant onion sets, use a trowel to set them rather than a dibber: they are less likely to push themselves out of the ground as the roots develop.

### **Trees, Fruit & Shrubs**

Prepare ground for new shrubs or trees. Plenty of organic compost and well-rotted manure will give them a good start. A dressing of sterilised bone meal will give them a real treat and pay dividends by way of healthy plants and trees. Firm in newly planted shrubs and those loosened by frost. Feed established plants with a balanced fertiliser. Apply mulch especially round new additions. Watch out for aphids and caterpillars, and spray as soon as they are seen. Prune autumn flowering shrubs which flower on the tips of new growth i.e. butterfly bush, blue spirea and hardy fuchsias. Prune hybrid teas and floribunda roses. Cut out any dead or diseased shoots or branches from all trees and shrubs around the garden. Feed cane fruits with balanced fertiliser, and feed black currants with nitro-chalk. Firm in newly planted fruits, mulch and keep well watered.

### **Greenhouse & Indoor Plants**

Busy time for the greenhouse owners with seedlings and young plants to watch over, and all the dormant plants coming into bud. Watch carefully the ventilation and humidity, young seedlings need plenty of light and air if they are to develop into strong sturdy plants. To avoid, the deadly damping off fungus, spray as the plants show through the potting compost with cheshunt compound. Take cuttings as soon as they are large enough and place in propagator, geranium, fuschias etc. will give you added stock for hanging baskets and tubs next year. Plant some schizanthus (poor man's orchid) seeds, they germinate readily and give a lovely colourful show in the early summer months. You need to keep a steady temperature of around 65 - 70F for all seed and cuttings until they are established. Re-pot foliage plants and ferns, use a pot one size larger or on some varieties reduce the root ball size, try not to damage the roots as you do this, do not remove all the soil, just enough to get a reasonable amount of new compost into the new pot. Syringe or spray every morning for at least a week and shade from direct sunlight. Pot up tomato plants. Sow seeds of outdoor tomatoes, they should be ready to plant outside in June. Pot up begonia and gloxinia, which were started in February. Take leaf cuttings of African violets and Cape primrose. Houseplants like maidenhair fern, button fern, and spider plant can be divided and re-potted. Sweet peas which have been raised in the greenhouse should be hardened off. Hydrangeas growing in pots should be fed from now on with a weak mixture of liquid manure every 10 days or so, water the ordinary way in between times.

**Lawns** Start a regular cycle of cutting. If you didn't give an autumn feed to your lawn, give a spring one now. Spike, scarify and top dress with old compost with a little balanced fertiliser or lawn food mixed in. You will soon have a green sward. Check over your mower; oil all moving parts ready for the hard work ahead. Don't forget to trim the edges to give the finishing touch and be the envy of your friends.

**ALL THE BEST FOR 2014....Regards, TOM**

## Walking the Dog .....

Jack and I were out walking on the darkest morning of the year, under the usual skyful of jackdaws, and at the top of Main Avenue there was this sudden smell of warm ham coming from Tinsdeal's shop.

I explained to Jack that there always used to be that smell there when Mr Tinsdeal with the funny name used to be the best grocer in Totley.

Then of course I had to explain to Jack what grocers used to be.

And why Tins-deal was a funny name for one.

And why Need-hams should have been the grocers really, instead of being the greengrocers.

And why Top-hams should have too, instead of selling their green 'uns.

But grown-ups often chose funny names in those days.

Fancy calling yourself S Mellor when you're the headmaster of All Saints?

Or Bert Shirt, when you're not.

And what about our J4 teacher, who hated sniggering and silliness and vulgarity and sex and lavatories of any kind, because she was a keen Methodist? And then went and married Mr Pea-cock?

Talking of teachers who got married, Jim Martin phoned, and among a million other Totley things we chuckled about for hours, told me what happened next to Miss Goldsborough, who taught Our Dave in Infant 1, in SMellor days.

Now, Our Dave loved Miss Goldsborough.

I had to love Miss Freeborough, because I was J2, and she took us on nature walks and slapped our legs.

But Miss Goldsborough was the prettiest teacher for ever and ever amen.

And Our Dave really did love her.

He went on really loving her even when she left him and got married.

And even when he got married as well, he married Sue mainly because she looked like Miss.

When Jim rang off, the only thing I wanted to do was phone Our Dave to tell him the news, and what Miss's first name was, and if he remembered what happened when she left Totley to -

And then I remembered..

My come-home-to-Totley-kids spent most of Xmas showing Jack where they used to live and play. And snapping arty photos of him in front of bits and pieces of Totley.

They were specially keen on the notice on the White Line -

SHEEP  
PLEASE  
KEEP DOGS  
ON A  
LEAD

and the one on the way into Gilly Woods -

LAMBS  
PLEASE DRIVE  
SLOWLY

I was more interested in the new notices deep in Akley Wood, where Jack and I often walk in the evenings -

KEEP OUT  
PRIVATE

We've been falling in the ackie and scaring ourselves in and out of the crumbly trees by the Old Hay Brook all the muddy rooty way to the signal box ever since, oh at least Miss Goldsborough's day.  
So who's suddenly decided we can't any more?

And talking of warning notices, Jack wonders if I'm making up the skull and crossbones gas lamp there onceuponatime was, at the far end of the Grove? Put there to stop us falling off into Derbyshire instead of going to school?

\*\*\*\*\*

Jack is our previously-loved new dog.

He's thanks to Nick and Pauline formerly of Laverdene Avenue, and now of Nebraska.

He's part Manchester Terrier, part black-and-tan-and-cuddle like Maisie, and part Collie like Black Bob the Dandy Wonder Dog.

He loves balls and going warra warra in the woods. He is a Blade and - don't tell Nick and Pauline - sleeps upstairs with us, and reads the Guardian.

Totley people were kind when Maisie was killed.

They've been pretty lovely about Jack too.

**Rony Robinson**

## Abbeydale Park Bowling Club

The Club will be holding two OPEN MORNINGS on Saturday 5th and Saturday 12th April between 10 am and 12 noon for anyone who would like to try their hand at CROWN GREEN BOWLING.

Previous experience is not necessary as instruction will be given. The Bowls Club is primarily a social bowling club with informal sessions running each day in the morning, afternoon and evening. Members assemble and groups are made up as people arrive. Friendly Inter-Club Matches are held throughout the season as well as internal competitions for the many trophies bestowed by the club. Social events are held regularly throughout the year including Dinners, Garden Party and a Race Evening, as well as regular Coffee Mornings during the close season.

Members of the Bowling Club are automatically enrolled as members of Abbeydale Sports Club and can enjoy the facilities provided by the Pavilion.

The Bowls Pavilion is situated at the top of the Abbeydale Park Sports Complex where ample car parking is available.

Please feel free to join us on the Green equipped with suitable footwear (flat with no heels) where you will be warmly welcomed. All other equipment can be provided. We have a large selection of bowls which you can choose to borrow.

For more information please contact:  
Doreen or Richard Bertram (Membership Secretary)  
Telephone: 0114 289 1423  
e-mail: richard.bertram@btconnect.com

## Artists Open Their Studios

May 2014 sees the 16th 'Open Up Sheffield'. Each year the number of visitors increases, and we hope you will be tempted to come with your friends and relatives. 'Open Up' is a not-for-profit organisation, promoting and linking artists and crafts-people working in the Sheffield area.

The work is very diverse in style and content - the venues equally so - from very small personal studios to shared larger halls. There will be demonstrations, commissions taken and purchases made if you wish, but above all expect a friendly welcome. This is your chance to meet the artists first hand, compare what they do and find out what drives them.

The 'Open Up' brochure for 2014 will be in your local shops, garden and community centres, libraries and galleries from mid-April onward. This contains profiles and details of the artists and a map to help you link up your studios of special interest across the city.

Open Up takes place over Saturday May 3rd to Monday May 5th, and Saturday May 10th to Sunday May 11th, usually from 11am to 5pm. Some artists choose to only open for some of the times, so check the brochure or website carefully. Entry is free!

The artists vary from year to year but Dore, Totley and Bradway are all represented in this Bank Holiday event.

For more information about all of the participating artists visit [www.openupsheffield.co.uk](http://www.openupsheffield.co.uk)

## Memories of Jo Rundle

The funeral of Josephine Rundle took place at St Swithins, Holmesfield, on Friday 27<sup>th</sup> December 2013. For many years she wrote articles for Totley Independent, until about 3 years ago. Jo was born in Totley on 18<sup>th</sup> November 1915, at the old school house on Totley Hall Lane. The family then moved up Baslow Road, near Lane Head Road: she was then 5 years old and attended Totley All Saints School.

Her father was a member of Cross Scythes bowling club, where she learnt to play bowls, and she was a member of the young conservative club when she was 18 years of age. Jo later attended Abbeydale night school, to learn shorthand and typing. One of her first jobs was at Totley Hall, working as a kitchen maid for the Milners family; and also working part time for photo finishers at Nether Edge - and also a spell in nursing.

On 4<sup>th</sup> November 1933 she was a bridesmaid to May and Laurie Tym at Totley Church. After getting married herself, to Frank Rundle, they lived at Abbeydale Road for a while and their son Arthur was born in October 1937. They later moved to Gleadless, in January 1939, where Jo worked for Seagraves nurseries, as it was then - she took a keen interest in gardening.

In 1947 the family moved to Moorwoods Lane, and then in 1949 they bought a piece of land for about £150 where they set up a nursery business under the name of Francot Dene Nursery. They bought their first vehicle - a Bradford Jowitt van - and later started delivering greengroceries around Dore and Holmesfield. Jo then joined the Constance Spry flower school to learn floristry

Jo's daughter Yvonne was born around 1952, and at a later date they opened a shop on Baslow Road which was a small wooden hut selling sweets and cigarettes and so on, and also traded as Francot Dene floristry. In 1966 she moved to Youlgreave for a short time before moving to Whitley Bay Northumberland .

21 years later she moved back to Totley - to Sunnyvale Road - and then left the area again to go to Boughton, near Newark, before spending her last year or so in a nursing home near Mansfield.

What a fantastic memory Jo had for her age! She published her book of her life story in 2011, entitled 'A Chip Off The Old Block' and published by Bannister Publications Ltd, 118, Saltergate, Chesterfield, S40 1NG.



M. Scriven  
(FRUITERAMA)

## MARTIN SCRIVEN

HIGH CLASS FRUIT  
& VEGETABLES

37, Baslow Road

Tel. 236 7116

Orders Delivered

## Tristan Swain

Garden Services and Maintenance

Established 1984

Unit C4 Sheaf Bank Business Park  
Prospect Road Heeley  
Sheffield S2 3EN  
Tel/Fax: 0114 255 4689  
Mobile: 07831 802 539  
Email: tristan@tristanswain.co.uk



www.tristanswain.co.uk Public Liability Insurance Waste Transfer Licence



## Got a computer?

### Having Problems?

Is it running slow? Stops responding?  
Having problems running the latest games  
or applications? Broadband installation?

### Give me a call!

I'm available for home visits at any time  
including evenings and weekends. I can  
also suggest upgrades to improve perform-  
ance, or even build you a system to your  
specific requirements.

Tim Brown

Building,  
Installation,  
Upgrading and  
Troubleshooting  
Computer  
Systems  
Over 25 years  
professional  
experience

Phone: 0114 2472619 Fax: 0870 7060080  
Mobile: 078 17464703 Email: service@timbrown.plus.com



## Nigel Watson

### Carpenter and Joiner

Fitted kitchens, sliding wardrobe doors with  
bespoke interiors, internal and external doors  
supplied and fitted, new handrail and spindles,  
laminated and wood flooring, locks, architraves,  
skirting board, stud walling, boxing off etc.

For a reliable and quality service  
TEL: 0114 236 4778  
MOBILE: 07971 528149

## Dronfield Landscapes



Gardens cleared and maintained, Lawns mowed,  
Turbing, Tree felling & pruning, Hedges trimmed &  
reduced, Pond maintenance, Fencing etc.

for free quotation call

Chris on: (0114) 2746158 Mobiles: 07976072785 or  
Richard on: 07789497104

8am-6pm mon-fri

HazelBarrow Farm, Norton S8 8BA

## R.M.M BUILDING SERVICES

### 25 YEARS EXPERIENCE

All types of building work carried  
out including- Drop kerbs, block paving  
(drives, paths, etc), extensions, general  
building repairs and maintenance.

Phone Rob on- Mob- 07906108567

Home-2352190

## DRONFIELD LANDSCAPES

### Logs and wood chippings For Sale

#### Ring for details

Chris 0114 274 6158

Mobile 07976 072785

Richard

Mobile 07789 497104

### Solution to 'Puzzle Corner: Buying a Meal'

Ann has £5. Brian has £9; Charlie £18;  
and Dora £7.

Therefore Ann could not pay for her  
meal.

Don Ashford

## BACK LANE, TOTLEY RISE

Two recent articles published in the Totley Independent (issues 361 & 363) highlighted numerous planning and highways issues relating to properties on Totley Rise, one located on Back Lane, at the rear of No 69 Baslow Road, and four rebuilt cottages at the bottom of the shopping precinct, 15-21 Baslow Road.

One issue related to an application from Mrs Wendy Flowers to 'regularise' the use of a garage/storeroom, located at the rear of 69 Baslow Road, by obtaining a 'Lawful Development Certificate', which would allow the building and surrounding land legally to become a fully operational Builders Yard.

Another issue related to the narrowing of Back Lane, following the demolition and rebuilding of four cottages, namely 15-21 Baslow Road, resulting in the permanent curtailment of access for refuse vehicles and emergency services at the lower end of Back Lane.

During the last eighteen months, intense lobbying of Council officials has taken place regarding the many serious irregularities that have occurred during and after the construction of a garage/storeroom and the rebuild of cottages on Back Lane/Baslow Road. Within the last few months, a number of meetings have also taken place with senior officers of Sheffield City Council - J. Mothersole (CEO) C. Heeley (Development Manager, Planning South) and P. Vickers (Team Manager, Highways). Councillors C. Ross and J. Otten also attended these meetings.

On Tuesday, 7th January 2014, a Planning Committee considered Mrs Wendy Flowers' application for a 'Lawful Development Certificate'. Interestingly, a previous report prepared in April 2013 recommended that a certificate should be granted, but this was hastily withdrawn before being submitted to the Planning Committee after it became known that insufficient evidence of 10 years continuous use had been provided by the applicant.

However, a Planning Officers' report submitted at Tuesday's

meeting covered all the complex issues that have been continually raised, and came down very clearly on the side of local residents, so that all twelve Councillors at the Planning Committee meeting (attended by Cllr. Colin Ross & myself) unanimously voted against Mrs Flowers latest application, for the reason that the applicant has failed to establish the test of 'balance of probability' that the garage/storeroom has been continuously used for 10 years.

In other words, Mrs Wendy Flowers and her agent Mr Martin Flowers (both Directors of Metropolitan Homes Ltd) have been unable to produce any evidence in the form of bills, rates information, dated photographs or letters during the past 10 years.

The Director of Development Services or Head of Planning has also been authorised to take all necessary steps, including enforcement action and legal proceedings if necessary, to ensure that any unauthorised use ceases.

For a considerable period of time, local residents and shopkeepers in Totley have also been aware that during the rebuild of no. 15 Baslow Road, Metropolitan Homes Ltd had encroached into Back Lane by approximately 1.1 metres though until recently, Highways have continually refused to accept that any encroachment took place - despite overwhelming evidence to the contrary.

Highways, who are responsible for maintaining Back Lane, have now finally accepted that a narrowing of the lane did take place and are trying to decide on how the lane can be widened. Unfortunately, there is every indication that owner of the building, Mrs Wendy Flowers, will not be asked to demolish and reinstate the gable end wall of no. 15 Baslow Road back to its original position - this, despite the apparent illegal registration with Land Registry in 2002 of a triangular portion of land, which prior to 2001 was part of the 'public highway'. However, the Chief Executive of the Council has indicated that Mrs Flowers will be

asked to pay the full cost of widening Back Lane.

Unfortunately, there are no guarantees that refuse collection services will be reinstated along Back Lane, even if any widening is successful. Totley Rise residents and shopkeepers are therefore urged to contact the Sheffield Council Tax department to see if they are entitled to pay less Council Tax if such services are not reintroduced.

Metropolitan Homes Ltd is also responsible for a proposal for a multi-storey apartment scheme in Dore, which has attracted over 2,500 objections from local residents and which is the subject of a separate article by Dore residents, published in this month's 'Independent'.

Jim Webb

### Update on Road Works from Amey

Amey are now in the final phase of the work in Totley. Street lighting is now complete and the pavements will be finished over the next month. They are inspecting all new works and identifying any remaining issues that require further work.

Amey want to find out what people think about the completed works and will be undertaking a survey to give residents and business owners the opportunity to feed back about different aspects of the works. This will include the opportunity to comment on the information provided about the work, the impact of the work and customer services. Comments and suggestions collected from the survey will help Amey improve future schemes.

If you have any feedback you would like to share please contact Amey via email at [streetsahead@sheffield.gov.uk](mailto:streetsahead@sheffield.gov.uk) or through the council website at [www.sheffield.gov.uk/contactus](http://www.sheffield.gov.uk/contactus)

Thank you again for your co-operation and support during these works.

## Latest on Dore Road Proposals

Martin Flowers of Metropolitan Homes Limited has been unsuccessful in his attempts to bypass the residents of Dore and his request to hold the second appeal (for two three storey apartment blocks) behind closed doors has been turned down by the Planning Inspectorate which has now ordered a hearing where members of the public will be able to attend and put forward their representations. The hearing is due to be held on 11th March 2014. This follows more than 250 letters from local residents to the Planning Inspectorate requesting a public hearing as opposed to the written representations procedure that was requested by the developer in October 2013. Around 90 local residents as well as local interest groups, Councillors and the Sheffield Star attended the first hearing that was held in Totley in late 2012. Readers will recall that the Inspectorate dismissed the appellant's first appeal as the scheme was significantly at odds with both local and national planning policy. The Planning Inspectorate has also extended the deadline for the submission of representations from 13 December 2013 to 31 January 2014.

A significant number of representations have already been submitted to the Inspectorate citing a lack of community consultation by the developer, failure to address the concerns of the previous Inspector in relation to scale, massing and density (on the basis that the scheme is fundamentally unchanged from the previously appealed scheme), the addition of incongruous glass towers to the built form, underground car parking in a rural location, significant road safety issues, loss of amenity, flooding and lack of sustainability based on the significant pressure that already exists on local services and infrastructure such as schools, medical and dental services as well as parking and drainage.

One feature of a number of the representations already submitted is that they claim that the appellant's formal appeal statement contains a significant number of inaccurate and misleading statements in relation to the alleged height of surrounding properties, scale, bulk and massing of the proposed scheme as well as in relation to the character and nature of the area. In this latter regard the appellant has used a number of property comparatives in an attempt to support its case for development although these properties are clearly not representative of the nature and character of the surrounding area and do not include any of the surrounding properties which are around 5m lower in height than the proposed apartments and whose individual footprints are on average less than one - sixth of the footprint of the proposed apartment scheme. The apartment scheme has a density of 32 units per hectare which is some 355% greater than the average for Dore Road which has a density of just 9 units per hectare and if permitted would represent an extraordinary departure from planning policy.

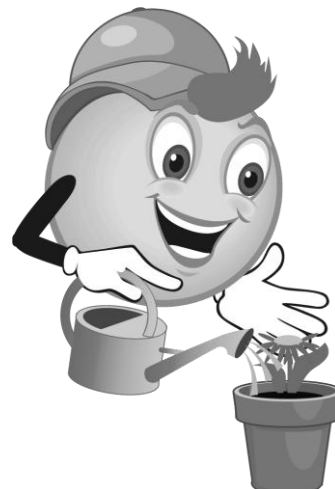
Local residents have been quick to identify the appellant's attempt to portray a rather different character than that which actually exists around the site and no doubt residents will want the Inspector to scrutinise the integrity of the appellant's submission as well as its reasons for omitting key dimensions and footprint and height comparisons in relation to the surrounding properties.

The hearing is currently scheduled to take place at the Council's offices but residents are confident that the Council can be persuaded to hold the event at a local venue given the overwhelming public interest in this application for multi-storey apartments.

*Aubrey Read and Paul Millington*

## SAVE ON YOUR GARDENING SUPPLIES

The garden centres are extremely expensive nowadays, but if you want to save some money, the Dronfield Horticultural Society runs a shop for members. It is extremely well stocked with all the basics for gardeners - composts, grit, tools, seeds, onion and shallot sets, seed potatoes, pots, watering cans, trays, fertilisers, barrels, canes, string, and all accessories. Because all the members are voluntary, and they buy direct from suppliers, costs are very low, and the prices are extremely good compared with the garden centres. e.g. all seeds are Kings, which is a good company, and cost £1 per packet.



Membership is £2 per year (£1 for seniors), open to everyone, no matter where they live. The trading hut is on Snape Hill Crescent, off Thirlmere Drive, which is off Snape Hill Lane, Dronfield S18 2GR in a little cul-de-sac with garages behind some flats. It is only open from 10.30-11.30 on Sundays, and then from April to June is also open Tuesday 7-8pm and Saturdays 2-3pm.

The limited opening hours are well offset by the savings you will make if you get your gardening supplies there, and you are supporting a community organisation. Furthermore, they are always happy to dispense advice and guidance on gardening problems!

*Jennie Street*



## Baby & Toddler Creative Play Programme Launched in Sheffield

A new programme of creative classes, to support parents and carers with babies and toddlers, has been launched in Sheffield. New hands-on creative workshops have been developed by the Creation Station to enable parents to share, develop and discover with their child. The programme called 'Colourful Creations' has been developed in line with the Early Years Foundation Stage to nurture parenting skills and develop essential bonds. The fun and practical classes provide a range of art and craft activities with ideas and tips to continue the play ideas at home.

The weekly classes are based on nurturing a child's own natural curiosity to develop a love of learning through shared hands-on creative fun. The 'Baby Discover' classes have been developed for babies aged 5 months to 18 months and the 'Little Explorer' classes and for toddlers aged 18 months to 4 years of age. Our exciting programme is all about discovering and exploring the colours that are around us, starting with the primary colours and slowly adding more skills and knowledge so that the full range of colours can be experienced, from gold and silver to rainbows and tartan.



Jenny, Creation Station manager said, "Everyone thinks January is a drab month, but not at the Creation Station. We bring sunshine to your lives by exploring yellow and other primary colours. I'm really excited about Colourful Creations launching and helping to develop children in our local area through a wonderful range of activities whilst at the same time supporting parents and carers in helping them to learn new skills to play with their child, and also having fun and to making new friends too. The launch of this programme is extra exciting for me personally, as I am returning from maternity leave to run some of the sessions."

Jenny will lead the weekly, term-time sessions in Weston Park Museum on Monday mornings and Crookes on Tuesday, and fine art and art therapy



graduate Claire will be the session leader in Ecclesall (Monday afternoon), Crookes (Tuesday morning) and Dore & Totley on Fridays.

For further information and to take advantage of our buy-one-get-one-free offer contact Jenny on 07815 092744 or visit [www.thecreationstation.co.uk](http://www.thecreationstation.co.uk).

## Friends of Gillfield Wood events

### FEBRUARY

**TUESDAY FEBRUARY 11 - 7.30pm** in Totley Library: An Illustrated Talk by Val Clinging of Sorby Natural History Society on Mammals of the Sheffield Area. Val will be talking about how local populations of mammals have changed over the years.

Refreshments available. Admission: members free. Non-members £3.

**SUNDAY FEBRUARY 23 - Meet 10am** at the bus terminus on Baslow Road. Practical Conservation Morning with the Council Rangers. Refreshments, tools etc. provided. Please wear strong footwear and appropriate clothing. All levels of help required, and guidance given. Stay as little or long as you wish.

### MARCH

**SUNDAY MARCH 16 - Meet** at the Scout Hut, Aldam Road, Totley, 10.30am. A Walk in Gillfield Wood with Sally Goldsmith.

**SUNDAY MARCH 30 - Meet 10am** at the bus terminus on Baslow Road. Practical Conservation Morning with the Council Rangers. Refreshments, tools etc. provided. Please wear strong footwear and appropriate clothing. All levels of help required, and guidance given. Stay as little or long as you wish.

## ALL SAINTS CHURCH

### SERVICES:

#### FEBRUARY

- 2<sup>nd</sup> 10.00am All ages All Together  
6.30pm Holy Communion  
9<sup>th</sup> 10.00am Holy Communion  
6.30pm Evening Prayer  
16<sup>th</sup> 10.00am Morning Praise  
6.30pm Holy Communion  
23<sup>rd</sup> 10.00am Holy Communion  
6.30pm Evening Prayer

#### MARCH

- 2<sup>ND</sup> 10.00am All Ages All Together  
6.30pm Holy Communion  
9<sup>th</sup> 10.00am Holy Communion  
6.30pm Evening Prayer  
16<sup>th</sup> 10.00am Morning Praise  
6.30pm Holy Communion  
23<sup>rd</sup> 10.00am Holy Communion  
6.30pm Evening Praise  
30<sup>th</sup> 10.00am MOTHERING SUNDAY  
Holy Communion  
6.30pm Holy Communion

There is a Holy Communion Service every Wednesday at 10.00am

### OUR GOD

Our God can't be put in a box  
Nor be contained by a hedge  
There's no way to bottle him up  
Or sit Him right there on a ledge.

Our God can't be shut in a room  
And kept under lock and key  
Nor can you put him in reins  
To hold him just where you can see.

Our God's so strong and Almighty  
His power goes way beyond earth  
Nor can the universe hold Him  
The Creator who gave it its birth.

Yet glorious and holy that God is  
He cares for you and for me  
Though small we must be in creation  
His concern for us always we see

Our God is love that is endless  
He's faithful and just in His ways  
His presence is here beside us  
He'll accompany us to the end of our days.

So loving and watching o'er us  
As throughout our life we now roam  
He's preparing a place for us  
Someday he will welcome us home.

## Totley Hall Lane

### Valentine's Day Biscuits

#### Ingredients:

- 100g icing sugar, plus extra for dusting
- 200g plain flour, plus extra for dusting
- 50g corn flour
- 50g ground almonds
- 250g pack cold butter, cut into cubes
- 50g glacé cherries, finely chopped
- ½ tsp almond extract
- 8 tbsp cherry jam, sieved

#### Method:

1. Heat oven to 180C/160C fan/gas 4. Sift the icing sugar, flour and cornflour together into a bowl. Stir in the ground almonds and butter, then rub in the butter until smooth. Stir in the chopped glacé cherries and almond extract, and bring together to form a dough.
2. Roll out on a lightly floured surface, then stamp out biscuits using a heartshaped cutter. Keep re-rolling the trimmings until all the dough is used. Carefully transfer the biscuits to baking trays lined with parchment and bake for just 8-10 mins until just pale golden.
3. Using an upturned bottle top or similar, press gently into the centre of each biscuit to make a round indent. Spoon in a little jam and return to the oven for 2 mins. Remove and cool on a wire rack, before dusting with icing sugar to serve.



## Hannah Wild: First Totley Schoolmistress



Hannah Wild was the first Schoolmistress of Totley School when it opened, perhaps in temporary accommodation even before the D'Ewes Coke funded school was built on Totley Hall Lane in 1827.

We are grateful to the DVS Archives & Heritage Collection for this picture and for the story behind the portrait's recent history. It would appear that the portrait was in the possession of Rev. William Gibson, the rector of Dore Parish, who wrote a history of that village published in 1927.

When he retired, the portrait and the chair on which Hannah is sitting went with him to his new home. They were eventually inherited by his granddaughter Joy Kernow who lives in Gloucestershire. Since she is over 90 years of age and has no children, Joy felt that these artifacts should return to their original home. Dore Village Society has funded the restoration and reframing of the portrait which will be kept in the Old School.

Hannah Wild appears in the 1841 Census records for Totley Schools and is shown as age 65 (meaning 65-69) having been born within the county of Derbyshire. She is living with Jane Wild a schoolmistress aged 40 (meaning 40-44), also a Derbyshire born woman and young Jane Wild, aged 8, born outside the county. Joan Stratford suggests that Hannah may have been widowed and that she was living with her daughter and granddaughter but there is no proof for this.

Hannah Wild died on 25 January 1851, aged 77.

*Totley History Group*

# Totley Scouts

We are now well into our New Year's programme of events for the children and have as usual a range of activities, both indoor and outdoor. We are even already planning this year's camping expeditions.

Congratulations to two of our Explorer Scouts – Peter Rose and George Eaton – who have gained their Platinum Chief Scouts Award. This award includes many activities, taking positions of responsibility, completing the Bronze Duke of Edinburgh award, and most of all – Community Service. Well done to you both!

Unfortunately our Scout Leader, Andrew Casson, left us at Christmas after many years' service to Totley Scouts. This is due to work and study commitments. We are still running Scouts, but those running Scouts also help with the other sections and could do with help themselves.

Please take a look at our job advert if you are also interested in helping any of our sections – not just Scouts – as any help means a lighter load for all involved. You don't even have to commit to being available every week.

We have meetings 4 nights a week.

**Beaver Scouts** (for 6-8 years olds) on Tuesdays from 6:30pm until 7:45pm.

**Cubs Scouts** (for 8-10 ½ year olds) on Wednesdays from 6:30 until 8pm; or on Thursdays from 6:30 until 8pm.

**Scouts and Explorer Scouts** (for 10 ½ – 16 year olds) on Fridays from 7:30pm until 9:15pm.

If any boy or girl is interested in joining any of the groups please come along to find out more and try a session or two to see if you like it. Of course we do need your parents' permission, so ask one to come along too to find out more. We are next to the woods off Aldam Road.

Richard Frost  
1st Totley Scouts  
TotleyChair@aol.com  
0114 236 3603

## Totley's Weather in 2013!

As usual the weather provided us with a wide mix, but not always where we expected it – thinking of lingering snow in April – some very cold days in September and finishing up with almost a succession of storms in December. July furnished us with a lovely run of days over 20°C (five of them being 25°C or over) although I remember com-

-menting that there were quite a few when, although it was warm/hot, the sun didn't burn the clouds off until tea-time.

The hottest day in Totley was 26.5°C on 1st August, and Weston Park was 30.3°C on the same day. July was the warmest month when in Totley there were 24 days of 20°C or over and 25 in Weston Park. Records show there were 36 days of 20°C or over in Totley, and 57 in Weston Park, during the year. The coldest night for both Totley and Weston Park was 16th January when both experienced a temperature of -5°C. 67 nights were recorded to be 0°C or less in Totley, with February and March having only four nights above. January had 13 days with 0°C or below.

The longest dry spell occurred in July – 17 days in Totley, but this was broken by a very small amount of rain in Weston Park. The wettest spell was 20 days in December. The wettest day was 27th July for both Totley (48.8 mm) and Weston Park (38.3mm). Totley was wet for 193 days with an annual rainfall of 884.5mm; Weston Park had 49 days and 747mm. May recorded 35.8 mm on Totley and 26.4 in Weston Park, and October Totley had 34mm and Weston Park 30.7 mm rainfall in a day.

49 days of lying snow were recorded in Totley while Weston Park recorded 22. 17 days in succession saw lying snow in March through to April, 10 days of which were in April.

Weston Park recorded 1415 hours of sunshine, against their average of 1380 hours. And three thunderstorms were recorded in Totley.

## 1st Totley Scout Group Vacancies

### Assistant Beaver leader, Assistant Cub leader and Assistant Scout leader

Two hours a week  
Can also job share

No experience necessary as full training given

You need lots of enthusiasm and a willingness to have fun

No pay, but a very rewarding experience helping boys and girls to develop practical skills

Do you want to find out more or even have a trial run one evening?

Call John Smith, our Group Scout Leader  
07507 560287

## TOTLEY & DISTRICT DIARY

<b>MONDAYS</b>	<b>COFFEE MORNING</b> , All Saints' Church Hall, 10am-noon <b>TAI-CHI</b> , United Reformed Church, Totley Brook Road, 11.30am-12.30pm <b>RAINBOWS and GUIDES</b> , All Saints' Church Hall, 5.45pm-9pm <b>SLIMMING WORLD</b> , United Reformed Church Hall, 7pm, Jo Elsey: 262 0523 or 07590 545253
<b>TUESDAYS</b>	<b>PILATES</b> , The Old School, Dore, 9.15-10.15am. Phone Teresa Tinklin 07906 312372 <b>COFFEE MORNING</b> , Totley Rise Methodist Church Hall, 10am-noon <b>SHEAF CITIZENS ADVICE BUREAU</b> . Drop in, free, impartial, and confidential. TR Methodist Church, 10am-noon <b>CRAFT GROUP</b> , Totley Library, 2pm
<b>WEDNESDAYS</b>	<b>PILATES CLASSES</b> , Dore Old School, 9.00-10.00 and 10.15-11.15. Contact Caroline - Tel: 0781 722 0324, email caroline1north@btinternet.com, www.pilatescarolinenorth.co.uk <b>COFFEE in the LIBRARY</b> , 10am-11.30am <b>TODDLER GROUP</b> , 10am-11.30am, All Saints' Church Hall. Details tel. Andy Holmes 0114 236 2088 <b>HEALTH WALKS</b> , 10.30am, Totley Library foyer. Phone Tina, The Health Walk Ranger: 0114 203 9335 <b>MODERN SEQUENCE DANCING</b> , All Saints Church Hall, 8pm-10pm
<b>THURSDAYS</b>	<b>BELROBICS</b> , United Reformed Church, 9.15-10am, email: jenny@belrobics.co.uk or telephone: 07816 850132. <b>NCT COFFEE GROUP FOR DORE TOTLEY &amp; BRADWAY</b> , 10am-noon, For mums & babies/toddlers, meeting in various locations, Phone Lucy Street 07837 000405 or email: lucy@streetr.plus.com for further details <b>ROCKCHOIR</b> , United Reformed Church, Totley Brook Rd, 11.30 - 1.00pm. See www.rockchoir.com or call 01252 714276 <b>CHAIROBICS</b> , Heatherfield Club, 1.15pm <b>PUSHCHAIR CLUB</b> , Totley Rise Methodist Church Hall. 1.30pm-3pm. Tel. 236 3157 for further details <b>PILATES CLASS</b> , United Reformed Church, Totley Brook Road, 6.15pm-7.30pm <b>also new class 1.30pm to 2.30pm</b> , Phone Emer Coffey 07792 422909
<b>FRIDAYS</b>	<b>PILATES</b> , The Old School, Dore, 9.15-10.15am, 10.30-11.30am. Phone Teresa Tinklin 07906 312372
<b>SATURDAYS</b>	<b>MODERN SEQUENCE DANCING</b> , All Saints Church Hall 1st Saturday Monthly 8pm-10pm

## FEBRUARY

**SUN 2nd CASTLETON FARMERS MARKET**, the Village Hall, 10am-3pm  
**TUES 11th FRIENDS OF GILLFIELD WOOD**, An illustrated talk by Val Clinging of Sorby Natural History Society on "Mammals of the Sheffield Area". Val will be talking about how local populations of mammals have changed over the years. Refreshments available. Admission free to members. Non-members £3. 7.30 pm, Totley Library  
**TUES 18th TOTLEY TOWNSWOMEN'S GUILD**, 'Nelson's Women' with Alan York. Totley Rise Methodist Church Hall, 10 am.  
**WED 19th TOTLEY HISTORY GROUP** Open meeting. A chance to share and discuss recent research. All welcome. Totley Library, 7.30 pm  
**SUN 23rd FRIENDS OF GILLFIELD WOOD** Practical Conservation Morning with the Council Rangers. Meet 10am at the bus terminus on Baslow Road. Refreshments, tools etc. provided. Please wear strong footwear and appropriate clothing. Check the website [www.friendsofgillfieldwood.com](http://www.friendsofgillfieldwood.com) for further details  
**THU 27th SHEFFIELD FARMERS MARKET**, 8.30am-5pm, Fargate

## MARCH

**FRI 7th WOMEN'S WORLD DAY OF PRAYER**, Dore Methodist Church, 10.30 am. Speaker Dr Jenny Bywaters. Theme: 'Streams in the Desert' prepared by the Women of Egypt. Refreshments will be served.  
**SUN 9th MINIATURE TRAIN RIDES** Abbeydale Road South, 1 pm - 5 pm (weather permitting) Car park closes 5.15pm. £1 per ride per person. See [www.sheffieldsmee.co.uk](http://www.sheffieldsmee.co.uk)  
**SUN 16th FRIENDS OF GILLFIELD WOOD**. A Walk in Gillfield Wood with Sally Goldsmith - meet at the Scout Hut, Aldam Road, Totley, 10.30am.  
**TUES 18th TOTLEY TOWNSWOMEN'S GUILD**, Annual General Meeting. Totley Rise Methodist Church Hall, 10 am.  
**SUN 23rd MINIATURE TRAIN RIDES** - Abbeydale Road South, 1 pm - 5 pm (weather permitting) Car park closes 5.15pm. £1 per ride per person. See [www.sheffieldsmee.co.uk](http://www.sheffieldsmee.co.uk)  
**MON 24th TRANSPORT 17** - Annual General Meeting. Cross Scythes, 7.00 pm.  
**WED 26th TOTLEY HISTORY GROUP**: 'J. G. Graves : businessman and benefactor: the life of a Sheffield entrepreneur and the city's greatest philanthropist', by Mike Spick. Totley Library, 7.30. For more details see [www.totleyhistorygroup.org.uk](http://www.totleyhistorygroup.org.uk)  
**SUN 30th FRIENDS OF GILLFIELD WOOD** Practical Conservation Morning with the Council Rangers. Meet 10am at the bus terminus on Baslow Road. Refreshments, tools etc. provided. Please wear strong footwear and appropriate clothing. Check the website [www.friendsofgillfieldwood.com](http://www.friendsofgillfieldwood.com) for further details.

Mark and Sally Fletcher invite you to

**The Grouse Inn**

**Longshaw**

Sheffield S11 7TZ

**Meal times:-**

**Mondays 12.00 to 2.30pm**  
**Tuesdays to Friday's 12.00 to 2.30pm and 6-30pm to 9-30 pm**  
**Saturdays 12.00 to 3.00pm and 6.30pm. to 9.00pm (drinks – open all day)**  
**Sundays 12.00 to 9.00pm**  
**Phone 01433 630 423**

**R Rose & Co**

Chartered Accountants & Business Advisors

Specialists at looking after the affairs of small businesses.

For a **FREE** initial consultation please contact Roger Rose FCA on **0114 281 2331**

From business start-ups and general accounting, to support and advice in business development and strategy, we can assist you in our personal one-to-one service. To find out more please call 0114 281 2331.

213 Derbyshire Lane, Norton Lees, Sheffield S8 8SA  
 Email: [info@r-rose.co.uk](mailto:info@r-rose.co.uk)



# News from Old Totley

Newspapers are a great source of local history. Here are a few cuttings that caught my eye from the pile that Totley History Group member, Marlene Marshall uncovered. They have been taken verbatim from the source and none of the spelling has been corrected. These little snippets of news give us a vivid insight into the lives of local people. The crimes, punishments and social structures that were in place to help those unable to support themselves are all here. The welfare system as we know it today was introduced in the early 1950s. Prior to that, the state gave limited assistance to people in need and most help was offered with moral strictures attached. You'll notice also that some of the punishments are quite a bit harsher than our modern legal system can impose!

**Saturday 14th January 1837 Sheffield Independent** (page 3)

*"Justice Room, Eckington. Thursday. - Before Sir George Sitwell, Bart., and B. B. Pegge Burnell Esq. Joseph Cowley was placed before the Bench, and charged by the Overseer of the Poor of Dronfield with having left his wife and child chargeable to that township. It was proved that Cowley was keeping a disorderly house at Chesterfield, and living in debauchery. The Magistrates convicted him as a rogue and vagabond, and sent him to the tread-mill for one month.*

*John Fearnough, of Totley, and William Fearnough, of Sheffield, were summoned to shew cause why there should not be an order made upon them to maintain their mother, who is chargeable to the township of Dore. They were ordered to contribute two shillings weekly towards her support."*

The Overseers of the Poor were local organisations established to administer financial help to local people who were unable to support themselves. This help was funded through a local tax on property owners. As you can see from these cases, the Overseers had the power to investigate and enforce alternative means of support for the needy people who applied to them for help.

**10th April 1841 Sheffield and Rotherham Independent** (page 7)

*"Pound Breach. - Job Green, of Totley, was charged by John Barton, of that place, with a pound breach. It was proved that the defendant's sheep had*



*frequently trespassed on the complainant's turnips, and that he had impounded them. Barton made a demand of 8s. for damage done to his turnips, which Green refused to pay; but on the following night the sheep were by some means liberated from the pound. Green was ordered to pay 8s. for damages and 9s. for costs."*

There is no indication in this report of where this turnip outrage took place, but on the 1840 Tithe map for Totley, John Barton and Job Green have adjacent arable fields on the land between Gillfield wood and Totley village. For the Tithe, John Barton

listed his trade as brick maker and lived on Hillfoot Road just before the turning to Totley Grove. It was not unusual for farmers with only a few fields to have another occupation in addition to farming.

**Saturday 20th November 1841 Sheffield Independent** (page 8)

*"Poor House Libraries. Every effort to soften the rigours of poverty is praiseworthy and for the sake of example ought to be widely published. It gives us pleasure to hear that through the instrumentality of D'Ewes Coke Esq. of Totley Hall a resolution has recently passed by the Board of Guardians of Ecclesall Union that independent of the usual supply of devotional*



*books, popular and instructive periodicals to the value of £2 annually shall be taken for the use of the poor inmates in the house in addition to which Mr. D. Coke himself will contribute liberally and use his influence with others to do the same to provide a permanent library of standard work."*

D'Ewes Coke was the driving force and major financial donor for the first school in Totley. The new owner of the old school house on Totley Hall Lane has recently had the original dedication plaque replaced with a beautifully carved, sandstone replica. The old one, which was crumbling away, has been kept safe and carefully preserved.

If you've had your appetite whetted for more old news from Totley, you'll find more and lots besides on the Totley History Group website at [www.totleyhistorygroup.org.uk](http://www.totleyhistorygroup.org.uk)

## Totley Health Walk Group

In January, Ecclesall Woods celebrated 10 years of walking and now it is the turn of Totley Health Walk Group. This group (with a register of approximately 60 and an average turn-out of 40 people) meets in the library every Wednesday morning. One of the Group members said "Sadly Totley's library is one of several that the Sheffield Council are thinking of closing to save money. The library is more than just a book resource, it is the community centre in Totley - where things happen including of course our health walk. The walk will continue even if the library closes but we will lose a fantastic resource both in terms of support from the staff and prime-site locality so we won't be going down without a fight."

## Paul moves downstairs!

As this issue of the TI goes to press, Paul Reynolds, owner of MandMade electrical shop upstairs at the Heatherfield, is busy preparing to move the shop into a much bigger space downstairs at ground level. The upstairs shop has been open for a year, with around 150 customers



a week, though as Paul remarks, "some of them have found climbing the stairs a bit daunting!" The downstairs space used to be the Heatherfield's bar area (the bar will be relocated in the function room at the back) and the shop entrance will open onto a resurfaced drive at the side of the building. "We will stock DIY materials, sand, cement, timber, paint, hardware and tools - as well as electrical equipment", says Paul, "and there'll be no stairs to climb!"

## Help!

The Knit & Natter group which meets every Tuesday between 12 and 3 pm at Totley Rise Methodist Church is running out of wool for their charity knitting work. If you have any to spare, please drop it off any Tuesday, between 10 am and 3 pm at the Church. Thanks very much!

*Avril Critchley*

## End of the road for the Fleur?

We noted in Issue 364 the closure of the Fleur de Lys pub, and its enclosure in ugly steel security sheets. A few weeks ago the story went a stage further, with the appearance of a sign outside reading "For Sale: Site for Development".

Enterprise Inns told 'Totley Independent' that "the vast majority of enquiries we have received have been to purchase the freehold of the site, with a view to redevelopment. Whilst our preferred option is still to develop the site to a premier flagship pub business, we are now also exploring other opportunities." So it looks like the end of the road for this Totley landmark.

## Holmesfield Church Walking Group

On Wednesday February 26th at 10.a.m. Robin Greetham will lead a walk starting from the Rutland Public House in Holmesfield where we can order our food. We will then drive to the village hall car park. The walk takes us through Holmesfield Park wood then up to Lidgate then down to Horsleygate and back through the fields to the cars. The cost of the walk is £3 and the proceeds will go to Holmesfield Church restoration fund. If you would like to come just turn up on the day. The walk is approximately 4 miles long. If you have any queries, phone Robin on 01246412767.

## The local venue for 18th & 21st Birthday parties.

**Facing the prospect of a birthday party or other family event?**

**Consider Tigers rugby club.**

**Local function room,  
yet out of the way**

**Plenty of space & still economical**

**Ideal for all family celebrations  
where you need a little more room,  
but want to be close by.**

Sheffield Tigers Rugby Club  
Hathersage Road  
Dore.

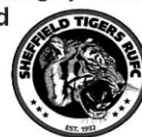
S17 3AB

Tel: 2360075

(answer phone)

bookings@sheffielddtigers.co.uk

www.sheffielddtigers.co.uk/venue-hire



# *The Shepley Spitfire, Totley*

~~~~~  
*Firstly, we hope you all had a very Merry Christmas and a Happy New Year.  
We would like to thank all our customers who shared the magic with us.*



## *Valentine's Day*

~~~~~

*Romance is upon us at this time of year so why not spoil your special someone, book a table with us. You will receive full table service and you can even pre order your champagne ready to be popped on your arrival for that added special touch. Every table will be dressed for the occasion, with the perfect love songs in the background and we will be having a fantastic set menu available!*

## *Mother's Day*

~~~~~



*Every mother needs their day to rest, sit back and enjoy their family so book a table with us and we will do all the running around for her and the rest of the family, of course. We will have everything in hand to make sure she is spoilt on her special day as this happens only once a year.  
Lets make it one she remembers!*

~~~~~

*Take a look at our full menu on the  
website [www.gkflamegrill.co.uk](http://www.gkflamegrill.co.uk) or contact us by  
Telephone 01142360298 or Email [4881@greeneking.co.uk](mailto:4881@greeneking.co.uk)  
and we will gladly send one out to you.*

*Myself and all the team look forward to serving you soon!*

# ACTIV physiotherapy

## Getting your back on track!

- Back & Neck Pain
- Sports Injuries
- Muscle & Joint Problems
- Repetitive Strain Injuries
- Post-operative rehabilitation
- Women's Health Issues
- Acupuncture Available

Chartered, experienced  
Physiotherapists, registered  
with all major  
insurance companies



• email: [mail@activphysiotherapy.co.uk](mailto:mail@activphysiotherapy.co.uk) • web: [www.activphysiotherapy.co.uk](http://www.activphysiotherapy.co.uk) •



Bradway:  
0114 235 2727

Totley:  
0114 235 7845

Hope:  
0143 362 3602

# more rehab

Neurological Physiotherapy & Services

Specialist Adult & Paediatric Neurological  
Physiotherapy, Occupational Therapy &  
Speech Therapy.

- |                                      |                                     |
|--------------------------------------|-------------------------------------|
| ➤ Acquired Brain Injury              | ➤ Hydrotherapy                      |
| ➤ Spinal Cord Injury                 | ➤ Electrical Stimulation            |
| ➤ Parkinsons Disease                 | ➤ Gymnasium Work                    |
| ➤ Stroke                             | ➤ Splinting                         |
| ➤ Epilepsy                           | ➤ Saebo Assessments and Fittings    |
| ➤ Cerebral Palsy                     | ➤ FES Bike Programs                 |
| ➤ Multiple Sclerosis                 | ➤ Cognitive Testing                 |
| ➤ Fatigue Syndromes                  | ➤ Carer Training                    |
| ➤ Balance and Co-ordination Problems | ➤ Equipment, Accommodation and Aids |
| ➤ Amputee Rehabilitation             | ➤ Assessments                       |
| ➤ Many Other Conditions              | ➤ Elderly Rehabilitation            |

Clinic & home visits available - T : 0114 2353 150

E : [info@morerehab.com](mailto:info@morerehab.com) - W : [www.morerehab.com](http://www.morerehab.com)



## GWS



### Technology Solutions

PC Problems/ Repairs/ Servicing      No Job Too Small  
Wireless & Internet Setup      PC Setup/Data Transfer  
New PC's/ Laptops & Upgrades      Safe PC Disposal  
Reconditioned PC's & Laptops available      Tuition  
Software/Hardware supplied & installed  
For All Your PC Needs

**Guy Senior**

Phone: 0114 2352662      Mobile: 07890030453

Email: [guy@gwstech.co.uk](mailto:guy@gwstech.co.uk)

Web: [www.gwstech.co.uk](http://www.gwstech.co.uk)

GWS. 5 Conalan Avenue, Bradway, Sheffield S17 4PG

## design etc.

your local full service  
design agency ...

corporate branding

stationery

brochures

advertising

web design

Call us on 0114 2622130

e [craig@designetcetera.co.uk](mailto:craig@designetcetera.co.uk) w [designetcetera.co.uk](http://designetcetera.co.uk)

or call in at 61 Baslow Road, Totley Rise. S17 4DL

**Editor: Phil Harris**

Tel. 07956 858944 or email:  
[editor@totleyindependent.co.uk](mailto:editor@totleyindependent.co.uk)

**Advertising & Distribution:**

**John Perkinson**

Tel. No: 236 1601 or email:-  
[advertising@totleyindependent.co.uk](mailto:advertising@totleyindependent.co.uk)

**Proof readers: Chris & Margaret Spencer**

Items for publication may be left or sent to:  
**2, Main Avenue, Totley, Sheffield, S17 4FG**

[www.totleyindependent.co.uk](http://www.totleyindependent.co.uk)

**PRINTED by DESIGN ETC, TOTLEY RISE**

## TOTLEY INDEPENDENT FOR April/May

The next issue of the Totley Independent will be available  
from the usual distribution points on

**SATURDAY 5th April**  
**COPY CLOSE DATE for this issue**

**will be**

**SATURDAY 15th March**

Published by Totley Independent CIC. Totley Independent is a registered Community Interest Company, number 07750166. We welcome letters about local affairs and will publish as many as possible. Items will not be considered that are submitted anonymously. The views expressed are not necessarily those of Editor or the editorial staff and must not be attributed to them.  
© Totley Independent 2014